

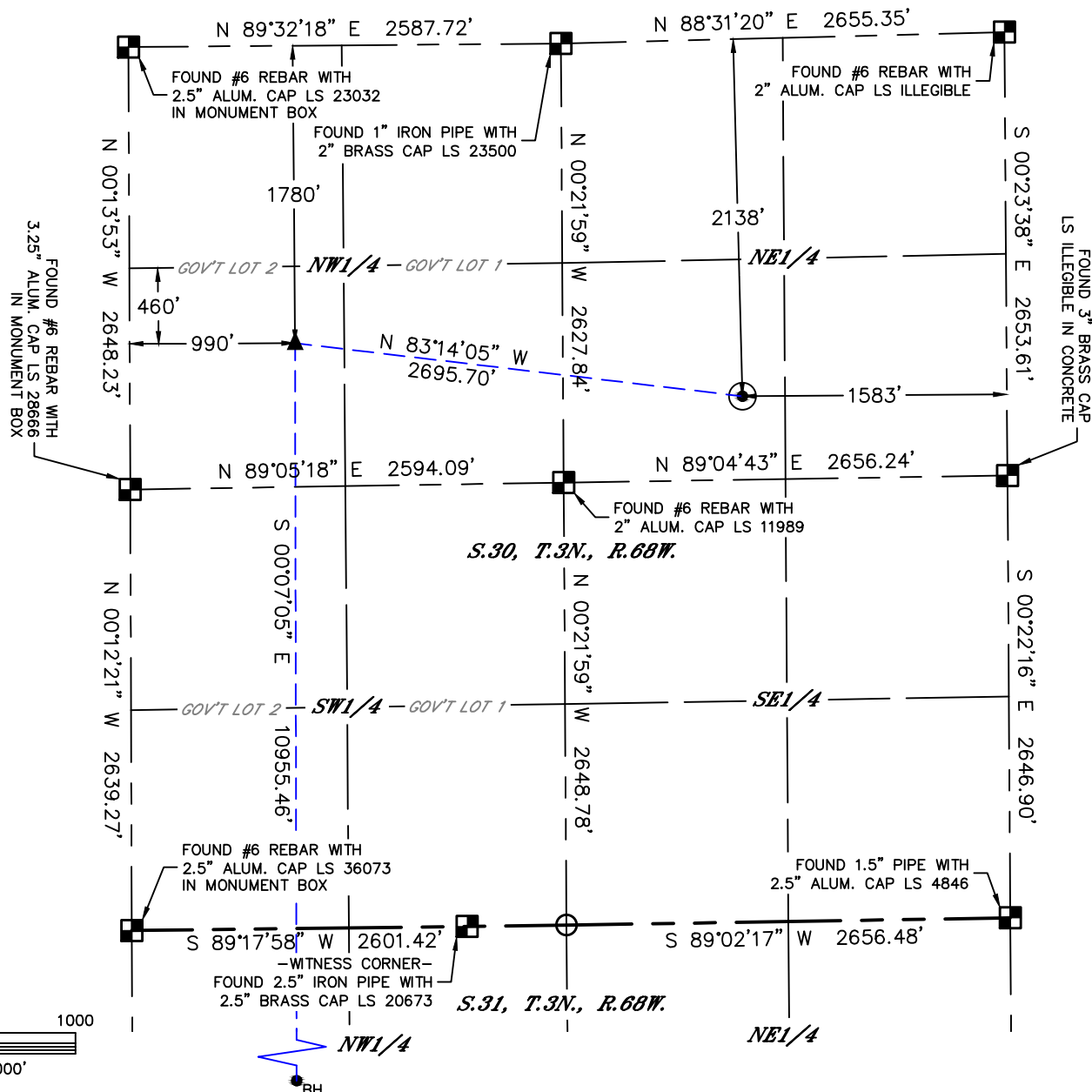


Lat40°, Inc. 6250 W. 10th Street, Unit 2, Greeley, CO 970-515-5294

WELL LOCATION CERTIFICATE

KNIGHT 20

SECTION: 30
TOWNSHIP: 3N
RANGE: 68W
6TH. P.M.
WELD COUNTY, CO



CLIENT: CUB CREEK ENERGY, LLC						LANDMAN: TRACY BUTZEN			
INSTRUMENT OPERATOR: BRIAN ROTTINGHAUS						SURVEY DATE: 10/18/2017		SURFACE USE: PASTURE	
SHL FOOTAGE				SHL LAT °	SHL LONG °	SHL PDOP	SHL ELEV (FT.)	SHL 1/4/1/4	SHL S-T-R
2138	FNL	1583	FEL	40.19788	-105.04206	2.1	4994	SWNE	30-3-68

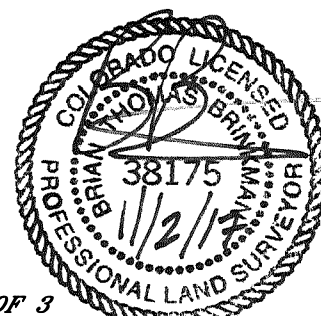
BHL FOOTAGE				BHL LAT °	BHL LONG °	BHL S-T-R	EP LAT °	EP LONG °	EP S-T-R
2150	FNL	990	FWL	40.16872	-105.05175	6-2-68	40.19879	-105.05163	30-3-68

LEGEND

- = ALIQUOT MONUMENT AS DESCRIBED
- = CALCULATED POSITION
- = SURFACE HOLE LOCATION (SHL)
- ▲ = ENTRY POINT LOCATION (EP)
- _{BH} = BOTTOM HOLE LOCATION (BHL)
- ⊕ = EXISTING WELL
- ⊖ = ABANDONED WELL

NOTE:

- 1) Bearings shown are Grid Bearings of the Colorado State Plane Coordinate System, North Zone, North American Datum 1983. The lineal dimensions as contained herein are based upon the "U.S. Survey Foot."
- 2) Distances to section lines measured at 90 degrees from said section lines.
- 3) Ground elevations are based on an observed GPS elevation (NAVD 1988 DATUM).
- 4) Latitude and Longitude shown are (NAD 83 DATUM).
- 5) IMPROVEMENTS: See LOCATION DRAWING for all visible improvements within 500' of oil and gas location.
- 6) This map does not represent a boundary survey.



SHEET 1 OF 3

Brian T. Brinkman—On behalf of Lat40°, Inc.
Colorado Licensed Professional Land Surveyor No. 38175
DATE: 11/7/2017
PROJECT#: 2017091

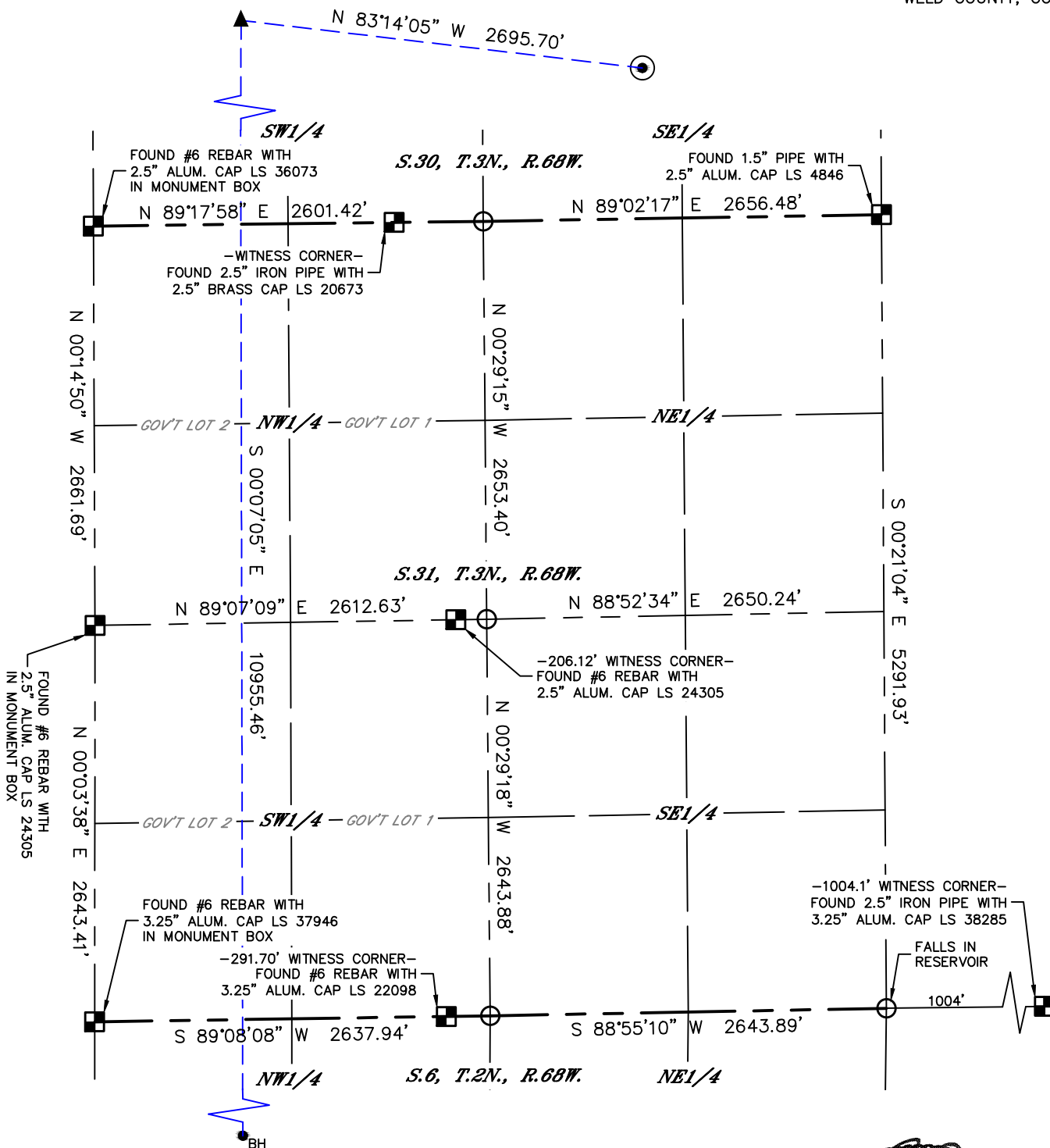


Lat40°, Inc. 6250 W. 10th Street, Unit 2, Greeley, CO 970-515-5294

WELL LOCATION CERTIFICATE

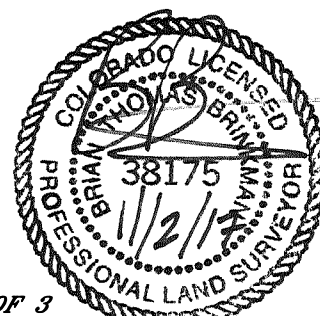
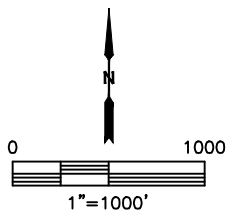
KNIGHT 20

SECTION: 30
TOWNSHIP: 3N
RANGE: 68W
6TH. P.M.
WELD COUNTY, CO



LEGEND

- = ALIQUOT MONUMENT AS DESCRIBED
- = CALCULATED POSITION
- ⊙ = SURFACE HOLE LOCATION (SHL)
- ▲ = ENTRY POINT LOCATION (EP)
- = BOTTOM HOLE LOCATION (BHL)
- ⊕ = EXISTING WELL
- ⊖ = ABANDONED WELL



SHEET 2 OF 3

Brian T. Brinkman—On behalf of Lat40°, Inc.
Colorado Licensed Professional Land Surveyor No. 38175
DATE: 11/7/2017
PROJECT#: 2017091

Brian T. Brinkman—On behalf of Lat40, Inc.
Colorado Licensed Professional Land Surveyor No. 38175 DATE: 11/7/2017 PROJECT#: 2017091