

# Cub Creek Energy, LLC

N  
GRID

**Location** Weld County, CO  
**Field** WATTENBERG  
**Installation** Knight Pad

**Slot** KNIGHT 16  
**Well** W KNIGHT 16  
**Wellbore** W KNIGHT 16 (PWB)

Nov-6-2017  
EMA-2015 (2000.0-2020.0) Dip: 66.59 deg Field: S2154.0 r/T  
Lat: N40 11 52.9440 Long: W105 2 31.0620 Elev: 4993.00 ft  
Magnetic North is 8.54 deg East of True North  
GRID North is 0.30 deg East of True North  
To correct azimuth from True to GRID subtract 0.30 deg  
To correct azimuth from Magnetic to GRID add 8.25 deg

## WELL PROFILE DATA

Point	MD	Inc	Azi	TVD	North	East	deg/100ft	V. Sect
Tie on	17.00	0.00	0.00	17.00	S 0.00	W 0.00		-0.00
KOP	1647.00	0.00	300.68	1647.00	S 0.00	W 0.00	0.00	-0.00
End of Build	2894.14	24.94	300.68	2855.12	N 136.33	W 229.80	2.00	-94.99
End of Hold	6659.26	24.94	300.68	6269.06	N 946.47	W 1595.38	0.00	-659.47
Target Knight 16 EP	7683.94	90.00	179.88	6916.00	N 386.50	W 1852.71	10.00	-63.72
T.D. & Target Kni... BH	18609.30	90.00	179.88	6916.00	S 10538.84	W 1830.64	0.00	10696.66

East (Feet) ->

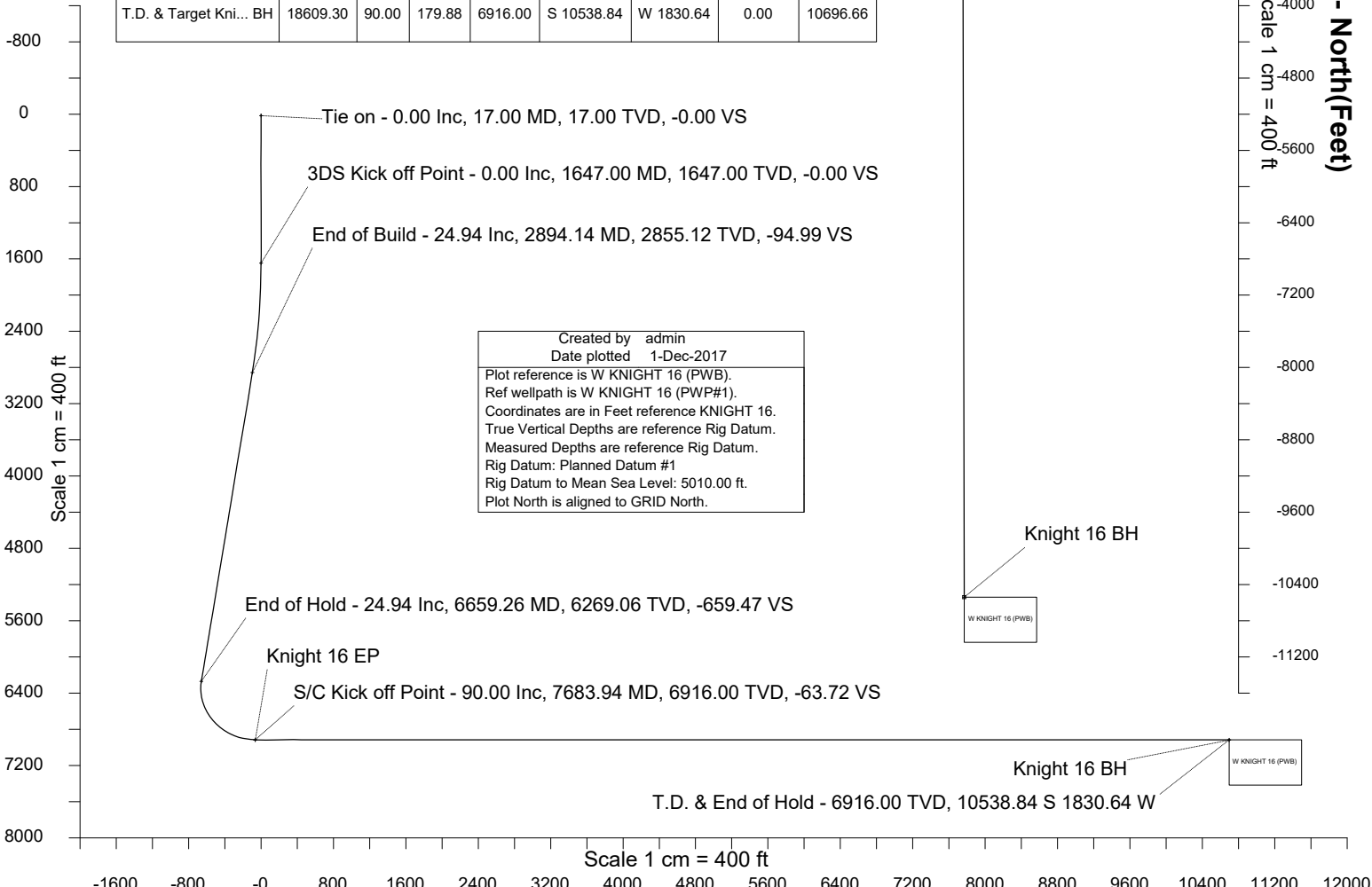
-3200 -2400 -1600 -800 -0 800  
Scale 1 cm = 400 ft

Knight 16 EP

Surface 0.00 N 0.00 E

1600  
800  
0  
-800  
-1600  
-2400  
-3200  
-4000  
-4800  
-5600  
-6400  
-7200  
-8000  
-8800  
-9600  
-10400  
-11200  
Scale 1 cm = 400 ft  
-< North(Feet)

-< True Vertical Depth (Feet)



Created by admin  
Date plotted 1-Dec-2017  
Plot reference is W KNIGHT 16 (PWB).  
Ref wellpath is W KNIGHT 16 (PWP#1).  
Coordinates are in Feet reference KNIGHT 16.  
True Vertical Depths are reference Rig Datum.  
Measured Depths are reference Rig Datum.  
Rig Datum: Planned Datum #1  
Rig Datum to Mean Sea Level: 5010.00 ft.  
Plot North is aligned to GRID North.

Vertical Section (Feet) ->

Azimuth 189.85 with reference 0.00 N, 0.00 E from KNIGHT 16



SYSDRILL  
Well Design Combined Report  
Wellbore: W KNIGHT 16 (PWB)



Wellhead Details							
Name	Latitude	Longitude	Northing	Easting	North	East	Slot Elevation Above Ground
KNIGHT 16	40.19771300	-105.04205500	1315199.6606	3127922.4206	119.25S	23.13W	0.00

Declination		
Date	Source	Time
Nov-6-2017	EMM-2015 [2000.0-2020.0]	14:52

Installation Details						
Name	Installation Position (Latitude)	Installation Position (Longitude)	Northing	Easting	Coord System Name	North Alignment
Knight Pad	40.19804000	-105.04197000	1315318.9022	3127945.5490	CO83-NF on NORTH AMERICAN DATUM 1983 datum	Grid

Summary Wellpath									
MD[ft]	Inc[deg]	Azi[deg]	TVD[ft]	North[ft]	East[ft]	Dogleg [deg/100ft]	Vertical Section[ft]	Northing	Easting
17.00	0.00	0.000	17.00	0.00N	0.00E		0.00	1315199.66	3127922.42
1647.00	0.00	300.680	1647.00	0.00N	0.00E	==>	0.00	1315199.66	3127922.42
2894.14	24.94	300.680	2855.12	136.33N	229.80W	2.00	-94.99	1315335.99	3127692.63
6659.26	24.94	300.680	6269.06	946.47N	1595.38W	==>	-659.47	1316146.08	3126327.12
7683.94	90.00	179.880	6916.00	386.50N	1852.71W	10.00	-63.72	1315586.14	3126069.79
18609.30	90.00	179.880	6916.00	10538.84S	1830.64W	==>	10696.66	1304661.29	3126091.86

Interpolated Wellpath								
MD[ft]	Inc[deg]	Azi[deg]	TVD[ft]	North[ft]	East[ft]	Dogleg [deg/100ft]	Vertical Section[ft]	All Station Comments
0.00	0.00	0.000	0.00	0.00N	0.00E		0.00	Rig Datum
17.00	0.00	0.000	17.00	0.00N	0.00E	==>	0.00	Slot Datum
100.00	0.00	0.000	100.00	0.00N	0.00E	==>	0.00	
200.00	0.00	0.000	200.00	0.00N	0.00E	==>	0.00	
300.00	0.00	0.000	300.00	0.00N	0.00E	==>	0.00	
400.00	0.00	0.000	400.00	0.00N	0.00E	==>	0.00	
500.00	0.00	0.000	500.00	0.00N	0.00E	==>	0.00	
600.00	0.00	0.000	600.00	0.00N	0.00E	==>	0.00	
700.00	0.00	0.000	700.00	0.00N	0.00E	==>	0.00	
800.00	0.00	0.000	800.00	0.00N	0.00E	==>	0.00	
900.00	0.00	0.000	900.00	0.00N	0.00E	==>	0.00	
1000.00	0.00	0.000	1000.00	0.00N	0.00E	==>	0.00	
1100.00	0.00	0.000	1100.00	0.00N	0.00E	==>	0.00	
1200.00	0.00	0.000	1200.00	0.00N	0.00E	==>	0.00	
1300.00	0.00	0.000	1300.00	0.00N	0.00E	==>	0.00	
1400.00	0.00	0.000	1400.00	0.00N	0.00E	==>	0.00	
1500.00	0.00	0.000	1500.00	0.00N	0.00E	==>	0.00	
1600.00	0.00	0.000	1600.00	0.00N	0.00E	==>	0.00	
1700.00	1.06	300.680	1700.00	0.25N	0.42W	2.00	-0.17	
1800.00	3.06	300.680	1799.93	2.08N	3.51W	2.00	-1.45	
1900.00	5.06	300.680	1899.67	5.70N	9.60W	2.00	-3.97	
2000.00	7.06	300.680	1999.11	11.08N	18.68W	2.00	-7.72	
2100.00	9.06	300.680	2098.11	18.24N	30.74W	2.00	-12.71	
2200.00	11.06	300.680	2196.57	27.15N	45.76W	2.00	-18.92	
2300.00	13.06	300.680	2294.36	37.81N	63.73W	2.00	-26.34	
2400.00	15.06	300.680	2391.36	50.20N	84.62W	2.00	-34.98	
2500.00	17.06	300.680	2487.45	64.32N	108.41W	2.00	-44.81	
2600.00	19.06	300.680	2582.52	80.13N	135.07W	2.00	-55.83	
2700.00	21.06	300.680	2676.45	97.63N	164.57W	2.00	-68.03	
2800.00	23.06	300.680	2769.12	116.80N	196.87W	2.00	-81.38	
2900.00	24.94	300.680	2860.43	137.59N	231.93W	==>	-95.87	
3000.00	24.94	300.680	2951.11	159.11N	268.20W	==>	-110.86	
3100.00	24.94	300.680	3041.78	180.63N	304.47W	==>	-125.86	

All data is in Feet unless otherwise stated  
Coordinates are from Slot MD's are from Rig and TVD's are from Rig ( Planned Datum #1 5010.0ft above Mean Sea Level )  
Vertical Section is from 0.00N 0.00E on azimuth 189.850 degrees  
Bottom hole distance is 10696.66 Feet on azimuth 189.85 degrees from Wellhead  
Calculation method uses Minimum Curvature method  
Prepared by Microsoft  
Date Printed: 1-Dec-2017



SYSDRILL  
Well Design Combined Report  
Wellbore: W KNIGHT 16 (PWB)



Interpolated Wellpath								
MD[ft]	Inc[deg]	Azi[deg]	TVD[ft]	North[ft]	East[ft]	Dogleg [deg/100ft]	Vertical Section[ft]	All Station Comments
3200.00	24.94	300.680	3132.45	202.14N	340.74W	==>	-140.85	
3300.00	24.94	300.680	3223.12	223.66N	377.01W	==>	-155.84	
3400.00	24.94	300.680	3313.80	245.18N	413.27W	==>	-170.83	
3500.00	24.94	300.680	3404.47	266.69N	449.54W	==>	-185.82	
3600.00	24.94	300.680	3495.14	288.21N	485.81W	==>	-200.82	
3700.00	24.94	300.680	3585.82	309.73N	522.08W	==>	-215.81	
3800.00	24.94	300.680	3676.49	331.24N	558.35W	==>	-230.80	
3900.00	24.94	300.680	3767.16	352.76N	594.62W	==>	-245.79	
4000.00	24.94	300.680	3857.84	374.28N	630.89W	==>	-260.79	
4100.00	24.94	300.680	3948.51	395.80N	667.16W	==>	-275.78	
4200.00	24.94	300.680	4039.18	417.31N	703.43W	==>	-290.77	
4300.00	24.94	300.680	4129.85	438.83N	739.70W	==>	-305.76	
4400.00	24.94	300.680	4220.53	460.35N	775.97W	==>	-320.75	
4500.00	24.94	300.680	4311.20	481.86N	812.23W	==>	-335.75	
4600.00	24.94	300.680	4401.87	503.38N	848.50W	==>	-350.74	
4700.00	24.94	300.680	4492.55	524.90N	884.77W	==>	-365.73	
4800.00	24.94	300.680	4583.22	546.41N	921.04W	==>	-380.72	
4900.00	24.94	300.680	4673.89	567.93N	957.31W	==>	-395.72	
5000.00	24.94	300.680	4764.56	589.45N	993.58W	==>	-410.71	
5100.00	24.94	300.680	4855.24	610.96N	1029.85W	==>	-425.70	
5200.00	24.94	300.680	4945.91	632.48N	1066.12W	==>	-440.69	
5300.00	24.94	300.680	5036.58	654.00N	1102.39W	==>	-455.68	
5400.00	24.94	300.680	5127.26	675.51N	1138.66W	==>	-470.68	
5500.00	24.94	300.680	5217.93	697.03N	1174.93W	==>	-485.67	
5600.00	24.94	300.680	5308.60	718.55N	1211.19W	==>	-500.66	
5700.00	24.94	300.680	5399.28	740.06N	1247.46W	==>	-515.65	
5800.00	24.94	300.680	5489.95	761.58N	1283.73W	==>	-530.65	
5900.00	24.94	300.680	5580.62	783.10N	1320.00W	==>	-545.64	
6000.00	24.94	300.680	5671.29	804.61N	1356.27W	==>	-560.63	
6100.00	24.94	300.680	5761.97	826.13N	1392.54W	==>	-575.62	
6200.00	24.94	300.680	5852.64	847.65N	1428.81W	==>	-590.61	
6300.00	24.94	300.680	5943.31	869.17N	1465.08W	==>	-605.61	
6400.00	24.94	300.680	6033.99	890.68N	1501.35W	==>	-620.60	
6500.00	24.94	300.680	6124.66	912.20N	1537.62W	==>	-635.59	
6600.00	24.94	300.680	6215.33	933.72N	1573.89W	==>	-650.58	
6700.00	23.27	291.570	6306.26	953.81N	1610.25W	10.00	-664.16	
6800.00	21.83	265.560	6398.85	959.65N	1647.26W	10.00	-663.58	
6900.00	24.54	240.920	6490.98	948.08N	1684.04W	10.00	-645.89	
7000.00	30.30	223.010	6579.85	919.47N	1719.49W	10.00	-611.63	
7100.00	37.73	210.970	6662.78	874.67N	1752.53W	10.00	-561.84	
7200.00	46.02	202.560	6737.23	815.06N	1782.15W	10.00	-498.03	
7300.00	54.78	196.270	6800.95	742.44N	1807.46W	10.00	-422.15	
7400.00	63.79	191.220	6851.99	659.01N	1827.69W	10.00	-336.49	
7500.00	72.96	186.920	6888.82	567.32N	1842.22W	10.00	-243.67	
7600.00	82.21	183.020	6910.30	470.14N	1850.60W	10.00	-146.49	
7700.00	90.00	179.880	6916.00	370.44N	1852.68W	==>	-47.90	
7800.00	90.00	179.880	6916.00	270.44N	1852.48W	==>	50.59	
7900.00	90.00	179.880	6916.00	170.44N	1852.27W	==>	149.08	
8000.00	90.00	179.880	6916.00	70.44N	1852.07W	==>	247.57	
8100.00	90.00	179.880	6916.00	29.56S	1851.87W	==>	346.06	
8200.00	90.00	179.880	6916.00	129.56S	1851.67W	==>	444.55	
8300.00	90.00	179.880	6916.00	229.56S	1851.47W	==>	543.04	
8400.00	90.00	179.880	6916.00	329.56S	1851.26W	==>	641.53	
8500.00	90.00	179.880	6916.00	429.56S	1851.06W	==>	740.02	
8600.00	90.00	179.880	6916.00	529.56S	1850.86W	==>	838.51	
8700.00	90.00	179.880	6916.00	629.56S	1850.66W	==>	936.99	
8800.00	90.00	179.880	6916.00	729.56S	1850.46W	==>	1035.48	
8900.00	90.00	179.880	6916.00	829.56S	1850.25W	==>	1133.97	
9000.00	90.00	179.880	6916.00	929.56S	1850.05W	==>	1232.46	

All data is in Feet unless otherwise stated  
Coordinates are from Slot MD's are from Rig and TVD's are from Rig ( Planned Datum #1 5010.0ft above Mean Sea Level )  
Vertical Section is from 0.00N 0.00E on azimuth 189.850 degrees  
Bottom hole distance is 10696.66 Feet on azimuth 189.85 degrees from Wellhead  
Calculation method uses Minimum Curvature method  
Prepared by Microsoft  
Date Printed: 1-Dec-2017



SYSDRILL  
Well Design Combined Report  
Wellbore: W KNIGHT 16 (PWB)



Interpolated Wellpath								
MD[ft]	Inc[deg]	Azi[deg]	TVD[ft]	North[ft]	East[ft]	Dogleg [deg/100ft]	Vertical Section[ft]	All Station Comments
9100.00	90.00	179.880	6916.00	1029.56S	1849.85W	==>	1330.95	
9200.00	90.00	179.880	6916.00	1129.56S	1849.65W	==>	1429.44	
9300.00	90.00	179.880	6916.00	1229.56S	1849.45W	==>	1527.93	
9400.00	90.00	179.880	6916.00	1329.56S	1849.24W	==>	1626.42	
9500.00	90.00	179.880	6916.00	1429.56S	1849.04W	==>	1724.91	
9600.00	90.00	179.880	6916.00	1529.56S	1848.84W	==>	1823.40	
9700.00	90.00	179.880	6916.00	1629.56S	1848.64W	==>	1921.89	
9800.00	90.00	179.880	6916.00	1729.56S	1848.44W	==>	2020.38	
9900.00	90.00	179.880	6916.00	1829.56S	1848.23W	==>	2118.87	
10000.00	90.00	179.880	6916.00	1929.56S	1848.03W	==>	2217.36	
10100.00	90.00	179.880	6916.00	2029.56S	1847.83W	==>	2315.85	
10200.00	90.00	179.880	6916.00	2129.56S	1847.63W	==>	2414.34	
10300.00	90.00	179.880	6916.00	2229.56S	1847.43W	==>	2512.83	
10400.00	90.00	179.880	6916.00	2329.56S	1847.22W	==>	2611.32	
10500.00	90.00	179.880	6916.00	2429.56S	1847.02W	==>	2709.81	
10600.00	90.00	179.880	6916.00	2529.55S	1846.82W	==>	2808.30	
10700.00	90.00	179.880	6916.00	2629.55S	1846.62W	==>	2906.79	
10800.00	90.00	179.880	6916.00	2729.55S	1846.42W	==>	3005.28	
10900.00	90.00	179.880	6916.00	2829.55S	1846.21W	==>	3103.77	
11000.00	90.00	179.880	6916.00	2929.55S	1846.01W	==>	3202.26	
11100.00	90.00	179.880	6916.00	3029.55S	1845.81W	==>	3300.75	
11200.00	90.00	179.880	6916.00	3129.55S	1845.61W	==>	3399.24	
11300.00	90.00	179.880	6916.00	3229.55S	1845.41W	==>	3497.73	
11400.00	90.00	179.880	6916.00	3329.55S	1845.20W	==>	3596.22	
11500.00	90.00	179.880	6916.00	3429.55S	1845.00W	==>	3694.71	
11600.00	90.00	179.880	6916.00	3529.55S	1844.80W	==>	3793.20	
11700.00	90.00	179.880	6916.00	3629.55S	1844.60W	==>	3891.69	
11800.00	90.00	179.880	6916.00	3729.55S	1844.40W	==>	3990.18	
11900.00	90.00	179.880	6916.00	3829.55S	1844.19W	==>	4088.67	
12000.00	90.00	179.880	6916.00	3929.55S	1843.99W	==>	4187.16	
12100.00	90.00	179.880	6916.00	4029.55S	1843.79W	==>	4285.65	
12200.00	90.00	179.880	6916.00	4129.55S	1843.59W	==>	4384.14	
12300.00	90.00	179.880	6916.00	4229.55S	1843.39W	==>	4482.63	
12400.00	90.00	179.880	6916.00	4329.55S	1843.18W	==>	4581.12	
12500.00	90.00	179.880	6916.00	4429.55S	1842.98W	==>	4679.61	
12600.00	90.00	179.880	6916.00	4529.55S	1842.78W	==>	4778.10	
12700.00	90.00	179.880	6916.00	4629.55S	1842.58W	==>	4876.59	
12800.00	90.00	179.880	6916.00	4729.55S	1842.38W	==>	4975.08	
12900.00	90.00	179.880	6916.00	4829.55S	1842.17W	==>	5073.57	
13000.00	90.00	179.880	6916.00	4929.55S	1841.97W	==>	5172.06	
13100.00	90.00	179.880	6916.00	5029.55S	1841.77W	==>	5270.55	
13200.00	90.00	179.880	6916.00	5129.55S	1841.57W	==>	5369.04	
13300.00	90.00	179.880	6916.00	5229.55S	1841.37W	==>	5467.53	
13400.00	90.00	179.880	6916.00	5329.55S	1841.16W	==>	5566.02	
13500.00	90.00	179.880	6916.00	5429.55S	1840.96W	==>	5664.51	
13600.00	90.00	179.880	6916.00	5529.55S	1840.76W	==>	5763.00	
13700.00	90.00	179.880	6916.00	5629.55S	1840.56W	==>	5861.49	
13800.00	90.00	179.880	6916.00	5729.55S	1840.36W	==>	5959.98	
13900.00	90.00	179.880	6916.00	5829.55S	1840.15W	==>	6058.47	
14000.00	90.00	179.880	6916.00	5929.55S	1839.95W	==>	6156.96	
14100.00	90.00	179.880	6916.00	6029.55S	1839.75W	==>	6255.45	
14200.00	90.00	179.880	6916.00	6129.55S	1839.55W	==>	6353.94	
14300.00	90.00	179.880	6916.00	6229.55S	1839.35W	==>	6452.43	
14400.00	90.00	179.880	6916.00	6329.55S	1839.14W	==>	6550.92	
14500.00	90.00	179.880	6916.00	6429.55S	1838.94W	==>	6649.41	
14600.00	90.00	179.880	6916.00	6529.55S	1838.74W	==>	6747.90	
14700.00	90.00	179.880	6916.00	6629.55S	1838.54W	==>	6846.39	
14800.00	90.00	179.880	6916.00	6729.55S	1838.34W	==>	6944.88	
14900.00	90.00	179.880	6916.00	6829.55S	1838.13W	==>	7043.37	

All data is in Feet unless otherwise stated  
Coordinates are from Slot MD's are from Rig and TVD's are from Rig ( Planned Datum #1 5010.0ft above Mean Sea Level )  
Vertical Section is from 0.00N 0.00E on azimuth 189.850 degrees  
Bottom hole distance is 10696.66 Feet on azimuth 189.85 degrees from Wellhead  
Calculation method uses Minimum Curvature method  
Prepared by Microsoft  
Date Printed: 1-Dec-2017



SYS DRILL  
Well Design Combined Report  
Wellbore: W KNIGHT 16 (PWB)



Interpolated Wellpath								
MD[ft]	Inc[deg]	Azi[deg]	TVD[ft]	North[ft]	East[ft]	Dogleg [deg/100ft]	Vertical Section[ft]	All Station Comments
15000.00	90.00	179.880	6916.00	6929.55S	1837.93W	==>	7141.86	
15100.00	90.00	179.880	6916.00	7029.55S	1837.73W	==>	7240.35	
15200.00	90.00	179.880	6916.00	7129.55S	1837.53W	==>	7338.84	
15300.00	90.00	179.880	6916.00	7229.55S	1837.33W	==>	7437.33	
15400.00	90.00	179.880	6916.00	7329.55S	1837.12W	==>	7535.82	
15500.00	90.00	179.880	6916.00	7429.54S	1836.92W	==>	7634.31	
15600.00	90.00	179.880	6916.00	7529.54S	1836.72W	==>	7732.80	
15700.00	90.00	179.880	6916.00	7629.54S	1836.52W	==>	7831.29	
15800.00	90.00	179.880	6916.00	7729.54S	1836.32W	==>	7929.78	
15900.00	90.00	179.880	6916.00	7829.54S	1836.11W	==>	8028.27	
16000.00	90.00	179.880	6916.00	7929.54S	1835.91W	==>	8126.76	
16100.00	90.00	179.880	6916.00	8029.54S	1835.71W	==>	8225.25	
16200.00	90.00	179.880	6916.00	8129.54S	1835.51W	==>	8323.74	
16300.00	90.00	179.880	6916.00	8229.54S	1835.31W	==>	8422.23	
16400.00	90.00	179.880	6916.00	8329.54S	1835.10W	==>	8520.72	
16500.00	90.00	179.880	6916.00	8429.54S	1834.90W	==>	8619.21	
16600.00	90.00	179.880	6916.00	8529.54S	1834.70W	==>	8717.70	
16700.00	90.00	179.880	6916.00	8629.54S	1834.50W	==>	8816.18	
16800.00	90.00	179.880	6916.00	8729.54S	1834.30W	==>	8914.67	
16900.00	90.00	179.880	6916.00	8829.54S	1834.09W	==>	9013.16	
17000.00	90.00	179.880	6916.00	8929.54S	1833.89W	==>	9111.65	
17100.00	90.00	179.880	6916.00	9029.54S	1833.69W	==>	9210.14	
17200.00	90.00	179.880	6916.00	9129.54S	1833.49W	==>	9308.63	
17300.00	90.00	179.880	6916.00	9229.54S	1833.29W	==>	9407.12	
17400.00	90.00	179.880	6916.00	9329.54S	1833.08W	==>	9505.61	
17500.00	90.00	179.880	6916.00	9429.54S	1832.88W	==>	9604.10	
17600.00	90.00	179.880	6916.00	9529.54S	1832.68W	==>	9702.59	
17700.00	90.00	179.880	6916.00	9629.54S	1832.48W	==>	9801.08	
17800.00	90.00	179.880	6916.00	9729.54S	1832.28W	==>	9899.57	
17900.00	90.00	179.880	6916.00	9829.54S	1832.07W	==>	9998.06	
18000.00	90.00	179.880	6916.00	9929.54S	1831.87W	==>	10096.55	
18100.00	90.00	179.880	6916.00	10029.54S	1831.67W	==>	10195.04	
18200.00	90.00	179.880	6916.00	10129.54S	1831.47W	==>	10293.53	
18300.00	90.00	179.880	6916.00	10229.54S	1831.27W	==>	10392.02	
18400.00	90.00	179.880	6916.00	10329.54S	1831.06W	==>	10490.51	
18500.00	90.00	179.880	6916.00	10429.54S	1830.86W	==>	10589.00	
18600.00	90.00	179.880	6916.00	10529.54S	1830.66W	==>	10687.49	
18609.30	90.00	179.880	6916.00	10538.84S	1830.64W	==>	10696.66	

All data is in Feet unless otherwise stated  
Coordinates are from Slot MD's are from Rig ( Planned Datum #1 5010.0ft above Mean Sea Level )  
Vertical Section is from 0.00N 0.00E on azimuth 189.850 degrees  
Bottom hole distance is 10696.66 Feet on azimuth 189.85 degrees from Wellhead  
Calculation method uses Minimum Curvature method  
Prepared by Microsoft  
Date Printed: 1-Dec-2017



Targets							
Name	North[ft]	East[ft]	TVD[ft]	Latitude	Longitude	Northing	Easting
Knight 16 EP	386.50N	1852.71W	6916.00	40.19880000	-105.04868000	1315586.14	3126069.79
Knight 16 BH	10538.84S	1830.64W	6916.00	40.16881000	-105.04880000	1304661.29	3126091.86

Notes