



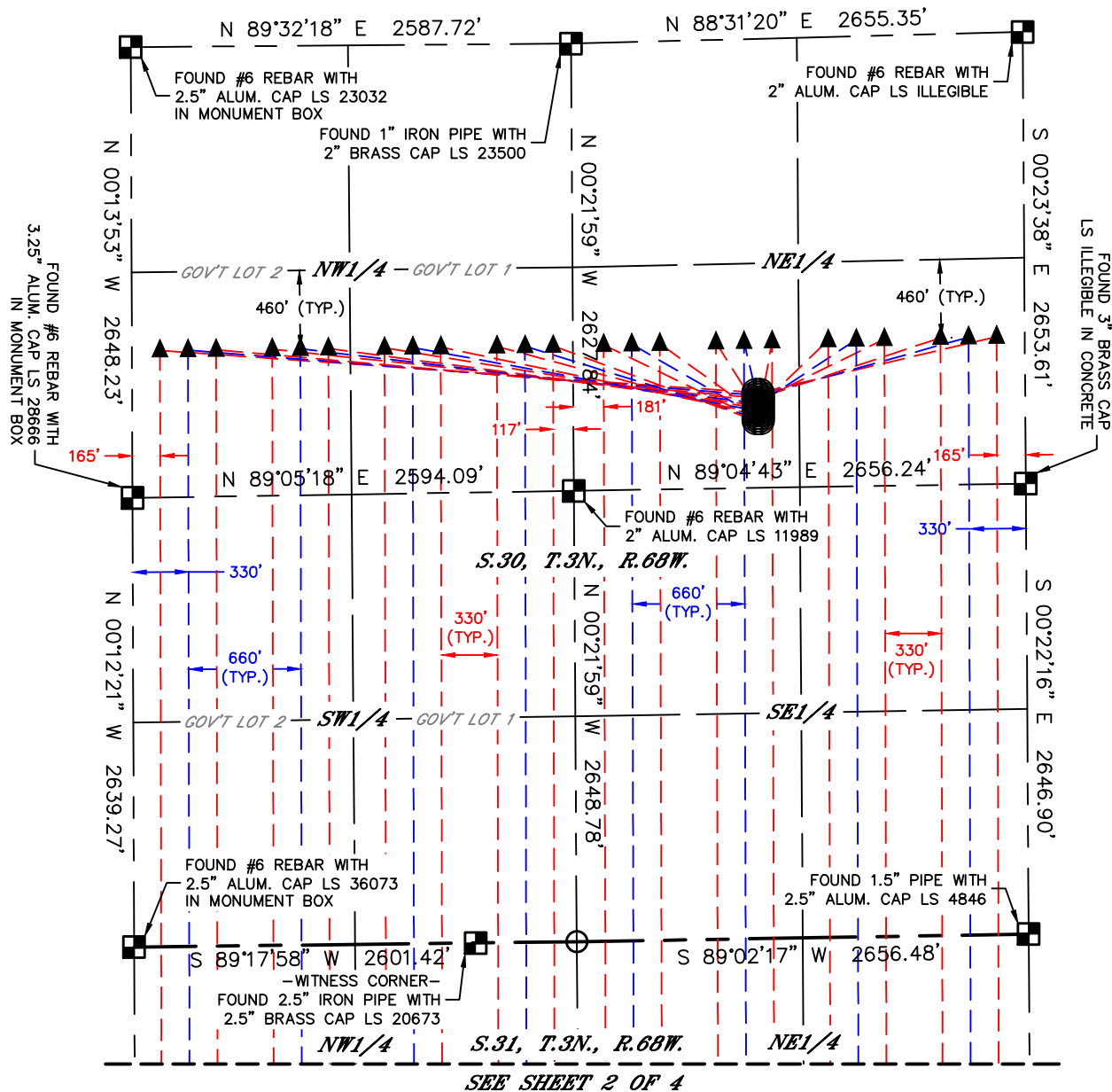
Lat40°, Inc. 6250 W. 10th Street, Unit 2, Greeley, CO 970-515-5294

# MULTI-WELL PLAN

**KNIGHT PAD**

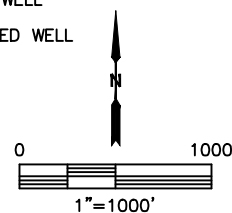
THIS MAP DOES NOT REPRESENT A BOUNDARY SURVEY

SECTION: 30  
TOWNSHIP: 3N  
RANGE: 68W  
6TH. P.M.  
WELD COUNTY, CO



## LEGEND

- = ALIQUOT MONUMENT AS DESCRIBED
- = CALCULATED POSITION
- = SURFACE HOLE LOCATION (SHL)
- ▲ = ENTRY POINT LOCATION (EP)
- <sub>BH</sub> = BOTTOM HOLE LOCATION (BHL)
- ⊙ = EXISTING WELL
- ⊙ = ABANDONED WELL





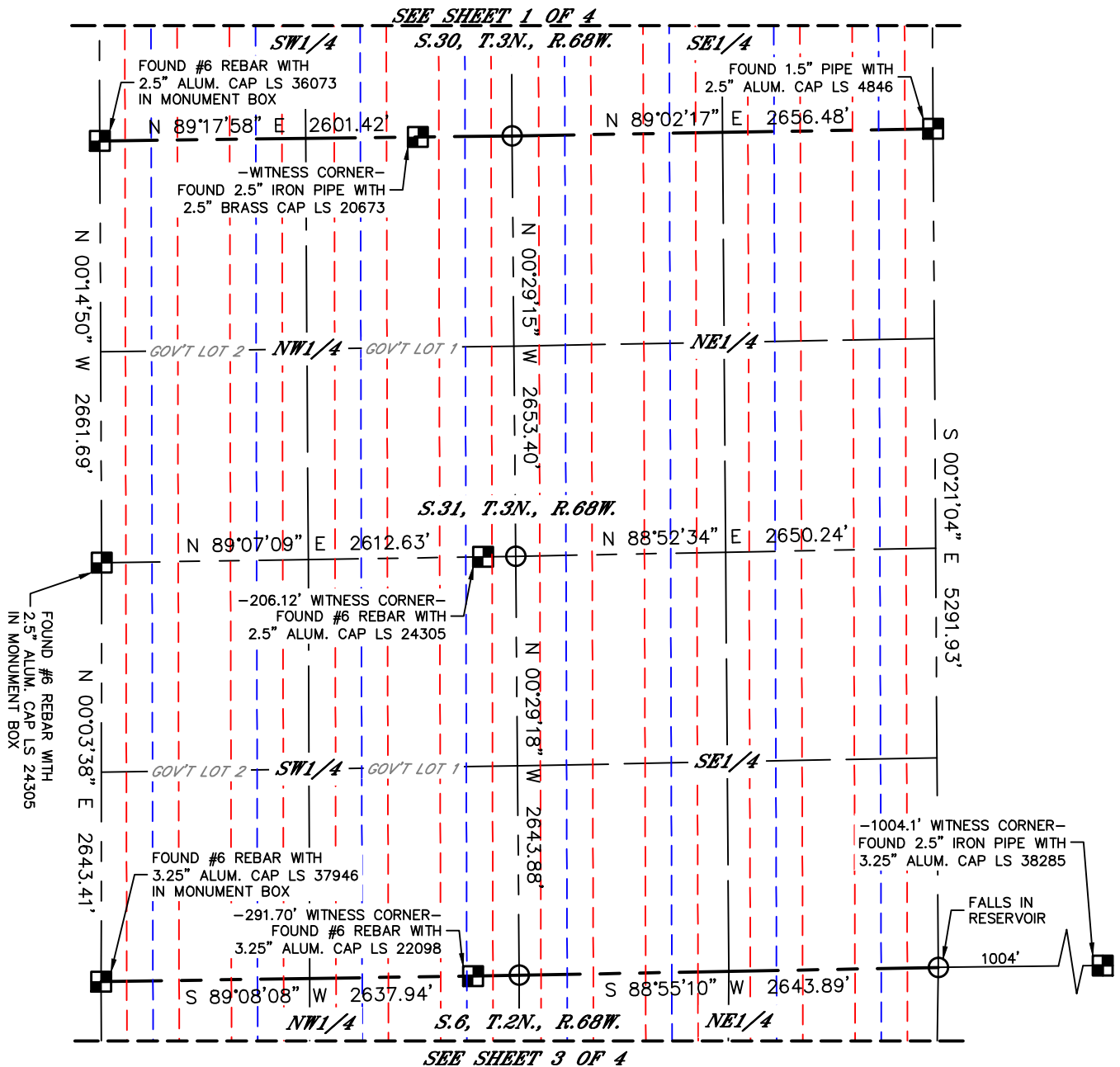
Lat40°, Inc. 6250 W. 10th Street, Unit 2, Greeley, CO 970-515-5294

# MULTI-WELL PLAN

**KNIGHT PAD**

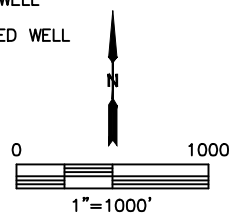
SECTION: 30  
TOWNSHIP: 3N  
RANGE: 68W  
6TH. P.M.  
WELD COUNTY, CO

THIS MAP DOES NOT REPRESENT A BOUNDARY SURVEY



## LEGEND

- = ALIQUOT MONUMENT AS DESCRIBED
- = CALCULATED POSITION
- = SURFACE HOLE LOCATION (SHL)
- ▲ = ENTRY POINT LOCATION (EP)
- <sub>BH</sub> = BOTTOM HOLE LOCATION (BHL)
- ⊙ = EXISTING WELL
- ⊙ = ABANDONED WELL



*SHEET 2 OF 4*

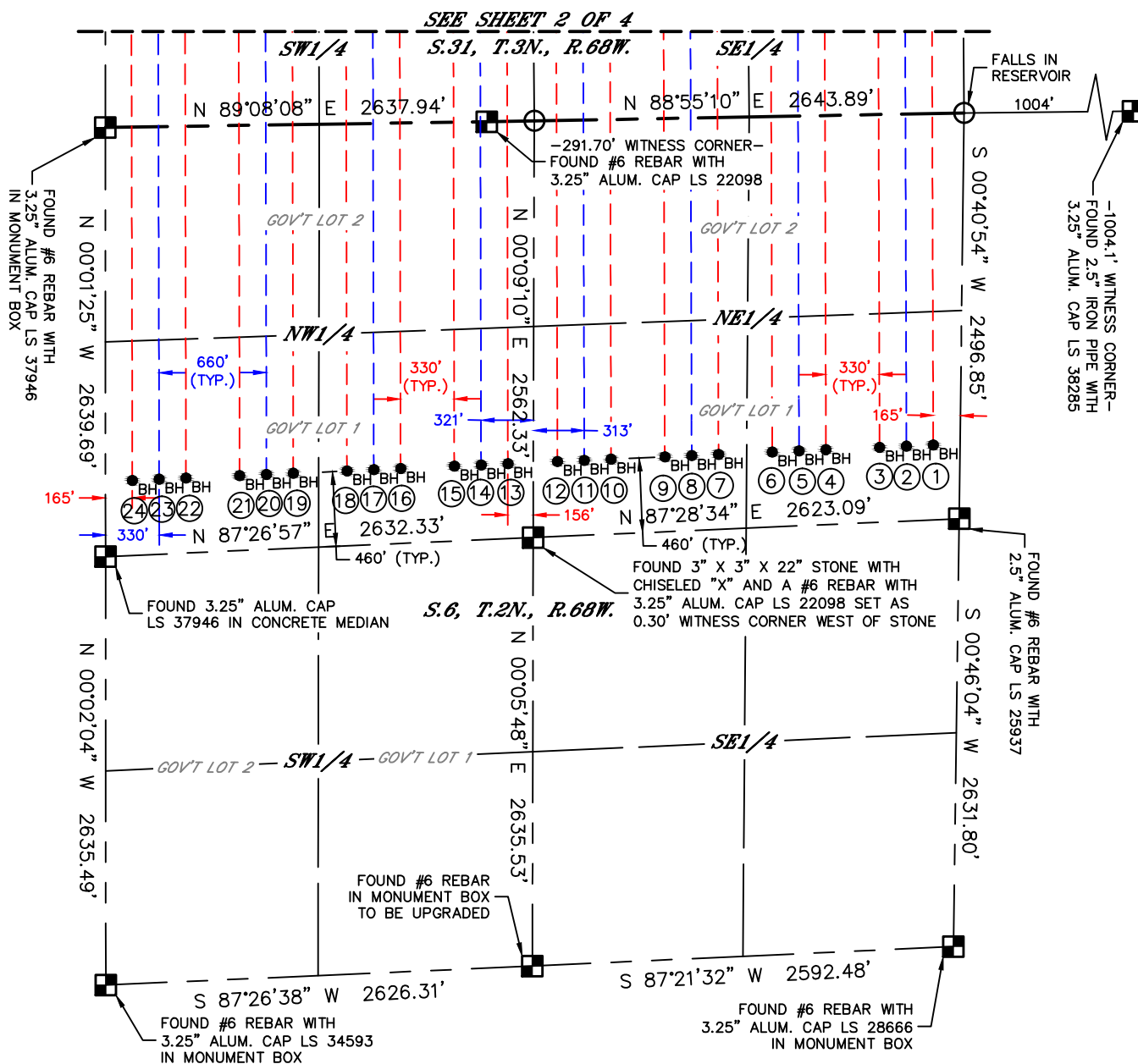
DATE: 11/7/2017  
PROJECT#: 2017091

## MULTI-WELL PLAN

## KNIGHT PAD



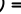

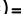


THIS MAP DOES NOT REPRESENT A BOUNDARY SURVEY

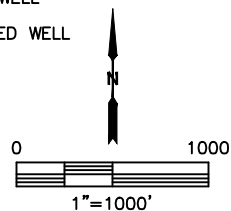
SECTION: 30  
TOWNSHIP: 3N  
RANGE: 68W  
6TH. P.M.  
WELD COUNTY, CO



#	WELL NAME	BHL FOOTAGE			BHL LAT °	BHL LONG °	BHL S-T-R	
1	KNIGHT 1	2039	FNL	165	FEL	40.16916	-105.03707	6-2-68
2	KNIGHT 2	2043	FNL	330	FEL	40.16914	-105.03766	6-2-68
3	KNIGHT 3	2048	FNL	495	FEL	40.16913	-105.03826	6-2-68
4	KNIGHT 4	2055	FNL	825	FEL	40.16909	-105.03944	6-2-68
5	KNIGHT 5	2060	FNL	990	FEL	40.16907	-105.04003	6-2-68
6	KNIGHT 6	2064	FNL	1155	FEL	40.16905	-105.04062	6-2-68
7	KNIGHT 7	2073	FNL	1485	FEL	40.16902	-105.04180	6-2-68
8	KNIGHT 8	2077	FNL	1650	FEL	40.16900	-105.04239	6-2-68
9	KNIGHT 9	2081	FNL	1815	FEL	40.16898	-105.04298	6-2-68
10	KNIGHT 10	2089	FNL	2145	FEL	40.16895	-105.04416	6-2-68
11	KNIGHT 11	2093	FNL	2310	FEL	40.16893	-105.04475	6-2-68
12	KNIGHT 12	2098	FNL	2475	FEL	40.16891	-105.04534	6-2-68
13	KNIGHT 13	2106	FNL	2475	FWL	40.16888	-105.04643	6-2-68
14	KNIGHT 14	2111	FNL	2310	FWL	40.16886	-105.04702	6-2-68
15	KNIGHT 15	2116	FNL	2145	FWL	40.16885	-105.04761	6-2-68
16	KNIGHT 16	2126	FNL	1815	FWL	40.16881	-105.04880	6-2-68
17	KNIGHT 17	2130	FNL	1650	FWL	40.16879	-105.04939	6-2-68
18	KNIGHT 18	2135	FNL	1485	FWL	40.16877	-105.04998	6-2-68
19	KNIGHT 19	2145	FNL	1155	FWL	40.16874	-105.05116	6-2-68
20	KNIGHT 20	2150	FNL	990	FWL	40.16872	-105.05175	6-2-68
21	KNIGHT 21	2155	FNL	825	FWL	40.16870	-105.05234	6-2-68
22	KNIGHT 22	2164	FNL	495	FWL	40.16867	-105.05352	6-2-68
23	KNIGHT 23	2169	FNL	330	FWL	40.16865	-105.05411	6-2-68
24	KNIGHT 24	2174	FNL	165	FWL	40.16863	-105.05470	6-2-68

### LEGEND

-  = ALIQUOT MONUMENT AS DESCRIBED  
 = CALCULATED POSITION  
 = SURFACE HOLE LOCATION (SHL)  
 = ENTRY POINT LOCATION (EP)  
 = BOTTOM HOLE LOCATION (BHL)  
 = EXISTING WELL  
 = ABANDONED WELL



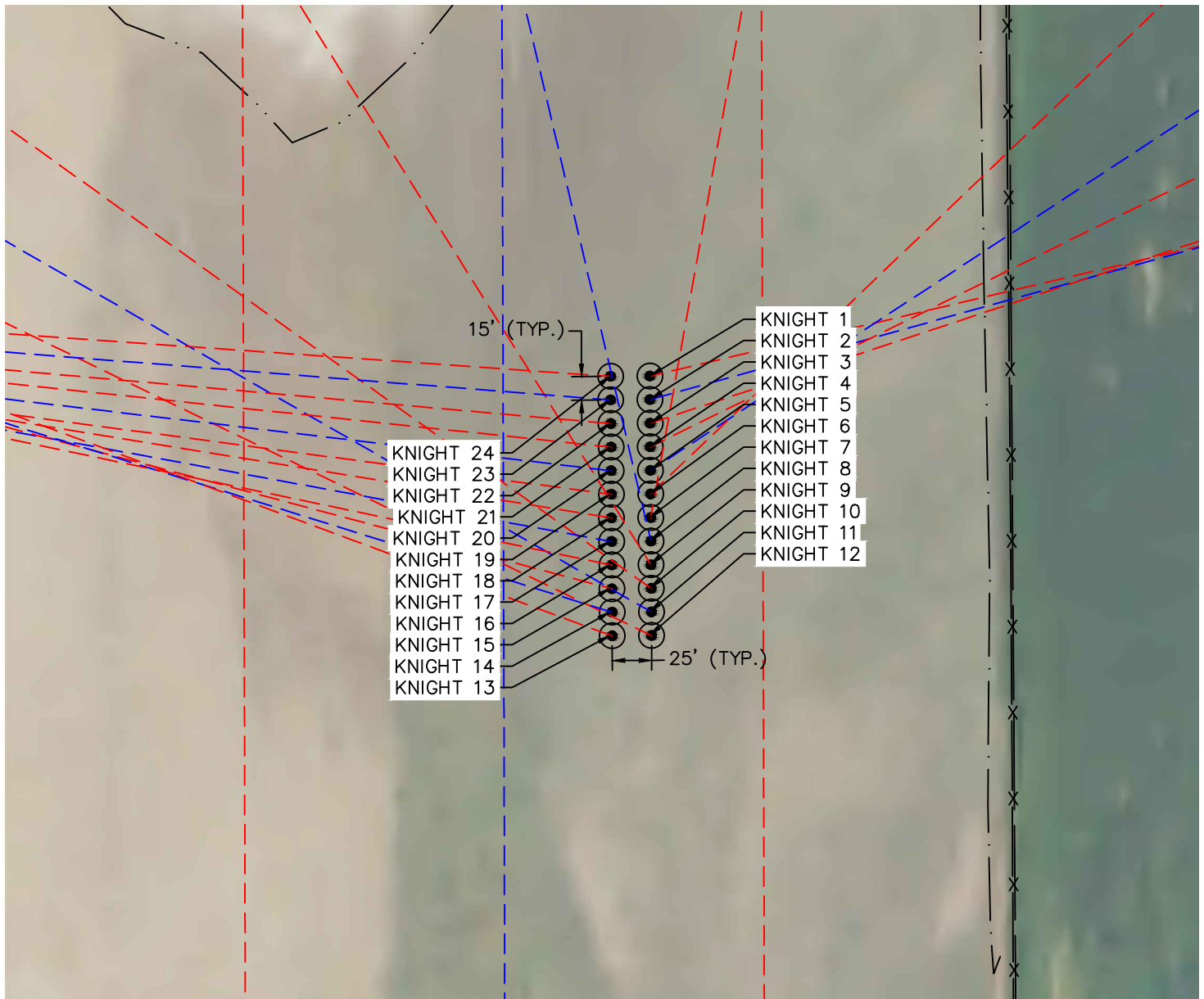


Lat40°, Inc. 6250 W. 10th Street, Unit 2, Greeley, CO 970-515-5294

# MULTI-WELL PLAN

KNIGHT PAD

SECTION: 30  
TOWNSHIP: 3N  
RANGE: 68W  
6TH. P.M.  
WELD COUNTY, CO



#	WELL NAME	SHL FOOTAGE				SHL LAT °	SHL LONG °	SHL PDOP	SHL ELEV (FT.)	SHL 1/4/1/4	SHL S-T-R
1	KNIGHT 1	2078	FNL	1558	FEL	40.19804	-105.04197	2.1	4995	SWNE	30-3-68
2	KNIGHT 2	2093	FNL	1558	FEL	40.19800	-105.04197	2.1	4995	SWNE	30-3-68
3	KNIGHT 3	2108	FNL	1558	FEL	40.19796	-105.04197	2.3	4995	SWNE	30-3-68
4	KNIGHT 4	2123	FNL	1558	FEL	40.19792	-105.04197	1.9	4995	SWNE	30-3-68
5	KNIGHT 5	2138	FNL	1558	FEL	40.19788	-105.04197	1.9	4994	SWNE	30-3-68
6	KNIGHT 6	2153	FNL	1558	FEL	40.19784	-105.04197	1.9	4994	SWNE	30-3-68
7	KNIGHT 7	2168	FNL	1558	FEL	40.19780	-105.04197	1.9	4994	SWNE	30-3-68
8	KNIGHT 8	2183	FNL	1558	FEL	40.19775	-105.04197	1.9	4994	SWNE	30-3-68
9	KNIGHT 9	2198	FNL	1558	FEL	40.19771	-105.04197	2.0	4994	SWNE	30-3-68
10	KNIGHT 10	2213	FNL	1558	FEL	40.19767	-105.04197	2.0	4994	SWNE	30-3-68
11	KNIGHT 11	2228	FNL	1558	FEL	40.19763	-105.04197	2.0	4993	SWNE	30-3-68
12	KNIGHT 12	2243	FNL	1558	FEL	40.19759	-105.04196	2.2	4993	SWNE	30-3-68
13	KNIGHT 13	2243	FNL	1583	FEL	40.19759	-105.04205	2.9	4993	SWNE	30-3-68
14	KNIGHT 14	2228	FNL	1583	FEL	40.19763	-105.04205	3.2	4993	SWNE	30-3-68
15	KNIGHT 15	2213	FNL	1583	FEL	40.19767	-105.04205	2.8	4993	SWNE	30-3-68
16	KNIGHT 16	2198	FNL	1583	FEL	40.19771	-105.04205	2.0	4993	SWNE	30-3-68
17	KNIGHT 17	2183	FNL	1583	FEL	40.19775	-105.04205	2.0	4994	SWNE	30-3-68
18	KNIGHT 18	2168	FNL	1583	FEL	40.19779	-105.04205	2.0	4994	SWNE	30-3-68
19	KNIGHT 19	2153	FNL	1583	FEL	40.19784	-105.04205	2.0	4994	SWNE	30-3-68
20	KNIGHT 20	2138	FNL	1583	FEL	40.19788	-105.04206	2.1	4994	SWNE	30-3-68
21	KNIGHT 21	2123	FNL	1583	FEL	40.19792	-105.04206	2.1	4994	SWNE	30-3-68
22	KNIGHT 22	2108	FNL	1583	FEL	40.19796	-105.04206	2.1	4994	SWNE	30-3-68
23	KNIGHT 23	2093	FNL	1583	FEL	40.19800	-105.04206	2.1	4995	SWNE	30-3-68
24	KNIGHT 24	2078	FNL	1583	FEL	40.19804	-105.04206	2.1	4995	SWNE	30-3-68

