

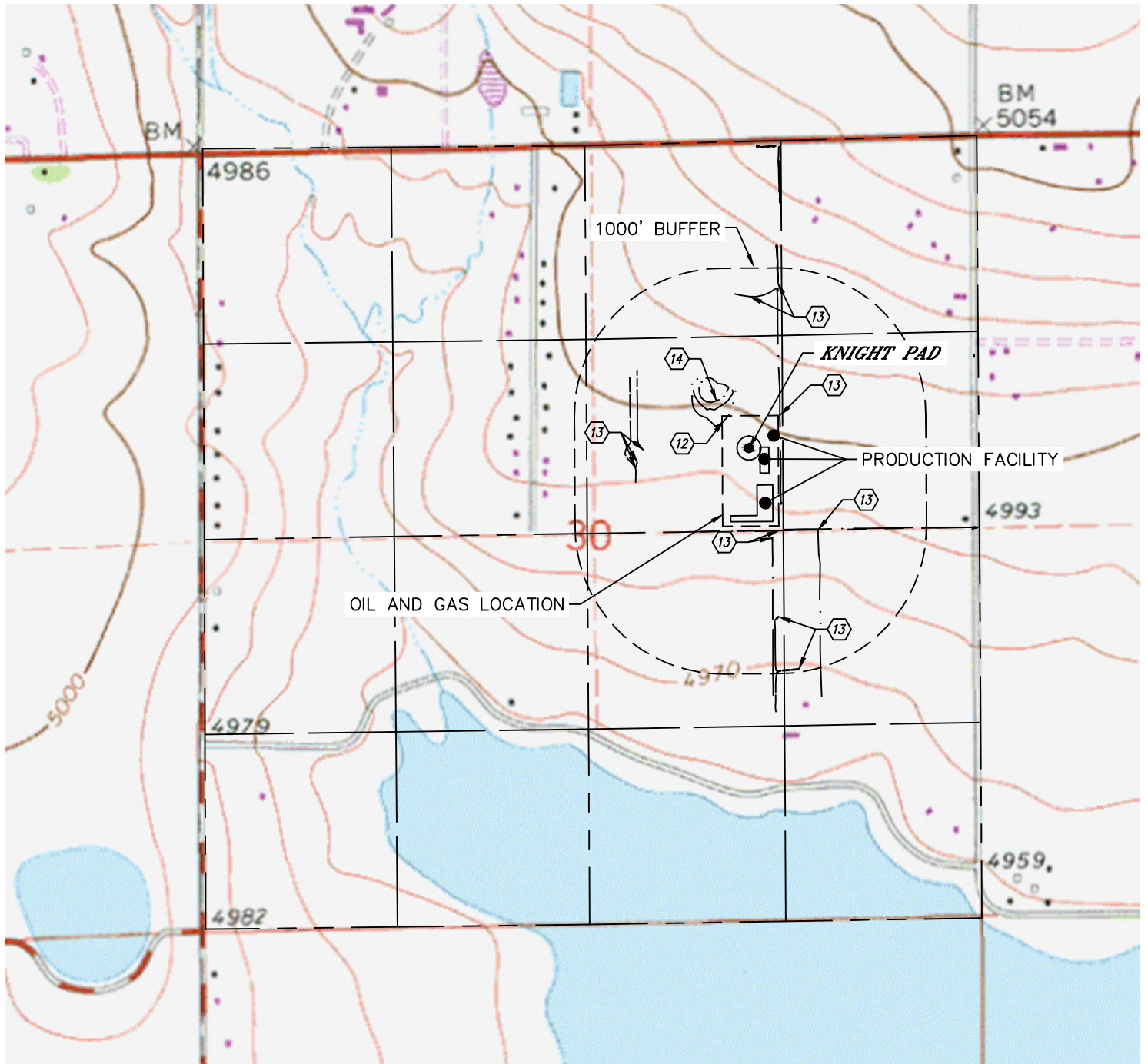


Lat40°, Inc. 6250 W. 10th Street, Unit 2, Greeley, CO 970-515-5294

HYDROLOGY MAP

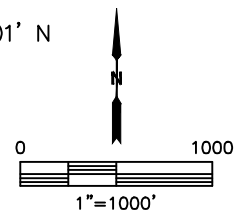
KNIGHT PAD

SECTION: 30
TOWNSHIP: 3N
RANGE: 68W
6TH. P.M.
WELD COUNTY, CO



DISTANCES MEASURED FROM THE EDGE OF THE OIL AND GAS LOCATION.

- ⑫ LOW AREA INSIDE LOCATION
- ⑬ DITCH 12' E, 31', 82' & 615' S, 266' & 976' SE, 536', 577' & 589' W, 806' & 901' N
- ⑭ POND 109' NW



DATE: 11/6/2017
PROJECT#: 2017091