



Lat40°, Inc. 6250 W. 10th Street, Unit 2, Greeley, CO 970-515-5294

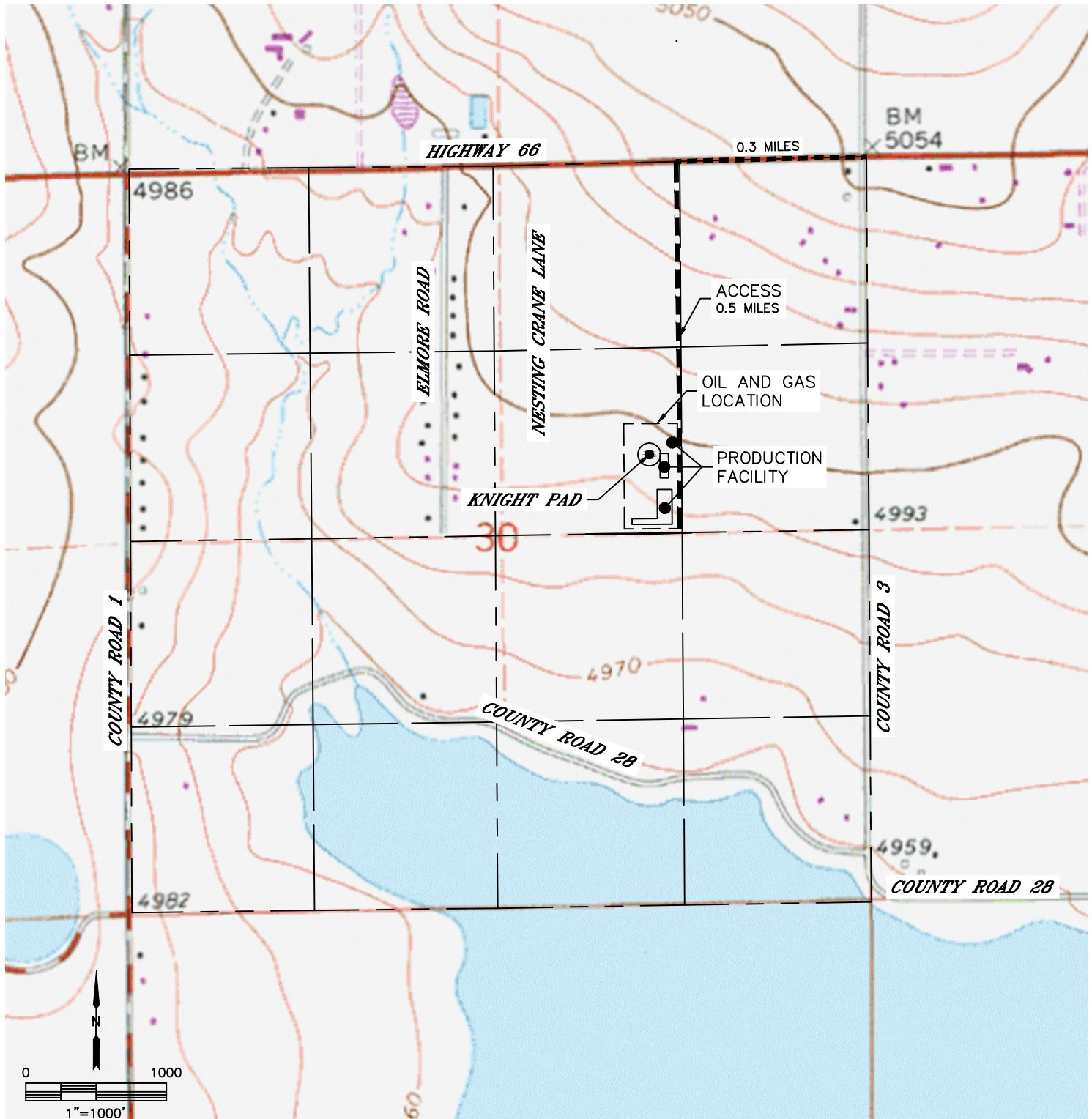
ACCESS ROAD MAP

KNIGHT PAD

SECTION: 30
TOWNSHIP: 3N
RANGE: 68W
6TH. P.M.
WELD COUNTY, CO

DRIVING DIRECTIONS TO KNIGHT PAD

FROM THE INTERSECTION OF COUNTY ROAD 3 AND HIGHWAY 66, GO WEST ON HIGHWAY 66 FOR 0.3 MILES TO AN EXISTING ACCESS TO THE SOUTH. GO SOUTH ON EXISTING/PROPOSED ACCESS FOR 0.5 MILES TO THE PROPOSED DRILL PAD AND PRODUCTION FACILITY.





Lat40°, Inc. 6250 W. 10th Street, Unit 2, Greeley, CO 970-515-5294

ACCESS ROAD MAP

KNIGHT PAD

SECTION: 30
TOWNSHIP: 3N
RANGE: 68W
6TH. P.M.
WELD COUNTY, CO

