



1/25/2017

Director Matt Lepore  
Colorado Oil and Gas Conservation Commission  
The Chancery Building  
1120 Lincoln Street, Suite 801  
Denver, CO 80203

RE: Grinde 01-64-05-6457CB  
Township 1 North, Range 64 West, 6th P.M.  
Section 5: NWSW (surface location)  
Weld County, Colorado

Proposed Wellbore Unit (640 acres):

Township 1 North, Range 64 West, 6<sup>th</sup> P.M.  
Section 5 - S2S2  
Section 4 - S2S2  
Township 1 North, Range 64 West, 6<sup>th</sup> P.M.  
Section 8 - N2N2  
Section 9 - N2N2

Dear Director Lepore:

Bill Barrett Corporation ("BBC") is planning to drill the captioned boundary well in accordance with the provisions of COGCC 318A.e.

BBC's wellbore spacing unit consists of Section 5 -S2S2 of T1N-64W, Section 4-S2S2 of T1N-64W and Section 8 -N2N2 of T1N-64W, Section 9 - N2N2 of T1N-64W, creating the above referenced spacing unit in which we will target the Niobrara formation. I certify that all of the owners within the proposed wellbore spacing unit were noticed and no objections were received.

Enclosed is a copy of the following document to assist you in your review and approval of BBC's proposed changes for the captioned well.

- Plat illustrating the proposed wellbore spacing unit on existing location plat

Thank you for your attention to the enclosed. BBC respectfully requests that the COGCC review the enclosed information and approve the proposed changes for the captioned well.

**BILL BARRETT CORPORATION**

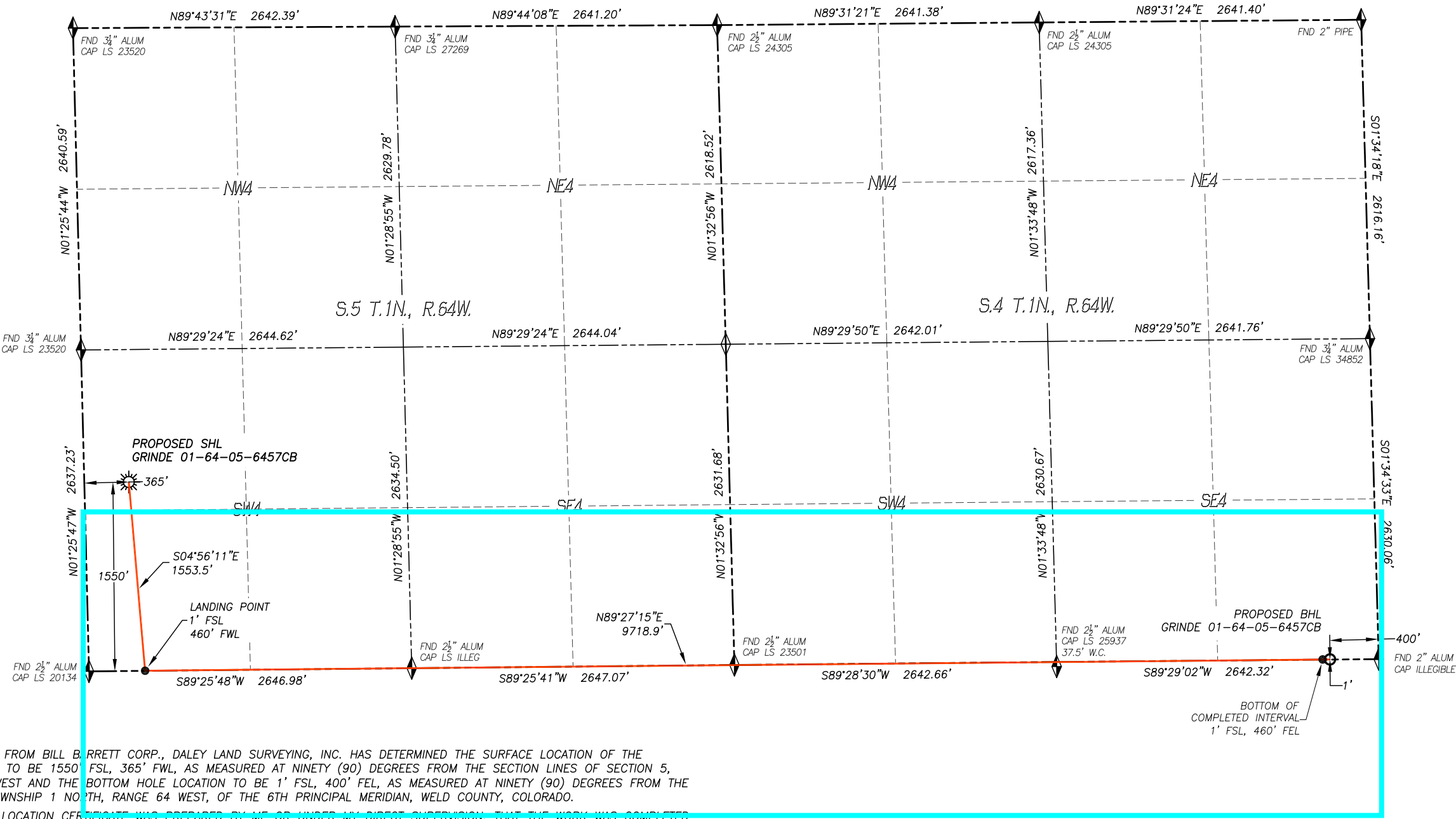
A handwritten signature in blue ink that reads "Matt Barber".

**Matt Barber**  
**Sr. Permit Analyst**

1099 18<sup>th</sup> Street, Suite 2300  
Denver, CO 80202  
P 303.293.9100  
F 303.291.0420

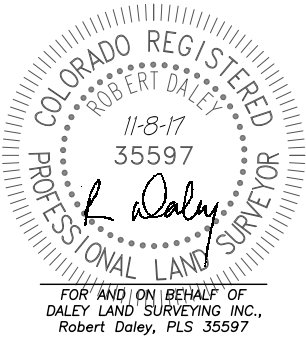
WELL LOCATION CERTIFICATE  
GRINDE 01-64-05-6457CB

SECTION 5, TOWNSHIP 1 NORTH, RANGE 64 WEST OF THE 6TH P.M., WELD COUNTY



IN ACCORDANCE WITH A REQUEST FROM BILL BARRETT CORP., DALEY LAND SURVEYING, INC. HAS DETERMINED THE SURFACE LOCATION OF THE GRINDE 01-64-05-6457CB WELL TO BE 1550' FSL, 365' FWL, AS MEASURED AT NINETY (90) DEGREES FROM THE SECTION LINES OF SECTION 5, TOWNSHIP 1 NORTH, RANGE 64 WEST AND THE BOTTOM HOLE LOCATION TO BE 1' FSL, 400' FEL, AS MEASURED AT NINETY (90) DEGREES FROM THE SECTION LINES OF SECTION 4, TOWNSHIP 1 NORTH, RANGE 64 WEST, OF THE 6TH PRINCIPAL MERIDIAN, WELD COUNTY, COLORADO.

I HEREBY STATE THAT THIS WELL LOCATION CERTIFICATE WAS PREPARED BY ME OR UNDER MY DIRECT SUPERVISION, THAT THE WORK WAS COMPLETED ON 11/2/2017 FOR AND ON BEHALF OF BILL BARRETT CORP., AND THAT THIS MAP DOES NOT REPRESENT A BOUNDARY SURVEY, IT IS NOT A LAND SURVEY PLAT OR AN IMPROVEMENT SURVEY PLAT AND IT IS NOT TO BE RELIED UPON FOR THE ESTABLISHMENT OF FENCE, BUILDING OR OTHER FUTURE IMPROVEMENT LINES.



- NOTES:**
- 1) BEARINGS FOR THIS MAP ARE ASSUMED AND BASED UPON GPS OBSERVATIONS MADE BETWEEN MONUMENTS LOCATED AT THE NORTH QUARTER CORNER AND NORTHEAST CORNER OF SECTION 5, T.1N., R.64W.
  - 2) HORIZONTAL DATUM IS NAD83.
  - 3) VERTICAL DATUM IS NAVD88 AND ORIGINATES FROM THE LOCAL C.O.R.S. NETWORK, UTILIZING THE GEOID12A MODEL.
  - 4) SEE LOCATION DRAWING FOR VISIBLE IMPROVEMENTS WITHIN 500' OF PROPOSED DISTURBED AREA.
  - 5) SURFACE USE: AGRICULTURAL.
  - 6) INST. OPERATOR: SCOTT ESTABROOKS.

NEAREST CULTURAL ITEMS:		NAD 83 LATITUDE AND LONGITUDE	
BUILDING:	418'± SW	<b>SURFACE LOCATION:</b>	
BUILDING UNIT:	692'± SW	LATITUDE: N40.07750°	
HIGH OCC. BLD. UNIT:	5280'±	LONGITUDE: W104.58295°	
DES. OUTSIDE ACTIVITY AREA:	5280'±	ELEV: 5031'	
PUBLIC ROAD:	352'± W	PDOP: 1.3	
ABOVE GROUND UTILITY:	339'± W	QTR/QTR: NW4/SW4	
RAILROAD:	5280'±	<b>LANDING POINT:</b>	
PROPERTY LINE:	365'± W	LATITUDE: N40.07325°	
		LONGITUDE: W104.58253°	
		<b>BOTTOM COMPLETED INT.:</b>	
		LATITUDE: N40.07322°	
		LONGITUDE: W104.54803°	
		<b>BOTTOM HOLE:</b>	
		LATITUDE: N40.07322°	
		LONGITUDE: W104.54781°	

**LEGEND**

- ◆ FOUND MONUMENT AS DESCRIBED
- ☀ PROPOSED WELL
- ⊙ EXISTING WELL
- BOTTOM HOLE
- ⊘ ABANDONED WELL
- ◆ CALCULATED POSITION

**SCALE:** 1" = 1000'

**North Arrow**

**Bill Barrett Corporation**

**DALEY LAND SURVEYING, INC.**

303.953.9841