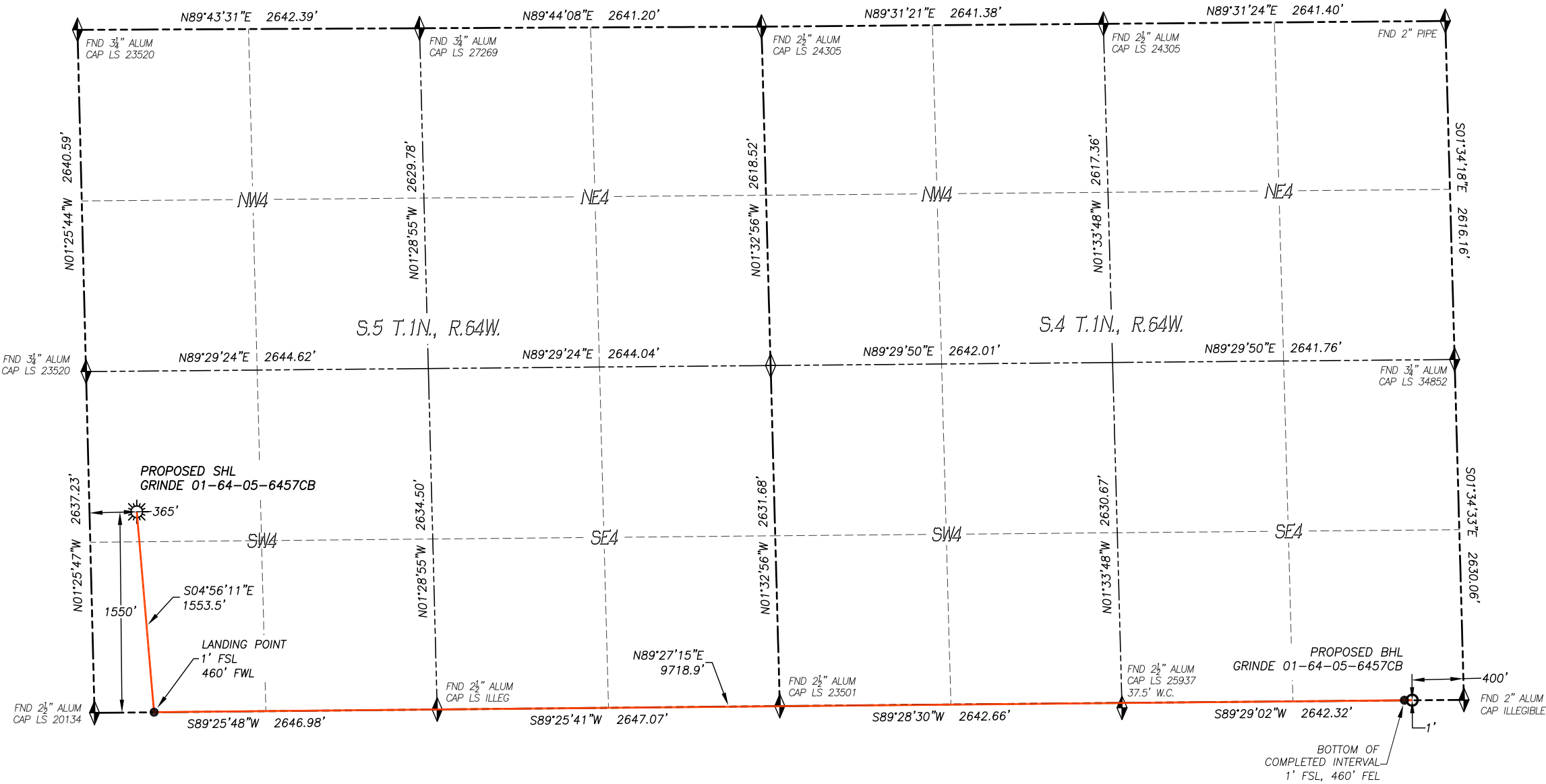


WELL LOCATION CERTIFICATE  
GRINDE 01-64-05-6457CB

SECTION 5, TOWNSHIP 1 NORTH, RANGE 64 WEST OF THE 6TH P.M., WELD COUNTY



IN ACCORDANCE WITH A REQUEST FROM BILL BARRETT CORP., DALEY LAND SURVEYING, INC. HAS DETERMINED THE SURFACE LOCATION OF THE GRINDE 01-64-05-6457CB WELL TO BE 1550' FSL, 365' FWL, AS MEASURED AT NINETY (90) DEGREES FROM THE SECTION LINES OF SECTION 5, TOWNSHIP 1 NORTH, RANGE 64 WEST AND THE BOTTOM HOLE LOCATION TO BE 1' FSL, 400' FEL, AS MEASURED AT NINETY (90) DEGREES FROM THE SECTION LINES OF SECTION 4, TOWNSHIP 1 NORTH, RANGE 64 WEST, OF THE 6TH PRINCIPAL MERIDIAN, WELD COUNTY, COLORADO.

I HEREBY STATE THAT THIS WELL LOCATION CERTIFICATE WAS PREPARED BY ME OR UNDER MY DIRECT SUPERVISION, THAT THE WORK WAS COMPLETED ON 11/2/2017 FOR AND ON BEHALF OF BILL BARRETT CORP., AND THAT THIS MAP DOES NOT REPRESENT A BOUNDARY SURVEY, IT IS NOT A LAND SURVEY PLAT OR AN IMPROVEMENT SURVEY PLAT AND IT IS NOT TO BE RELIED UPON FOR THE ESTABLISHMENT OF FENCE, BUILDING OR OTHER FUTURE IMPROVEMENT LINES.

- NOTES:**
- 1) BEARINGS FOR THIS MAP ARE ASSUMED AND BASED UPON GPS OBSERVATIONS MADE BETWEEN MONUMENTS LOCATED AT THE NORTH QUARTER CORNER AND NORTHEAST CORNER OF SECTION 5, T.1N., R.64W.
  - 2) HORIZONTAL DATUM IS NAD83.
  - 3) VERTICAL DATUM IS NAVD88 AND ORIGINATES FROM THE LOCAL C.O.R.S. NETWORK, UTILIZING THE GEOID12A MODEL.
  - 4) SEE LOCATION DRAWING FOR VISIBLE IMPROVEMENTS WITHIN 500' OF PROPOSED DISTURBED AREA.
  - 5) SURFACE USE: AGRICULTURAL.
  - 6) INST. OPERATOR: SCOTT ESTABROOKS.

NEAREST CULTURAL ITEMS:	
BUILDING:	418'± SW
BUILDING UNIT:	692'± SW
HIGH OCC. BLD. UNIT:	5280'±
DES. OUTSIDE ACTIVITY AREA:	5280'±
PUBLIC ROAD:	352'± W
ABOVE GROUND UTILITY:	339'± W
RAILROAD:	5280'±
PROPERTY LINE:	365'± W

NAD 83 LATITUDE AND LONGITUDE	
<b>SURFACE LOCATION:</b>	
LATITUDE:	N40.07750°
LONGITUDE:	W104.58295°
ELEV:	5031'
PDOP:	1.3
QTR/QTR:	NW4/SW4
<b>LANDING POINT:</b>	
LATITUDE:	N40.07325°
LONGITUDE:	W104.58253°
<b>BOTTOM COMPLETED INT.:</b>	
LATITUDE:	N40.07322°
LONGITUDE:	W104.54803°
<b>BOTTOM HOLE:</b>	
LATITUDE:	N40.07322°
LONGITUDE:	W104.54781°

- LEGEND**
- ◆ FOUND MONUMENT AS DESCRIBED
  - ☀ PROPOSED WELL
  - ⊙ EXISTING WELL
  - BOTTOM HOLE
  - ⊘ ABANDONED WELL
  - ◆ CALCULATED POSITION

