



PHOENIX TECHNOLOGY SERVICES

MD
1:240
Feet

MWD Gamma / ROP (5")

Client: *Extraction Oil & Gas*

Well Name: Mickey 5

API/UWID: 05-123-43855

County: Weld

Permit #: AFE - 14565

State: Colorado

Country: USA

Longitude: 104° 54' 51.91589 W

Latitude: 40° 30' 59.03778 N

Personnel

Company Representative

Kalyn Holgate

Geologist

Directional Driller(s)

Scott Sanford

Colby Hansen

MWD Operator(s)

Kovacs Hruska

Ben Hursh

Justin Schram

Bottom Hole Temp: 267.1 °F
Log Start Depth: 1500.00 ft

Bottom Hole Temp: 267.1 °F

Log Start Depth: 1500.00 ft

Log End Depth: 17600.00 ft

Comments:

Main Leg

PHOENIX TECHNOLOGY SERVICES LP ("PHOENIX") DOES NOT MAKE AND EXPRESSLY DISCLAIMS ALL WARRANTIES, REPRESENTATIONS AND CONDITIONS, WITH RESPECT TO THE INFORMATION CONTAINED IN THIS DOCUMENT, WHETHER ORAL OR WRITTEN, EXPRESS OR IMPLIED OR ARISING FROM CONTRACT OR STATUTE INCLUDING, WITHOUT LIMITATION, THE IMPLIED WARRANTIES OF MERCHANTABILITY, ACCURACY AND FITNESS FOR A PARTICULAR PURPOSE. ANYONE USING THIS INFORMATION DOES SO AT THEIR OWN RISK AND ACKNOWLEDGES AND AGREES THAT PHOENIX SHALL NOT BE LIABLE FOR ANY ERROR, OMISSION, DEFECT, DEFICIENCY, OR NONCONFORMITY IN THE INFORMATION AND WITHOUT LIMITING THE FOREGOING, PHOENIX DOES NOT WARRANT THAT THE INFORMATION (OR THE USE THEREOF) WILL BE FREE OF ALL ERRORS OR THAT IT DOES NOT INFRINGE ANY THIRD PARTY RIGHTS. ANYONE USING THE INFORMATION AGREES TO INDEMNIFY AND HOLD PHOENIX HARMLESS FROM ALL CLAIMS, ACTIONS, COSTS (INCLUDING LEGAL COSTS) ON A SOLICITOR AND ITS OWN CLIENT BASIS) AND LIABILITIES ARISING FROM OR IN CONNECTION WITH THE USE OF THE INFORMATION.

60554

	Run 1					
Run Start Depth (ft)	1500.00					
Run End Depth (ft)	17600.41					
Run Start Date	12/5/2016					
Run Start Time	5:15 AM					
Run End Date	12/10/2016					
Run End Time	5:07 AM					

60554

	Run 1					
Gamma Probe Serial No	EGNF0121					
Probe Cal Ratio	1					
Gamma Scale Factor	2.875					
Tool Carrier ID (in)	4.490					
Tool Carrier OD (in)	6.500					
Survey-to-Bit (PTB) (ft)	64.60					
Gamma-to-Bit (GTB) (ft)	63.41					
Annular Pressure-to-Bit (APTB) (ft)	0.00					

60554

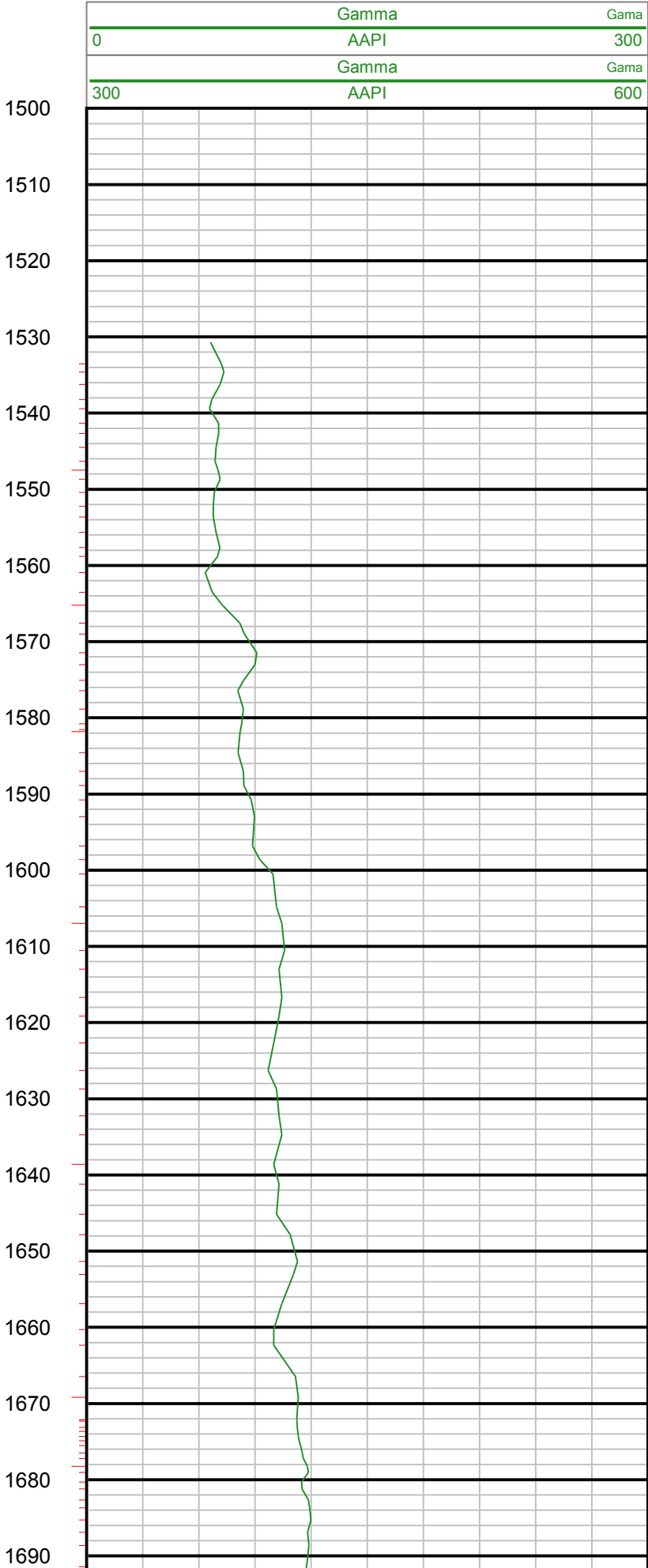
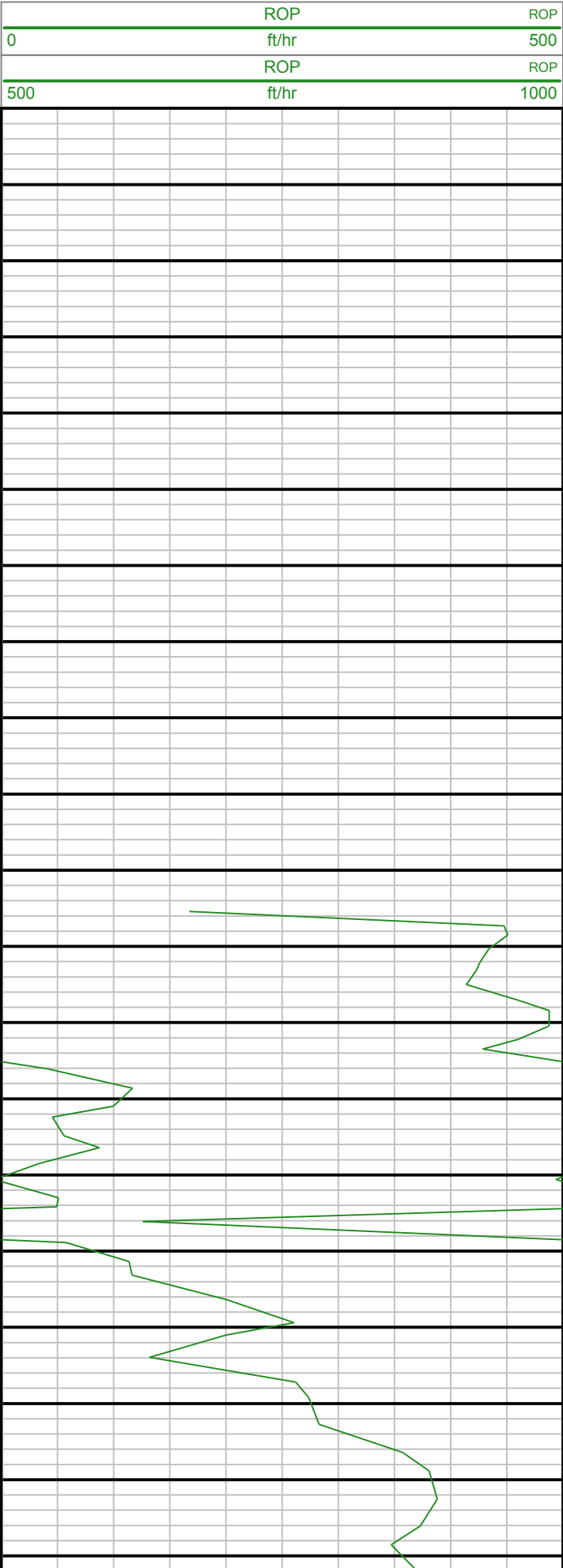
	Run 1					
Hole Size (in)	7.83					
Casing Start Depth (ft)	0.00					
Casing End Depth (ft)	1540.00					
Casing Size (in)	9.625					

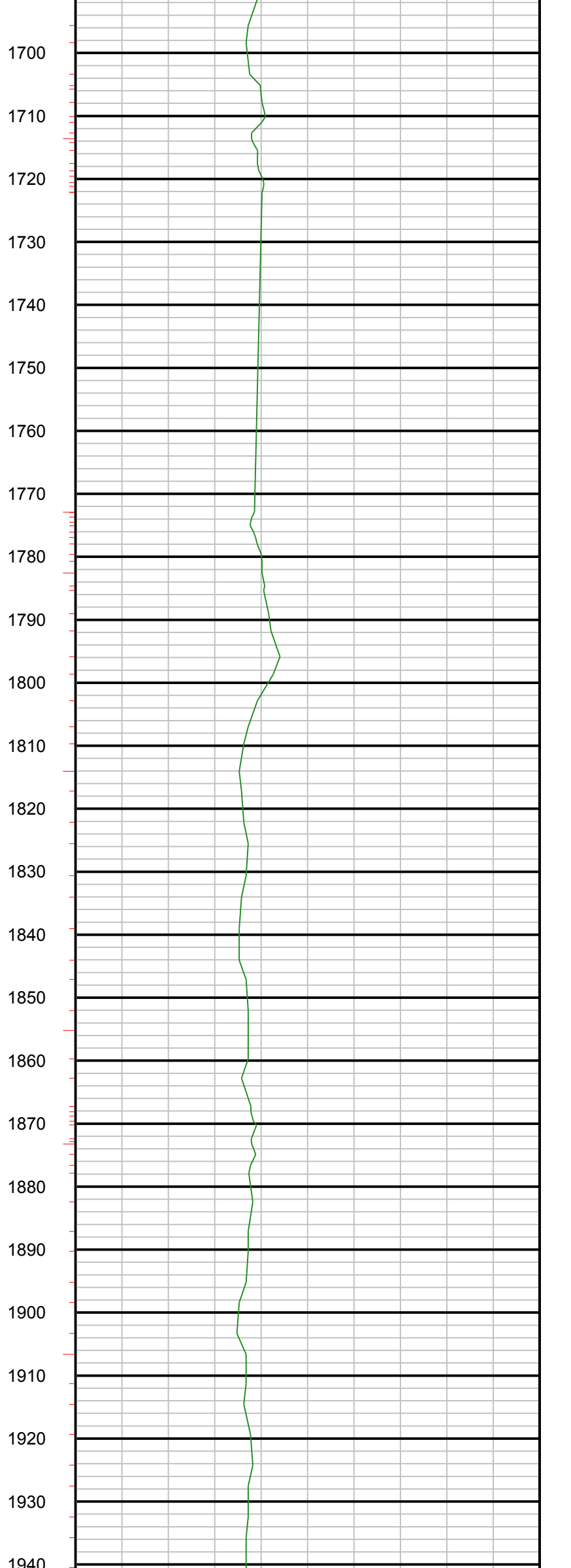
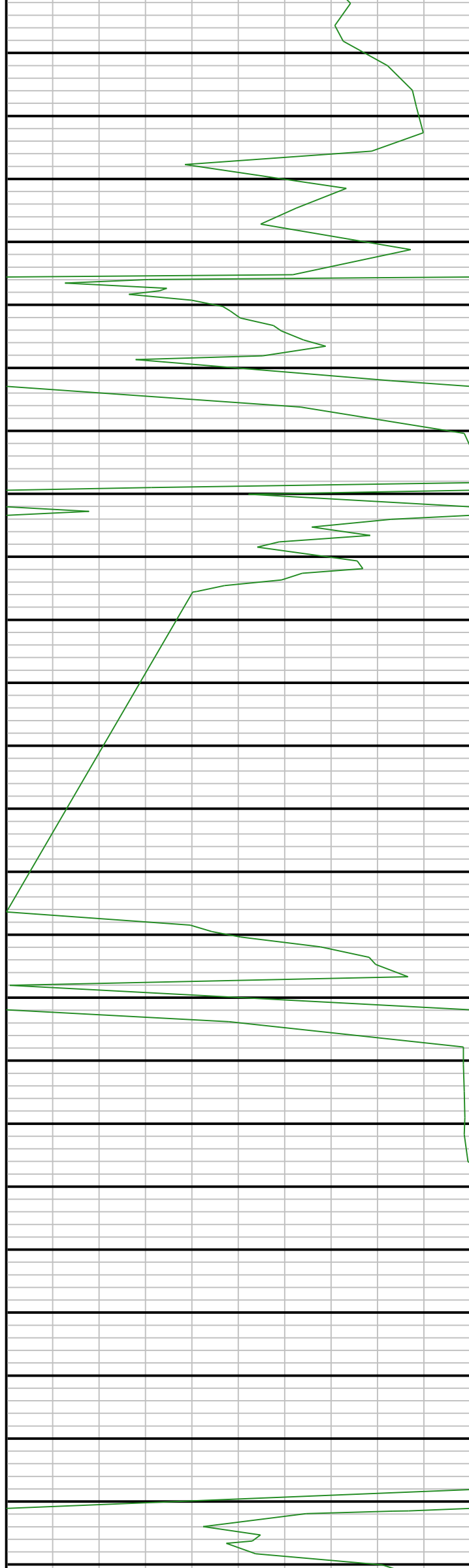
Casing Size (in)	9.625					
Mud Type	Invert					
Mud Weight (lb/gal)	9.7					
Mud Viscosity (s)	43					
Weighting Agent	Barite					
Mud KCL Content (%)	0.000					

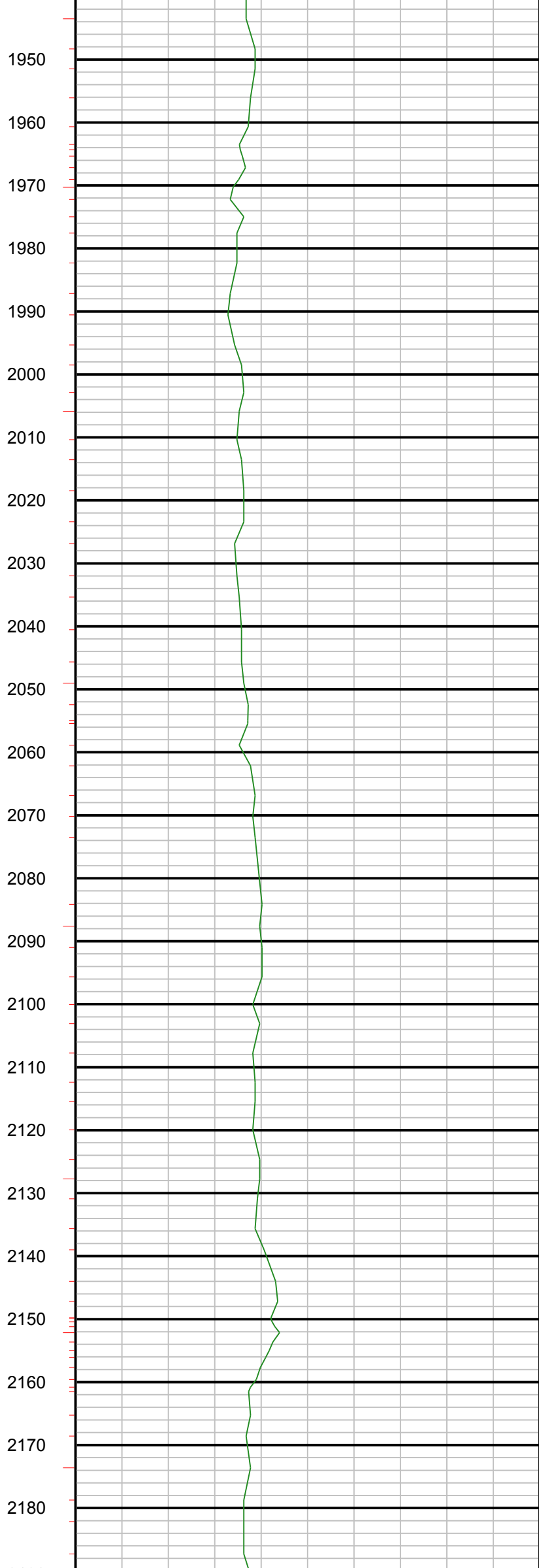
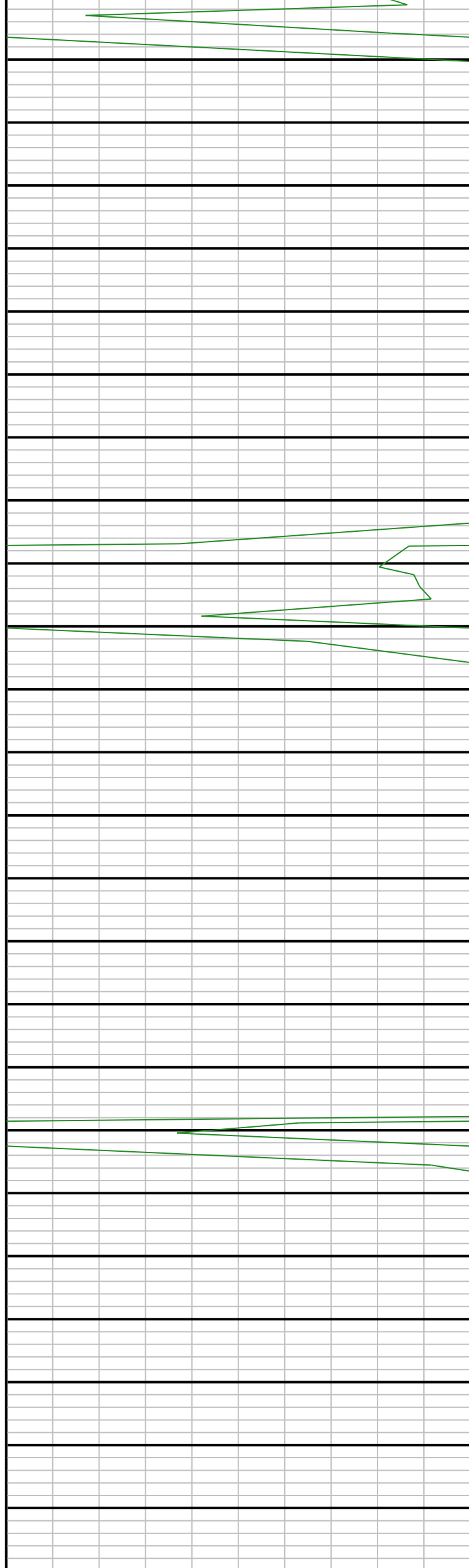
Log

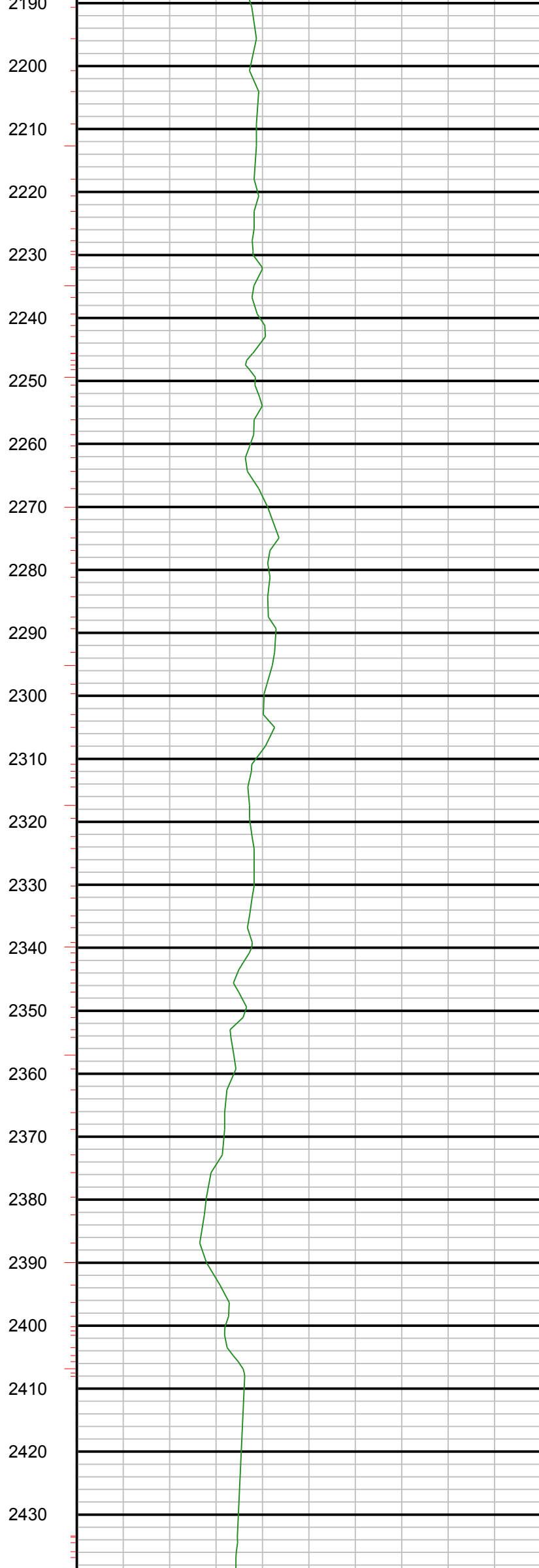
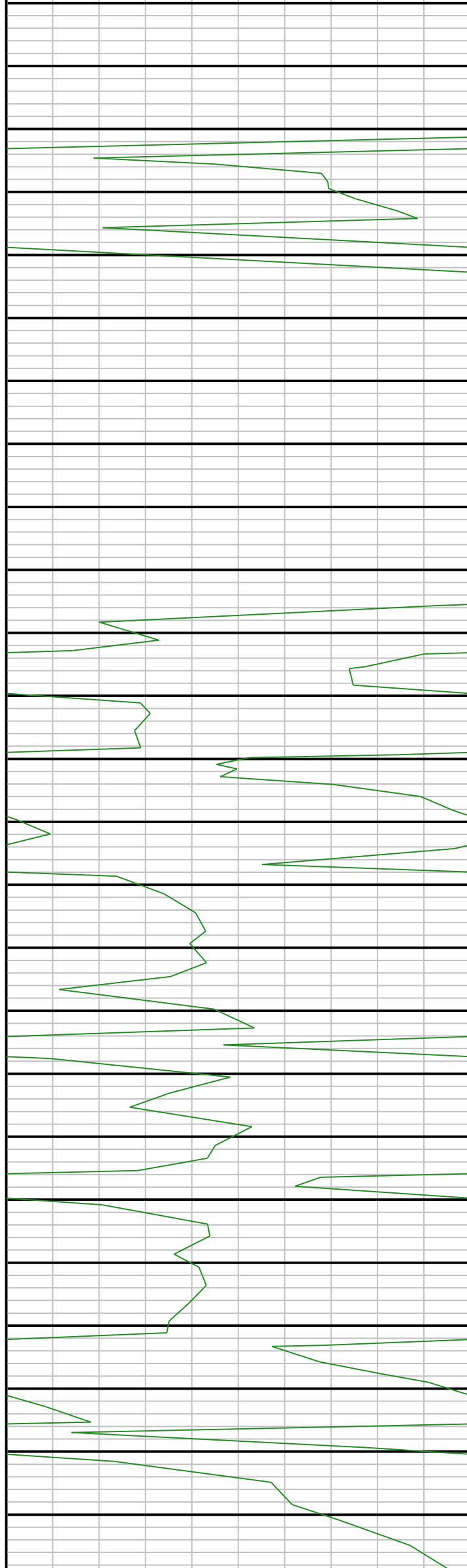
1:240

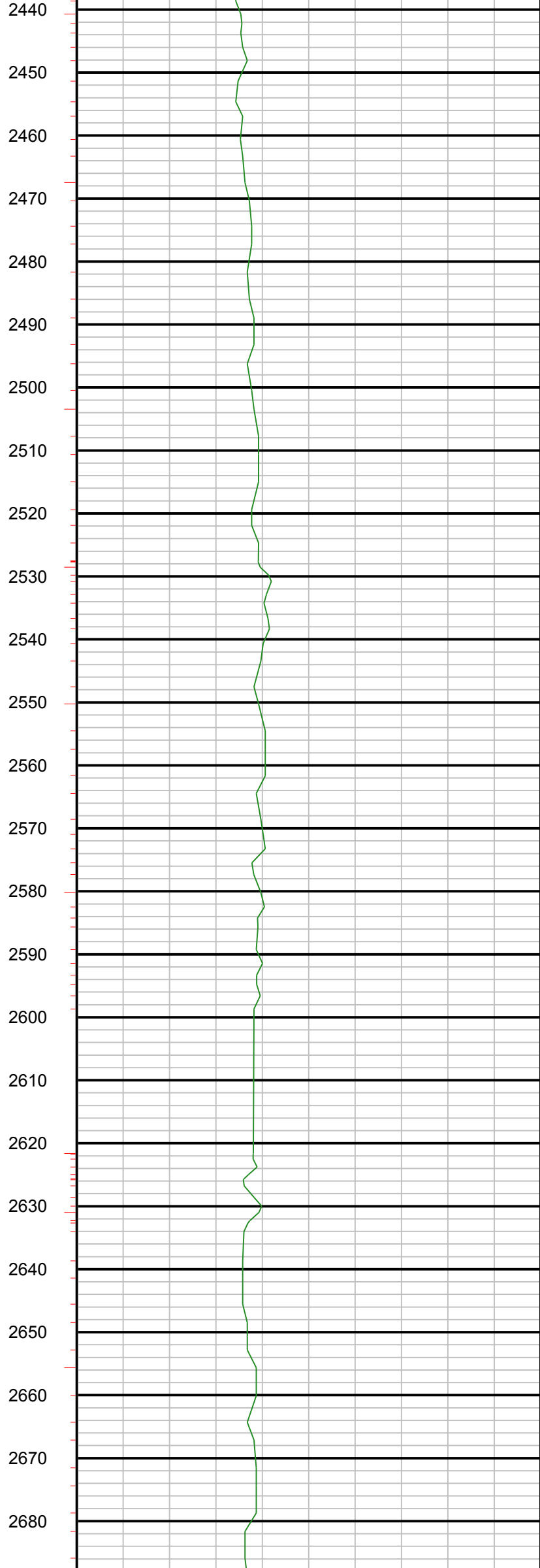
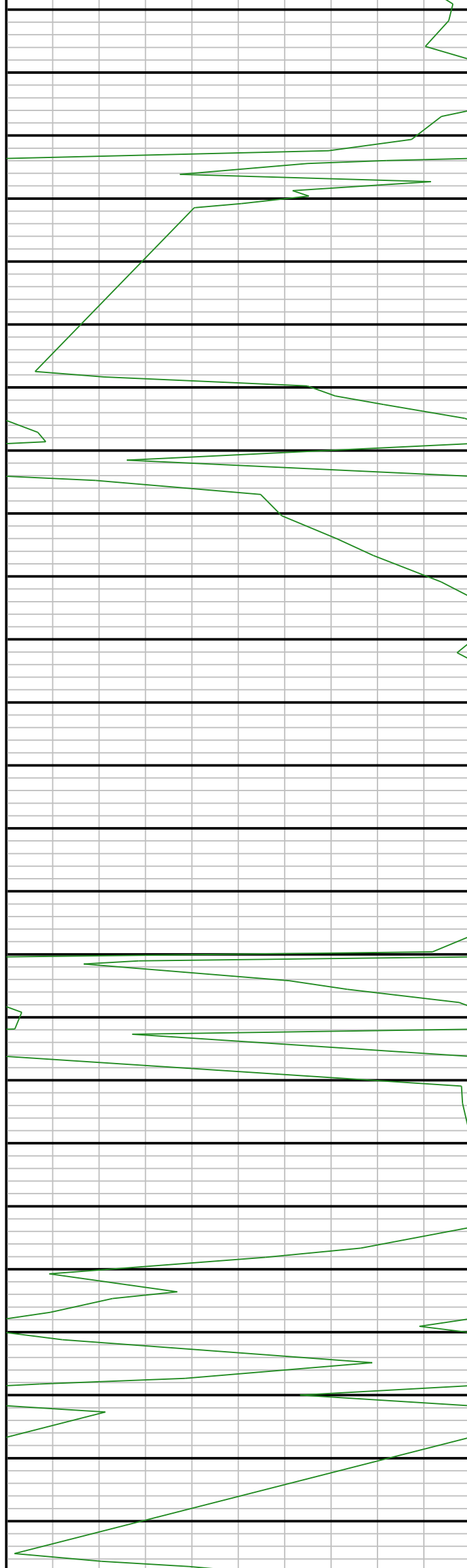
Index Scale: 1:240 Index Unit: Feet Index Type: MD Creation Date: February 08, 2018 11:14

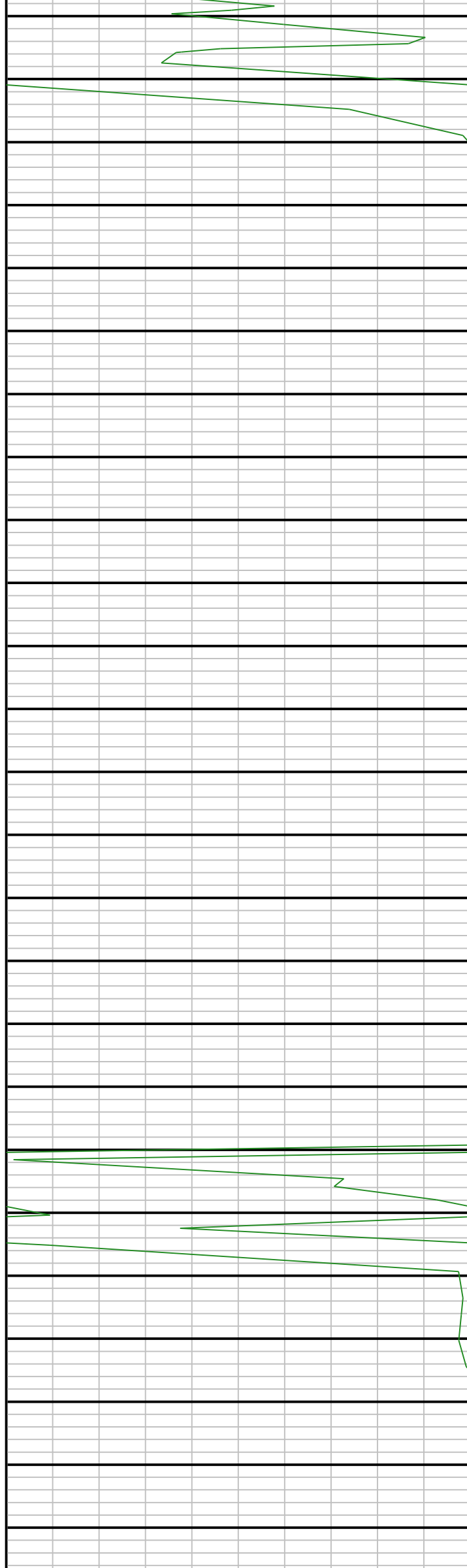




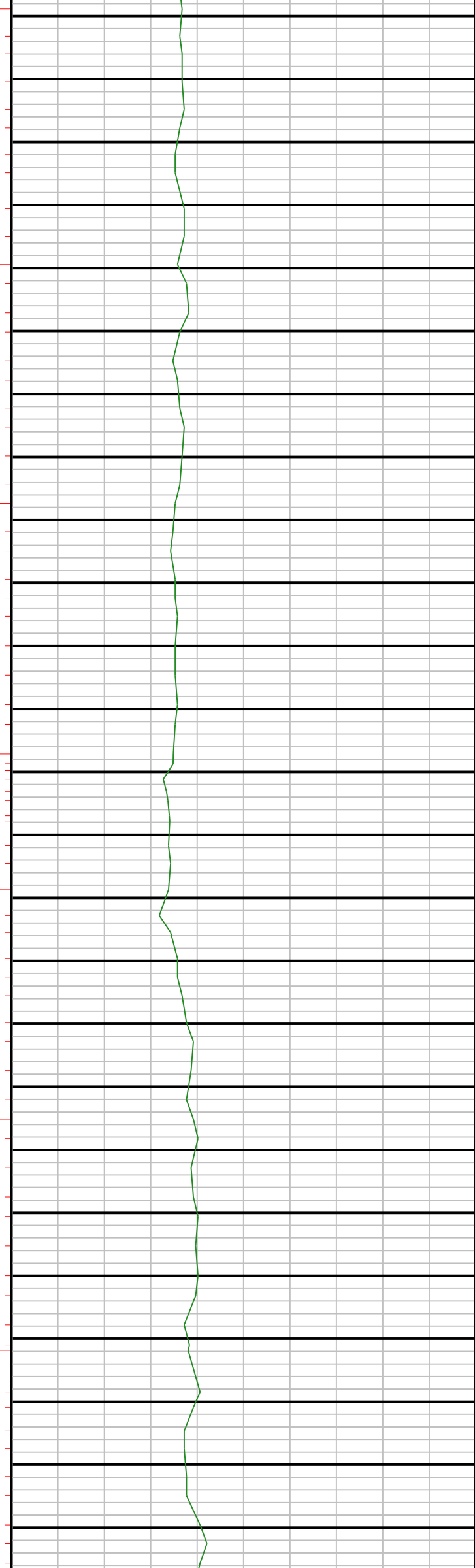


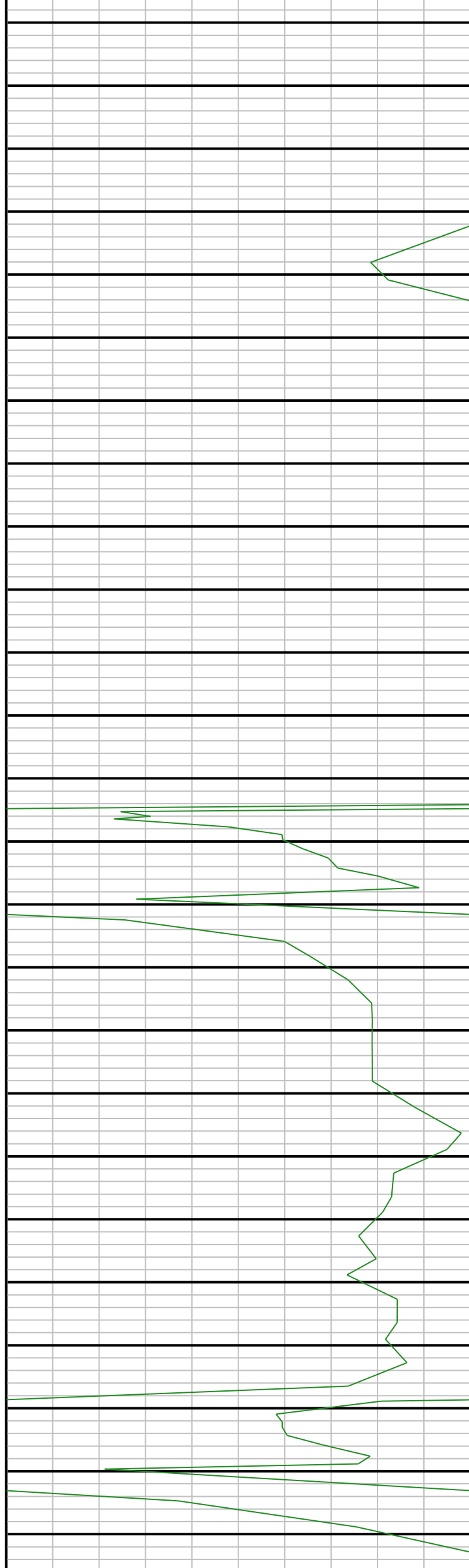




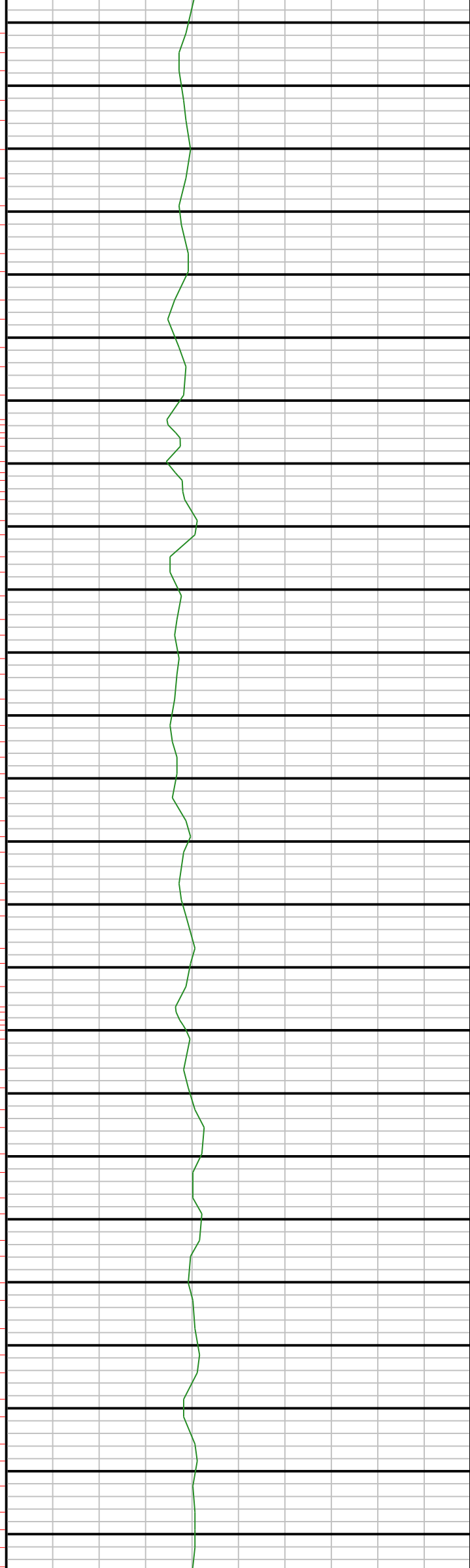


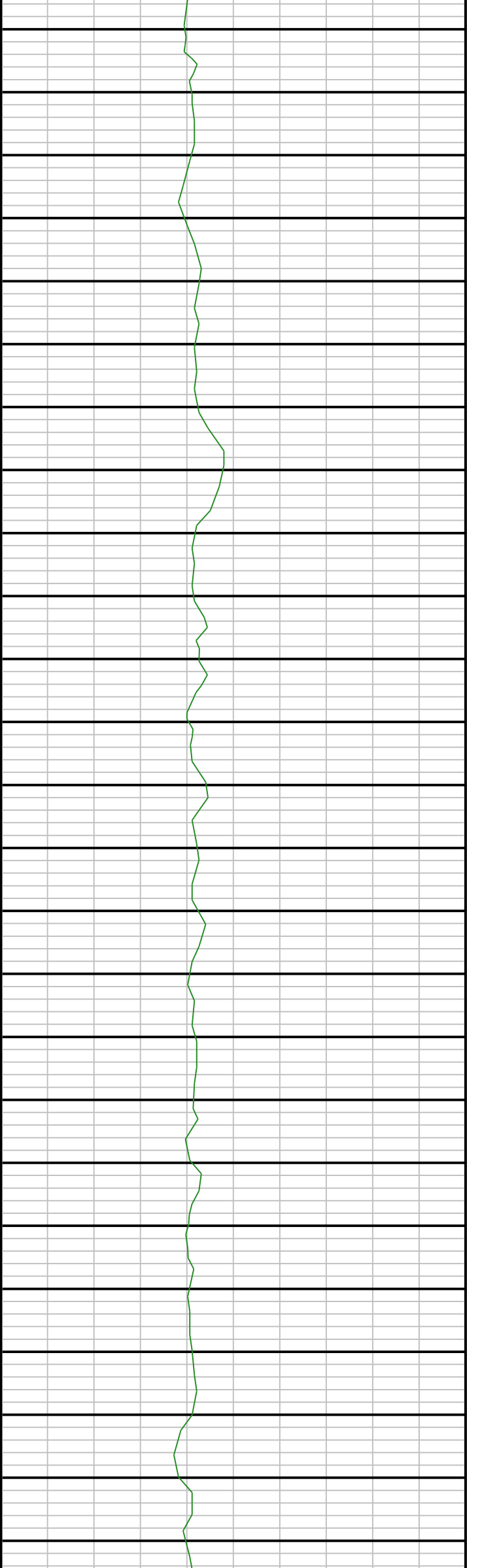
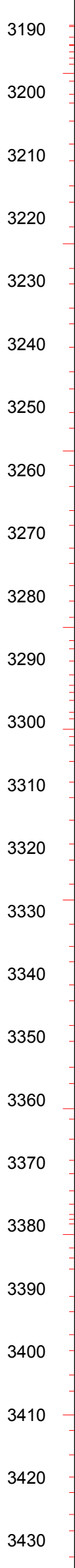
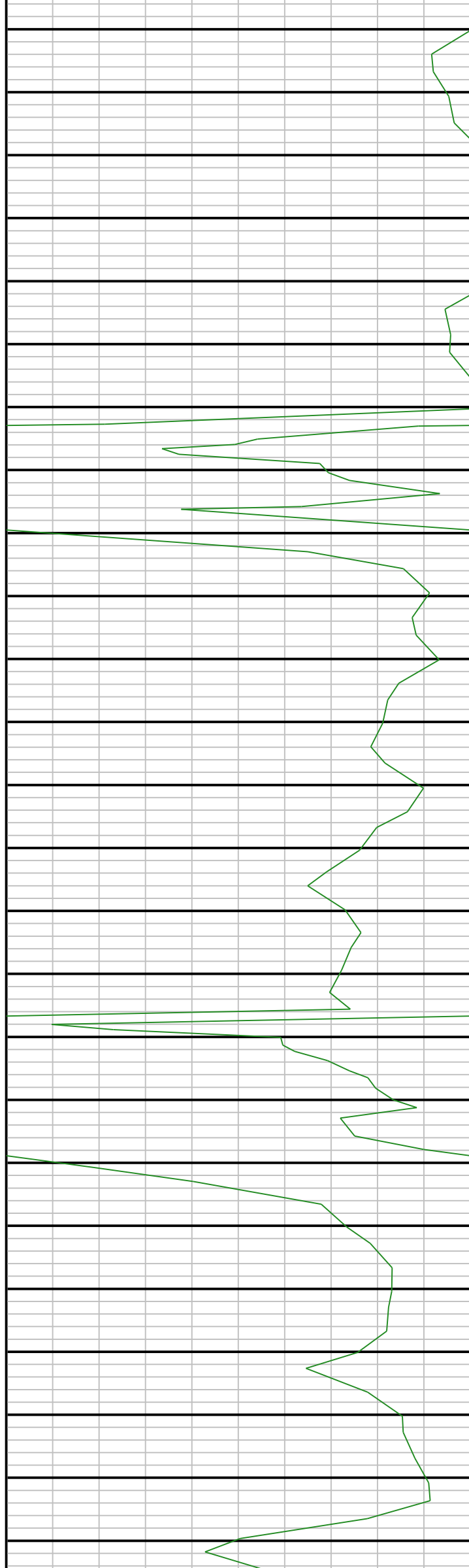
2690
2700
2710
2720
2730
2740
2750
2760
2770
2780
2790
2800
2810
2820
2830
2840
2850
2860
2870
2880
2890
2900
2910
2920
2930

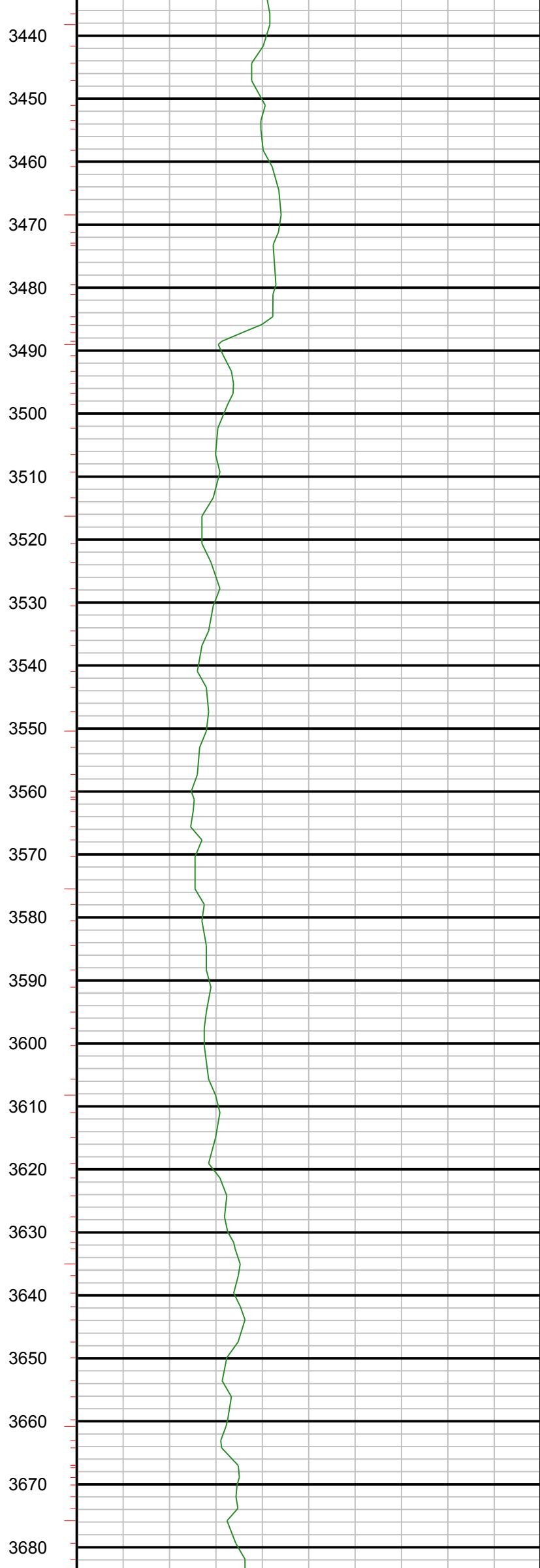
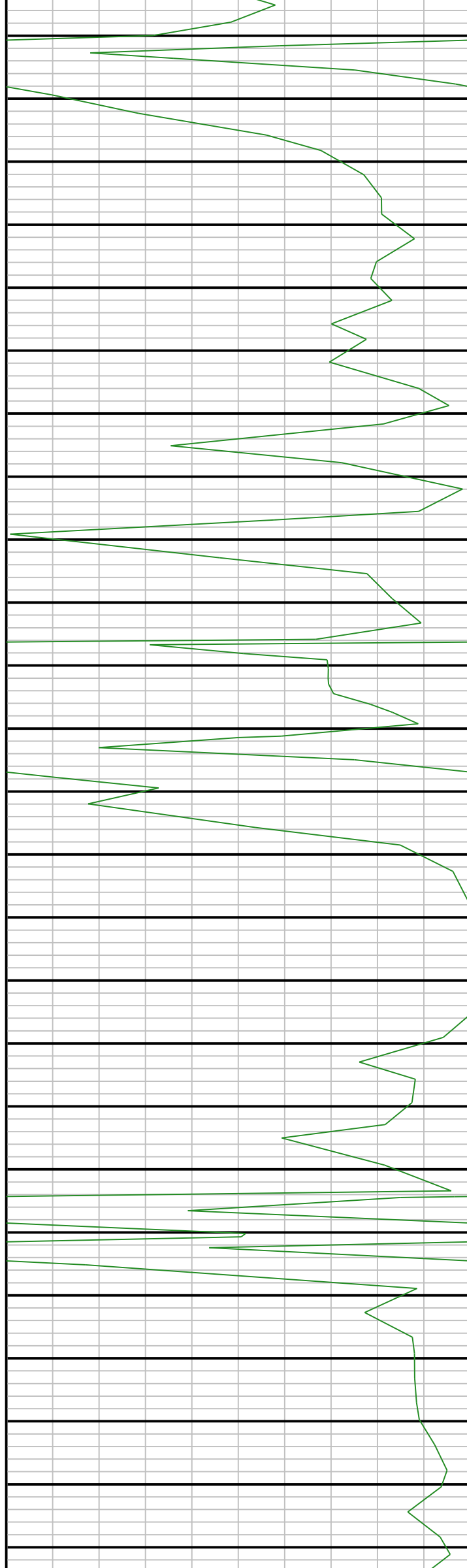


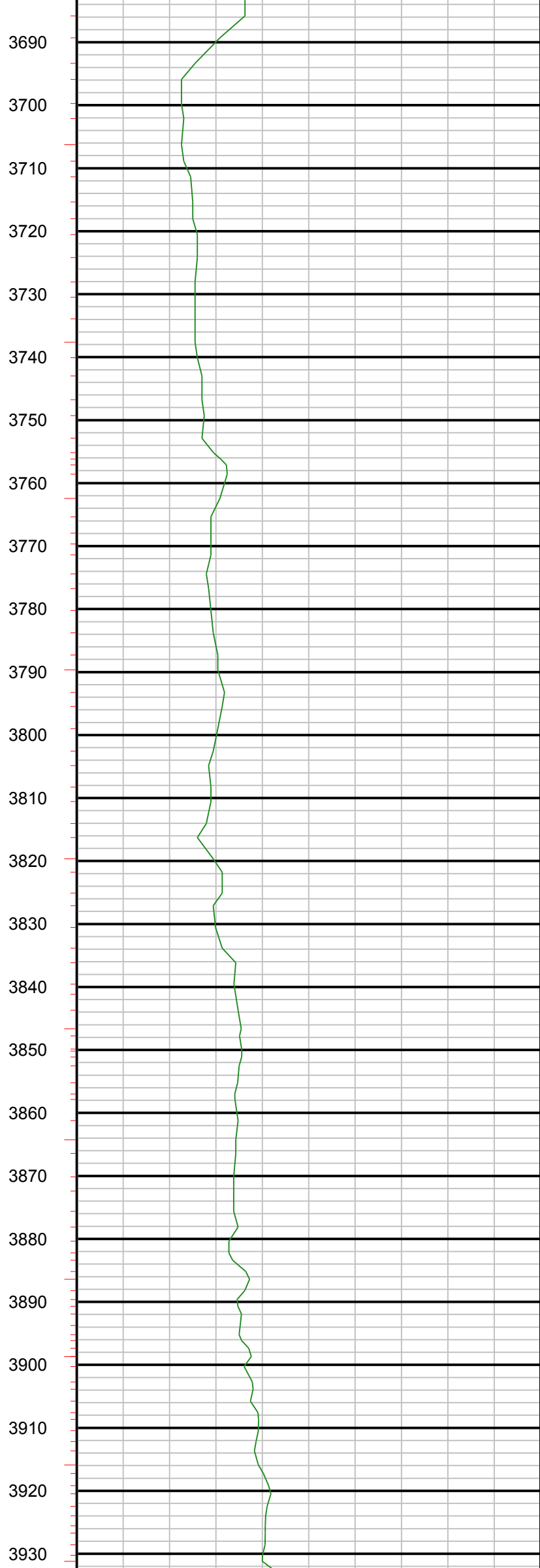
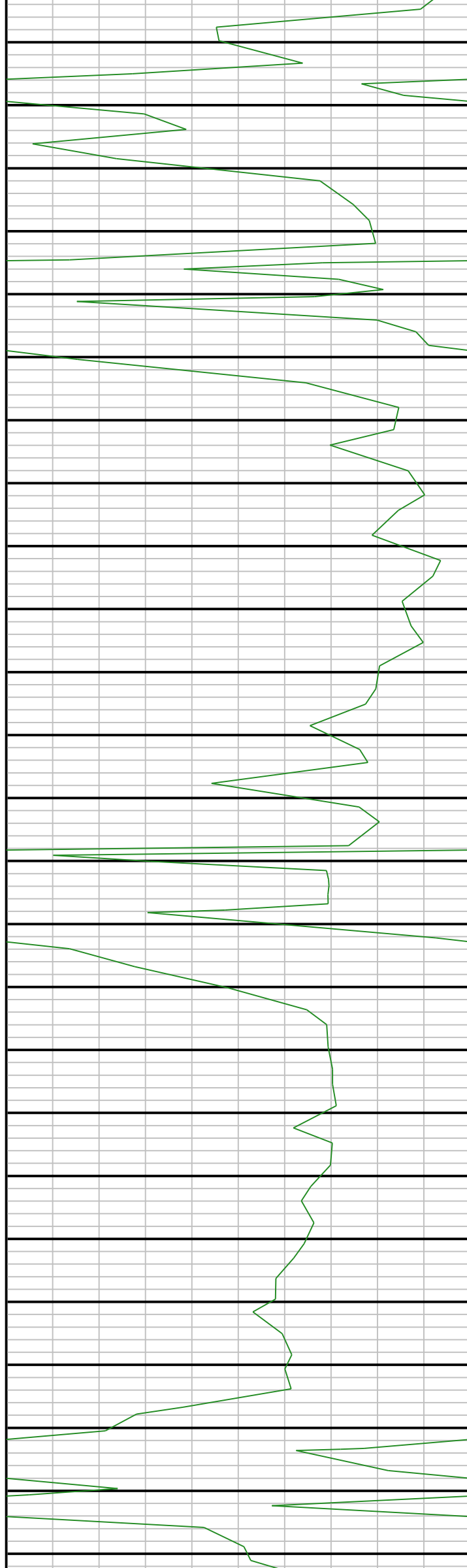


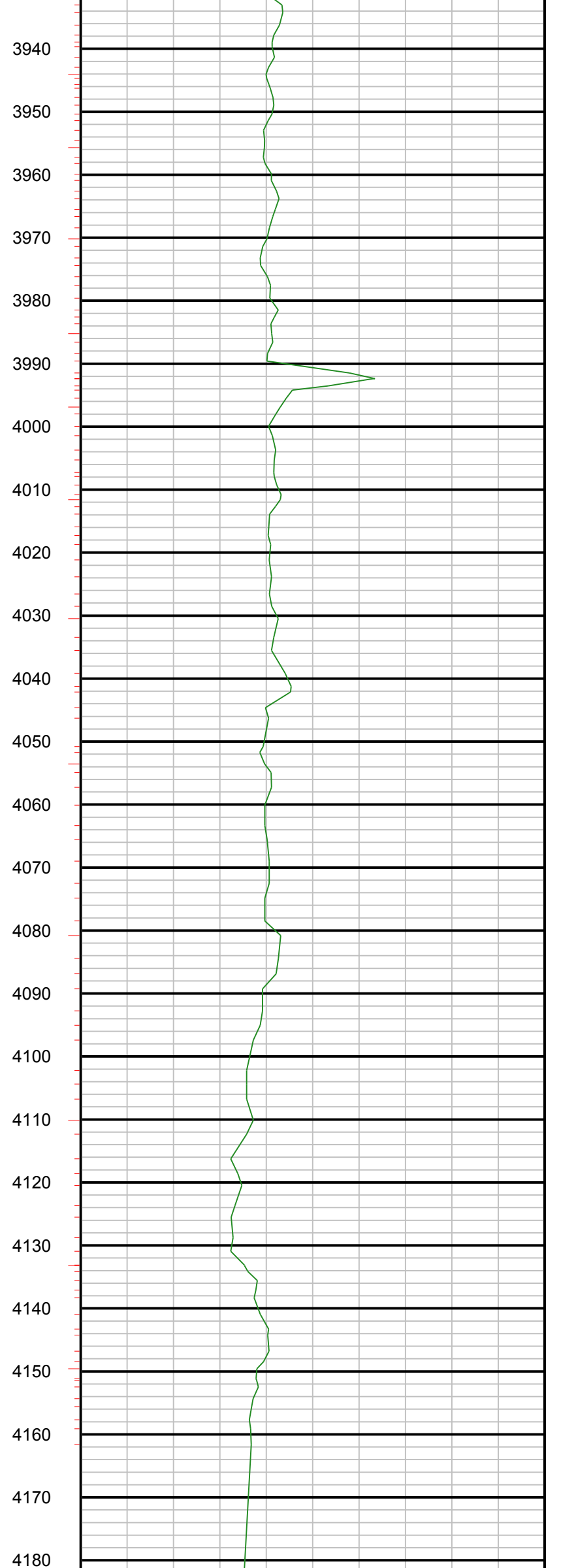
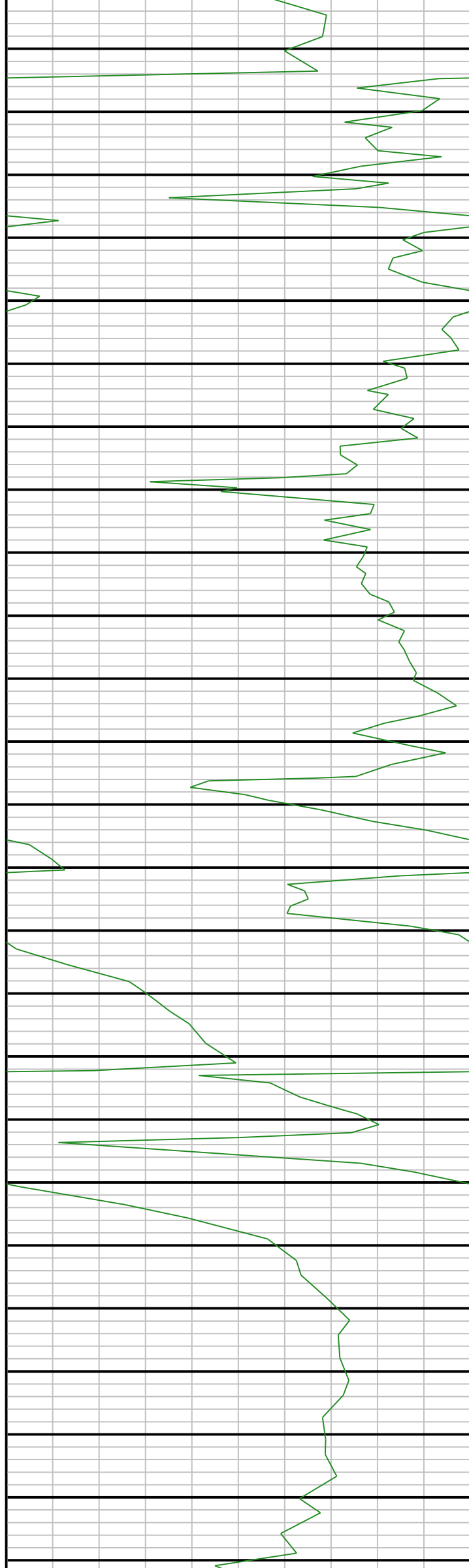
2940
2950
2960
2970
2980
2990
3000
3010
3020
3030
3040
3050
3060
3070
3080
3090
3100
3110
3120
3130
3140
3150
3160
3170
3180

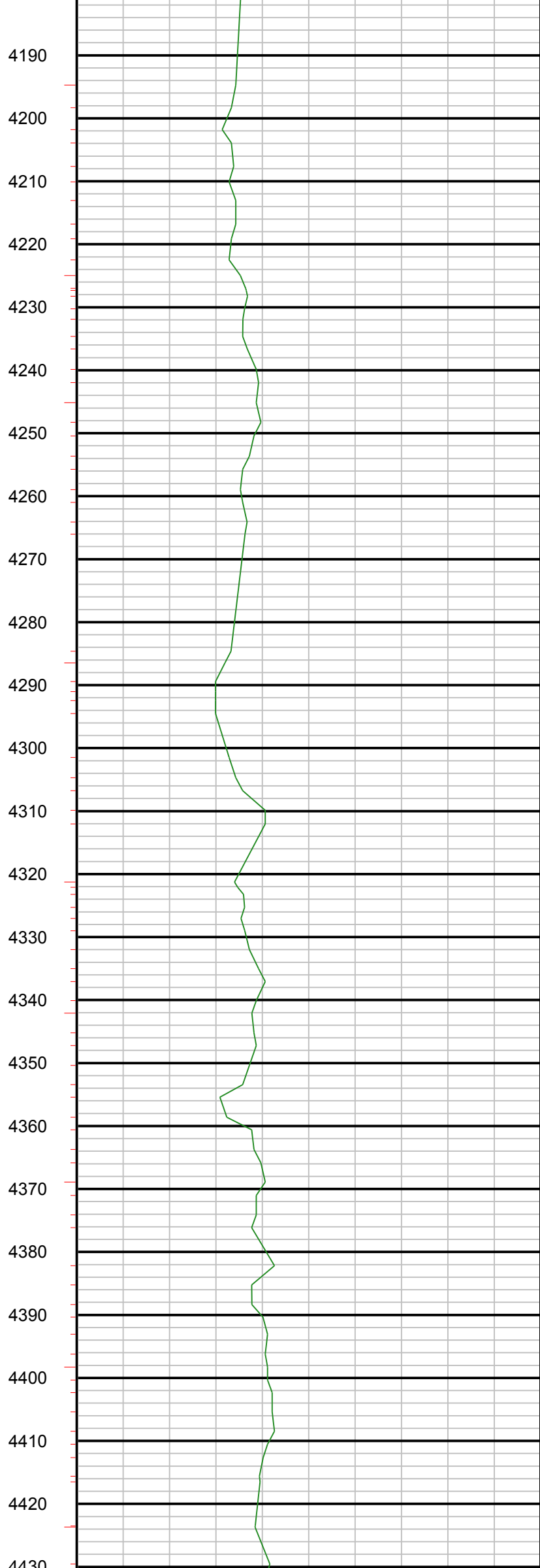


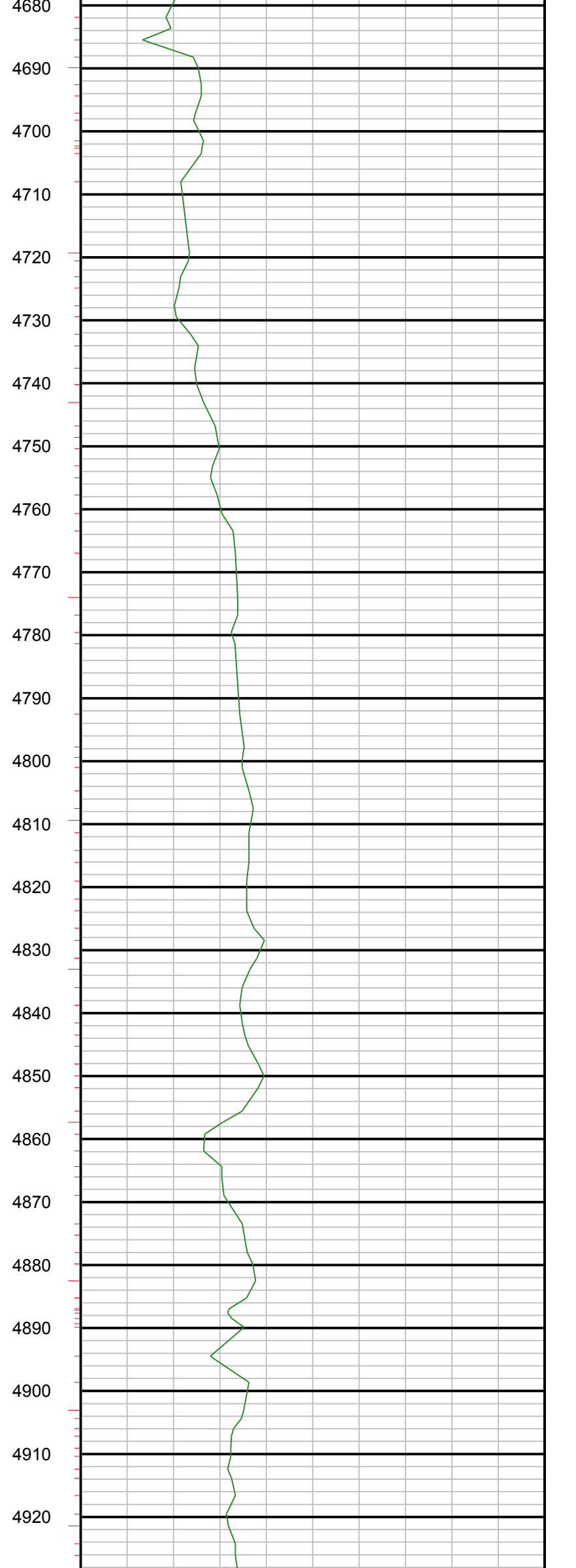
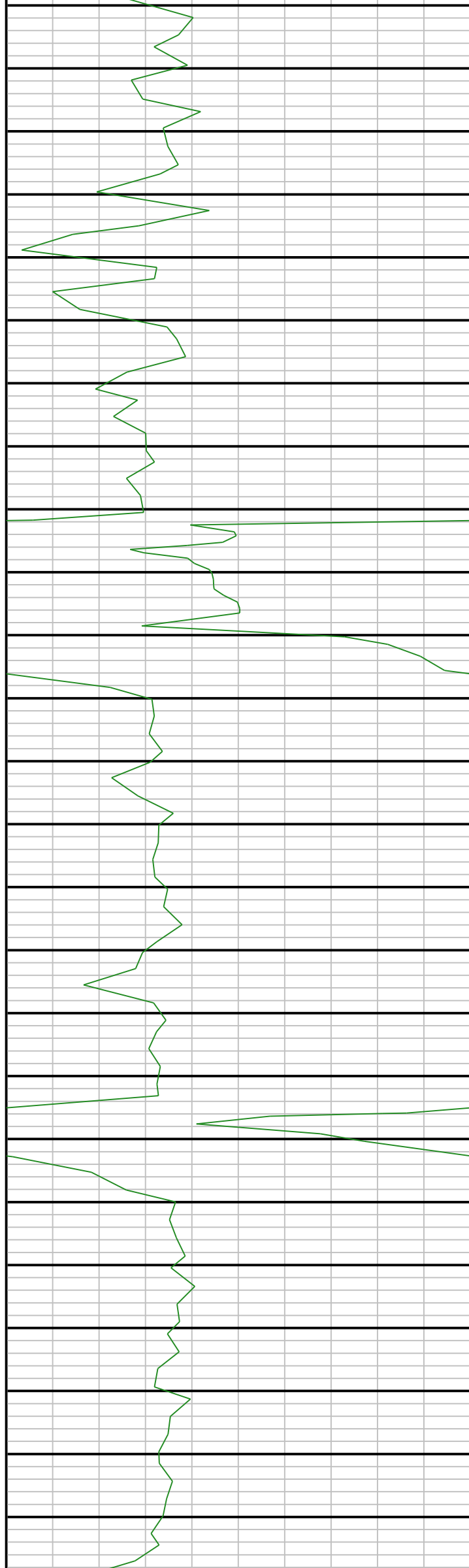


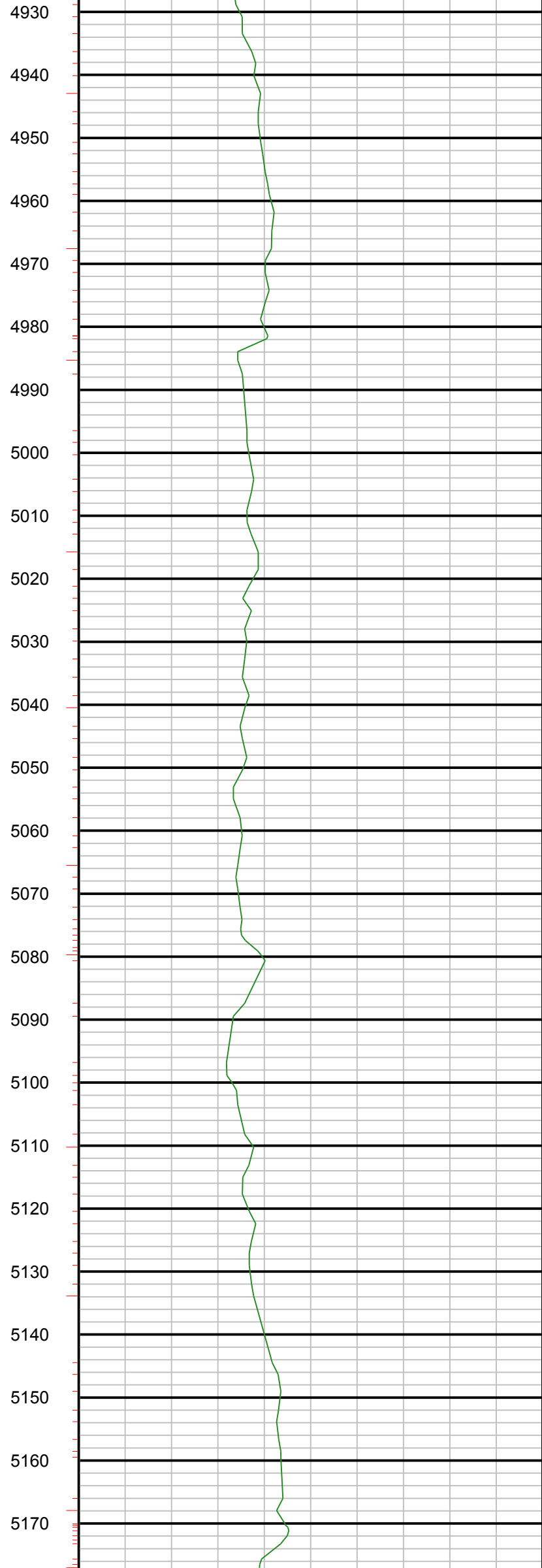
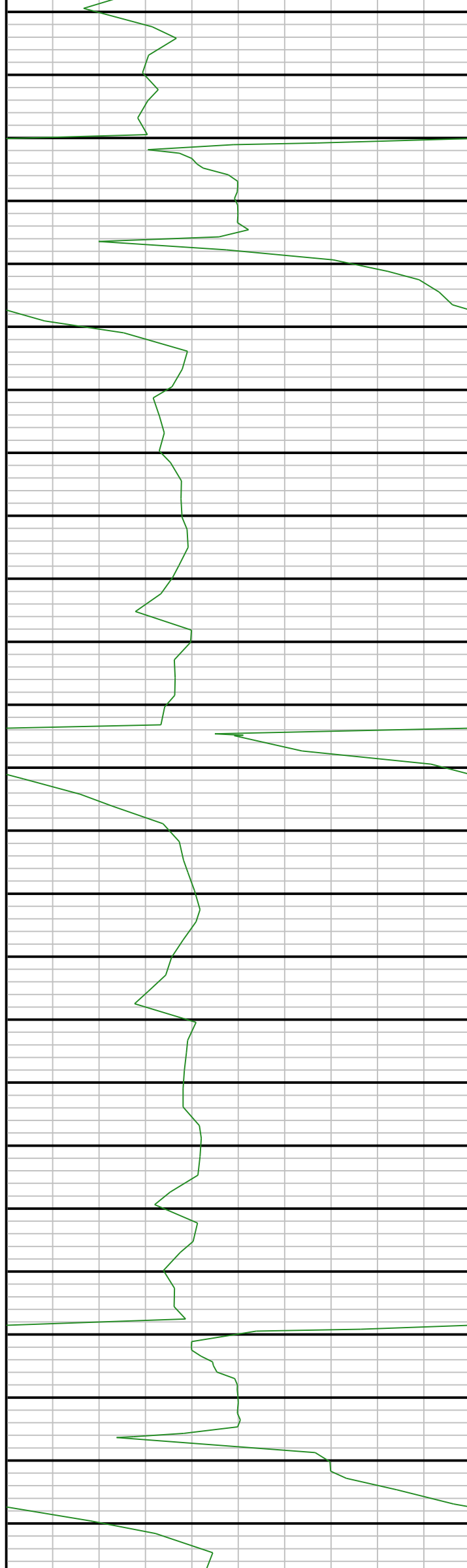


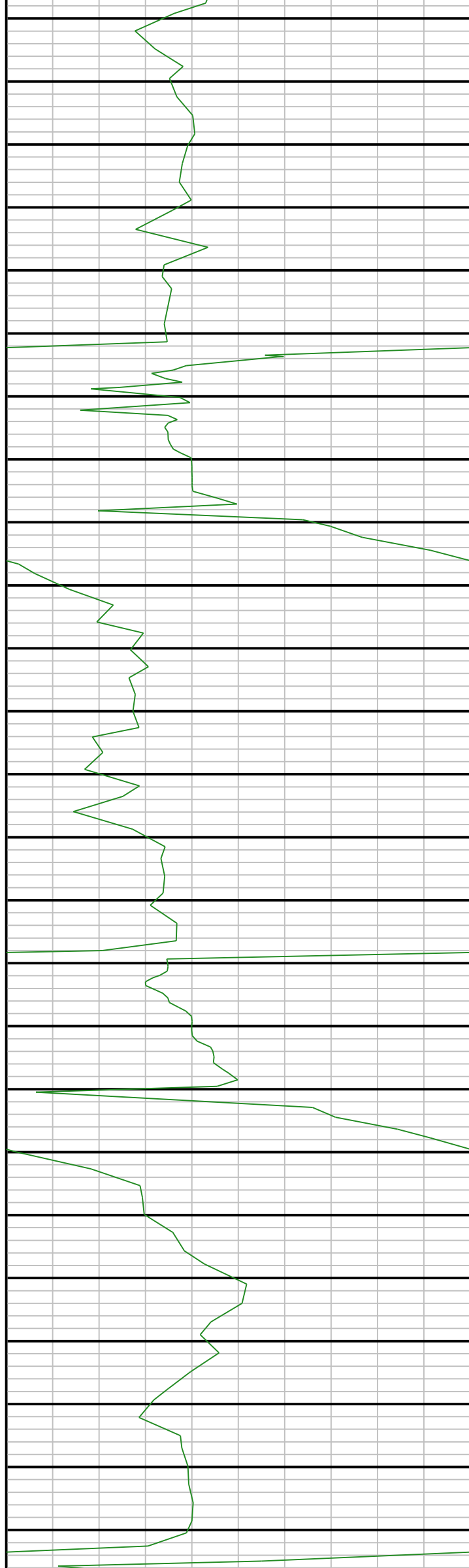




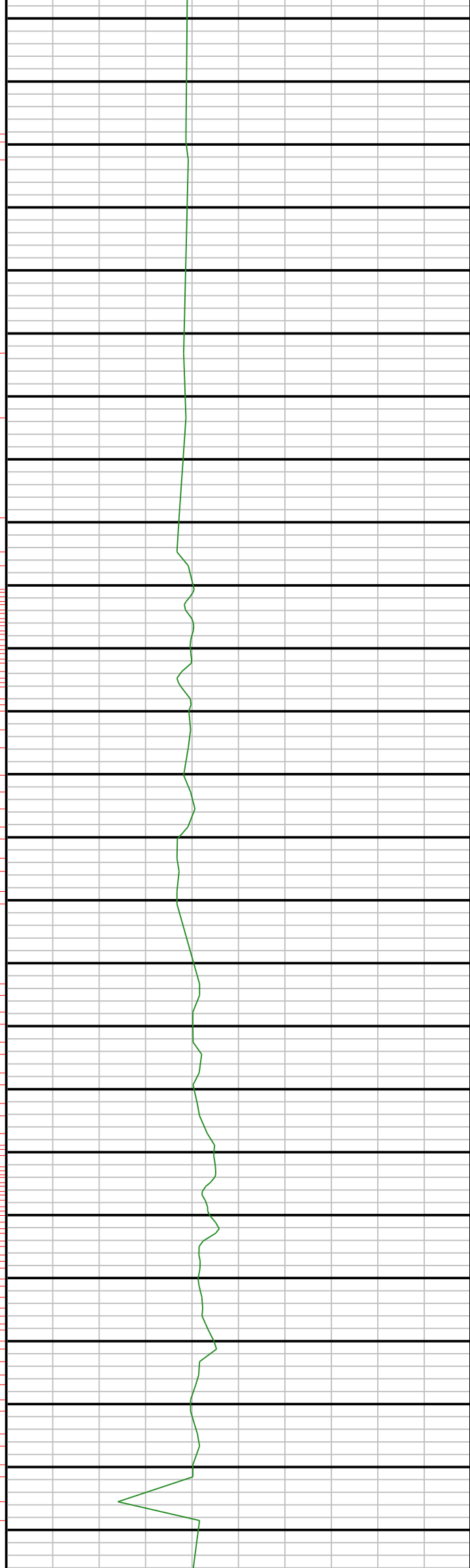


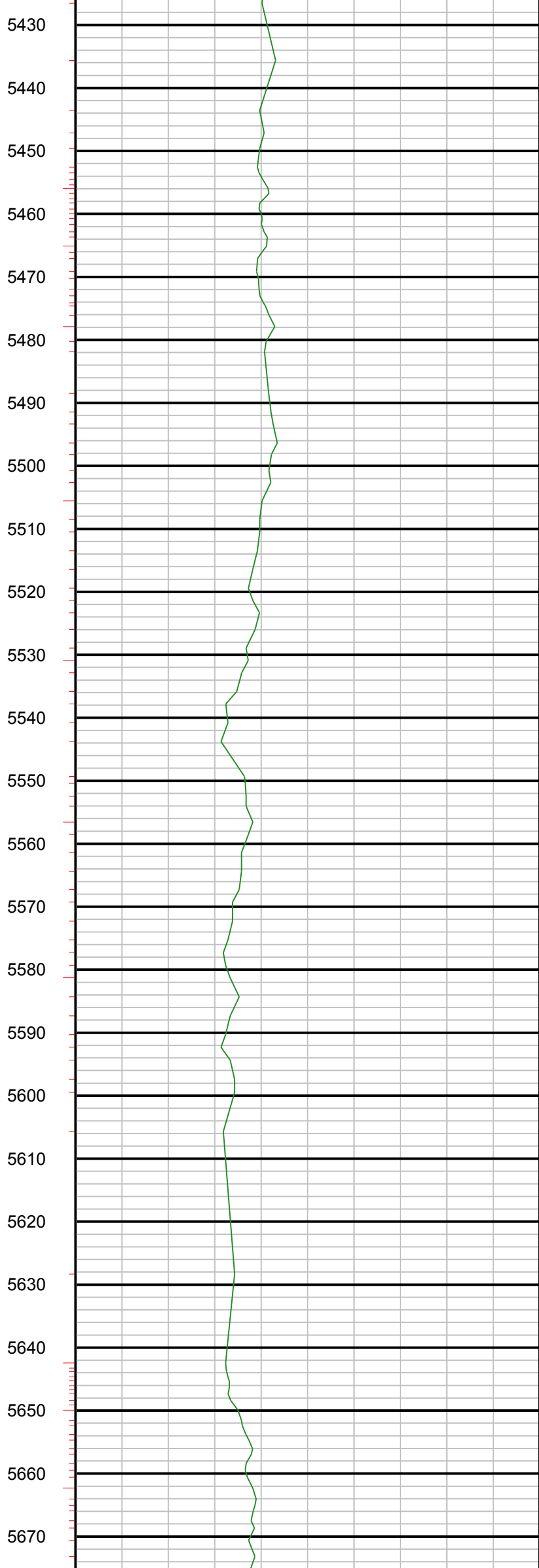


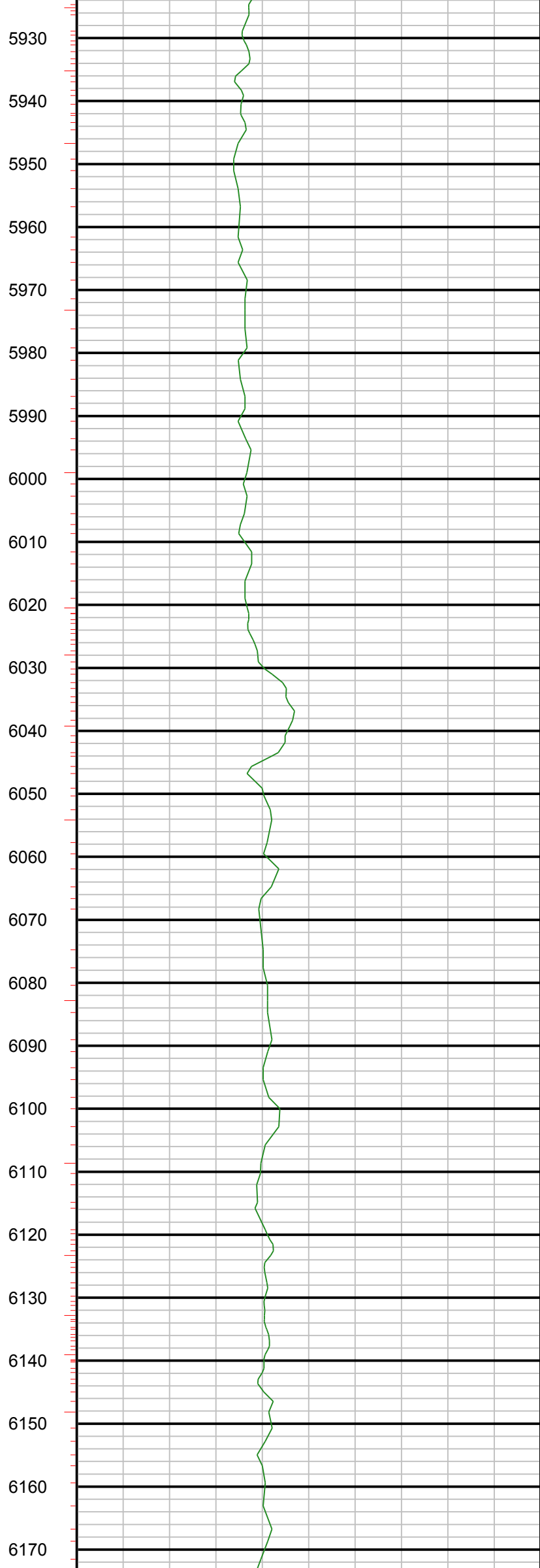
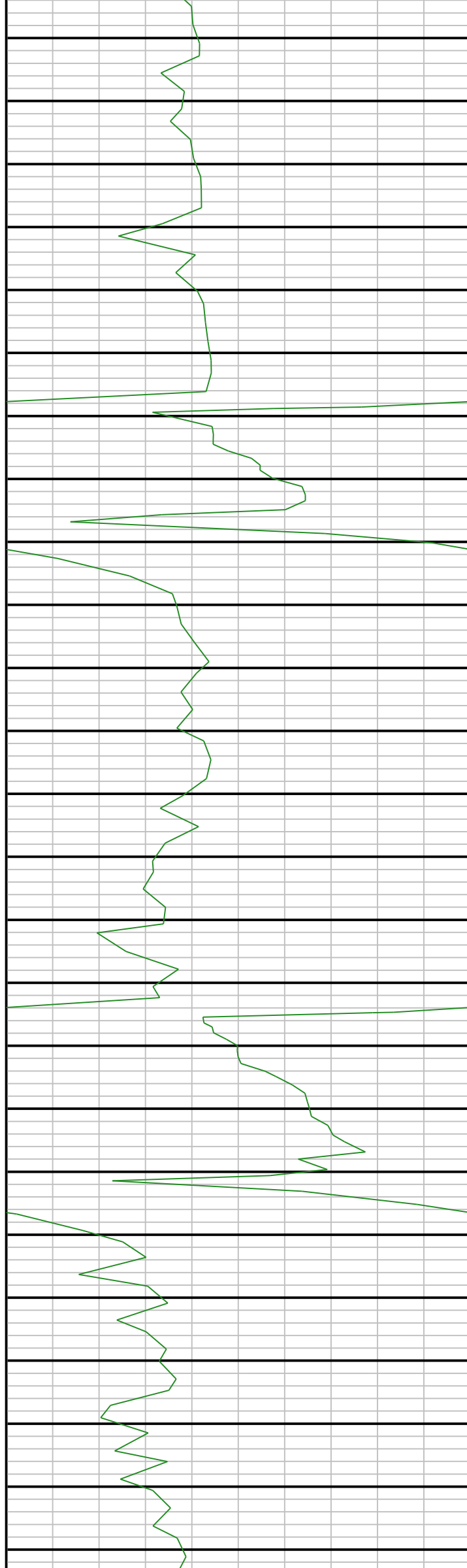


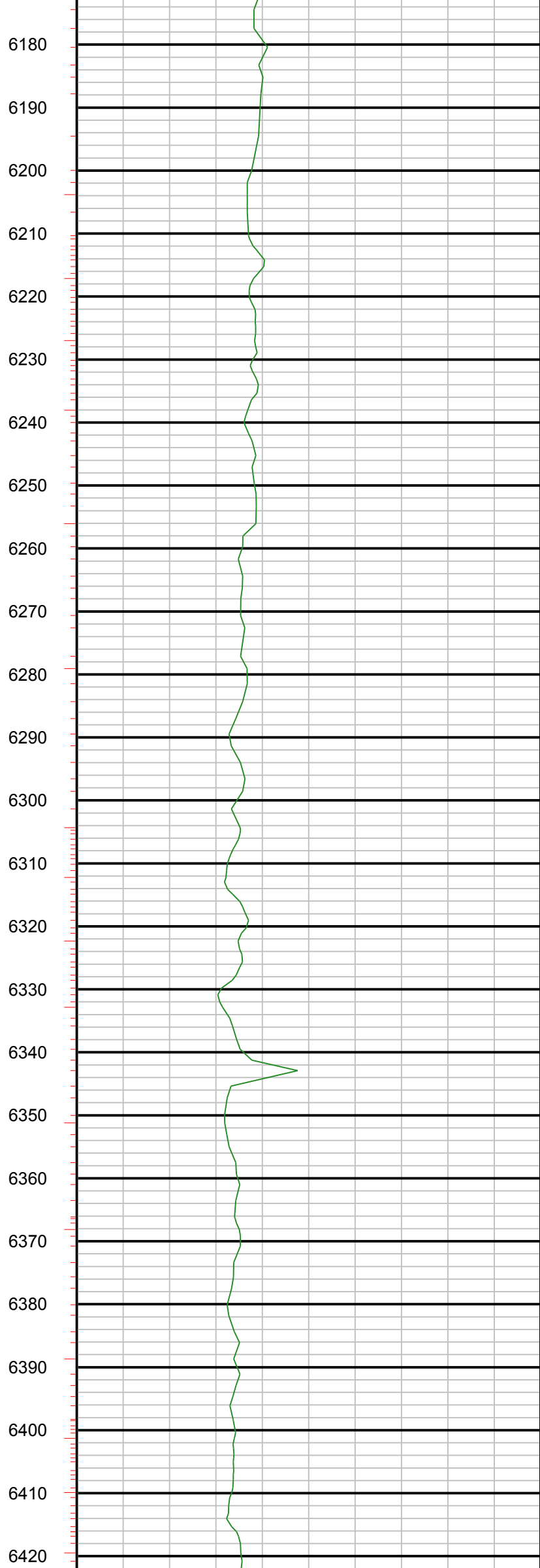
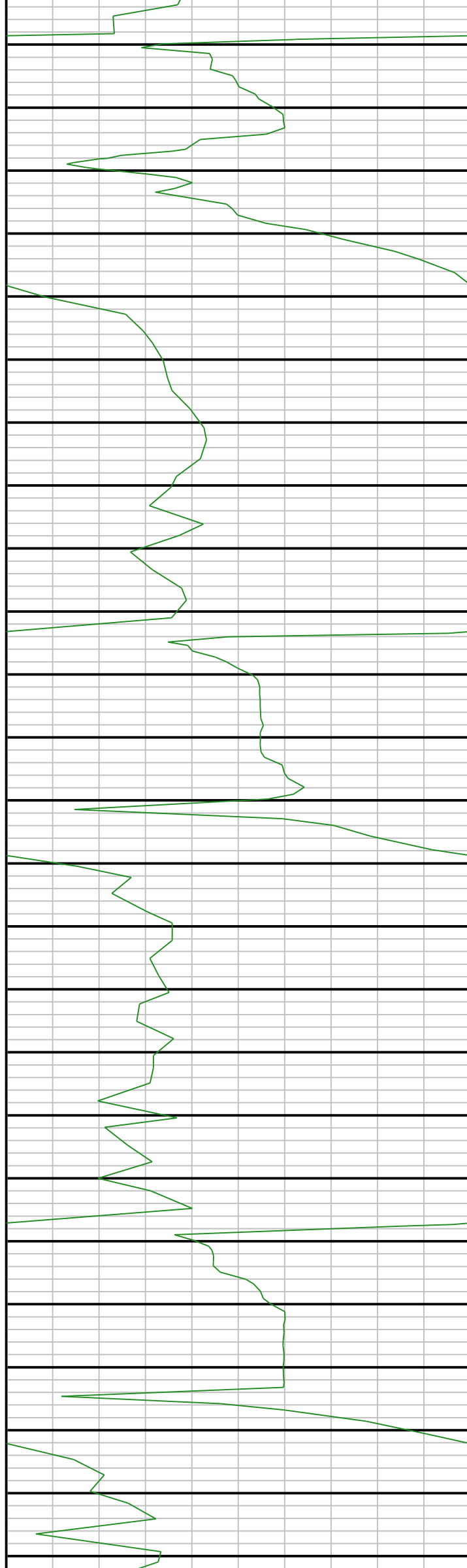


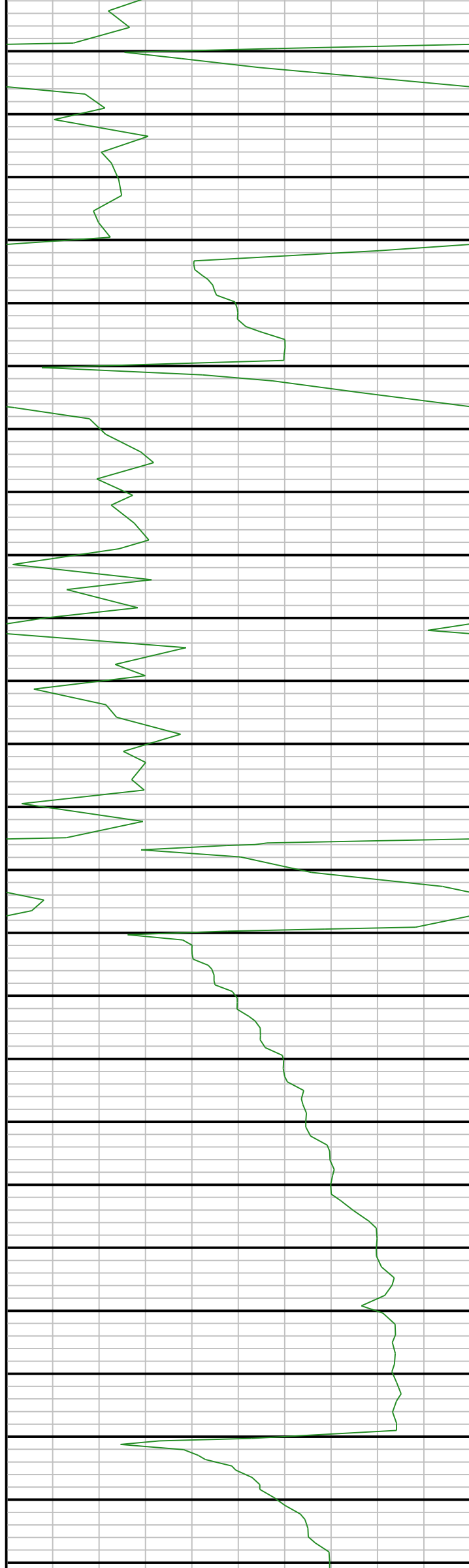
5180
5190
5200
5210
5220
5230
5240
5250
5260
5270
5280
5290
5300
5310
5320
5330
5340
5350
5360
5370
5380
5390
5400
5410
5420











6430

6440

6450

6460

6470

6480

6490

6500

6510

6520

6530

6540

6550

6560

6570

6580

6590

6600

6610

6620

6630

6640

6650

6660

6670

