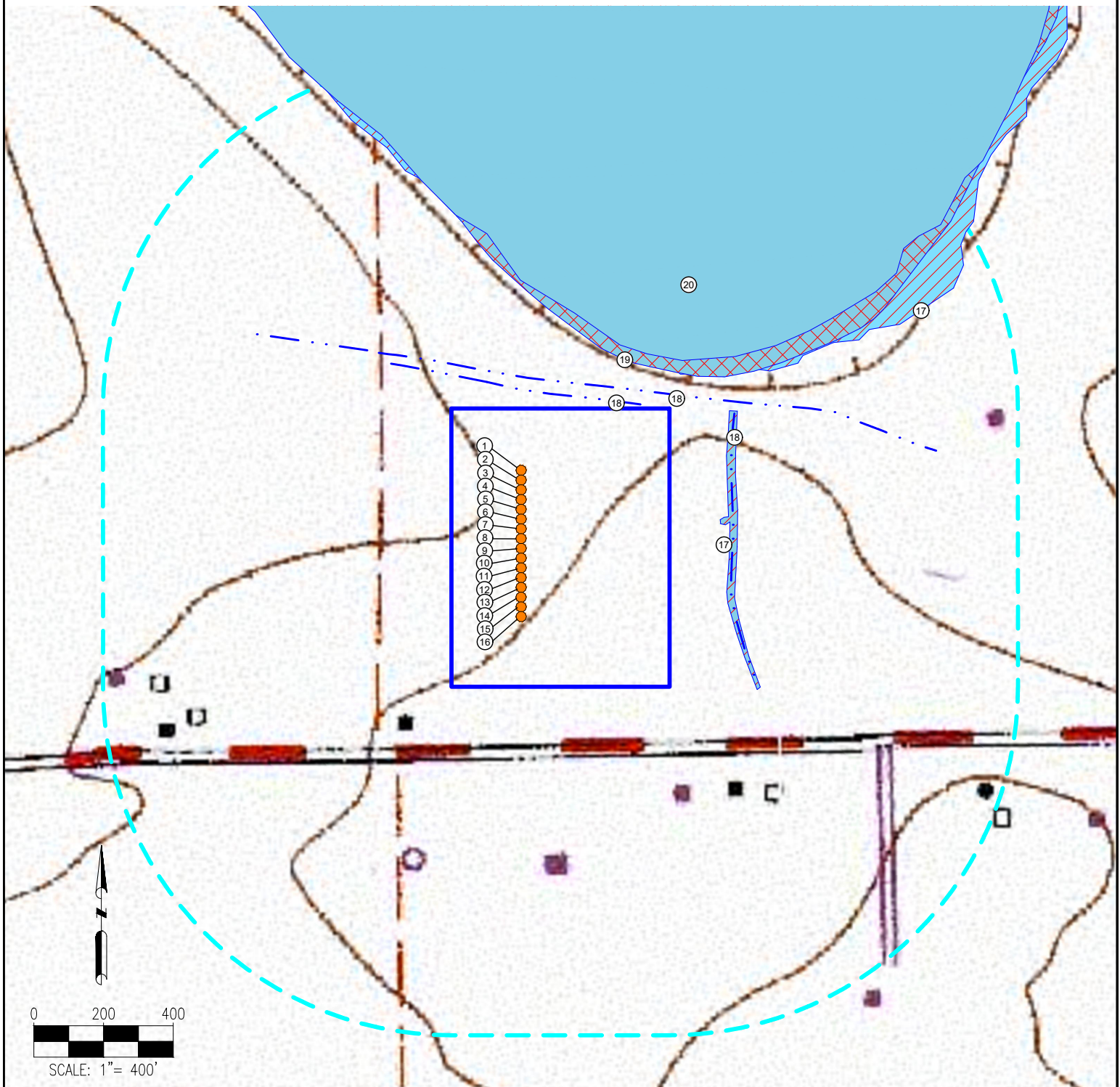


ENRIGHT 18-N PAD HYDROLOGY MAP



MEASUREMENTS ARE MADE FROM THE NEAREST EDGE OF THE DISTURBANCE AREA.

- | | | |
|---------------|-----------------|--|
| 1. ENRIGHT 1N | 7. ENRIGHT 7N | 13. ENRIGHT 13N |
| 2. ENRIGHT 2N | 8. ENRIGHT 8C | 14. ENRIGHT 14N |
| 3. ENRIGHT 3N | 9. ENRIGHT 9N | 15. ENRIGHT 15N |
| 4. ENRIGHT 4N | 10. ENRIGHT 10N | 16. ENRIGHT 16C |
| 5. ENRIGHT 5N | 11. ENRIGHT 11C | 17. WETLANDS ARE $\pm 146'$ E, AND $\pm 104'$ NE |
| 6. ENRIGHT 6N | 12. ENRIGHT 12N | 18. DITCHES ARE $\pm 12'$ N, $\pm 41'$ N, $\pm 176'$ E |

19. FLOODPLAIN IS $\pm 106'$ NE
20. POND IS $\pm 142'$ NE

NO FURTHER ACTION IS REQUIRED FOR WETLAND MITIGATION PER THE ARMY CORPS OF ENGINEERS.

LEGEND:

- | | | | | | |
|--|-----------------|--|------------|--|--------------------|
| | = PROPOSED WELL | | = POND | | = DISTURBANCE AREA |
| | = 1000' RADIUS | | = WETLANDS | | = FLOODPLAIN |
| | = DITCH | | | | |

DISCLAIMER:
THIS PLOT DOES NOT REPRESENT A MONUMENTED LAND SURVEY AND SHOULD NOT BE RELIED UPON TO DETERMINE BOUNDARY LINES, PROPERTY OWNERSHIP OR OTHER PROPERTY INTERESTS. PARCEL LINES, IF DEPICTED HAVE NOT BEEN FIELD VERIFIED AND MAY BE BASED UPON PUBLICLY AVAILABLE DATA THAT ALSO HAS NOT BEEN INDEPENDENTLY VERIFIED.

DATA SOURCE:
TOPO MAP: USGS
NHD: USGS

PUBLICLY AVAILABLE DATA SOURCES HAVE NOT BEEN INDEPENDENTLY VERIFIED BY PFS.



7535 Hilltop Circle
Denver, CO 80221
(303) 925-7128
www.ascentgeomatics.com

FIELD DATE:
08-04-14

DRAWING DATE:
01-30-18

BY:
CLP

CHECKED BY:
WDW

SITE NAME:
ENRIGHT 18-N PAD

SURFACE LOCATION:
SW 1/4 SE 1/4 SEC. 18, T4N, R68W, 6TH P.M.
WELD COUNTY, COLORADO

PREPARED FOR:

