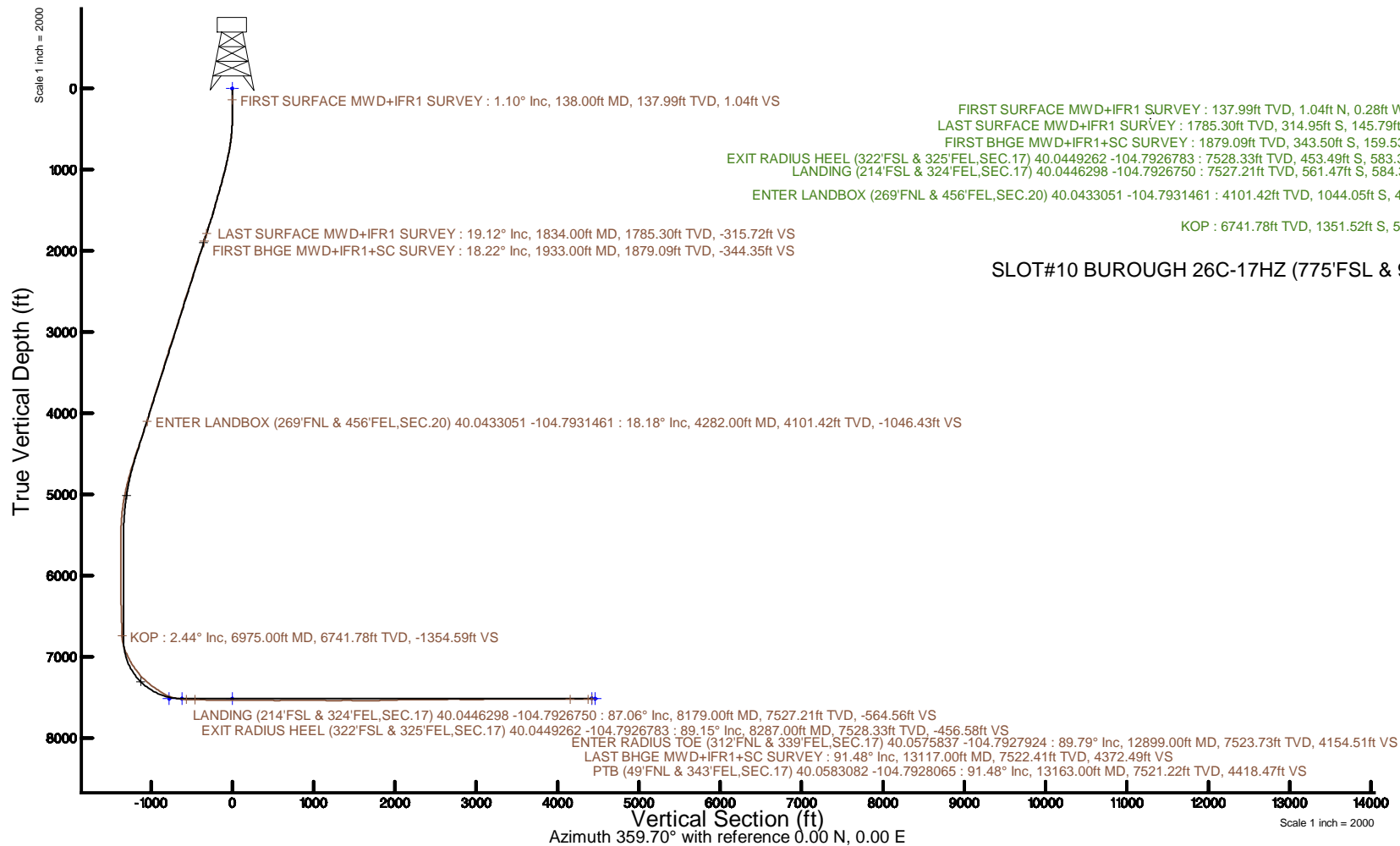


| | | | |
|---|------------------------------|---|--|
| Location: | COLORADO | Slot: | SL0710 BUROUGH 26C-17HZ (775FSL & 908FEL, SEC. 17) |
| Field: | WELD COUNTY (UTM/TRUE NORTH) | Well: | BURROUGH 26C-17HZ |
| Facility: | SEC.17-T1N-R66W | Wellbore: | BURROUGH 26C-17HZ PWB |
| Plot reference wellpath is BUROUGH 26C-17HZ PWP Rev-A.0 | | Grid System: NAD83 / UTM Zone 13 North, US feet | |
| True vertical depths are referenced to PD 564 (26) (RT) | | * = Wellpath was transformed from a different geoidic datum | |
| Measured depths are referenced to PD 564 (26) (RT) | | North Reference: True north | |
| PD 564 (26) (RT) to Mean Sea Level: 5005 feet | | Scale: True distance | |
| Mean Sea Level to Mud line (At Slot: SL0710 BUROUGH 26C-17HZ (775FSL & 908FEL, SEC.17)): 0 feet | | Depths are in feet | |
| Coordinates are in feet referenced to Slot | | Created by: painseir on 2017-11-16 | |
| | | Database: WA_DEN_Anadarko_Defn | |



REFERENCE WELLPATH IDENTIFICATION

| | | | |
|----------|--------------------------------------|----------|---|
| Operator | KERR-MCGEE OIL & GAS ONSHORE LP (WA) | Slot | SLOT#10 BUROUGH 26C-17HZ (775'FSL & 908'FEL,SEC.17) |
| Area | COLORADO | Well | BUROUGH 26C-17HZ |
| Field | WELD COUNTY (UTM/TRUE NORTH) | Wellbore | BUROUGH 26C-17HZ AWB |
| Facility | SEC.17-T1N-R66W | | |

REPORT SETUP INFORMATION

| | | | |
|---------------------|------------------------------------|----------------------|---|
| Projection System | NAD83 / UTM Zone 13 North, US feet | Software System | WellArchitect® 5.0 |
| North Reference | True | User | Painsetr |
| Scale | 0.999604 | Report Generated | 11/16/2017 at 9:15 AM |
| Convergence at slot | 0.14° East | Database/Source file | WA_DEN_Anadarko_Defn/BUROUGH_26C-17HZ_AWP.xml |

WELLPATH LOCATION

| | Local coordinates | | Grid coordinates | | Geographic coordinates | |
|-----------------------|-------------------|----------|------------------|-----------------|------------------------|-----------------|
| | North[ft] | East[ft] | Easting[US ft] | Northing[US ft] | Latitude | Longitude |
| Slot Location | -8437.77 | -399.98 | 1697855.07 | 14543612.50 | 40°02'46.216"N | 104°47'41.143"W |
| Facility Reference Pt | | | 1698235.31 | 14552047.82 | 40°04'09.600"N | 104°47'36.000"W |
| Field Reference Pt | | | 1698235.31 | 14552047.82 | 40°04'09.600"N | 104°47'36.000"W |

WELLPATH DATUM

| | | | |
|--------------------------|-------------------|---|-------------------|
| Calculation method | Minimum curvature | PD 564 (26') (RT) to Facility Vertical Datum | 5005.00ft |
| Horizontal Reference Pt | Slot | PD 564 (26') (RT) to Mean Sea Level | 5005.00ft |
| Vertical Reference Pt | PD 564 (26') (RT) | PD 564 (26') (RT) to Mud Line at Slot (SLOT#10 BUROUGH 26C-17HZ (775'FSL & 908'FEL,SEC.17)) | 5005.00ft |
| MD Reference Pt | PD 564 (26') (RT) | Section Origin | N 0.00, E 0.00 ft |
| Field Vertical Reference | Mean Sea Level | Section Azimuth | 359.70° |

| REFERENCE WELLPATH IDENTIFICATION | | | |
|-----------------------------------|--------------------------------------|----------|---|
| Operator | KERR-MCGEE OIL & GAS ONSHORE LP (WA) | Slot | SLOT#10 BUROUGH 26C-17HZ (775'FSL & 908'FEL,SEC.17) |
| Area | COLORADO | Well | BUROUGH 26C-17HZ |
| Field | WELD COUNTY (UTM/TRUE NORTH) | Wellbore | BUROUGH 26C-17HZ AWP |
| Facility | SEC.17-T1N-R66W | | |

| WELLPATH DATA (188 stations) † = interpolated/extrapolated station | | | | | | | | | | | | |
|--|--------------------|----------------|-------------|-------------------|---------------|--------------|----------------------|-----------------------|----------------|-----------------|------------------|-------------------------------|
| MD (ft) | Inclination (°) | Azimuth (°) | TVD (ft) | Vert Sect (ft) | North (ft) | East (ft) | Grid East (US ft) | Grid North (US ft) | Latitude | Longitude | DLS (°/100ft) | Comments |
| 0.00† | 0.000 | 344.690 | 0.00 | 0.00 | 0.00 | 0.00 | 1697855.07 | 14543612.50 | 40°02'46.216"N | 104°47'41.143"W | 0.00 | |
| 26.00 | 0.000 | 344.690 | 26.00 | 0.00 | 0.00 | 0.00 | 1697855.07 | 14543612.50 | 40°02'46.216"N | 104°47'41.143"W | 0.00 | |
| 138.00 | 1.100 | 344.690 | 137.99 | 1.04 | 1.04 | -0.28 | 1697854.78 | 14543613.54 | 40°02'46.226"N | 104°47'41.147"W | 0.98 | FIRST SURFACE MWD+IFR1 SURVEY |
| 170.00 | 0.750 | 359.550 | 169.99 | 1.54 | 1.54 | -0.37 | 1697854.70 | 14543614.04 | 40°02'46.231"N | 104°47'41.148"W | 1.32 | |
| 202.00 | 0.440 | 18.710 | 201.99 | 1.87 | 1.87 | -0.33 | 1697854.74 | 14543614.37 | 40°02'46.234"N | 104°47'41.147"W | 1.14 | |
| 233.00 | 0.660 | 34.700 | 232.99 | 2.13 | 2.13 | -0.19 | 1697854.88 | 14543614.63 | 40°02'46.237"N | 104°47'41.145"W | 0.86 | |
| 265.00 | 0.440 | 60.450 | 264.98 | 2.34 | 2.34 | 0.02 | 1697855.09 | 14543614.84 | 40°02'46.239"N | 104°47'41.143"W | 1.02 | |
| 296.00 | 0.440 | 123.820 | 295.98 | 2.33 | 2.33 | 0.23 | 1697855.29 | 14543614.83 | 40°02'46.239"N | 104°47'41.140"W | 1.49 | |
| 327.00 | 0.920 | 144.740 | 326.98 | 2.06 | 2.06 | 0.47 | 1697855.53 | 14543614.56 | 40°02'46.236"N | 104°47'41.137"W | 1.72 | |
| 359.00 | 1.010 | 148.960 | 358.98 | 1.61 | 1.61 | 0.76 | 1697855.83 | 14543614.11 | 40°02'46.232"N | 104°47'41.133"W | 0.36 | |
| 390.00 | 1.980 | 141.230 | 389.97 | 0.95 | 0.96 | 1.24 | 1697856.30 | 14543613.46 | 40°02'46.225"N | 104°47'41.127"W | 3.19 | |
| 422.00 | 2.370 | 148.520 | 421.94 | -0.05 | -0.04 | 1.93 | 1697857.00 | 14543612.47 | 40°02'46.216"N | 104°47'41.118"W | 1.49 | |
| 454.00 | 2.900 | 153.180 | 453.91 | -1.34 | -1.32 | 2.64 | 1697857.71 | 14543611.18 | 40°02'46.203"N | 104°47'41.109"W | 1.79 | |
| 485.00 | 3.380 | 155.990 | 484.86 | -2.87 | -2.86 | 3.37 | 1697858.44 | 14543609.65 | 40°02'46.188"N | 104°47'41.100"W | 1.63 | |
| 517.00 | 4.610 | 157.400 | 516.78 | -4.93 | -4.91 | 4.24 | 1697859.32 | 14543607.61 | 40°02'46.168"N | 104°47'41.088"W | 3.86 | |
| 548.00 | 6.280 | 159.770 | 547.64 | -7.67 | -7.65 | 5.31 | 1697860.39 | 14543604.87 | 40°02'46.140"N | 104°47'41.075"W | 5.43 | |
| 580.00 | 6.680 | 159.770 | 579.44 | -11.07 | -11.04 | 6.56 | 1697861.65 | 14543601.48 | 40°02'46.107"N | 104°47'41.059"W | 1.25 | |
| 613.00 | 7.250 | 161.090 | 612.19 | -14.85 | -14.81 | 7.90 | 1697863.00 | 14543597.72 | 40°02'46.070"N | 104°47'41.041"W | 1.79 | |
| 644.00 | 7.910 | 162.140 | 642.92 | -18.74 | -18.69 | 9.18 | 1697864.29 | 14543593.84 | 40°02'46.031"N | 104°47'41.025"W | 2.18 | |
| 676.00 | 8.390 | 161.620 | 674.60 | -23.05 | -23.00 | 10.60 | 1697865.71 | 14543589.53 | 40°02'45.989"N | 104°47'41.007"W | 1.52 | |
| 708.00 | 8.920 | 161.440 | 706.24 | -27.63 | -27.57 | 12.12 | 1697867.25 | 14543584.97 | 40°02'45.944"N | 104°47'40.987"W | 1.66 | |
| 740.00 | 10.110 | 162.230 | 737.80 | -32.67 | -32.59 | 13.77 | 1697868.91 | 14543579.95 | 40°02'45.894"N | 104°47'40.966"W | 3.74 | |
| 771.00 | 10.900 | 161.270 | 768.28 | -38.04 | -37.96 | 15.54 | 1697870.69 | 14543574.59 | 40°02'45.841"N | 104°47'40.943"W | 2.61 | |
| 803.00 | 11.820 | 160.560 | 799.65 | -44.01 | -43.92 | 17.60 | 1697872.77 | 14543568.64 | 40°02'45.782"N | 104°47'40.917"W | 2.91 | |
| 835.00 | 12.170 | 159.510 | 830.95 | -50.27 | -50.17 | 19.87 | 1697875.05 | 14543562.40 | 40°02'45.720"N | 104°47'40.887"W | 1.29 | |
| 867.00 | 12.700 | 158.540 | 862.20 | -56.72 | -56.60 | 22.34 | 1697877.53 | 14543555.97 | 40°02'45.657"N | 104°47'40.856"W | 1.78 | |
| 898.00 | 13.400 | 158.100 | 892.40 | -63.23 | -63.10 | 24.93 | 1697880.13 | 14543549.48 | 40°02'45.592"N | 104°47'40.822"W | 2.28 | |
| 930.00 | 14.110 | 156.520 | 923.48 | -70.27 | -70.12 | 27.87 | 1697883.09 | 14543542.47 | 40°02'45.523"N | 104°47'40.785"W | 2.51 | |
| 962.00 | 15.030 | 156.870 | 954.45 | -77.68 | -77.51 | 31.05 | 1697886.29 | 14543535.09 | 40°02'45.450"N | 104°47'40.744"W | 2.89 | |
| 1025.00 | 15.250 | 156.610 | 1015.26 | -92.83 | -92.63 | 37.55 | 1697892.82 | 14543519.99 | 40°02'45.301"N | 104°47'40.660"W | 0.37 | |
| 1057.00 | 15.160 | 156.260 | 1046.14 | -100.54 | -100.32 | 40.90 | 1697896.19 | 14543512.31 | 40°02'45.225"N | 104°47'40.617"W | 0.40 | |
| 1089.00 | 16.390 | 154.950 | 1076.94 | -108.48 | -108.24 | 44.50 | 1697899.80 | 14543504.40 | 40°02'45.146"N | 104°47'40.571"W | 4.00 | |
| 1120.00 | 16.570 | 154.230 | 1106.66 | -116.44 | -116.19 | 48.27 | 1697903.59 | 14543496.47 | 40°02'45.068"N | 104°47'40.522"W | 0.88 | |
| 1152.00 | 16.520 | 152.300 | 1137.34 | -124.60 | -124.33 | 52.37 | 1697907.71 | 14543488.34 | 40°02'44.987"N | 104°47'40.470"W | 1.72 | |
| 1184.00 | 16.880 | 151.510 | 1167.99 | -132.74 | -132.44 | 56.70 | 1697912.05 | 14543480.25 | 40°02'44.907"N | 104°47'40.414"W | 1.33 | |
| 1216.00 | 17.090 | 151.510 | 1198.59 | -140.98 | -140.65 | 61.16 | 1697916.53 | 14543472.04 | 40°02'44.826"N | 104°47'40.357"W | 0.66 | |
| 1247.00 | 17.800 | 153.790 | 1228.17 | -149.25 | -148.91 | 65.43 | 1697920.81 | 14543463.80 | 40°02'44.744"N | 104°47'40.302"W | 3.18 | |
| 1279.00 | 17.970 | 154.060 | 1258.62 | -158.10 | -157.73 | 69.75 | 1697925.15 | 14543454.99 | 40°02'44.657"N | 104°47'40.246"W | 0.59 | |
| 1311.00 | 17.970 | 155.030 | 1289.06 | -167.04 | -166.65 | 73.99 | 1697929.41 | 14543446.09 | 40°02'44.569"N | 104°47'40.192"W | 0.94 | |
| 1343.00 | 17.750 | 155.940 | 1319.52 | -175.99 | -175.58 | 78.06 | 1697933.50 | 14543437.17 | 40°02'44.481"N | 104°47'40.139"W | 1.11 | |
| 1374.00 | 17.530 | 155.030 | 1349.06 | -184.56 | -184.12 | 81.96 | 1697937.42 | 14543428.64 | 40°02'44.396"N | 104°47'40.089"W | 1.14 | |
| 1406.00 | 17.140 | 154.590 | 1379.61 | -193.21 | -192.75 | 86.02 | 1697941.50 | 14543420.02 | 40°02'44.311"N | 104°47'40.037"W | 1.29 | |
| 1438.00 | 17.050 | 153.090 | 1410.19 | -201.67 | -201.20 | 90.16 | 1697945.66 | 14543411.59 | 40°02'44.228"N | 104°47'39.984"W | 1.41 | |
| 1469.00 | 16.610 | 152.300 | 1439.87 | -209.67 | -209.17 | 94.28 | 1697949.79 | 14543403.63 | 40°02'44.149"N | 104°47'39.931"W | 1.60 | |
| 1501.00 | 16.740 | 151.070 | 1470.52 | -217.77 | -217.25 | 98.64 | 1697954.17 | 14543395.56 | 40°02'44.069"N | 104°47'39.875"W | 1.18 | |

REFERENCE WELLPATH IDENTIFICATION

| | | | |
|----------|--------------------------------------|----------|---|
| Operator | KERR-MCGEE OIL & GAS ONSHORE LP (WA) | Slot | SLOT#10 BUROUGH 26C-17HZ (775'FSL & 908'FEL,SEC.17) |
| Area | COLORADO | Well | BUROUGH 26C-17HZ |
| Field | WELD COUNTY (UTM/TRUE NORTH) | Wellbore | BUROUGH 26C-17HZ AWB |
| Facility | SEC.17-T1N-R66W | | |

WELLPATH DATA (188 stations) † = interpolated/extrapolated station

| MD (ft) | Inclination (°) | Azimuth (°) | TVD (ft) | Vert Sect (ft) | North (ft) | East (ft) | Grid East (US ft) | Grid North (US ft) | Latitude | Longitude | DLS (°/100ft) | Comments |
|------------|--------------------|----------------|-------------|-------------------|---------------|--------------|----------------------|-----------------------|----------------|-----------------|------------------|--|
| 1533.00 | 17.750 | 151.250 | 1501.08 | -226.11 | -225.56 | 103.21 | 1697958.76 | 14543387.26 | 40°02'43.987"N | 104°47'39.816"W | 3.16 | |
| 1564.00 | 17.970 | 152.120 | 1530.59 | -234.50 | -233.93 | 107.72 | 1697963.29 | 14543378.91 | 40°02'43.904"N | 104°47'39.758"W | 1.12 | |
| 1596.00 | 18.410 | 154.500 | 1560.99 | -243.45 | -242.86 | 112.20 | 1697967.79 | 14543370.00 | 40°02'43.816"N | 104°47'39.700"W | 2.70 | |
| 1628.00 | 19.160 | 155.110 | 1591.28 | -252.80 | -252.18 | 116.59 | 1697972.19 | 14543360.69 | 40°02'43.724"N | 104°47'39.644"W | 2.42 | |
| 1659.00 | 19.690 | 154.590 | 1620.52 | -262.15 | -261.51 | 120.97 | 1697976.60 | 14543351.37 | 40°02'43.632"N | 104°47'39.588"W | 1.80 | |
| 1691.00 | 19.730 | 155.110 | 1650.65 | -271.95 | -271.28 | 125.56 | 1697981.20 | 14543341.61 | 40°02'43.535"N | 104°47'39.529"W | 0.56 | |
| 1723.00 | 19.690 | 155.030 | 1680.77 | -281.76 | -281.07 | 130.11 | 1697985.77 | 14543331.84 | 40°02'43.438"N | 104°47'39.470"W | 0.15 | |
| 1755.00 | 19.600 | 155.460 | 1710.91 | -291.55 | -290.84 | 134.61 | 1697990.30 | 14543322.09 | 40°02'43.342"N | 104°47'39.412"W | 0.53 | |
| 1787.00 | 20.000 | 154.940 | 1741.02 | -301.41 | -300.68 | 139.16 | 1697994.87 | 14543312.26 | 40°02'43.245"N | 104°47'39.354"W | 1.37 | |
| 1818.00 | 19.420 | 155.290 | 1770.20 | -310.92 | -310.16 | 143.56 | 1697999.29 | 14543302.79 | 40°02'43.151"N | 104°47'39.297"W | 1.91 | |
| 1834.00 | 19.120 | 154.760 | 1785.30 | -315.72 | -314.95 | 145.79 | 1698001.53 | 14543298.01 | 40°02'43.104"N | 104°47'39.268"W | 2.17 | LAST SURFACE MWD+IFR1 SURVEY |
| 1933.00 | 18.220 | 153.810 | 1879.09 | -344.35 | -343.50 | 159.53 | 1698015.33 | 14543269.50 | 40°02'42.821"N | 104°47'39.092"W | 0.96 | FIRST BHGE MWD+IFR1+SC SURVEY |
| 2022.00 | 20.240 | 163.430 | 1963.14 | -371.65 | -370.76 | 170.07 | 1698025.92 | 14543242.28 | 40°02'42.552"N | 104°47'38.956"W | 4.21 | |
| 2112.00 | 20.470 | 156.670 | 2047.54 | -401.08 | -400.13 | 180.74 | 1698036.66 | 14543212.94 | 40°02'42.262"N | 104°47'38.819"W | 2.62 | |
| 2201.00 | 19.770 | 155.820 | 2131.10 | -429.17 | -428.15 | 193.07 | 1698049.05 | 14543184.96 | 40°02'41.985"N | 104°47'38.660"W | 0.85 | |
| 2291.00 | 19.010 | 154.540 | 2216.00 | -456.36 | -455.27 | 205.61 | 1698061.64 | 14543157.88 | 40°02'41.717"N | 104°47'38.499"W | 0.97 | |
| 2380.00 | 18.020 | 153.580 | 2300.39 | -481.84 | -480.69 | 217.96 | 1698074.05 | 14543132.50 | 40°02'41.466"N | 104°47'38.340"W | 1.16 | |
| 2470.00 | 18.900 | 159.830 | 2385.77 | -508.05 | -506.84 | 229.18 | 1698085.33 | 14543106.39 | 40°02'41.207"N | 104°47'38.196"W | 2.41 | |
| 2559.00 | 20.350 | 158.770 | 2469.60 | -536.06 | -534.80 | 239.76 | 1698095.96 | 14543078.47 | 40°02'40.931"N | 104°47'38.060"W | 1.68 | |
| 2648.00 | 19.420 | 157.530 | 2553.29 | -564.22 | -562.90 | 251.02 | 1698107.28 | 14543050.41 | 40°02'40.653"N | 104°47'37.915"W | 1.15 | |
| 2738.00 | 18.410 | 157.100 | 2638.43 | -591.20 | -589.82 | 262.27 | 1698118.59 | 14543023.52 | 40°02'40.387"N | 104°47'37.771"W | 1.13 | |
| 2828.00 | 18.000 | 152.120 | 2723.93 | -616.65 | -615.20 | 274.30 | 1698130.68 | 14542998.18 | 40°02'40.136"N | 104°47'37.616"W | 1.79 | |
| 2917.00 | 18.140 | 158.530 | 2808.55 | -641.76 | -640.25 | 285.80 | 1698142.23 | 14542973.16 | 40°02'39.889"N | 104°47'37.468"W | 2.24 | |
| 3006.00 | 19.710 | 158.870 | 2892.73 | -668.71 | -667.15 | 296.28 | 1698152.77 | 14542946.30 | 40°02'39.623"N | 104°47'37.333"W | 1.77 | |
| 3095.00 | 18.190 | 157.870 | 2976.91 | -695.63 | -694.01 | 306.93 | 1698163.47 | 14542919.47 | 40°02'39.358"N | 104°47'37.197"W | 1.75 | |
| 3185.00 | 21.040 | 161.830 | 3061.68 | -724.06 | -722.38 | 317.26 | 1698173.87 | 14542891.14 | 40°02'39.077"N | 104°47'37.064"W | 3.49 | |
| 3275.00 | 19.410 | 160.630 | 3146.13 | -753.57 | -751.84 | 327.26 | 1698183.93 | 14542861.71 | 40°02'38.786"N | 104°47'36.935"W | 1.87 | |
| 3364.00 | 17.770 | 160.190 | 3230.48 | -780.35 | -778.58 | 336.77 | 1698193.50 | 14542835.01 | 40°02'38.522"N | 104°47'36.813"W | 1.85 | |
| 3454.00 | 19.450 | 154.400 | 3315.78 | -806.85 | -805.01 | 347.90 | 1698204.68 | 14542808.61 | 40°02'38.261"N | 104°47'36.670"W | 2.77 | |
| 3543.00 | 17.720 | 153.320 | 3400.14 | -832.38 | -830.48 | 360.38 | 1698217.22 | 14542783.18 | 40°02'38.009"N | 104°47'36.509"W | 1.98 | |
| 3633.00 | 18.430 | 157.760 | 3485.70 | -857.85 | -855.89 | 371.92 | 1698228.81 | 14542757.81 | 40°02'37.758"N | 104°47'36.361"W | 1.72 | |
| 3723.00 | 19.010 | 157.520 | 3570.94 | -884.62 | -882.60 | 382.91 | 1698239.86 | 14542731.13 | 40°02'37.494"N | 104°47'36.220"W | 0.65 | |
| 3812.00 | 20.280 | 157.080 | 3654.76 | -912.28 | -910.20 | 394.46 | 1698251.47 | 14542703.57 | 40°02'37.221"N | 104°47'36.071"W | 1.44 | |
| 3902.00 | 18.260 | 155.320 | 3739.71 | -939.53 | -937.38 | 406.42 | 1698263.49 | 14542676.43 | 40°02'36.953"N | 104°47'35.917"W | 2.34 | |
| 3991.00 | 19.690 | 155.300 | 3823.87 | -965.88 | -963.68 | 418.51 | 1698275.63 | 14542650.17 | 40°02'36.693"N | 104°47'35.762"W | 1.61 | |
| 4081.00 | 17.630 | 154.000 | 3909.14 | -991.98 | -989.70 | 430.82 | 1698288.00 | 14542624.18 | 40°02'36.435"N | 104°47'35.604"W | 2.33 | |
| 4170.00 | 16.360 | 158.090 | 3994.25 | -1015.78 | -1013.45 | 441.41 | 1698298.63 | 14542600.47 | 40°02'36.201"N | 104°47'35.467"W | 1.96 | |
| 4260.00 | 17.060 | 161.770 | 4080.45 | -1040.12 | -1037.75 | 450.27 | 1698307.55 | 14542576.20 | 40°02'35.961"N | 104°47'35.354"W | 1.41 | |
| 4282.00† | 18.176 | 160.436 | 4101.42 | -1046.43 | -1044.05 | 452.43 | 1698309.72 | 14542569.91 | 40°02'35.898"N | 104°47'35.326"W | 5.39 | ENTER LANDBOX (269°FNL & 456°FEL,SEC.20) 40.0433051 -104.7931461 |
| 4349.00 | 21.620 | 157.200 | 4164.41 | -1067.71 | -1065.28 | 460.71 | 1698318.05 | 14542548.71 | 40°02'35.689"N | 104°47'35.219"W | 5.39 | |
| 4439.00 | 20.110 | 157.150 | 4248.51 | -1097.32 | -1094.82 | 473.14 | 1698330.55 | 14542519.20 | 40°02'35.397"N | 104°47'35.059"W | 1.68 | |
| 4529.00 | 18.670 | 157.140 | 4333.40 | -1124.91 | -1122.36 | 484.75 | 1698342.21 | 14542491.71 | 40°02'35.125"N | 104°47'34.910"W | 1.60 | |
| 4618.00 | 21.220 | 158.710 | 4417.06 | -1153.11 | -1150.50 | 496.13 | 1698353.65 | 14542463.61 | 40°02'34.846"N | 104°47'34.764"W | 2.93 | |
| 4707.00 | 19.370 | 159.130 | 4500.53 | -1181.97 | -1179.30 | 507.24 | 1698364.82 | 14542434.84 | 40°02'34.562"N | 104°47'34.621"W | 2.09 | |
| 4797.00 | 19.530 | 157.300 | 4585.39 | -1209.85 | -1207.12 | 518.36 | 1698376.01 | 14542407.06 | 40°02'34.287"N | 104°47'34.478"W | 0.70 | |

| REFERENCE WELLPATH IDENTIFICATION | | | |
|-----------------------------------|--------------------------------------|----------|---|
| Operator | KERR-MCGEE OIL & GAS ONSHORE LP (WA) | Slot | SLOT#10 BUROUGH 26C-17HZ (775'FSL & 908'FEL,SEC.17) |
| Area | COLORADO | Well | BUROUGH 26C-17HZ |
| Field | WELD COUNTY (UTM/TRUE NORTH) | Wellbore | BUROUGH 26C-17HZ AWB |
| Facility | SEC.17-T1N-R66W | | |

| WELLPATH DATA (188 stations) † = interpolated/extrapolated station | | | | | | | | | | | | |
|--|--------------------|----------------|-------------|-------------------|---------------|--------------|----------------------|-----------------------|----------------|-----------------|------------------|--|
| MD (ft) | Inclination (°) | Azimuth (°) | TVD (ft) | Vert Sect (ft) | North (ft) | East (ft) | Grid East (US ft) | Grid North (US ft) | Latitude | Longitude | DLS (°/100ft) | Comments |
| 4887.00 | 18.150 | 156.070 | 4670.57 | -1236.61 | -1233.81 | 529.85 | 1698387.55 | 14542380.40 | 40°02'34.023"N | 104°47'34.330"W | 1.60 | |
| 5001.00 | 15.860 | 157.450 | 4779.58 | -1267.30 | -1264.43 | 543.03 | 1698400.80 | 14542349.82 | 40°02'33.721"N | 104°47'34.161"W | 2.04 | |
| 5090.00 | 14.930 | 158.940 | 4865.38 | -1289.27 | -1286.36 | 551.82 | 1698409.63 | 14542327.92 | 40°02'33.504"N | 104°47'34.048"W | 1.14 | |
| 5180.00 | 14.080 | 153.880 | 4952.52 | -1309.97 | -1307.01 | 560.80 | 1698418.66 | 14542307.30 | 40°02'33.300"N | 104°47'33.932"W | 1.69 | |
| 5269.00 | 11.970 | 149.010 | 5039.23 | -1327.66 | -1324.65 | 570.32 | 1698428.21 | 14542289.70 | 40°02'33.125"N | 104°47'33.810"W | 2.67 | |
| 5359.00 | 9.500 | 154.500 | 5127.65 | -1342.41 | -1339.36 | 578.33 | 1698436.25 | 14542275.01 | 40°02'32.980"N | 104°47'33.707"W | 2.97 | |
| 5448.00 | 6.910 | 153.670 | 5215.73 | -1353.86 | -1350.79 | 583.86 | 1698441.81 | 14542263.60 | 40°02'32.867"N | 104°47'33.636"W | 2.91 | |
| 5537.00 | 4.250 | 157.670 | 5304.30 | -1361.73 | -1358.64 | 587.49 | 1698445.46 | 14542255.76 | 40°02'32.790"N | 104°47'33.589"W | 3.02 | |
| 5627.00 | 2.480 | 167.350 | 5394.14 | -1366.73 | -1363.62 | 589.19 | 1698447.16 | 14542250.78 | 40°02'32.740"N | 104°47'33.567"W | 2.06 | |
| 5716.00 | 1.260 | 152.390 | 5483.09 | -1369.48 | -1366.37 | 590.06 | 1698448.04 | 14542248.04 | 40°02'32.713"N | 104°47'33.556"W | 1.47 | |
| 5806.00 | 0.970 | 154.690 | 5573.07 | -1371.05 | -1367.93 | 590.85 | 1698448.83 | 14542246.48 | 40°02'32.698"N | 104°47'33.546"W | 0.33 | |
| 5895.00 | 0.400 | 147.870 | 5662.07 | -1371.99 | -1368.88 | 591.33 | 1698449.32 | 14542245.53 | 40°02'32.688"N | 104°47'33.540"W | 0.65 | |
| 5985.00 | 0.250 | 175.480 | 5752.07 | -1372.46 | -1369.34 | 591.52 | 1698449.50 | 14542245.07 | 40°02'32.684"N | 104°47'33.538"W | 0.24 | |
| 6074.00 | 0.100 | 263.250 | 5841.07 | -1372.66 | -1369.54 | 591.45 | 1698449.44 | 14542244.87 | 40°02'32.682"N | 104°47'33.538"W | 0.30 | |
| 6164.00 | 0.400 | 333.440 | 5931.07 | -1372.39 | -1369.27 | 591.24 | 1698449.22 | 14542245.14 | 40°02'32.684"N | 104°47'33.541"W | 0.42 | |
| 6254.00 | 0.470 | 314.650 | 6021.06 | -1371.84 | -1368.73 | 590.83 | 1698448.82 | 14542245.68 | 40°02'32.690"N | 104°47'33.546"W | 0.18 | |
| 6343.00 | 0.720 | 332.990 | 6110.06 | -1371.09 | -1367.97 | 590.32 | 1698448.30 | 14542246.43 | 40°02'32.697"N | 104°47'33.553"W | 0.35 | |
| 6433.00 | 1.070 | 320.680 | 6200.05 | -1369.93 | -1366.82 | 589.53 | 1698447.51 | 14542247.59 | 40°02'32.709"N | 104°47'33.563"W | 0.44 | |
| 6522.00 | 1.660 | 327.260 | 6289.02 | -1368.20 | -1365.09 | 588.31 | 1698446.28 | 14542249.31 | 40°02'32.726"N | 104°47'33.579"W | 0.68 | |
| 6612.00 | 1.790 | 338.930 | 6378.98 | -1365.78 | -1362.68 | 587.09 | 1698445.07 | 14542251.71 | 40°02'32.750"N | 104°47'33.594"W | 0.42 | |
| 6701.00 | 1.810 | 344.620 | 6467.94 | -1363.12 | -1360.03 | 586.22 | 1698444.19 | 14542254.36 | 40°02'32.776"N | 104°47'33.606"W | 0.20 | |
| 6791.00 | 2.080 | 341.790 | 6557.88 | -1360.20 | -1357.11 | 585.34 | 1698443.30 | 14542257.28 | 40°02'32.805"N | 104°47'33.617"W | 0.32 | |
| 6880.00 | 1.730 | 338.930 | 6646.84 | -1357.40 | -1354.32 | 584.35 | 1698442.30 | 14542260.07 | 40°02'32.832"N | 104°47'33.630"W | 0.41 | |
| 6970.00 | 2.070 | 327.130 | 6736.79 | -1354.76 | -1351.69 | 582.98 | 1698440.93 | 14542262.69 | 40°02'32.858"N | 104°47'33.647"W | 0.57 | |
| 6975.00† | 2.441 | 336.188 | 6741.78 | -1354.59 | -1351.52 | 582.88 | 1698440.83 | 14542262.87 | 40°02'32.860"N | 104°47'33.648"W | 10.26 | KOP |
| 7059.00 | 10.620 | 7.280 | 6825.18 | -1345.26 | -1342.18 | 583.14 | 1698441.07 | 14542272.20 | 40°02'32.952"N | 104°47'33.645"W | 10.26 | |
| 7149.00 | 21.630 | 4.980 | 6911.51 | -1320.45 | -1317.36 | 585.64 | 1698443.51 | 14542297.02 | 40°02'33.197"N | 104°47'33.613"W | 12.25 | |
| 7239.00 | 25.430 | 5.130 | 6994.01 | -1284.68 | -1281.57 | 588.81 | 1698446.60 | 14542332.80 | 40°02'33.551"N | 104°47'33.572"W | 4.22 | |
| 7328.00 | 30.470 | 359.920 | 7072.62 | -1243.06 | -1239.94 | 590.49 | 1698448.18 | 14542374.41 | 40°02'33.963"N | 104°47'33.551"W | 6.29 | |
| 7418.00 | 35.890 | 357.200 | 7147.92 | -1193.84 | -1190.74 | 589.17 | 1698446.74 | 14542423.60 | 40°02'34.449"N | 104°47'33.568"W | 6.24 | |
| 7507.00 | 38.790 | 357.320 | 7218.67 | -1139.92 | -1136.82 | 586.59 | 1698444.04 | 14542477.49 | 40°02'34.982"N | 104°47'33.601"W | 3.26 | |
| 7596.00 | 47.180 | 357.860 | 7283.72 | -1079.33 | -1076.25 | 584.06 | 1698441.38 | 14542538.03 | 40°02'35.580"N | 104°47'33.633"W | 9.44 | |
| 7686.00 | 53.110 | 359.230 | 7341.37 | -1010.29 | -1007.21 | 582.35 | 1698439.50 | 14542607.03 | 40°02'36.262"N | 104°47'33.655"W | 6.69 | |
| 7775.00 | 54.810 | 357.740 | 7393.73 | -938.34 | -935.28 | 580.43 | 1698437.42 | 14542678.93 | 40°02'36.973"N | 104°47'33.680"W | 2.34 | |
| 7864.00 | 57.380 | 1.460 | 7443.39 | -864.50 | -861.44 | 579.95 | 1698436.77 | 14542752.74 | 40°02'37.703"N | 104°47'33.686"W | 4.51 | |
| 7954.00 | 68.630 | 1.880 | 7484.17 | -784.49 | -781.41 | 582.30 | 1698438.94 | 14542832.75 | 40°02'38.494"N | 104°47'33.656"W | 12.51 | |
| 8043.00 | 78.560 | 0.580 | 7509.28 | -699.25 | -696.16 | 584.11 | 1698440.55 | 14542917.96 | 40°02'39.336"N | 104°47'33.633"W | 11.24 | |
| 8133.00 | 83.400 | 359.940 | 7523.39 | -610.39 | -607.30 | 584.51 | 1698440.74 | 14543006.79 | 40°02'40.214"N | 104°47'33.627"W | 5.42 | |
| 8179.00† | 87.064 | 359.567 | 7527.21 | -564.56 | -561.47 | 584.31 | 1698440.44 | 14543052.60 | 40°02'40.667"N | 104°47'33.630"W | 8.01 | LANDING (214'FSL & 324'FEL, SEC.17) 40.0446298 -104.7926750 |
| 8222.00 | 90.490 | 359.220 | 7528.13 | -521.58 | -518.49 | 583.85 | 1698439.88 | 14543095.57 | 40°02'41.092"N | 104°47'33.636"W | 8.01 | |
| 8287.00† | 89.154 | 359.964 | 7528.33 | -456.58 | -453.49 | 583.39 | 1698439.27 | 14543160.53 | 40°02'41.734"N | 104°47'33.642"W | 2.35 | EXIT RADIUS HEEL (322'FSL & 325'FEL, SEC.17) 40.0449262 -104.7926783 |
| 8312.00 | 88.640 | 0.250 | 7528.81 | -431.58 | -428.50 | 583.44 | 1698439.26 | 14543185.52 | 40°02'41.981"N | 104°47'33.641"W | 2.35 | |
| 8401.00 | 88.120 | 0.910 | 7531.33 | -342.63 | -339.54 | 584.34 | 1698439.96 | 14543274.45 | 40°02'42.861"N | 104°47'33.630"W | 0.94 | |
| 8491.00 | 88.060 | 0.160 | 7534.32 | -252.69 | -249.59 | 585.18 | 1698440.59 | 14543364.36 | 40°02'43.749"N | 104°47'33.619"W | 0.84 | |
| 8580.00 | 88.890 | 359.860 | 7536.69 | -163.73 | -160.62 | 585.19 | 1698440.40 | 14543453.29 | 40°02'44.629"N | 104°47'33.618"W | 0.99 | |

REFERENCE WELLPATH IDENTIFICATION

| | | | |
|----------|--------------------------------------|----------|---|
| Operator | KERR-MCGEE OIL & GAS ONSHORE LP (WA) | Slot | SLOT#10 BUROUGH 26C-17HZ (775'FSL & 908'FEL,SEC.17) |
| Area | COLORADO | Well | BUROUGH 26C-17HZ |
| Field | WELD COUNTY (UTM/TRUE NORTH) | Wellbore | BUROUGH 26C-17HZ AWB |
| Facility | SEC.17-T1N-R66W | | |

WELLPATH DATA (188 stations)

| MD [ft] | Inclination [°] | Azimuth [°] | TVD [ft] | Vert Sect [ft] | North [ft] | East [ft] | Grid East [US ft] | Grid North [US ft] | Latitude | Longitude | DLS [°/100ft] | Comments |
|----------|-----------------|-------------|----------|----------------|------------|-----------|-------------------|--------------------|----------------|-----------------|---------------|----------|
| 8670.00 | 89.970 | 359.490 | 7537.59 | -73.73 | -70.63 | 584.68 | 1698439.68 | 14543543.24 | 40°02'45.518"N | 104°47'33.625"W | 1.27 | |
| 8759.00 | 90.460 | 358.390 | 7537.25 | 15.26 | 18.35 | 583.04 | 1698437.83 | 14543632.19 | 40°02'46.397"N | 104°47'33.646"W | 1.35 | |
| 8849.00 | 90.960 | 358.560 | 7536.14 | 105.23 | 108.31 | 580.64 | 1698435.23 | 14543722.11 | 40°02'47.286"N | 104°47'33.677"W | 0.59 | |
| 8938.00 | 89.720 | 359.310 | 7535.61 | 194.22 | 197.29 | 578.99 | 1698433.37 | 14543811.05 | 40°02'48.166"N | 104°47'33.698"W | 1.63 | |
| 9028.00 | 90.520 | 359.100 | 7535.42 | 284.21 | 287.28 | 577.74 | 1698431.91 | 14543901.00 | 40°02'49.055"N | 104°47'33.714"W | 0.92 | |
| 9117.00 | 88.670 | 0.140 | 7536.05 | 373.21 | 376.27 | 577.15 | 1698431.12 | 14543989.95 | 40°02'49.934"N | 104°47'33.722"W | 2.38 | |
| 9206.00 | 89.080 | 0.010 | 7537.80 | 462.19 | 465.26 | 577.26 | 1698431.03 | 14544078.90 | 40°02'50.814"N | 104°47'33.720"W | 0.48 | |
| 9295.00 | 89.970 | 359.530 | 7538.54 | 551.18 | 554.25 | 576.91 | 1698430.47 | 14544167.86 | 40°02'51.693"N | 104°47'33.725"W | 1.14 | |
| 9385.00 | 90.860 | 359.290 | 7537.89 | 641.18 | 644.24 | 575.98 | 1698429.34 | 14544257.81 | 40°02'52.583"N | 104°47'33.737"W | 1.02 | |
| 9474.00 | 89.720 | 358.640 | 7537.43 | 730.17 | 733.23 | 574.37 | 1698427.52 | 14544346.76 | 40°02'53.462"N | 104°47'33.757"W | 1.47 | |
| 9564.00 | 90.180 | 358.690 | 7537.51 | 820.15 | 823.20 | 572.28 | 1698425.22 | 14544436.69 | 40°02'54.351"N | 104°47'33.784"W | 0.51 | |
| 9653.00 | 91.080 | 358.160 | 7536.53 | 909.13 | 912.16 | 569.83 | 1698422.57 | 14544525.61 | 40°02'55.230"N | 104°47'33.816"W | 1.17 | |
| 9743.00 | 89.600 | 0.050 | 7536.00 | 999.11 | 1002.14 | 568.42 | 1698420.96 | 14544615.55 | 40°02'56.119"N | 104°47'33.834"W | 2.67 | |
| 9832.00 | 88.830 | 359.370 | 7537.22 | 1088.10 | 1091.13 | 567.97 | 1698420.30 | 14544704.50 | 40°02'56.999"N | 104°47'33.839"W | 1.15 | |
| 9922.00 | 89.230 | 359.680 | 7538.74 | 1178.09 | 1181.12 | 567.23 | 1698419.35 | 14544794.45 | 40°02'57.888"N | 104°47'33.849"W | 0.56 | |
| 10011.00 | 90.120 | 359.310 | 7539.25 | 1267.09 | 1270.11 | 566.44 | 1698418.36 | 14544883.40 | 40°02'58.767"N | 104°47'33.859"W | 1.08 | |
| 10101.00 | 91.140 | 359.150 | 7538.26 | 1357.08 | 1360.09 | 565.23 | 1698416.94 | 14544973.35 | 40°02'59.657"N | 104°47'33.875"W | 1.15 | |
| 10190.00 | 89.230 | 359.450 | 7537.97 | 1446.07 | 1449.08 | 564.15 | 1698415.65 | 14545062.30 | 40°03'00.536"N | 104°47'33.889"W | 2.17 | |
| 10280.00 | 89.540 | 359.100 | 7538.94 | 1536.06 | 1539.07 | 563.01 | 1698414.31 | 14545152.25 | 40°03'01.425"N | 104°47'33.903"W | 0.52 | |
| 10370.00 | 89.630 | 358.800 | 7539.59 | 1626.05 | 1629.05 | 561.36 | 1698412.45 | 14545242.19 | 40°03'02.315"N | 104°47'33.924"W | 0.35 | |
| 10459.00 | 90.340 | 0.260 | 7539.61 | 1715.05 | 1718.05 | 560.63 | 1698411.52 | 14545331.15 | 40°03'03.194"N | 104°47'33.934"W | 1.82 | |
| 10549.00 | 90.960 | 0.300 | 7538.59 | 1805.04 | 1808.04 | 561.07 | 1698411.75 | 14545421.11 | 40°03'04.083"N | 104°47'33.928"W | 0.69 | |
| 10638.00 | 91.510 | 359.800 | 7536.67 | 1894.01 | 1897.02 | 561.15 | 1698411.62 | 14545510.05 | 40°03'04.963"N | 104°47'33.927"W | 0.84 | |
| 10728.00 | 92.580 | 359.590 | 7533.46 | 1983.96 | 1986.96 | 560.67 | 1698410.94 | 14545599.95 | 40°03'05.852"N | 104°47'33.933"W | 1.21 | |
| 10817.00 | 90.740 | 0.500 | 7530.88 | 2072.91 | 2075.92 | 560.74 | 1698410.80 | 14545688.88 | 40°03'06.731"N | 104°47'33.932"W | 2.31 | |
| 10907.00 | 91.820 | 0.740 | 7528.87 | 2162.88 | 2165.89 | 561.71 | 1698411.57 | 14545778.81 | 40°03'07.620"N | 104°47'33.920"W | 1.23 | |
| 10997.00 | 89.970 | 0.910 | 7527.47 | 2252.84 | 2255.86 | 563.01 | 1698412.65 | 14545868.76 | 40°03'08.509"N | 104°47'33.903"W | 2.06 | |
| 11086.00 | 89.940 | 1.000 | 7527.54 | 2341.82 | 2344.85 | 564.49 | 1698413.93 | 14545957.71 | 40°03'09.388"N | 104°47'33.884"W | 0.11 | |
| 11176.00 | 90.190 | 1.100 | 7527.44 | 2431.80 | 2434.84 | 566.14 | 1698415.37 | 14546047.66 | 40°03'10.278"N | 104°47'33.863"W | 0.30 | |
| 11265.00 | 90.950 | 1.280 | 7526.55 | 2520.76 | 2523.81 | 567.99 | 1698417.02 | 14546136.61 | 40°03'11.157"N | 104°47'33.839"W | 0.88 | |
| 11355.00 | 90.460 | 359.560 | 7525.44 | 2610.74 | 2613.80 | 568.65 | 1698417.47 | 14546226.56 | 40°03'12.046"N | 104°47'33.830"W | 1.99 | |
| 11444.00 | 90.920 | 359.670 | 7524.37 | 2699.74 | 2702.79 | 568.05 | 1698416.67 | 14546315.51 | 40°03'12.926"N | 104°47'33.838"W | 0.53 | |
| 11533.00 | 88.520 | 359.680 | 7524.81 | 2788.73 | 2791.78 | 567.55 | 1698415.96 | 14546404.47 | 40°03'13.805"N | 104°47'33.845"W | 2.70 | |
| 11623.00 | 89.110 | 359.640 | 7526.67 | 2878.71 | 2881.76 | 567.01 | 1698415.21 | 14546494.41 | 40°03'14.694"N | 104°47'33.851"W | 0.66 | |
| 11712.00 | 90.650 | 359.860 | 7526.85 | 2967.71 | 2970.76 | 566.62 | 1698414.62 | 14546583.37 | 40°03'15.574"N | 104°47'33.856"W | 1.75 | |
| 11802.00 | 90.990 | 359.930 | 7525.57 | 3057.70 | 3060.75 | 566.46 | 1698414.25 | 14546673.32 | 40°03'16.463"N | 104°47'33.858"W | 0.39 | |
| 11891.00 | 91.630 | 359.620 | 7523.53 | 3146.67 | 3149.72 | 566.11 | 1698413.70 | 14546762.26 | 40°03'17.342"N | 104°47'33.863"W | 0.80 | |
| 11981.00 | 89.690 | 359.190 | 7522.49 | 3236.66 | 3239.71 | 565.17 | 1698412.55 | 14546852.21 | 40°03'18.231"N | 104°47'33.875"W | 2.21 | |
| 12070.00 | 90.000 | 359.340 | 7522.73 | 3325.66 | 3328.70 | 564.03 | 1698411.21 | 14546941.16 | 40°03'19.111"N | 104°47'33.890"W | 0.39 | |
| 12160.00 | 90.680 | 358.920 | 7522.20 | 3415.65 | 3418.69 | 562.67 | 1698409.63 | 14547031.11 | 40°03'20.000"N | 104°47'33.907"W | 0.89 | |
| 12249.00 | 91.290 | 359.440 | 7520.67 | 3504.63 | 3507.66 | 561.39 | 1698408.16 | 14547120.05 | 40°03'20.879"N | 104°47'33.923"W | 0.90 | |
| 12339.00 | 89.850 | 359.410 | 7519.78 | 3594.63 | 3597.65 | 560.49 | 1698407.05 | 14547210.00 | 40°03'21.769"N | 104°47'33.935"W | 1.60 | |
| 12428.00 | 90.430 | 358.470 | 7519.56 | 3683.62 | 3686.63 | 558.84 | 1698405.20 | 14547298.94 | 40°03'22.648"N | 104°47'33.956"W | 1.24 | |
| 12518.00 | 88.950 | 358.470 | 7520.04 | 3773.59 | 3776.60 | 556.44 | 1698402.59 | 14547388.87 | 40°03'23.537"N | 104°47'33.987"W | 1.64 | |
| 12607.00 | 89.630 | 357.540 | 7521.15 | 3862.55 | 3865.54 | 553.34 | 1698399.28 | 14547477.76 | 40°03'24.416"N | 104°47'34.027"W | 1.29 | |

| REFERENCE WELLPATH IDENTIFICATION | | | |
|-----------------------------------|--------------------------------------|----------|---|
| Operator | KERR-MCGEE OIL & GAS ONSHORE LP (WA) | Slot | SLOT#10 BUROUGH 26C-17HZ (775'FSL & 908'FEL,SEC.17) |
| Area | COLORADO | Well | BUROUGH 26C-17HZ |
| Field | WELD COUNTY (UTM/TRUE NORTH) | Wellbore | BUROUGH 26C-17HZ AWB |
| Facility | SEC.17-T1N-R66W | | |

| WELLPATH DATA (188 stations) † = interpolated/extrapolated station | | | | | | | | | | | | |
|--|--------------------|----------------|-------------|-------------------|---------------|--------------|----------------------|-----------------------|----------------|-----------------|------------------|---|
| MD [ft] | Inclination [°] | Azimuth [°] | TVD [ft] | Vert Sect [ft] | North [ft] | East [ft] | Grid East [US ft] | Grid North [US ft] | Latitude | Longitude | DLS [°/100ft] | Comments |
| 12697.00 | 89.140 | 0.020 | 7522.11 | 3952.52 | 3955.50 | 551.43 | 1698397.16 | 14547567.69 | 40°03'25.305"N | 104°47'34.051"W | 2.81 | |
| 12787.00 | 89.540 | 359.950 | 7523.15 | 4042.51 | 4045.50 | 551.40 | 1698396.93 | 14547657.65 | 40°03'26.194"N | 104°47'34.052"W | 0.45 | |
| 12876.00 | 89.820 | 0.000 | 7523.65 | 4131.51 | 4134.50 | 551.36 | 1698396.69 | 14547746.61 | 40°03'27.074"N | 104°47'34.052"W | 0.32 | |
| 12899.00† | 89.794 | 359.775 | 7523.73 | 4154.51 | 4157.50 | 551.32 | 1698396.59 | 14547769.60 | 40°03'27.301"N | 104°47'34.053"W | 0.98 | ENTER RADIUS TOE (312'FNL & 339'FEL,SEC.17) 40.0575837 -104.7927924 |
| 12966.00 | 89.720 | 359.120 | 7524.01 | 4221.51 | 4224.49 | 550.67 | 1698395.79 | 14547836.57 | 40°03'27.963"N | 104°47'34.061"W | 0.98 | |
| 13055.00 | 90.770 | 359.060 | 7523.63 | 4310.50 | 4313.48 | 549.26 | 1698394.17 | 14547925.51 | 40°03'28.843"N | 104°47'34.079"W | 1.18 | |
| 13117.00 | 91.480 | 358.970 | 7522.41 | 4372.49 | 4375.46 | 548.19 | 1698392.96 | 14547987.46 | 40°03'29.455"N | 104°47'34.093"W | 1.15 | LAST BHGE MWD+IFR1+SC SURVEY |
| 13163.00 | 91.480 | 358.970 | 7521.22 | 4418.47 | 4421.43 | 547.37 | 1698392.03 | 14548033.42 | 40°03'29.910"N | 104°47'34.104"W | 0.00 | PTB (49'FNL & 343'FEL,SEC.17) 40.0583082 -104.7928065 |

| TARGETS | | | | | | | | |
|---|-------------|---------------|--------------|----------------------|-----------------------|----------------|-----------------|---------|
| Name | TVD (ft) | North (ft) | East (ft) | Grid East (US ft) | Grid North (US ft) | Latitude | Longitude | Shape |
| SEC.17-T1N-R66W | 0.00 | 0.00 | -134.93 | 1697720.19 | 14543612.19 | 40°02'46.216"N | 104°47'42.878"W | polygon |
| BUROUGH 26C-17HZ BHL REV-1(47'FNL & 335'FEL,SEC.17) | 7514.00 | 4422.81 | 555.35 | 1698400.01 | 14548034.82 | 40°03'29.923"N | 104°47'34.001"W | point |
| BUROUGH 26C-17HZ HEEL REV-1(155'FSL & 328'FEL,SEC.17) | 7516.00 | -616.05 | 582.07 | 1698438.32 | 14542998.04 | 40°02'40.128"N | 104°47'33.659"W | point |
| BUROUGH 26C-17HZ LANDBOX | 7516.00 | 0.00 | 0.00 | 1697855.07 | 14543612.50 | 40°02'46.216"N | 104°47'41.143"W | polygon |
| BUROUGH 26C-17HZ RADIUS 1 | 7516.00 | -771.31 | 913.72 | 1698770.20 | 14542843.60 | 40°02'38.594"N | 104°47'29.394"W | polygon |
| BUROUGH 26C-17HZ RADIUS 2 | 7516.00 | 4466.03 | 892.48 | 1698736.90 | 14548078.80 | 40°03'30.350"N | 104°47'29.665"W | polygon |

| WELLPATH COMPOSITION - Ref Wellbore: BUROUGH 26C-17HZ AWB | | | | Ref Wellpath: BUROUGH 26C-17HZ AWP | | |
|---|----------------|------------------------------|--|---|--|----------------------|
| Start MD (ft) | End MD (ft) | Positional Uncertainty Model | | Log Name/Comment | | Wellbore |
| 26.00 | 1834.00 | Custom APC | ISCWSA REV 2 MWD+IFR1 (approximation) | Custom APC ISCWSA Rev-2 MWD+IFR1 <138 - 1834> | | BUROUGH 26C-17HZ AWB |
| 1834.00 | 13117.00 | Custom APC | ISCWSA REV 2 MWD+IFR1+SC (approximation) | BHGE Custom APC ISCWSA Rev-2 MWD+IFR1+SC <1933 - 13117> | | BUROUGH 26C-17HZ AWB |
| 13117.00 | 13163.00 | Blind Drilling (std) | | Projection to bit | | BUROUGH 26C-17HZ AWB |

| REFERENCE WELLPATH IDENTIFICATION | | | |
|-----------------------------------|--------------------------------------|----------|---|
| Operator | KERR-MCGEE OIL & GAS ONSHORE LP (WA) | Slot | SLOT#10 BUROUGH 26C-17HZ (775'FSL & 908'FEL,SEC.17) |
| Area | COLORADO | Well | BUROUGH 26C-17HZ |
| Field | WELD COUNTY (UTM/TRUE NORTH) | Wellbore | BUROUGH 26C-17HZ AWB |
| Facility | SEC.17-T1N-R66W | | |

| WELLPATH COMMENTS | | | | |
|-------------------|--------------------|----------------|-------------|---|
| MD [ft] | Inclination [°] | Azimuth [°] | TVD [ft] | Comment |
| 138.00 | 1.100 | 344.690 | 137.99 | FIRST SURFACE MWD+IFR1 SURVEY |
| 1834.00 | 19.120 | 154.760 | 1785.30 | LAST SURFACE MWD+IFR1 SURVEY |
| 1933.00 | 18.220 | 153.810 | 1879.09 | FIRST BHGE MWD+IFR1+SC SURVEY |
| 4282.00 | 18.176 | 160.436 | 4101.42 | ENTER LANDBOX (269'FNL & 456'FEL,SEC.20) 40.0433051 -104.7931461 |
| 6975.00 | 2.441 | 336.188 | 6741.78 | KOP |
| 8179.00 | 87.064 | 359.567 | 7527.21 | LANDING (214'FSL & 324'FEL,SEC.17) 40.0446298 -104.7926750 |
| 8287.00 | 89.154 | 359.964 | 7528.33 | EXIT RADIUS HEEL (322'FSL & 325'FEL,SEC.17) 40.0449262 -104.7926783 |
| 12899.00 | 89.794 | 359.775 | 7523.73 | ENTER RADIUS TOE (312'FNL & 339'FEL,SEC.17) 40.0575837 -104.7927924 |
| 13117.00 | 91.480 | 358.970 | 7522.41 | LAST BHGE MWD+IFR1+SC SURVEY |
| 13163.00 | 91.480 | 358.970 | 7521.22 | PTB (49'FNL & 343'FEL,SEC.17) 40.0583082 -104.7928065 |