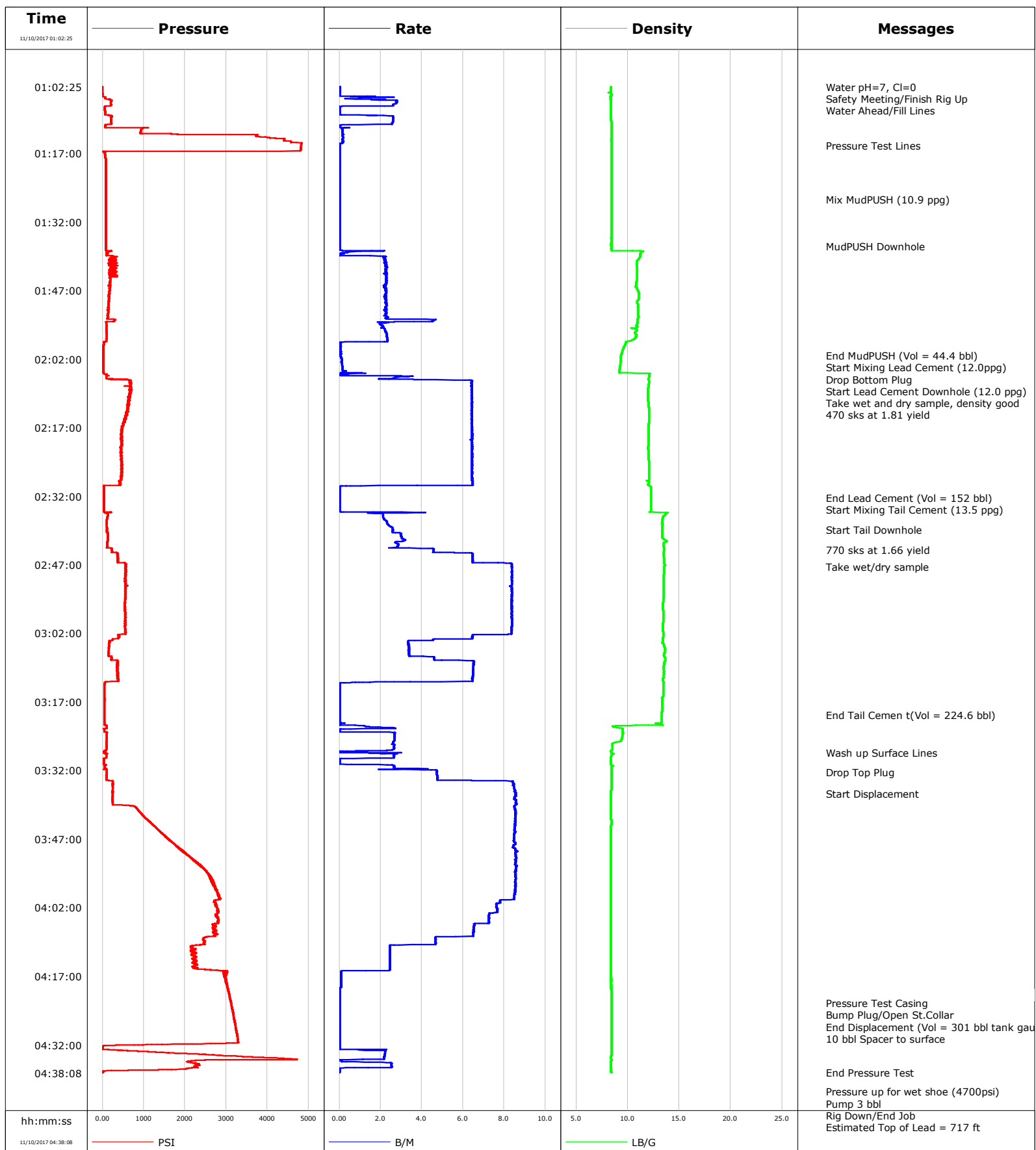


Well Burough 26N-17HZ
Field Wattenberg
Engineer Cameron McNutt
Country United States

Client Anadarko
SIR No. DXVN-00016
Job Type Production
Job Date 11-10-2017



Cementing Service Report

				Customer Anadarko				Job Number DXVN-00016			
Well Burrough 26N-17HZ			Location (legal)			Schlumberger Location Cheyenne			Job Start Nov/10/2017		
Field Wattenberg		Formation Name/Type		Deviation 90 deg		Bit Size 7.9 in		Well MD 13002.0 ft		Well TVD 7305.0 ft	
County		State/Province Colorado		BHP psi		BHST 228 degF		BHCT 209 degF		Pore Press. Gradient lb/gal	
Well Master 0631733107		API/UWI									
Rig Name PD564		Drilled For Oil & Gas		Service Via Land		Casing/ Liner					
						Depth, ft		Size, in		Weight, lb/ft	
										Grade	
										Thread	
Offshore Zone		Well Class New		Well Type Development		1875.0		9.6		36.0	
						12954.0		5.5		17.0	
										J55	
										HCP-110	
										8RD	
Drilling Fluid Type OBM		Max. Density 9.50 lb/gal		Plastic Viscosity cP		Tubing/Drill Pipe					
						T/D		Depth, ft		Size, in	
										Weight, lb/ft	
										Grade	
										Thread	
Service Line Cementing		Job Type Production									
Max. Allowed Tub. Press psi		Max. Allowed Ann. Press psi		WH Connection Double Cement head		Perforations/Open Hole					
						Top, ft		Bottom, ft		shot/ft	
										No. of Shots	
										Total Interval	
						ft		ft		ft	
						ft		ft		Diameter	
						ft		ft		in	
						Treat Down Casing		Displacement 301.0 bbl		Packer Type NA	
										Packer Depth ft	
						Tubing Vol. bbl		Casing Vol. 301.0 bbl		Annular Vol. 444.5 bbl	
										Openhole Vol. bbl	
Casing/Tubing Secured <input type="checkbox"/>		1 Hole Vol. Circulated prior to Cement <input checked="" type="checkbox"/>				Casing Tools				Squeeze Job	
Lift Pressure 9300 psi						Shoe Type Float				Squeeze Type	
Pipe Rotated <input type="checkbox"/>		Pipe Reciprocated <input type="checkbox"/>				Shoe Depth 12954.0 ft				Tool Type	
No. Centralizers		Top Plugs 1		Bottom Plugs 1		Stage Tool Type NA				Tool Depth ft	
Cement Head Type Double						Stage Tool Depth ft				Tail Pipe Size in	
Job Scheduled For Nov/09/2017 19:00		Arrived on Location Nov/09/2017 22:30		Leave Location Nov/10/2017 07:00		Collar Type Float				Tail Pipe Depth ft	
						Collar Depth 12952.0 ft				Sqz. Total Vol. bbl	
Date	Time 24-hr clock	Treating Pressure PSI	Flow Rate B/M	Density LB/G	Volume BBL	Message					
11/10/2017	01:02:25	-1	0.0	8.39	0.0	Start Job					
11/10/2017	01:03:34	-1	0.0	8.39	0.0	Safety Meeting/Finish Rig Up					
11/10/2017	01:05:39	210	2.8	8.39	2.0	Water Ahead/Fill Lines					
11/10/2017	01:15:20	4814	0.0	8.40	10.6	Pressure Test Lines					
11/10/2017	01:27:07	78	0.0	8.40	10.7	Mix MudPUSH (10.9 ppg)					
11/10/2017	01:37:18	80	0.0	8.40	10.7	MudPUSH Downhole					
11/10/2017	02:01:15	21	0.1	9.35	55.0	End MudPUSH (Vol = 44.4 bbl)					
11/10/2017	02:02:30	18	0.1	9.31	55.1	Start Mixing Lead Cement (12.0ppg)					
11/10/2017	02:03:48	21	0.1	9.23	55.3	Drop Bottom Plug					
11/10/2017	02:04:01	20	0.2	9.22	55.3	Start Lead Cement Downhole (12.0 ppg)					
11/10/2017	02:05:44	88	3.4	12.11	55.9	Take wet and dry sample, density good					
11/10/2017	02:29:46	31	0.3	12.14	207.1	End Lead Cement (Vol = 152 bbl)					
11/10/2017	02:30:27	31	0.0	12.24	207.1	Start Mixing Tail Cement (13.5 ppg)					
11/10/2017	02:36:47	110	2.1	13.38	210.1	Start Tail Downhole					
11/10/2017	02:40:23	124	3.0	13.35	219.0	Take wet/dry sample					
11/10/2017	03:12:51	50	0.1	13.51	431.7	End Tail Cemen t(Vol = 224.6 bbl)					
11/10/2017	03:21:09	46	0.0	13.32	431.7	Wash up Surface Lines					
11/10/2017	03:25:22	101	2.7	9.38	437.9	Drop Top Plug					
11/10/2017	03:30:03	30	0.0	8.39	447.3	Start Displacement					
11/10/2017	04:15:57	2921	0.1	8.40	763.6	Pressure Test Casing					
11/10/2017	04:16:00	2924	0.1	8.39	763.6	Bump Plug/Open St.Collar					

Well			Field		Job Start		Customer		Job Number	
Borough 26N-17HZ			Wattenberg		Nov/10/2017		Anadarko		DXVN-00016	
Date	Time 24-hr clock	Treating Pressure PSI	Flow Rate B/M	Density LB/G	Volume BBL	Message				
11/10/2017	04:23:10	3122	0.0	8.40	763.9	10 bbl Spacer to surface				
11/10/2017	04:31:03	3283	0.0	8.40	763.9	End Pressure Test				
11/10/2017	04:35:15	3191	0.2	8.40	768.6	Pressure up for wet shoe (4700psi)				
11/10/2017	04:37:00	2172	1.4	8.40	771.6	Pump 3 bbl				
11/10/2017	04:38:01	11	0.0	8.40	771.7	Rig Down/End Job				
11/10/2017	04:38:02	11	0.0	8.40	771.7	Estimated Top of Lead = 717 ft				

Post Job Summary

Average Pump Rates, bbl/min					Volume of Fluid Injected, bbl					
Slurry 4.3	N2	Mud	Maximum Rate 8.6	Total Slurry 771.8	Mud 0.0	Spacer 0.0	N2			
Treating Pressure Summary, psi					Breakdown Fluid					
Maximum 4827	Final 11	Average 903	Bump Plug to	Breakdown	Type	Volume bbl	Density lb/gal			
Avg. N2 Percent %	Designed Slurry Volume 375.3 bbl		Displacement 0.0 bbl	Mix Water Temp 60 degF	Cement Circulated to Surface? <input type="checkbox"/>		Volume bbl			
					Washed Thru Perfs <input type="checkbox"/>		To ft			
Customer or Authorized Representative			Schlumberger Supervisor Cameron McNutt			Circulation Lost <input type="checkbox"/>	Job Completed <input checked="" type="checkbox"/>			
						-	-			