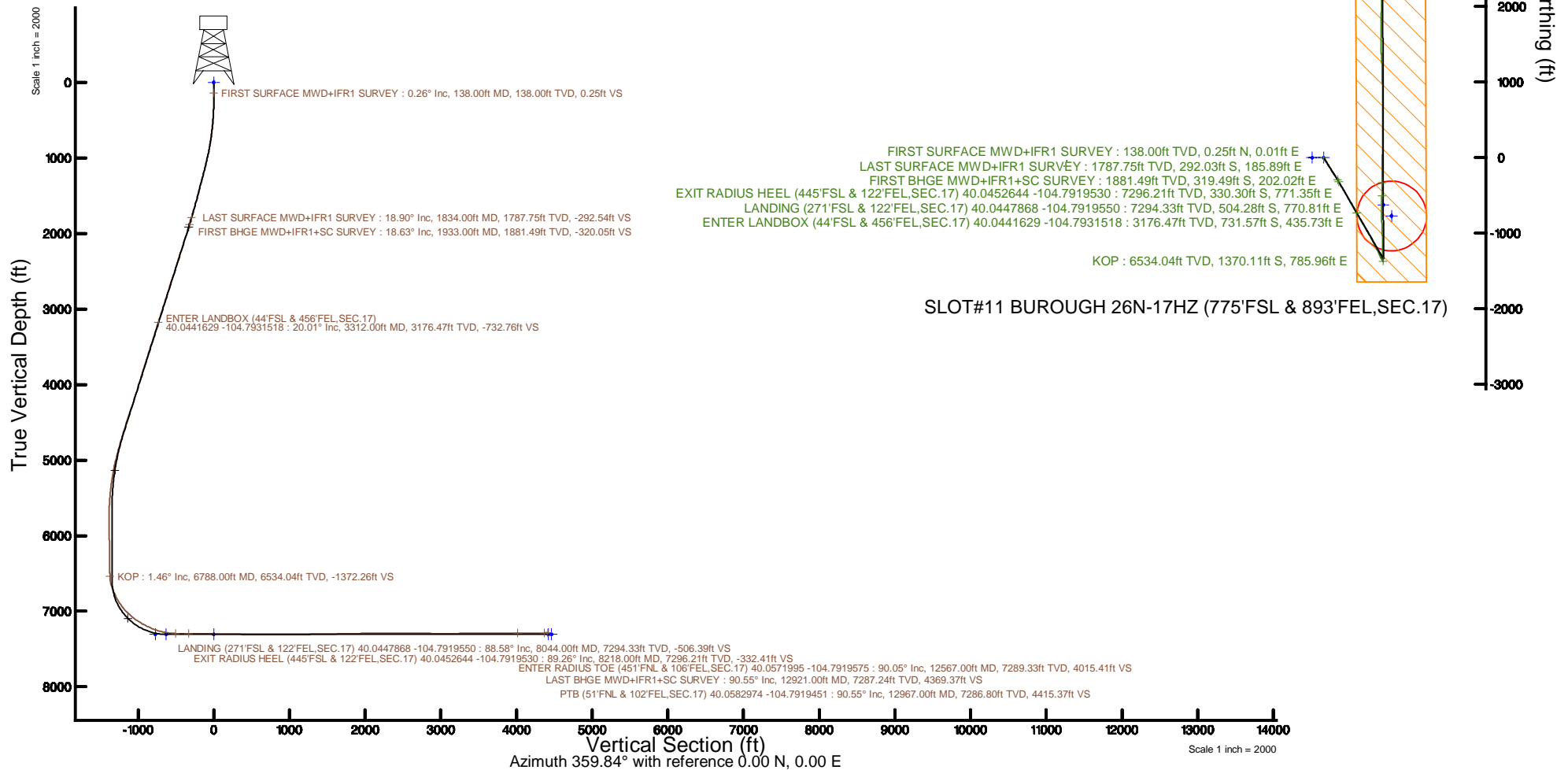


Location:	COLORADO	Slot:	SL07111 BURGHOUGH 26N-17Z (775'FSL & 893'FEL, SEC. 17)
Field:	WELD COUNTY (UTM/TRUE NORTH)	Well:	BURGHOUGH 26N-17Z
Facility:	SEC. 17-T1N-R66W	Wellbore:	BURGHOUGH 26N-17Z PWB
Plot reference wellpath is BURGHOUGH 26N-17Z PWP Rev-B.0		Grid System: NAD83 / UTM Zone 13 North, US feet	
True vertical depths are referenced to PD 564 (26') (RT)		* = Wellpath was transformed from a different geoidic datum	
Measured depths are referenced to PD 564 (26') (RT)		North Reference: True north	
PD 564 (26') (RT) to Mean Sea Level: 5005 feet		Scale: True distance	
Mean Sea Level to Mud line (At Slot: SL07111 BURGHOUGH 26N-17Z (775'FSL & 893'FEL, SEC. 17)): 0 feet		Depths are in feet	
Coordinates are in feet referenced to Slot		Created by: painsear on 2017-11-09	
		Database: WA_DEN_Anadarko_Defn	



### REFERENCE WELLPATH IDENTIFICATION

Operator	KERR-MCGEE OIL & GAS ONSHORE LP (WA)	Slot	SLOT#11 BURROUGH 26N-17HZ (775'FSL & 893'FEL,SEC.17)
Area	COLORADO	Well	BURROUGH 26N-17HZ
Field	WELD COUNTY (UTM/TRUE NORTH)	Wellbore	BURROUGH 26N-17HZ AWB
Facility	SEC.17-T1N-R66W		

### REPORT SETUP INFORMATION

Projection System	NAD83 / UTM Zone 13 North, US feet	Software System	WellArchitect® 5.0
North Reference	True	User	Painsetr
Scale	0.999604	Report Generated	11/9/2017 at 9:57 AM
Convergence at slot	0.14° East	Database/Source file	WA_DEN_Anadarko_Defn/BURROUGH_26N-17HZ_AWP.xml

### WELLPATH LOCATION

	Local coordinates		Grid coordinates		Geographic coordinates	
	North[ft]	East[ft]	Easting[US ft]	Northing[US ft]	Latitude	Longitude
Slot Location	-8437.77	-384.89	1697870.15	14543612.53	40°02'46.216"N	104°47'40.949"W
Facility Reference Pt			1698235.31	14552047.82	40°04'09.600"N	104°47'36.000"W
Field Reference Pt			1698235.31	14552047.82	40°04'09.600"N	104°47'36.000"W

### WELLPATH DATUM

Calculation method	Minimum curvature	PD 564 (26') (RT) to Facility Vertical Datum	5005.00ft
Horizontal Reference Pt	Slot	PD 564 (26') (RT) to Mean Sea Level	5005.00ft
Vertical Reference Pt	PD 564 (26') (RT)	PD 564 (26') (RT) to Mud Line at Slot (SLOT#11 BURROUGH 26N-17HZ (775'FSL & 893'FEL,SEC.17))	5005.00ft
MD Reference Pt	PD 564 (26') (RT)	Section Origin	N 0.00, E 0.00 ft
Field Vertical Reference	Mean Sea Level	Section Azimuth	359.84°

REFERENCE WELLPATH IDENTIFICATION			
Operator	KERR-MCGEE OIL & GAS ONSHORE LP (WA)	Slot	SLOT#11 BUROUGH 26N-17HZ (775'FSL & 893'FEL,SEC.17)
Area	COLORADO	Well	BUROUGH 26N-17HZ
Field	WELD COUNTY (UTM/TRUE NORTH)	Wellbore	BUROUGH 26N-17HZ AWB
Facility	SEC.17-T1N-R66W		

WELLPATH DATA (150 stations) † = interpolated/extrapolated station												
MD (ft)	Inclination (°)	Azimuth (°)	TVD (ft)	Vert Sect (ft)	North (ft)	East (ft)	Grid East (US ft)	Grid North (US ft)	Latitude	Longitude	DLS (°/100ft)	Comments
0.00†	0.000	3.330	0.00	0.00	0.00	0.00	1697870.15	14543612.53	40°02'46.216"N	104°47'40.949"W	0.00	
26.00	0.000	3.330	26.00	0.00	0.00	0.00	1697870.15	14543612.53	40°02'46.216"N	104°47'40.949"W	0.00	
138.00	0.260	3.330	138.00	0.25	0.25	0.01	1697870.17	14543612.79	40°02'46.219"N	104°47'40.949"W	0.23	FIRST SURFACE MWD+IFR1 SURVEY
233.00	0.620	88.670	233.00	0.48	0.48	0.54	1697870.69	14543613.02	40°02'46.221"N	104°47'40.942"W	0.69	
327.00	1.980	137.360	326.97	-0.71	-0.70	2.15	1697872.30	14543611.84	40°02'46.209"N	104°47'40.921"W	1.74	
422.00	3.910	145.710	421.84	-4.60	-4.59	5.09	1697875.25	14543607.96	40°02'46.171"N	104°47'40.884"W	2.08	
517.00	6.240	143.690	516.46	-11.45	-11.42	9.97	1697880.14	14543601.14	40°02'46.103"N	104°47'40.821"W	2.46	
613.00	6.680	149.580	611.86	-20.49	-20.44	15.89	1697886.08	14543592.14	40°02'46.014"N	104°47'40.745"W	0.83	
708.00	8.260	151.860	706.05	-31.29	-31.23	21.90	1697892.12	14543581.37	40°02'45.907"N	104°47'40.667"W	1.69	
803.00	11.070	148.780	799.69	-45.13	-45.05	29.85	1697900.09	14543567.58	40°02'45.771"N	104°47'40.565"W	3.01	
898.00	13.320	147.990	892.54	-62.24	-62.13	40.38	1697910.66	14543550.53	40°02'45.602"N	104°47'40.430"W	2.37	
994.00	14.240	149.050	985.78	-81.77	-81.63	52.31	1697922.63	14543531.06	40°02'45.409"N	104°47'40.276"W	0.99	
1089.00	15.420	148.070	1077.61	-102.55	-102.37	65.00	1697935.36	14543510.35	40°02'45.204"N	104°47'40.113"W	1.27	
1184.00	16.920	148.080	1168.85	-125.04	-124.82	78.99	1697949.40	14543487.94	40°02'44.982"N	104°47'39.933"W	1.58	
1279.00	17.840	147.380	1259.51	-149.07	-148.82	94.15	1697964.60	14543463.99	40°02'44.745"N	104°47'39.738"W	0.99	
1374.00	17.490	147.730	1350.03	-173.44	-173.14	109.61	1697980.12	14543439.71	40°02'44.505"N	104°47'39.540"W	0.39	
1469.00	16.480	146.850	1440.89	-196.84	-196.50	124.60	1697995.16	14543416.40	40°02'44.274"N	104°47'39.347"W	1.10	
1564.00	17.530	147.640	1531.73	-220.25	-219.86	139.63	1698010.23	14543393.08	40°02'44.043"N	104°47'39.154"W	1.13	
1659.00	18.590	145.090	1622.05	-244.79	-244.37	155.96	1698026.61	14543368.62	40°02'43.801"N	104°47'38.944"W	1.39	
1755.00	18.810	148.520	1712.99	-270.59	-270.12	172.80	1698043.50	14543342.92	40°02'43.547"N	104°47'38.727"W	1.17	
1834.00	18.900	149.750	1787.75	-292.54	-292.03	185.89	1698056.64	14543321.05	40°02'43.330"N	104°47'38.559"W	0.52	LAST SURFACE MWD+IFR1 SURVEY
1933.00	18.630	149.410	1881.49	-320.05	-319.49	202.02	1698072.82	14543293.63	40°02'43.059"N	104°47'38.351"W	0.29	FIRST BHGE MWD+IFR1+SC SURVEY
2023.00	19.330	152.420	1966.59	-345.66	-345.07	216.23	1698087.09	14543268.10	40°02'42.806"N	104°47'38.169"W	1.34	
2112.00	20.870	151.350	2050.17	-372.67	-372.04	230.65	1698101.57	14543241.17	40°02'42.539"N	104°47'37.983"W	1.78	
2202.00	19.870	150.400	2134.54	-400.08	-399.41	245.89	1698116.86	14543213.85	40°02'42.269"N	104°47'37.787"W	1.17	
2291.00	20.690	148.600	2218.02	-426.70	-425.98	261.55	1698132.58	14543187.33	40°02'42.006"N	104°47'37.586"W	1.16	
2381.00	20.960	150.390	2302.15	-454.31	-453.55	277.79	1698148.88	14543159.81	40°02'41.734"N	104°47'37.377"W	0.77	
2470.00	19.570	149.420	2385.64	-481.02	-480.22	293.24	1698164.38	14543133.18	40°02'41.470"N	104°47'37.178"W	1.61	
2559.00	19.580	148.180	2469.49	-506.57	-505.73	308.69	1698179.88	14543107.72	40°02'41.218"N	104°47'36.980"W	0.47	
2649.00	20.450	150.850	2554.06	-533.16	-532.27	324.30	1698195.54	14543081.22	40°02'40.956"N	104°47'36.779"W	1.40	
2738.00	20.420	150.640	2637.46	-560.31	-559.38	339.48	1698210.79	14543054.16	40°02'40.688"N	104°47'36.584"W	0.09	
2828.00	19.740	151.890	2721.99	-587.44	-586.47	354.34	1698225.70	14543027.11	40°02'40.420"N	104°47'36.393"W	0.89	
2917.00	19.670	152.800	2805.77	-614.06	-613.05	368.27	1698239.69	14543000.58	40°02'40.158"N	104°47'36.214"W	0.35	
3007.00	20.200	151.010	2890.38	-641.16	-640.12	382.73	1698254.20	14542973.56	40°02'39.890"N	104°47'36.028"W	0.90	
3096.00	19.900	149.850	2973.99	-667.74	-666.66	397.78	1698269.31	14542947.06	40°02'39.628"N	104°47'35.834"W	0.56	
3185.00	20.360	149.560	3057.55	-694.23	-693.10	413.23	1698284.81	14542920.66	40°02'39.367"N	104°47'35.636"W	0.53	
3275.00	20.830	149.860	3141.80	-721.61	-720.44	429.20	1698300.84	14542893.37	40°02'39.096"N	104°47'35.430"W	0.54	
3312.00†	20.006	149.290	3176.47	-732.76	-731.57	435.73	1698307.40	14542882.26	40°02'38.986"N	104°47'35.346"W	2.29	ENTER LANDBOX (44'FSL & 456'FEL,SEC.17) 40.0441629 -104.7931518
3365.00	18.830	148.390	3226.46	-747.86	-746.65	444.85	1698316.54	14542867.21	40°02'38.837"N	104°47'35.229"W	2.29	
3454.00	19.840	149.530	3310.44	-773.16	-771.90	460.04	1698331.78	14542842.01	40°02'38.588"N	104°47'35.034"W	1.21	
3544.00	20.290	150.580	3394.98	-799.95	-798.65	475.45	1698347.25	14542815.30	40°02'38.323"N	104°47'34.836"W	0.64	
3633.00	20.640	151.030	3478.36	-827.16	-825.82	490.62	1698362.48	14542788.18	40°02'38.055"N	104°47'34.641"W	0.43	
3723.00	19.920	149.420	3562.78	-854.28	-852.90	506.11	1698378.02	14542761.15	40°02'37.787"N	104°47'34.442"W	1.01	
3812.00	19.830	147.710	3646.48	-880.14	-878.71	521.88	1698393.85	14542735.38	40°02'37.532"N	104°47'34.239"W	0.66	
3902.00	20.700	147.380	3730.91	-906.49	-905.01	538.61	1698410.63	14542709.12	40°02'37.272"N	104°47'34.024"W	0.97	

REFERENCE WELLPATH IDENTIFICATION			
Operator	KERR-MCGEE OIL & GAS ONSHORE LP (WA)	Slot	SLOT#11 BUROUGH 26N-17HZ (775'FSL & 893'FEL,SEC.17)
Area	COLORADO	Well	BUROUGH 26N-17HZ
Field	WELD COUNTY (UTM/TRUE NORTH)	Wellbore	BUROUGH 26N-17HZ AWB
Facility	SEC.17-T1N-R66W		

WELLPATH DATA (150 stations) † = interpolated/extrapolated station												
MD [ft]	Inclination [°]	Azimuth [°]	TVD [ft]	Vert Sect [ft]	North [ft]	East [ft]	Grid East [US ft]	Grid North [US ft]	Latitude	Longitude	DLS [°/100ft]	Comments
3992.00	19.960	150.320	3815.30	-933.27	-931.76	554.79	1698426.87	14542682.43	40°02'37.008"N	104°47'33.816"W	1.40	
4081.00	19.440	147.440	3899.09	-959.00	-957.44	570.29	1698442.42	14542656.79	40°02'36.754"N	104°47'33.616"W	1.24	
4171.00	19.440	149.720	3983.97	-984.60	-983.00	585.90	1698458.08	14542631.28	40°02'36.502"N	104°47'33.416"W	0.84	
4260.00	19.110	150.570	4067.98	-1010.12	-1008.47	600.53	1698472.76	14542605.85	40°02'36.250"N	104°47'33.228"W	0.49	
4350.00	20.110	150.240	4152.76	-1036.42	-1034.74	615.45	1698487.73	14542579.63	40°02'35.990"N	104°47'33.036"W	1.12	
4439.00	20.620	154.990	4236.20	-1063.95	-1062.22	629.67	1698502.01	14542552.19	40°02'35.719"N	104°47'32.853"W	1.94	
4529.00	21.250	154.270	4320.26	-1093.04	-1091.28	643.45	1698515.86	14542523.18	40°02'35.432"N	104°47'32.676"W	0.76	
4618.00	19.990	153.660	4403.55	-1121.24	-1119.44	657.20	1698529.67	14542495.05	40°02'35.153"N	104°47'32.499"W	1.44	
4733.00	19.040	150.770	4511.95	-1155.28	-1153.43	675.08	1698547.62	14542461.12	40°02'34.817"N	104°47'32.269"W	1.18	
4822.00	19.120	152.030	4596.06	-1180.86	-1178.97	689.01	1698561.60	14542435.62	40°02'34.565"N	104°47'32.090"W	0.47	
4912.00	18.640	153.160	4681.22	-1206.74	-1204.82	702.41	1698575.06	14542409.81	40°02'34.310"N	104°47'31.918"W	0.67	
5001.00	18.240	155.440	4765.65	-1232.14	-1230.18	714.63	1698587.32	14542384.49	40°02'34.059"N	104°47'31.761"W	0.93	
5091.00	16.720	155.750	4851.49	-1256.78	-1254.80	725.80	1698598.55	14542359.91	40°02'33.816"N	104°47'31.617"W	1.69	
5180.00	15.680	156.030	4936.95	-1279.47	-1277.46	735.94	1698608.74	14542337.28	40°02'33.592"N	104°47'31.487"W	1.17	
5270.00	14.480	157.120	5023.85	-1300.98	-1298.94	745.26	1698618.10	14542315.83	40°02'33.379"N	104°47'31.367"W	1.37	
5359.00	12.170	152.060	5110.46	-1319.55	-1317.48	753.98	1698626.87	14542297.31	40°02'33.196"N	104°47'31.255"W	2.91	
5448.00	11.120	150.940	5197.62	-1335.36	-1333.28	762.55	1698635.46	14542281.55	40°02'33.040"N	104°47'31.144"W	1.21	
5538.00	9.700	149.110	5286.14	-1349.48	-1347.37	770.65	1698643.60	14542267.48	40°02'32.901"N	104°47'31.040"W	1.62	
5627.00	7.060	153.380	5374.18	-1360.82	-1358.69	776.96	1698649.93	14542256.17	40°02'32.789"N	104°47'30.959"W	3.05	
5716.00	6.220	152.880	5462.58	-1370.01	-1367.88	781.60	1698654.59	14542247.01	40°02'32.698"N	104°47'30.899"W	0.95	
5806.00	3.870	146.370	5552.23	-1376.89	-1374.75	785.51	1698658.51	14542240.15	40°02'32.630"N	104°47'30.849"W	2.68	
5895.00	1.510	156.720	5641.13	-1380.48	-1378.32	787.64	1698660.65	14542236.58	40°02'32.595"N	104°47'30.822"W	2.70	
5985.00	0.420	100.100	5731.11	-1381.63	-1379.47	788.43	1698661.44	14542235.43	40°02'32.584"N	104°47'30.812"W	1.47	
6075.00	0.060	28.790	5821.11	-1381.64	-1379.49	788.78	1698661.79	14542235.42	40°02'32.583"N	104°47'30.807"W	0.45	
6164.00	0.410	351.450	5910.11	-1381.29	-1379.13	788.75	1698661.77	14542235.77	40°02'32.587"N	104°47'30.808"W	0.41	
6254.00	0.740	336.480	6000.11	-1380.44	-1378.28	788.47	1698661.48	14542236.62	40°02'32.595"N	104°47'30.811"W	0.40	
6343.00	0.840	337.630	6089.10	-1379.30	-1377.15	788.00	1698661.00	14542237.75	40°02'32.607"N	104°47'30.817"W	0.11	
6433.00	0.880	338.730	6179.09	-1378.05	-1375.90	787.49	1698660.50	14542239.00	40°02'32.619"N	104°47'30.824"W	0.05	
6522.00	0.760	344.900	6268.08	-1376.84	-1374.69	787.09	1698660.09	14542240.21	40°02'32.631"N	104°47'30.829"W	0.17	
6612.00	0.980	340.780	6358.07	-1375.54	-1373.39	786.68	1698659.68	14542241.51	40°02'32.644"N	104°47'30.834"W	0.25	
6702.00	0.980	344.930	6448.06	-1374.07	-1371.92	786.23	1698659.23	14542242.98	40°02'32.658"N	104°47'30.840"W	0.08	
6788.00†	1.463	355.849	6534.04	-1372.26	-1370.11	785.96	1698658.95	14542244.78	40°02'32.676"N	104°47'30.843"W	0.62	KOP
6791.00	1.480	356.100	6537.03	-1372.18	-1370.03	785.95	1698658.95	14542244.86	40°02'32.677"N	104°47'30.844"W	0.62	
6881.00	12.260	1.590	6626.26	-1361.44	-1359.29	786.14	1698659.11	14542255.60	40°02'32.783"N	104°47'30.841"W	11.99	
6970.00	22.190	357.690	6711.16	-1335.13	-1332.99	785.72	1698658.63	14542281.89	40°02'33.043"N	104°47'30.846"W	11.23	
7060.00	26.020	356.060	6793.30	-1298.44	-1296.30	783.68	1698656.51	14542318.56	40°02'33.406"N	104°47'30.873"W	4.32	
7149.00	30.110	357.300	6871.82	-1256.64	-1254.50	781.29	1698654.02	14542360.33	40°02'33.819"N	104°47'30.903"W	4.64	
7239.00	39.240	359.800	6945.76	-1205.51	-1203.38	780.12	1698652.73	14542411.44	40°02'34.324"N	104°47'30.918"W	10.26	
7328.00	44.350	358.660	7012.09	-1146.22	-1144.09	779.30	1698651.77	14542470.70	40°02'34.910"N	104°47'30.929"W	5.80	
7418.00	50.200	359.390	7073.13	-1080.14	-1078.01	778.19	1698650.51	14542536.75	40°02'35.563"N	104°47'30.943"W	6.53	
7507.00	56.680	358.400	7126.11	-1008.70	-1006.58	776.79	1698648.95	14542608.15	40°02'36.269"N	104°47'30.961"W	7.34	
7597.00	61.090	357.570	7172.61	-931.71	-929.59	774.07	1698646.05	14542685.10	40°02'37.029"N	104°47'30.996"W	4.96	
7686.00	65.790	356.890	7212.40	-852.21	-850.10	770.21	1698642.01	14542764.55	40°02'37.815"N	104°47'31.046"W	5.32	
7775.00	70.290	358.740	7245.67	-769.74	-767.65	767.09	1698638.70	14542846.96	40°02'38.630"N	104°47'31.086"W	5.41	
7865.00	76.680	0.610	7271.24	-683.51	-681.41	766.62	1698638.03	14542933.17	40°02'39.482"N	104°47'31.092"W	7.37	

REFERENCE WELLPATH IDENTIFICATION			
Operator	KERR-MCGEE OIL & GAS ONSHORE LP (WA)	Slot	SLOT#11 BUROUGH 26N-17HZ (775'FSL & 893'FEL,SEC.17)
Area	COLORADO	Well	BUROUGH 26N-17HZ
Field	WELD COUNTY (UTM/TRUE NORTH)	Wellbore	BUROUGH 26N-17HZ AWB
Facility	SEC.17-T1N-R66W		

WELLPATH DATA (150 stations) † = interpolated/extrapolated station												
MD [ft]	Inclination [°]	Azimuth [°]	TVD [ft]	Vert Sect [ft]	North [ft]	East [ft]	Grid East [US ft]	Grid North [US ft]	Latitude	Longitude	DLS °/100ft	Comments
7954.00	82.490	2.090	7287.33	-596.04	-593.94	768.69	1698639.90	14543020.60	40°02'40.346"N	104°47'31.065"W	6.73	
8044.00	88.580	0.620	7294.33	-506.39	-504.28	770.81	1698641.81	14543110.23	40°02'41.232"N	104°47'31.038"W	6.96	LANDING (271'FSL & 122'FEL,SEC.17) 40.0447868 -104.7919550
8133.00	89.850	359.610	7295.55	-417.41	-415.29	770.99	1698641.78	14543199.18	40°02'42.112"N	104°47'31.036"W	1.82	
8218.00†	89.264	0.876	7296.21	-332.41	-330.30	771.35	1698641.95	14543284.14	40°02'42.952"N	104°47'31.031"W	1.64	EXIT RADIUS HEEL (445'FSL & 122'FEL,SEC.17) 40.0452644 -104.7919530
8223.00	89.230	0.950	7296.27	-327.41	-325.30	771.43	1698642.02	14543289.14	40°02'43.001"N	104°47'31.030"W	1.64	
8312.00	89.080	0.810	7297.59	-238.44	-236.32	772.79	1698643.18	14543378.09	40°02'43.881"N	104°47'31.012"W	0.23	
8402.00	89.050	1.070	7299.05	-148.47	-146.34	774.27	1698644.45	14543468.03	40°02'44.770"N	104°47'30.993"W	0.29	
8491.00	89.510	0.910	7300.17	-59.49	-57.37	775.81	1698645.78	14543556.98	40°02'45.649"N	104°47'30.973"W	0.55	
8581.00	89.140	1.080	7301.23	30.48	32.61	777.37	1698647.13	14543646.93	40°02'46.538"N	104°47'30.953"W	0.45	
8670.00	89.050	0.970	7302.64	119.45	121.59	778.96	1698648.52	14543735.87	40°02'47.417"N	104°47'30.933"W	0.16	
8760.00	88.890	0.760	7304.26	209.43	211.56	780.32	1698649.67	14543825.81	40°02'48.307"N	104°47'30.915"W	0.29	
8849.00	88.890	0.480	7305.98	298.40	300.54	781.28	1698650.43	14543914.76	40°02'49.186"N	104°47'30.903"W	0.31	
8939.00	88.430	359.930	7308.09	388.37	390.52	781.60	1698650.54	14544004.70	40°02'50.075"N	104°47'30.899"W	0.80	
9028.00	88.060	359.440	7310.81	477.33	479.47	781.11	1698649.85	14544093.61	40°02'50.954"N	104°47'30.905"W	0.69	
9117.00	90.090	359.860	7312.25	566.31	568.45	780.57	1698649.10	14544182.56	40°02'51.833"N	104°47'30.912"W	2.33	
9207.00	90.120	0.040	7312.08	656.31	658.45	780.49	1698648.81	14544272.52	40°02'52.723"N	104°47'30.913"W	0.20	
9296.00	90.310	359.860	7311.75	745.31	747.45	780.42	1698648.53	14544361.49	40°02'53.602"N	104°47'30.914"W	0.29	
9385.00	90.220	359.470	7311.34	834.31	836.45	779.89	1698647.81	14544450.45	40°02'54.482"N	104°47'30.921"W	0.45	
9475.00	89.780	358.940	7311.34	924.31	926.44	778.65	1698646.35	14544540.40	40°02'55.371"N	104°47'30.937"W	0.77	
9564.00	89.510	358.180	7311.89	1013.28	1015.41	776.41	1698643.91	14544629.33	40°02'56.250"N	104°47'30.965"W	0.91	
9654.00	91.480	358.790	7311.11	1103.25	1105.37	774.03	1698641.32	14544719.25	40°02'57.139"N	104°47'30.996"W	2.29	
9743.00	91.630	358.770	7308.70	1192.20	1194.32	772.14	1698639.23	14544808.15	40°02'58.018"N	104°47'31.020"W	0.17	
9833.00	90.250	357.120	7307.22	1282.13	1284.24	768.91	1698635.79	14544898.03	40°02'58.907"N	104°47'31.062"W	2.39	
9922.00	90.030	356.680	7307.00	1371.01	1373.11	764.10	1698630.78	14544986.86	40°02'59.785"N	104°47'31.123"W	0.55	
10012.00	91.690	359.020	7305.65	1460.94	1463.03	760.72	1698627.19	14545076.73	40°03'00.674"N	104°47'31.167"W	3.19	
10101.00	92.040	0.810	7302.75	1549.89	1551.98	760.59	1698626.86	14545165.64	40°03'01.553"N	104°47'31.169"W	2.05	
10191.00	91.480	0.160	7299.99	1639.84	1641.93	761.35	1698627.41	14545255.56	40°03'02.442"N	104°47'31.159"W	0.95	
10281.00	91.080	359.670	7297.98	1729.82	1731.91	761.22	1698627.07	14545345.50	40°03'03.331"N	104°47'31.160"W	0.70	
10370.00	91.290	1.190	7296.14	1818.79	1820.89	761.88	1698627.53	14545434.45	40°03'04.210"N	104°47'31.152"W	1.72	
10460.00	90.990	1.070	7294.35	1908.75	1910.85	763.66	1698629.10	14545524.38	40°03'05.099"N	104°47'31.129"W	0.36	
10549.00	90.680	0.460	7293.05	1997.73	1999.83	764.85	1698630.08	14545613.33	40°03'05.979"N	104°47'31.114"W	0.77	
10639.00	89.970	0.100	7292.54	2087.72	2089.83	765.29	1698630.31	14545703.29	40°03'06.868"N	104°47'31.108"W	0.88	
10728.00	90.860	1.280	7291.90	2176.71	2178.82	766.36	1698631.18	14545792.24	40°03'07.747"N	104°47'31.094"W	1.66	
10818.00	90.060	359.650	7291.17	2266.70	2268.81	767.09	1698631.70	14545882.20	40°03'08.637"N	104°47'31.085"W	2.02	
10908.00	90.030	359.780	7291.10	2356.70	2358.81	766.64	1698631.05	14545972.16	40°03'09.526"N	104°47'31.090"W	0.15	
10997.00	89.970	359.590	7291.10	2445.70	2447.81	766.15	1698630.35	14546061.12	40°03'10.406"N	104°47'31.097"W	0.22	
11086.00	90.060	359.310	7291.08	2534.69	2536.80	765.30	1698629.29	14546150.08	40°03'11.285"N	104°47'31.108"W	0.33	
11176.00	89.660	358.680	7291.30	2624.68	2626.79	763.72	1698627.51	14546240.03	40°03'12.174"N	104°47'31.128"W	0.83	
11266.00	89.450	358.450	7292.00	2714.66	2716.76	761.46	1698625.05	14546329.95	40°03'13.064"N	104°47'31.157"W	0.35	
11355.00	89.230	359.500	7293.02	2803.64	2805.73	759.87	1698623.25	14546418.89	40°03'13.943"N	104°47'31.177"W	1.21	
11444.00	89.140	359.360	7294.29	2892.63	2894.72	758.99	1698622.16	14546507.84	40°03'14.822"N	104°47'31.189"W	0.19	
11534.00	90.180	2.080	7294.82	2982.61	2984.70	760.12	1698623.09	14546597.79	40°03'15.711"N	104°47'31.174"W	3.24	
11623.00	90.090	1.250	7294.61	3071.56	3073.66	762.70	1698625.47	14546686.72	40°03'16.591"N	104°47'31.141"W	0.94	
11712.00	90.220	0.420	7294.37	3160.55	3162.65	764.00	1698626.56	14546775.68	40°03'17.470"N	104°47'31.124"W	0.94	
11802.00	90.490	0.140	7293.82	3250.54	3252.65	764.44	1698626.79	14546865.64	40°03'18.359"N	104°47'31.118"W	0.43	

REFERENCE WELLPATH IDENTIFICATION			
Operator	KERR-MCGEE OIL & GAS ONSHORE LP (WA)	Slot	SLOT#11 BUROUGH 26N-17HZ (775'FSL & 893'FEL,SEC.17)
Area	COLORADO	Well	BUROUGH 26N-17HZ
Field	WELD COUNTY (UTM/TRUE NORTH)	Wellbore	BUROUGH 26N-17HZ AWB
Facility	SEC.17-T1N-R66W		

WELLPATH DATA (150 stations) † = interpolated/extrapolated station												
MD [ft]	Inclination [°]	Azimuth [°]	TVD [ft]	Vert Sect [ft]	North [ft]	East [ft]	Grid East [US ft]	Grid North [US ft]	Latitude	Longitude	DLS [°/100ft]	Comments
11892.00	90.520	359.180	7293.02	3340.54	3342.64	763.91	1698626.05	14546955.60	40°03'19.249"N	104°47'31.125"W	1.07	
11981.00	90.710	358.830	7292.07	3429.52	3431.62	762.36	1698624.30	14547044.54	40°03'20.128"N	104°47'31.145"W	0.45	
12071.00	90.030	1.060	7291.49	3519.51	3521.62	762.27	1698624.01	14547134.50	40°03'21.017"N	104°47'31.146"W	2.59	
12160.00	90.460	1.270	7291.11	3608.49	3610.60	764.08	1698625.61	14547223.44	40°03'21.897"N	104°47'31.123"W	0.54	
12250.00	90.770	0.880	7290.14	3698.46	3700.58	765.77	1698627.09	14547313.39	40°03'22.786"N	104°47'31.101"W	0.55	
12339.00	90.860	0.350	7288.87	3787.45	3789.56	766.73	1698627.84	14547402.34	40°03'23.665"N	104°47'31.089"W	0.60	
12429.00	89.380	1.050	7288.68	3877.43	3879.55	767.83	1698628.73	14547492.30	40°03'24.555"N	104°47'31.074"W	1.82	
12518.00	89.850	0.800	7289.28	3966.41	3968.54	769.26	1698629.96	14547581.25	40°03'25.434"N	104°47'31.056"W	0.60	
12567.00†	90.051	0.811	7289.33	4015.41	4017.53	769.95	1698630.54	14547630.23	40°03'25.918"N	104°47'31.047"W	0.41	ENTER RADIUS TOE (451'FNL & 106'FEL,SEC.17) 40.0571995 -104.7919575
12608.00	90.220	0.820	7289.23	4056.40	4058.53	770.54	1698631.03	14547671.21	40°03'26.323"N	104°47'31.040"W	0.41	
12698.00	90.680	0.640	7288.52	4146.39	4148.52	771.68	1698631.96	14547761.17	40°03'27.213"N	104°47'31.025"W	0.55	
12787.00	89.750	0.440	7288.19	4235.38	4237.51	772.52	1698632.60	14547850.13	40°03'28.092"N	104°47'31.014"W	1.07	
12877.00	90.800	0.380	7287.76	4325.37	4327.51	773.17	1698633.03	14547940.09	40°03'28.981"N	104°47'31.006"W	1.17	
12921.00	90.550	0.090	7287.24	4369.37	4371.50	773.35	1698633.11	14547984.07	40°03'29.416"N	104°47'31.003"W	0.87	LAST BHGE MWD+IFR1+SC SURVEY
12967.00	90.550	0.090	7286.80	4415.37	4417.50	773.42	1698633.08	14548030.05	40°03'29.871"N	104°47'31.002"W	0.00	PTB (51'FNL & 102'FEL,SEC.17) 40.0582974 -104.7919451

TARGETS								
Name	TVD [ft]	North [ft]	East [ft]	Grid East [US ft]	Grid North [US ft]	Latitude	Longitude	Shape
SEC.17-T1N-R66W	0.00	0.00	-150.02	1697720.19	14543612.19	40°02'46.216"N	104°47'42.878"W	polygon
BUROUGH 26N-17HZ BHL REV-1(45'FNL & 99'FEL,SEC.17)	7305.00	4423.55	776.25	1698635.89	14548036.10	40°03'29.930"N	104°47'30.966"W	point
BUROUGH 26N-17HZ HEEL REV-1(144'FSL & 105'FEL,SEC.17)	7305.00	-625.51	790.12	1698661.40	14542989.09	40°02'40.034"N	104°47'30.790"W	point
BUROUGH 26N-17HZ LANDBOX	7305.00	0.00	0.00	1697870.15	14543612.53	40°02'46.216"N	104°47'40.949"W	polygon
BUROUGH 26N-17HZ RADIUS 1	7305.00	-771.31	898.63	1698770.20	14542843.60	40°02'38.594"N	104°47'29.394"W	polygon
BUROUGH 26N-17HZ RADIUS 2	7305.00	4466.03	877.39	1698736.90	14548078.80	40°03'30.350"N	104°47'29.665"W	polygon

WELLPATH COMPOSITION - Ref Wellbore: BUROUGH 26N-17HZ AWB					Ref Wellpath: BUROUGH 26N-17HZ AWP		
Start MD [ft]	End MD [ft]	Positional Uncertainty Model		Log Name/Comment		Wellbore	
26.00	1834.00	Custom APC_ISCWSA REV 2 MWD+IFR1 (approximation)		Custom APC ISCWSA Rev-2 MWD+IFR1 <138 - 1834>		BUROUGH 26N-17HZ AWB	
1834.00	12921.00	Custom APC_ISCWSA REV 2 MWD+IFR1+SC (approximation)		BHGE Custom APC ISCWSA Rev-2 MWD+IFR1+SC <1933 - 12921>		BUROUGH 26N-17HZ AWB	
12921.00	12967.00	Blind Drilling (std)		Projection to bit		BUROUGH 26N-17HZ AWB	

REFERENCE WELLPATH IDENTIFICATION			
Operator	KERR-MCGEE OIL & GAS ONSHORE LP (WA)	Slot	SLOT#11 BUROUGH 26N-17HZ (775'FSL & 893'FEL,SEC.17)
Area	COLORADO	Well	BUROUGH 26N-17HZ
Field	WELD COUNTY (UTM/TRUE NORTH)	Wellbore	BUROUGH 26N-17HZ AWB
Facility	SEC.17-T1N-R66W		

WELLPATH COMMENTS				
MD [ft]	Inclination [°]	Azimuth [°]	TVD [ft]	Comment
138.00	0.260	3.330	138.00	FIRST SURFACE MWD+IFR1 SURVEY
1834.00	18.900	149.750	1787.75	LAST SURFACE MWD+IFR1 SURVEY
1933.00	18.630	149.410	1881.49	FIRST BHGE MWD+IFR1+SC SURVEY
3312.00	20.006	149.290	3176.47	ENTER LANDBOX (44'FSL & 456'FEL,SEC.17) 40.0441629 -104.7931518
6788.00	1.463	355.849	6534.04	KOP
8044.00	88.580	0.620	7294.33	LANDING (271'FSL & 122'FEL,SEC.17) 40.0447868 -104.7919550
8218.00	89.264	0.876	7296.21	EXIT RADIUS HEEL (445'FSL & 122'FEL,SEC.17) 40.0452644 -104.7919530
12567.00	90.051	0.811	7289.33	ENTER RADIUS TOE (451'FNL & 106'FEL,SEC.17) 40.0571995 -104.7919575
12921.00	90.550	0.090	7287.24	LAST BHGE MWD+IFR1+SC SURVEY
12967.00	90.550	0.090	7286.80	PTB (51'FNL & 102'FEL,SEC.17) 40.0582974 -104.7919451