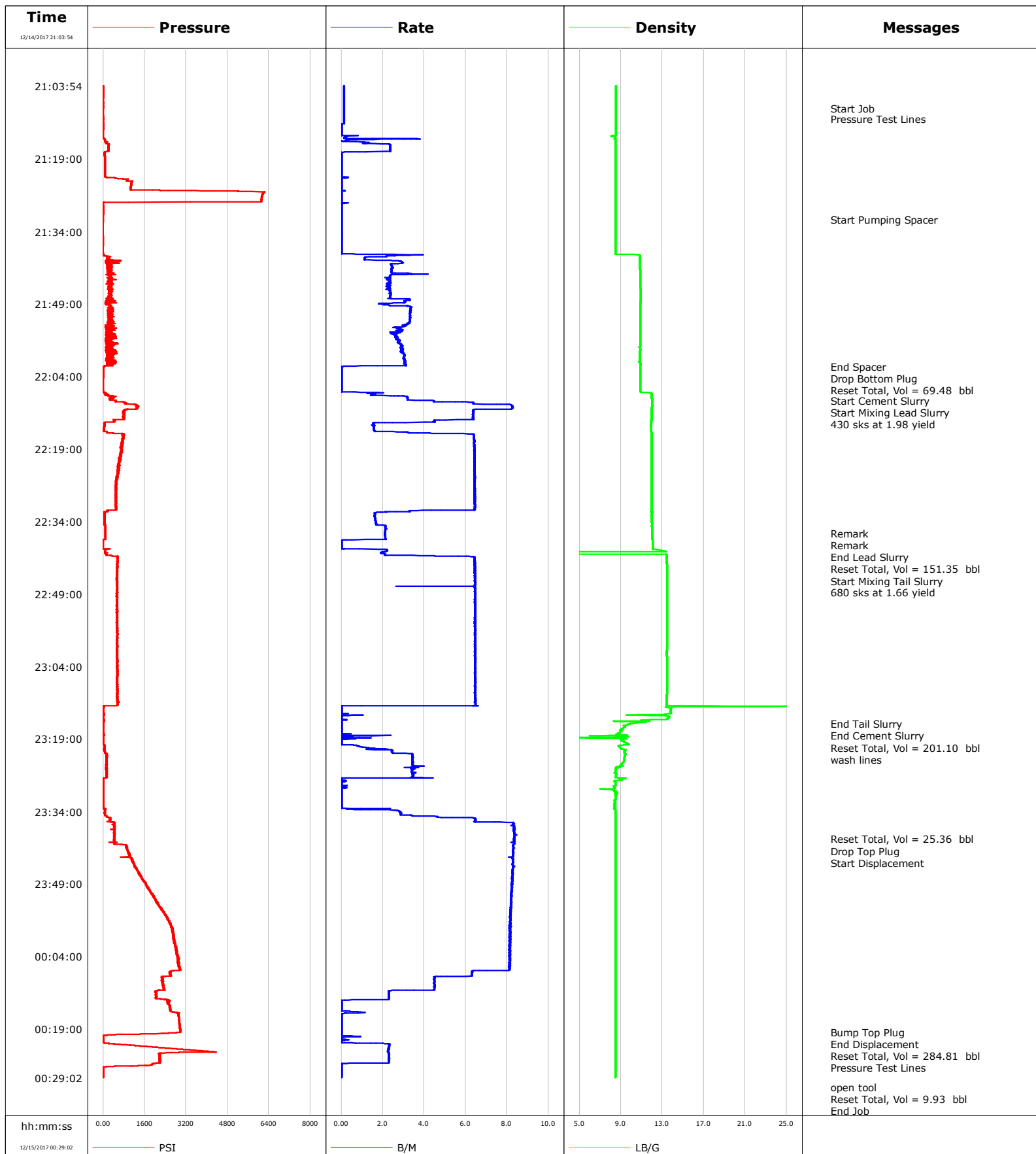


**Well** BUROUGH 2C-17HZ  
**Field** WATTENBERG  
**Engineer** NORM HASLAUER  
**Country** United States

**Client** ANADARKO  
**SIR No.** 2605288  
**Job Type** PRODUCTION  
**Job Date** 12-14-2017



# Cementing Service Report

				Customer ANADARKO				Job Number 2605288			
Well BROUGH 2C-17HZ			Location (legal)			Schlumberger Location			Job Start Dec/14/2017		
Field WATTENBERG		Formation Name/Type Dirty-Sandstone		Deviation deg		Bit Size in		Well MD 12207.0 ft		Well TVD 7575.0 ft	
County WELD		State/Province Colorado		BHP psi		BHST 234 degF		BHCT 206 degF		Pore Press. Gradient lb/gal	
Well Master 0631732873		API/UWI									
Rig Name P564		Drilled For Oil & Gas		Service Via Land		Casing/ Liner					
						Depth, ft		Size, in		Weight, lb/ft	
Offshore Zone		Well Class New		Well Type Development		1891.0		9.6		36.0	
						12207.0		5.5		17.0	
Drilling Fluid Type		Max. Density lb/gal		Plastic Viscosity cP		Tubing/Drill Pipe					
						T/D		Depth, ft		Size, in	
Service Line Cementing		Job Type PRODUCTION									
Max. Allowed Tub. Press psi		Max. Allowed Ann. Press psi		WH Connection		Perforations/Open Hole					
						Top, ft		Bottom, ft		shot/ft	
						ft		ft		Total Interval ft	
						ft		ft		Diameter in	
						ft		ft			
						Treat Down Casing		Displacement 284.0 bbl		Packer Type ft	
						Tubing Vol. bbl		Casing Vol. 287.0 bbl		Annular Vol. bbl	
										Openhole Vol. bbl	
Casing/Tubing Secured <input checked="" type="checkbox"/>		1 Hole Vol. Circulated prior to Cement <input checked="" type="checkbox"/>		Casing Tools				Squeeze Job			
Lift Pressure 2200 psi				Shoe Type Float				Squeeze Type			
Pipe Rotated <input checked="" type="checkbox"/>		Pipe Reciprocated <input checked="" type="checkbox"/>		Shoe Depth 12207.0 ft				Tool Type			
No. Centralizers		Top Plugs 1		Bottom Plugs 1		Stage Tool Type				Tool Depth ft	
Cement Head Type Double				Stage Tool Depth ft				Tail Pipe Size in			
Job Scheduled For Dec/14/2017		Arrived on Location Dec/14/2017		Leave Location Dec/14/2017		Collar Type Float				Tail Pipe Depth ft	
						Collar Depth 12198.0 ft				Sqz. Total Vol. bbl	
Date	Time 24-hr clock	Treating Pressure PSI	Flow Rate B/M	Density LB/G	Volume BBL	Message					
12/14/2017	21:03:54	5	0.1	8.52	23.6	Started Acquisition					
12/14/2017	21:04:24	5	0.1	8.52	23.6						
12/14/2017	21:04:54	4	0.1	8.52	23.7						
12/14/2017	21:05:24	4	0.1	8.52	23.8						
12/14/2017	21:05:54	5	0.1	8.52	23.8						
12/14/2017	21:06:24	-0	0.1	8.53	23.9						
12/14/2017	21:06:54	0	0.1	8.52	24.0						
12/14/2017	21:07:24	-1	0.1	8.52	24.0						
12/14/2017	21:07:54	-0	0.1	8.52	24.1						
12/14/2017	21:08:24	-0	0.1	8.52	24.1						
12/14/2017	21:08:34	-1	0.1	8.52	24.2	Start Job					
12/14/2017	21:08:54	-1	0.1	8.52	24.2						
12/14/2017	21:09:24	-1	0.1	8.52	24.3						
12/14/2017	21:09:54	-1	0.1	8.52	24.3						
12/14/2017	21:10:24	-1	0.1	8.52	24.4						
12/14/2017	21:10:54	-0	0.1	8.52	24.5						
12/14/2017	21:11:24	-1	0.1	8.52	24.5						
12/14/2017	21:11:54	0	0.0	8.52	24.6						
12/14/2017	21:12:24	0	0.0	8.52	24.6						
12/14/2017	21:12:54	0	0.0	8.52	24.6						
12/14/2017	21:13:24	-2	0.0	8.52	24.6						

Well			Field		Job Start	Customer		Job Number
BUROUGH 2C-17HZ			WATTENBERG		Dec/14/2017	ANADARKO		2605288
Date	Time 24-hr clock	Treating Pressure PSI	Flow Rate B/M	Density LB/G	Volume BBL	Message		
12/14/2017	21:14:24	-1	0.3	8.35	24.6			
12/14/2017	21:14:54	51	3.4	8.39	24.9			
12/14/2017	21:15:24	77	0.5	8.47	0.3			
12/14/2017	21:15:54	201	2.0	8.47	0.8			
12/14/2017	21:16:24	197	2.4	8.47	2.0			
12/14/2017	21:16:54	197	2.3	8.47	3.1			
12/14/2017	21:17:24	201	2.4	8.47	4.3			
12/14/2017	21:17:54	50	0.0	8.47	4.7			
12/14/2017	21:18:24	58	0.0	8.47	4.7			
12/14/2017	21:18:54	64	0.0	8.48	4.7			
12/14/2017	21:19:24	67	0.0	8.47	4.7			
12/14/2017	21:19:54	68	0.0	8.47	4.7			
12/14/2017	21:20:24	67	0.0	8.47	4.7			
12/14/2017	21:20:54	69	0.0	8.47	4.7			
12/14/2017	21:21:24	69	0.0	8.47	4.7			
12/14/2017	21:21:54	68	0.0	8.47	4.7			
12/14/2017	21:22:24	68	0.0	8.47	4.7			
12/14/2017	21:22:54	128	0.0	8.48	4.7			
12/14/2017	21:23:24	919	0.0	8.47	4.7			
12/14/2017	21:23:54	1092	0.0	8.47	4.7			
12/14/2017	21:24:24	1076	0.0	8.47	4.7			
12/14/2017	21:24:54	1068	0.0	8.48	4.7			
12/14/2017	21:25:24	1062	0.0	8.47	4.7			
12/14/2017	21:25:54	6211	0.0	8.48	4.7			
12/14/2017	21:26:54	6122	0.0	8.48	4.7			
12/14/2017	21:27:24	6106	0.0	8.48	4.7			
12/14/2017	21:27:54	6093	0.0	8.47	4.7			
12/14/2017	21:28:24	-1	0.0	8.47	4.8			
12/14/2017	21:28:54	0	0.0	8.48	4.8			
12/14/2017	21:29:24	0	0.0	8.47	4.8			
12/14/2017	21:29:54	0	0.0	8.47	4.8			
12/14/2017	21:30:24	-1	0.0	8.47	4.8			
12/14/2017	21:30:54	-17	0.0	8.47	4.8			
12/14/2017	21:31:24	-17	0.0	8.47	4.8			
12/14/2017	21:31:36	-16	0.0	8.47	4.8	Start Pumping Spacer		
12/14/2017	21:31:54	-17	0.0	8.47	4.8			
12/14/2017	21:32:24	-26	0.0	8.48	4.8			
12/14/2017	21:32:54	-26	0.0	8.48	4.8			
12/14/2017	21:33:24	-25	0.0	8.48	4.8			
12/14/2017	21:33:54	-25	0.0	8.47	4.8			
12/14/2017	21:34:24	-24	0.0	8.47	4.8			
12/14/2017	21:34:54	-17	0.0	8.47	4.8			
12/14/2017	21:35:24	-14	0.0	8.47	4.8			
12/14/2017	21:35:54	-16	0.0	8.47	4.8			
12/14/2017	21:36:24	-13	0.0	8.47	4.8			
12/14/2017	21:36:54	-14	0.0	8.47	4.8			
12/14/2017	21:37:24	-23	0.0	8.47	4.8			
12/14/2017	21:37:54	-25	0.0	8.47	4.8			
12/14/2017	21:38:24	-15	0.0	8.47	4.8			
12/14/2017	21:38:54	29	3.5	10.79	5.2			
12/14/2017	21:39:24	154	1.1	10.81	6.3			
12/14/2017	21:39:54	202	1.1	10.81	6.9			
12/14/2017	21:40:24	372	2.9	10.81	8.2			
12/14/2017	21:40:54	362	2.4	10.80	9.5			

Well			Field	Job Start		Customer		Job Number	
BUROUGH 2C-17HZ			WATTENBERG		Dec/14/2017		ANADARKO		2605288
Date	Time 24-hr clock	Treating Pressure PSI	Flow Rate B/M	Density LB/G	Volume BBL	Message			
12/14/2017	21:41:54	205	2.4	10.84	12.0				
12/14/2017	21:42:24	283	2.4	10.84	13.2				
12/14/2017	21:42:54	489	3.1	10.85	14.6				
12/14/2017	21:43:24	255	2.3	10.85	15.8				
12/14/2017	21:43:54	207	2.3	10.87	17.0				
12/14/2017	21:44:24	245	2.3	10.87	18.1				
12/14/2017	21:44:54	373	2.2	10.87	19.3				
12/14/2017	21:45:24	205	2.2	10.87	20.5				
12/14/2017	21:45:54	262	2.2	10.89	21.6				
12/14/2017	21:46:24	218	2.3	10.90	22.8				
12/14/2017	21:46:54	333	2.4	10.90	23.9				
12/14/2017	21:47:24	217	2.4	10.90	25.1				
12/14/2017	21:47:54	394	2.4	10.90	26.3				
12/14/2017	21:48:24	484	3.1	10.89	27.9				
12/14/2017	21:48:54	304	2.0	10.88	29.3				
12/14/2017	21:49:24	291	3.2	10.88	30.4				
12/14/2017	21:49:54	216	3.3	10.88	32.1				
12/14/2017	21:50:24	217	3.3	10.88	33.7				
12/14/2017	21:50:54	190	3.3	10.86	35.4				
12/14/2017	21:51:24	234	3.3	10.86	37.0				
12/14/2017	21:51:54	186	3.3	10.85	38.7				
12/14/2017	21:52:24	353	3.3	10.85	40.4				
12/14/2017	21:52:54	195	3.3	10.85	42.0				
12/14/2017	21:53:24	95	3.0	10.86	43.6				
12/14/2017	21:53:54	117	2.5	10.86	45.1				
12/14/2017	21:54:24	466	3.0	10.86	46.5				
12/14/2017	21:54:54	316	2.8	10.86	47.9				
12/14/2017	21:55:24	278	2.5	10.86	49.2				
12/14/2017	21:55:54	438	2.7	10.86	50.5				
12/14/2017	21:56:24	126	2.8	10.86	51.9				
12/14/2017	21:56:54	397	2.7	10.86	53.2				
12/14/2017	21:57:24	378	2.9	10.86	54.6				
12/14/2017	21:57:54	257	2.9	10.85	56.1				
12/14/2017	21:58:24	380	3.0	10.84	57.6				
12/14/2017	21:58:54	130	2.9	10.84	59.0				
12/14/2017	21:59:24	247	3.0	10.84	60.5				
12/14/2017	21:59:54	148	3.0	10.83	62.0				
12/14/2017	22:00:24	262	3.1	10.83	63.5				
12/14/2017	22:00:54	274	3.1	10.78	65.1				
12/14/2017	22:01:54	49	0.2	10.88	68.0				
12/14/2017	22:01:58	30	0.0	10.88	68.0	End Spacer			
12/14/2017	22:02:00	25	0.0	10.88	68.0	Drop Bottom Plug			
12/14/2017	22:02:01	24	0.0	10.88	68.0	Reset Total, Vol = 69.48 bbl			
12/14/2017	22:02:24	14	0.0	10.88	68.0				
12/14/2017	22:02:54	11	0.0	10.88	68.0				
12/14/2017	22:03:24	7	0.0	10.88	68.0				
12/14/2017	22:03:54	7	0.0	10.88	68.0				
12/14/2017	22:04:24	-2	0.0	10.88	68.0				
12/14/2017	22:04:54	-4	0.0	10.88	68.0				
12/14/2017	22:05:24	-3	0.0	10.88	68.0				
12/14/2017	22:05:54	-3	0.0	10.88	68.0				
12/14/2017	22:06:24	-3	0.0	10.88	68.0				
12/14/2017	22:06:54	-5	0.0	10.88	68.0				
12/14/2017	22:07:24	52	2.0	11.89	68.2				

Well BUROUGH 2C-17HZ			Field WATTENBERG		Job Start Dec/14/2017	Customer ANADARKO	Job Number 2605288
Date	Time 24-hr clock	Treating Pressure PSI	Flow Rate B/M	Density LB/G	Volume BBL	Message	
12/14/2017	22:08:24	342	3.2	11.97	70.4		
12/14/2017	22:08:54	478	3.6	12.01	72.0		
12/14/2017	22:09:00	484	4.4	12.01	72.4	Start Cement Slurry	
12/14/2017	22:09:03	487	4.5	12.01	72.6	Start Mixing Lead Slurry	
12/14/2017	22:09:24	861	6.4	12.01	74.4		
12/14/2017	22:09:54	1283	8.2	12.01	77.8		
12/14/2017	22:10:24	1300	8.3	11.98	81.9		
12/14/2017	22:10:54	895	6.4	11.96	85.9		
12/14/2017	22:11:24	809	6.4	11.96	89.0		
12/14/2017	22:11:54	801	6.3	11.95	92.2		
12/14/2017	22:12:24	804	6.3	11.94	95.4		
12/14/2017	22:12:54	775	6.4	11.95	98.6		
12/14/2017	22:13:24	431	4.5	11.94	101.0		
12/14/2017	22:13:54	54	1.6	11.93	102.2		
12/14/2017	22:14:24	51	1.6	11.89	103.0		
12/14/2017	22:14:54	33	1.6	11.91	103.8		
12/14/2017	22:15:24	37	1.6	11.93	104.6		
12/14/2017	22:15:54	758	6.2	11.95	106.3		
12/14/2017	22:16:24	753	6.4	11.97	109.6		
12/14/2017	22:16:54	758	6.4	11.97	112.8		
12/14/2017	22:17:24	730	6.4	11.97	116.0		
12/14/2017	22:17:54	704	6.4	11.97	119.2		
12/14/2017	22:18:24	737	6.4	11.97	122.4		
12/14/2017	22:18:54	721	6.4	11.97	125.6		
12/14/2017	22:19:24	740	6.4	11.97	128.8		
12/14/2017	22:19:54	693	6.4	11.97	132.0		
12/14/2017	22:20:24	706	6.4	11.98	135.2		
12/14/2017	22:20:54	639	6.4	11.98	138.4		
12/14/2017	22:21:24	609	6.4	11.97	141.6		
12/14/2017	22:21:54	613	6.4	11.97	144.9		
12/14/2017	22:22:24	652	6.4	11.97	148.1		
12/14/2017	22:22:54	611	6.4	11.97	151.3		
12/14/2017	22:23:24	601	6.4	11.96	154.5		
12/14/2017	22:23:54	593	6.4	11.97	157.7		
12/14/2017	22:24:24	547	6.4	11.97	160.9		
12/14/2017	22:24:54	533	6.4	11.96	164.1		
12/14/2017	22:25:24	531	6.4	11.96	167.4		
12/14/2017	22:25:54	498	6.4	11.96	170.6		
12/14/2017	22:26:24	483	6.4	11.96	173.8		
12/14/2017	22:26:54	488	6.4	11.96	177.0		
12/14/2017	22:27:24	506	6.4	11.96	180.2		
12/14/2017	22:27:54	486	6.4	11.96	183.4		
12/14/2017	22:28:24	481	6.4	11.96	186.7		
12/14/2017	22:28:54	496	6.4	11.96	189.9		
12/14/2017	22:29:24	490	6.4	11.96	193.1		
12/14/2017	22:29:54	487	6.4	11.96	196.3		
12/14/2017	22:30:24	479	6.4	11.95	199.6		
12/14/2017	22:30:54	475	6.4	11.96	202.8		
12/14/2017	22:31:24	508	6.4	11.97	206.0		
12/14/2017	22:31:54	177	3.3	11.97	208.6		
12/14/2017	22:32:24	58	1.6	11.96	209.7		
12/14/2017	22:32:54	55	1.6	11.96	210.5		
12/14/2017	22:33:24	52	1.6	11.96	211.3		
12/14/2017	22:33:54	47	1.7	11.96	212.1		

Well			Field		Job Start		Customer		Job Number	
BUROUGH 2C-17HZ			WATTENBERG		Dec/14/2017		ANADARKO		2605288	
Date	Time 24-hr clock	Treating Pressure PSI	Flow Rate B/M	Density LB/G	Volume BBL	Message				
12/14/2017	22:34:24	55	1.7	11.99	212.9					
12/14/2017	22:34:54	79	2.1	11.98	213.8					
12/14/2017	22:35:24	81	2.1	12.01	214.9					
12/14/2017	22:35:54	80	2.1	12.01	216.0					
12/14/2017	22:36:54	80	2.1	12.00	218.1					
12/14/2017	22:37:24	79	2.1	12.02	219.1					
12/14/2017	22:37:54	-3	0.0	12.04	220.0					
12/14/2017	22:38:00	-4	0.0	12.04	220.0	End Lead Slurry				
12/14/2017	22:38:04	-5	0.0	12.04	220.0	Reset Total, Vol = 151.35 bbl				
12/14/2017	22:38:24	-6	0.0	12.04	220.0					
12/14/2017	22:38:54	-6	0.0	12.04	220.0					
12/14/2017	22:39:24	-9	0.0	12.04	220.0					
12/14/2017	22:39:54	90	2.2	12.65	220.3					
12/14/2017	22:40:16	89	2.1	13.34	221.1	Start Mixing Tail Slurry				
12/14/2017	22:40:24	66	2.0	13.39	221.4					
12/14/2017	22:40:54	123	2.1	13.39	222.4					
12/14/2017	22:41:24	545	6.4	13.38	224.7					
12/14/2017	22:41:54	556	6.4	13.39	227.9					
12/14/2017	22:42:24	559	6.4	13.40	231.1					
12/14/2017	22:42:54	535	6.4	13.44	234.4					
12/14/2017	22:43:24	525	6.5	13.43	237.6					
12/14/2017	22:43:54	545	6.5	13.44	240.8					
12/14/2017	22:44:24	546	6.4	13.44	244.0					
12/14/2017	22:44:54	548	6.5	13.44	247.2					
12/14/2017	22:45:24	530	6.5	13.44	250.5					
12/14/2017	22:45:54	547	6.5	13.43	253.7					
12/14/2017	22:46:24	549	6.5	13.43	256.9					
12/14/2017	22:46:54	539	6.5	13.43	260.1					
12/14/2017	22:47:24	536	6.4	13.43	263.4					
12/14/2017	22:47:54	526	6.5	13.43	266.6					
12/14/2017	22:48:24	539	6.4	13.45	269.8					
12/14/2017	22:48:54	524	6.5	13.44	273.0					
12/14/2017	22:49:24	540	6.5	13.43	276.3					
12/14/2017	22:49:54	533	6.4	13.43	279.5					
12/14/2017	22:50:24	529	6.5	13.43	282.7					
12/14/2017	22:50:54	542	6.4	13.43	285.8					
12/14/2017	22:51:24	558	6.5	13.43	289.2					
12/14/2017	22:51:54	528	6.5	13.43	292.4					
12/14/2017	22:52:24	548	6.5	13.44	295.6					
12/14/2017	22:52:54	554	6.5	13.44	298.8					
12/14/2017	22:53:24	557	6.5	13.45	302.1					
12/14/2017	22:53:54	543	6.5	13.45	305.3					
12/14/2017	22:54:24	554	6.5	13.45	308.5					
12/14/2017	22:54:54	559	6.4	13.45	311.7					
12/14/2017	22:55:24	528	6.5	13.45	315.0					
12/14/2017	22:55:54	541	6.4	13.45	318.2					
12/14/2017	22:56:24	532	6.5	13.45	321.4					
12/14/2017	22:56:54	518	6.4	13.45	324.6					
12/14/2017	22:57:24	539	6.5	13.45	327.9					
12/14/2017	22:57:54	538	6.5	13.45	331.1					
12/14/2017	22:58:24	524	6.5	13.45	334.3					
12/14/2017	22:58:54	530	6.4	13.45	337.6					
12/14/2017	22:59:24	536	6.4	13.44	340.8					
12/14/2017	22:59:54	537	6.5	13.44	344.0					

Well BUROUGH 2C-17HZ			Field WATTENBERG		Job Start Dec/14/2017	Customer ANADARKO	Job Number 2605288
Date	Time 24-hr clock	Treating Pressure PSI	Flow Rate B/M	Density LB/G	Volume BBL	Message	
12/14/2017	23:00:54	552	6.4	13.42	350.5		
12/14/2017	23:01:24	550	6.5	13.42	353.7		
12/14/2017	23:01:54	544	6.5	13.42	356.9		
12/14/2017	23:02:24	542	6.5	13.44	360.1		
12/14/2017	23:02:54	565	6.5	13.44	363.4		
12/14/2017	23:03:24	556	6.4	13.44	366.6		
12/14/2017	23:03:54	542	6.5	13.44	369.8		
12/14/2017	23:04:24	559	6.5	13.44	373.0		
12/14/2017	23:04:54	556	6.5	13.43	376.3		
12/14/2017	23:05:24	555	6.5	13.43	379.5		
12/14/2017	23:05:54	558	6.4	13.43	382.7		
12/14/2017	23:06:24	552	6.5	13.43	386.0		
12/14/2017	23:06:54	549	6.5	13.42	389.2		
12/14/2017	23:07:24	539	6.4	13.43	392.4		
12/14/2017	23:07:54	537	6.5	13.43	395.6		
12/14/2017	23:08:24	554	6.5	13.43	398.9		
12/14/2017	23:08:54	528	6.5	13.43	402.1		
12/14/2017	23:09:24	540	6.4	13.44	405.3		
12/14/2017	23:09:54	548	6.5	13.40	408.5		
12/14/2017	23:10:24	547	6.5	13.41	411.8		
12/14/2017	23:10:54	537	6.5	13.40	415.0		
12/14/2017	23:11:00	542	6.5	13.40	415.6	End Tail Slurry	
12/14/2017	23:11:12	565	6.5	13.40	416.9	End Cement Slurry	
12/14/2017	23:11:54	540	6.5	13.37	421.5		
12/14/2017	23:12:05	425	6.6	13.42	422.6	Reset Total, Vol = 201.10 bbl	
12/14/2017	23:12:07	13	0.0	14.64	422.8	wash lines	
12/14/2017	23:12:24	27	0.0	13.40	422.8		
12/14/2017	23:12:54	12	0.0	13.82	422.8		
12/14/2017	23:13:24	11	0.0	13.77	422.8		
12/14/2017	23:13:54	28	0.0	13.13	422.8		
12/14/2017	23:14:24	14	0.0	13.64	422.9		
12/14/2017	23:14:54	12	0.0	13.41	422.9		
12/14/2017	23:15:24	22	0.0	10.47	422.9		
12/14/2017	23:15:54	0	0.0	9.84	422.9		
12/14/2017	23:16:24	0	0.0	9.37	422.9		
12/14/2017	23:16:54	11	0.0	9.11	422.9		
12/14/2017	23:17:24	-0	0.0	9.02	422.9		
12/14/2017	23:17:54	7	0.0	8.75	422.9		
12/14/2017	23:18:24	18	0.2	8.36	423.0		
12/14/2017	23:18:54	10	0.0	9.36	423.1		
12/14/2017	23:19:24	11	0.0	9.09	423.2		
12/14/2017	23:19:54	2	0.0	9.62	423.2		
12/14/2017	23:20:24	41	0.8	8.80	423.3		
12/14/2017	23:20:54	41	1.5	9.01	423.8		
12/14/2017	23:21:24	47	2.5	9.36	424.8		
12/14/2017	23:21:54	70	2.5	9.36	426.0		
12/14/2017	23:22:24	151	3.4	9.38	427.7		
12/14/2017	23:22:54	163	3.4	9.35	429.4		
12/14/2017	23:23:24	153	3.4	9.31	431.1		
12/14/2017	23:23:54	151	3.5	9.19	432.8		
12/14/2017	23:24:24	145	3.4	8.95	434.6		
12/14/2017	23:24:54	100	3.2	8.60	436.3		
12/14/2017	23:25:24	121	3.4	8.49	438.1		
12/14/2017	23:25:54	116	3.5	8.52	439.7		

Well			Field		Job Start		Customer		Job Number	
BUROUGH 2C-17HZ			WATTENBERG		Dec/14/2017		ANADARKO		2605288	
Date	Time 24-hr clock	Treating Pressure PSI		Flow Rate B/M	Density LB/G		Volume BBL		Message	
12/14/2017	23:26:54	158		3.5	8.47		443.2			
12/14/2017	23:27:24	5		0.0	8.99		443.9			
12/14/2017	23:27:54	4		0.2	8.46		444.0			
12/14/2017	23:28:24	3		0.0	8.47		444.0			
12/14/2017	23:28:54	4		0.0	8.37		444.0			
12/14/2017	23:29:24	3		0.0	7.79		444.1			
12/14/2017	23:29:54	3		0.0	8.54		444.1			
12/14/2017	23:30:24	4		0.0	8.54		444.1			
12/14/2017	23:30:54	4		0.0	8.53		444.1			
12/14/2017	23:31:24	3		0.0	8.49		444.1			
12/14/2017	23:31:54	4		0.0	8.45		444.1			
12/14/2017	23:32:24	3		0.0	8.38		444.1			
12/14/2017	23:32:54	3		0.0	8.42		444.1			
12/14/2017	23:33:24	64		1.7	8.33		444.1			
12/14/2017	23:33:54	59		2.8	8.45		445.1			
12/14/2017	23:34:24	57		2.9	8.46		446.5			
12/14/2017	23:34:53	94		3.4	8.46		448.0		Reset Total, Vol = 25.36 bbl	
12/14/2017	23:34:54	86		3.4	8.47		448.0			
12/14/2017	23:34:55	144		3.7	8.46		448.1		Drop Top Plug	
12/14/2017	23:34:56	143		4.1	8.47		448.2		Start Displacement	
12/14/2017	23:35:24	274		6.4	8.47		450.6			
12/14/2017	23:35:54	264		6.5	8.47		453.8			
12/14/2017	23:36:24	439		8.3	8.47		457.4			
12/14/2017	23:36:54	432		8.3	8.47		461.5			
12/14/2017	23:37:24	422		8.3	8.47		465.7			
12/14/2017	23:37:54	441		8.3	8.47		469.9			
12/14/2017	23:38:24	419		8.3	8.47		474.0			
12/14/2017	23:38:54	433		8.4	8.47		478.2			
12/14/2017	23:39:24	432		8.4	8.47		482.4			
12/14/2017	23:39:54	427		8.3	8.47		486.5			
12/14/2017	23:40:24	422		8.3	8.47		490.7			
12/14/2017	23:40:54	866		8.3	8.46		494.9			
12/14/2017	23:41:24	934		8.3	8.47		499.0			
12/14/2017	23:41:54	945		8.3	8.46		503.2			
12/14/2017	23:42:24	969		8.3	8.46		507.3			
12/14/2017	23:42:54	1028		8.3	8.46		511.5			
12/14/2017	23:43:24	1053		8.2	8.46		515.6			
12/14/2017	23:43:54	1142		8.3	8.46		519.7			
12/14/2017	23:44:24	1172		8.3	8.46		523.9			
12/14/2017	23:44:54	1212		8.3	8.46		528.0			
12/14/2017	23:45:24	1267		8.3	8.47		532.1			
12/14/2017	23:45:54	1295		8.3	8.46		536.3			
12/14/2017	23:46:24	1356		8.2	8.46		540.4			
12/14/2017	23:46:54	1419		8.3	8.46		544.5			
12/14/2017	23:47:24	1456		8.2	8.46		548.7			
12/14/2017	23:47:54	1522		8.2	8.46		552.8			
12/14/2017	23:48:24	1558		8.2	8.46		556.9			
12/14/2017	23:48:54	1635		8.2	8.46		561.0			
12/14/2017	23:49:24	1669		8.2	8.46		565.1			
12/14/2017	23:49:54	1736		8.2	8.46		569.3			
12/14/2017	23:50:24	1800		8.2	8.46		573.4			
12/14/2017	23:50:54	1858		8.2	8.46		577.5			
12/14/2017	23:51:24	1907		8.2	8.46		581.6			
12/14/2017	23:51:54	1988		8.2	8.46		585.7			



Well			Field	Job Start		Customer		Job Number	
BUROUGH 2C-17HZ			WATTENBERG		Dec/14/2017		ANADARKO		2605288
Date	Time 24-hr clock	Treating Pressure PSI	Flow Rate B/M	Density LB/G	Volume BBL	Message			
12/14/2017	23:52:54	2089	8.2	8.47	593.9				
12/14/2017	23:53:24	2141	8.2	8.47	598.0				
12/14/2017	23:53:54	2214	8.2	8.47	602.1				
12/14/2017	23:54:24	2280	8.2	8.46	606.1				
12/14/2017	23:54:54	2363	8.2	8.46	610.2				
12/14/2017	23:55:24	2432	8.2	8.46	614.3				
12/14/2017	23:55:54	2475	8.1	8.46	618.4				
12/14/2017	23:56:24	2532	8.1	8.46	622.5				
12/14/2017	23:56:54	2570	8.2	8.46	626.5				
12/14/2017	23:57:24	2610	8.1	8.46	630.6				
12/14/2017	23:57:54	2637	8.1	8.46	634.7				
12/14/2017	23:58:24	2677	8.2	8.46	638.7				
12/14/2017	23:58:54	2668	8.2	8.46	642.8				
12/14/2017	23:59:24	2697	8.1	8.46	646.9				
12/14/2017	23:59:54	2722	8.1	8.46	651.0				
12/15/2017	00:00:24	2708	8.2	8.46	655.0				
12/15/2017	00:01:24	2785	8.1	8.46	663.2				
12/15/2017	00:01:54	2818	8.1	8.46	667.2				
12/15/2017	00:02:24	2814	8.1	8.46	671.3				
12/15/2017	00:02:54	2863	8.1	8.46	675.3				
12/15/2017	00:03:24	2877	8.2	8.46	679.4				
12/15/2017	00:03:54	2859	8.1	8.46	683.5				
12/15/2017	00:04:24	2873	8.1	8.46	687.5				
12/15/2017	00:04:54	2897	8.1	8.46	691.6				
12/15/2017	00:05:24	2885	8.1	8.46	695.7				
12/15/2017	00:05:54	2918	8.1	8.46	699.7				
12/15/2017	00:06:24	2957	8.1	8.46	703.8				
12/15/2017	00:06:54	2705	6.5	8.46	707.8				
12/15/2017	00:07:24	2588	6.3	8.46	711.0				
12/15/2017	00:07:54	2597	6.3	8.46	714.1				
12/15/2017	00:08:24	2291	4.5	8.46	716.7				
12/15/2017	00:08:54	2248	4.5	8.46	718.9				
12/15/2017	00:09:24	2310	4.5	8.46	721.2				
12/15/2017	00:09:54	2323	4.5	8.46	723.4				
12/15/2017	00:10:24	2324	4.5	8.46	725.7				
12/15/2017	00:10:54	2347	4.5	8.46	727.9				
12/15/2017	00:11:24	2019	2.3	8.46	729.2				
12/15/2017	00:11:54	2039	2.3	8.46	730.4				
12/15/2017	00:12:24	2029	2.3	8.46	731.5				
12/15/2017	00:12:54	2349	2.1	8.46	732.7				
12/15/2017	00:13:24	2537	0.0	8.46	732.8				
12/15/2017	00:13:54	2536	0.0	8.46	732.8				
12/15/2017	00:14:24	2563	0.0	8.46	732.8				
12/15/2017	00:14:44	2574	0.0	8.46	732.8	Bump Top Plug			
12/15/2017	00:14:45	2578	0.0	8.46	732.8	End Displacement			
12/15/2017	00:14:48	2585	0.0	8.46	732.8	Reset Total, Vol = 284.81 bbl			
12/15/2017	00:14:54	2577	0.0	8.46	732.8				
12/15/2017	00:15:24	2646	0.7	8.46	732.8				
12/15/2017	00:15:54	2900	0.0	8.46	733.1				
12/15/2017	00:16:24	2911	0.0	8.46	733.1				
12/15/2017	00:16:54	2924	0.0	8.46	733.1				
12/15/2017	00:17:24	2938	0.0	8.46	733.1				
12/15/2017	00:17:54	2953	0.0	8.47	733.1				
12/15/2017	00:18:24	2959	0.0	8.47	733.1				

Well			Field		Job Start	Customer		Job Number
BUROUGH 2C-17HZ			WATTENBERG		Dec/14/2017	ANADARKO		2605288
Date	Time 24-hr clock	Treating Pressure PSI	Flow Rate B/M	Density LB/G	Volume BBL	Message		
12/15/2017	00:19:24	2975	0.0	8.47	733.1			
12/15/2017	00:19:54	2282	0.0	8.47	733.1			
12/15/2017	00:20:24	6	0.3	8.47	733.1			
12/15/2017	00:20:39	5	0.1	8.47	733.3	Pressure Test Lines		
12/15/2017	00:20:54	6	0.0	8.47	733.3			
12/15/2017	00:21:24	10	0.0	8.47	733.3			
12/15/2017	00:21:54	73	0.7	8.47	733.3			
12/15/2017	00:22:24	1234	2.3	8.47	734.4			
12/15/2017	00:22:54	2400	2.3	8.47	735.5			
12/15/2017	00:23:24	3570	2.3	8.47	736.7			
12/15/2017	00:23:54	2470	2.3	8.47	737.8			
12/15/2017	00:24:24	2187	2.3	8.47	739.0			
12/15/2017	00:24:54	2203	2.3	8.48	740.1			
12/15/2017	00:25:24	2183	2.3	8.48	741.2			
12/15/2017	00:25:54	2198	2.3	8.48	742.4			
12/15/2017	00:26:08	1968	0.0	8.48	742.7	open tool		
12/15/2017	00:26:24	1861	0.0	8.48	742.7			
12/15/2017	00:26:35	1347	0.0	8.48	742.7	Reset Total, Vol = 9.93 bbl		
12/15/2017	00:26:54	5	0.0	8.48	742.7			
12/15/2017	00:27:24	5	0.0	8.48	742.7			
12/15/2017	00:27:54	5	0.0	8.48	742.7			
12/15/2017	00:28:24	5	0.0	8.48	742.7			
12/15/2017	00:28:54	5	0.0	8.48	742.7			

### Post Job Summary

Average Pump Rates, bbl/min					Volume of Fluid Injected, bbl					
Slurry 4.9	N2	Mud	Maximum Rate 8.4	Total Slurry 350.0	Mud 0.0	Spacer 60.2	N2			
Treating Pressure Summary, psi					Breakdown Fluid					
Maximum 6225	Final 5	Average 861	Bump Plug to 2700	Breakdown	Type	Volume bbl	Density lb/gal			
Avg. N2 Percent %		Designed Slurry Volume 350.0 bbl		Displacement 284.7 bbl		Cement Circulated to Surface? <input type="checkbox"/>		Volume bbl		
						Washed Thru Perfs <input type="checkbox"/>		To ft		
Customer or Authorized Representative JASON LUAB			Schlumberger Supervisor NORM HASLAUER			Circulation Lost <input type="checkbox"/>	Job Completed <input checked="" type="checkbox"/>			
						-	-			