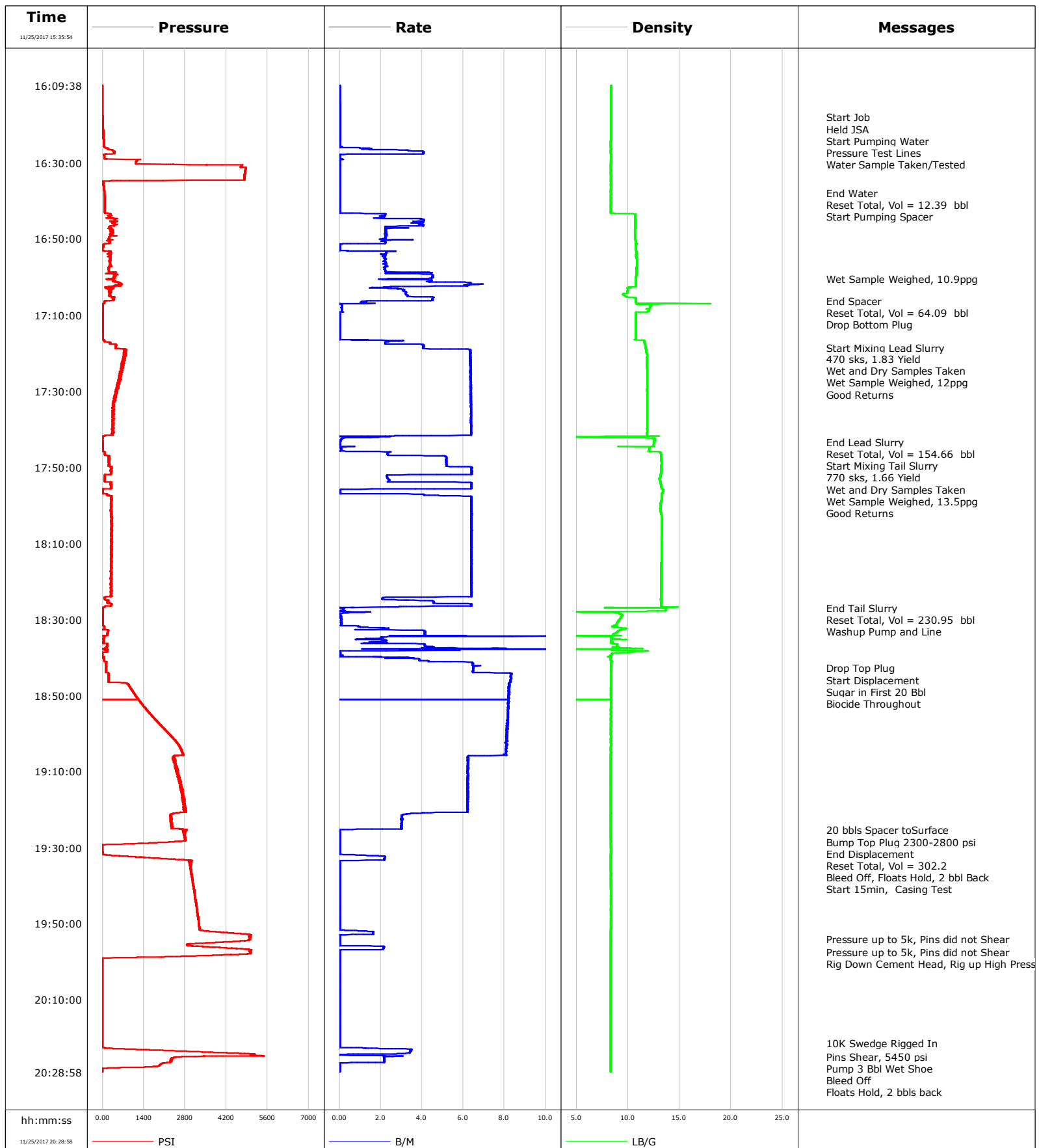


Well Burough 17N-17HZ
Field Wattenberg
Engineer Ryan Drilling/Chad Perry
Country United States

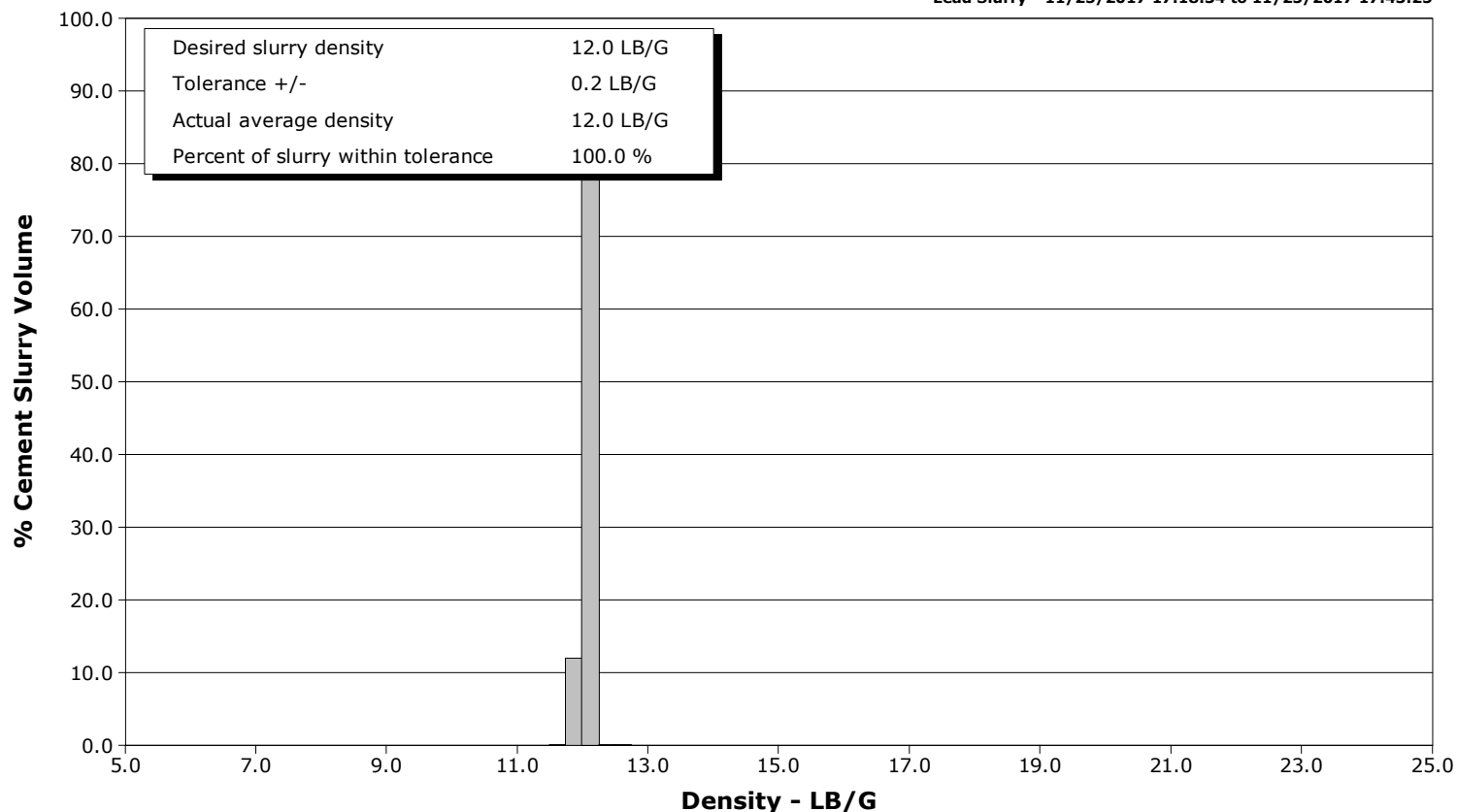
Client Anadarko
SIR No. D8WD-00820
Job Type 5.5" Production
Job Date 11-25-2017



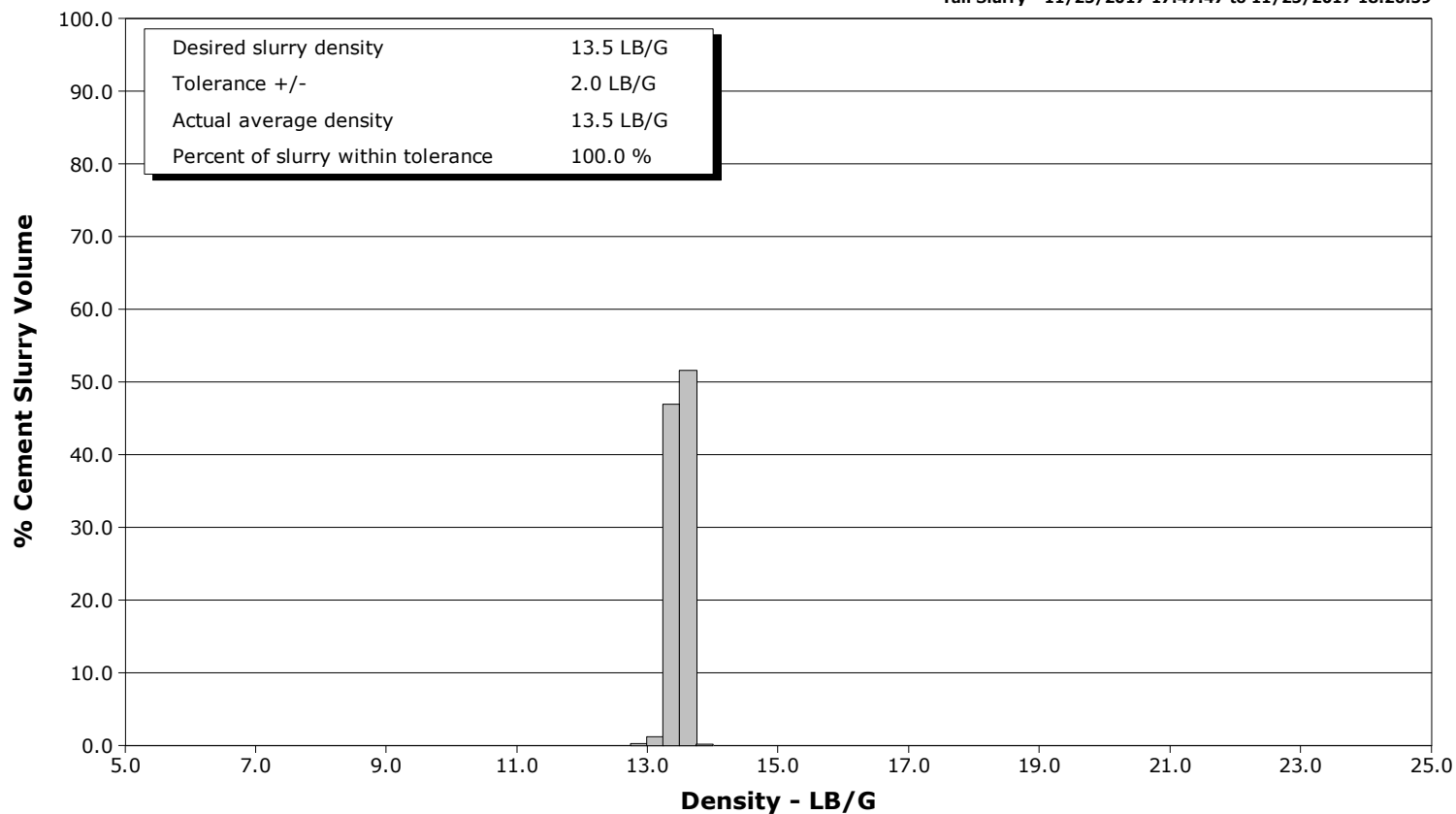
Well Burough 17N-17HZ
Field Wattenberg
Engineer Ryan Drilling/Chad Perry
Country United States

Client Anadarko
SIR No. D8WD-00820
Job Type 5.5" Production
Job Date 11-25-2017

Lead Slurry - 11/25/2017 17:18:34 to 11/25/2017 17:43:25



Tail Slurry - 11/25/2017 17:47:47 to 11/25/2017 18:26:59



Cementing Service Report

				Customer Anadarko				Job Number D8WD-00820			
Well Burough 17N-17HZ			Location (legal) CWY			Schlumberger Location CWY			Job Start Nov/25/2017		
Field Wattenberg		Formation Name/Type Shale		Deviation 90 deg		Bit Size 7.9 in		Well MD 13002.0 ft		Well TVD 7394.0 ft	
County Weld		State/Province Colorado		BHP psi		BHST 230 degF		BHCT 210 degF		Pore Press. Gradient lb/gal	
Well Master		API/UWI									
Rig Name Precision 564		Drilled For Oil & Gas		Service Via Land		Casing/ Liner					
						Depth, ft		Size, in		Weight, lb/ft	
										Grade	
										Thread	
Offshore Zone		Well Class New		Well Type Development		1907.0		9.6		36.0	
						13002.0		5.5		17.0	
										j55	
										p110	
										lrc	
Drilling Fluid Type OBM		Max. Density 9.30 lb/gal		Plastic Viscosity 11.000 cP		Tubing/Drill Pipe					
						T/D		Depth, ft		Size, in	
										Weight, lb/ft	
										Grade	
										Thread	
Service Line Cementing		Job Type 5.5" Production									
Max. Allowed Tub. Press psi		Max. Allowed Ann. Press psi		WH Connection Double Cement head		Perforations/Open Hole					
						Top, ft		Bottom, ft		shot/ft	
										No. of Shots	
										Total Interval	
						ft		ft		ft	
						ft		ft		Diameter	
						ft		ft		in	
						Treat Down Casing		Displacement 302.2 bbl		Packer Type	
										Packer Depth	
										ft	
						Tubing Vol. bbl		Casing Vol. bbl		Annular Vol. bbl	
										Openhole Vol. bbl	
Casing/Tubing Secured <input checked="" type="checkbox"/>		1 Hole Vol. Circulated prior to Cement <input checked="" type="checkbox"/>				Casing Tools		Squeeze Job			
Lift Pressure 2300 psi						Shoe Type Float		Squeeze Type			
Pipe Rotated <input type="checkbox"/>		Pipe Reciprocated <input type="checkbox"/>				Shoe Depth 13002.0 ft		Tool Type			
No. Centralizers		Top Plugs 1		Bottom Plugs 1		Stage Tool Type		Tool Depth ft			
Cement Head Type Double						Stage Tool Depth ft		Tail Pipe Size in			
Job Scheduled For Nov/25/2017 14:00		Arrived on Location Nov/25/2017 14:30		Leave Location Nov/25/2017 22:00		Collar Type Float		Tail Pipe Depth ft			
						Collar Depth 13000.0 ft		Sqz. Total Vol. bbl			
Date	Time 24-hr clock	Treating Pressure PSI	Flow Rate B/M	Density LB/G	Volume BBL	Message					
11/25/2017	15:58:54	-7	0.0	8.38	1.7	Started Acquisition					
11/25/2017	15:59:54	-7	0.0	8.38	1.7						
11/25/2017	16:00:54	-7	0.0	8.39	1.8						
11/25/2017	16:01:54	-7	0.0	8.38	1.8						
11/25/2017	16:02:54	-6	0.0	8.36	1.8						
11/25/2017	16:03:54	-7	0.0	8.36	1.8						
11/25/2017	16:04:54	-7	0.0	8.36	1.8						
11/25/2017	16:05:54	-7	0.0	8.37	1.8						
11/25/2017	16:06:54	-7	0.0	8.37	1.8						
11/25/2017	16:07:54	-7	0.0	8.36	1.8						
11/25/2017	16:08:54	-7	0.0	8.39	1.8						
11/25/2017	16:09:54	-7	0.0	8.38	1.8						
11/25/2017	16:10:54	-7	0.0	8.38	0.0						
11/25/2017	16:11:54	-7	0.0	8.38	0.0						
11/25/2017	16:12:54	-11	0.0	8.37	0.0						
11/25/2017	16:13:54	-12	0.0	8.37	0.0						
11/25/2017	16:14:54	-12	0.0	8.37	0.0						
11/25/2017	16:15:54	-12	0.0	8.37	0.1						
11/25/2017	16:16:54	-2	0.0	8.36	0.1						
11/25/2017	16:17:54	1	0.0	8.36	0.1						
11/25/2017	16:17:59	1	0.0	8.36	0.1	Start Job					

Well			Field		Job Start		Customer		Job Number	
Burough 17N-17HZ			Wattenberg		Nov/25/2017		Anadarko		D8WD-00820	
Date	Time 24-hr clock	Treating Pressure PSI	Flow Rate B/M	Density LB/G	Volume BBL	Message				
11/25/2017	16:18:03	1	0.0	8.36	0.1	Start Pumping Water				
11/25/2017	16:18:07	2	0.0	8.36	0.2	Pressure Test Lines				
11/25/2017	16:18:08	1	0.0	8.36	0.2	Water Sample Taken/Tested				
11/25/2017	16:18:54	5	0.0	8.36	0.2					
11/25/2017	16:19:54	9	0.0	8.36	0.2					
11/25/2017	16:20:54	15	0.0	8.36	0.2					
11/25/2017	16:21:54	20	0.0	8.36	0.3					
11/25/2017	16:22:54	27	0.0	8.36	0.0					
11/25/2017	16:23:54	35	0.0	8.36	0.1					
11/25/2017	16:24:54	44	0.0	8.35	0.0					
11/25/2017	16:25:54	53	0.0	8.35	0.0					
11/25/2017	16:26:54	386	3.9	8.35	1.8					
11/25/2017	16:27:54	40	0.0	8.36	5.1					
11/25/2017	16:28:54	56	0.0	8.35	5.1					
11/25/2017	16:29:54	1132	0.0	8.35	5.2					
11/25/2017	16:30:54	4705	0.0	8.35	5.2					
11/25/2017	16:31:54	4840	0.0	8.35	5.2					
11/25/2017	16:32:54	4824	0.0	8.35	5.2					
11/25/2017	16:33:54	4813	0.0	8.35	5.2					
11/25/2017	16:34:54	-12	0.0	8.35	5.2					
11/25/2017	16:35:54	33	0.0	8.35	5.2					
11/25/2017	16:36:54	46	0.0	8.35	5.2					
11/25/2017	16:37:51	58	0.0	8.35	5.2	End Water				
11/25/2017	16:37:53	58	0.0	8.35	5.2	Reset Total, Vol = 12.39 bbl				
11/25/2017	16:37:54	58	0.0	8.35	5.2					
11/25/2017	16:37:55	58	0.0	8.35	5.2	Start Pumping Spacer				
11/25/2017	16:38:54	70	0.0	8.35	5.2					
11/25/2017	16:39:54	72	0.0	8.35	5.2					
11/25/2017	16:40:54	71	0.0	8.35	5.2					
11/25/2017	16:41:54	72	0.0	8.35	5.2					
11/25/2017	16:42:54	72	0.0	8.35	5.3					
11/25/2017	16:43:54	305	2.1	10.71	6.6					
11/25/2017	16:44:54	428	4.1	10.72	9.2					
11/25/2017	16:45:54	323	3.9	10.72	13.1					
11/25/2017	16:46:54	234	2.2	10.71	16.7					
11/25/2017	16:47:54	341	2.2	10.68	19.0					
11/25/2017	16:48:54	313	2.2	10.69	21.2					
11/25/2017	16:49:54	233	2.2	10.69	23.5					
11/25/2017	16:50:54	251	2.2	10.78	25.7					
11/25/2017	16:51:54	29	0.0	10.78	26.5					
11/25/2017	16:52:54	-1	0.0	10.78	26.5					
11/25/2017	16:53:54	246	2.2	10.79	28.2					
11/25/2017	16:54:54	245	2.2	10.82	30.4					
11/25/2017	16:55:54	277	2.1	10.85	32.6					
11/25/2017	16:57:54	212	2.2	10.81	37.1					
11/25/2017	16:58:54	320	4.1	10.79	39.7					
11/25/2017	16:59:54	376	4.5	10.78	43.6					
11/25/2017	17:00:30	202	2.3	10.78	46.1	Wet Sample Weighed, 10.9ppg				
11/25/2017	17:00:54	410	4.5	10.78	47.5					
11/25/2017	17:01:54	647	6.9	10.78	52.9					
11/25/2017	17:02:54	288	2.1	9.98	57.3					
11/25/2017	17:03:54	245	3.2	9.97	60.3					
11/25/2017	17:04:54	212	3.3	9.70	63.5					
11/25/2017	17:05:54	385	4.5	10.77	67.7					

Well			Field	Job Start		Customer	Job Number	
Burough 17N-17HZ			Wattenberg		Nov/25/2017		Anadarko	D8WD-00820
Date	Time 24-hr clock	Treating Pressure PSI	Flow Rate B/M	Density LB/G	Volume BBL	Message		
11/25/2017	17:06:15	122	2.3	10.77	69.3	Reset Total, Vol = 64.09 bbl		
11/25/2017	17:06:54	66	1.0	11.06	70.1			
11/25/2017	17:07:54	6	0.1	12.17	70.3			
11/25/2017	17:08:54	7	0.1	11.99	70.4			
11/25/2017	17:09:54	6	0.0	10.76	70.4			
11/25/2017	17:10:31	4	0.0	10.76	70.4	Drop Bottom Plug		
11/25/2017	17:10:54	5	0.0	10.76	70.4			
11/25/2017	17:11:54	5	0.0	10.76	70.4			
11/25/2017	17:12:54	5	0.0	10.76	70.4			
11/25/2017	17:13:54	5	0.0	10.76	70.4			
11/25/2017	17:14:54	5	0.0	10.76	70.4			
11/25/2017	17:15:54	4	0.0	10.76	70.4			
11/25/2017	17:16:54	77	2.5	11.56	71.3			
11/25/2017	17:17:54	460	4.1	11.68	73.9			
11/25/2017	17:18:34	455	4.1	11.74	76.7	Start Mixing Lead Slurry		
11/25/2017	17:18:54	699	5.4	11.75	78.0			
11/25/2017	17:19:54	727	6.3	11.80	84.3			
11/25/2017	17:20:54	703	6.4	11.85	90.7			
11/25/2017	17:21:35	680	6.3	11.82	95.0	470 sks, 1.83 Yield		
11/25/2017	17:21:36	746	6.3	11.82	95.1	Wet Sample Weighed, 12ppg		
11/25/2017	17:21:37	680	6.3	11.81	95.2	Good Returns		
11/25/2017	17:21:54	688	6.3	11.81	97.0			
11/25/2017	17:22:54	636	6.3	11.83	103.4			
11/25/2017	17:23:54	639	6.4	11.84	109.7			
11/25/2017	17:24:54	590	6.3	11.85	116.1			
11/25/2017	17:25:54	566	6.3	11.86	122.4			
11/25/2017	17:26:54	610	6.4	11.86	128.8			
11/25/2017	17:27:54	529	6.4	11.85	135.1			
11/25/2017	17:28:54	479	6.3	11.85	141.5			
11/25/2017	17:29:54	470	6.4	11.84	147.8			
11/25/2017	17:30:54	424	6.4	11.87	154.2			
11/25/2017	17:32:54	373	6.4	11.88	166.9			
11/25/2017	17:33:54	338	6.4	11.87	173.3			
11/25/2017	17:34:54	341	6.4	11.87	179.7			
11/25/2017	17:35:54	356	6.4	11.86	186.0			
11/25/2017	17:36:54	338	6.4	11.87	192.4			
11/25/2017	17:37:54	336	6.4	11.87	198.8			
11/25/2017	17:38:54	326	6.4	11.85	205.1			
11/25/2017	17:39:54	319	6.4	11.84	211.5			
11/25/2017	17:40:54	364	6.4	11.85	217.9			
11/25/2017	17:41:54	7	0.0	7.96	223.4			
11/25/2017	17:42:54	-1	0.1	12.59	224.0			
11/25/2017	17:43:25	0	0.0	12.54	224.0	End Lead Slurry		
11/25/2017	17:43:26	-0	0.0	12.54	224.0	Reset Total, Vol = 154.66 bbl		
11/25/2017	17:43:54	0	0.0	12.52	224.0			
11/25/2017	17:44:54	1	0.1	12.09	224.1			
11/25/2017	17:45:54	62	2.0	12.97	224.2			
11/25/2017	17:46:54	149	3.7	13.21	226.6			
11/25/2017	17:47:47	216	5.2	13.20	231.0	Start Mixing Tail Slurry		
11/25/2017	17:47:54	213	5.2	13.21	231.6			
11/25/2017	17:48:54	210	5.2	13.25	236.8			
11/25/2017	17:49:49	307	5.8	13.22	241.5	770 sks, 1.66 Yield		
11/25/2017	17:49:50	328	5.9	13.22	241.6	Wet Sample Weighed, 13.5ppg		
11/25/2017	17:49:54	306	6.3	13.22	242.0			

Well			Field		Job Start		Customer		Job Number	
Burough 17N-17HZ			Wattenberg		Nov/25/2017		Anadarko		D8WD-00820	
Date	Time 24-hr clock	Treating Pressure PSI	Flow Rate B/M	Density LB/G	Volume BBL	Message				
11/25/2017	17:51:54	205	6.4	13.18	254.8					
11/25/2017	17:52:54	70	2.3	13.08	257.5					
11/25/2017	17:53:54	276	4.4	13.16	259.9					
11/25/2017	17:54:54	286	6.4	13.20	266.2					
11/25/2017	17:55:54	8	0.0	13.39	271.5					
11/25/2017	17:56:54	8	0.0	13.27	271.5					
11/25/2017	17:57:54	320	6.4	13.29	276.0					
11/25/2017	17:58:54	318	6.4	13.21	282.4					
11/25/2017	17:59:54	292	6.4	13.16	288.8					
11/25/2017	18:00:54	296	6.4	13.13	295.2					
11/25/2017	18:01:54	306	6.4	13.19	301.6					
11/25/2017	18:02:54	315	6.4	13.26	308.0					
11/25/2017	18:03:54	315	6.4	13.30	314.4					
11/25/2017	18:04:54	346	6.4	13.31	320.8					
11/25/2017	18:05:54	313	6.4	13.30	327.2					
11/25/2017	18:07:54	328	6.4	13.28	340.0					
11/25/2017	18:08:54	303	6.4	13.27	346.4					
11/25/2017	18:09:54	287	6.4	13.26	352.8					
11/25/2017	18:10:54	308	6.4	13.25	359.1					
11/25/2017	18:11:54	304	6.4	13.24	365.5					
11/25/2017	18:12:54	285	6.4	13.24	371.9					
11/25/2017	18:13:54	295	6.4	13.24	378.3					
11/25/2017	18:14:54	297	6.4	13.23	384.7					
11/25/2017	18:15:54	287	6.4	13.23	391.1					
11/25/2017	18:16:54	296	6.4	13.22	397.5					
11/25/2017	18:17:54	300	6.4	13.20	403.9					
11/25/2017	18:18:54	295	6.4	13.20	410.3					
11/25/2017	18:19:54	280	6.4	13.21	416.7					
11/25/2017	18:20:54	282	6.4	13.21	423.1					
11/25/2017	18:21:54	285	6.4	13.21	429.5					
11/25/2017	18:22:54	290	6.4	13.20	435.9					
11/25/2017	18:23:54	310	6.4	13.23	442.3					
11/25/2017	18:24:54	104	3.1	13.21	445.5					
11/25/2017	18:25:54	306	6.3	13.21	450.0					
11/25/2017	18:26:54	5	0.0	8.38	454.9					
11/25/2017	18:26:59	4	0.2	9.70	454.9	End Tail Slurry				
11/25/2017	18:27:00	3	0.2	10.93	454.9	Reset Total, Vol = 230.95 bbl				
11/25/2017	18:27:03	5	0.2	13.33	454.9	Washup Pump and Line				
11/25/2017	18:27:54	5	0.0	11.11	455.1					
11/25/2017	18:28:54	7	0.0	9.46	455.4					
11/25/2017	18:29:54	7	0.1	9.21	455.5					
11/25/2017	18:30:54	7	0.1	8.94	455.6					
11/25/2017	18:31:54	53	0.9	8.47	455.8					
11/25/2017	18:32:54	195	4.1	9.19	457.8					
11/25/2017	18:33:54	167	4.1	8.57	461.9					
11/25/2017	18:34:54	41	2.1	8.39	465.7					
11/25/2017	18:35:54	18	1.5	8.51	467.5					
11/25/2017	18:36:54	160	4.2	8.96	470.6					
11/25/2017	18:37:54	139	6.9	8.02	476.2					
11/25/2017	18:38:54	-3	0.1	8.51	477.6					
11/25/2017	18:39:54	48	2.4	8.33	477.8					
11/25/2017	18:40:54	53	4.3	8.40	481.4					
11/25/2017	18:42:48	117	6.5	8.35	493.2	Drop Top Plug				
11/25/2017	18:42:49	110	6.5	8.35	493.3	Start Displacement				

Well			Field	Job Start		Customer		Job Number	
Burough 17N-17HZ			Wattenberg		Nov/25/2017		Anadarko		D8WD-00820
Date	Time 24-hr clock	Treating Pressure PSI	Flow Rate B/M	Density LB/G	Volume BBL	Message			
11/25/2017	18:42:54	124	6.5	8.35	493.8				
11/25/2017	18:43:54	112	6.5	8.35	500.3				
11/25/2017	18:44:54	207	8.3	8.36	508.3				
11/25/2017	18:45:54	203	8.3	8.35	516.7				
11/25/2017	18:46:54	847	8.2	8.35	524.9				
11/25/2017	18:47:54	958	8.2	8.35	533.2				
11/25/2017	18:48:54	1035	8.2	8.35	541.4				
11/25/2017	18:49:54	1117	8.2	8.35	549.6				
11/25/2017	18:50:54	1197	8.2	8.35	557.8				
11/25/2017	18:51:54	1304	8.2	8.37	566.0				
11/25/2017	18:52:54	1398	8.2	8.35	574.2				
11/25/2017	18:53:54	1514	8.2	8.35	582.3				
11/25/2017	18:54:54	1635	8.2	8.35	590.5				
11/25/2017	18:55:54	1738	8.2	8.35	598.7				
11/25/2017	18:56:54	1881	8.2	8.35	606.8				
11/25/2017	18:57:54	1986	8.1	8.35	614.9				
11/25/2017	18:58:54	2124	8.1	8.35	623.1				
11/25/2017	18:59:54	2222	8.1	8.35	631.2				
11/25/2017	19:00:54	2361	8.1	8.35	639.3				
11/25/2017	19:01:54	2461	8.1	8.35	647.4				
11/25/2017	19:02:54	2590	8.1	8.35	655.5				
11/25/2017	19:03:54	2660	8.1	8.35	663.6				
11/25/2017	19:04:54	2713	8.1	8.36	671.7				
11/25/2017	19:05:54	2406	6.3	8.35	679.5				
11/25/2017	19:06:54	2415	6.2	8.35	685.8				
11/25/2017	19:07:54	2490	6.2	8.35	692.0				
11/25/2017	19:08:54	2469	6.2	8.35	698.2				
11/25/2017	19:09:54	2558	6.2	8.35	704.5				
11/25/2017	19:10:54	2587	6.2	8.35	710.7				
11/25/2017	19:11:54	2571	6.2	8.35	716.9				
11/25/2017	19:12:54	2656	6.2	8.35	723.1				
11/25/2017	19:13:54	2693	6.2	8.35	729.3				
11/25/2017	19:14:54	2714	6.2	8.35	735.5				
11/25/2017	19:15:54	2742	6.2	8.35	741.8				
11/25/2017	19:17:54	2754	6.2	8.35	754.2				
11/25/2017	19:18:54	2810	6.2	8.35	760.4				
11/25/2017	19:19:54	2765	6.2	8.35	766.6				
11/25/2017	19:20:54	2424	4.0	8.35	772.5				
11/25/2017	19:21:54	2316	3.0	8.35	775.7				
11/25/2017	19:22:54	2317	3.0	8.35	778.7				
11/25/2017	19:23:54	2370	3.0	8.35	781.7				
11/25/2017	19:24:54	2335	3.0	8.35	784.7				
11/25/2017	19:25:24	2761	0.0	8.35	785.6	20 bbls Spacer toSurface			
11/25/2017	19:25:54	2740	0.0	8.35	785.6				
11/25/2017	19:26:22	2818	0.0	8.35	785.6	Bump Top Plug 2300-2800 psi			
11/25/2017	19:26:27	2793	0.0	8.35	785.6	End Displacement			
11/25/2017	19:26:39	2805	0.0	8.35	785.6	Reset Total, Vol = 302.2			
11/25/2017	19:26:54	2764	0.0	8.35	785.6				
11/25/2017	19:27:54	2797	0.0	8.35	785.6				
11/25/2017	19:28:54	1271	0.0	8.35	785.6				
11/25/2017	19:28:56	1083	0.0	8.35	785.6	Bleed Off, Floats Hold, 2 bbl Back			
11/25/2017	19:29:54	-13	0.0	8.35	785.6				
11/25/2017	19:30:54	-6	0.0	8.35	785.6				
11/25/2017	19:31:54	128	0.8	8.35	785.7				

Well			Field	Job Start		Customer	Job Number
Burough 17N-17HZ			Wattenberg	Nov/25/2017		Anadarko	D8WD-00820
Date	Time 24-hr clock	Treating Pressure PSI	Flow Rate B/M	Density LB/G	Volume BBL	Message	
11/25/2017	19:33:52	2946	0.0	8.35	788.6	Start 15min, Casing Test	
11/25/2017	19:33:54	2992	0.0	8.35	788.6		
11/25/2017	19:34:54	2998	0.0	8.35	788.6		
11/25/2017	19:35:54	3005	0.0	8.35	788.6		
11/25/2017	19:36:54	3020	0.0	8.35	788.6		
11/25/2017	19:37:54	3038	0.0	8.35	788.6		
11/25/2017	19:38:54	3057	0.0	8.35	788.6		
11/25/2017	19:39:54	3078	0.0	8.35	788.6		
11/25/2017	19:40:54	3097	0.0	8.35	788.6		
11/25/2017	19:41:54	3115	0.0	8.35	788.6		
11/25/2017	19:42:54	3135	0.0	8.35	788.6		
11/25/2017	19:43:54	3155	0.0	8.35	788.6		
11/25/2017	19:44:54	3173	0.0	8.35	788.6		
11/25/2017	19:45:54	3193	0.0	8.35	788.7		
11/25/2017	19:46:54	3210	0.0	8.35	788.7		
11/25/2017	19:47:54	3230	0.0	8.35	788.7		
11/25/2017	19:48:54	3248	0.0	8.35	788.7		
11/25/2017	19:49:54	3266	0.0	8.35	788.7		
11/25/2017	19:50:54	3284	0.0	8.35	788.7		
11/25/2017	19:51:54	3518	1.2	8.35	788.8		
11/25/2017	19:52:54	4957	0.1	8.35	790.4		
11/25/2017	19:53:54	4981	0.0	8.35	790.4		
11/25/2017	19:54:03	4986	0.0	8.35	790.4	Pressure up to 5k, Pins did not Shear	
11/25/2017	19:54:54	3857	0.0	8.35	790.4		
11/25/2017	19:55:54	3244	2.0	8.35	790.5		
11/25/2017	19:56:54	5047	0.0	8.34	792.5		
11/25/2017	19:57:24	5011	0.0	8.34	792.5	Pressure up to 5k, Pins did not Shear	
11/25/2017	19:57:54	4910	0.0	8.35	792.5		
11/25/2017	19:58:06	4358	0.0	8.34	792.5	Rig Down Cement Head, Rig up High Pressure Swedge	
11/25/2017	19:58:54	511	0.0	8.35	792.5		
11/25/2017	19:59:54	-12	0.0	8.35	792.5		
11/25/2017	20:00:54	-11	0.0	8.35	792.5		
11/25/2017	20:01:54	-11	0.0	8.34	792.5		
11/25/2017	20:02:54	-11	0.0	8.34	792.5		
11/25/2017	20:03:54	-12	0.0	8.35	792.5		
11/25/2017	20:04:54	-11	0.0	8.34	792.5		
11/25/2017	20:05:54	-12	0.0	8.34	792.5		
11/25/2017	20:06:54	-11	0.0	8.35	792.5		
11/25/2017	20:07:54	-11	0.0	8.35	792.5		
11/25/2017	20:08:54	-11	0.0	8.34	792.5		
11/25/2017	20:09:54	-11	0.0	8.34	792.5		
11/25/2017	20:10:54	-10	0.0	8.34	792.5		
11/25/2017	20:11:54	-11	0.0	8.35	792.5		
11/25/2017	20:12:54	-11	0.0	8.34	792.6		
11/25/2017	20:13:54	-11	0.0	8.35	792.6		
11/25/2017	20:14:54	-11	0.0	8.35	792.6		
11/25/2017	20:15:54	-11	0.0	8.35	792.6		
11/25/2017	20:16:54	-10	0.0	8.35	792.6		
11/25/2017	20:17:54	-10	0.0	8.35	792.6		
11/25/2017	20:18:54	-10	0.0	8.35	792.6		
11/25/2017	20:19:54	-10	0.0	8.35	792.6		
11/25/2017	20:20:54	-11	0.0	8.35	792.6		
11/25/2017	20:21:21	-9	0.0	8.35	792.6	10K Swedge Rigged In	
11/25/2017	20:21:54	-8	0.0	8.35	792.6		

Well			Field		Job Start	Customer		Job Number
Borough 17N-17HZ			Wattenberg		Nov/25/2017	Anadarko		D8WD-00820
Date	Time 24-hr clock	Treating Pressure PSI	Flow Rate B/M	Density LB/G	Volume BBL	Message		
11/25/2017	20:23:54	4171	3.4	8.34	796.6			
11/25/2017	20:24:50	3212	2.6	8.34	798.3	Pins Shear, 5450 psi		
11/25/2017	20:24:54	2933	2.2	8.34	798.5			
11/25/2017	20:25:16	2412	2.2	8.34	799.3	Pump 3 Bbl Wet Shoe		
11/25/2017	20:25:54	2307	2.2	8.34	800.6			
11/25/2017	20:26:54	1972	0.0	8.34	801.9			
11/25/2017	20:27:48	646	0.0	8.34	801.9	Bleed Off		
11/25/2017	20:27:51	550	0.0	8.34	801.9	Floats Hold, 2 bbls back		
11/25/2017	20:27:54	207	0.0	8.34	801.9			
11/25/2017	20:28:29	-13	0.0	8.34	802.0	End Job		

Post Job Summary

Average Pump Rates, bbl/min					Volume of Fluid Injected, bbl			
Slurry 3.6	N2	Mud	Maximum Rate 18.5	Total Slurry 384.0	Mud 0.0	Spacer 60.0	N2	
Treating Pressure Summary, psi					Breakdown Fluid			
Maximum 5503	Final -11	Average 1137	Bump Plug to 2800	Breakdown	Type	Volume bbl	Density lb/gal	
Avg. N2 Percent %		Designed Slurry Volume 0.0 bbl		Displacement 302.2 bbl	Mix Water Temp 65 degF	Cement Circulated to Surface? <input type="checkbox"/>	Volume bbl	
						Washed Thru Perfs <input type="checkbox"/>	To ft	
Customer or Authorized Representative Jason Laub			Schlumberger Supervisor Ryan Drilling/Chad Perry			Circulation Lost <input type="checkbox"/>	Job Completed <input checked="" type="checkbox"/>	
						-	-	