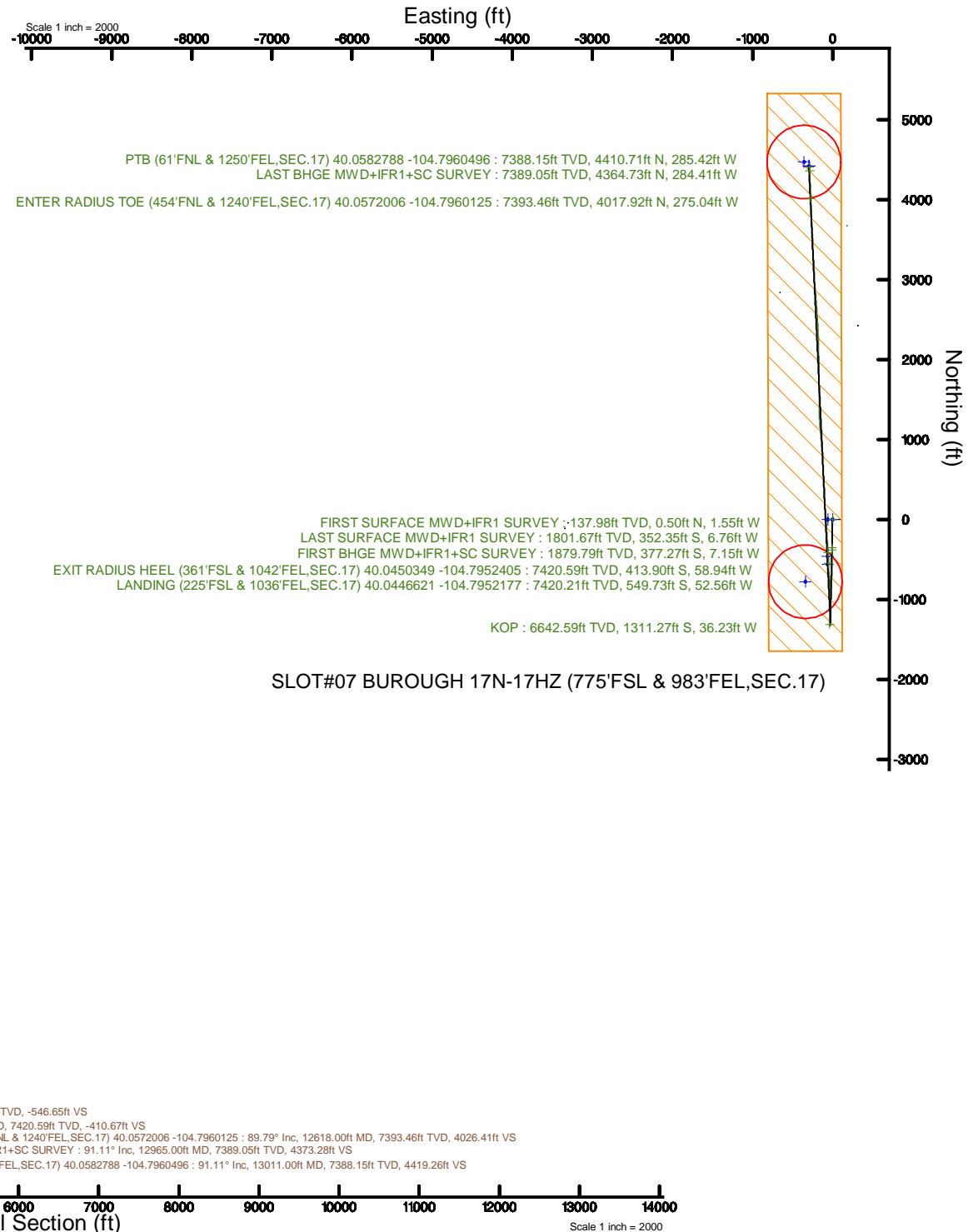


Location:	COLORADO	Slot:	SL07#07 BURGHO 17N-17Z (775FSL & 983FEL, SEC. 17)
Field:	WELD COUNTY (UTM/TRUE NORTH)	Well:	BURGHO 17N-17Z
Facility:	SEC.17-T1N-R66W	Wellbore:	BURGHO 17N-17Z PWB
Plot reference wellbore is BURGHO 17N-17Z PWP Rev-B.0		Grid System: NAD83 / UTM Zone 13 North, US feet	
True vertical depths are referenced to PD 564 (26) (RT)		* = Wellpath was transformed from a different geoidic datum	
Measured depths are referenced to PD 564 (26) (RT)		North Reference: True north	
PD 564 (26) (RT) to Mean Sea Level: 5005 feet		Scale: True distance	
Mean Sea Level to Mud line (At Slot: SL07#07 BURGHO 17N-17Z (775FSL & 983FEL, SEC. 17)): 0 feet		Depths are in feet	
Coordinates are in feet referenced to Slot		Created by: painseir on 2017-12-10	
		Database: WA_DEN_Anadarko_Defn	



REFERENCE WELLPATH IDENTIFICATION

Operator	KERR-MCGEE OIL & GAS ONSHORE LP (WA)	Slot	SLOT#07 BURROUGH 17N-17HZ (775'FSL & 983'FEL,SEC.17)
Area	COLORADO	Well	BURROUGH 17N-17HZ
Field	WELD COUNTY (UTM/TRUE NORTH)	Wellbore	BURROUGH 17N-17HZ AWB
Facility	SEC.17-T1N-R66W		

REPORT SETUP INFORMATION

Projection System	NAD83 / UTM Zone 13 North, US feet	Software System	WellArchitect® 5.0
North Reference	True	User	Painsetr
Scale	0.999604	Report Generated	12/1/2017 at 10:18 AM
Convergence at slot	0.14° East	Database/Source file	WA_DEN_Anadarko_Defn/BURROUGH_17N-17HZ_AWP.xml

WELLPATH LOCATION

	Local coordinates		Grid coordinates		Geographic coordinates	
	North[ft]	East[ft]	Easting[US ft]	Northing[US ft]	Latitude	Longitude
Slot Location	-8437.77	-475.03	1697780.05	14543612.33	40°02'46.216"N	104°47'42.108"W
Facility Reference Pt			1698235.31	14552047.82	40°04'09.600"N	104°47'36.000"W
Field Reference Pt			1698235.31	14552047.82	40°04'09.600"N	104°47'36.000"W

WELLPATH DATUM

Calculation method	Minimum curvature	PD 564 (26') (RT) to Facility Vertical Datum	5005.00ft
Horizontal Reference Pt	Slot	PD 564 (26') (RT) to Mean Sea Level	5005.00ft
Vertical Reference Pt	PD 564 (26') (RT)	PD 564 (26') (RT) to Mud Line at Slot (SLOT#07 BURROUGH 17N-17HZ (775'FSL & 983'FEL,SEC.17))	5005.00ft
MD Reference Pt	PD 564 (26') (RT)	Section Origin	N 0.00, E 0.00 ft
Field Vertical Reference	Mean Sea Level	Section Azimuth	357.30°

REFERENCE WELLPATH IDENTIFICATION

Operator	KERR-MCGEE OIL & GAS ONSHORE LP (WA)	Slot	SLOT#07 BUROUGH 17N-17HZ (775'FSL & 983'FEL,SEC.17)
Area	COLORADO	Well	BUROUGH 17N-17HZ
Field	WELD COUNTY (UTM/TRUE NORTH)	Wellbore	BUROUGH 17N-17HZ AWP
Facility	SEC.17-T1N-R66W		

WELLPATH DATA (185 stations) † = interpolated/extrapolated station

MD [ft]	Inclination [°]	Azimuth [°]	TVD [ft]	Vert Sect [ft]	North [ft]	East [ft]	Grid East [US ft]	Grid North [US ft]	Latitude	Longitude	DLS [°/100ft]	Comments
0.00†	0.000	287.830	0.00	0.00	0.00	0.00	1697780.05	14543612.33	40°02'46.216"N	104°47'42.108"W	0.00	
26.00	0.000	287.830	26.00	0.00	0.00	0.00	1697780.05	14543612.33	40°02'46.216"N	104°47'42.108"W	0.00	
138.00	1.670	287.830	137.98	0.57	0.50	-1.55	1697778.50	14543612.82	40°02'46.221"N	104°47'42.128"W	1.49	FIRST SURFACE MWD+IFR1 SURVEY
170.00	1.100	291.870	169.97	0.86	0.76	-2.28	1697777.77	14543613.08	40°02'46.223"N	104°47'42.137"W	1.81	
202.00	0.570	355.770	201.97	1.15	1.03	-2.58	1697777.47	14543613.35	40°02'46.226"N	104°47'42.141"W	3.10	
233.00	0.350	46.660	232.97	1.37	1.25	-2.52	1697777.53	14543613.57	40°02'46.228"N	104°47'42.140"W	1.43	
265.00	0.700	160.390	264.97	1.24	1.13	-2.39	1697777.66	14543613.45	40°02'46.227"N	104°47'42.139"W	2.81	
296.00	0.970	165.220	295.97	0.80	0.70	-2.25	1697777.80	14543613.02	40°02'46.223"N	104°47'42.137"W	0.90	
327.00	1.630	172.340	326.96	0.11	0.01	-2.13	1697777.92	14543612.33	40°02'46.216"N	104°47'42.135"W	2.19	
359.00	2.500	179.810	358.94	-1.04	-1.14	-2.07	1697777.99	14543611.18	40°02'46.205"N	104°47'42.135"W	2.84	
390.00	3.120	185.350	389.90	-2.55	-2.66	-2.14	1697777.92	14543609.67	40°02'46.190"N	104°47'42.136"W	2.18	
422.00	3.910	183.770	421.84	-4.50	-4.61	-2.30	1697777.77	14543607.71	40°02'46.170"N	104°47'42.138"W	2.49	
454.00	4.350	179.280	453.76	-6.80	-6.91	-2.35	1697777.72	14543605.41	40°02'46.148"N	104°47'42.138"W	1.71	
485.00	4.970	182.180	484.65	-9.31	-9.43	-2.39	1697777.69	14543602.89	40°02'46.123"N	104°47'42.139"W	2.14	
517.00	5.410	181.660	516.52	-12.19	-12.32	-2.48	1697777.60	14543600.00	40°02'46.094"N	104°47'42.140"W	1.38	
548.00	6.110	180.550	547.37	-15.30	-15.43	-2.54	1697777.54	14543596.89	40°02'46.063"N	104°47'42.141"W	2.29	
580.00	6.330	181.390	579.18	-18.76	-18.90	-2.60	1697777.49	14543593.43	40°02'46.029"N	104°47'42.141"W	0.74	
613.00	6.860	179.280	611.96	-22.54	-22.69	-2.62	1697777.48	14543589.64	40°02'45.992"N	104°47'42.142"W	1.77	
644.00	7.290	181.040	642.72	-26.36	-26.51	-2.63	1697777.48	14543585.82	40°02'45.954"N	104°47'42.142"W	1.55	
676.00	7.380	180.160	674.46	-30.43	-30.59	-2.68	1697777.45	14543581.74	40°02'45.914"N	104°47'42.142"W	0.45	
708.00	7.910	178.230	706.18	-34.69	-34.85	-2.61	1697777.52	14543577.48	40°02'45.872"N	104°47'42.142"W	1.84	
740.00	8.750	181.130	737.84	-39.32	-39.48	-2.59	1697777.55	14543572.85	40°02'45.826"N	104°47'42.141"W	2.93	
771.00	9.840	183.500	768.43	-44.30	-44.49	-2.80	1697777.35	14543567.85	40°02'45.776"N	104°47'42.144"W	3.73	
803.00	10.720	183.150	799.92	-49.98	-50.19	-3.13	1697777.03	14543562.15	40°02'45.720"N	104°47'42.148"W	2.76	
835.00	11.070	182.970	831.34	-56.00	-56.23	-3.46	1697776.73	14543556.11	40°02'45.660"N	104°47'42.152"W	1.10	
867.00	12.040	183.150	862.69	-62.38	-62.63	-3.80	1697776.40	14543549.72	40°02'45.597"N	104°47'42.157"W	3.03	
898.00	13.360	183.410	892.93	-69.16	-69.43	-4.19	1697776.02	14543542.91	40°02'45.530"N	104°47'42.162"W	4.26	
930.00	14.150	183.590	924.01	-76.72	-77.03	-4.65	1697775.58	14543535.32	40°02'45.455"N	104°47'42.168"W	2.47	
962.00	14.850	182.970	955.00	-84.69	-85.02	-5.11	1697775.14	14543527.32	40°02'45.376"N	104°47'42.174"W	2.24	
994.00	15.160	180.690	985.90	-92.95	-93.30	-5.37	1697774.89	14543519.05	40°02'45.294"N	104°47'42.177"W	2.08	
1025.00	16.170	181.390	1015.75	-101.30	-101.67	-5.53	1697774.76	14543510.68	40°02'45.211"N	104°47'42.179"W	3.31	
1057.00	16.920	181.040	1046.43	-110.39	-110.78	-5.72	1697774.59	14543501.58	40°02'45.121"N	104°47'42.182"W	2.36	
1089.00	16.520	181.040	1077.07	-119.58	-119.99	-5.89	1697774.44	14543492.37	40°02'45.030"N	104°47'42.184"W	1.25	
1120.00	16.830	179.280	1106.77	-128.46	-128.88	-5.91	1697774.44	14543483.48	40°02'44.942"N	104°47'42.184"W	1.91	
1152.00	17.230	179.020	1137.37	-137.83	-138.25	-5.77	1697774.60	14543474.12	40°02'44.850"N	104°47'42.182"W	1.27	
1184.00	17.140	178.400	1167.94	-147.28	-147.70	-5.56	1697774.83	14543464.67	40°02'44.756"N	104°47'42.179"W	0.64	
1216.00	16.960	178.930	1198.53	-156.66	-157.08	-5.34	1697775.07	14543455.29	40°02'44.664"N	104°47'42.177"W	0.74	
1247.00	17.270	178.400	1228.16	-165.78	-166.20	-5.13	1697775.31	14543446.18	40°02'44.574"N	104°47'42.174"W	1.12	
1279.00	17.530	178.840	1258.70	-175.35	-175.77	-4.90	1697775.56	14543436.61	40°02'44.479"N	104°47'42.171"W	0.91	
1311.00	18.150	180.870	1289.16	-185.14	-185.57	-4.87	1697775.60	14543426.82	40°02'44.382"N	104°47'42.171"W	2.74	
1343.00	18.410	179.370	1319.54	-195.16	-195.61	-4.90	1697775.61	14543416.78	40°02'44.283"N	104°47'42.171"W	1.68	
1374.00	17.930	179.110	1349.00	-204.82	-205.28	-4.77	1697775.76	14543407.12	40°02'44.187"N	104°47'42.169"W	1.57	
1406.00	18.110	178.140	1379.43	-214.72	-215.17	-4.53	1697776.02	14543397.23	40°02'44.090"N	104°47'42.166"W	1.09	
1438.00	18.060	178.140	1409.85	-224.65	-225.10	-4.21	1697776.36	14543387.31	40°02'43.992"N	104°47'42.162"W	0.16	
1469.00	17.750	180.340	1439.35	-234.18	-234.63	-4.08	1697776.51	14543377.78	40°02'43.897"N	104°47'42.160"W	2.40	

REFERENCE WELLPATH IDENTIFICATION			
Operator	KERR-MCGEE OIL & GAS ONSHORE LP (WA)	Slot	SLOT#07 BUROUGH 17N-17HZ (775'FSL & 983'FEL, SEC.17)
Area	COLORADO	Well	BUROUGH 17N-17HZ
Field	WELD COUNTY (UTM/TRUE NORTH)	Wellbore	BUROUGH 17N-17HZ AWP
Facility	SEC.17-T1N-R66W		

WELLPATH DATA (185 stations)												
MD [ft]	Inclination [°]	Azimuth [°]	TVD [ft]	Vert Sect [ft]	North [ft]	East [ft]	Grid East [US ft]	Grid North [US ft]	Latitude	Longitude	DLS [°/100ft]	Comments
1501.00	17.400	181.830	1469.85	-243.82	-244.29	-4.26	1697776.35	14543368.13	40°02'43.802"N	104°47'42.163"W	1.78	
1533.00	17.050	182.100	1500.42	-253.26	-253.76	-4.59	1697776.05	14543358.66	40°02'43.708"N	104°47'42.167"W	1.12	
1564.00	17.400	181.220	1530.03	-262.42	-262.93	-4.85	1697775.81	14543349.49	40°02'43.618"N	104°47'42.170"W	1.41	
1596.00	17.620	180.250	1560.54	-272.03	-272.56	-4.97	1697775.71	14543339.86	40°02'43.522"N	104°47'42.172"W	1.14	
1628.00	18.020	179.460	1591.01	-281.81	-282.35	-4.95	1697775.75	14543330.07	40°02'43.426"N	104°47'42.172"W	1.46	
1659.00	18.680	179.630	1620.43	-291.56	-292.11	-4.87	1697775.85	14543320.32	40°02'43.329"N	104°47'42.171"W	2.14	
1691.00	18.370	182.180	1650.77	-301.71	-302.28	-5.03	1697775.72	14543310.16	40°02'43.229"N	104°47'42.173"W	2.71	
1723.00	18.460	182.450	1681.14	-311.78	-312.38	-5.44	1697775.33	14543300.06	40°02'43.129"N	104°47'42.178"W	0.39	
1755.00	18.980	182.450	1711.44	-322.00	-322.64	-5.88	1697774.92	14543289.80	40°02'43.028"N	104°47'42.184"W	1.63	
1787.00	18.150	181.130	1741.78	-332.16	-332.82	-6.20	1697774.62	14543279.63	40°02'42.927"N	104°47'42.188"W	2.91	
1818.00	18.150	182.100	1771.23	-341.79	-342.47	-6.47	1697774.37	14543269.98	40°02'42.832"N	104°47'42.191"W	0.97	
1850.00	17.840	181.300	1801.67	-351.65	-352.35	-6.76	1697774.10	14543260.10	40°02'42.734"N	104°47'42.195"W	1.24	LAST SURFACE MWD+IFR1 SURVEY
1932.00	17.540	180.460	1879.79	-376.51	-377.27	-7.15	1697773.77	14543235.19	40°02'42.488"N	104°47'42.200"W	0.48	FIRST BHGE MWD+IFR1+SC SURVEY
2022.00	18.920	181.280	1965.27	-404.61	-405.42	-7.58	1697773.40	14543207.05	40°02'42.210"N	104°47'42.205"W	1.56	
2112.00	18.050	178.400	2050.63	-433.11	-433.94	-7.52	1697773.53	14543178.54	40°02'41.928"N	104°47'42.205"W	1.40	
2201.00	17.310	181.350	2135.43	-460.10	-460.96	-7.45	1697773.67	14543151.53	40°02'41.661"N	104°47'42.204"W	1.31	
2291.00	18.310	184.820	2221.12	-487.48	-488.44	-8.95	1697772.23	14543124.06	40°02'41.389"N	104°47'42.223"W	1.62	
2380.00	17.380	182.780	2305.83	-514.57	-515.65	-10.77	1697770.47	14543096.86	40°02'41.120"N	104°47'42.246"W	1.26	
2469.00	19.270	182.980	2390.32	-542.42	-543.59	-12.18	1697769.13	14543068.92	40°02'40.844"N	104°47'42.265"W	2.12	
2559.00	18.370	181.230	2475.50	-571.35	-572.60	-13.25	1697768.12	14543039.92	40°02'40.557"N	104°47'42.278"W	1.18	
2648.00	19.420	181.500	2559.71	-600.09	-601.42	-13.94	1697767.50	14543011.12	40°02'40.273"N	104°47'42.287"W	1.18	
2738.00	18.490	179.310	2644.83	-629.28	-630.64	-14.16	1697767.35	14542981.90	40°02'39.984"N	104°47'42.290"W	1.30	
2827.00	17.100	177.980	2729.57	-656.47	-657.83	-13.53	1697768.04	14542954.73	40°02'39.715"N	104°47'42.282"W	1.63	
2917.00	18.050	179.520	2815.37	-683.63	-685.00	-12.95	1697768.68	14542927.57	40°02'39.447"N	104°47'42.274"W	1.18	
3006.00	17.770	181.650	2900.05	-710.95	-712.36	-13.22	1697768.47	14542900.22	40°02'39.176"N	104°47'42.278"W	0.80	
3095.00	17.870	184.660	2984.79	-738.04	-739.55	-14.72	1697767.03	14542873.04	40°02'38.908"N	104°47'42.297"W	1.04	
3185.00	18.670	183.290	3070.25	-766.06	-767.70	-16.67	1697765.15	14542844.90	40°02'38.629"N	104°47'42.322"W	1.01	
3274.00	17.040	182.730	3154.96	-793.21	-794.94	-18.11	1697763.78	14542817.66	40°02'38.360"N	104°47'42.341"W	1.84	
3364.00	17.650	183.470	3240.87	-819.91	-821.74	-19.56	1697762.38	14542790.88	40°02'38.095"N	104°47'42.360"W	0.72	
3453.00	18.940	182.420	3325.37	-847.71	-849.64	-20.99	1697761.02	14542762.98	40°02'37.820"N	104°47'42.378"W	1.50	
3543.00	17.240	181.670	3410.91	-875.56	-877.56	-22.00	1697760.08	14542735.07	40°02'37.544"N	104°47'42.391"W	1.91	
3633.00	18.270	178.590	3496.63	-902.96	-905.00	-22.04	1697760.10	14542707.64	40°02'37.273"N	104°47'42.391"W	1.55	
3722.00	17.570	182.520	3581.31	-930.28	-932.36	-22.29	1697759.92	14542680.28	40°02'37.002"N	104°47'42.395"W	1.57	
3812.00	17.920	182.040	3667.03	-957.61	-959.77	-23.38	1697758.89	14542652.88	40°02'36.731"N	104°47'42.409"W	0.42	
3901.00	18.560	182.640	3751.56	-985.36	-987.61	-24.52	1697757.82	14542625.06	40°02'36.456"N	104°47'42.423"W	0.75	
3991.00	16.400	181.950	3837.40	-1012.29	-1014.62	-25.61	1697756.79	14542598.06	40°02'36.189"N	104°47'42.437"W	2.41	
4081.00	16.720	178.970	3923.67	-1037.89	-1040.26	-25.81	1697756.65	14542572.43	40°02'35.936"N	104°47'42.440"W	1.01	
4170.00	18.150	181.870	4008.58	-1064.51	-1066.92	-26.03	1697756.49	14542545.78	40°02'35.672"N	104°47'42.443"W	1.88	
4260.00	18.390	181.230	4094.04	-1092.65	-1095.12	-26.79	1697755.79	14542517.58	40°02'35.394"N	104°47'42.452"W	0.35	
4349.00	19.320	180.430	4178.26	-1121.35	-1123.88	-27.20	1697755.44	14542488.84	40°02'35.110"N	104°47'42.458"W	1.08	
4439.00	17.220	180.950	4263.72	-1149.52	-1152.09	-27.54	1697755.18	14542460.64	40°02'34.831"N	104°47'42.462"W	2.34	
4528.00	18.930	180.720	4348.33	-1177.08	-1179.70	-27.94	1697754.84	14542433.04	40°02'34.558"N	104°47'42.467"W	1.92	
4618.00	16.750	179.940	4433.99	-1204.61	-1207.27	-28.11	1697754.73	14542405.48	40°02'34.285"N	104°47'42.469"W	2.44	
4707.00	13.790	177.620	4519.84	-1228.03	-1230.70	-27.65	1697755.24	14542382.06	40°02'34.054"N	104°47'42.464"W	3.40	
4821.00	11.040	176.500	4631.17	-1252.54	-1255.17	-26.42	1697756.53	14542357.60	40°02'33.812"N	104°47'42.448"W	2.42	

REFERENCE WELLPATH IDENTIFICATION			
Operator	KERR-MCGEE OIL & GAS ONSHORE LP (WA)	Slot	SLOT#07 BUROUGH 17N-17HZ (775'FSL & 983'FEL,SEC.17)
Area	COLORADO	Well	BUROUGH 17N-17HZ
Field	WELD COUNTY (UTM/TRUE NORTH)	Wellbore	BUROUGH 17N-17HZ AWB
Facility	SEC.17-T1N-R66W		

WELLPATH DATA (185 stations) † = interpolated/extrapolated station												
MD (ft)	Inclination (°)	Azimuth (°)	TVD (ft)	Vert Sect (ft)	North (ft)	East (ft)	Grid East (US ft)	Grid North (US ft)	Latitude	Longitude	DLS (°/100ft)	Comments
4911.00	9.290	176.130	4719.75	-1268.42	-1271.02	-25.41	1697757.58	14542341.76	40°02'33.655"N	104°47'42.435"W	1.95	
5000.00	8.080	176.360	4807.73	-1281.86	-1284.43	-24.52	1697758.49	14542328.35	40°02'33.523"N	104°47'42.423"W	1.36	
5089.00	7.090	176.770	4895.95	-1293.60	-1296.16	-23.82	1697759.23	14542316.63	40°02'33.407"N	104°47'42.414"W	1.11	
5179.00	5.760	176.430	4985.38	-1303.67	-1306.21	-23.22	1697759.84	14542306.59	40°02'33.308"N	104°47'42.407"W	1.48	
5268.00	2.960	188.640	5074.12	-1310.39	-1312.94	-23.29	1697759.79	14542299.86	40°02'33.241"N	104°47'42.407"W	3.30	
5358.00	2.480	193.050	5164.02	-1314.54	-1317.14	-24.08	1697759.01	14542295.66	40°02'33.200"N	104°47'42.418"W	0.58	
5447.00	1.790	198.490	5252.95	-1317.69	-1320.33	-24.95	1697758.14	14542292.47	40°02'33.168"N	104°47'42.429"W	0.81	
5536.00	1.490	205.680	5341.92	-1320.01	-1322.69	-25.90	1697757.21	14542290.11	40°02'33.145"N	104°47'42.441"W	0.41	
5626.00	1.410	224.710	5431.89	-1321.79	-1324.53	-27.18	1697755.93	14542288.26	40°02'33.127"N	104°47'42.457"W	0.54	
5715.00	1.100	230.470	5520.87	-1323.04	-1325.85	-28.61	1697754.50	14542286.94	40°02'33.114"N	104°47'42.476"W	0.38	
5805.00	0.890	244.320	5610.85	-1323.83	-1326.71	-29.91	1697753.21	14542286.08	40°02'33.105"N	104°47'42.493"W	0.35	
5894.00	0.730	261.530	5699.84	-1324.16	-1327.09	-31.09	1697752.03	14542285.70	40°02'33.101"N	104°47'42.508"W	0.33	
5984.00	0.720	264.350	5789.84	-1324.24	-1327.23	-32.22	1697750.90	14542285.55	40°02'33.100"N	104°47'42.522"W	0.04	
6073.00	0.740	286.530	5878.83	-1324.08	-1327.12	-33.33	1697749.79	14542285.66	40°02'33.101"N	104°47'42.537"W	0.32	
6163.00	0.620	306.390	5968.82	-1323.59	-1326.67	-34.28	1697748.84	14542286.11	40°02'33.106"N	104°47'42.549"W	0.29	
6253.00	0.730	329.030	6058.82	-1322.77	-1325.89	-34.96	1697748.15	14542286.89	40°02'33.113"N	104°47'42.558"W	0.32	
6342.00	0.640	336.840	6147.81	-1321.81	-1324.94	-35.45	1697747.66	14542287.83	40°02'33.123"N	104°47'42.564"W	0.15	
6432.00	1.050	12.960	6237.80	-1320.54	-1323.68	-35.46	1697747.65	14542289.10	40°02'33.135"N	104°47'42.564"W	0.73	
6521.00	1.560	17.610	6326.78	-1318.62	-1321.73	-34.92	1697748.19	14542291.05	40°02'33.154"N	104°47'42.557"W	0.58	
6611.00	1.770	3.420	6416.74	-1316.09	-1319.17	-34.46	1697748.84	14542293.60	40°02'33.180"N	104°47'42.551"W	0.51	
6701.00	1.830	347.290	6506.70	-1313.29	-1316.38	-34.70	1697748.40	14542296.39	40°02'33.207"N	104°47'42.554"W	0.56	
6790.00	2.190	336.020	6595.64	-1310.31	-1313.44	-35.70	1697747.39	14542299.33	40°02'33.236"N	104°47'42.567"W	0.60	
6837.00†	3.337	352.832	6642.59	-1308.11	-1311.27	-36.23	1697746.85	14542301.50	40°02'33.258"N	104°47'42.574"W	2.96	KOP
6880.00	4.510	0.220	6685.49	-1305.17	-1308.33	-36.38	1697746.69	14542304.43	40°02'33.287"N	104°47'42.576"W	2.96	
6969.00	9.780	16.800	6773.77	-1294.54	-1297.59	-34.18	1697748.87	14542315.18	40°02'33.393"N	104°47'42.548"W	6.30	
7059.00	15.400	2.240	6861.60	-1275.41	-1278.31	-31.51	1697751.50	14542334.46	40°02'33.583"N	104°47'42.513"W	7.12	
7148.00	22.330	0.680	6945.76	-1246.73	-1249.56	-30.84	1697752.10	14542363.20	40°02'33.868"N	104°47'42.505"W	7.81	
7238.00	30.230	355.720	7026.41	-1206.94	-1209.80	-32.33	1697750.52	14542402.93	40°02'34.260"N	104°47'42.524"W	9.10	
7327.00	33.790	0.070	7101.87	-1159.81	-1162.69	-33.97	1697748.76	14542450.02	40°02'34.726"N	104°47'42.545"W	4.76	
7417.00	41.230	0.300	7173.22	-1105.11	-1107.93	-33.79	1697748.82	14542504.76	40°02'35.267"N	104°47'42.542"W	8.27	
7506.00	51.900	1.370	7234.32	-1040.71	-1043.40	-32.79	1697749.67	14542569.26	40°02'35.905"N	104°47'42.530"W	12.02	
7595.00	57.530	359.840	7285.71	-968.21	-970.79	-32.06	1697750.24	14542641.85	40°02'36.622"N	104°47'42.520"W	6.48	
7685.00	62.890	357.430	7330.41	-890.16	-892.74	-33.97	1697748.15	14542719.86	40°02'37.394"N	104°47'42.545"W	6.39	
7774.00	69.480	357.050	7366.33	-808.78	-811.46	-37.89	1697744.04	14542801.10	40°02'38.197"N	104°47'42.595"W	7.41	
7864.00	75.200	355.930	7393.62	-723.07	-725.90	-43.15	1697738.59	14542886.62	40°02'39.042"N	104°47'42.663"W	6.47	
7953.00	79.840	356.660	7412.85	-636.21	-639.21	-48.76	1697732.78	14542973.26	40°02'39.899"N	104°47'42.735"W	5.27	
8043.00	90.770	358.460	7420.21	-546.65	-549.73	-52.56	1697728.77	14543062.69	40°02'40.783"N	104°47'42.784"W	12.31	LANDING (225'FSL & 1036'FEL,SEC.17) 40.0446621 -104.7952177
8132.00	89.380	356.810	7420.09	-457.66	-460.81	-56.24	1697724.90	14543151.57	40°02'41.662"N	104°47'42.831"W	2.42	
8179.00†	89.396	356.591	7420.59	-410.67	-413.90	-58.94	1697722.09	14543198.46	40°02'42.126"N	104°47'42.866"W	0.47	EXIT RADIUS HEEL (361'FSL & 1042'FEL,SEC.17) 40.0450349 -104.7952405
8222.00	89.410	356.390	7421.04	-367.67	-370.98	-61.57	1697719.36	14543241.36	40°02'42.550"N	104°47'42.900"W	0.47	
8311.00	89.230	356.420	7422.10	-278.69	-282.16	-67.15	1697713.57	14543330.13	40°02'43.428"N	104°47'42.971"W	0.21	
8400.00	89.140	356.550	7423.36	-189.71	-193.34	-72.61	1697707.92	14543418.90	40°02'44.305"N	104°47'43.042"W	0.18	
8490.00	88.580	356.350	7425.15	-99.74	-103.53	-78.18	1697702.14	14543508.66	40°02'45.193"N	104°47'43.113"W	0.66	
8580.00	88.860	356.270	7427.16	-9.77	-13.74	-83.97	1697696.14	14543598.40	40°02'46.080"N	104°47'43.188"W	0.32	
8669.00	91.940	355.880	7426.54	79.20	75.04	-90.06	1697689.85	14543687.13	40°02'46.958"N	104°47'43.266"W	3.49	

REFERENCE WELLPATH IDENTIFICATION			
Operator	KERR-MCGEE OIL & GAS ONSHORE LP (WA)	Slot	SLOT#07 BUROUGH 17N-17HZ (775'FSL & 983'FEL,SEC.17)
Area	COLORADO	Well	BUROUGH 17N-17HZ
Field	WELD COUNTY (UTM/TRUE NORTH)	Wellbore	BUROUGH 17N-17HZ AWB
Facility	SEC.17-T1N-R66W		

WELLPATH DATA (185 stations) † = interpolated/extrapolated station												
MD (ft)	Inclination (°)	Azimuth (°)	TVD (ft)	Vert Sect (ft)	North (ft)	East (ft)	Grid East (US ft)	Grid North (US ft)	Latitude	Longitude	DLS °/100ft	Comments
8759.00	90.950	356.470	7424.27	169.15	164.81	-96.06	1697683.65	14543776.85	40°02'47.845"N	104°47'43.343"W	1.28	
8848.00	91.660	356.490	7422.25	258.11	253.62	-101.53	1697677.98	14543865.61	40°02'48.722"N	104°47'43.413"W	0.80	
8938.00	90.090	357.720	7420.87	348.10	343.49	-106.07	1697673.23	14543955.43	40°02'49.610"N	104°47'43.472"W	2.22	
9027.00	90.520	357.420	7420.40	437.10	432.41	-109.84	1697669.26	14544044.31	40°02'50.489"N	104°47'43.520"W	0.59	
9116.00	90.590	357.290	7419.53	526.09	521.31	-113.95	1697664.95	14544133.16	40°02'51.368"N	104°47'43.573"W	0.17	
9205.00	91.790	357.230	7417.69	615.07	610.19	-118.21	1697660.49	14544222.00	40°02'52.246"N	104°47'43.628"W	1.35	
9295.00	90.370	357.120	7415.99	705.05	700.06	-122.64	1697655.85	14544311.82	40°02'53.134"N	104°47'43.685"W	1.58	
9384.00	90.950	356.620	7414.97	794.04	788.92	-127.50	1697650.79	14544400.64	40°02'54.012"N	104°47'43.747"W	0.86	
9474.00	91.630	356.400	7412.94	884.01	878.73	-132.98	1697645.11	14544490.40	40°02'54.900"N	104°47'43.818"W	0.79	
9563.00	90.800	355.610	7411.05	972.97	967.49	-139.18	1697638.70	14544579.11	40°02'55.777"N	104°47'43.898"W	1.29	
9652.00	91.140	355.180	7409.55	1061.90	1056.19	-146.32	1697631.36	14544667.76	40°02'56.654"N	104°47'43.990"W	0.62	
9742.00	88.860	354.510	7409.55	1151.82	1145.82	-154.41	1697623.07	14544757.33	40°02'57.539"N	104°47'44.093"W	2.64	
9831.00	87.470	357.320	7412.40	1240.73	1234.54	-160.74	1697616.53	14544846.00	40°02'58.416"N	104°47'44.175"W	3.52	
9921.00	87.470	358.700	7416.37	1330.64	1324.39	-163.87	1697613.20	14544935.81	40°02'59.304"N	104°47'44.215"W	1.53	
10011.00	86.920	358.810	7420.77	1420.50	1414.26	-165.82	1697611.05	14545025.64	40°03'00.192"N	104°47'44.240"W	0.62	
10100.00	89.320	359.820	7423.69	1509.39	1503.20	-166.88	1697609.78	14545114.54	40°03'01.071"N	104°47'44.254"W	2.93	
10190.00	89.350	358.880	7424.74	1599.32	1593.19	-167.90	1697608.55	14545204.49	40°03'01.960"N	104°47'44.267"W	1.04	
10279.00	90.370	359.040	7424.95	1688.29	1682.17	-169.52	1697606.73	14545293.44	40°03'02.840"N	104°47'44.288"W	1.16	
10369.00	90.520	359.110	7424.26	1778.24	1772.16	-170.97	1697605.07	14545383.38	40°03'03.729"N	104°47'44.307"W	0.18	
10459.00	90.890	358.790	7423.15	1868.20	1862.14	-172.62	1697603.22	14545473.32	40°03'04.618"N	104°47'44.328"W	0.54	
10548.00	91.480	359.560	7421.31	1957.13	1951.11	-173.90	1697601.73	14545562.25	40°03'05.497"N	104°47'44.344"W	1.09	
10638.00	91.730	359.390	7418.79	2047.03	2041.07	-174.72	1697600.70	14545652.17	40°03'06.386"N	104°47'44.355"W	0.34	
10727.00	91.720	358.560	7416.11	2135.95	2130.01	-176.32	1697598.90	14545741.08	40°03'07.265"N	104°47'44.375"W	0.93	
10817.00	92.030	358.440	7413.16	2225.88	2219.93	-178.67	1697596.34	14545830.96	40°03'08.154"N	104°47'44.406"W	0.37	
10906.00	91.170	357.850	7410.68	2314.84	2308.85	-181.55	1697593.26	14545919.83	40°03'09.033"N	104°47'44.443"W	1.17	
10996.00	90.770	357.220	7409.15	2404.82	2398.75	-185.42	1697589.19	14546009.69	40°03'09.921"N	104°47'44.492"W	0.83	
11085.00	90.680	356.630	7408.03	2493.81	2487.62	-190.19	1697584.21	14546098.51	40°03'10.799"N	104°47'44.554"W	0.67	
11175.00	90.490	355.980	7407.11	2583.79	2577.43	-195.99	1697578.20	14546188.27	40°03'11.687"N	104°47'44.628"W	0.75	
11264.00	90.220	355.720	7406.56	2672.76	2666.19	-202.44	1697571.56	14546276.98	40°03'12.564"N	104°47'44.711"W	0.42	
11354.00	90.340	355.850	7406.12	2762.73	2755.95	-209.05	1697564.74	14546366.69	40°03'13.451"N	104°47'44.796"W	0.20	
11443.00	90.550	355.160	7405.43	2851.68	2844.67	-216.02	1697557.57	14546455.36	40°03'14.328"N	104°47'44.886"W	0.81	
11533.00	90.650	354.740	7404.48	2941.60	2934.32	-223.95	1697549.44	14546544.95	40°03'15.214"N	104°47'44.988"W	0.48	
11622.00	89.780	357.470	7404.15	3030.57	3023.10	-229.99	1697543.20	14546633.69	40°03'16.091"N	104°47'45.066"W	3.22	
11711.00	90.000	357.160	7404.32	3119.57	3112.00	-234.16	1697538.82	14546722.54	40°03'16.970"N	104°47'45.119"W	0.43	
11801.00	90.250	356.940	7404.12	3209.57	3201.88	-238.79	1697533.99	14546812.38	40°03'17.858"N	104°47'45.179"W	0.37	
11891.00	90.860	356.950	7403.25	3299.56	3291.75	-243.59	1697528.99	14546902.20	40°03'18.746"N	104°47'45.241"W	0.68	
11980.00	91.140	356.910	7401.70	3388.55	3380.61	-248.35	1697524.02	14546991.01	40°03'19.624"N	104°47'45.302"W	0.32	
12070.00	91.750	359.360	7399.43	3478.50	3470.53	-251.28	1697520.88	14547080.88	40°03'20.513"N	104°47'45.340"W	2.80	
12159.00	89.970	357.310	7398.09	3567.47	3559.47	-253.87	1697518.09	14547169.78	40°03'21.391"N	104°47'45.373"W	3.05	
12249.00	89.570	356.880	7398.46	3657.47	3649.35	-258.43	1697513.33	14547259.62	40°03'22.280"N	104°47'45.431"W	0.65	
12338.00	91.700	358.460	7397.47	3746.45	3738.27	-262.05	1697509.51	14547348.49	40°03'23.158"N	104°47'45.478"W	2.98	
12428.00	90.830	357.230	7395.48	3836.42	3828.18	-265.43	1697505.92	14547438.36	40°03'24.047"N	104°47'45.522"W	1.67	
12517.00	91.050	356.990	7394.02	3925.41	3917.05	-269.92	1697501.23	14547527.19	40°03'24.925"N	104°47'45.579"W	0.37	
12607.00	89.720	357.170	7393.42	4015.41	4006.93	-274.50	1697496.44	14547617.02	40°03'25.813"N	104°47'45.638"W	1.49	
12618.00†	89.789	357.242	7393.46	4026.41	4017.92	-275.04	1697495.88	14547628.00	40°03'25.922"N	104°47'45.645"W	0.91	ENTER RADIUS TOE (454'FNL & 1240'FEL, SEC.17) 40.0572006 -104.7960125

REFERENCE WELLPATH IDENTIFICATION			
Operator	KERR-MCGEE OIL & GAS ONSHORE LP (WA)	Slot	SLOT#07 BUROUGH 17N-17HZ (775'FSL & 983'FEL,SEC.17)
Area	COLORADO	Well	BUROUGH 17N-17HZ
Field	WELD COUNTY (UTM/TRUE NORTH)	Wellbore	BUROUGH 17N-17HZ AWB
Facility	SEC.17-T1N-R66W		

WELLPATH DATA (185 stations)												
MD [ft]	Inclination [°]	Azimuth [°]	TVD [ft]	Vert Sect [ft]	North [ft]	East [ft]	Grid East [US ft]	Grid North [US ft]	Latitude	Longitude	DLS [°/100ft]	Comments
12696.00	90.280	357.750	7393.42	4104.41	4095.84	-278.45	1697492.29	14547705.89	40°03'26.692"N	104°47'45.689"W	0.91	
12786.00	90.990	358.950	7392.42	4194.38	4185.80	-281.04	1697489.50	14547795.80	40°03'27.581"N	104°47'45.722"W	1.55	
12875.00	91.110	358.990	7390.79	4283.33	4274.77	-282.64	1697487.69	14547884.73	40°03'28.460"N	104°47'45.743"W	0.14	
12965.00	91.110	358.750	7389.05	4373.28	4364.73	-284.41	1697485.71	14547974.66	40°03'29.349"N	104°47'45.766"W	0.27	LAST BHGE MWD+IFR1+SC SURVEY
13011.00	91.110	358.750	7388.15	4419.26	4410.71	-285.42	1697484.60	14548020.62	40°03'29.804"N	104°47'45.779"W	0.00	PTB (61'FNL & 1250'FEL,SEC.17) 40.0582788 -104.7960496

TARGETS								
Name	TVD [ft]	North [ft]	East [ft]	Grid East [US ft]	Grid North [US ft]	Latitude	Longitude	Shape
SEC.17-T1N-R66W	0.00	0.00	-59.88	1697720.19	14543612.19	40°02'46.216"N	104°47'42.878"W	polygon
BUROUGH 17N-17HZ BHL REV-1(52'FNL & 1258'FEL,SEC.17)	7375.00	4419.89	-293.08	1697476.92	14548029.77	40°03'29.894"N	104°47'45.877"W	point
BUROUGH 17N-17HZ BHL REV-2(52'FNL & 1262'FEL,SEC.17)	7375.00	4419.89	-297.08	1697472.92	14548029.76	40°03'29.894"N	104°47'45.929"W	point
BUROUGH 17N-17HZ HEEL REV-1(312'FSL & 1047'FEL,SEC.17)	7425.00	-463.42	-62.44	1697718.71	14543148.95	40°02'41.636"N	104°47'42.911"W	point
BUROUGH 17N-17HZ HEEL REV-2(212'FSL & 1047'FEL,SEC.17)	7425.00	-563.42	-62.44	1697718.94	14543048.99	40°02'40.648"N	104°47'42.911"W	point
BUROUGH 17N-17HZ LANDBOX	7425.00	0.00	0.00	1697780.05	14543612.33	40°02'46.216"N	104°47'42.108"W	polygon
BUROUGH 17N-17HZ RADIUS 1	7425.00	-778.56	-339.98	1697442.00	14542833.30	40°02'38.522"N	104°47'46.479"W	polygon
BUROUGH 17N-17HZ RADIUS 2	7425.00	4472.39	-356.00	1697413.90	14548082.10	40°03'30.413"N	104°47'46.686"W	polygon

WELLPATH COMPOSITION - Ref Wellbore: BUROUGH 17N-17HZ AWB				Ref Wellpath: BUROUGH 17N-17HZ AWP		
Start MD [ft]	End MD [ft]	Positional Uncertainty Model		Log Name/Comment		Wellbore
26.00	1850.00	Custom APC ISCWSA REV 2 MWD+IFR1 (approximation)		Custom APC ISCWSA Rev-2 MWD+IFR1 <138 - 1850>		BUROUGH 17N-17HZ AWB
1850.00	12965.00	Custom APC ISCWSA REV 2 MWD+IFR1+SC (approximation)		BHGE Custom APC ISCWSA Rev-2 MWD+IFR1+SC <1932 - 12965>		BUROUGH 17N-17HZ AWB
12965.00	13011.00	Blind Drilling (std)		Projection to bit		BUROUGH 17N-17HZ AWB

REFERENCE WELLPATH IDENTIFICATION			
Operator	KERR-MCGEE OIL & GAS ONSHORE LP (WA)	Slot	SLOT#07 BUROUGH 17N-17HZ (775'FSL & 983'FEL,SEC.17)
Area	COLORADO	Well	BUROUGH 17N-17HZ
Field	WELD COUNTY (UTM/TRUE NORTH)	Wellbore	BUROUGH 17N-17HZ AWB
Facility	SEC.17-T1N-R66W		

WELLPATH COMMENTS				
MD [ft]	Inclination [°]	Azimuth [°]	TVD [ft]	Comment
138.00	1.670	287.830	137.98	FIRST SURFACE MWD+IFR1 SURVEY
1850.00	17.840	181.300	1801.67	LAST SURFACE MWD+IFR1 SURVEY
1932.00	17.540	180.460	1879.79	FIRST BHGE MWD+IFR1+SC SURVEY
6837.00	3.337	352.832	6642.59	KOP
8043.00	90.770	358.460	7420.21	LANDING (225'FSL & 1036'FEL,SEC.17) 40.0446621 -104.7952177
8179.00	89.396	356.591	7420.59	EXIT RADIUS HEEL (361'FSL & 1042'FEL,SEC.17) 40.0450349 -104.7952405
12618.00	89.789	357.242	7393.46	ENTER RADIUS TOE (454'FNL & 1240'FEL,SEC.17) 40.0572006 -104.7960125
12965.00	91.110	358.750	7389.05	LAST BHGE MWD+IFR1+SC SURVEY
13011.00	91.110	358.750	7388.15	PTB (61'FNL & 1250'FEL,SEC.17) 40.0582788 -104.7960496