



6899 Pecos Street, Unit C
Denver, Colorado 80221

CLIENT: Kerr-McGee Oil & Gas Onshore, LP

LOGGED BY: Clayton Robertson

PROJECT MANAGER: Robert Cornez

DRILLING CONTRACTOR: Tasman Geosciences, Inc.

DRILLING EQUIPMENT: AMS Powerprobe 9300-SK

DRILL BIT SIZE (INCHES): 2.375"

DATE STARTED - COMPLETED: 12/4/2014

TOTAL WELL DEPTH (FT. BGS): 10.5

DEPTH TO WATER (FT. BGS): 7

Reynolds Cattle Company GU 1

BORING / WELL ID: BH01

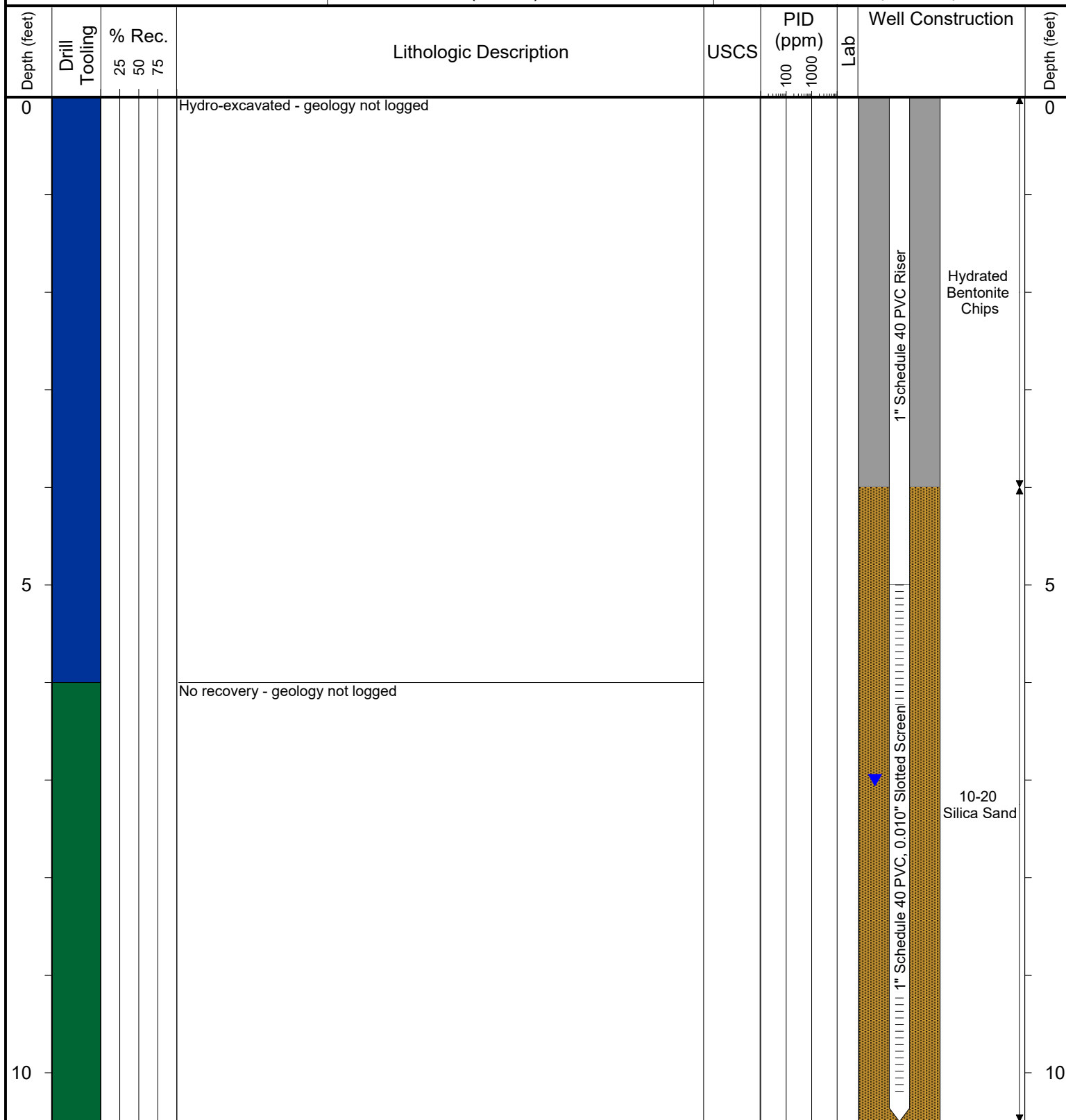
COMPLETION: Flush-mount

NORTHING (CO STATE PLANE): 40.214498758

EASTING (CO STATE PLANE): -104.9476873

CASING ELEVATION (FT. AMSL): 4916.99

GROUND ELEVATION (FT. AMSL): 4917.21



Drilling / Sample Method:

Macro-Core

Expendable Well Tip

Hand Auger

Hydrovac

Soil Stem Auger

Laboratory Sample Types:

Geotechnical Lab

Analytical Chemistry Lab

Geotechnical & Analytical Chemistry Lab



6899 Pecos Street, Unit C
Denver, Colorado 80221

CLIENT: Kerr-McGee Oil & Gas Onshore, LP

LOGGED BY: Clayton Robertson

PROJECT MANAGER: Robert Cornez

DRILLING CONTRACTOR: Tasman Geosciences, Inc.

DRILLING EQUIPMENT: AMS Powerprobe 9300-SK

DRILL BIT SIZE (INCHES): 2.375"

DATE STARTED - COMPLETED: 12/4/2014

TOTAL WELL DEPTH (FT. BGS): 10.5

DEPTH TO WATER (FT. BGS): 7

Reynolds Cattle Company GU 1

BORING / WELL ID: BH02

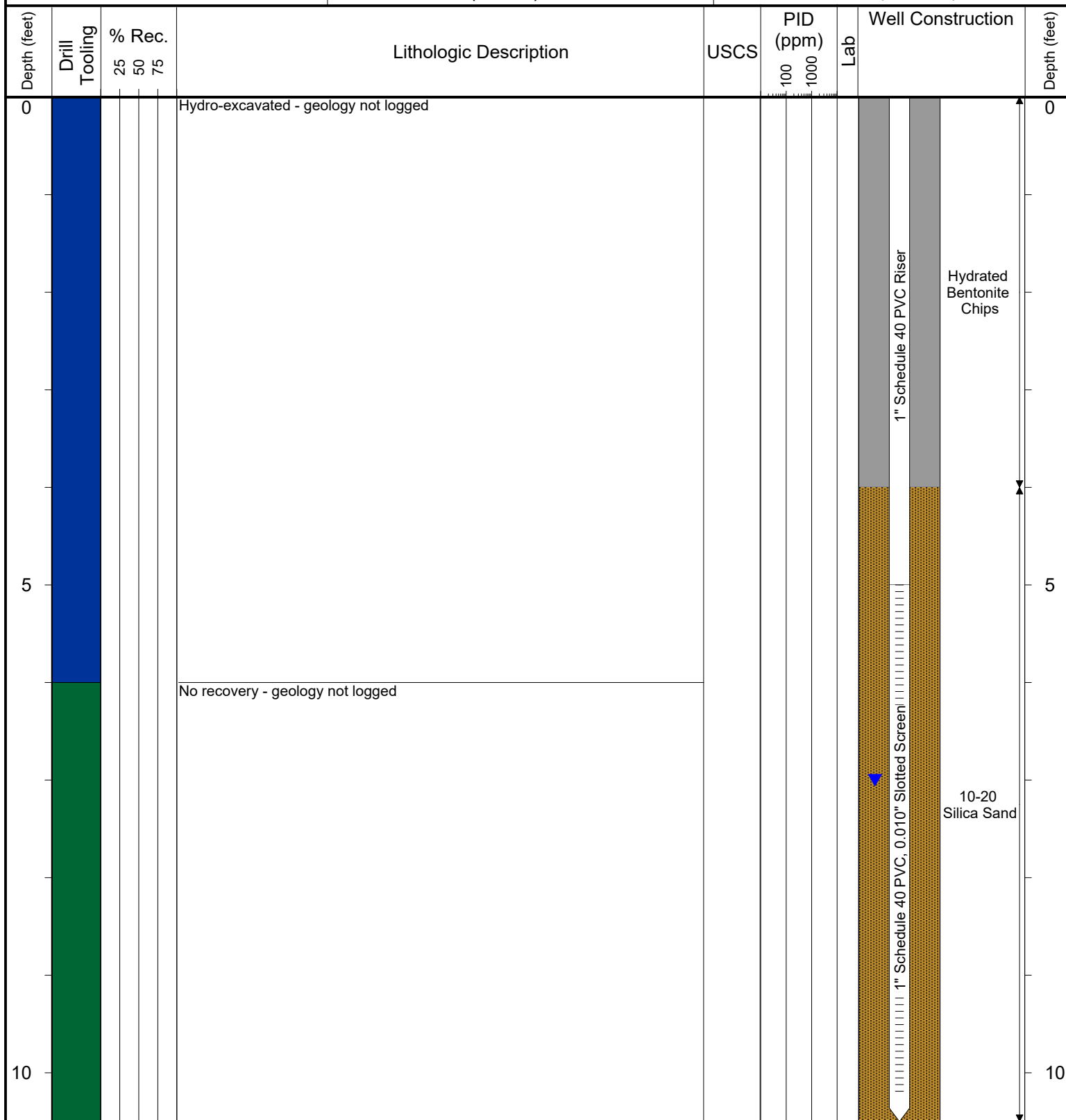
COMPLETION: Flush-mount

NORTHING (CO STATE PLANE): 40.21449029

EASTING (CO STATE PLANE): -104.9475917

CASING ELEVATION (FT. AMSL): 4916.585

GROUND ELEVATION (FT. AMSL): 4916.82



Drilling / Sample Method:

Macro-Core

Hand Auger

Soil Stem Auger

Expendable Well Tip

Hydrovac

Laboratory Sample Types:

Geotechnical Lab

Analytical Chemistry Lab

Geotechnical & Analytical Chemistry Lab



6899 Pecos Street, Unit C
Denver, Colorado 80221

CLIENT: Kerr-McGee Oil & Gas Onshore, LP

LOGGED BY: Clayton Robertson

PROJECT MANAGER: Robert Cornez

DRILLING CONTRACTOR: Tasman Geosciences, Inc.

DRILLING EQUIPMENT: AMS Powerprobe 9300-SK

DRILL BIT SIZE (INCHES): 2.375"

DATE STARTED - COMPLETED: 12/4/2014

TOTAL WELL DEPTH (FT. BGS): 10.5

DEPTH TO WATER (FT. BGS): 7

Reynolds Cattle Company GU 1

BORING / WELL ID: BH03

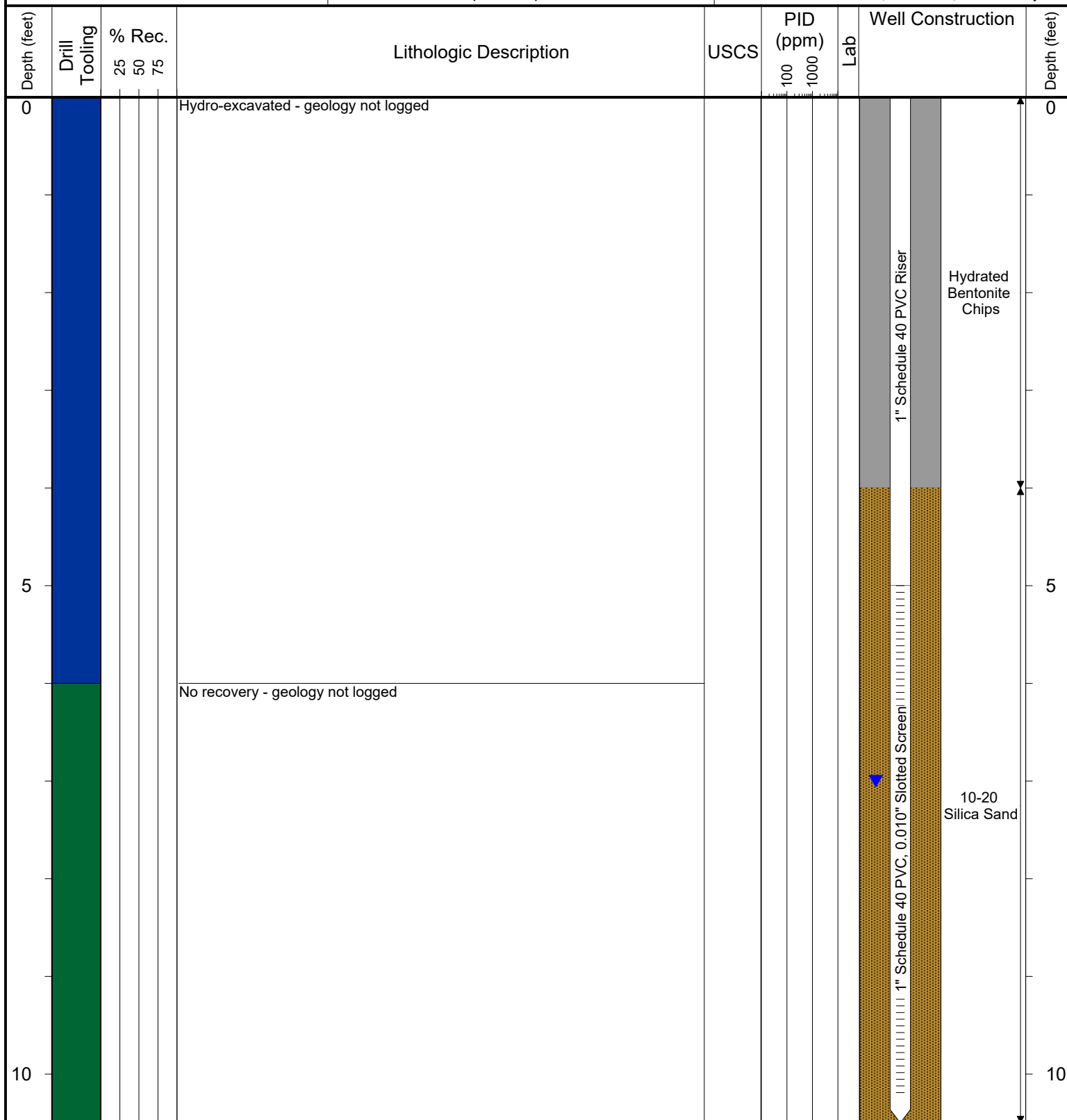
COMPLETION: Flush-mount

NORTHING (CO STATE PLANE): Not Surveyed

EASTING (CO STATE PLANE): Not Surveyed

CASING ELEVATION (FT. AMSL): Not Surveyed

GROUND ELEVATION (FT. AMSL): Not Surveyed



Drilling / Sample Method:

Macro-Core

Hand Auger

Soil Stem Auger

Expendable Well Tip

Hydrovac

Laboratory Sample Types:

Geotechnical Lab

Analytical Chemistry Lab

Geotechnical & Analytical Chemistry Lab



6899 Pecos Street, Unit C
Denver, Colorado 80221

CLIENT: Kerr-McGee Oil & Gas Onshore, LP

LOGGED BY: Brandon LeVasseur

PROJECT MANAGER: Robert Cornez

DRILLING CONTRACTOR: Tasman Geosciences, Inc.

DRILLING EQUIPMENT: AMS Powerprobe 9300-SK

DRILL BIT SIZE (INCHES): 2.375"

DATE STARTED - COMPLETED: 4/23/2015

TOTAL WELL DEPTH (FT. BGS): 16

DEPTH TO WATER (FT. BGS): 10.2

Reynolds Cattle Company GU 1

BORING / WELL ID: BH03R

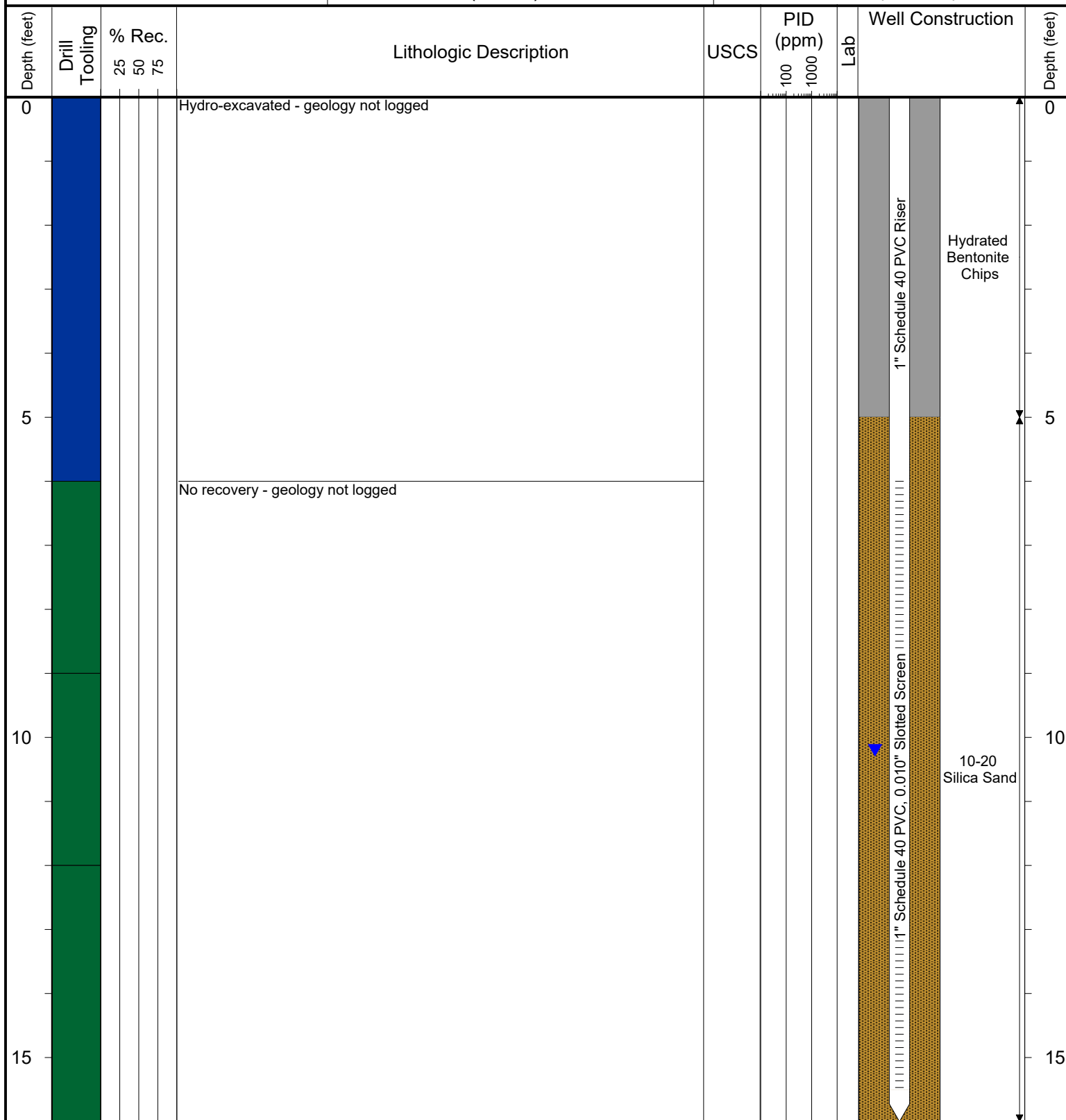
COMPLETION: Stick-up - 3.07'

NORTHING (CO STATE PLANE): 40.214546375

EASTING (CO STATE PLANE): -104.94760403

CASING ELEVATION (FT. AMSL): 4919.45

GROUND ELEVATION (FT. AMSL): 4916.38



Drilling / Sample Method:

Macro-Core

Hand Auger

Soil Stem Auger

Expendable Well Tip

Hydrovac

Laboratory Sample Types:

Geotechnical Lab

Analytical Chemistry Lab

Geotechnical & Analytical Chemistry Lab



6899 Pecos Street, Unit C
Denver, Colorado 80221

CLIENT: Kerr-McGee Oil & Gas Onshore, LP

LOGGED BY: Brandon LeVasseur

PROJECT MANAGER: Robert Cornez

DRILLING CONTRACTOR: Tasman Geosciences, Inc.

DRILLING EQUIPMENT: AMS Powerprobe 9300-SK

DRILL BIT SIZE (INCHES): 2.375"

DATE STARTED - COMPLETED: 4/23/2015

TOTAL WELL DEPTH (FT. BGS): 15.5

DEPTH TO WATER (FT. BGS): 10.2

Reynolds Cattle Company GU 1

BORING / WELL ID: BH04

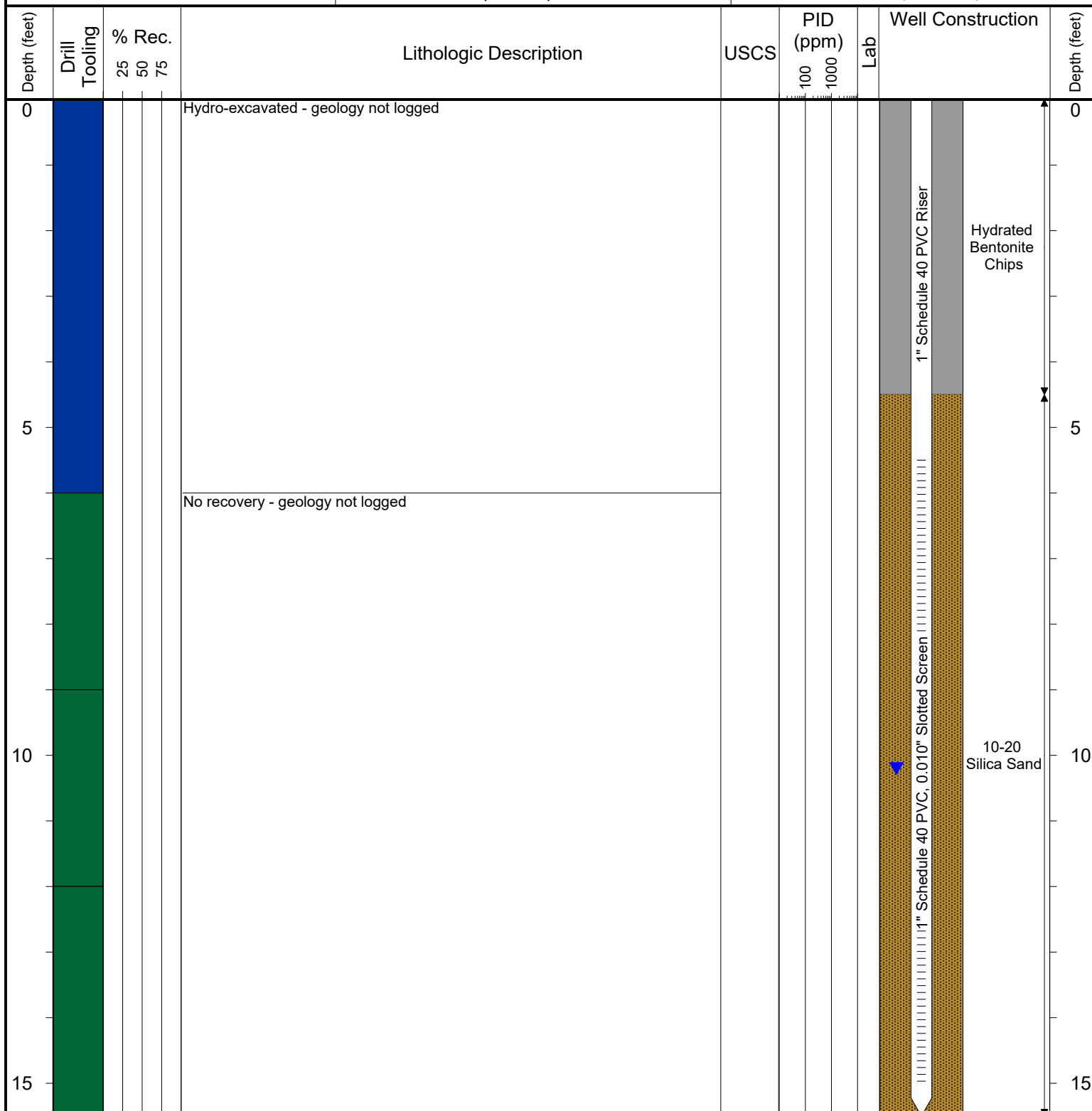
COMPLETION: Flush-mount

NORTHING (CO STATE PLANE): 40.214466603

EASTING (CO STATE PLANE): -104.94754938

CASING ELEVATION (FT. AMSL): 4916

GROUND ELEVATION (FT. AMSL): 4916.18



Drilling / Sample Method:

Macro-Core

Hand Auger

Soil Stem Auger

Expendable Well Tip

Hydrovac

Laboratory Sample Types:

Geotechnical Lab

Analytical Chemistry Lab

Geotechnical & Analytical Chemistry Lab



6899 Pecos Street, Unit C
Denver, Colorado 80221

CLIENT: Kerr-McGee Oil & Gas Onshore, LP

LOGGED BY: Brandon LeVasseur

PROJECT MANAGER: Robert Cornez

DRILLING CONTRACTOR: Tasman Geosciences, Inc.

DRILLING EQUIPMENT: AMS Powerprobe 9300-SK

DRILL BIT SIZE (INCHES): 2.375"

DATE STARTED - COMPLETED: 4/23/2015

TOTAL WELL DEPTH (FT. BGS): 15.5

DEPTH TO WATER (FT. BGS): 10.2

Reynolds Cattle Company GU 1

BORING / WELL ID: BH05

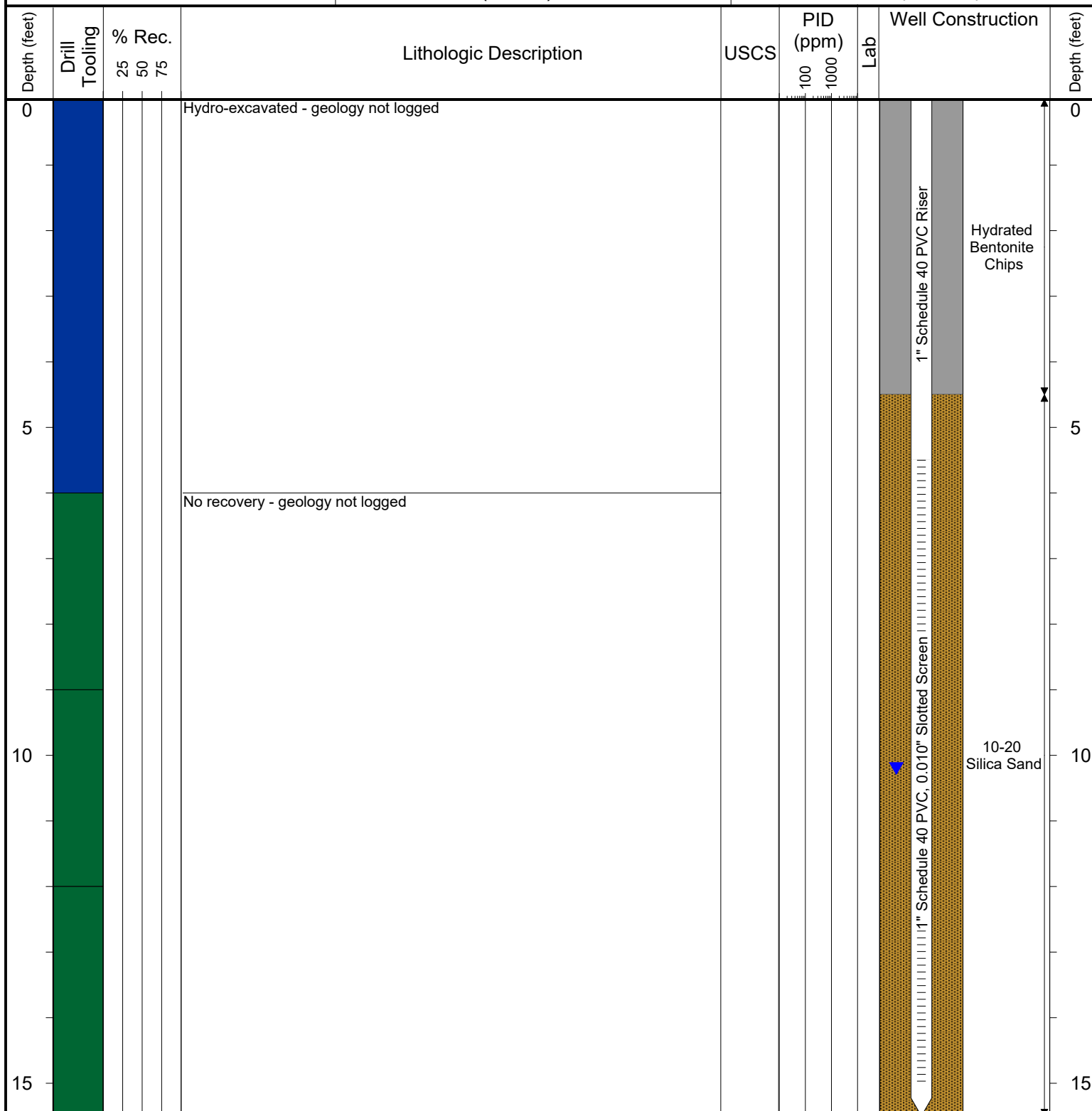
COMPLETION: Flush-mount

NORTHING (CO STATE PLANE): 40.214560734

EASTING (CO STATE PLANE): -104.94755224

CASING ELEVATION (FT. AMSL): 4919.57

GROUND ELEVATION (FT. AMSL): 4915.91



Drilling / Sample Method:

Macro-Core

Expendable Well Tip

Hand Auger

Hydrovac

Soil Stem Auger

Laboratory Sample Types:

Geotechnical Lab

Analytical Chemistry Lab

Geotechnical & Analytical Chemistry Lab



6899 Pecos Street, Unit C
Denver, Colorado 80221

CLIENT: Kerr-McGee Oil & Gas Onshore, LP

LOGGED BY: Brandon LeVasseur

PROJECT MANAGER: Robert Cornez

DRILLING CONTRACTOR: Tasman Geosciences, Inc.

DRILLING EQUIPMENT: AMS Powerprobe 9300-SK

DRILL BIT SIZE (INCHES): 2.375"

DATE STARTED - COMPLETED: 4/23/2015

TOTAL WELL DEPTH (FT. BGS): 15.5

DEPTH TO WATER (FT. BGS): 10.2

Reynolds Cattle Company GU 1

BORING / WELL ID: BH06

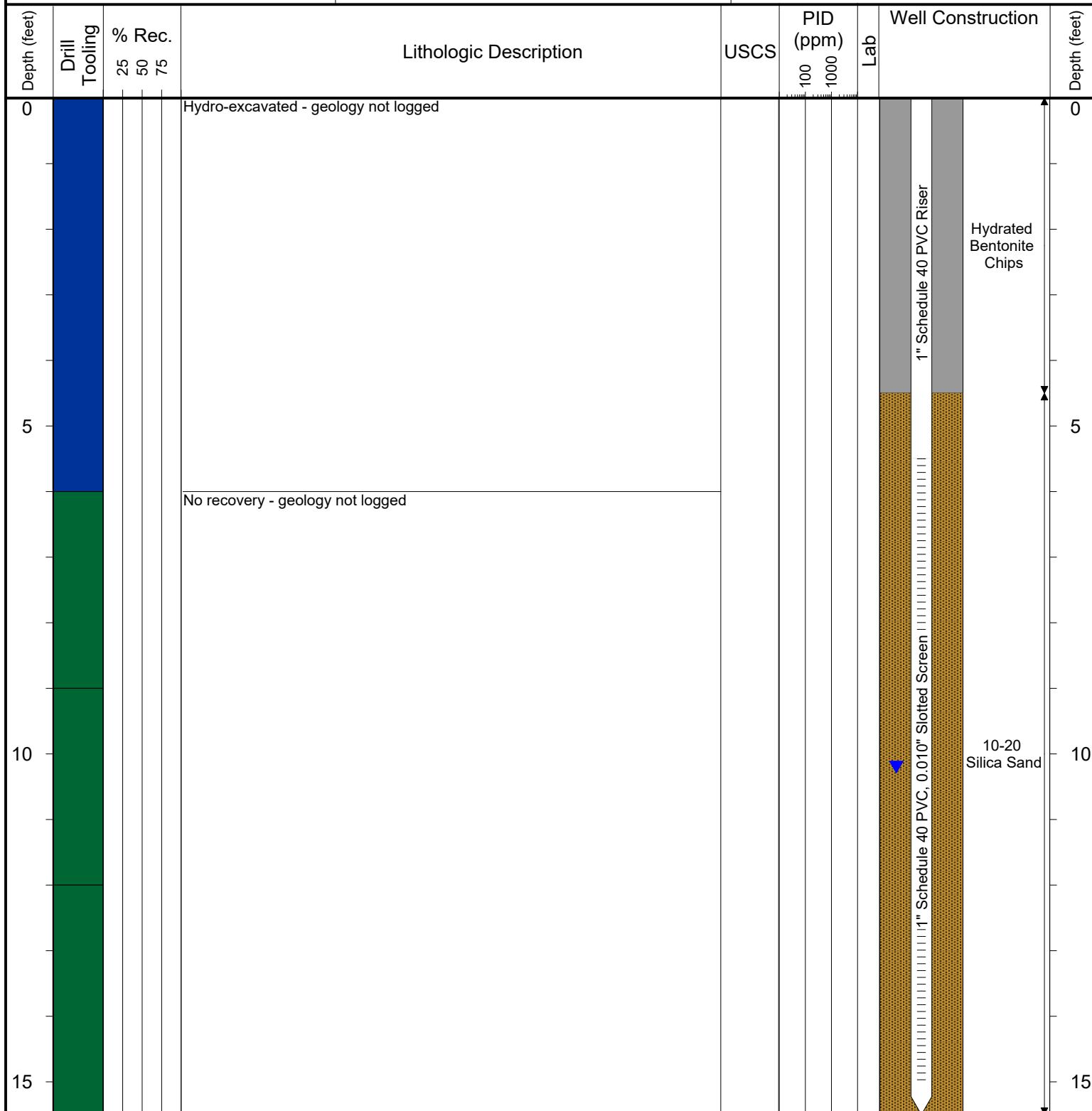
COMPLETION: Stick-up - 3.66'

NORTHING (CO STATE PLANE): 40.214563168

EASTING (CO STATE PLANE): -104.94778625

CASING ELEVATION (FT. AMSL): 4917.22

GROUND ELEVATION (FT. AMSL): Not Surveyed



Drilling / Sample Method:

Macro-Core

Hand Auger

Soil Stem Auger

Expendable Well Tip

Hydrovac

Laboratory Sample Types:

Geotechnical Lab

Analytical Chemistry Lab

Geotechnical & Analytical Chemistry Lab



6899 Pecos Street, Unit C
Denver, Colorado 80221

CLIENT: Kerr-McGee Oil & Gas Onshore, LP

LOGGED BY: Zach Mahaffey

PROJECT MANAGER: Robert Cornez

DRILLING CONTRACTOR: Tasman Geosciences, Inc.

DRILLING EQUIPMENT: AMS Powerprobe 9300-SK

DRILL BIT SIZE (INCHES): 2.375"

DATE STARTED - COMPLETED: 10/28/2016

TOTAL WELL DEPTH (FT. BGS): 16

DEPTH TO WATER (FT. BGS): 11.69 (11/21/2016 new dig ground)

Reynolds Cattle Company GU 1

BORING / WELL ID: BH06R

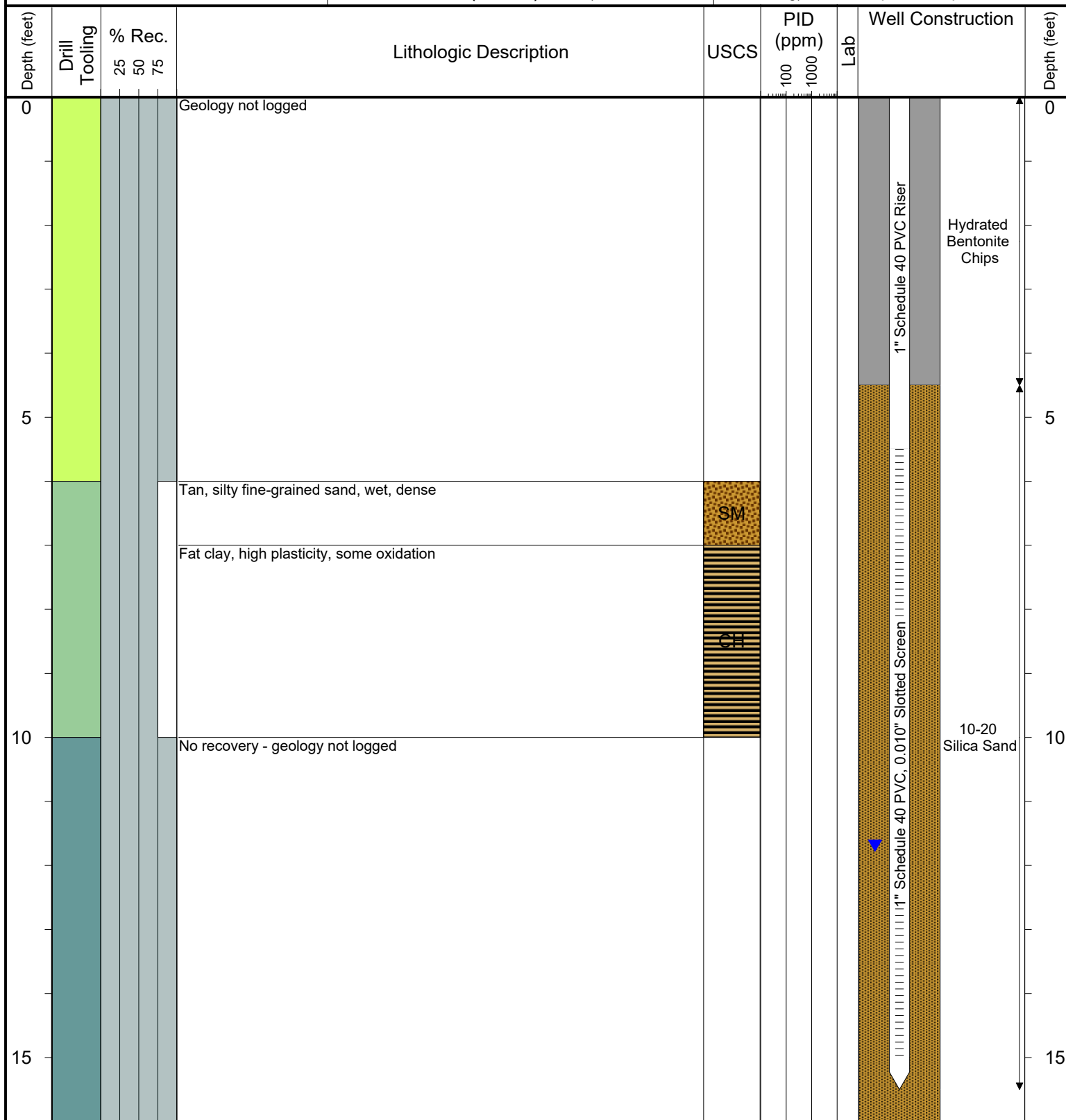
COMPLETION: Stick-up - 2.84'

NORTHING (CO STATE PLANE): 40.214588748

EASTING (CO STATE PLANE): -104.9477955

CASING ELEVATION (FT. AMSL): 4920.67

GROUND ELEVATION (FT. AMSL): 4917.83



Drilling / Sample Method:

Macro-Core

Hand Auger

Soil Stem Auger

Expendable Well Tip

Hydrovac

Laboratory Sample Types:

Geotechnical Lab

Analytical Chemistry Lab

Geotechnical & Analytical Chemistry Lab



6899 Pecos Street, Unit C
Denver, Colorado 80221

CLIENT: Kerr-McGee Oil & Gas Onshore, LP

LOGGED BY: Mike Jahn, P. G.

PROJECT MANAGER: Robert Cornez

DRILLING CONTRACTOR: Tasman Geosciences, Inc.

DRILLING EQUIPMENT: AMS Powerprobe 9300-SK

DRILL BIT SIZE (INCHES): 2.375"

DATE STARTED - COMPLETED: 6/28/2017

TOTAL WELL DEPTH (FT. BGS): 16

DEPTH TO WATER (FT. BGS): 9.12 (7/19/2017) ▼

Reynolds Cattle Company GU 1

BORING / WELL ID: BH07

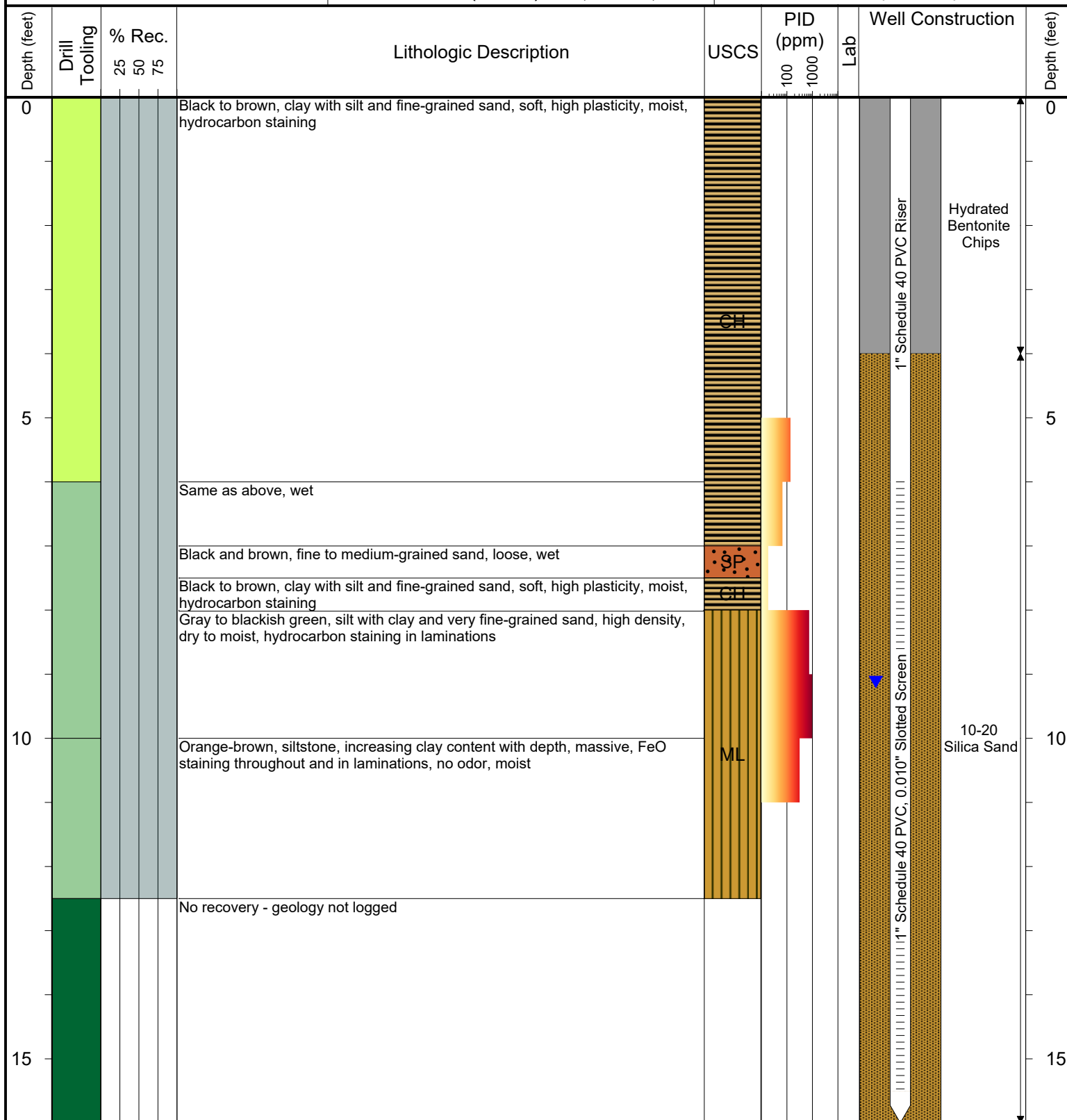
COMPLETION: Flush-mount

NORTHING (CO STATE PLANE): 40.214527706

EASTING (CO STATE PLANE): -104.94769526

CASING ELEVATION (FT. AMSL): 4916.57

GROUND ELEVATION (FT. AMSL): 4916.78



Drilling / Sample Method:

Macro-Core

Hand Auger

Soil Stem Auger

Expendable Well Tip

Hydrovac

Laboratory Sample Types:

Geotechnical Lab

Analytical Chemistry Lab

Geotechnical & Analytical Chemistry Lab



6899 Pecos Street, Unit C
Denver, Colorado 80221

CLIENT: Kerr-McGee Oil & Gas Onshore, LP

LOGGED BY: Mike Jahn, P. G.

PROJECT MANAGER: Robert Cornez

DRILLING CONTRACTOR: Tasman Geosciences, Inc.

DRILLING EQUIPMENT: AMS Powerprobe 9300-SK

DRILL BIT SIZE (INCHES): 2.375"

DATE STARTED - COMPLETED: 6/28/2017

TOTAL WELL DEPTH (FT. BGS): 16

DEPTH TO WATER (FT. BGS): 9.44 (7/19/2017) ▼

Reynolds Cattle Company GU 1

BORING / WELL ID: BH08

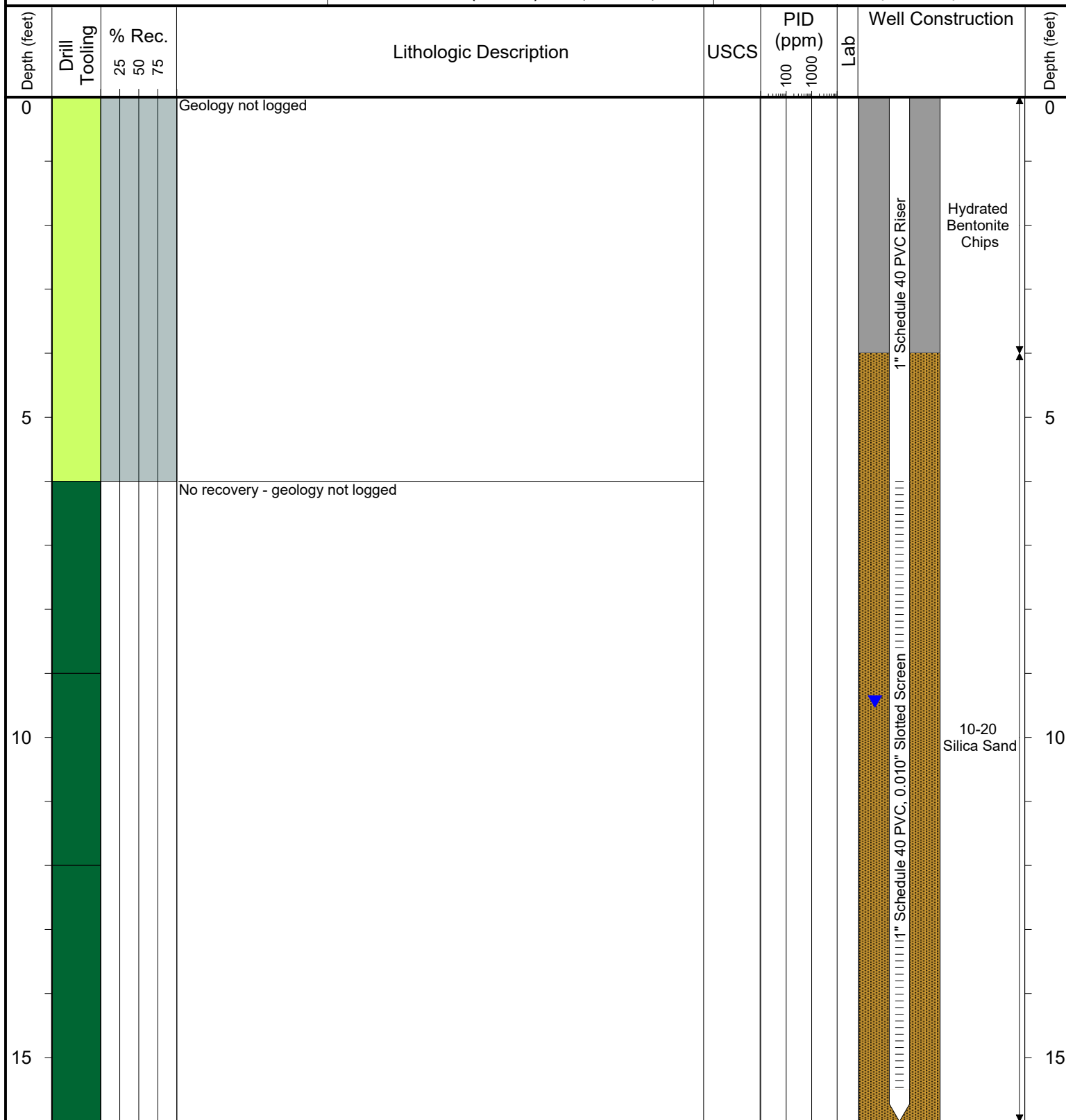
COMPLETION: Flush-mount

NORTHING (CO STATE PLANE): 40.214562572

EASTING (CO STATE PLANE): -104.94767051

CASING ELEVATION (FT. AMSL): 4916.64

GROUND ELEVATION (FT. AMSL): 4916.93



Drilling / Sample Method:

Macro-Core
Expendable Well Tip

Hand Auger
Hydrovac

Soil Stem Auger

Laboratory Sample Types:

Geotechnical Lab

Analytical Chemistry Lab

Geotechnical & Analytical Chemistry Lab