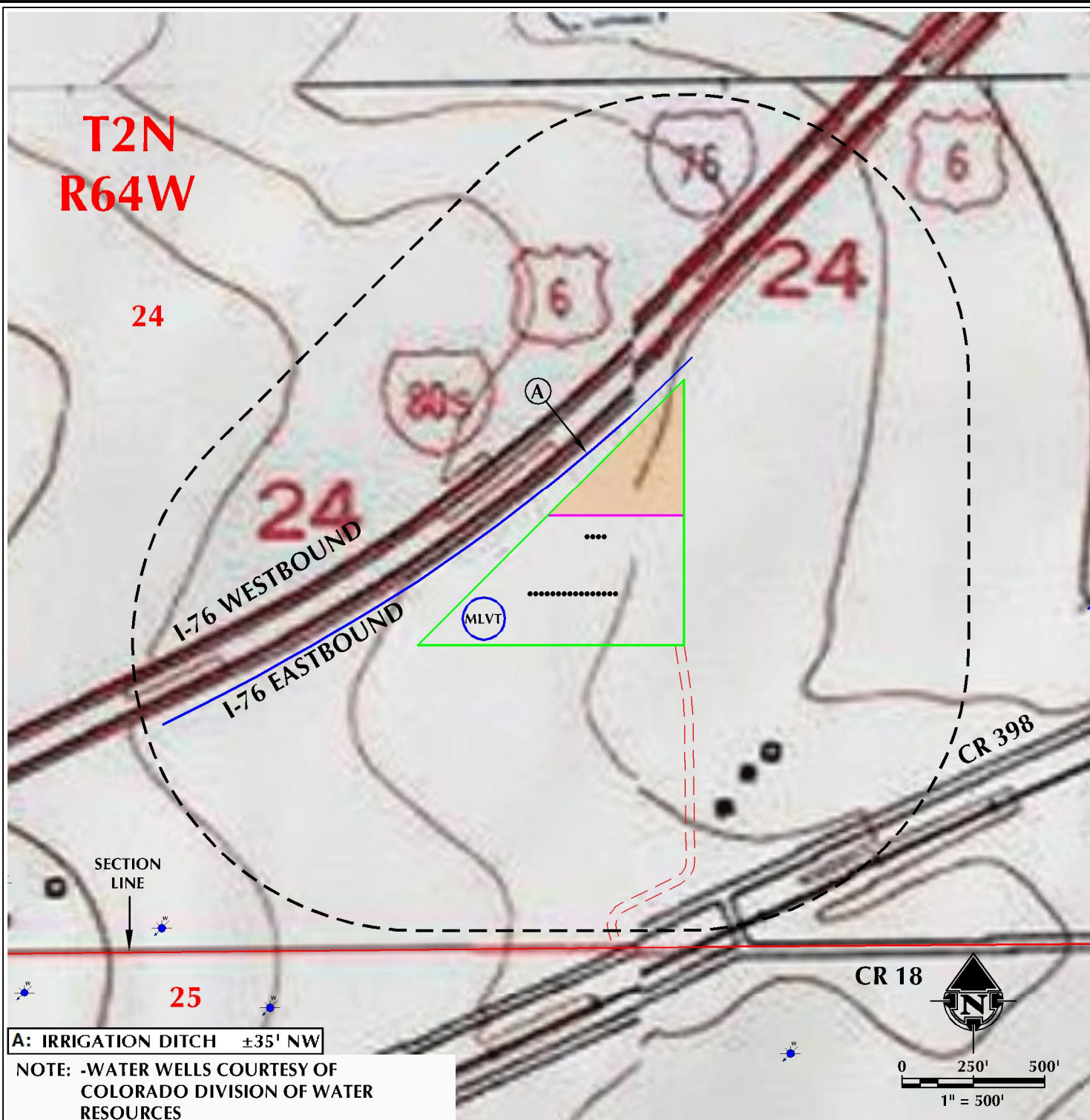


K:\VERDAD\2017_138_BOYD_HELEN_T2N_R64W_SEC_24\DWG\ARNOLD_BOYD_HELEN_20_WELL\BOYD_HELEN.dwg, 1/10/2018 4:01:18 PM, sharon



LEGEND

- PROPOSED WELL
- ⊙ WATER WELL
- - - ACCESS ROAD

- ▭ DISTURBANCE AREA
- ▭ PROPOSED FACILITY
- ▭ 1000' DISTURBANCE BUFFER

*ALL DISTANCES MEASURED FROM EDGE OF DISTURBANCE.

- == ROAD - IMPROVED - EXISTING
- - - ROAD - PRIMITIVE - EXISTING
- == ROAD - HIGHWAY - EXISTING

PAD - ARNOLD 02N-64W-24

HYDROLOGY MAP
BOYD 24-1H, BOYD 24-2H, BOYD 24-3H, BOYD 24-4H,
HELEN 24-3H, HELEN 24-4H, HELEN 24-5H, HELEN 24-6H,
HELEN 24-7H, HELEN 24-8H, HELEN 24-9H, HELEN 24-10H,
HELEN 24-11H, HELEN 24-12H, HELEN 24-13H, HELEN 24-14H,
HELEN 24-15H, HELEN 24-16H, HELEN 24-17H & HELEN 24-18H
LOCATED IN SECTION 24, T2N, R64W, 6TH P.M.
WELD COUNTY, COLORADO



5950 Cedar Springs Road, Suite 200
Dallas, Texas 75235



CONSULTING, LLC

SHERIDAN OFFICE
1095 Saberton Avenue
Sheridan, Wyoming 82801
Phone 307-674-0609

LOVELAND OFFICE
1635 Foxtrail Drive, Suite 204
Loveland, Colorado 80538
Phone 970-776-4331

SCALE:	1" = 500ft	NAD83 CO-Nft
DRAWN:	SRS	DATE: 10/30/17
REVISED:	GLK	DATE: 1/10/18