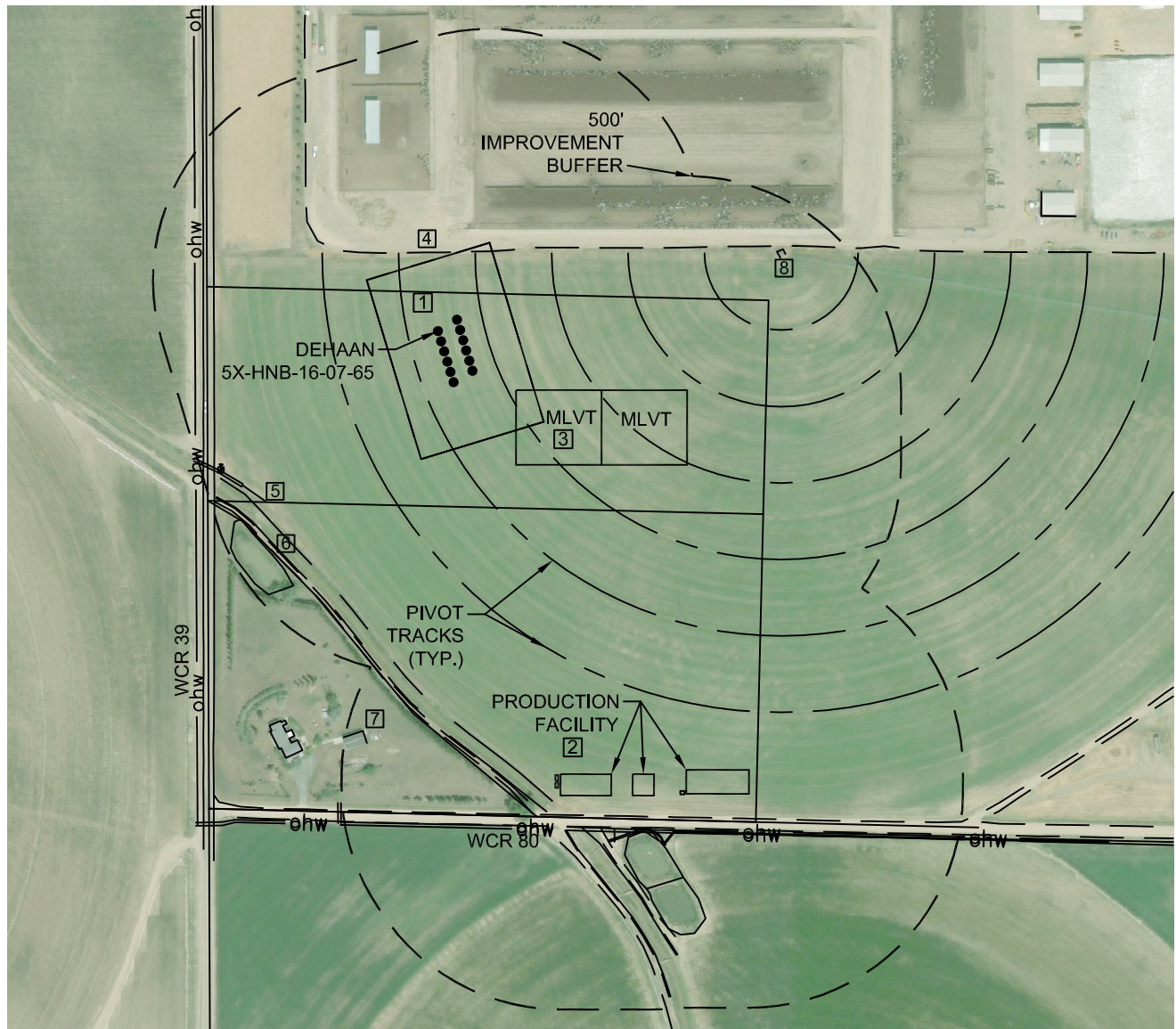


LOCATION DRAWING DEHAAN 7N65W16 SOUTH PAD

SECTION: 17
TOWNSHIP: 7N
RANGE: 65W
6TH P.M.
WELD COUNTY, CO



IMPROVEMENTS
(MEASUREMENTS ARE FROM THE PROPOSED DEHAAN
5X-HNB-16-07-65 WELL LOCATION)

- ① PROPERTY LINE: 91' N, 407' S, 540' W & 771' E
- ② PROPOSED PRODUCTION FACILITIES: 1075' SE, 1132' SE & 1179' SE
- ③ TEMPORARY MLVT PADS: 229' SE
- ④ ACCESS: 184' N, 524' W (WCR 39), 625' SW & 1126' S (WCR 80)
- ⑤ ABOVE GROUND UTILITY: 567' SW, 569' W & 1153' S
- ⑥ DITCH: 590' SW, 641' SW (POND) & 1264' SE (POND)
- ⑦ BUILDING: 951' SW
- ⑧ IRRIGATION PIVOT: 823' NE

LEGEND:

ohw OVERHEAD UTILITY LINE
- - - - - EDGE OF ROAD/ACCESS
- - - - - PROPERTY LINE
- - - - - DITCH
X FENCE LINE



Scale 1" = 400'
0 100 200 400