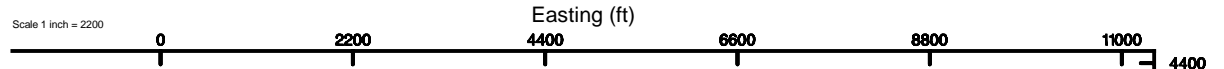


BONANZA CREEK OIL COMPANY

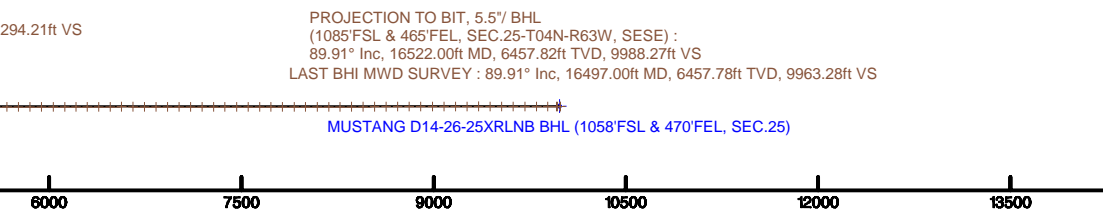
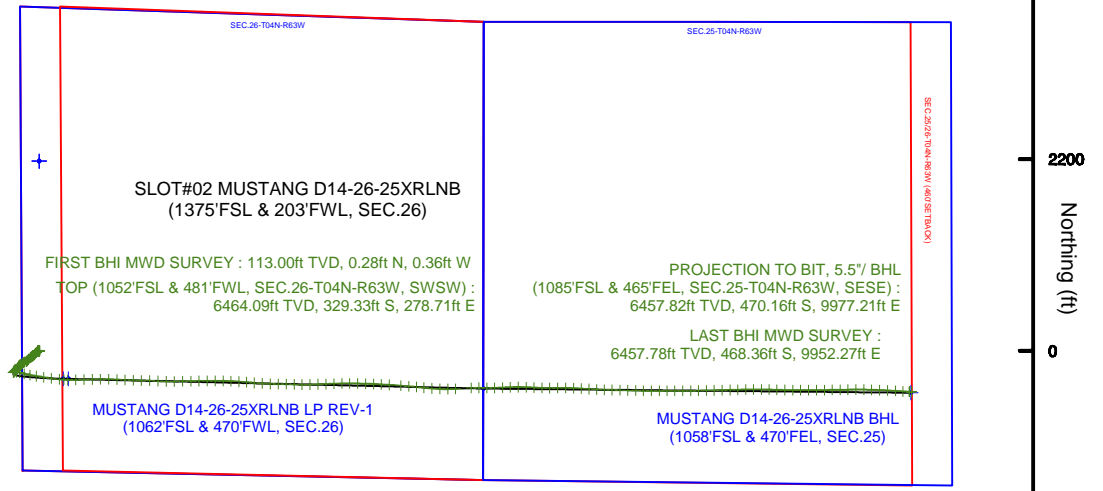
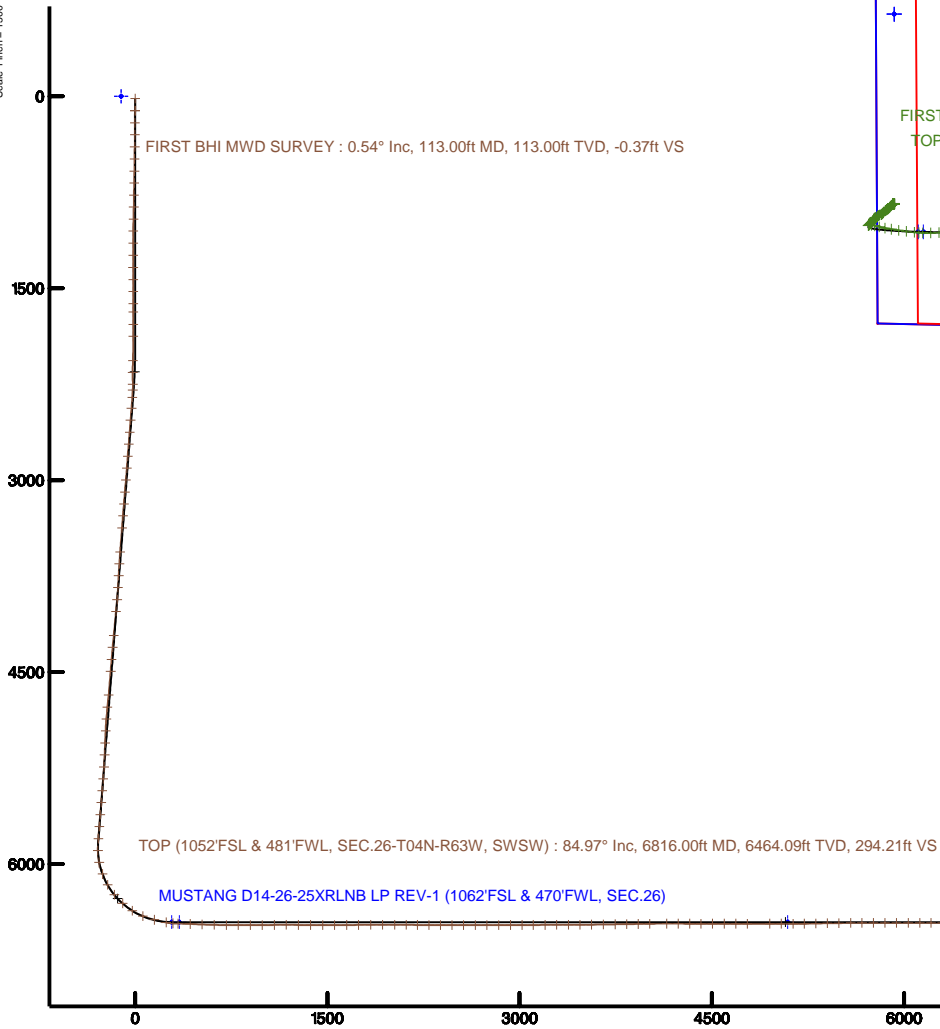
Location: COLORADO Slot: SLOT#02 MUSTANG D14-26-25XRLNB (1375'FSL & 203'FWL, SEC.26)
 Field: WELD COUNTY Well: MUSTANG D14-26-25XRLNB
 Facility: SEC.26-T04N-R63W Wellbore: MUSTANG D14-26-25XRLNB PWB

Plot reference wellpath is MUSTANG D14-26-25XRLNB PWB (REV-B.0)	Grid System: NAD83 / Lambert Colorado SP, Northern Zone (501), US feet
True vertical depths are referenced to XTREME 19 (17KB) (RKB)	* = Wellpath was transformed from a different geodetic datum
Measured depths are referenced to XTREME 19 (17KB) (RKB)	North Reference: True north
XTREME 19 (17KB) (RKB) to Mean Sea Level: 4767 feet	Scale: True distance
Mean Sea Level to Mud line (At Slot: SLOT#02 MUSTANG D14-26-25XRLNB (1375'FSL & 203'FWL, SEC.26)): 0 feet	Depths are in feet
Coordinates are in feet referenced to Slot	Created by: ingnjmr on 2018-01-31
	Database: Denver



Scale 1 inch = 1500

True Vertical Depth (ft)





Actual Wellpath Report

MUSTANG D14-26-25XRLNB AWB_awp

Page 1 of 8



REFERENCE WELLPATH IDENTIFICATION			
Operator	BONANZA CREEK OIL COMPANY	Slot	SLOT#02 MUSTANG D14-26-25XRLNB (1375'FSL & 203'FWL, SEC.26)
Area	COLORADO	Well	MUSTANG D14-26-25XRLNB
Field	WELD COUNTY	Wellbore	MUSTANG D14-26-25XRLNB AWB
Facility	SEC.26-T04N-R63W		

REPORT SETUP INFORMATION			
Projection System	NAD83 / Lambert Colorado SP, Northern Zone (501), US feet	Software System	WellArchitect® 5.0
North Reference	True	User	Ingmjmr
Scale	0.999957	Report Generated	1/31/2018 at 10:28:13 AM
Convergence at slot	0.71° East	Database/Source file	Denver/MUSTANG_D14-26-25XRLNB_AWB_awp.xml

WELLPATH LOCATION						
	Local coordinates		Grid coordinates		Geographic coordinates	
	North[ft]	East[ft]	Easting[US ft]	Northing[US ft]	Latitude	Longitude
Slot Location	-2175.71	4.65	3303059.38	1346672.19	40°16'47.710"N	104°24'49.510"W
Facility Reference Pt			3303028.08	1348847.58	40°17'09.210"N	104°24'49.570"W
Field Reference Pt			3224525.77	1254425.87	40°01'44.400"N	104°41'53.556"W

WELLPATH DATUM			
Calculation method	Minimum curvature	XTREME 19 (17'KB) (RKB) to Facility Vertical Datum	4767.00ft
Horizontal Reference Pt	Slot	XTREME 19 (17'KB) (RKB) to Mean Sea Level	4767.00ft
Vertical Reference Pt	XTREME 19 (17'KB) (RKB)	XTREME 19 (17'KB) (RKB) to Mud Line at Slot (SLOT#02 MUSTANG D14-26-25XRLNB (1375'FSL & 203'FWL, SEC.26))	4767.00ft
MD Reference Pt	XTREME 19 (17'KB) (RKB)	Section Origin	N 0.00, E 0.00 ft
Field Vertical Reference	Mean Sea Level	Section Azimuth	92.70°



Actual Wellpath Report

MUSTANG D14-26-25XRLNB AWB_awp

Page 2 of 8



REFERENCE WELLPATH IDENTIFICATION			
Operator	BONANZA CREEK OIL COMPANY	Slot	SLOT#02 MUSTANG D14-26-25XRLNB (1375'FSL & 203'FWL, SEC.26)
Area	COLORADO	Well	MUSTANG D14-26-25XRLNB
Field	WELD COUNTY	Wellbore	MUSTANG D14-26-25XRLNB AWB
Facility	SEC.26-T04N-R63W		

WELLPATH DATA (179 stations) † = interpolated/extrapolated station										
MD [ft]	Inclination [°]	Azimuth [°]	TVD [ft]	Vert Sect [ft]	North [ft]	East [ft]	Latitude	Longitude	DLS [°/100ft]	Comments
0.00†	0.000	307.950	0.00	0.00	0.00	0.00	40°16'47.710"N	104°24'49.510"W	0.00	
17.00	0.000	307.950	17.00	0.00	0.00	0.00	40°16'47.710"N	104°24'49.510"W	0.00	
113.00	0.540	307.950	113.00	-0.37	0.28	-0.36	40°16'47.713"N	104°24'49.515"W	0.56	FIRST BHI MWD SURVEY
207.00	0.500	301.320	206.99	-1.09	0.76	-1.06	40°16'47.718"N	104°24'49.524"W	0.08	
301.00	0.620	314.370	300.99	-1.83	1.33	-1.77	40°16'47.723"N	104°24'49.533"W	0.19	
395.00	0.840	289.940	394.98	-2.87	1.92	-2.78	40°16'47.729"N	104°24'49.546"W	0.40	
489.00	0.800	307.130	488.97	-4.07	2.55	-3.95	40°16'47.735"N	104°24'49.561"W	0.26	
584.00	1.150	298.330	583.96	-5.47	3.41	-5.32	40°16'47.744"N	104°24'49.579"W	0.40	
677.00	1.030	241.970	676.95	-7.03	3.46	-6.88	40°16'47.744"N	104°24'49.599"W	1.11	
772.00	1.210	241.000	771.93	-8.62	2.57	-8.51	40°16'47.735"N	104°24'49.620"W	0.19	
866.00	1.480	231.080	865.90	-10.37	1.33	-10.32	40°16'47.723"N	104°24'49.643"W	0.38	
960.00	1.680	240.340	959.87	-12.45	-0.12	-12.47	40°16'47.709"N	104°24'49.671"W	0.34	
1054.00	0.170	234.080	1053.85	-13.72	-0.88	-13.78	40°16'47.701"N	104°24'49.688"W	1.61	
1148.00	0.460	289.230	1147.85	-14.19	-0.84	-14.24	40°16'47.702"N	104°24'49.694"W	0.41	
1244.00	0.440	287.280	1243.85	-14.92	-0.60	-14.96	40°16'47.704"N	104°24'49.703"W	0.03	
1338.00	0.280	149.990	1337.85	-15.14	-0.70	-15.19	40°16'47.703"N	104°24'49.706"W	0.72	
1432.00	0.340	176.680	1431.84	-14.99	-1.17	-15.06	40°16'47.698"N	104°24'49.704"W	0.16	
1526.00	0.350	156.910	1525.84	-14.83	-1.72	-14.93	40°16'47.693"N	104°24'49.703"W	0.13	
1620.00	0.310	140.570	1619.84	-14.54	-2.18	-14.66	40°16'47.689"N	104°24'49.699"W	0.11	
1685.00	0.490	132.450	1684.84	-14.21	-2.50	-14.34	40°16'47.685"N	104°24'49.695"W	0.29	
1783.00	0.360	94.490	1782.84	-13.58	-2.81	-13.72	40°16'47.682"N	104°24'49.687"W	0.31	
1877.00	0.500	313.270	1876.84	-13.59	-2.55	-13.73	40°16'47.685"N	104°24'49.687"W	0.86	
2065.00	2.110	308.880	2064.78	-17.01	0.19	-17.02	40°16'47.712"N	104°24'49.730"W	0.86	
2158.00	1.730	180.470	2157.76	-18.34	-0.14	-18.36	40°16'47.709"N	104°24'49.747"W	3.72	
2252.00	0.870	51.220	2251.74	-17.75	-1.11	-17.82	40°16'47.699"N	104°24'49.740"W	2.53	
2296.00	1.540	268.920	2295.74	-18.09	-0.92	-18.15	40°16'47.701"N	104°24'49.744"W	5.21	
2354.00	5.190	235.290	2353.63	-20.95	-2.43	-21.09	40°16'47.686"N	104°24'49.782"W	6.90	
2440.00	7.030	226.280	2439.14	-27.67	-8.28	-28.09	40°16'47.628"N	104°24'49.872"W	2.41	
2533.00	6.950	222.620	2531.45	-35.20	-16.35	-36.01	40°16'47.548"N	104°24'49.975"W	0.49	
2627.00	7.020	221.510	2624.75	-42.45	-24.84	-43.67	40°16'47.465"N	104°24'50.073"W	0.16	



Actual Wellpath Report

MUSTANG D14-26-25XRLNB AWB_awp
Page 3 of 8



REFERENCE WELLPATH IDENTIFICATION			
Operator	BONANZA CREEK OIL COMPANY	Slot	SLOT#02 MUSTANG D14-26-25XRLNB (1375'FSL & 203'FWL, SEC.26)
Area	COLORADO	Well	MUSTANG D14-26-25XRLNB
Field	WELD COUNTY	Wellbore	MUSTANG D14-26-25XRLNB AWB
Facility	SEC.26-T04N-R63W		

WELLPATH DATA (179 stations)										
MD [ft]	Inclination [°]	Azimuth [°]	TVD [ft]	Vert Sect [ft]	North [ft]	East [ft]	Latitude	Longitude	DLS [°/100ft]	Comments
2722.00	6.830	223.860	2719.06	-49.81	-33.26	-51.43	40°16'47.381"N	104°24'50.174"W	0.36	
2816.00	6.870	223.560	2812.39	-57.17	-41.36	-59.18	40°16'47.301"N	104°24'50.274"W	0.06	
2910.00	6.180	223.620	2905.78	-64.16	-49.10	-66.54	40°16'47.225"N	104°24'50.369"W	0.73	
3003.00	6.380	234.200	2998.23	-71.48	-55.75	-74.19	40°16'47.159"N	104°24'50.467"W	1.26	
3098.00	5.880	239.060	3092.68	-79.66	-61.34	-82.64	40°16'47.104"N	104°24'50.576"W	0.76	
3191.00	5.990	234.280	3185.18	-87.43	-66.62	-90.67	40°16'47.052"N	104°24'50.680"W	0.54	
3286.00	5.600	232.920	3279.70	-94.88	-72.31	-98.39	40°16'46.995"N	104°24'50.779"W	0.44	
3380.00	5.680	232.790	3373.24	-101.97	-77.89	-105.75	40°16'46.940"N	104°24'50.874"W	0.09	
3568.00	5.920	229.850	3560.28	-116.22	-89.76	-120.57	40°16'46.823"N	104°24'51.066"W	0.20	
3661.00	6.240	221.260	3652.76	-122.88	-96.65	-127.57	40°16'46.755"N	104°24'51.156"W	1.04	
3755.00	5.900	209.440	3746.24	-128.24	-104.70	-133.32	40°16'46.675"N	104°24'51.230"W	1.38	
3849.00	5.700	221.140	3839.76	-133.32	-112.43	-138.76	40°16'46.599"N	104°24'51.300"W	1.27	
3943.00	5.880	241.940	3933.29	-140.36	-118.21	-146.08	40°16'46.542"N	104°24'51.395"W	2.23	
4037.00	5.680	250.600	4026.81	-148.81	-122.02	-154.72	40°16'46.504"N	104°24'51.506"W	0.95	
4225.00	5.900	250.330	4213.85	-166.36	-128.36	-172.59	40°16'46.442"N	104°24'51.737"W	0.12	
4319.00	5.970	246.940	4307.35	-175.23	-131.90	-181.64	40°16'46.407"N	104°24'51.854"W	0.38	
4413.00	6.000	231.340	4400.84	-183.32	-136.88	-189.98	40°16'46.357"N	104°24'51.961"W	1.73	
4507.00	5.970	231.000	4494.33	-190.66	-143.03	-197.61	40°16'46.297"N	104°24'52.060"W	0.05	
4694.00	6.180	244.870	4680.29	-206.82	-153.43	-214.28	40°16'46.194"N	104°24'52.275"W	0.79	
4788.00	6.240	244.020	4773.74	-215.78	-157.81	-223.46	40°16'46.151"N	104°24'52.393"W	0.12	
4882.00	6.510	230.400	4867.16	-224.20	-163.45	-232.15	40°16'46.095"N	104°24'52.505"W	1.63	
4976.00	6.160	203.880	4960.61	-229.97	-171.46	-238.30	40°16'46.016"N	104°24'52.585"W	3.11	
5070.00	6.780	203.050	5054.01	-233.72	-181.17	-242.52	40°16'45.920"N	104°24'52.639"W	0.67	
5164.00	6.240	207.620	5147.41	-237.80	-190.81	-247.06	40°16'45.824"N	104°24'52.698"W	0.80	
5258.00	6.680	215.000	5240.81	-242.88	-199.81	-252.56	40°16'45.735"N	104°24'52.769"W	1.00	
5352.00	6.520	228.380	5334.19	-249.62	-207.84	-259.69	40°16'45.656"N	104°24'52.861"W	1.64	
5446.00	6.450	228.000	5427.59	-257.19	-214.91	-267.60	40°16'45.586"N	104°24'52.963"W	0.09	
5539.00	6.730	223.480	5519.98	-264.46	-222.36	-275.23	40°16'45.513"N	104°24'53.061"W	0.63	
5634.00	6.610	231.710	5614.34	-272.23	-229.79	-283.36	40°16'45.439"N	104°24'53.166"W	1.01	
5727.00	6.330	227.800	5706.74	-279.90	-236.55	-291.36	40°16'45.372"N	104°24'53.269"W	0.56	



Actual Wellpath Report

MUSTANG D14-26-25XRLNB AWB_awp

Page 4 of 8



REFERENCE WELLPATH IDENTIFICATION			
Operator	BONANZA CREEK OIL COMPANY	Slot	SLOT#02 MUSTANG D14-26-25XRLNB (1375'FSL & 203'FWL, SEC.26)
Area	COLORADO	Well	MUSTANG D14-26-25XRLNB
Field	WELD COUNTY	Wellbore	MUSTANG D14-26-25XRLNB AWB
Facility	SEC.26-T04N-R63W		

WELLPATH DATA (179 stations) † = interpolated/extrapolated station										
MD [ft]	Inclination [°]	Azimuth [°]	TVD [ft]	Vert Sect [ft]	North [ft]	East [ft]	Latitude	Longitude	DLS [°/100ft]	Comments
5822.00	6.420	227.440	5801.16	-287.35	-243.66	-299.15	40°16'45.302"N	104°24'53.370"W	0.10	
5915.00	0.650	120.920	5893.97	-290.54	-247.45	-302.53	40°16'45.265"N	104°24'53.413"W	7.13	
6010.00	11.980	75.120	5988.25	-280.64	-245.19	-292.50	40°16'45.287"N	104°24'53.284"W	12.14	
6104.00	21.040	92.770	6078.33	-254.39	-243.50	-266.15	40°16'45.304"N	104°24'52.944"W	10.91	
6198.00	29.760	104.100	6163.21	-214.55	-250.01	-226.57	40°16'45.239"N	104°24'52.433"W	10.58	
6292.00	39.250	104.000	6240.59	-162.40	-262.92	-174.97	40°16'45.112"N	104°24'51.768"W	10.10	
6386.00	49.180	101.040	6307.88	-97.88	-276.96	-111.04	40°16'44.973"N	104°24'50.943"W	10.79	
6481.00	58.030	99.420	6364.20	-22.14	-290.47	-35.85	40°16'44.840"N	104°24'49.973"W	9.42	
6575.00	68.010	98.170	6406.79	61.05	-303.22	46.83	40°16'44.714"N	104°24'48.906"W	10.68	
6669.00	75.850	97.630	6435.92	149.98	-315.48	135.28	40°16'44.592"N	104°24'47.765"W	8.36	
6763.00	78.750	94.800	6456.59	241.49	-325.39	226.42	40°16'44.495"N	104°24'46.589"W	4.26	
6816.00†	84.968	93.817	6464.09	293.90	-329.33	278.71	40°16'44.456"N	104°24'45.914"W	11.88	TOP (1052'FSL & 481'FWL, SEC.26-T04N-R63W, SWSW)
6857.00	89.780	93.070	6465.97	334.85	-331.79	319.58	40°16'44.431"N	104°24'45.387"W	11.88	
6951.00	87.260	88.360	6468.40	428.72	-332.96	413.51	40°16'44.420"N	104°24'44.175"W	5.68	
7046.00	87.570	87.560	6472.68	523.30	-329.58	508.35	40°16'44.453"N	104°24'42.951"W	0.90	
7140.00	88.650	89.110	6475.78	616.97	-326.85	602.26	40°16'44.480"N	104°24'41.740"W	2.01	
7234.00	89.600	89.350	6477.22	710.79	-325.59	696.24	40°16'44.492"N	104°24'40.527"W	1.04	
7328.00	89.420	90.580	6478.02	804.68	-325.53	790.23	40°16'44.493"N	104°24'39.314"W	1.32	
7422.00	90.430	92.660	6478.15	898.65	-328.19	884.19	40°16'44.467"N	104°24'38.102"W	2.46	
7515.00	90.680	92.960	6477.25	991.65	-332.75	977.07	40°16'44.422"N	104°24'36.904"W	0.42	
7609.00	90.650	91.830	6476.16	1085.64	-336.68	1070.98	40°16'44.383"N	104°24'35.692"W	1.20	
7703.00	89.660	90.720	6475.90	1179.61	-338.77	1164.95	40°16'44.362"N	104°24'34.479"W	1.58	
7797.00	89.880	92.290	6476.28	1273.58	-341.24	1258.92	40°16'44.338"N	104°24'33.267"W	1.69	
7892.00	89.750	92.990	6476.59	1368.58	-345.61	1353.82	40°16'44.294"N	104°24'32.043"W	0.75	
7986.00	89.660	91.350	6477.07	1462.57	-349.17	1447.74	40°16'44.259"N	104°24'30.831"W	1.75	
8080.00	90.430	89.380	6477.00	1556.49	-349.77	1541.74	40°16'44.253"N	104°24'29.618"W	2.25	
8174.00	90.060	88.480	6476.59	1650.29	-348.02	1635.72	40°16'44.270"N	104°24'28.405"W	1.04	
8268.00	90.580	90.050	6476.07	1744.11	-346.81	1729.71	40°16'44.282"N	104°24'27.193"W	1.76	
8362.00	90.150	88.170	6475.47	1837.92	-345.35	1823.69	40°16'44.297"N	104°24'25.980"W	2.05	
8455.00	90.430	89.620	6475.00	1930.71	-343.56	1916.67	40°16'44.314"N	104°24'24.781"W	1.59	



Actual Wellpath Report

MUSTANG D14-26-25XRLNB AWB_awp

Page 5 of 8



REFERENCE WELLPATH IDENTIFICATION			
Operator	BONANZA CREEK OIL COMPANY	Slot	SLOT#02 MUSTANG D14-26-25XRLNB (1375'FSL & 203'FWL, SEC.26)
Area	COLORADO	Well	MUSTANG D14-26-25XRLNB
Field	WELD COUNTY	Wellbore	MUSTANG D14-26-25XRLNB AWB
Facility	SEC.26-T04N-R63W		

WELLPATH DATA (179 stations)										
MD [ft]	Inclination [°]	Azimuth [°]	TVD [ft]	Vert Sect [ft]	North [ft]	East [ft]	Latitude	Longitude	DLS [°/100ft]	Comments
8549.00	89.510	90.040	6475.05	2024.59	-343.28	2010.67	40°16'44.317"N	104°24'23.568"W	1.08	
8640.00	89.510	91.330	6475.83	2115.53	-344.37	2101.65	40°16'44.306"N	104°24'22.394"W	1.42	
8728.00	89.820	92.760	6476.34	2203.52	-347.51	2189.59	40°16'44.275"N	104°24'21.259"W	1.66	
8818.00	89.660	93.530	6476.75	2293.52	-352.44	2279.46	40°16'44.226"N	104°24'20.100"W	0.87	
8906.00	89.540	95.090	6477.36	2381.48	-359.06	2367.20	40°16'44.161"N	104°24'18.968"W	1.78	
8996.00	90.030	95.760	6477.70	2471.38	-367.57	2456.80	40°16'44.077"N	104°24'17.812"W	0.92	
9087.00	90.280	92.620	6477.46	2562.33	-374.21	2547.54	40°16'44.011"N	104°24'16.641"W	3.46	
9179.00	90.090	92.270	6477.16	2654.33	-378.14	2639.46	40°16'43.972"N	104°24'15.455"W	0.43	
9269.00	90.120	89.460	6476.99	2744.28	-379.50	2729.44	40°16'43.958"N	104°24'14.294"W	3.12	
9361.00	90.280	91.350	6476.67	2836.20	-380.15	2821.43	40°16'43.952"N	104°24'13.107"W	2.06	
9453.00	89.820	92.910	6476.59	2928.19	-383.57	2913.37	40°16'43.918"N	104°24'11.921"W	1.77	
9543.00	90.180	90.540	6476.59	3018.17	-386.28	3003.32	40°16'43.891"N	104°24'10.760"W	2.66	
9632.00	90.090	88.500	6476.38	3107.03	-385.53	3092.31	40°16'43.898"N	104°24'09.612"W	2.29	
9723.00	90.180	87.650	6476.17	3197.73	-382.47	3183.26	40°16'43.928"N	104°24'08.439"W	0.94	
9815.00	90.310	88.630	6475.77	3289.44	-379.49	3275.21	40°16'43.958"N	104°24'07.252"W	1.07	
9907.00	90.310	87.740	6475.28	3381.15	-376.57	3367.16	40°16'43.986"N	104°24'06.066"W	0.97	
9998.00	90.460	88.820	6474.66	3471.88	-373.84	3458.11	40°16'44.013"N	104°24'04.892"W	1.20	
10088.00	90.580	90.300	6473.85	3561.74	-373.15	3548.11	40°16'44.020"N	104°24'03.731"W	1.65	
10179.00	90.920	91.010	6472.66	3652.67	-374.19	3639.09	40°16'44.010"N	104°24'02.557"W	0.87	
10271.00	90.800	91.380	6471.28	3744.63	-376.11	3731.06	40°16'43.991"N	104°24'01.371"W	0.42	
10361.00	90.860	93.160	6469.97	3834.61	-379.67	3820.98	40°16'43.955"N	104°24'00.211"W	1.98	
10451.00	91.020	92.960	6468.50	3924.60	-384.48	3910.84	40°16'43.908"N	104°23'59.051"W	0.28	
10542.00	90.980	93.430	6466.91	4015.58	-389.55	4001.68	40°16'43.857"N	104°23'57.879"W	0.52	
10674.00	89.850	95.000	6465.95	4147.53	-399.25	4133.31	40°16'43.761"N	104°23'56.181"W	1.47	
10765.00	89.910	94.690	6466.14	4238.46	-406.94	4223.99	40°16'43.685"N	104°23'55.011"W	0.35	
10853.00	89.690	95.200	6466.45	4326.39	-414.52	4311.66	40°16'43.610"N	104°23'53.880"W	0.63	
10940.00	90.090	94.980	6466.62	4413.32	-422.24	4398.32	40°16'43.534"N	104°23'52.762"W	0.52	
11032.00	89.970	94.790	6466.57	4505.25	-430.07	4489.98	40°16'43.456"N	104°23'51.579"W	0.24	
11123.00	90.030	92.970	6466.57	4596.23	-436.23	4580.77	40°16'43.395"N	104°23'50.408"W	2.00	
11214.00	89.940	88.690	6466.59	4687.16	-437.55	4671.74	40°16'43.382"N	104°23'49.234"W	4.70	



Actual Wellpath Report

MUSTANG D14-26-25XRLNB AWB_awp

Page 6 of 8



REFERENCE WELLPATH IDENTIFICATION			
Operator	BONANZA CREEK OIL COMPANY	Slot	SLOT#02 MUSTANG D14-26-25XRLNB (1375'FSL & 203'FWL, SEC.26)
Area	COLORADO	Well	MUSTANG D14-26-25XRLNB
Field	WELD COUNTY	Wellbore	MUSTANG D14-26-25XRLNB AWB
Facility	SEC.26-T04N-R63W		

WELLPATH DATA (179 stations)										
MD [ft]	Inclination [°]	Azimuth [°]	TVD [ft]	Vert Sect [ft]	North [ft]	East [ft]	Latitude	Longitude	DLS [°/100ft]	Comments
11303.00	90.030	87.200	6466.62	4775.85	-434.36	4760.68	40°16'43.413"N	104°23'48.087"W	1.68	
11480.00	90.090	87.140	6466.43	4952.02	-425.62	4937.46	40°16'43.499"N	104°23'45.806"W	0.05	
11569.00	89.690	89.200	6466.60	5040.74	-422.78	5026.41	40°16'43.527"N	104°23'44.658"W	2.36	
11661.00	89.850	91.960	6466.97	5132.67	-423.71	5118.40	40°16'43.518"N	104°23'43.471"W	3.01	
11750.00	90.920	88.290	6466.37	5221.56	-423.90	5207.38	40°16'43.516"N	104°23'42.323"W	4.30	
11840.00	91.200	86.900	6464.71	5311.19	-420.13	5297.28	40°16'43.553"N	104°23'41.163"W	1.58	
11930.00	90.950	87.970	6463.02	5400.79	-416.10	5387.18	40°16'43.592"N	104°23'40.003"W	1.22	
12020.00	90.710	90.570	6461.71	5490.61	-414.95	5477.15	40°16'43.604"N	104°23'38.842"W	2.90	
12112.00	90.990	91.920	6460.35	5582.57	-416.95	5569.12	40°16'43.584"N	104°23'37.656"W	1.50	
12201.00	90.090	92.750	6459.51	5671.56	-420.58	5658.04	40°16'43.548"N	104°23'36.509"W	1.38	
12290.00	90.060	91.940	6459.39	5760.56	-424.22	5746.96	40°16'43.511"N	104°23'35.361"W	0.91	
12379.00	89.780	90.110	6459.52	5849.52	-425.81	5835.94	40°16'43.495"N	104°23'34.213"W	2.08	
12469.00	90.060	89.120	6459.64	5939.39	-425.21	5925.94	40°16'43.501"N	104°23'33.052"W	1.14	
12561.00	89.850	90.680	6459.72	6031.27	-425.05	6017.94	40°16'43.503"N	104°23'31.865"W	1.71	
12652.00	90.220	92.050	6459.66	6122.25	-427.21	6108.91	40°16'43.481"N	104°23'30.691"W	1.56	
12740.00	90.220	93.730	6459.32	6210.24	-431.65	6196.79	40°16'43.437"N	104°23'29.557"W	1.91	
12828.00	90.030	93.370	6459.13	6298.23	-437.10	6284.62	40°16'43.383"N	104°23'28.424"W	0.46	
12917.00	89.910	92.700	6459.18	6387.23	-441.81	6373.50	40°16'43.336"N	104°23'27.278"W	0.76	
13006.00	90.180	92.040	6459.11	6476.23	-445.49	6462.42	40°16'43.299"N	104°23'26.130"W	0.80	
13095.00	90.310	91.190	6458.73	6565.21	-448.00	6551.39	40°16'43.274"N	104°23'24.982"W	0.97	
13185.00	89.570	91.020	6458.82	6655.18	-449.74	6641.37	40°16'43.257"N	104°23'23.821"W	0.84	
13274.00	89.750	91.950	6459.35	6744.15	-452.04	6730.34	40°16'43.234"N	104°23'22.674"W	1.06	
13364.00	90.120	91.070	6459.45	6834.13	-454.41	6820.30	40°16'43.210"N	104°23'21.513"W	1.06	
13454.00	89.850	91.170	6459.48	6924.10	-456.17	6910.29	40°16'43.193"N	104°23'20.352"W	0.32	
13544.00	89.850	90.220	6459.71	7014.04	-457.27	7000.28	40°16'43.182"N	104°23'19.191"W	1.06	
13634.00	90.120	90.740	6459.73	7103.97	-458.02	7090.27	40°16'43.174"N	104°23'18.030"W	0.65	
13723.00	89.940	89.670	6459.69	7192.89	-458.34	7179.27	40°16'43.170"N	104°23'16.881"W	1.22	
13813.00	90.060	89.540	6459.69	7282.76	-457.72	7269.27	40°16'43.176"N	104°23'15.720"W	0.20	
13902.00	90.150	89.720	6459.52	7371.63	-457.14	7358.27	40°16'43.182"N	104°23'14.572"W	0.23	
13993.00	90.150	89.790	6459.29	7462.51	-456.75	7449.27	40°16'43.185"N	104°23'13.398"W	0.08	

TARGETS								
Name	TVD [ft]	North [ft]	East [ft]	Grid East [US ft]	Grid North [US ft]	Latitude	Longitude	Shape
SEC.25-T04N-R63W	0.00	2175.71	-4.65	3303028.08	1348847.58	40°17'09.210"N	104°24'49.570"W	polygon
SEC.26-T04N-R63W	0.00	2175.71	-4.65	3303028.08	1348847.58	40°17'09.210"N	104°24'49.570"W	polygon
MUSTANG D14-26-25XRLNB BHL (1058'FSL & 470'FEL, SEC.25)	6454.00	-479.68	9970.37	3313034.43	1346314.69	40°16'42.950"N	104°22'40.870"W	point
MUSTANG D14-26-25XRLNB LP (1062'FSL & 531'FWL, SEC.26)	6454.00	-319.78	330.17	3303393.43	1346356.50	40°16'44.550"N	104°24'45.250"W	point
MUSTANG D14-26-25XRLNB LP REV-1 (1062'FSL & 470'FWL, SEC.26)	6454.00	-319.78	269.17	3303332.44	1346355.75	40°16'44.550"N	104°24'46.037"W	point
MUSTANG D14-26-25XRLNB MID-LATERAL TARGET (1048'FSL & 0'FEL, SEC.26)	6454.00	-431.58	5077.41	3308141.47	1346302.85	40°16'43.440"N	104°23'44.000"W	point
SEC.25/26-T04N-R63W (460'SETBACK)	6467.00	2175.71	-4.65	3303028.08	1348847.58	40°17'09.210"N	104°24'49.570"W	polygon

WELLPATH COMPOSITION - Ref Wellbore: MUSTANG D14-26-25XRLNB AWB Ref Wellpath: MUSTANG D14-26-25XRLNB AWB_awp				
Start MD [ft]	End MD [ft]	Positional Uncertainty Model	Log Name/Comment	Wellbore
17.00	1685.00	Custom BHI NaviTrak (Standard Rotating) (Rockies 0.03Gt model)	BHI NAVITRAK+SR+ROCKIES <113-1685>	MUSTANG D14-26-25XRLNB AWB
1685.00	16497.00	Custom BHI AutoTrak Curve (Short) (Rockies 0.03Gt model)	BHI ATCURVE+SHORT+ROCKIES <1783-16497>	MUSTANG D14-26-25XRLNB AWB
16497.00	16522.00	Blind Drilling (std)	Projection to bit	MUSTANG D14-26-25XRLNB AWB



Actual Wellpath Report

MUSTANG D14-26-25XRLNB AWB_awp
Page 8 of 8



REFERENCE WELLPATH IDENTIFICATION			
Operator	BONANZA CREEK OIL COMPANY	Slot	SLOT#02 MUSTANG D14-26-25XRLNB (1375'FSL & 203'FWL, SEC.26)
Area	COLORADO	Well	MUSTANG D14-26-25XRLNB
Field	WELD COUNTY	Wellbore	MUSTANG D14-26-25XRLNB AWB
Facility	SEC.26-T04N-R63W		

WELLPATH COMMENTS				
MD [ft]	Inclination [°]	Azimuth [°]	TVD [ft]	Comment
113.00	0.540	307.950	113.00	FIRST BHI MWD SURVEY
6816.00	84.968	93.817	6464.09	TOP (1052'FSL & 481'FWL, SEC.26-T04N-R63W, SWSW)
16497.00	89.910	94.130	6457.78	LAST BHI MWD SURVEY
16522.00	89.910	94.130	6457.82	PROJECTION TO BIT, 5.5" BHL (1085'FSL & 465'FEL, SEC.25-T04N-R63W, SESE)