



Bonanza Creek Energy

Surface Post Job Report

Mustang D14-26-25XRLNB

S:26 T:4N R:63W Weld CO

Quote #:

Execution #:





Bonanza Creek Energy

Attention: Mr. Joel Dill | (720) 633-5871 | JDill@Bonanzacrk.com

Bonanza Creek Energy | 410 17th Street Suite 1400 | Denver CO, 80202

Dear Mr. Joel Dill,

Thank you for the opportunity to provide cementing services on this well. BJ Services strives to achieve complete customer satisfaction. If you have any questions regarding the services or data provided, please contact BJ Services at any time.

Sincerely,
Jacob Ojeda
Field Engineer I | (763) 516-3012 | jacob.ojeda@bjsservices.com

Field Office 1716 East Allison Rd., Cheyenne WY, 82007
Phone: (307) 638-5585

Sales Office 999 18th St. Suite 1200 Denver, CO 80202
Phone: (281) 408-2361

Cementing Treatment



Start Date	12/12/2017	Well	Mustang D14-26-25XRLNB
End Date	12/12/2017	County	WELD
Client	BONANZA CREEK ENERGY	State/Province	CO
		API	05-123-44700
Service Supervisor	Wesley Bell		
District	Cheyenne, WY	Type of Job	Surface

WELL GEOMETRY

Type	ID (in)	OD (in)	Wt. (lb/ft)	MD (ft)	TVD (ft)	Excess(%)	Grade	Thread
Open Hole	13.50			1740.00	1740.00	30.00		
Casing	8.92	9.63	36.00	1,730.00	1,730.00			

Shoe Length (ft): 41

HARDWARE

Bottom Plug Used?	No		
Top Plug Used?	Yes		
Top Plug Provided By	Customer	Max Casing Pressure - Rated (psi)	3500
Top Plug Size	9 5/8"	Max Casing Pressure - Operated (psi)	1300
Centralizers Used	Yes	Pipe Movement	No
Centralizers Quantity	NA	Job Pumped Through	Casing
Centralizers Type	NA	Top Connection Thread	LTC
Landing Collar Depth (ft)	1,689	Top Connection Size	9 5/8

Cementing Treatment



CIRCULATION PRIOR TO JOB

Well Circulated By	Rig	Solids Present at End of Circulation	No
Circulation Prior to Job	Yes	10 sec SGS	NA
Circulation Time (min)	30	10 min SGS	NA
Circulation Rate (bpm)	NA	Flare Prior to/during the Cement Job	No
Circulation Volume (bbls)	NA	Gas Present	No
Lost Circulation Prior to Cement Job	No		
Mud Density In (ppg)	NA		
Mud Density Out (ppg)	NA		
PV Mud In	NA		
PV Mud Out	NA		
YP Mud In	NA		
YP Mud Out	NA		

TEMPERATURE

Ambient Temperature (°F)	40	Slurry Cement Temperature (°F)	50
Mix Water Temperature (°F)	50	Flow Line Temperature (°F)	NA

Cementing Treatment



BJ FLUID DETAILS

Fluid Type	Fluid Name	Density (ppg)	Yield (Cu Ft/sk)	H2O Req. (gals/sk)	Vol (sk)	Vol (Cu Ft)	Vol (bbls)
Spacer / Pre Flush / Flush	Water (Pre-flush)	8.3308					20.0000
Tail Slurry	S100-X2 (Primary)	14.5000	1.3901	6.78	790	1,098.0000	195.6000
Top-Out / Scavenger Slurry	S100-X2 (Top-Out)	14.5000	1.3901	6.78	151	209.0000	37.2000
Displacement Final	Water (Final)	8.3308				0.0000	110.6000
Displacement Final	OBM(Final)						20.0000

Fluid Type	Fluid Name	Component	Concentration	UOM
Tail Slurry	S100-X2 (Primary)	CEMENT, ASTM TYPE III	100.00	PCT
Tail Slurry	S100-X2 (Primary)	FOAM PREVENTER, FP-13L	0.03	GALS/SK
Top-Out / Scavenger Slurry	S100-X2 (Top-Out)	CEMENT, ASTM TYPE III	100.00	PCT
Top-Out / Scavenger Slurry	S100-X2 (Top-Out)	FOAM PREVENTER, FP-13L	0.03	GALS/SK

TREATMENT SUMMARY

Time	Fluid	Rate (bpm)	Fluid Vol. (bbls)	Pipe Pressure (psi)	Annulus Pressure (psi)	Comments
	Water (Pre-flush)	5.00	20.00			
	S100-X2 (Primary)	5.00	195.40			
	S100-X2 (Top-Out)	5.00	37.20			
	Water (Final)	5.00	130.60			

	Min	Max	Avg
Pressure (psi)	0	1300	650
Rate (bpm)	0	6	3

Cementing Treatment



DISPLACEMENT AND END OF JOB SUMMARY

Displaced By	BJ Services	Amount of Cement Returned/Reversed	50bbls
Calculated Displacement Volume (bbls)	130.6	Method Used to Verify Returns	Displacement
Actual Displacement Volume (bbls)	126	Amount of Spacer to Surface	0
Did Float Hold?	Yes	Pressure Left on Casing (psi)	0
Bump Plug	Yes	Amount Bled Back After Job	1
Bump Plug Pressure (psi)	1300	Total Volume Pumped (bbls)	347.5
Were Returns Planned at Surface	Yes	Top Out Cement Spotted	No
Cement returns During Job	Yes	Lost Circulation During Cement Job	No

CEMENT PLUG

Bottom of Cement Plug?	No	Wiper Balls Used?	No
		Plug Catcher	No

Customer Name Bonanza Creek
 Well Name Mustang D14-26-25XRLNB
 Job Type Surface

District Cheyenne
 Supervisor Wesley Bell
 Engineer Karl Engineer



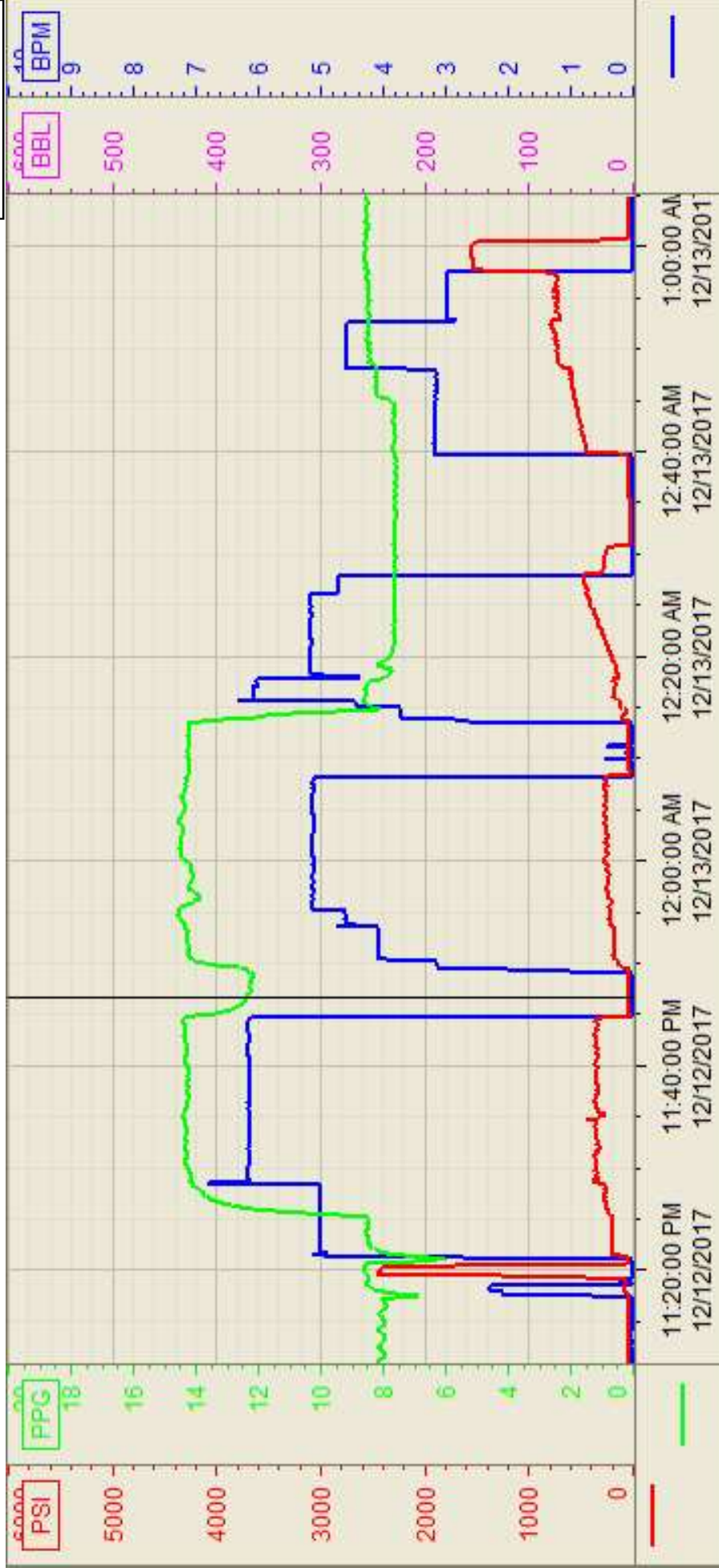
Seq No.	Start Date/Time	Category	Event	Equipment	Event ID	Density (lb/gal)	Pump Rate (bpm)	Pump Vol (bbls)	Pipe Pressure (psi)	Comments
1	12/12/2017 17:15	Mobilization	Arrive on Location		48					arrive on location, requested time 19:30
2	12/12/2017 17:20	StandBy	Customer		85					Wait on rig to run casing
3	12/12/2017 22:00	Operational	Rig Up	Cement Pump Truck	50					Spot and rig in all pump and bulk equipment
4	12/12/2017 23:00	Operational	Safety Meeting	Cement Pump Truck	53					Hold STEACS meeting with rig crew and pump crew. Review job procedure and job hazards
5	12/12/2017 23:30	Operational	Start Pumping	Cement Pump Truck	55	8.34	2	2	50	Fill lines with Fresh water
6	12/12/2017 23:32	Operational	Pressure Test	Cement Pump Truck	54	8.34			2000	Test all lines, no leaks
7	12/12/2017 23:34	Operational	Start Pumping	Cement Pump Truck	55	8.34	5	20	50	Pump 20bbls fresh water ahead
8	12/12/2017 23:38	Operational	Pumping Cement	Cement Pump Truck	61	14.5	5	195.5	200	Pump 195.5bbls of cement at 14.5ppg, Y: 1.39, WR: 6.78, Had to shut down during mixing, cellar pump was not keeping up with returns. Came back on line at 5bpm
9	12/13/2017 0:26	Operational	Drop Top Plug	Cement Pump Truck	63	8				Drop Top rubber plug 9 5/8"
10	12/13/2017 0:28	Operational	Pump Displacement	Cement Pump Truck	64	8	5	66	300	66bbls away, shut down. Leak on PLH. Tighten up and resume pumping 00:40
11	12/13/2017 0:40	Operational	Pump Displacement	Cement Pump Truck	64	8	5	44	800	110bbls away on displacement, cement to surface at 80bbls away, slow rate to 3bpm and switch to fresh water for displacement
12	12/13/2017 0:56	Operational	Land Plug	Cement Pump Truck	67	8.34	3	26	700	126bbls away on displacement land plug, final circulating pressure was 700psi, bumped up to 1300psi
13	12/13/2017 1:00	Operational	Check Floats	Cement Pump Truck	68	8.34			0	Check floats, 1bbl back to truck, floats held
14	12/13/2017 1:05	Operational	Rig Down	Cement Pump Truck	73	8.34				Rig down all BJ equipment, During rig down there was a .18bbl spill of muddy water on the ground. All material shoveled up and disposed of
15	12/13/2017 3:30	Mobilization	Leave Location		74					



Print Date/Time

12/13/2017 2:28:26 AM

Customer: Bonanza Creek
 Well Number: D14-26-25XRLNB
 Lease Info: Mustang



Name	Y value	X value/time stamp	Tag name Y
1 DS - Press (PSI)	30.4	12/12/2017 11:46:35 PM	CementerDS_DISCHARGE_PRESS_DIAL
2 DH - Density (PPG)	12.41	12/12/2017 11:46:33 PM	CementerDENSITY2_ACTUAL_RATE
3 Combined Rate	0.00 i.	12/12/2017 11:46:34 PM i.	CementerFlow_Combined
4			
5			

Source: Control1 2:28:20 AM