

HALLIBURTON

iCem[®] Service

TEP ROCKY MOUNTAIN LLC-EBUS

For: Terra Energy Partners

Date: Sunday, October 29, 2017

SR 412-12

API: 05-045-23449-00

Sincerely,

Grand Junction Cement Engineering

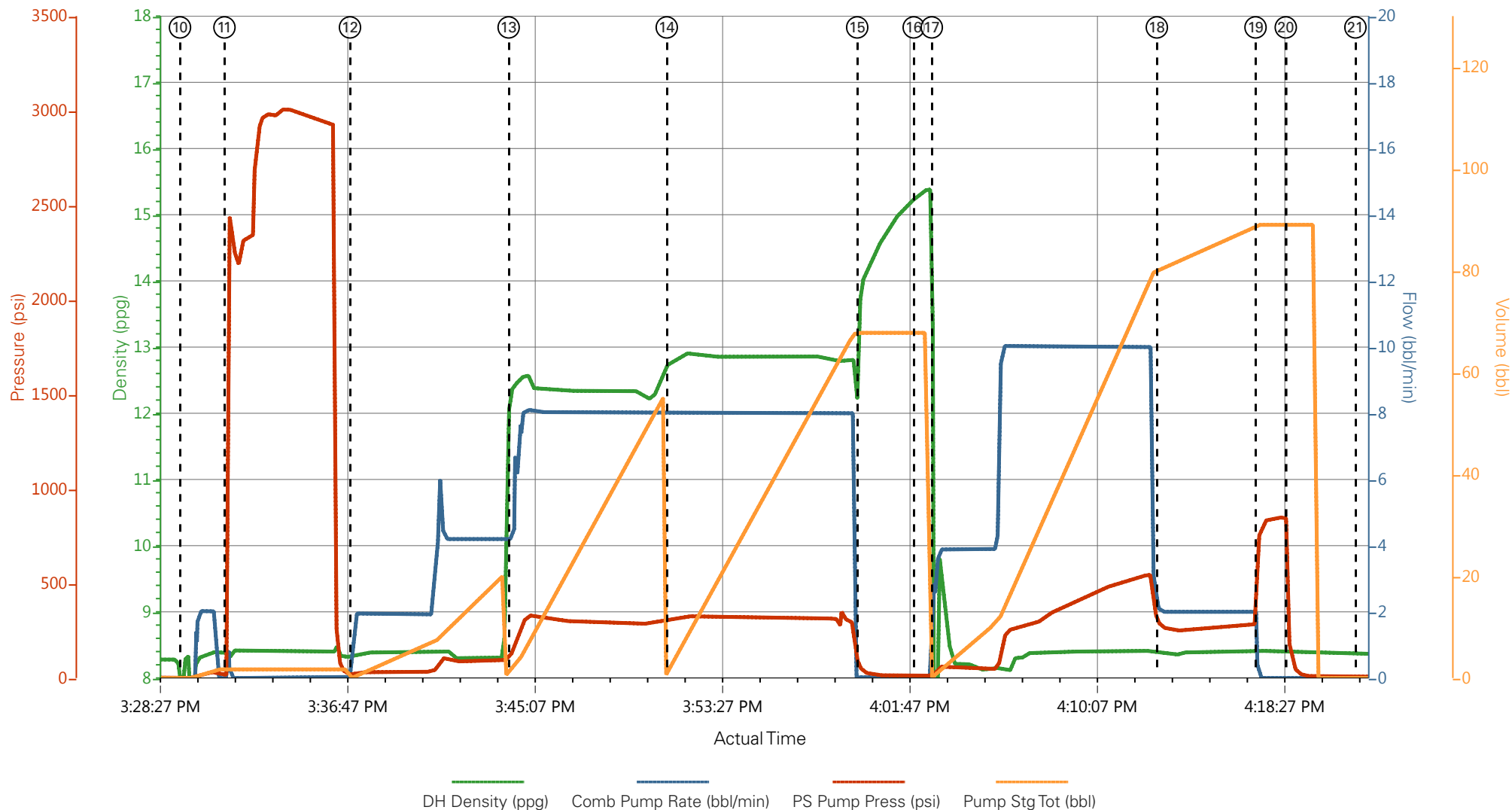
2.0 Real-Time Job Summary

2.1 Job Event Log

Type	Seq. No.	Graph Label	Date	Time	Source	DH Density (ppg)	Comb Pump Rate (bbl/min)	PS Pump Press (psi)	Pump Stg Tot (bbl)	Comments
Event	1	Call Out	10/29/2017	02:00:00	USER					
Event	2	Pre-Convoy Safety Meeting	10/29/2017	03:55:00	USER					
Event	3	Crew Leave Yard	10/29/2017	04:00:00	USER					
Event	4	Arrive At Loc	10/29/2017	07:00:00	USER					CREW ARRIVED AT LOCATION AT 07:00, CUSTOMER HAD CALLED AND REQUESTED ON LOC TIME OF 11:00
Event	5	Assessment Of Location Safety Meeting	10/29/2017	07:05:00	USER					
Event	6	Spot Equipment	10/29/2017	07:10:00	USER					
Event	7	Pre-Rig Up Safety Meeting	10/29/2017	12:55:00	USER					
Event	8	Rig-Up Equipment	10/29/2017	13:00:00	USER					
Event	9	Pre-Job Safety Meeting	10/29/2017	15:00:00	USER					
Event	10	Start Job	10/29/2017	15:29:30	COM5					TD 1141, TP 1135.3', SJ 42.1', 9 5/8" CASING IN 13.5" HOLE, MUD 9.0 PPG, WATER TEMP 63, PH 6.4, CHLORIDES 0, SULFATES <200, POTASSIUM 450
Event	11	Test Lines	10/29/2017	15:31:28	COM5			300.00		TEST LINES TO 3000
Event	12	Pump Spacer 1	10/29/2017	15:37:03	COM5	8.33	4.00	100.00	20.0	20 BBL FRESH WATER, 100 PSI
Event	13	Pump Lead Cement	10/29/2017	15:44:07	COM5	12.3	8.00	300.00	53.0	53 BBL, 125 SKS @ 12.3 PPG, 2.38 YLD, 13.77 GAL/SK H2O REQ, 300 PSI
Event	14	Pump Tail Cement	10/29/2017	15:51:08	COM5	12.8	8.00	320.00	65.8	65.8 BBL BACK, 175 SKS @ 12.8 PPG, 2.11 YLD 11.78 GAL/SK H2O REQ, 320 PSI

Event	15	Shutdown	10/29/2017	15:59:37	USER					
Event	16	Drop Top Plug	10/29/2017	16:02:07	COM5					PLUG AWAY
Event	17	Pump Displacement	10/29/2017	16:02:56	COM5	8.33	10.0	450.0	86.0	86 BBL FRESH WATER
Event	18	Slow Rate	10/29/2017	16:12:56	USER	8.33	2.00	550.0	76.0	SLOW AT 76 BBL AWAY 550 PSI > 265 PSI
Event	19	Bump Plug	10/29/2017	16:17:19	COM5	8.33	2.00	850.0	86.0	PLUG BUMPED AT CALCULATED, FINAL CIRCULATING PRESSURE 280 PSI
Event	20	Check Floats	10/29/2017	16:18:40	USER					FLOATS HELD
Event	21	End Job	10/29/2017	16:21:46	COM5					GOOD CIRCULATION THROUGHOUT JOB, PIPE LEFT STATIC, 26 BBL CEMENT TO SURFACE, 30# SUGAR USED, NO ADD HOURS CHARGED
Event	22	Pre-Rig Down Safety Meeting	10/29/2017	16:25:00	USER					
Event	23	Rig-Down Equipment	10/29/2017	16:30:00	USER					THANK YOU FOR CHOOSING HALLIBURTON CEMENTING OF GRAND JUNCTION, CO - ANTHONY ANDREWS AND CREW
Event	24	Pre-Convoy Safety Meeting	10/29/2017	16:55:00	USER					
Event	25	Crew Leave Location	10/29/2017	17:00:00	USER					

TEP - SR 412-12 - 9 5/8" SURFACE CASING



- | | | | | |
|---|-----------------------------|---------------------|--------------------------------|------------------------|
| ① Call Out | ⑦ Pre-Rig Up Safety Meeting | ⑬ Pump Lead Cement | ⑰ Bump Plug | 25 Crew Leave Location |
| ② Pre-Convoy Safety Meeting | ⑧ Rig-Up Equipment | ⑭ Pump Tail Cement | 20 Check Floats | |
| ③ Crew Leave Yard | ⑨ Pre-Job Safety Meeting | ⑮ Shutdown | 21 End Job | |
| ④ Arrive At Loc | ⑩ Start Job | ⑯ Drop Top Plug | 22 Pre-Rig Down Safety Meeting | |
| ⑤ Assessment Of Location Safety Meeting | ⑪ Test Lines | ⑰ Pump Displacement | 23 Rig-Down Equipment | |
| ⑥ Spot Equipment | ⑫ Pump Spacer 1 | ⑱ Slow Rate | 24 Pre-Convoy Safety Meeting | |

▼ **HALLIBURTON** | iCem® Service

Created: 2017-10-29 13:34:59, Version: 4.2.393

Edit

Customer: TEP ROCKY MOUNTAIN LLC-EBUS

Job Date: 10/29/2017 2:40:38 PM

Well: SR 412-12

Representative: DARRELL LEATHERMAN

Sales Order #: 904394839

ELITE 4: TRAVIS BROWN / ANTHONY ANDREWS

TEP - SR 412-12 - 9 5/8" SURFACE CASING

