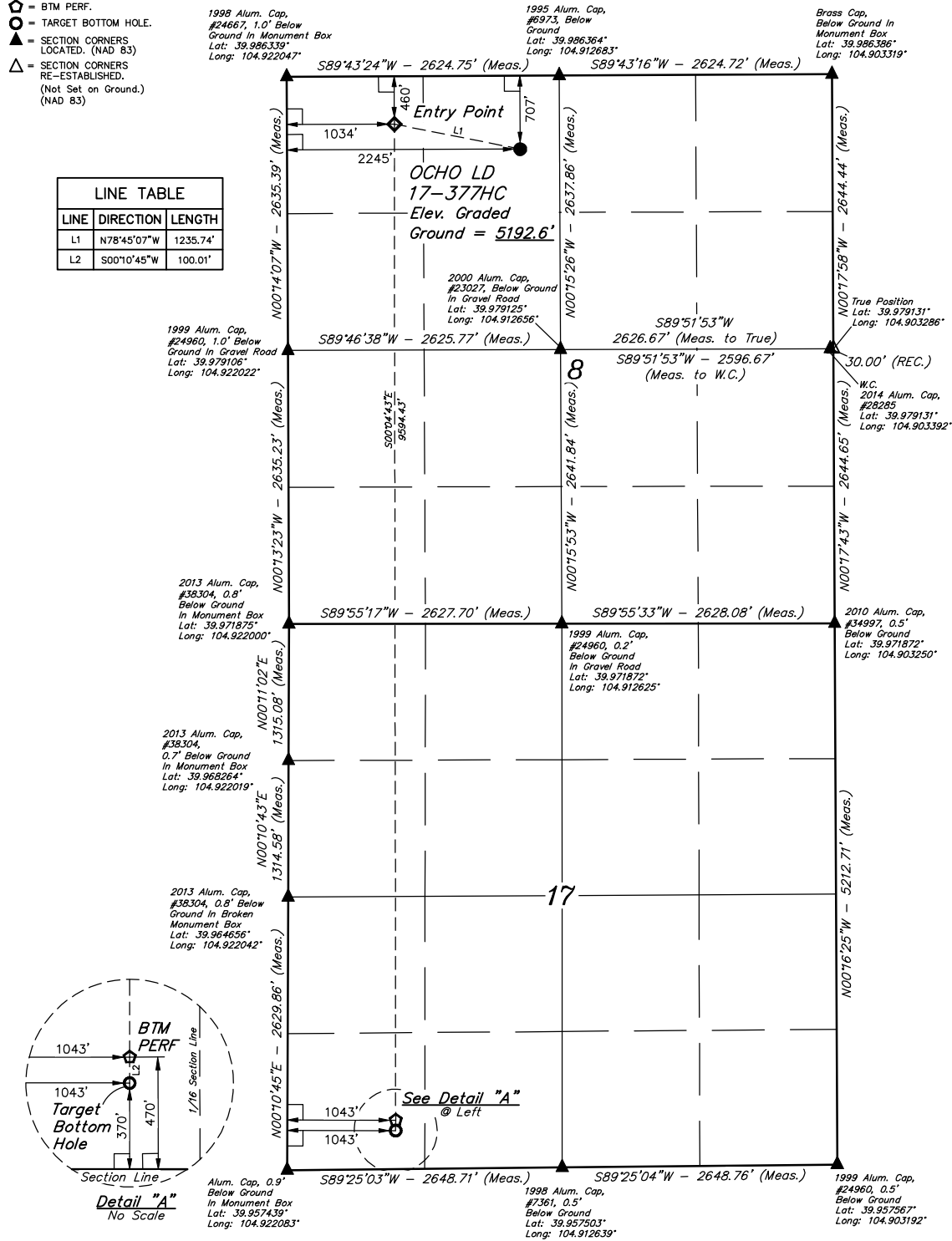


# LEGEND:

- = 90° SYMBOL
- = PROPOSED WELLHEAD.
- ◆ = ENTRY POINT.
- = BTM PERF.
- = TARGET BOTTOM HOLE.
- ▲ = SECTION CORNERS LOCATED. (NAD 83)
- △ = SECTION CORNERS RE-ESTABLISHED. (Not Set on Ground.) (NAD 83)

LINE TABLE		
LINE	DIRECTION	LENGTH
L1	N78°45'07"W	1235.74'
L2	S00°10'45"W	100.01'

T1S, R67W, 6th P.M.



PDOP = 1.4



NAD 83 (SURFACE LOCATION)	NAD 83 (ENTRY POINT)	NAD 83 (BTM PERF)	NAD 83 (TARGET BOTTOM HOLE)
LATITUDE = 39°59'03.91" (39.984419)	LATITUDE = 39°59'06.31" (39.985086)	LATITUDE = 39°57'31.52" (39.958756)	LATITUDE = 39°57'30.53" (39.958481)
LONGITUDE = 104°54'50.51" (104.914031)	LONGITUDE = 104°55'06.08" (104.918356)	LONGITUDE = 104°55'06.08" (104.918356)	LONGITUDE = 104°55'06.09" (104.918358)
NAD 27 (SURFACE LOCATION)	NAD 27 (ENTRY POINT)	NAD 27 (BTM PERF)	NAD 27 (TARGET BOTTOM HOLE)
LATITUDE = 39°59'03.97" (39.984436)	LATITUDE = 39°59'06.37" (39.985103)	LATITUDE = 39°57'31.57" (39.958769)	LATITUDE = 39°57'30.58" (39.958494)
LONGITUDE = 104°54'48.60" (104.913500)	LONGITUDE = 104°55'04.16" (104.917822)	LONGITUDE = 104°55'04.16" (104.917822)	LONGITUDE = 104°55'04.17" (104.917825)

**BASIS OF BEARINGS**  
BASIS OF BEARINGS IS A G.P.S. OBSERVATION

**BASIS OF ELEVATION**

BENCHMARK JR 53 5026 LOCATED IN THE SW 1/4 SE 1/4 OF SECTION 18, T1N, R68W, 6th P.M., TAKEN FROM 1988 PUBLISHED DATUM BY THE UNITED STATES DEPARTMENT OF THE INTERIOR, GEOLOGICAL SURVEY AS BEING 5028 FEET.



**UELS, LLC**  
Corporate Office \* 85 South 200 East  
Vernal, UT 84078 \* (435) 789-1017



**GREAT WESTERN OPERATING COMPANY**

**OCHO LD 17-377HC**  
NE 1/4 NW 1/4, SECTION 8, T1S, R67W, 6th P.M.  
ADAMS COUNTY, COLORADO

SURVEYED BY	GREG WEIMER	SCALE
DRAWN BY	K.B.	10-06-17
WELL LOCATION PLAT		

THIS IS TO CERTIFY THAT THE ABOVE DESCRIBED PROPERTY IS THE PROPERTY OF GREAT WESTERN OPERATING COMPANY AND THAT THE SAME ARE TRUE AND CORRECT TO THE BEST OF MY KNOWLEDGE AND BELIEF.

