

The Road to Excellence Starts with Safety

Sold To #: 300466		Ship To #: 3751910		Quote #: 0022370055		Sales Order #: 0904417499				
Customer: ANADARKO PETROLEUM CORP-EBUS				Customer Rep: JOSH						
Well Name: WAGNER			Well #: 28N-W10HZ			API/UWI #: 05-123-43472-00				
Field: WATTENBERG		City (SAP): IONE		County/Parish: WELD		State: COLORADO				
Legal Description: SW NE-22-1N-67W-1722FNL-1619FEL										
Contractor: PRECISION DRLG				Rig/Platform Name/Num: PRECISION 464						
Job BOM: 7525 7525										
Well Type: HORIZONTAL GAS										
Sales Person: HALAMERICA\HX41066				Srv Supervisor: Jason Welton						
Job										
Formation Name										
Formation Depth (MD)		Top		Bottom						
Form Type				BHST						
Job depth MD		15332ft		Job Depth TVD		7506				
Water Depth				Wk Ht Above Floor						
Perforation Depth (MD)		From		To						
Well Data										
Description	New / Used	Size in	ID in	Weight lbm/ft	Thread	Grade	Top MD ft	Bottom MD ft	Top TVD ft	Bottom TVD ft
Drill Pipe		4	3.34	14			0	5770	0	5770
Casing		7	6.276	26	LTC	HCP110	0	5970	0	5970
Casing		4.5	4	11.6	LTC	HCP110	5770	15332	5770	7478
Open Hole Section			6.125				5970	15332	5970	7478
Tools and Accessories										
Type	Size in	Qty	Make	Depth ft		Type	Size in	Qty	Make	
Guide Shoe	4.5			15332		Top Plug	4.5	1	WF	
Float Shoe	4.5					Bottom Plug	4.5		HES	
Float Collar	4.5					SSR plug set	4.5		HES	
Insert Float	4.5					Plug Container	4.5		HES	
Stage Tool	4.5					Centralizers	4.5		HES	
Fluid Data										
Stage/Plug #: 1										
Fluid #	Stage Type	Fluid Name	Qty	Qty UoM	Mixing Density lbm/gal	Yield ft3/sack	Mix Fluid Gal	Rate bbl/min	Total Mix Fluid Gal	
1	Tuned Spacer III	Tuned Spacer III	60	bbl	10.5	6.25				
0.70 gal/bbl		MUSOL A, 330 GAL TOTE - (790828)								
88.91 lbm/bbl		BARITE, BULK (100003681)								
37.58 gal/bbl		FRESH WATER								
0.70 gal/bbl		DUAL SPACER SURFACTANT B, 5 GAL PAIL (100003665)								

Fluid #	Stage Type	Fluid Name	Qty	Qty UoM	Mixing Density lbm/gal	Yield ft3/sack	Mix Fluid Gal	Rate bbl/min	Total Mix Fluid Gal
2	EconoCem	ECONOCEM (TM) SYSTEM	600	sack	13.5	1.68		6	7.98
7.98 Gal		<b>FRESH WATER</b>							
0.50 %		<b>HR-5, 50 LB SK (100005050)</b>							
Fluid #	Stage Type	Fluid Name	Qty	Qty UoM	Mixing Density lbm/gal	Yield ft3/sack	Mix Fluid Gal	Rate bbl/min	Total Mix Fluid Gal
3	Displacement Fluid	Displacement Fluid	204	bbl	8.34				
Cement Left In Pipe	Amount	45 ft			Reason			Shoe Joint	
Mix Water:	pH ##	Mix Water Chloride:## ppm			Mix Water Temperature:## °F °C				
Cement Temperature:	## °F °C	Plug Displaced by:## lb/gal kg/m3 XXXX			Disp. Temperature:## °F °C				
Plug Bumped?	Yes/No	Bump Pressure:#### psi MPa			Floats Held?Yes/No				
Cement Returns:	## bbl m3	Returns Density:## lb/gal kg/m3			Returns Temperature:## °F °C				
<b>Comment</b> JOB WENT AS PER DESIGN. PLEASE SEE JOB LOG FOR MORE IN DEPTH DETAIL.									

## 2.0 Real-Time Job Summary

### 2.1 Job Event Log

Type	Seq. No.	Activity	Graph Label	Date	Time	Source	Comments
Event	1	Arrive At Loc	Arrive At Loc	11/8/2017	04:45:00	USER	CREW CALLED OUT AT 0130/REQUESTED ON LOCATION AT 0730/RIG RUNNING LINER TO BOTTOM WITH DP/APPROX 3000' TO GO
Event	2	Assessment Of Location Safety Meeting	Assessment Of Location Safety Meeting	11/8/2017	04:55:00	USER	SPOT IN HES EQUIPMENT AND TEST WATER
Event	3	Pre-Rig Up Safety Meeting	Pre-Rig Up Safety Meeting	11/8/2017	05:05:00	USER	EYES ON PATH/TEAM LIFTING
Event	4	Rig-Up Equipment	Rig-Up Equipment	11/8/2017	05:15:00	USER	
Event	5	Rig-Up Completed	Rig-Up Completed	11/8/2017	06:15:00	USER	HES READY
Event	6	Wait on Customer or Customer Sub-Contractor Equip - Start Time	Wait on Customer or Customer Sub-Contractor Equip - Start Time	11/8/2017	06:30:00	USER	RIG FINISH RUNNING LINER TO BOTTOM/CONDITION WELL/SET WEATHERFORD LINER
Event	7	Pre-Job Safety Meeting	Pre-Job Safety Meeting	11/8/2017	10:15:00	USER	REVIEW JOB AND SAFETY PROCEDURES
Event	8	Start Job	Start Job	11/8/2017	10:50:00	COM4	
Event	9	Test Lines	Test Lines	11/8/2017	12:09:03	COM4	500PSI LOW TEST/5000PSI HIGH TEST/TESTS GOOD
Event	10	Pump Spacer 1	Pump Spacer 1	11/8/2017	12:15:52	COM4	60BBLS TUNED SPACER III @ 10.5PPG/4BPM/935PSI
Event	11	Pump Cement	Pump Cement	11/8/2017	12:29:13	COM4	600SKS/180BBLS @ 13.5PPG/4BPM/660PSI
Event	12	Check Weight	Check weight	11/8/2017	12:32:41	COM4	DENSITY VERIFIED/WET SAMPLE TAKEN
Event	13	Shutdown	Shutdown	11/8/2017	13:12:41	COM4	
Event	14	Clean Lines	Clean Lines	11/8/2017	13:12:46	COM4	TO HALF ROUND PIT
Event	15	Drop Plug	Drop Plug	11/8/2017	13:22:11	COM4	DROP WEATHERFORD DART

Event	16	Pump Displacement	Pump Displacement	11/8/2017	13:22:15	COM4	204BBLS @ 4BPM/75PSI/SLOWED RATE AT 50BBLS AWAY TO SHEAR TOP PLUG/FIRST 20BBLS TREATED WITH MMCR
Event	17	Displ Reached Cmnt	Displ Reached Cmnt	11/8/2017	13:27:45	COM4	CAUGHT CEMENT AT 20BBLS DISPLACED/400PSI INITIAL LIFT
Event	18	Other	Other	11/8/2017	13:36:24	COM4	SHEAR WF TOP PLUG @ 3500PSI
Event	19	Bump Plug	Bump Plug	11/8/2017	14:13:58	COM4	PLUG LANDED AT 204BBLS DISPLACED/2520PSI/FULL RETURNS THROUGHOUT JOB
Event	20	Other	Other	11/8/2017	14:14:39	COM4	CHECK FLOATS/HELD/1.5BBLS BACK
Event	21	Set Packer	Set Packer	11/8/2017	14:18:50	COM4	WF SET PACKER/PINS SHEARED @ 65K
Event	22	Test Lines	Test Liner/Packer	11/8/2017	14:33:15	COM4	3000PSI/15MIN/TEST GOOD
Event	23	Circulate Well	Circulate Well	11/8/2017	14:55:36	COM4	150BBLS FRESHWATER/8BPM/1700PSI/CIRCULATED 50BBLS SPACER OFF LINER TOP/NO CEMENT
Event	24	End Job	End Job	11/8/2017	15:17:37	COM4	
Event	25	Pre-Rig Down Safety Meeting	Pre-Rig Down Safety Meeting	11/8/2017	15:30:00	USER	
Event	26	Rig-Down Equipment	Rig-Down Equipment	11/8/2017	15:45:00	USER	
Event	27	Rig-Down Completed	Rig-Down Completed	11/8/2017	16:45:00	USER	
Event	28	Pre-Convoy Safety Meeting	Pre-Convoy Safety Meeting	11/8/2017	16:55:00	USER	

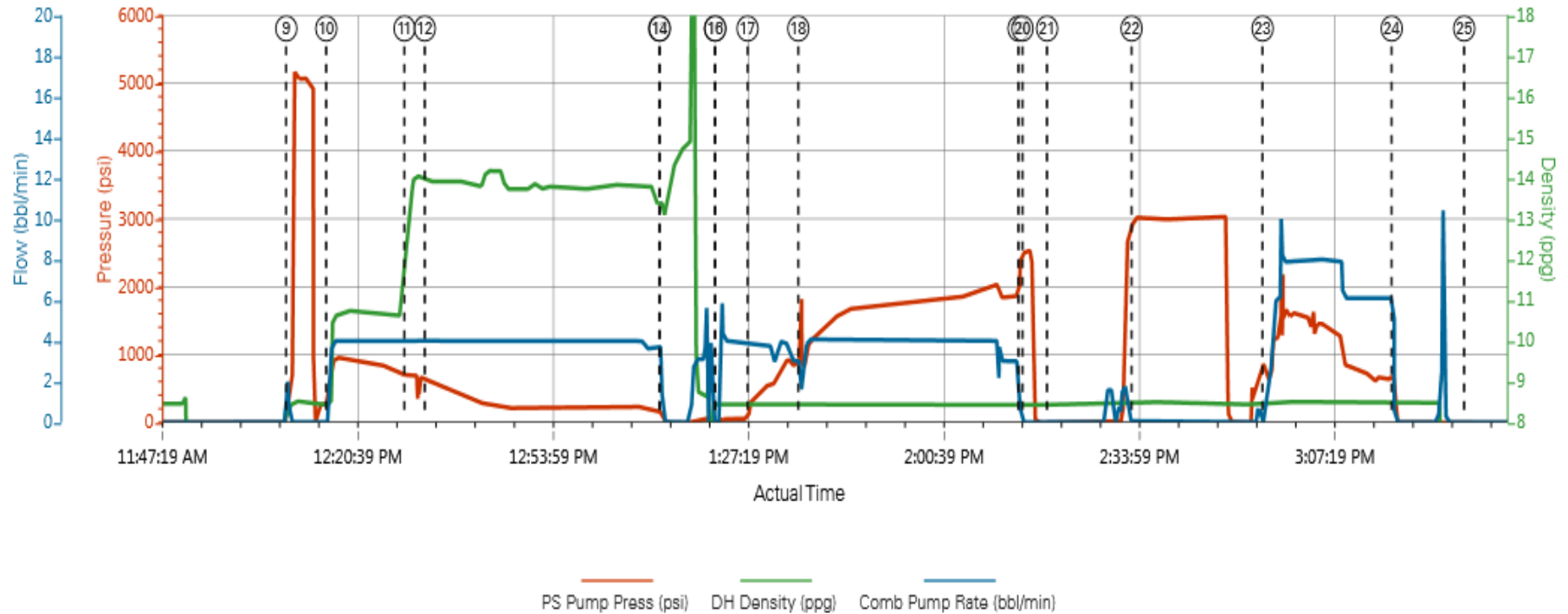
Event	29	Depart Location	Depart Location	11/8/2017	17:00:00	USER	THANK YOU
-------	----	-----------------	-----------------	-----------	----------	------	-----------

---

## 3.0 Attachments

### 3.1 Job Chart

#### Custom Results



- |   |   |   |                                    |
|---|---|---|------------------------------------|
| ① Arrive At Loc n/a;n/a;n/a                         | ③ Pre-Rig Up Safety Meeting n/a;n/a;n/a | ⑤ Rig-Up Completed n/a;n/a;n/a  | ⑦ Pre-Job Safety Meeting -2;8.49;0 |
| ② Assessment Of Location Safety Meeting n/a;n/a;n/a | ④ Rig-Up Equipment n/a;n/a;n/a          | ⑥ Wait on Customer or Customer Sub-Contractor Equip - StartTime n/a;n/a;n/a | ⑧ Start Job 9;8.5;0                |