

HALLIBURTON

*Cementing Job Summary**The Road to Excellence Starts with Safety*

Sold To #: 300466	Ship To #: 3751863	Quote #: 0022378146	Sales Order #: 0904454469							
Customer: ANADARKO PETROLEUM CORP-EBUS		Customer Rep: LUKE RAINS								
Well Name: WAGNER	Well #: 2N-10HZ	API/UWI #: 05-123-43471-00								
Field: WATTENBERG	City (SAP): IONE	County/Parish: WELD	State: COLORADO							
Legal Description: SW NE-22-1N-67W-1722FNL-1559FEL										
Contractor: PRECISION DRLG		Rig/Platform Name/Num: PRECISION 464								
Job BOM: 7522 7522										
Well Type: HORIZONTAL GAS										
Sales Person: HALAMERICA\HX41066		Srvc Supervisor: Vitali Neverdasov								
Job										
Formation Name										
Formation Depth (MD)	Top	Bottom								
Form Type	BHST									
Job depth MD	8013ft	Job Depth TVD								
Water Depth		Wk Ht Above Floor								
Perforation Depth (MD)	From	To								
Well Data										
Description	New / Used	Size in	ID in	Weight lbm/ft	Thread	Grade	Top MD ft	Bottom MD ft	Top TVD ft	Bottom TVD ft
Casing		9.625	8.921	36		J-55	0	1873	0	0
Casing		7	6.276	26	LTC	HCP110	0	6013	0	5760
Open Hole Section			8.5				1875	6024	1875	5760
Tools and Accessories										
Type	Size in	Qty	Make	Depth ft		Type	Size in	Qty	Make	
Guide Shoe	7					Top Plug	7	1	NA	
Float Shoe	7	1	NA	6013		Bottom Plug	7	1	NA	
Float Collar	7	1	NA	5969		SSR plug set	7	0	NA	
Insert Float	7					Plug Container	7	1	HES	
Stage Tool	7					Centralizers	7	102	NA	
Fluid Data										
Stage/Plug #: 1										
Fluid #	Stage Type	Fluid Name	Qty	Qty UoM	Mixing Density lbm/gal	Yield ft ³ /sack	Mix Fluid Gal	Rate bbl/min	Total Mix Fluid Gal	
1	Tuned Spacer III	Tuned Spacer III	40	bbl	10.5	6.25				
0.70 gal/bbl		MUSOL A, 330 GAL TOTE - (790828)								
88.91 lbm/bbl		BARITE, BULK (100003681)								
37.58 gal/bbl		FRESH WATER								
0.70 gal/bbl		DUAL SPACER SURFACTANT B, 5 GAL PAIL (100003665)								

HALLIBURTON

Cementing Job Summary

Fluid #	Stage Type	Fluid Name	Qty	Qty UoM	Mixing Density lbm/gal	Yield ft ³ /sack	Mix Fluid Gal	Rate bbl/min	Total Mix Fluid Gal
2	ElastiCem	ELASTICEM (TM) SYSTEM	405	sack	13.2	1.57		6	7.53
	0.20 %	HR-5, 50 LB SK (100005050)							
	7.53 Gal	FRESH WATER							
	0.10 %	SUPER CBL, 50 LB PAIL (100003668)							
Fluid #	Stage Type	Fluid Name	Qty	Qty UoM	Mixing Density lbm/gal	Yield ft ³ /sack	Mix Fluid Gal	Rate bbl/min	Total Mix Fluid Gal
3	Displacement Fluid	Displacement Fluid	228	bbl	9.5				
Cement Left In Pipe Amount 44 ft Reason Shoe Joint									
Comment : 8 BBLS OF SPACER BACK TO SURFACE. ESTIMATED TOP OF CEMENT @ 1077'									

2.0 Real-Time Job Summary

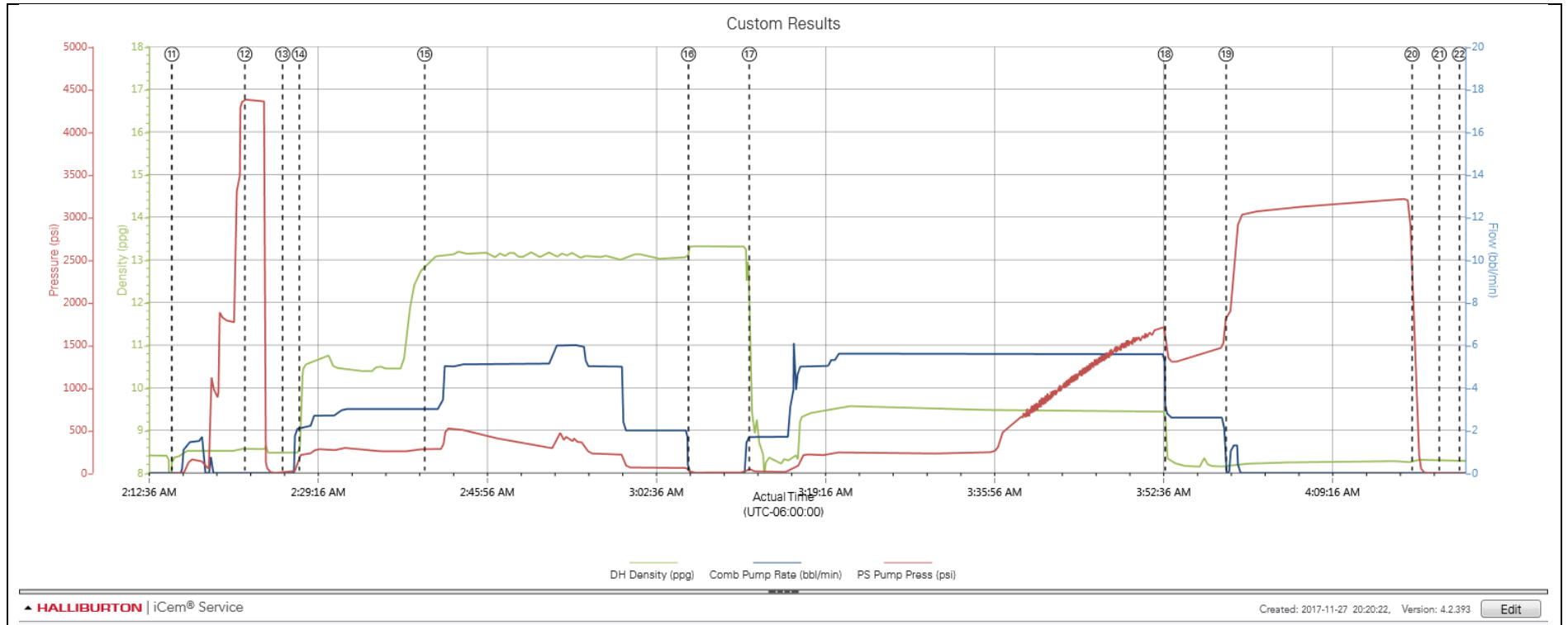
2.1 Job Event Log

Type	Seq. No.	Activity	Graph Label	Date	Time	Source	DH Density (ppg)	Comb Pump Rate (bbl/min)	PS Pump Press (psi)	Comments
Event	1	Call Out	Call Out	11/27/2017	19:30:00	USER				ON LOCATION @ 00:00
Event	2	Depart Yard Safety Meeting	Depart Yard Safety Meeting	11/27/2017	20:30:00	USER				HELD JSA PRIOR LEAVING THE YARD
Event	3	Depart Shop for Location	Depart Shop for Location	11/27/2017	20:45:00	USER				CALLED JORNEY
Event	4	Arrive at Location from Service Center	Arrive at Location from Service Center	11/27/2017	23:28:00	USER				6 MILES. DISCUSS NUMBERS AND PRCEDURE WITH CUSTOMER. RIG IS RUNNING CASING
Event	5	Other	Other	11/27/2017	23:40:00	USER				SPOT TRUCKS
Event	6	Safety Meeting - Pre Rig-Up	Safety Meeting - Pre Rig-Up	11/27/2017	23:55:00	USER				HELD PRE RIG UP SAFETY MEETING
Event	7	Rig-up Lines	Rig-up Lines	11/28/2017	00:01:00	USER				RIG UP ALL SURFACE LINES
Event	8	Casing on Bottom	Casing on Bottom	11/28/2017	00:07:00	USER				CASING ON BUTTOM
Event	9	Other	Other	11/28/2017	00:20:00	USER				RIG IS CIRCULATING/ RIG IS RIGGING DOWN CASING CREW.
Event	10	Safety Meeting - Pre Job	Safety Meeting - Pre Job	11/28/2017	01:43:00	USER	8.44	0.10	-11.00	PRE JOB SAFETY MEETING WITH ALL PERSONEL INVOLVED
Event	11	Start Job	Start Job	11/28/2017	02:15:04	COM4	8.37	0.00	-3.00	
Event	12	Pressure Test	Pressure Test	11/28/2017	02:22:16	USER	8.57	0.00	4380.00	LOAD LINE AND PRESSURE TEST TO 4370 PSI
Event	13	Drop Bottom Plug	Drop Bottom Plug	11/28/2017	02:26:00	USER	8.47	0.00	18.00	
Event	14	Pump Spacer	Pump Spacer	11/28/2017	02:27:38	USER	9.97	2.20	221.00	BATCH/WEIGH/PUMP 40 BBLS OF TUNED SPACER III WITH SURFACTANS @ 10.5 PPG
Event	15	Pump Cement	Pump Cement	11/28/2017	02:40:00	USER	12.91	3.00	283.00	BATCH/ WEIGH/ PUMP 405 SKS (113.2 BBLS) OF ELASTICEM @ 13.2 PPG
Event	16	Shutdown	Shutdown	11/28/2017	03:06:00	USER	13.32	0.00	13.00	SHUTDOWN/ DROP TOP PLUG

Event	17	Pump Displacement	Pump Displacement	11/28/2017	03:12:00	USER	9.48	1.70	34.00	WASH UP ON TOP OF THE PLUG AND DISPLACE WITH MUD
Event	18	Slow Rate	Slow Rate	11/28/2017	03:53:00	USER	8.32	2.80	1384.00	SLOW RATE
Event	19	Bump Plug	Bump Plug	11/28/2017	03:59:00	USER	8.17	0.00	1857.00	BUMP PLUG WITH 500 OVER FINAL CIRCULATING PRESSURE. PER CUSTOMER BRING PRESSURE TO 3000 PSI FOR CASING TEST FOR 15 MIN.
Event	20	Check Floats	Check Floats	11/28/2017	04:17:20	USER	8.28	0.00	1657.00	FLOATS HELD
Event	21	End Job	End Job	11/28/2017	04:20:00	COM4				
Event	22	Other	Other	11/28/2017	04:22:00	USER	8.28	0.00	-2.00	CLEAN AND BLOW DOWN LINES FROM MUD
Event	23	Safety Meeting - Pre Rig-Down	Safety Meeting - Pre Rig-Down	11/28/2017	04:55:00	USER	1.79	2.40	5.00	
Event	24	Depart Location Safety Meeting	Depart Location Safety Meeting	11/28/2017	06:05:00	USER				HELD JSA PRIOR LEAVING LOCATION
Event	25	Depart Location for Service Center or Other Site	Depart Location for Service Center or Other Site	11/28/2017	06:20:00	USER				

3.0 Attachments

3.1 Custom Results – Job Chart with Events



3.2 Custom Results – Job Chart without Events

