

SRC ENERGY

**WELD COUNTY (NAD83, TRUE NORTH)
6N-66W-18 LINCOLN STATE 3-18 PAD
LINCOLN STATE 8N-17B-M**

Wellbore #1

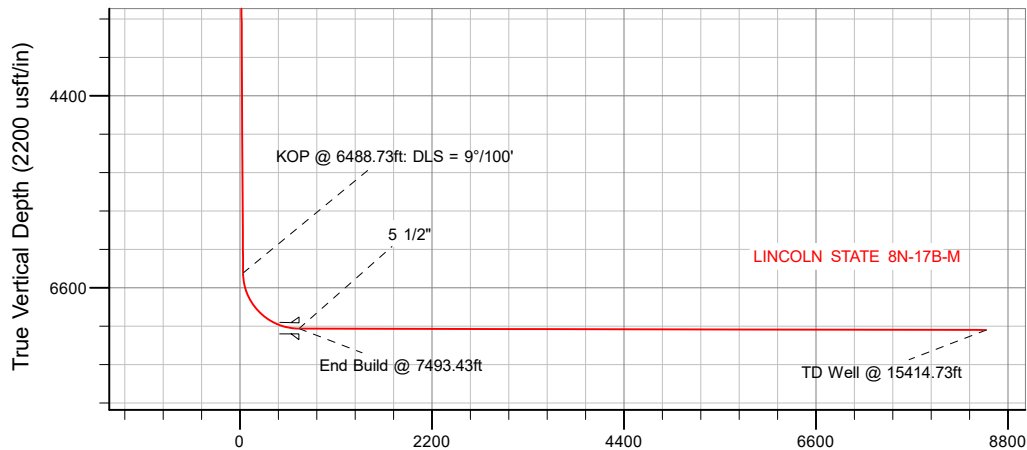
Plan: Design #1

Standard Planning Report

12 December, 2017

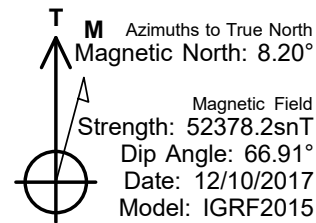
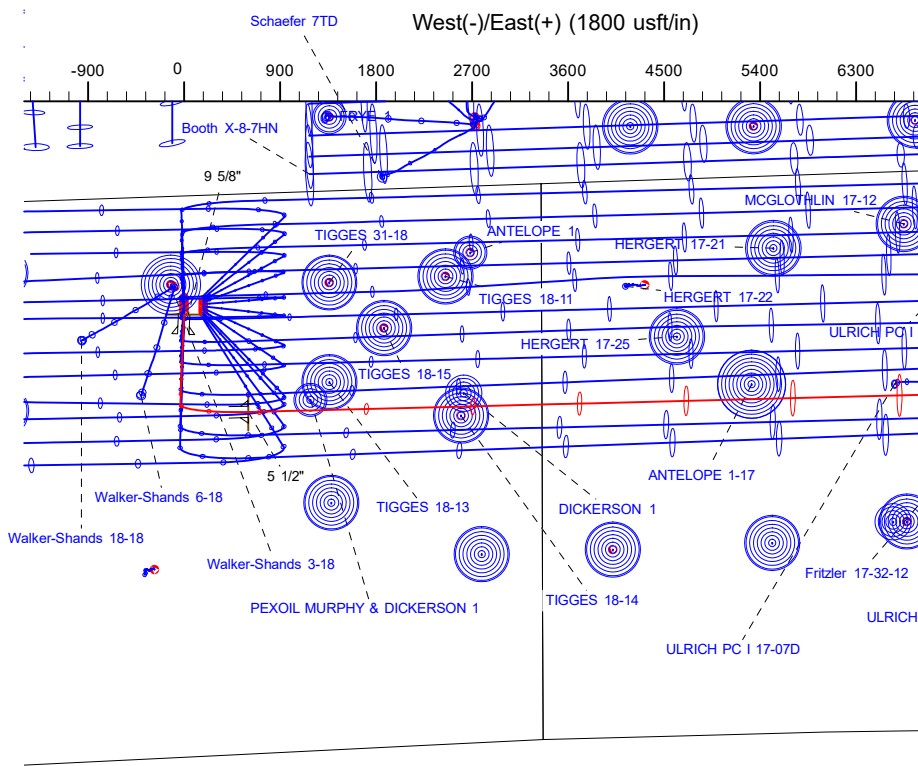
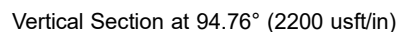
SRC ENERGY

CASING DETAILS			
TVD	MD	Name	Size
1750.00	1762.12	9 5/8"	9-5/8
7067.00	7493.43	5 1/2"	5-1/2



SECTION DETAILS										
Sec	MD	Inc	Azi	TVD	+N/-S	+E/-W	Dleg	TFace	VSec	Target
1	0.00	0.00	0.00	0.00	0.00	0.00	0.00	0.00	0.00	
2	250.00	0.00	0.00	250.00	0.00	0.00	0.00	0.00	0.00	
3	650.00	8.00	182.40	648.70	-27.86	-1.17	2.00	182.40	1.15	
4	6488.73	8.00	182.40	6430.61	-839.74	-35.20	0.00	0.00	34.66	
5	7493.43	89.88	88.54	7067.00	-912.52	602.19	9.00	-93.84	675.89	
6	15414.73	89.88	88.54	7083.00	-710.01	8520.89	0.00	0.00	8550.42	LINCOLN STATE 8N-17B-M_TD

WELLBORE TARGET DETAILS (LAT/LONG)					
Name	TVD	+N/-S	+E/-W	Latitude	Longitude
LINCOLN STATE 8N-17B-M_SHL	0.00	0.00	0.00	40.491544	-104.823561
LINCOLN STATE 8N-17B-M_TD	7083.00	-710.01	8520.89	40.489591	-104.792926

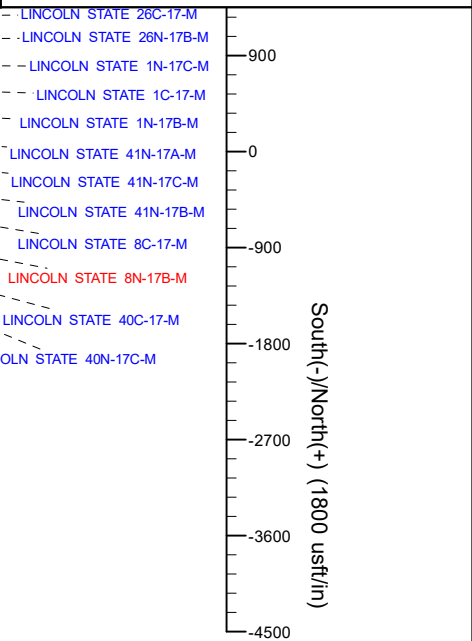


WELL DETAILS: LINCOLN STATE 8N-17B-M	
GL = 4852'	
RKB = 25' @ 4877.00usft (PD 562)	
Plan: Design #1 (LINCOLN STATE 8N-17B-M/Wellbore #1)	
Created By:	Date: 12/12/2017
Reviewed: _____	Date: _____

BHL
2113' FNL
150' FEL

Heel
2046' FNL
2753' FEL

SHL
1112' FNL
2451' FWL



Project	WELD COUNTY (NAD83, TRUE NORTH)		
Map System:	US State Plane 1983	System Datum:	Mean Sea Level
Geo Datum:	North American Datum 1983		
Map Zone:	Colorado Northern Zone		

Site	6N-66W-18 LINCOLN STATE 3-18 PAD		
Site Position:		Northing:	1,422,807.42 usft
From:	Lat/Long	Easting:	3,188,319.02 usft
Position Uncertainty:	0.00 usft	Slot Radius:	13-3/16 "
		Latitude:	40.492034
		Longitude:	-104.822909
		Grid Convergence:	0.44 °

Well	LINCOLN STATE 8N-17B-M		
Well Position	+N/-S	-178.52 usft	Northing:
	+E/-W	-181.34 usft	Easting:
Position Uncertainty	3.28 usft	Wellhead Elevation:	
		Latitude:	40.491544
		Longitude:	-104.823561
		Ground Level:	4,852.00 usft

Wellbore	Wellbore #1				
Magnetics	Model Name	Sample Date	Declination	Dip Angle	Field Strength
			(°)	(°)	(nT)
	IGRF2015	12/10/2017	8.20	66.91	52,378.24232011

Design	Design #1			
Audit Notes:				
Version:	Phase:	PLAN	Tie On Depth:	0.00
Vertical Section:	Depth From (TVD)	+N/-S	+E/-W	Direction
	(usft)	(usft)	(usft)	(°)
	0.00	0.00	0.00	94.76

Plan Survey Tool Program	Date	12/12/2017		
Depth From (usft)	Depth To (usft)	Survey (Wellbore)	Tool Name	Remarks
1	0.00	1,750.00	Design #1 (Wellbore #1)	SRC Energy_ISCWSA REV 2
				Fixed:v2:crustal field declinatio
2	1,750.00	15,414.73	Design #1 (Wellbore #1)	SRC Energy_ISCWSA REV 2
				Fixed:v2:crustal field declinatio

Plan Sections										
Measured Depth (usft)	Inclination (°)	Azimuth (°)	Vertical Depth (usft)	+N/-S (usft)	+E/-W (usft)	Dogleg Rate (°/100usft)	Build Rate (°/100usft)	Turn Rate (°/100usft)	TFO (°)	Target
0.00	0.00	0.00	0.00	0.00	0.00	0.00	0.00	0.00	0.00	
250.00	0.00	0.00	250.00	0.00	0.00	0.00	0.00	0.00	0.00	
650.00	8.00	182.40	648.70	-27.86	-1.17	2.00	2.00	0.00	182.40	
6,488.73	8.00	182.40	6,430.61	-839.74	-35.20	0.00	0.00	0.00	0.00	
7,493.43	89.88	88.54	7,067.00	-912.52	602.19	9.00	8.15	-9.34	-93.84	
15,414.73	89.88	88.54	7,083.00	-710.01	8,520.89	0.00	0.00	0.00	0.00	LINCOLN STATE 8N-

Planned Survey

Measured Depth (usft)	Inclination (°)	Azimuth (°)	Vertical Depth (usft)	+N/-S (usft)	+E/-W (usft)	Vertical Section (usft)	Dogleg Rate (°/100usft)	Build Rate (°/100usft)	Turn Rate (°/100usft)
0.00	0.00	0.00	0.00	0.00	0.00	0.00	0.00	0.00	0.00
100.00	0.00	0.00	100.00	0.00	0.00	0.00	0.00	0.00	0.00
200.00	0.00	0.00	200.00	0.00	0.00	0.00	0.00	0.00	0.00
250.00	0.00	0.00	250.00	0.00	0.00	0.00	0.00	0.00	0.00
Begin Nudge @ 250.00ft									
300.00	1.00	182.40	300.00	-0.44	-0.02	0.02	2.00	2.00	0.00
400.00	3.00	182.40	399.93	-3.92	-0.16	0.16	2.00	2.00	0.00
500.00	5.00	182.40	499.68	-10.89	-0.46	0.45	2.00	2.00	0.00
600.00	7.00	182.40	599.13	-21.33	-0.89	0.88	2.00	2.00	0.00
650.00	8.00	182.40	648.70	-27.86	-1.17	1.15	2.00	2.00	0.00
End Nudge @ 650.00ft									
700.00	8.00	182.40	698.21	-34.81	-1.46	1.44	0.00	0.00	0.00
800.00	8.00	182.40	797.24	-48.71	-2.04	2.01	0.00	0.00	0.00
900.00	8.00	182.40	896.27	-62.62	-2.62	2.58	0.00	0.00	0.00
1,000.00	8.00	182.40	995.30	-76.52	-3.21	3.16	0.00	0.00	0.00
1,100.00	8.00	182.40	1,094.32	-90.43	-3.79	3.73	0.00	0.00	0.00
1,200.00	8.00	182.40	1,193.35	-104.33	-4.37	4.31	0.00	0.00	0.00
1,300.00	8.00	182.40	1,292.38	-118.24	-4.96	4.88	0.00	0.00	0.00
1,400.00	8.00	182.40	1,391.40	-132.14	-5.54	5.45	0.00	0.00	0.00
1,500.00	8.00	182.40	1,490.43	-146.05	-6.12	6.03	0.00	0.00	0.00
1,600.00	8.00	182.40	1,589.46	-159.95	-6.70	6.60	0.00	0.00	0.00
1,700.00	8.00	182.40	1,688.48	-173.86	-7.29	7.18	0.00	0.00	0.00
1,762.12	8.00	182.40	1,750.00	-182.50	-7.65	7.53	0.00	0.00	0.00
9 5/8"									
1,800.00	8.00	182.40	1,787.51	-187.76	-7.87	7.75	0.00	0.00	0.00
1,900.00	8.00	182.40	1,886.54	-201.67	-8.45	8.32	0.00	0.00	0.00
2,000.00	8.00	182.40	1,985.56	-215.57	-9.04	8.90	0.00	0.00	0.00
2,100.00	8.00	182.40	2,084.59	-229.48	-9.62	9.47	0.00	0.00	0.00
2,200.00	8.00	182.40	2,183.62	-243.38	-10.20	10.04	0.00	0.00	0.00
2,300.00	8.00	182.40	2,282.64	-257.29	-10.78	10.62	0.00	0.00	0.00
2,400.00	8.00	182.40	2,381.67	-271.19	-11.37	11.19	0.00	0.00	0.00
2,500.00	8.00	182.40	2,480.70	-285.10	-11.95	11.77	0.00	0.00	0.00
2,600.00	8.00	182.40	2,579.72	-299.00	-12.53	12.34	0.00	0.00	0.00
2,700.00	8.00	182.40	2,678.75	-312.91	-13.11	12.91	0.00	0.00	0.00
2,800.00	8.00	182.40	2,777.78	-326.82	-13.70	13.49	0.00	0.00	0.00
2,900.00	8.00	182.40	2,876.80	-340.72	-14.28	14.06	0.00	0.00	0.00
3,000.00	8.00	182.40	2,975.83	-354.63	-14.86	14.64	0.00	0.00	0.00
3,100.00	8.00	182.40	3,074.86	-368.53	-15.45	15.21	0.00	0.00	0.00
3,200.00	8.00	182.40	3,173.89	-382.44	-16.03	15.78	0.00	0.00	0.00
3,300.00	8.00	182.40	3,272.91	-396.34	-16.61	16.36	0.00	0.00	0.00
3,400.00	8.00	182.40	3,371.94	-410.25	-17.19	16.93	0.00	0.00	0.00
3,500.00	8.00	182.40	3,470.97	-424.15	-17.78	17.50	0.00	0.00	0.00
3,600.00	8.00	182.40	3,569.99	-438.06	-18.36	18.08	0.00	0.00	0.00
3,700.00	8.00	182.40	3,669.02	-451.96	-18.94	18.65	0.00	0.00	0.00
3,800.00	8.00	182.40	3,768.05	-465.87	-19.53	19.23	0.00	0.00	0.00
3,900.00	8.00	182.40	3,867.07	-479.77	-20.11	19.80	0.00	0.00	0.00
4,000.00	8.00	182.40	3,966.10	-493.68	-20.69	20.37	0.00	0.00	0.00
4,100.00	8.00	182.40	4,065.13	-507.58	-21.27	20.95	0.00	0.00	0.00
4,200.00	8.00	182.40	4,164.15	-521.49	-21.86	21.52	0.00	0.00	0.00
4,300.00	8.00	182.40	4,263.18	-535.39	-22.44	22.10	0.00	0.00	0.00
4,400.00	8.00	182.40	4,362.21	-549.30	-23.02	22.67	0.00	0.00	0.00
4,500.00	8.00	182.40	4,461.23	-563.20	-23.61	23.24	0.00	0.00	0.00
4,600.00	8.00	182.40	4,560.26	-577.11	-24.19	23.82	0.00	0.00	0.00
4,700.00	8.00	182.40	4,659.29	-591.01	-24.77	24.39	0.00	0.00	0.00
4,800.00	8.00	182.40	4,758.31	-604.92	-25.35	24.96	0.00	0.00	0.00
4,900.00	8.00	182.40	4,857.34	-618.82	-25.94	25.54	0.00	0.00	0.00
5,000.00	8.00	182.40	4,956.37	-632.73	-26.52	26.11	0.00	0.00	0.00
5,100.00	8.00	182.40	5,055.39	-646.63	-27.10	26.69	0.00	0.00	0.00
5,200.00	8.00	182.40	5,154.42	-660.54	-27.68	27.26	0.00	0.00	0.00
5,300.00	8.00	182.40	5,253.45	-674.44	-28.27	27.83	0.00	0.00	0.00
5,400.00	8.00	182.40	5,352.48	-688.35	-28.85	28.41	0.00	0.00	0.00
5,500.00	8.00	182.40	5,451.50	-702.25	-29.43	28.98	0.00	0.00	0.00
5,600.00	8.00	182.40	5,550.53	-716.16	-30.02	29.56	0.00	0.00	0.00
5,700.00	8.00	182.40	5,649.56	-730.06	-30.60	30.13	0.00	0.00	0.00
5,800.00	8.00	182.40	5,748.58	-743.97	-31.18	30.70	0.00	0.00	0.00
5,900.00	8.00	182.40	5,847.61	-757.87	-31.76	31.28	0.00	0.00	0.00

Planned Survey									
Measured Depth (usft)	Inclination (°)	Azimuth (°)	Vertical Depth (usft)	+N/-S (usft)	+E/-W (usft)	Vertical Section (usft)	Dogleg Rate (°/100usft)	Build Rate (°/100usft)	Turn Rate (°/100usft)
6,000.00	8.00	182.40	5,946.64	-771.78	-32.35	31.85	0.00	0.00	0.00
6,100.00	8.00	182.40	6,045.66	-785.68	-32.93	32.43	0.00	0.00	0.00
6,200.00	8.00	182.40	6,144.69	-799.59	-33.51	33.00	0.00	0.00	0.00
6,300.00	8.00	182.40	6,243.72	-813.49	-34.10	33.57	0.00	0.00	0.00
6,400.00	8.00	182.40	6,342.74	-827.40	-34.68	34.15	0.00	0.00	0.00
6,488.73	8.00	182.40	6,430.61	-839.74	-35.20	34.66	0.00	0.00	0.00
KOP @ 6488.73ft: DLS = 9°/100'									
6,500.00	8.00	175.11	6,441.77	-841.30	-35.16	34.82	9.00	-0.04	-64.73
6,550.00	9.40	146.44	6,491.22	-848.17	-32.61	37.94	9.00	2.80	-57.33
6,600.00	12.37	128.28	6,540.33	-854.89	-26.14	44.93	9.00	5.94	-36.31
6,650.00	16.05	117.68	6,588.80	-861.42	-15.81	55.77	9.00	7.38	-21.20
6,700.00	20.07	111.09	6,636.33	-867.73	-1.68	70.38	9.00	8.03	-13.18
6,750.00	24.25	106.65	6,682.63	-873.76	16.17	88.67	9.00	8.36	-8.87
6,800.00	28.52	103.47	6,727.41	-879.48	37.63	110.53	9.00	8.55	-6.37
6,850.00	32.85	101.06	6,770.40	-884.87	62.56	135.82	9.00	8.66	-4.82
6,900.00	37.22	99.16	6,811.33	-889.88	90.82	164.40	9.00	8.73	-3.81
6,950.00	41.61	97.60	6,849.95	-894.49	122.22	196.07	9.00	8.78	-3.11
7,000.00	46.02	96.30	6,886.02	-898.66	156.57	230.65	9.00	8.82	-2.61
7,050.00	50.44	95.17	6,919.32	-902.37	193.66	267.93	9.00	8.84	-2.25
7,100.00	54.87	94.18	6,949.65	-905.60	233.27	307.66	9.00	8.86	-1.98
7,150.00	59.31	93.29	6,976.81	-908.32	275.15	349.62	9.00	8.88	-1.78
7,200.00	63.75	92.48	7,000.64	-910.53	319.03	393.54	9.00	8.89	-1.62
7,250.00	68.20	91.73	7,020.99	-912.21	364.66	439.15	9.00	8.90	-1.50
7,300.00	72.65	91.03	7,037.74	-913.34	411.74	486.16	9.00	8.90	-1.41
7,350.00	77.10	90.36	7,050.78	-913.92	460.00	534.30	9.00	8.91	-1.34
7,400.00	81.56	89.71	7,060.03	-913.95	509.12	583.25	9.00	8.91	-1.29
7,450.00	86.01	89.08	7,065.45	-913.42	558.81	632.73	9.00	8.91	-1.27
7,493.43	89.88	88.54	7,067.00	-912.52	602.19	675.89	9.00	8.91	-1.25
End Build @ 7493.43ft - 5 1/2"									
7,500.00	89.88	88.54	7,067.01	-912.35	608.76	682.42	0.00	0.00	0.00
7,600.00	89.88	88.54	7,067.21	-909.79	708.73	781.83	0.00	0.00	0.00
7,700.00	89.88	88.54	7,067.42	-907.24	808.70	881.24	0.00	0.00	0.00
7,800.00	89.88	88.54	7,067.62	-904.68	908.66	980.65	0.00	0.00	0.00
7,900.00	89.88	88.54	7,067.82	-902.12	1,008.63	1,080.06	0.00	0.00	0.00
8,000.00	89.88	88.54	7,068.02	-899.57	1,108.60	1,179.47	0.00	0.00	0.00
8,100.00	89.88	88.54	7,068.22	-897.01	1,208.56	1,278.88	0.00	0.00	0.00
8,200.00	89.88	88.54	7,068.43	-894.46	1,308.53	1,378.29	0.00	0.00	0.00
8,300.00	89.88	88.54	7,068.63	-891.90	1,408.50	1,477.69	0.00	0.00	0.00
8,400.00	89.88	88.54	7,068.83	-889.34	1,508.47	1,577.10	0.00	0.00	0.00
8,500.00	89.88	88.54	7,069.03	-886.79	1,608.43	1,676.51	0.00	0.00	0.00
8,600.00	89.88	88.54	7,069.23	-884.23	1,708.40	1,775.92	0.00	0.00	0.00
8,700.00	89.88	88.54	7,069.44	-881.67	1,808.37	1,875.33	0.00	0.00	0.00
8,800.00	89.88	88.54	7,069.64	-879.12	1,908.33	1,974.74	0.00	0.00	0.00
8,900.00	89.88	88.54	7,069.84	-876.56	2,008.30	2,074.15	0.00	0.00	0.00
9,000.00	89.88	88.54	7,070.04	-874.00	2,108.27	2,173.56	0.00	0.00	0.00
9,100.00	89.88	88.54	7,070.24	-871.45	2,208.23	2,272.97	0.00	0.00	0.00
9,200.00	89.88	88.54	7,070.45	-868.89	2,308.20	2,372.38	0.00	0.00	0.00
9,300.00	89.88	88.54	7,070.65	-866.33	2,408.17	2,471.79	0.00	0.00	0.00
9,400.00	89.88	88.54	7,070.85	-863.78	2,508.14	2,571.20	0.00	0.00	0.00
9,500.00	89.88	88.54	7,071.05	-861.22	2,608.10	2,670.61	0.00	0.00	0.00
9,600.00	89.88	88.54	7,071.25	-858.66	2,708.07	2,770.02	0.00	0.00	0.00
9,700.00	89.88	88.54	7,071.46	-856.11	2,808.04	2,869.43	0.00	0.00	0.00
9,800.00	89.88	88.54	7,071.66	-853.55	2,908.00	2,968.84	0.00	0.00	0.00
9,900.00	89.88	88.54	7,071.86	-850.99	3,007.97	3,068.25	0.00	0.00	0.00
10,000.00	89.88	88.54	7,072.06	-848.44	3,107.94	3,167.66	0.00	0.00	0.00
10,100.00	89.88	88.54	7,072.26	-845.88	3,207.91	3,267.07	0.00	0.00	0.00
10,200.00	89.88	88.54	7,072.47	-843.32	3,307.87	3,366.48	0.00	0.00	0.00
10,300.00	89.88	88.54	7,072.67	-840.77	3,407.84	3,465.89	0.00	0.00	0.00
10,400.00	89.88	88.54	7,072.87	-838.21	3,507.81	3,565.30	0.00	0.00	0.00
10,500.00	89.88	88.54	7,073.07	-835.65	3,607.77	3,664.71	0.00	0.00	0.00
10,600.00	89.88	88.54	7,073.27	-833.10	3,707.74	3,764.12	0.00	0.00	0.00
10,700.00	89.88	88.54	7,073.48	-830.54	3,807.71	3,863.52	0.00	0.00	0.00
10,800.00	89.88	88.54	7,073.68	-827.98	3,907.68	3,962.93	0.00	0.00	0.00
10,900.00	89.88	88.54	7,073.88	-825.43	4,007.64	4,062.34	0.00	0.00	0.00
11,000.00	89.88	88.54	7,074.08	-822.87	4,107.61	4,161.75	0.00	0.00	0.00
11,100.00	89.88	88.54	7,074.28	-820.32	4,207.58	4,261.16	0.00	0.00	0.00

Planned Survey										
Measured Depth (usft)	Inclination (°)	Azimuth (°)	Vertical Depth (usft)	+N/-S (usft)	+E/-W (usft)	Vertical Section (usft)	Dogleg Rate (°/100usft)	Build Rate (°/100usft)	Turn Rate (°/100usft)	
11,200.00	89.88	88.54	7,074.49	-817.76	4,307.54	4,360.57	0.00	0.00	0.00	
11,300.00	89.88	88.54	7,074.69	-815.20	4,407.51	4,459.98	0.00	0.00	0.00	
11,400.00	89.88	88.54	7,074.89	-812.65	4,507.48	4,559.39	0.00	0.00	0.00	
11,500.00	89.88	88.54	7,075.09	-810.09	4,607.45	4,658.80	0.00	0.00	0.00	
11,600.00	89.88	88.54	7,075.29	-807.53	4,707.41	4,758.21	0.00	0.00	0.00	
11,700.00	89.88	88.54	7,075.50	-804.98	4,807.38	4,857.62	0.00	0.00	0.00	
11,800.00	89.88	88.54	7,075.70	-802.42	4,907.35	4,957.03	0.00	0.00	0.00	
11,900.00	89.88	88.54	7,075.90	-799.86	5,007.31	5,056.44	0.00	0.00	0.00	
12,000.00	89.88	88.54	7,076.10	-797.31	5,107.28	5,155.85	0.00	0.00	0.00	
12,100.00	89.88	88.54	7,076.30	-794.75	5,207.25	5,255.26	0.00	0.00	0.00	
12,200.00	89.88	88.54	7,076.51	-792.19	5,307.22	5,354.67	0.00	0.00	0.00	
12,300.00	89.88	88.54	7,076.71	-789.64	5,407.18	5,454.08	0.00	0.00	0.00	
12,400.00	89.88	88.54	7,076.91	-787.08	5,507.15	5,553.49	0.00	0.00	0.00	
12,500.00	89.88	88.54	7,077.11	-784.52	5,607.12	5,652.90	0.00	0.00	0.00	
12,600.00	89.88	88.54	7,077.31	-781.97	5,707.08	5,752.31	0.00	0.00	0.00	
12,700.00	89.88	88.54	7,077.52	-779.41	5,807.05	5,851.72	0.00	0.00	0.00	
12,800.00	89.88	88.54	7,077.72	-776.85	5,907.02	5,951.13	0.00	0.00	0.00	
12,900.00	89.88	88.54	7,077.92	-774.30	6,006.99	6,050.54	0.00	0.00	0.00	
13,000.00	89.88	88.54	7,078.12	-771.74	6,106.95	6,149.94	0.00	0.00	0.00	
13,100.00	89.88	88.54	7,078.32	-769.18	6,206.92	6,249.35	0.00	0.00	0.00	
13,200.00	89.88	88.54	7,078.53	-766.63	6,306.89	6,348.76	0.00	0.00	0.00	
13,300.00	89.88	88.54	7,078.73	-764.07	6,406.85	6,448.17	0.00	0.00	0.00	
13,400.00	89.88	88.54	7,078.93	-761.51	6,506.82	6,547.58	0.00	0.00	0.00	
13,500.00	89.88	88.54	7,079.13	-758.96	6,606.79	6,646.99	0.00	0.00	0.00	
13,600.00	89.88	88.54	7,079.33	-756.40	6,706.75	6,746.40	0.00	0.00	0.00	
13,700.00	89.88	88.54	7,079.54	-753.84	6,806.72	6,845.81	0.00	0.00	0.00	
13,800.00	89.88	88.54	7,079.74	-751.29	6,906.69	6,945.22	0.00	0.00	0.00	
13,900.00	89.88	88.54	7,079.94	-748.73	7,006.66	7,044.63	0.00	0.00	0.00	
14,000.00	89.88	88.54	7,080.14	-746.18	7,106.62	7,144.04	0.00	0.00	0.00	
14,100.00	89.88	88.54	7,080.34	-743.62	7,206.59	7,243.45	0.00	0.00	0.00	
14,200.00	89.88	88.54	7,080.55	-741.06	7,306.56	7,342.86	0.00	0.00	0.00	
14,300.00	89.88	88.54	7,080.75	-738.51	7,406.52	7,442.27	0.00	0.00	0.00	
14,400.00	89.88	88.54	7,080.95	-735.95	7,506.49	7,541.68	0.00	0.00	0.00	
14,500.00	89.88	88.54	7,081.15	-733.39	7,606.46	7,641.09	0.00	0.00	0.00	
14,600.00	89.88	88.54	7,081.35	-730.84	7,706.43	7,740.50	0.00	0.00	0.00	
14,700.00	89.88	88.54	7,081.56	-728.28	7,806.39	7,839.91	0.00	0.00	0.00	
14,800.00	89.88	88.54	7,081.76	-725.72	7,906.36	7,939.32	0.00	0.00	0.00	
14,900.00	89.88	88.54	7,081.96	-723.17	8,006.33	8,038.73	0.00	0.00	0.00	
15,000.00	89.88	88.54	7,082.16	-720.61	8,106.29	8,138.14	0.00	0.00	0.00	
15,100.00	89.88	88.54	7,082.36	-718.05	8,206.26	8,237.55	0.00	0.00	0.00	
15,200.00	89.88	88.54	7,082.57	-715.50	8,306.23	8,336.96	0.00	0.00	0.00	
15,300.00	89.88	88.54	7,082.77	-712.94	8,406.20	8,436.37	0.00	0.00	0.00	
15,400.00	89.88	88.54	7,082.97	-710.38	8,506.16	8,535.77	0.00	0.00	0.00	
15,414.73	89.88	88.54	7,083.00	-710.01	8,520.89	8,550.42	0.00	0.00	0.00	
TD Well @ 15414.73ft										

Casing Points						
Measured Depth (usft)	Vertical Depth (usft)	Name			Casing Diameter (")	Hole Diameter (")
1,762.12	1,750.00	9 5/8"			9-5/8	13-1/2
7,493.43	7,067.00	5 1/2"			5-1/2	8-1/2

Plan Annotations					
Measured Depth (usft)	Vertical Depth (usft)	Local Coordinates		Comment	
		+N/-S (usft)	+E/-W (usft)		
250.00	250.00	0.00	0.00	Begin Nudge @ 250.00ft	
650.00	648.70	-27.86	-1.17	End Nudge @ 650.00ft	
6,488.73	6,430.61	-839.74	-35.20	KOP @ 6488.73ft: DLS = 9°/100'	
7,493.43	7,067.00	-912.52	602.19	End Build @ 7493.43ft	
15,414.73	7,083.00	-710.01	8,520.89	TD Well @ 15414.73ft	