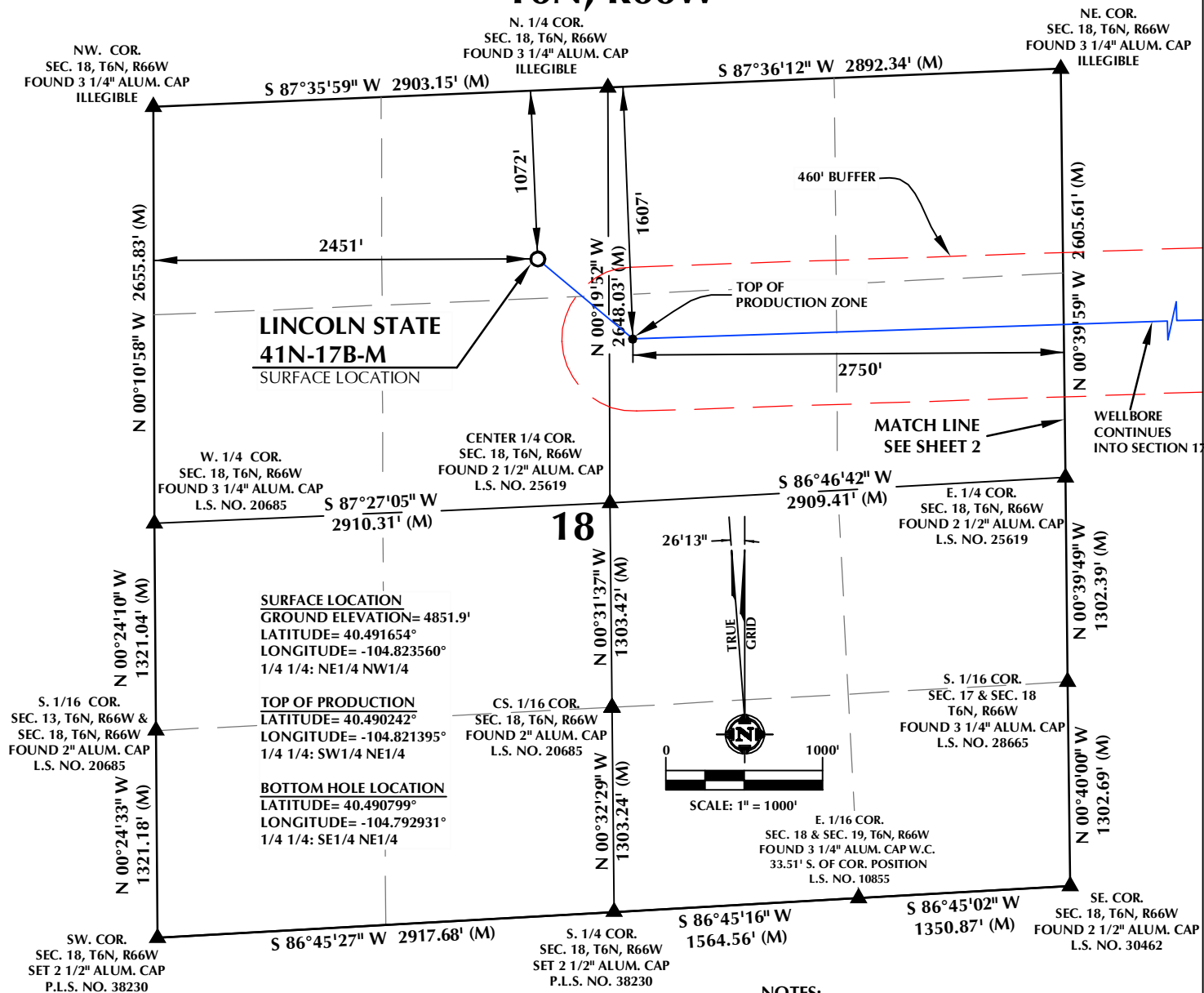


# T6N, R66W



## CERTIFICATE OF SURVEYOR:

THIS IS TO CERTIFY THAT THE ABOVE MAP WAS PREPARED FROM FIELD NOTES OF ACTUAL SURVEY MADE BY ME OR UNDER MY SUPERVISION AND THAT THE SAME ARE TRUE AND CORRECT TO THE BEST OF MY KNOWLEDGE AND BELIEF. THIS CERTIFICATE DOES NOT REPRESENT A LAND SURVEY PLAT OR IMPROVEMENT SURVEY PLAT AS DEFINED BY C.S. 49-512-302 AND CANNOT BE RELIED UPON TO DETERMINE OWNERSHIP.

**JOHN R. SLAUGH**  
PROFESSIONAL LAND SURVEYOR  
COLORADO REGISTRATION NUMBER 38230  
11/30/17

**NOTICE:**  
ACCORDING TO COLORADO STATE LAW YOU MUST COMMENCE LEGAL ACTION BASED UPON ANY DEFECT IN THIS SURVEY WITHIN THREE YEARS AFTER YOU FIRST DISCOVER SUCH DEFECT. IN NO EVENT MAY ANY ACTION BASED UPON ANY DEFECT IN THIS SURVEY BE COMMENCED MORE THAN TEN YEARS FROM THE DATE ON THE CERTIFICATION SHOWN HEREON.

## WELL DISTANCES:

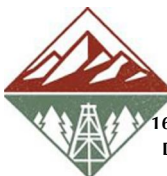
**BUILDING: ±995' W**  
**BUILDING UNIT: ±995' W**  
**HIGH OCCUPANCY BUILDING UNIT: 5280'+**  
**DESIGNATED OUTSIDE ACTIVITY AREA: 5280'+**  
**PUBLIC ROAD: ±1057' N**  
**ABOVE GROUND UTILITY: ±1038' N**  
**RAILROAD: 5280'+**  
**PROPERTY LINE: ±453' E**

## NOTES:

- ▲ INDICATES SECTION CORNER.
- ⊙ INDICATES CALCULATED CORNER.
- DRAWING LATITUDE AND LONGITUDE COORDINATES ARE NAD 83 (2011)(EPOCH:2010).
- ELEVATION BASED ON NAVD88 (GEOID12B).
- BASIS OF BEARING DERIVED FROM COLORADO COORDINATE SYSTEM OF 1983 NORTH ZONE.
- ALL MEASURED DISTANCES ARE GRID.
- COMBINED SCALE FACTOR: .99973779 CALCULATED FROM THE N. 1/4 CORNER OF SECTION 18, T6N, R66W.
- OPERATOR: ROB WILSON / PDOP = 1.8.
- SEE ADDENDUM TO WELL LOCATION CERTIFICATE FOR EXISTING IMPROVEMENTS WITHIN 500' OF THE WELL PAD.
- WELL FOOTAGES ARE MEASURED AT RIGHT ANGLES TO THE SECTION LINES.
- THE BOTTOM OF HOLE BEARS N88°05'03"E, 7920' FROM THE TOP OF PRODUCTION ZONE.

## WELL PAD - LINCOLN STATE 3-18 PAD

**LINCOLN STATE 41N-17B-M**  
**WELL LOCATION CERTIFICATE**  
**1072' FNL & 2451' FNL NENW (SURFACE)**  
**1607' FNL & 2750' FNL SWNE (TOP OF PRODUCTION)**  
**LOCATED IN SECTION 18**  
**1673' FNL & 150' FNL SENE (BOTTOM)**  
**LOCATED IN SECTION 17**  
**T6N, R66W, 6TH P.M.**  
**WELD COUNTY, COLORADO**



**SRC ENERGY**  
1675 Broadway, Suite 2600  
Denver, Colorado 80202



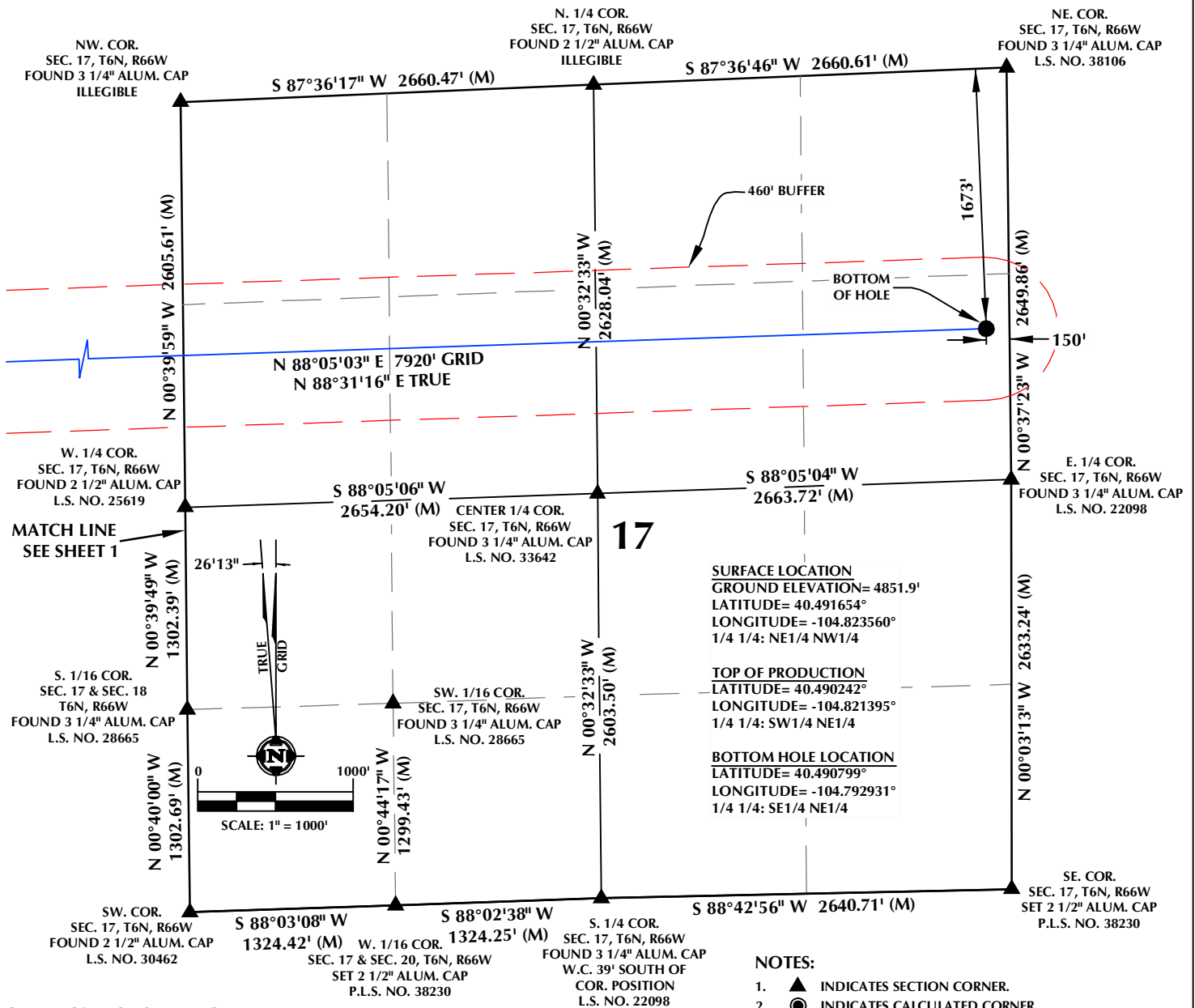
## CONSULTING, LLC

**SHERIDAN OFFICE**  
1095 Saberton Avenue  
Sheridan, Wyoming 82801  
Phone 307-674-0609

**LOVELAND OFFICE**  
1635 Foxtrail Drive, Suite 204  
Loveland, Colorado 80538  
Phone 970-776-4331

DRAFTED BY: LMO	CHECKED BY: JRS	SHEET NO: 1
DATE DRAFTED: 11/17/17	DATE SURVEYED: 6/22/17	1 OF 2
REVISED: 11/30/17	FILE NAME: 17-86	

# T6N, R66W



## CERTIFICATE OF SURVEYOR:

THIS IS TO CERTIFY THAT THE ABOVE MAP WAS PREPARED FROM FIELD NOTES OF ACTUAL SURVEY MADE BY ME OR UNDER MY SUPERVISION AND THAT THE SAME ARE TRUE AND CORRECT TO THE BEST OF MY KNOWLEDGE AND BELIEF. THIS CERTIFICATE DOES NOT REPRESENT A LAND SURVEY PLAT OR IMPROVEMENT SURVEY PLAT AS DEFINED BY C.R.S. 20-513-02 AND CANNOT BE RELIED UPON TO DETERMINE OWNERSHIP.

*John R. Slaugh*  
**JOHN R. SLAUGH**  
 PROFESSIONAL LAND SURVEYOR  
 COLORADO REGISTRATION NUMBER 38230

**NOTICE:**  
 ACCORDING TO COLORADO STATE LAW YOU MUST COMPLY WITH ALL LEGAL ACTION BASED UPON ANY DEFECT IN THIS SURVEY WITHIN THREE YEARS AFTER YOU FIRST DISCOVER SUCH DEFECT. IN NO EVENT MAY ANY ACTION BASED UPON ANY DEFECT IN THIS SURVEY BE COMMENCED MORE THAN TEN YEARS FROM THE DATE ON THE CERTIFICATION SHOWN HEREON.

## WELL DISTANCES:

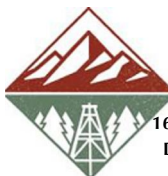
**BUILDING:** ±995' W  
**BUILDING UNIT:** ±995' W  
**HIGH OCCUPANCY BUILDING UNIT:** 5280'+  
**DESIGNATED OUTSIDE ACTIVITY AREA:** 5280'+  
**PUBLIC ROAD:** ±1057' N  
**ABOVE GROUND UTILITY:** ±1038' N  
**RAILROAD:** 5280'+  
**PROPERTY LINE:** ±453' E

## NOTES:

- ▲ INDICATES SECTION CORNER.
- INDICATES CALCULATED CORNER.
- DRAWING LATITUDE AND LONGITUDE COORDINATES ARE NAD 83 (2011)(EPOCH:2010).
- ELEVATION BASED ON NAVD88 (GEOID12B).
- BASIS OF BEARING DERIVED FROM COLORADO COORDINATE SYSTEM OF 1983 NORTH ZONE.
- ALL MEASURED DISTANCES ARE GRID.  
COMBINED SCALE FACTOR: .99973779 CALCULATED FROM THE N. 1/4 CORNER OF SECTION 18, T6N, R66W.
- OPERATOR: ROB WILSON / PDOP = 1.8.
- SEE ADDENDUM TO WELL LOCATION CERTIFICATE FOR EXISTING IMPROVEMENTS WITHIN 500' OF THE WELL PAD.
- WELL FOOTAGES ARE MEASURED AT RIGHT ANGLES TO THE SECTION LINES.
- THE BOTTOM OF HOLE BEARS N88°05'03"E, 7920' FROM THE TOP OF PRODUCTION ZONE.

## WELL PAD - LINCOLN STATE 3-18 PAD

**LINCOLN STATE 41N-17B-M**  
**WELL LOCATION CERTIFICATE**  
 1072' FNL & 2451' FWL NENW (SURFACE)  
 1607' FNL & 2750' FEL SWNE (TOP OF PRODUCTION)  
 LOCATED IN SECTION 18  
 1673' FNL & 150' FEL SENE (BOTTOM)  
 LOCATED IN SECTION 17  
 T6N, R66W, 6TH P.M.  
 WELD COUNTY, COLORADO



**SRC ENERGY**  
 1675 Broadway, Suite 2600  
 Denver, Colorado 80202



## CONSULTING, LLC

**SHERIDAN OFFICE**  
 1095 Saberton Avenue  
 Sheridan, Wyoming 82801  
 Phone 307-674-0609

**LOVELAND OFFICE**  
 1635 Foxtrail Drive, Suite 204  
 Loveland, Colorado 80538  
 Phone 970-776-4331

DRAFTED BY:	LMO	CHECKED BY:	JRS	SHEET NO:
DATE DRAFTED:	11/17/17	DATE SURVEYED:	6/22/17	2
REVISED:	11/30/17	FILE NAME:	17-86	2 OF 2