

# **SRC ENERGY**

**WELD COUNTY (NAD83, TRUE NORTH)  
6N-66W-18 LINCOLN STATE 3-18 PAD  
LINCOLN STATE 41N-17B-M**

**Wellbore #1**

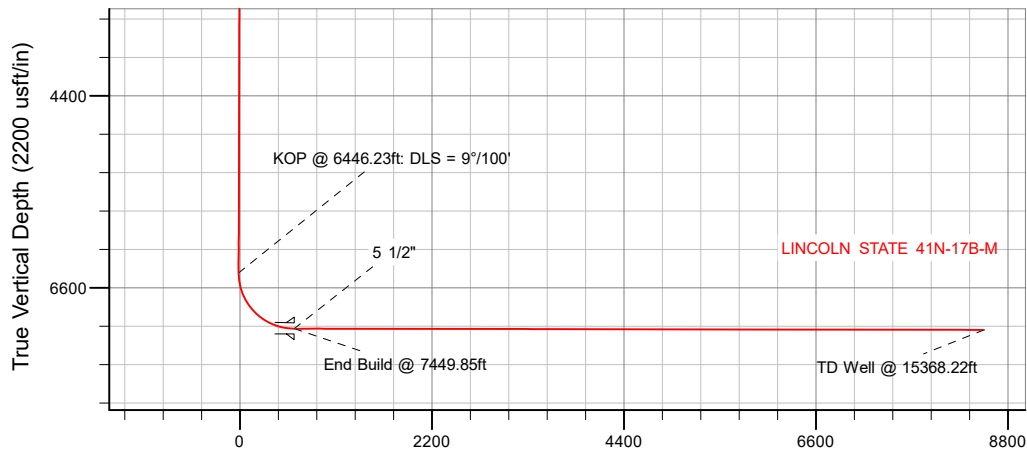
**Plan: Design #1**

## **Standard Planning Report**

**12 December, 2017**

# SRC ENERGY

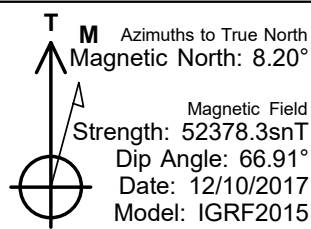
CASING DETAILS			
TVD	MD	Name	Size
1750.00	1754.17	9 5/8"	9-5/8
7067.00	7449.85	5 1/2"	5-1/2



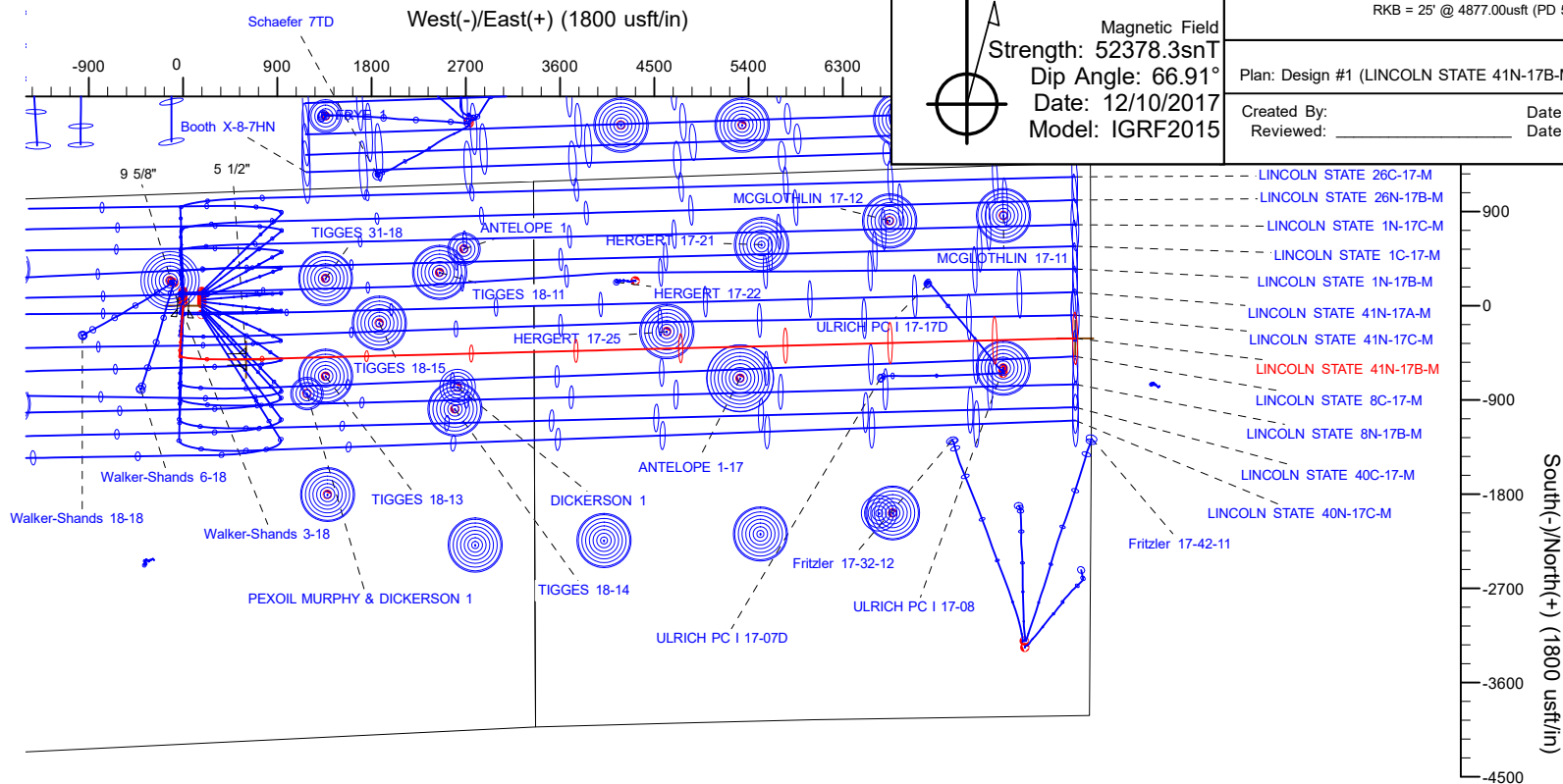
Vertical Section at 92.08° (2200 usft/in)

SECTION DETAILS										
Sec	MD	Inc	Azi	TVD	+N/-S	+E/-W	Dleg	TFace	VSec	Target
1	0.00	0.00	0.00	0.00	0.00	0.00	0.00	0.00	0.00	
2	250.00	0.00		250.00	0.00	0.00	0.00	0.00	0.00	
3	475.00	4.50	184.00	474.77	-8.81	-0.62	2.00	184.00	-0.30	
4	6446.23	4.50	184.00	6427.59	-476.17	-33.30	0.00	0.00	-15.96	
5	7449.85	89.90	88.55	7067.00	-510.10	603.24	9.00	-95.44	621.39	
6	15368.22	89.90	88.55	7081.00	-310.00	8519.07	0.00	0.00	8524.71	LINCOLN STATE 41N-17B-M_TD

WELLBORE TARGET DETAILS (LAT/LONG)					
Name	TVD	+N/-S	+E/-W	Latitude	Longitude
LINCOLN STATE 41N-17B-M_SHL	0.00	0.00	0.00	40.491654	-104.823560
LINCOLN STATE 41N-17B-M_TD	7081.00	-310.00	8519.07	40.490799	-104.792931



WELL DETAILS: LINCOLN STATE 41N-17B-M	
GL = 4852'	
RKB = 25' @ 4877.00usft (PD 562)	
Plan: Design #1 (LINCOLN STATE 41N-17B-M/Wellbore #1)	
Created By:	Date: 12/12/2017
Reviewed: _____	Date: _____



Project	WELD COUNTY (NAD83, TRUE NORTH)		
Map System:	US State Plane 1983	System Datum:	Mean Sea Level
Geo Datum:	North American Datum 1983		
Map Zone:	Colorado Northern Zone		

Site	6N-66W-18 LINCOLN STATE 3-18 PAD		
Site Position:		Northing:	1,422,807.42 usft
From:	Lat/Long	Easting:	3,188,319.02 usft
Position Uncertainty:	0.00 usft	Slot Radius:	13-3/16 "
		Latitude:	40.492034
		Longitude:	-104.822909
		Grid Convergence:	0.44 °

Well	LINCOLN STATE 41N-17B-M		
Well Position	+N/-S	-138.44 usft	Northing:
	+E/-W	-181.07 usft	Easting:
Position Uncertainty	3.28 usft	Wellhead Elevation:	
		Latitude:	40.491654
		Longitude:	-104.823560
		Ground Level:	4,852.00 usft

Wellbore	Wellbore #1				
Magnetics	Model Name	Sample Date	Declination (°)	Dip Angle (°)	Field Strength (nT)
	IGRF2015	12/10/2017	8.20	66.91	52,378.29933846

Design	Design #1			
Audit Notes:				
Version:	Phase:	PLAN	Tie On Depth:	0.00
Vertical Section:	Depth From (TVD) (usft)	+N/-S (usft)	+E/-W (usft)	Direction (°)
	0.00	0.00	0.00	92.08

Plan Survey Tool Program	Date	12/12/2017		
Depth From (usft)	Depth To (usft)	Survey (Wellbore)	Tool Name	Remarks
1	0.00	1,750.00	Design #1 (Wellbore #1)	SRC Energy_ISCWSA REV 2
				Fixed:v2:crustal field declinatio
2	1,750.00	15,368.22	Design #1 (Wellbore #1)	SRC Energy_ISCWSA REV 2
				Fixed:v2:crustal field declinatio

Plan Sections										
Measured Depth (usft)	Inclination (°)	Azimuth (°)	Vertical Depth (usft)	+N/-S (usft)	+E/-W (usft)	Dogleg Rate (°/100usft)	Build Rate (°/100usft)	Turn Rate (°/100usft)	TFO (°)	Target
0.00	0.00	0.00	0.00	0.00	0.00	0.00	0.00	0.00	0.00	
250.00	0.00	0.00	250.00	0.00	0.00	0.00	0.00	0.00	0.00	
475.00	4.50	184.00	474.77	-8.81	-0.62	2.00	2.00	0.00	184.00	
6,446.23	4.50	184.00	6,427.59	-476.17	-33.30	0.00	0.00	0.00	0.00	
7,449.85	89.90	88.55	7,067.00	-510.10	603.24	9.00	8.51	-9.51	-95.44	
15,368.22	89.90	88.55	7,081.00	-310.00	8,519.07	0.00	0.00	0.00	0.00	LINCOLN STATE 41N

Planned Survey									
Measured Depth (usft)	Inclination (°)	Azimuth (°)	Vertical Depth (usft)	+N/-S (usft)	+E/-W (usft)	Vertical Section (usft)	Dogleg Rate (°/100usft)	Build Rate (°/100usft)	Turn Rate (°/100usft)
0.00	0.00	0.00	0.00	0.00	0.00	0.00	0.00	0.00	0.00
100.00	0.00	0.00	100.00	0.00	0.00	0.00	0.00	0.00	0.00
200.00	0.00	0.00	200.00	0.00	0.00	0.00	0.00	0.00	0.00
250.00	0.00	0.00	250.00	0.00	0.00	0.00	0.00	0.00	0.00
Begin Nudge @ 250.00ft									
300.00	1.00	184.00	300.00	-0.44	-0.03	-0.01	2.00	2.00	0.00
400.00	3.00	184.00	399.93	-3.92	-0.27	-0.13	2.00	2.00	0.00
475.00	4.50	184.00	474.77	-8.81	-0.62	-0.30	2.00	2.00	0.00
End Nudge @ 475.00ft									
500.00	4.50	184.00	499.69	-10.77	-0.75	-0.36	0.00	0.00	0.00
600.00	4.50	184.00	599.38	-18.59	-1.30	-0.62	0.00	0.00	0.00
700.00	4.50	184.00	699.08	-26.42	-1.85	-0.89	0.00	0.00	0.00
800.00	4.50	184.00	798.77	-34.25	-2.39	-1.15	0.00	0.00	0.00
900.00	4.50	184.00	898.46	-42.07	-2.94	-1.41	0.00	0.00	0.00
1,000.00	4.50	184.00	998.15	-49.90	-3.49	-1.67	0.00	0.00	0.00
1,100.00	4.50	184.00	1,097.84	-57.73	-4.04	-1.93	0.00	0.00	0.00
1,200.00	4.50	184.00	1,197.53	-65.55	-4.58	-2.20	0.00	0.00	0.00
1,300.00	4.50	184.00	1,297.23	-73.38	-5.13	-2.46	0.00	0.00	0.00
1,400.00	4.50	184.00	1,396.92	-81.21	-5.68	-2.72	0.00	0.00	0.00
1,500.00	4.50	184.00	1,496.61	-89.03	-6.23	-2.98	0.00	0.00	0.00
1,600.00	4.50	184.00	1,596.30	-96.86	-6.77	-3.25	0.00	0.00	0.00
1,700.00	4.50	184.00	1,695.99	-104.69	-7.32	-3.51	0.00	0.00	0.00
1,754.17	4.50	184.00	1,750.00	-108.93	-7.62	-3.65	0.00	0.00	0.00
9 5/8"									
1,800.00	4.50	184.00	1,795.68	-112.51	-7.87	-3.77	0.00	0.00	0.00
1,900.00	4.50	184.00	1,895.38	-120.34	-8.42	-4.03	0.00	0.00	0.00
2,000.00	4.50	184.00	1,995.07	-128.17	-8.96	-4.30	0.00	0.00	0.00
2,100.00	4.50	184.00	2,094.76	-136.00	-9.51	-4.56	0.00	0.00	0.00
2,200.00	4.50	184.00	2,194.45	-143.82	-10.06	-4.82	0.00	0.00	0.00
2,300.00	4.50	184.00	2,294.14	-151.65	-10.60	-5.08	0.00	0.00	0.00
2,400.00	4.50	184.00	2,393.83	-159.48	-11.15	-5.34	0.00	0.00	0.00
2,500.00	4.50	184.00	2,493.53	-167.30	-11.70	-5.61	0.00	0.00	0.00
2,600.00	4.50	184.00	2,593.22	-175.13	-12.25	-5.87	0.00	0.00	0.00
2,700.00	4.50	184.00	2,692.91	-182.96	-12.79	-6.13	0.00	0.00	0.00
2,800.00	4.50	184.00	2,792.60	-190.78	-13.34	-6.39	0.00	0.00	0.00
2,900.00	4.50	184.00	2,892.29	-198.61	-13.89	-6.66	0.00	0.00	0.00
3,000.00	4.50	184.00	2,991.99	-206.44	-14.44	-6.92	0.00	0.00	0.00
3,100.00	4.50	184.00	3,091.68	-214.26	-14.98	-7.18	0.00	0.00	0.00
3,200.00	4.50	184.00	3,191.37	-222.09	-15.53	-7.44	0.00	0.00	0.00
3,300.00	4.50	184.00	3,291.06	-229.92	-16.08	-7.71	0.00	0.00	0.00
3,400.00	4.50	184.00	3,390.75	-237.74	-16.62	-7.97	0.00	0.00	0.00
3,500.00	4.50	184.00	3,490.44	-245.57	-17.17	-8.23	0.00	0.00	0.00
3,600.00	4.50	184.00	3,590.14	-253.40	-17.72	-8.49	0.00	0.00	0.00
3,700.00	4.50	184.00	3,689.83	-261.22	-18.27	-8.76	0.00	0.00	0.00
3,800.00	4.50	184.00	3,789.52	-269.05	-18.81	-9.02	0.00	0.00	0.00
3,900.00	4.50	184.00	3,889.21	-276.88	-19.36	-9.28	0.00	0.00	0.00
4,000.00	4.50	184.00	3,988.90	-284.70	-19.91	-9.54	0.00	0.00	0.00
4,100.00	4.50	184.00	4,088.59	-292.53	-20.46	-9.80	0.00	0.00	0.00
4,200.00	4.50	184.00	4,188.29	-300.36	-21.00	-10.07	0.00	0.00	0.00
4,300.00	4.50	184.00	4,287.98	-308.18	-21.55	-10.33	0.00	0.00	0.00
4,400.00	4.50	184.00	4,387.67	-316.01	-22.10	-10.59	0.00	0.00	0.00
4,500.00	4.50	184.00	4,487.36	-323.84	-22.64	-10.85	0.00	0.00	0.00
4,600.00	4.50	184.00	4,587.05	-331.67	-23.19	-11.12	0.00	0.00	0.00
4,700.00	4.50	184.00	4,686.74	-339.49	-23.74	-11.38	0.00	0.00	0.00
4,800.00	4.50	184.00	4,786.44	-347.32	-24.29	-11.64	0.00	0.00	0.00
4,900.00	4.50	184.00	4,886.13	-355.15	-24.83	-11.90	0.00	0.00	0.00
5,000.00	4.50	184.00	4,985.82	-362.97	-25.38	-12.17	0.00	0.00	0.00
5,100.00	4.50	184.00	5,085.51	-370.80	-25.93	-12.43	0.00	0.00	0.00
5,200.00	4.50	184.00	5,185.20	-378.63	-26.48	-12.69	0.00	0.00	0.00
5,300.00	4.50	184.00	5,284.90	-386.45	-27.02	-12.95	0.00	0.00	0.00
5,400.00	4.50	184.00	5,384.59	-394.28	-27.57	-13.21	0.00	0.00	0.00
5,500.00	4.50	184.00	5,484.28	-402.11	-28.12	-13.48	0.00	0.00	0.00
5,600.00	4.50	184.00	5,583.97	-409.93	-28.67	-13.74	0.00	0.00	0.00
5,700.00	4.50	184.00	5,683.66	-417.76	-29.21	-14.00	0.00	0.00	0.00
5,800.00	4.50	184.00	5,783.35	-425.59	-29.76	-14.26	0.00	0.00	0.00
5,900.00	4.50	184.00	5,883.05	-433.41	-30.31	-14.53	0.00	0.00	0.00

Planned Survey									
Measured Depth (usft)	Inclination (°)	Azimuth (°)	Vertical Depth (usft)	+N/-S (usft)	+E/-W (usft)	Vertical Section (usft)	Dogleg Rate (°/100usft)	Build Rate (°/100usft)	Turn Rate (°/100usft)
6,000.00	4.50	184.00	5,982.74	-441.24	-30.85	-14.79	0.00	0.00	0.00
6,100.00	4.50	184.00	6,082.43	-449.07	-31.40	-15.05	0.00	0.00	0.00
6,200.00	4.50	184.00	6,182.12	-456.89	-31.95	-15.31	0.00	0.00	0.00
6,300.00	4.50	184.00	6,281.81	-464.72	-32.50	-15.58	0.00	0.00	0.00
6,400.00	4.50	184.00	6,381.50	-472.55	-33.04	-15.84	0.00	0.00	0.00
6,446.23	4.50	184.00	6,427.59	-476.17	-33.30	-15.96	0.00	0.00	0.00
KOP @ 6446.23ft: DLS = 9°/100'									
6,450.00	4.48	179.67	6,431.35	-476.46	-33.31	-15.96	9.00	-0.52	-114.80
6,500.00	6.28	133.90	6,481.15	-480.31	-31.32	-13.83	9.00	3.61	-91.55
6,550.00	9.97	115.02	6,530.65	-484.04	-25.43	-7.81	9.00	7.36	-37.75
6,600.00	14.13	106.68	6,579.54	-487.63	-15.66	2.09	9.00	8.32	-16.68
6,650.00	18.45	102.13	6,627.52	-491.04	-2.07	15.79	9.00	8.64	-9.10
6,700.00	22.83	99.27	6,674.30	-494.27	15.25	33.21	9.00	8.77	-5.72
6,750.00	27.25	97.29	6,719.59	-497.28	36.19	54.25	9.00	8.84	-3.95
6,800.00	31.70	95.83	6,763.11	-500.07	60.62	78.77	9.00	8.89	-2.92
6,850.00	36.15	94.70	6,804.59	-502.62	88.41	106.62	9.00	8.91	-2.27
6,900.00	40.62	93.79	6,843.77	-504.90	119.36	137.64	9.00	8.93	-1.83
6,950.00	45.09	93.02	6,880.42	-506.91	153.30	171.63	9.00	8.94	-1.52
7,000.00	49.56	92.37	6,914.30	-508.63	190.01	208.38	9.00	8.95	-1.30
7,050.00	54.04	91.80	6,945.21	-510.06	229.26	247.66	9.00	8.96	-1.14
7,100.00	58.52	91.29	6,972.96	-511.18	270.83	289.24	9.00	8.96	-1.02
7,150.00	63.00	90.83	6,997.38	-511.98	314.44	332.85	9.00	8.96	-0.92
7,200.00	67.48	90.41	7,018.32	-512.47	359.83	378.22	9.00	8.97	-0.85
7,250.00	71.97	90.01	7,035.64	-512.63	406.72	425.09	9.00	8.97	-0.80
7,300.00	76.45	89.63	7,049.24	-512.48	454.82	473.15	9.00	8.97	-0.76
7,350.00	80.94	89.26	7,059.03	-512.00	503.83	522.12	9.00	8.97	-0.73
7,400.00	85.43	88.90	7,064.97	-511.20	553.46	571.68	9.00	8.97	-0.71
7,449.85	89.90	88.55	7,067.00	-510.10	603.24	621.39	9.00	8.97	-0.70
End Build @ 7449.85ft - 5 1/2"									
7,500.00	89.90	88.55	7,067.09	-508.83	653.38	671.45	0.00	0.00	0.00
7,600.00	89.90	88.55	7,067.27	-506.30	753.35	771.26	0.00	0.00	0.00
7,700.00	89.90	88.55	7,067.44	-503.78	853.31	871.07	0.00	0.00	0.00
7,800.00	89.90	88.55	7,067.62	-501.25	953.28	970.88	0.00	0.00	0.00
7,900.00	89.90	88.55	7,067.80	-498.72	1,053.25	1,070.69	0.00	0.00	0.00
8,000.00	89.90	88.55	7,067.97	-496.20	1,153.22	1,170.50	0.00	0.00	0.00
8,100.00	89.90	88.55	7,068.15	-493.67	1,253.19	1,270.31	0.00	0.00	0.00
8,200.00	89.90	88.55	7,068.33	-491.14	1,353.15	1,370.12	0.00	0.00	0.00
8,300.00	89.90	88.55	7,068.50	-488.61	1,453.12	1,469.93	0.00	0.00	0.00
8,400.00	89.90	88.55	7,068.68	-486.09	1,553.09	1,569.74	0.00	0.00	0.00
8,500.00	89.90	88.55	7,068.86	-483.56	1,653.06	1,669.55	0.00	0.00	0.00
8,600.00	89.90	88.55	7,069.03	-481.03	1,753.02	1,769.36	0.00	0.00	0.00
8,700.00	89.90	88.55	7,069.21	-478.51	1,852.99	1,869.17	0.00	0.00	0.00
8,800.00	89.90	88.55	7,069.39	-475.98	1,952.96	1,968.98	0.00	0.00	0.00
8,900.00	89.90	88.55	7,069.56	-473.45	2,052.93	2,068.79	0.00	0.00	0.00
9,000.00	89.90	88.55	7,069.74	-470.93	2,152.90	2,168.60	0.00	0.00	0.00
9,100.00	89.90	88.55	7,069.92	-468.40	2,252.86	2,268.41	0.00	0.00	0.00
9,200.00	89.90	88.55	7,070.09	-465.87	2,352.83	2,368.22	0.00	0.00	0.00
9,300.00	89.90	88.55	7,070.27	-463.34	2,452.80	2,468.03	0.00	0.00	0.00
9,400.00	89.90	88.55	7,070.45	-460.82	2,552.77	2,567.84	0.00	0.00	0.00
9,500.00	89.90	88.55	7,070.62	-458.29	2,652.74	2,667.65	0.00	0.00	0.00
9,600.00	89.90	88.55	7,070.80	-455.76	2,752.70	2,767.46	0.00	0.00	0.00
9,700.00	89.90	88.55	7,070.98	-453.24	2,852.67	2,867.27	0.00	0.00	0.00
9,800.00	89.90	88.55	7,071.16	-450.71	2,952.64	2,967.08	0.00	0.00	0.00
9,900.00	89.90	88.55	7,071.33	-448.18	3,052.61	3,066.89	0.00	0.00	0.00
10,000.00	89.90	88.55	7,071.51	-445.66	3,152.58	3,166.70	0.00	0.00	0.00
10,100.00	89.90	88.55	7,071.69	-443.13	3,252.54	3,266.51	0.00	0.00	0.00
10,200.00	89.90	88.55	7,071.86	-440.60	3,352.51	3,366.32	0.00	0.00	0.00
10,300.00	89.90	88.55	7,072.04	-438.07	3,452.48	3,466.13	0.00	0.00	0.00
10,400.00	89.90	88.55	7,072.22	-435.55	3,552.45	3,565.94	0.00	0.00	0.00
10,500.00	89.90	88.55	7,072.39	-433.02	3,652.42	3,665.75	0.00	0.00	0.00
10,600.00	89.90	88.55	7,072.57	-430.49	3,752.38	3,765.56	0.00	0.00	0.00
10,700.00	89.90	88.55	7,072.75	-427.97	3,852.35	3,865.37	0.00	0.00	0.00
10,800.00	89.90	88.55	7,072.92	-425.44	3,952.32	3,965.18	0.00	0.00	0.00
10,900.00	89.90	88.55	7,073.10	-422.91	4,052.29	4,064.99	0.00	0.00	0.00
11,000.00	89.90	88.55	7,073.28	-420.39	4,152.25	4,164.80	0.00	0.00	0.00
11,100.00	89.90	88.55	7,073.45	-417.86	4,252.22	4,264.61	0.00	0.00	0.00

Planned Survey									
Measured Depth (usft)	Inclination (°)	Azimuth (°)	Vertical Depth (usft)	+N/-S (usft)	+E/-W (usft)	Vertical Section (usft)	Dogleg Rate (°/100usft)	Build Rate (°/100usft)	Turn Rate (°/100usft)
11,200.00	89.90	88.55	7,073.63	-415.33	4,352.19	4,364.42	0.00	0.00	0.00
11,300.00	89.90	88.55	7,073.81	-412.80	4,452.16	4,464.23	0.00	0.00	0.00
11,400.00	89.90	88.55	7,073.98	-410.28	4,552.13	4,564.04	0.00	0.00	0.00
11,500.00	89.90	88.55	7,074.16	-407.75	4,652.09	4,663.85	0.00	0.00	0.00
11,600.00	89.90	88.55	7,074.34	-405.22	4,752.06	4,763.65	0.00	0.00	0.00
11,700.00	89.90	88.55	7,074.51	-402.70	4,852.03	4,863.46	0.00	0.00	0.00
11,800.00	89.90	88.55	7,074.69	-400.17	4,952.00	4,963.27	0.00	0.00	0.00
11,900.00	89.90	88.55	7,074.87	-397.64	5,051.97	5,063.08	0.00	0.00	0.00
12,000.00	89.90	88.55	7,075.05	-395.12	5,151.93	5,162.89	0.00	0.00	0.00
12,100.00	89.90	88.55	7,075.22	-392.59	5,251.90	5,262.70	0.00	0.00	0.00
12,200.00	89.90	88.55	7,075.40	-390.06	5,351.87	5,362.51	0.00	0.00	0.00
12,300.00	89.90	88.55	7,075.58	-387.53	5,451.84	5,462.32	0.00	0.00	0.00
12,400.00	89.90	88.55	7,075.75	-385.01	5,551.81	5,562.13	0.00	0.00	0.00
12,500.00	89.90	88.55	7,075.93	-382.48	5,651.77	5,661.94	0.00	0.00	0.00
12,600.00	89.90	88.55	7,076.11	-379.95	5,751.74	5,761.75	0.00	0.00	0.00
12,700.00	89.90	88.55	7,076.28	-377.43	5,851.71	5,861.56	0.00	0.00	0.00
12,800.00	89.90	88.55	7,076.46	-374.90	5,951.68	5,961.37	0.00	0.00	0.00
12,900.00	89.90	88.55	7,076.64	-372.37	6,051.64	6,061.18	0.00	0.00	0.00
13,000.00	89.90	88.55	7,076.81	-369.85	6,151.61	6,160.99	0.00	0.00	0.00
13,100.00	89.90	88.55	7,076.99	-367.32	6,251.58	6,260.80	0.00	0.00	0.00
13,200.00	89.90	88.55	7,077.17	-364.79	6,351.55	6,360.61	0.00	0.00	0.00
13,300.00	89.90	88.55	7,077.34	-362.26	6,451.52	6,460.42	0.00	0.00	0.00
13,400.00	89.90	88.55	7,077.52	-359.74	6,551.48	6,560.23	0.00	0.00	0.00
13,500.00	89.90	88.55	7,077.70	-357.21	6,651.45	6,660.04	0.00	0.00	0.00
13,600.00	89.90	88.55	7,077.87	-354.68	6,751.42	6,759.85	0.00	0.00	0.00
13,700.00	89.90	88.55	7,078.05	-352.16	6,851.39	6,859.66	0.00	0.00	0.00
13,800.00	89.90	88.55	7,078.23	-349.63	6,951.36	6,959.47	0.00	0.00	0.00
13,900.00	89.90	88.55	7,078.40	-347.10	7,051.32	7,059.28	0.00	0.00	0.00
14,000.00	89.90	88.55	7,078.58	-344.58	7,151.29	7,159.09	0.00	0.00	0.00
14,100.00	89.90	88.55	7,078.76	-342.05	7,251.26	7,258.90	0.00	0.00	0.00
14,200.00	89.90	88.55	7,078.93	-339.52	7,351.23	7,358.71	0.00	0.00	0.00
14,300.00	89.90	88.55	7,079.11	-336.99	7,451.20	7,458.52	0.00	0.00	0.00
14,400.00	89.90	88.55	7,079.29	-334.47	7,551.16	7,558.33	0.00	0.00	0.00
14,500.00	89.90	88.55	7,079.47	-331.94	7,651.13	7,658.14	0.00	0.00	0.00
14,600.00	89.90	88.55	7,079.64	-329.41	7,751.10	7,757.95	0.00	0.00	0.00
14,700.00	89.90	88.55	7,079.82	-326.89	7,851.07	7,857.76	0.00	0.00	0.00
14,800.00	89.90	88.55	7,080.00	-324.36	7,951.04	7,957.57	0.00	0.00	0.00
14,900.00	89.90	88.55	7,080.17	-321.83	8,051.00	8,057.38	0.00	0.00	0.00
15,000.00	89.90	88.55	7,080.35	-319.31	8,150.97	8,157.19	0.00	0.00	0.00
15,100.00	89.90	88.55	7,080.53	-316.78	8,250.94	8,257.00	0.00	0.00	0.00
15,200.00	89.90	88.55	7,080.70	-314.25	8,350.91	8,356.81	0.00	0.00	0.00
15,300.00	89.90	88.55	7,080.88	-311.72	8,450.87	8,456.62	0.00	0.00	0.00
15,368.22	89.90	88.55	7,081.00	-310.00	8,519.07	8,524.71	0.00	0.00	0.00
TD Well @ 15368.22ft									

Casing Points					
Measured Depth (usft)	Vertical Depth (usft)	Name		Casing Diameter (")	Hole Diameter (")
1,754.17	1,750.00	9 5/8"		9-5/8	13-1/2
7,449.85	7,067.00	5 1/2"		5-1/2	8-1/2

Plan Annotations					
Measured Depth (usft)	Vertical Depth (usft)	Local Coordinates		Comment	
250.00	250.00	+N/-S (usft)	+E/-W (usft)	Begin Nudge @ 250.00ft	
475.00	474.77	-8.81	-0.62	End Nudge @ 475.00ft	
6,446.23	6,427.59	-476.17	-33.30	KOP @ 6446.23ft: DLS = 9°/100'	
7,449.85	7,067.00	-510.10	603.24	End Build @ 7449.85ft	
15,368.22	7,081.00	-310.00	8,519.07	TD Well @ 15368.22ft	