

SRC ENERGY

**WELD COUNTY (NAD83, TRUE NORTH)
6N-66W-18 LINCOLN STATE 3-18 PAD
LINCOLN STATE 26C-17-M**

Wellbore #1

Plan: Design #1

Standard Planning Report

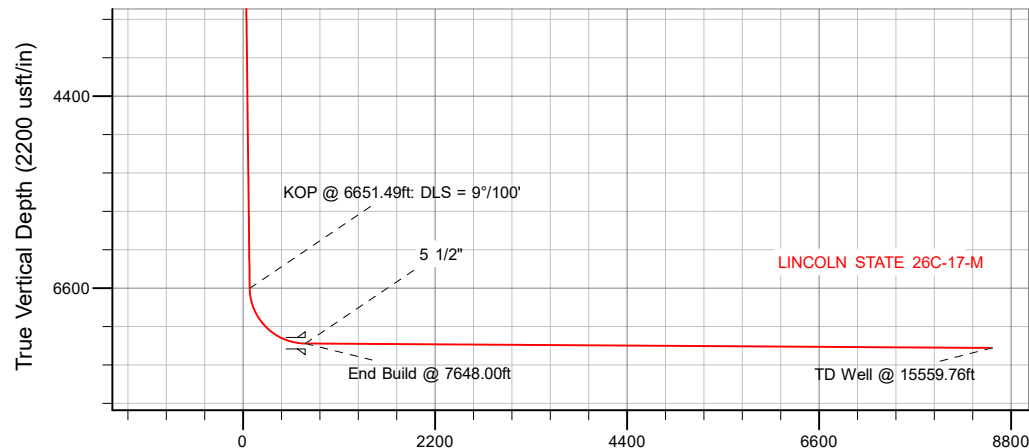
12 December, 2017

Project: WELD COUNTY (NAD83, TRUE NORTH)
Site: 6N-66W-18 LINCOLN STATE 3-18 PAD
Well: LINCOLN STATE 26C-17-M
Wellbore: Wellbore #1
Design: Design #1

SRC ENERGY

CASING DETAILS

TVD	MD	Name	Size
1750.00	1760.55	9 5/8"	9-5/8
7234.00	7648.00	5 1/2"	5-1/2



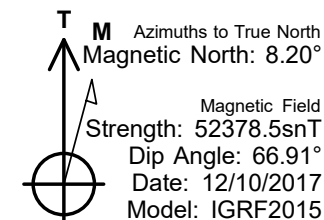
Vertical Section at 82.69° (2200 usft/in)

SECTION DETAILS

Sec	MD	Inc	Azi	TVD	+N/-S	+E/-W	Dleg	TFace	VSec	Target
1	0.00	0.00	0.00	0.00	0.00	0.00	0.00	0.00	0.00	
2	200.00	0.00	0.00	200.00	0.00	0.00	0.00	0.00	0.00	
3	562.50	7.25	358.10	561.53	22.89	-0.76	2.00	358.10	2.16	
4	6651.49	7.25	358.10	6601.84	790.89	-26.24	0.00	0.00	74.59	
5	7648.00	89.63	88.52	7234.00	887.13	604.03	9.00	90.46	711.98	
6	15559.76	89.63	88.52	7285.00	1091.84	8512.97	0.00	0.00	8582.71	LINCOLN STATE 26C-17-M_TD

WELLBORE TARGET DETAILS (LAT/LONG)

Name	TVD	+N/-S	+E/-W	Latitude	Longitude
LINCOLN STATE 26C-17-M_SHL	0.00	0.00	0.00	40.492038	-104.823556
LINCOLN STATE 26C-17-M_TD	7285.00	1091.84	8512.97	40.495031	-104.792947



WELL DETAILS: LINCOLN STATE 26C-17-M

GL = 4851'

RKB = 25' @ 4876.00usft (PD 562)

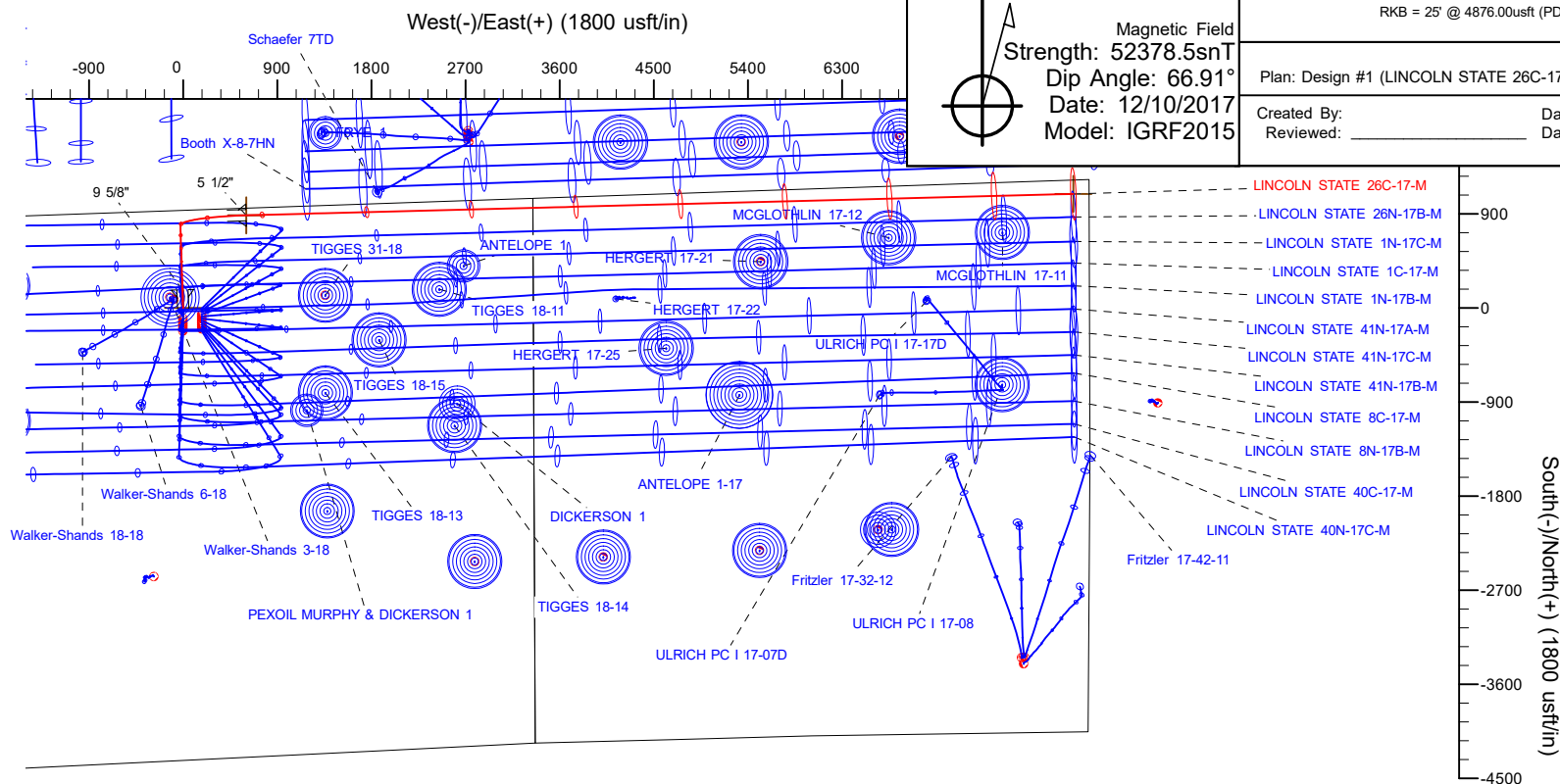
Plan: Design #1 (LINCOLN STATE 26C-17-M/Wellbore #1)

Created By: _____ Date: 12/12/2017
Reviewed: _____ Date: _____

BHL
132' FNL
150' FEL

Heel
67' FNL
2741' FEL

SHL
933' FNL
2451' FWL



Project	WELD COUNTY (NAD83, TRUE NORTH)		
Map System:	US State Plane 1983	System Datum:	Mean Sea Level
Geo Datum:	North American Datum 1983		
Map Zone:	Colorado Northern Zone		

Site		6N-66W-18 LINCOLN STATE 3-18 PAD			
Site Position:		Northing:	1,422,807.42 usft	Latitude:	40.492034
From:	Lat/Long	Easting:	3,188,319.02 usft	Longitude:	-104.822909
Position Uncertainty:	0.00 usft	Slot Radius:	13-3/16 "	Grid Convergence:	0.44 °

Well	LINCOLN STATE 26C-17-M					
Well Position	+N/-S	1.45 usft	Northing:	1,422,807.49 usft	Latitude:	40.492038
	+E/-W	-179.95 usft	Easting:	3,188,139.06 usft	Longitude:	-104.823556
Position Uncertainty		3.28 usft	Wellhead Elevation:		Ground Level:	4,851.00 usft

Wellbore	Wellbore #1				
Magnetics	Model Name	Sample Date	Declination (°)	Dip Angle (°)	Field Strength (nT)
	IGRF2015	12/10/2017	8.20	66.91	52,378.50650900

Design	Design #1			
Audit Notes:				
Version:	Phase:	PLAN	Tie On Depth:	0.00
Vertical Section:	Depth From (TVD) (usft)	+N/-S (usft)	+E/-W (usft)	Direction (°)
	0.00	0.00	0.00	82.69

Plan Survey Tool Program	Date	12/12/2017		
Depth From (usft)	Depth To (usft)	Survey (Wellbore)	Tool Name	Remarks
1	0.00	1,750.00	Design #1 (Wellbore #1)	SRC Energy_ISCWSA REV 2 Fixed:v2:crustal field declinatio
2	1,750.00	15,559.76	Design #1 (Wellbore #1)	SRC Energy_ISCWSA REV 2 Fixed:v2:crustal field declinatio

Plan Sections										
Measured Depth (usft)	Inclination (°)	Azimuth (°)	Vertical Depth (usft)	+N/-S (usft)	+E/-W (usft)	Dogleg Rate (°/100usft)	Build Rate (°/100usft)	Turn Rate (°/100usft)	TFO (°)	Target
0.00	0.00	0.00	0.00	0.00	0.00	0.00	0.00	0.00	0.00	
200.00	0.00	0.00	200.00	0.00	0.00	0.00	0.00	0.00	0.00	
562.50	7.25	358.10	561.53	22.89	-0.76	2.00	2.00	0.00	358.10	
6,651.49	7.25	358.10	6,601.84	790.89	-26.24	0.00	0.00	0.00	0.00	
7,648.00	89.63	88.52	7,234.00	887.13	604.03	9.00	8.27	9.07	90.46	
15,559.76	89.63	88.52	7,285.00	1,091.84	8,512.97	0.00	0.00	0.00	0.00	LINCOLN STATE 26C

Planned Survey

Measured Depth (usft)	Inclination (°)	Azimuth (°)	Vertical Depth (usft)	+N/-S (usft)	+E/-W (usft)	Vertical Section (usft)	Dogleg Rate (°/100usft)	Build Rate (°/100usft)	Turn Rate (°/100usft)
0.00	0.00	0.00	0.00	0.00	0.00	0.00	0.00	0.00	0.00
100.00	0.00	0.00	100.00	0.00	0.00	0.00	0.00	0.00	0.00
200.00	0.00	0.00	200.00	0.00	0.00	0.00	0.00	0.00	0.00
Begin Nudge @ 200.00ft									
300.00	2.00	358.10	299.98	1.74	-0.06	0.16	2.00	2.00	0.00
400.00	4.00	358.10	399.84	6.97	-0.23	0.66	2.00	2.00	0.00
500.00	6.00	358.10	499.45	15.68	-0.52	1.48	2.00	2.00	0.00
562.50	7.25	358.10	561.53	22.89	-0.76	2.16	2.00	2.00	0.00
End Nudge @ 562.50ft									
600.00	7.25	358.10	598.73	27.62	-0.92	2.60	0.00	0.00	0.00
700.00	7.25	358.10	697.93	40.23	-1.33	3.79	0.00	0.00	0.00
800.00	7.25	358.10	797.13	52.85	-1.75	4.98	0.00	0.00	0.00
900.00	7.25	358.10	896.34	65.46	-2.17	6.17	0.00	0.00	0.00
1,000.00	7.25	358.10	995.54	78.07	-2.59	7.36	0.00	0.00	0.00
1,100.00	7.25	358.10	1,094.74	90.69	-3.01	8.55	0.00	0.00	0.00
1,200.00	7.25	358.10	1,193.94	103.30	-3.43	9.74	0.00	0.00	0.00
1,300.00	7.25	358.10	1,293.14	115.91	-3.85	10.93	0.00	0.00	0.00
1,400.00	7.25	358.10	1,392.34	128.53	-4.26	12.12	0.00	0.00	0.00
1,500.00	7.25	358.10	1,491.54	141.14	-4.68	13.31	0.00	0.00	0.00
1,600.00	7.25	358.10	1,590.74	153.75	-5.10	14.50	0.00	0.00	0.00
1,700.00	7.25	358.10	1,689.94	166.36	-5.52	15.69	0.00	0.00	0.00
1,760.55	7.25	358.10	1,750.00	174.00	-5.77	16.41	0.00	0.00	0.00
9 5/8"									
1,800.00	7.25	358.10	1,789.14	178.98	-5.94	16.88	0.00	0.00	0.00
1,900.00	7.25	358.10	1,888.34	191.59	-6.36	18.07	0.00	0.00	0.00
2,000.00	7.25	358.10	1,987.54	204.20	-6.77	19.26	0.00	0.00	0.00
2,100.00	7.25	358.10	2,086.74	216.82	-7.19	20.45	0.00	0.00	0.00
2,200.00	7.25	358.10	2,185.94	229.43	-7.61	21.64	0.00	0.00	0.00
2,300.00	7.25	358.10	2,285.14	242.04	-8.03	22.83	0.00	0.00	0.00
2,400.00	7.25	358.10	2,384.34	254.65	-8.45	24.02	0.00	0.00	0.00
2,500.00	7.25	358.10	2,483.54	267.27	-8.87	25.21	0.00	0.00	0.00
2,600.00	7.25	358.10	2,582.74	279.88	-9.28	26.40	0.00	0.00	0.00
2,700.00	7.25	358.10	2,681.94	292.49	-9.70	27.59	0.00	0.00	0.00
2,800.00	7.25	358.10	2,781.14	305.11	-10.12	28.77	0.00	0.00	0.00
2,900.00	7.25	358.10	2,880.35	317.72	-10.54	29.96	0.00	0.00	0.00
3,000.00	7.25	358.10	2,979.55	330.33	-10.96	31.15	0.00	0.00	0.00
3,100.00	7.25	358.10	3,078.75	342.95	-11.38	32.34	0.00	0.00	0.00
3,200.00	7.25	358.10	3,177.95	355.56	-11.80	33.53	0.00	0.00	0.00
3,300.00	7.25	358.10	3,277.15	368.17	-12.21	34.72	0.00	0.00	0.00
3,400.00	7.25	358.10	3,376.35	380.78	-12.63	35.91	0.00	0.00	0.00
3,500.00	7.25	358.10	3,475.55	393.40	-13.05	37.10	0.00	0.00	0.00
3,600.00	7.25	358.10	3,574.75	406.01	-13.47	38.29	0.00	0.00	0.00
3,700.00	7.25	358.10	3,673.95	418.62	-13.89	39.48	0.00	0.00	0.00
3,800.00	7.25	358.10	3,773.15	431.24	-14.31	40.67	0.00	0.00	0.00
3,900.00	7.25	358.10	3,872.35	443.85	-14.72	41.86	0.00	0.00	0.00
4,000.00	7.25	358.10	3,971.55	456.46	-15.14	43.05	0.00	0.00	0.00
4,100.00	7.25	358.10	4,070.75	469.07	-15.56	44.24	0.00	0.00	0.00
4,200.00	7.25	358.10	4,169.95	481.69	-15.98	45.43	0.00	0.00	0.00
4,300.00	7.25	358.10	4,269.15	494.30	-16.40	46.62	0.00	0.00	0.00
4,400.00	7.25	358.10	4,368.35	506.91	-16.82	47.81	0.00	0.00	0.00
4,500.00	7.25	358.10	4,467.55	519.53	-17.23	49.00	0.00	0.00	0.00
4,600.00	7.25	358.10	4,566.75	532.14	-17.65	50.19	0.00	0.00	0.00
4,700.00	7.25	358.10	4,665.95	544.75	-18.07	51.38	0.00	0.00	0.00
4,800.00	7.25	358.10	4,765.15	557.37	-18.49	52.57	0.00	0.00	0.00
4,900.00	7.25	358.10	4,864.35	569.98	-18.91	53.75	0.00	0.00	0.00
5,000.00	7.25	358.10	4,963.56	582.59	-19.33	54.94	0.00	0.00	0.00
5,100.00	7.25	358.10	5,062.76	595.20	-19.74	56.13	0.00	0.00	0.00
5,200.00	7.25	358.10	5,161.96	607.82	-20.16	57.32	0.00	0.00	0.00
5,300.00	7.25	358.10	5,261.16	620.43	-20.58	58.51	0.00	0.00	0.00
5,400.00	7.25	358.10	5,360.36	633.04	-21.00	59.70	0.00	0.00	0.00
5,500.00	7.25	358.10	5,459.56	645.66	-21.42	60.89	0.00	0.00	0.00
5,600.00	7.25	358.10	5,558.76	658.27	-21.84	62.08	0.00	0.00	0.00
5,700.00	7.25	358.10	5,657.96	670.88	-22.26	63.27	0.00	0.00	0.00
5,800.00	7.25	358.10	5,757.16	683.50	-22.67	64.46	0.00	0.00	0.00
5,900.00	7.25	358.10	5,856.36	696.11	-23.09	65.65	0.00	0.00	0.00
6,000.00	7.25	358.10	5,955.56	708.72	-23.51	66.84	0.00	0.00	0.00

Planned Survey									
Measured Depth (usft)	Inclination (°)	Azimuth (°)	Vertical Depth (usft)	+N/-S (usft)	+E/-W (usft)	Vertical Section (usft)	Dogleg Rate (°/100usft)	Build Rate (°/100usft)	Turn Rate (°/100usft)
6,100.00	7.25	358.10	6,054.76	721.33	-23.93	68.03	0.00	0.00	0.00
6,200.00	7.25	358.10	6,153.96	733.95	-24.35	69.22	0.00	0.00	0.00
6,300.00	7.25	358.10	6,253.16	746.56	-24.77	70.41	0.00	0.00	0.00
6,400.00	7.25	358.10	6,352.36	759.17	-25.18	71.60	0.00	0.00	0.00
6,500.00	7.25	358.10	6,451.56	771.79	-25.60	72.79	0.00	0.00	0.00
6,600.00	7.25	358.10	6,550.76	784.40	-26.02	73.98	0.00	0.00	0.00
6,651.49	7.25	358.10	6,601.84	790.89	-26.24	74.59	0.00	0.00	0.00
KOP @ 6651.49ft: DLS = 9°/100'									
6,700.00	8.43	29.39	6,649.92	797.05	-24.59	77.00	9.00	2.43	64.51
6,750.00	11.39	49.40	6,699.18	803.46	-19.04	83.32	9.00	5.92	40.01
6,800.00	15.12	60.48	6,747.85	809.89	-9.61	93.49	9.00	7.47	22.16
6,850.00	19.18	67.12	6,795.62	816.30	3.64	107.45	9.00	8.12	13.27
6,900.00	23.40	71.47	6,842.20	822.65	20.63	125.11	9.00	8.43	8.70
6,950.00	27.70	74.54	6,887.30	828.91	41.25	146.36	9.00	8.60	6.15
7,000.00	32.05	76.84	6,930.65	835.03	65.38	171.08	9.00	8.70	4.60
7,050.00	36.44	78.64	6,971.97	840.98	92.87	199.10	9.00	8.77	3.60
7,100.00	40.84	80.10	7,011.02	846.72	123.55	230.26	9.00	8.81	2.92
7,150.00	45.27	81.32	7,047.54	852.21	157.23	264.37	9.00	8.84	2.44
7,200.00	49.70	82.37	7,081.32	857.42	193.71	301.21	9.00	8.87	2.09
7,250.00	54.14	83.29	7,112.16	862.32	232.75	340.56	9.00	8.88	1.84
7,300.00	58.59	84.11	7,139.84	866.88	274.12	382.17	9.00	8.90	1.64
7,350.00	63.04	84.85	7,164.22	871.07	317.56	425.79	9.00	8.91	1.49
7,400.00	67.50	85.54	7,185.13	874.87	362.80	471.15	9.00	8.91	1.38
7,450.00	71.96	86.19	7,202.45	878.24	409.57	517.97	9.00	8.92	1.29
7,500.00	76.42	86.80	7,216.07	881.18	457.58	565.96	9.00	8.92	1.23
7,550.00	80.88	87.39	7,225.91	883.66	506.52	614.82	9.00	8.93	1.18
7,600.00	85.34	87.97	7,231.90	885.66	556.11	664.26	9.00	8.93	1.15
7,648.00	89.63	88.52	7,234.00	887.13	604.03	711.98	9.00	8.93	1.14
End Build @ 7648.00ft - 5 1/2"									
7,700.00	89.63	88.52	7,234.34	888.48	656.01	763.71	0.00	0.00	0.00
7,800.00	89.63	88.52	7,234.98	891.07	755.97	863.19	0.00	0.00	0.00
7,900.00	89.63	88.52	7,235.63	893.65	855.94	962.67	0.00	0.00	0.00
8,000.00	89.63	88.52	7,236.27	896.24	955.90	1,062.15	0.00	0.00	0.00
8,100.00	89.63	88.52	7,236.92	898.83	1,055.87	1,161.63	0.00	0.00	0.00
8,200.00	89.63	88.52	7,237.56	901.42	1,155.83	1,261.11	0.00	0.00	0.00
8,300.00	89.63	88.52	7,238.21	904.00	1,255.80	1,360.60	0.00	0.00	0.00
8,400.00	89.63	88.52	7,238.85	906.59	1,355.76	1,460.08	0.00	0.00	0.00
8,500.00	89.63	88.52	7,239.50	909.18	1,455.73	1,559.56	0.00	0.00	0.00
8,600.00	89.63	88.52	7,240.14	911.77	1,555.69	1,659.04	0.00	0.00	0.00
8,700.00	89.63	88.52	7,240.79	914.35	1,655.65	1,758.52	0.00	0.00	0.00
8,800.00	89.63	88.52	7,241.43	916.94	1,755.62	1,858.00	0.00	0.00	0.00
8,900.00	89.63	88.52	7,242.07	919.53	1,855.58	1,957.48	0.00	0.00	0.00
9,000.00	89.63	88.52	7,242.72	922.11	1,955.55	2,056.97	0.00	0.00	0.00
9,100.00	89.63	88.52	7,243.36	924.70	2,055.51	2,156.45	0.00	0.00	0.00
9,200.00	89.63	88.52	7,244.01	927.29	2,155.48	2,255.93	0.00	0.00	0.00
9,300.00	89.63	88.52	7,244.65	929.88	2,255.44	2,355.41	0.00	0.00	0.00
9,400.00	89.63	88.52	7,245.30	932.46	2,355.41	2,454.89	0.00	0.00	0.00
9,500.00	89.63	88.52	7,245.94	935.05	2,455.37	2,554.37	0.00	0.00	0.00
9,600.00	89.63	88.52	7,246.59	937.64	2,555.33	2,653.85	0.00	0.00	0.00
9,700.00	89.63	88.52	7,247.23	940.23	2,655.30	2,753.34	0.00	0.00	0.00
9,800.00	89.63	88.52	7,247.88	942.81	2,755.26	2,852.82	0.00	0.00	0.00
9,900.00	89.63	88.52	7,248.52	945.40	2,855.23	2,952.30	0.00	0.00	0.00
10,000.00	89.63	88.52	7,249.16	947.99	2,955.19	3,051.78	0.00	0.00	0.00
10,100.00	89.63	88.52	7,249.81	950.58	3,055.16	3,151.26	0.00	0.00	0.00
10,200.00	89.63	88.52	7,250.45	953.16	3,155.12	3,250.74	0.00	0.00	0.00
10,300.00	89.63	88.52	7,251.10	955.75	3,255.09	3,350.22	0.00	0.00	0.00
10,400.00	89.63	88.52	7,251.74	958.34	3,355.05	3,449.71	0.00	0.00	0.00
10,500.00	89.63	88.52	7,252.39	960.93	3,455.01	3,549.19	0.00	0.00	0.00
10,600.00	89.63	88.52	7,253.03	963.51	3,554.98	3,648.67	0.00	0.00	0.00
10,700.00	89.63	88.52	7,253.68	966.10	3,654.94	3,748.15	0.00	0.00	0.00
10,800.00	89.63	88.52	7,254.32	968.69	3,754.91	3,847.63	0.00	0.00	0.00
10,900.00	89.63	88.52	7,254.97	971.28	3,854.87	3,947.11	0.00	0.00	0.00
11,000.00	89.63	88.52	7,255.61	973.86	3,954.84	4,046.59	0.00	0.00	0.00
11,100.00	89.63	88.52	7,256.25	976.45	4,054.80	4,146.08	0.00	0.00	0.00
11,200.00	89.63	88.52	7,256.90	979.04	4,154.77	4,245.56	0.00	0.00	0.00
11,300.00	89.63	88.52	7,257.54	981.62	4,254.73	4,345.04	0.00	0.00	0.00

Planned Survey										
Measured Depth (usft)	Inclination (°)	Azimuth (°)	Vertical Depth (usft)	+N/-S (usft)	+E/-W (usft)	Vertical Section (usft)	Dogleg Rate (°/100usft)	Build Rate (°/100usft)	Turn Rate (°/100usft)	
11,400.00	89.63	88.52	7,258.19	984.21	4,354.69	4,444.52	0.00	0.00	0.00	
11,500.00	89.63	88.52	7,258.83	986.80	4,454.66	4,544.00	0.00	0.00	0.00	
11,600.00	89.63	88.52	7,259.48	989.39	4,554.62	4,643.48	0.00	0.00	0.00	
11,700.00	89.63	88.52	7,260.12	991.97	4,654.59	4,742.96	0.00	0.00	0.00	
11,800.00	89.63	88.52	7,260.77	994.56	4,754.55	4,842.45	0.00	0.00	0.00	
11,900.00	89.63	88.52	7,261.41	997.15	4,854.52	4,941.93	0.00	0.00	0.00	
12,000.00	89.63	88.52	7,262.06	999.74	4,954.48	5,041.41	0.00	0.00	0.00	
12,100.00	89.63	88.52	7,262.70	1,002.32	5,054.45	5,140.89	0.00	0.00	0.00	
12,200.00	89.63	88.52	7,263.34	1,004.91	5,154.41	5,240.37	0.00	0.00	0.00	
12,300.00	89.63	88.52	7,263.99	1,007.50	5,254.37	5,339.85	0.00	0.00	0.00	
12,400.00	89.63	88.52	7,264.63	1,010.09	5,354.34	5,439.33	0.00	0.00	0.00	
12,500.00	89.63	88.52	7,265.28	1,012.67	5,454.30	5,538.81	0.00	0.00	0.00	
12,600.00	89.63	88.52	7,265.92	1,015.26	5,554.27	5,638.30	0.00	0.00	0.00	
12,700.00	89.63	88.52	7,266.57	1,017.85	5,654.23	5,737.78	0.00	0.00	0.00	
12,800.00	89.63	88.52	7,267.21	1,020.44	5,754.20	5,837.26	0.00	0.00	0.00	
12,900.00	89.63	88.52	7,267.86	1,023.02	5,854.16	5,936.74	0.00	0.00	0.00	
13,000.00	89.63	88.52	7,268.50	1,025.61	5,954.13	6,036.22	0.00	0.00	0.00	
13,100.00	89.63	88.52	7,269.15	1,028.20	6,054.09	6,135.70	0.00	0.00	0.00	
13,200.00	89.63	88.52	7,269.79	1,030.79	6,154.05	6,235.18	0.00	0.00	0.00	
13,300.00	89.63	88.52	7,270.43	1,033.37	6,254.02	6,334.67	0.00	0.00	0.00	
13,400.00	89.63	88.52	7,271.08	1,035.96	6,353.98	6,434.15	0.00	0.00	0.00	
13,500.00	89.63	88.52	7,271.72	1,038.55	6,453.95	6,533.63	0.00	0.00	0.00	
13,600.00	89.63	88.52	7,272.37	1,041.14	6,553.91	6,633.11	0.00	0.00	0.00	
13,700.00	89.63	88.52	7,273.01	1,043.72	6,653.88	6,732.59	0.00	0.00	0.00	
13,800.00	89.63	88.52	7,273.66	1,046.31	6,753.84	6,832.07	0.00	0.00	0.00	
13,900.00	89.63	88.52	7,274.30	1,048.90	6,853.81	6,931.55	0.00	0.00	0.00	
14,000.00	89.63	88.52	7,274.95	1,051.48	6,953.77	7,031.04	0.00	0.00	0.00	
14,100.00	89.63	88.52	7,275.59	1,054.07	7,053.73	7,130.52	0.00	0.00	0.00	
14,200.00	89.63	88.52	7,276.24	1,056.66	7,153.70	7,230.00	0.00	0.00	0.00	
14,300.00	89.63	88.52	7,276.88	1,059.25	7,253.66	7,329.48	0.00	0.00	0.00	
14,400.00	89.63	88.52	7,277.52	1,061.83	7,353.63	7,428.96	0.00	0.00	0.00	
14,500.00	89.63	88.52	7,278.17	1,064.42	7,453.59	7,528.44	0.00	0.00	0.00	
14,600.00	89.63	88.52	7,278.81	1,067.01	7,553.56	7,627.92	0.00	0.00	0.00	
14,700.00	89.63	88.52	7,279.46	1,069.60	7,653.52	7,727.41	0.00	0.00	0.00	
14,800.00	89.63	88.52	7,280.10	1,072.18	7,753.49	7,826.89	0.00	0.00	0.00	
14,900.00	89.63	88.52	7,280.75	1,074.77	7,853.45	7,926.37	0.00	0.00	0.00	
15,000.00	89.63	88.52	7,281.39	1,077.36	7,953.41	8,025.85	0.00	0.00	0.00	
15,100.00	89.63	88.52	7,282.04	1,079.95	8,053.38	8,125.33	0.00	0.00	0.00	
15,200.00	89.63	88.52	7,282.68	1,082.53	8,153.34	8,224.81	0.00	0.00	0.00	
15,300.00	89.63	88.52	7,283.33	1,085.12	8,253.31	8,324.29	0.00	0.00	0.00	
15,400.00	89.63	88.52	7,283.97	1,087.71	8,353.27	8,423.78	0.00	0.00	0.00	
15,500.00	89.63	88.52	7,284.61	1,090.30	8,453.24	8,523.26	0.00	0.00	0.00	
15,559.76	89.63	88.52	7,285.00	1,091.84	8,512.97	8,582.71	0.00	0.00	0.00	
TD Well @ 15559.76ft										

Casing Points						
Measured Depth (usft)	Vertical Depth (usft)	Name			Casing Diameter (")	Hole Diameter (")
1,760.55	1,750.00	9 5/8"			9-5/8	13-1/2
7,648.00	7,234.00	5 1/2"			5-1/2	8-1/2

Plan Annotations					
Measured Depth (usft)	Vertical Depth (usft)	Local Coordinates		Comment	
200.00	200.00	+N/-S (usft)	+E/-W (usft)	Begin Nudge @ 200.00ft	
562.50	561.53	22.89	-0.76	End Nudge @ 562.50ft	
6,651.49	6,601.84	790.89	-26.24	KOP @ 6651.49ft: DLS = 9°/100'	
7,648.00	7,234.00	887.13	604.03	End Build @ 7648.00ft	
15,559.76	7,285.00	1,091.84	8,512.97	TD Well @ 15559.76ft	