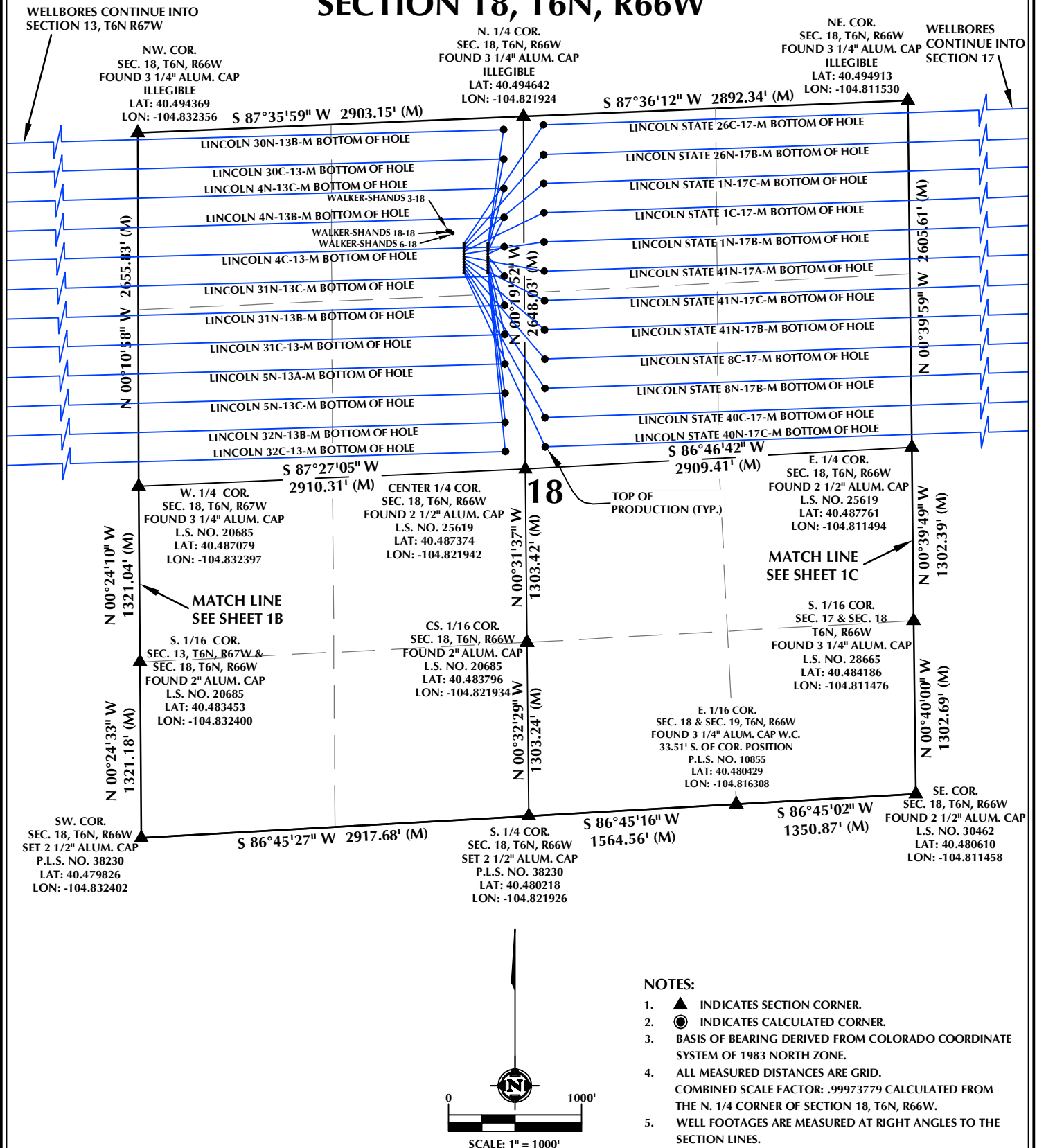
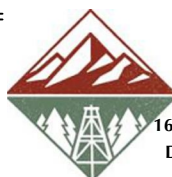


SECTION 18, T6N, R66W



WELL PAD - LINCOLN STATE 3-18 PAD

MULTI-WELL PLAN
LINCOLN 30N-13B-M, LINCOLN 30C-13-M, LINCOLN 4N-13C-M, LINCOLN 4N-13B-M, LINCOLN 4C-13-M, LINCOLN 31N-13C-M, LINCOLN 31N-13B-M, LINCOLN 31C-13-M, LINCOLN 5N-13A-M, LINCOLN 5N-13C-M, LINCOLN 32N-13B-M, LINCOLN 32C-13-M, LINCOLN STATE 26C-17-M, LINCOLN STATE 26N-17B-M, LINCOLN STATE 1N-17C-M, LINCOLN STATE 1C-17-M, LINCOLN STATE 1N-17B-M, LINCOLN STATE 41N-17A-M, LINCOLN STATE 41N-17C-M, LINCOLN STATE 41N-17B-M, LINCOLN STATE 8C-17-M, LINCOLN STATE 8N-17B-M, LINCOLN STATE 40C-17-M & LINCOLN STATE 40N-17C-M
LOCATED IN SECTIONS 17 & 18, T6N, R66W, 6TH P.M.
& LOCATED IN SECTION 13, T6N, R66W, 6TH P.M.
WELD COUNTY, COLORADO



SRC ENERGY
1675 Broadway, Suite 2600
Denver, Colorado 80202



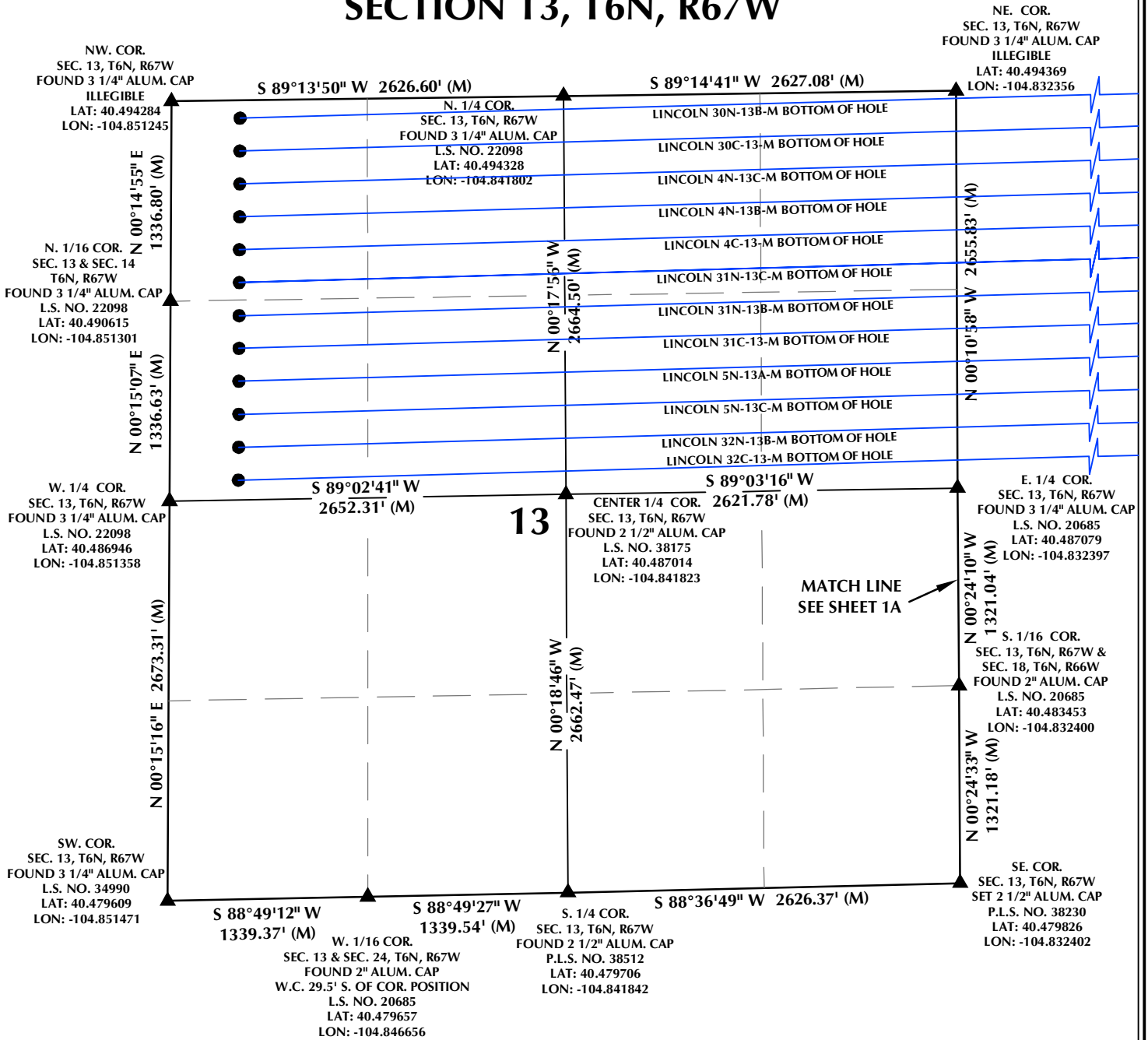
CONSULTING, LLC

SHERIDAN OFFICE
1095 Saberton Avenue
Sheridan, Wyoming 82801
Phone 307-674-0609

LOVELAND OFFICE
1635 Foxtrail Drive, Suite 204
Loveland, Colorado 80538
Phone 970-776-4331

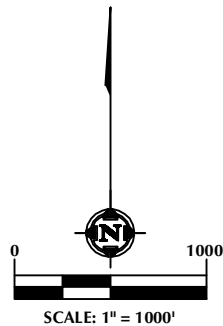
DRAFTED BY:	LMO	CHECKED BY:	JRS	SHEET NO:
DATE DRAFTED:	11/17/17	DATE SURVEYED:	6/22/17	1A
REVISED:	11/30/17	FILE NAME:	17-86	1A OF 3

SECTION 13, T6N, R67W



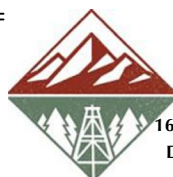
NOTES:

- ▲ INDICATES SECTION CORNER.
- INDICATES CALCULATED CORNER.
- BASIS OF BEARING DERIVED FROM COLORADO COORDINATE SYSTEM OF 1983 NORTH ZONE.
- ALL MEASURED DISTANCES ARE GRID. COMBINED SCALE FACTOR: .99973779 CALCULATED FROM THE N. 1/4 CORNER OF SECTION 18, T6N, R66W.
- WELL FOOTAGES ARE MEASURED AT RIGHT ANGLES TO THE SECTION LINES.

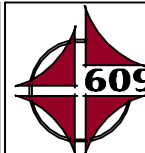


WELL PAD - LINCOLN STATE 3-18 PAD

MULTI-WELL PLAN
LINCOLN 30N-13B-M, LINCOLN 30C-13-M, LINCOLN 4N-13C-M, LINCOLN 4N-13B-M, LINCOLN 4C-13-M, LINCOLN 31N-13C-M, LINCOLN 31N-13B-M, LINCOLN 31C-13-M, LINCOLN 5N-13A-M, LINCOLN 5N-13C-M, LINCOLN 32N-13B-M, LINCOLN 32C-13-M, LINCOLN STATE 26C-17-M, LINCOLN STATE 26N-17B-M, LINCOLN STATE 1N-17C-M, LINCOLN STATE 1C-17-M, LINCOLN STATE 1N-17B-M, LINCOLN STATE 41N-17A-M, LINCOLN STATE 41N-17C-M, LINCOLN STATE 41N-17B-M, LINCOLN STATE 8C-17-M, LINCOLN STATE 8N-17B-M, LINCOLN STATE 40C-17-M & LINCOLN STATE 40N-17C-M LOCATED IN SECTIONS 17 & 18, T6N, R66W, 6TH P.M. & LOCATED IN SECTION 13, T6N, R67W, 6TH P.M. WELD COUNTY, COLORADO



SRC ENERGY
1675 Broadway, Suite 2600
Denver, Colorado 80202



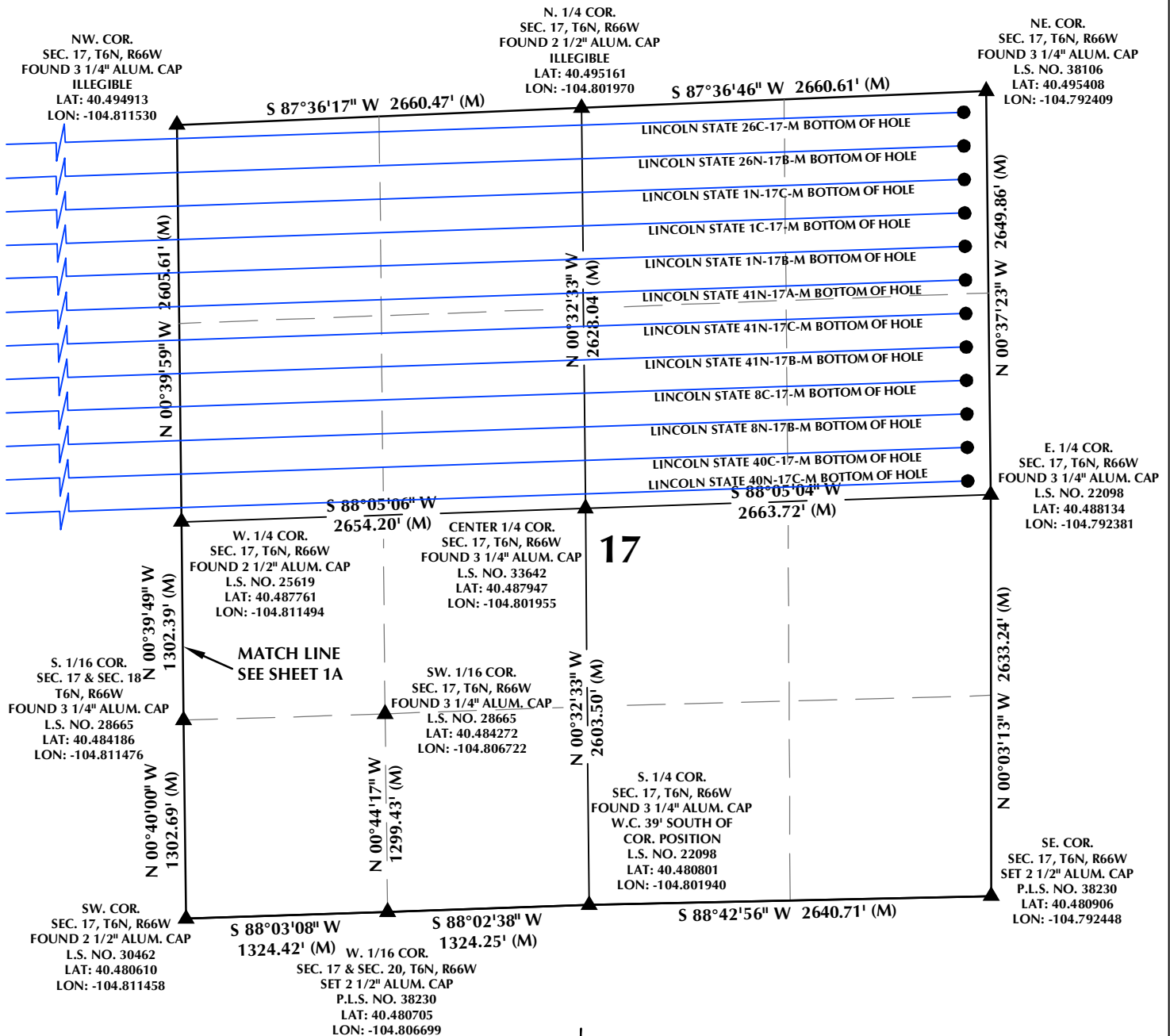
CONSULTING, LLC

SHERIDAN OFFICE
1095 Saberton Avenue
Sheridan, Wyoming 82801
Phone 307-674-0609

LOVELAND OFFICE
1635 Foxtrail Drive, Suite 204
Loveland, Colorado 80538
Phone 970-776-4331

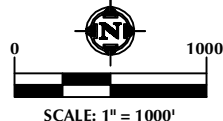
DRAFTED BY:	LMO	CHECKED BY:	JRS	SHEET NO:
DATE DRAFTED:	11/17/17	DATE SURVEYED:	6/22/17	1B
REVISED:		FILE NAME:	17-86	1B OF 3

SECTION 17, T6N, R66W



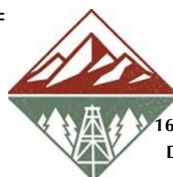
NOTES:

- ▲ INDICATES SECTION CORNER.
- INDICATES CALCULATED CORNER.
- BASIS OF BEARING DERIVED FROM COLORADO COORDINATE SYSTEM OF 1983 NORTH ZONE.
- ALL MEASURED DISTANCES ARE GRID. COMBINED SCALE FACTOR: .99973779 CALCULATED FROM THE N. 1/4 CORNER OF SECTION 18, T6N, R66W.
- WELL FOOTAGES ARE MEASURED AT RIGHT ANGLES TO THE SECTION LINES.

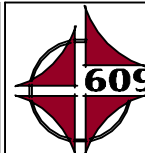


WELL PAD - LINCOLN STATE 3-18 PAD

MULTI-WELL PLAN
LINCOLN 30N-13B-M, LINCOLN 30C-13-M, LINCOLN 4N-13C-M, LINCOLN 4N-13B-M, LINCOLN 4C-13-M, LINCOLN 31N-13C-M, LINCOLN 31N-13B-M, LINCOLN 31C-13-M, LINCOLN 5N-13A-M, LINCOLN 5N-13C-M, LINCOLN 32N-13B-M, LINCOLN 32C-13-M, LINCOLN STATE 26C-17-M, LINCOLN STATE 26N-17B-M, LINCOLN STATE 1N-17C-M, LINCOLN STATE 1C-17-M, LINCOLN STATE 1N-17B-M, LINCOLN STATE 41N-17A-M, LINCOLN STATE 41N-17C-M, LINCOLN STATE 41N-17B-M, LINCOLN STATE 8C-17-M, LINCOLN STATE 8N-17B-M, LINCOLN STATE 40C-17-M & LINCOLN STATE 40N-17C-M
LOCATED IN SECTIONS 17 & 18, T6N, R66W, 6TH P.M.
& LOCATED IN SECTION 13, T6N, R67W, 6TH P.M.
WELD COUNTY, COLORADO



SRC ENERGY
1675 Broadway, Suite 2600
Denver, Colorado 80202



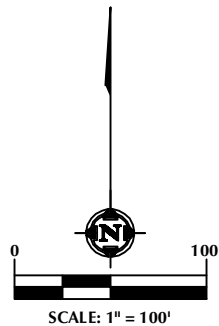
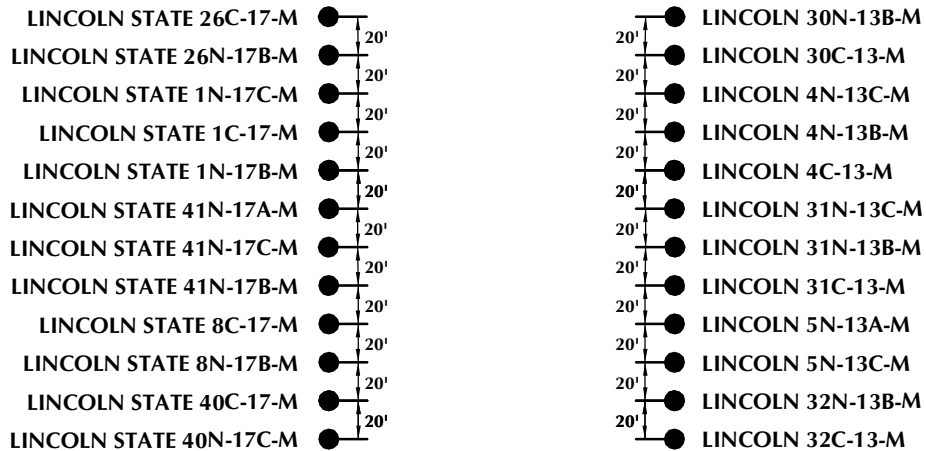
CONSULTING, LLC

SHERIDAN OFFICE
1095 Saberton Avenue
Sheridan, Wyoming 82801
Phone 307-674-0609

LOVELAND OFFICE
1635 Foxtrail Drive, Suite 204
Loveland, Colorado 80538
Phone 970-776-4331

DRAFTED BY:	LMO	CHECKED BY:	JRS	SHEET NO:
DATE DRAFTED:	11/17/17	DATE SURVEYED:	6/22/17	1C
REVISED:		FILE NAME:	17-86	1C OF 3

LINCOLN STATE 3-18 PAD

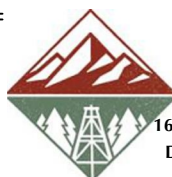


NOTES:

- ▲ INDICATES SECTION CORNER.
- INDICATES CALCULATED CORNER.
- BASIS OF BEARING DERIVED FROM COLORADO COORDINATE SYSTEM OF 1983 NORTH ZONE.
- ALL MEASURED DISTANCES ARE GRID.
COMBINED SCALE FACTOR: .99973779 CALCULATED FROM THE N. 1/4 CORNER OF SECTION 18, T6N, R66W.
- WELL FOOTAGES ARE MEASURED AT RIGHT ANGLES TO THE SECTION LINES.

WELL PAD - LINCOLN STATE 3-18 PAD

MULTI-WELL PLAN
LINCOLN 30N-13B-M, LINCOLN 30C-13-M, LINCOLN 4N-13C-M, LINCOLN 4N-13B-M,
LINCOLN 4C-13-M, LINCOLN 31N-13C-M, LINCOLN 31N-13B-M, LINCOLN 31C-13-M,
LINCOLN 5N-13A-M, LINCOLN 5N-13C-M, LINCOLN 32N-13B-M, LINCOLN 32C-13-M,
LINCOLN STATE 26C-17-M, LINCOLN STATE 26N-17B-M, LINCOLN STATE 1N-17C-M,
LINCOLN STATE 1C-17-M, LINCOLN STATE 1N-17B-M, LINCOLN STATE 41N-17A-M,
LINCOLN STATE 41N-17C-M, LINCOLN STATE 41N-17B-M, LINCOLN STATE 8C-17-M,
LINCOLN STATE 8N-17B-M, LINCOLN STATE 40C-17-M & LINCOLN STATE 40N-17C-M
LOCATED IN SECTIONS 17 & 18, T6N, R66W, 6TH P.M.
& LOCATED IN SECTION 13, T6N, R67W, 6TH P.M.
WELD COUNTY, COLORADO



SRC ENERGY
1675 Broadway, Suite 2600
Denver, Colorado 80202



CONSULTING, LLC

SHERIDAN OFFICE
1095 Saberton Avenue
Sheridan, Wyoming 82801
Phone 307-674-0609

LOVELAND OFFICE
1635 Foxtrail Drive, Suite 204
Loveland, Colorado 80538
Phone 970-776-4331

DRAFTED BY:	LMO	CHECKED BY:	JRS	SHEET NO:
DATE DRAFTED:	11/17/17	DATE SURVEYED:	6/22/17	2
REVISED:	11/30/17	FILE NAME:	17-86	2 OF 3

LINCOLN STATE 3-18 PAD

WELL NOTES:

LINCOLN 30N-13B-M

SURFACE:

940' FNL & 2631' FWL

LATITUDE= 40.492034°

LONGITUDE= -104.822909°

TOP OF PRODUCTION:

90' FNL & 2751' FWL

LATITUDE= 40.494381°

LONGITUDE= -104.822464°

BOTTOM HOLE:

119' FNL & 460' FWL

LATITUDE= 40.493965°

LONGITUDE= -104.849596°

LINCOLN 30C-13-M

SURFACE:

960' FNL & 2631' FWL

LATITUDE= 40.491980°

LONGITUDE= -104.822909°

TOP OF PRODUCTION:

311' FNL & 2752' FWL

LATITUDE= 40.493774°

LONGITUDE= -104.822465°

BOTTOM HOLE:

338' FNL & 460' FWL

LATITUDE= 40.493364°

LONGITUDE= -104.849605°

LINCOLN 4N-13C-M

SURFACE:

980' FNL & 2631' FWL

LATITUDE= 40.491925°

LONGITUDE= -104.822910°

TOP OF PRODUCTION:

531' FNL & 2752' FWL

LATITUDE= 40.493170°

LONGITUDE= -104.822467°

BOTTOM HOLE:

558' FNL & 460' FWL

LATITUDE= 40.492760°

LONGITUDE= -104.849615°

LINCOLN 4N-13B-M

SURFACE:

1000' FNL & 2631' FWL

LATITUDE= 40.491870°

LONGITUDE= -104.822911°

TOP OF PRODUCTION:

750' FNL & 2753' FWL

LATITUDE= 40.492568°

LONGITUDE= -104.822468°

BOTTOM HOLE:

779' FNL & 460' FWL

LATITUDE= 40.492153°

LONGITUDE= -104.849624°

LINCOLN 4C-13-M

SURFACE:

1020' FNL & 2631' FWL

LATITUDE= 40.491815°

LONGITUDE= -104.822911°

TOP OF PRODUCTION:

970' FNL & 2754' FWL

LATITUDE= 40.491964°

LONGITUDE= -104.822470°

BOTTOM HOLE:

999' FNL & 460' FWL

LATITUDE= 40.491549°

LONGITUDE= -104.849633°

LINCOLN 31N-13C-M

SURFACE:

1040' FNL & 2631' FWL

LATITUDE= 40.491760°

LONGITUDE= -104.822912°

TOP OF PRODUCTION:

1190' FNL & 2754' FWL

LATITUDE= 40.491360°

LONGITUDE= -104.822471°

BOTTOM HOLE:

1218' FNL & 460' FWL

LATITUDE= 40.490948°

LONGITUDE= -104.849642°

LINCOLN 31N-13B-M

SURFACE:

1060' FNL & 2631' FWL

LATITUDE= 40.491705°

LONGITUDE= -104.822912°

TOP OF PRODUCTION:

1410' FNL & 2755' FWL

LATITUDE= 40.490755°

LONGITUDE= -104.822473°

BOTTOM HOLE:

1440' FNL & 460' FWL

LATITUDE= 40.490339°

LONGITUDE= -104.849652°

LINCOLN 31C-13-M

SURFACE:

1080' FNL & 2631' FWL

LATITUDE= 40.491650°

LONGITUDE= -104.822913°

TOP OF PRODUCTION:

1629' FNL & 2755' FWL

LATITUDE= 40.490154°

LONGITUDE= -104.822474°

BOTTOM HOLE:

1658' FNL & 460' FWL

LATITUDE= 40.489740°

LONGITUDE= -104.849661°

LINCOLN 5N-13A-M

SURFACE:

1100' FNL & 2631' FWL

LATITUDE= 40.491595°

LONGITUDE= -104.822913°

TOP OF PRODUCTION:

1850' FNL & 2756' FWL

LATITUDE= 40.489547°

LONGITUDE= -104.822476°

BOTTOM HOLE:

1878' FNL & 460' FWL

LATITUDE= 40.489136°

LONGITUDE= -104.849670°

LINCOLN 5N-13C-M

SURFACE:

1120' FNL & 2631' FWL

LATITUDE= 40.491540°

LONGITUDE= -104.822914°

TOP OF PRODUCTION:

2070' FNL & 2756' FWL

LATITUDE= 40.488942°

LONGITUDE= -104.822477°

BOTTOM HOLE:

2099' FNL & 460' FWL

LATITUDE= 40.488530°

LONGITUDE= -104.849680°

LINCOLN 32N-13B-M

SURFACE:

1140' FNL & 2631' FWL

LATITUDE= 40.491486°

LONGITUDE= -104.822914°

TOP OF PRODUCTION:

2290' FNL & 2757' FWL

LATITUDE= 40.488338°

LONGITUDE= -104.822478°

BOTTOM HOLE:

2319' FNL & 460' FWL

LATITUDE= 40.487926°

LONGITUDE= -104.849689°

LINCOLN 32C-13-M

SURFACE:

1160' FNL & 2631' FWL

LATITUDE= 40.491431°

LONGITUDE= -104.822915°

TOP OF PRODUCTION:

2508' FNL & 2757' FWL

LATITUDE= 40.487739°

LONGITUDE= -104.822480°

BOTTOM HOLE:

2539' FNL & 460' FWL

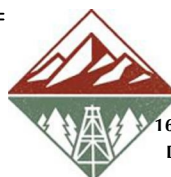
LATITUDE= 40.487322°

LONGITUDE= -104.849698°

WELL PAD - LINCOLN STATE 3-18 PAD

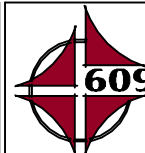
MULTI-WELL PLAN

LINCOLN 30N-13B-M, LINCOLN 30C-13-M, LINCOLN 4N-13C-M, LINCOLN 4N-13B-M, LINCOLN 4C-13-M, LINCOLN 31N-13C-M, LINCOLN 31N-13B-M, LINCOLN 31C-13-M, LINCOLN 5N-13A-M, LINCOLN 5N-13C-M, LINCOLN 32N-13B-M, LINCOLN 32C-13-M, LINCOLN STATE 26C-17-M, LINCOLN STATE 26N-17B-M, LINCOLN STATE 1N-17C-M, LINCOLN STATE 1C-17-M, LINCOLN STATE 1N-17B-M, LINCOLN STATE 41N-17A-M, LINCOLN STATE 41N-17C-M, LINCOLN STATE 41N-17B-M, LINCOLN STATE 8C-17-M, LINCOLN STATE 8N-17B-M, LINCOLN STATE 40C-17-M & LINCOLN STATE 40N-17C-M
LOCATED IN SECTIONS 17 & 18, T6N, R67W, 6TH P.M.
& LOCATED IN SECTION 13, T6N, R67W, 6TH P.M.
WELD COUNTY, COLORADO



SRC ENERGY

1675 Broadway, Suite 2600
Denver, Colorado 80202



CONSULTING, LLC

SHERIDAN OFFICE
1095 Saberton Avenue
Sheridan, Wyoming 82801
Phone 307-674-0609

LOVELAND OFFICE
1635 Foxtrail Drive, Suite 204
Loveland, Colorado 80538
Phone 970-776-4331

DRAFTED BY: LMO

CHECKED BY: JRS

SHEET NO:

DATE DRAFTED: 11/17/17

DATE SURVEYED: 6/22/17

3A

REVISED: 11/30/17

FILE NAME: 17-86

3A OF 3

LINCOLN STATE 3-18 PAD

WELL NOTES:

LINCOLN STATE 26C-17-M

SURFACE:

933' FNL & 2451' FWL
LATITUDE= 40.492038°
LONGITUDE= -104.823556°

TOP OF PRODUCTION:

67' FNL & 2741' FEL
LATITUDE= 40.494472°
LONGITUDE= -104.821385°

BOTTOM HOLE:

132' FNL & 150' FEL
LATITUDE= 40.495031°
LONGITUDE= -104.792947°

LINCOLN STATE 26N-17B-M

SURFACE:

953' FNL & 2451' FWL
LATITUDE= 40.491983°
LONGITUDE= -104.823557°

TOP OF PRODUCTION:

291' FNL & 2743' FEL
LATITUDE= 40.493857°
LONGITUDE= -104.821386°

BOTTOM HOLE:

354' FNL & 150' FEL
LATITUDE= 40.494422°
LONGITUDE= -104.792945°

LINCOLN STATE 1N-17C-M

SURFACE:

973' FNL & 2451' FWL
LATITUDE= 40.491928°
LONGITUDE= -104.823557°

TOP OF PRODUCTION:

507' FNL & 2744' FEL
LATITUDE= 40.493264°
LONGITUDE= -104.821388°

BOTTOM HOLE:

573' FNL & 150' FEL
LATITUDE= 40.493820°
LONGITUDE= -104.792942°

LINCOLN STATE 1C-17-M

SURFACE:

992' FNL & 2451' FWL
LATITUDE= 40.491874°
LONGITUDE= -104.823558°

TOP OF PRODUCTION:

727' FNL & 2745' FEL
LATITUDE= 40.492659°
LONGITUDE= -104.821389°

BOTTOM HOLE:

794' FNL & 150' FEL
LATITUDE= 40.493213°
LONGITUDE= -104.792940°

LINCOLN STATE 1N-17B-M

SURFACE:

1012' FNL & 2451' FWL
LATITUDE= 40.491819°
LONGITUDE= -104.823558°

TOP OF PRODUCTION:

947' FNL & 2747' FEL
LATITUDE= 40.492055°
LONGITUDE= -104.821391°

BOTTOM HOLE:

1012' FNL & 150' FEL
LATITUDE= 40.492615°
LONGITUDE= -104.792938°

LINCOLN STATE 41N-17A-M

SURFACE:

1032' FNL & 2451' FWL
LATITUDE= 40.491764°
LONGITUDE= -104.823559°

TOP OF PRODUCTION:

1166' FNL & 2748' FEL
LATITUDE= 40.491454°
LONGITUDE= -104.821392°

BOTTOM HOLE:

1233' FNL & 150' FEL
LATITUDE= 40.492008°
LONGITUDE= -104.792935°

LINCOLN STATE 41N-17C-M

SURFACE:

1052' FNL & 2451' FWL
LATITUDE= 40.491709°
LONGITUDE= -104.823559°

TOP OF PRODUCTION:

1387' FNL & 2749' FEL
LATITUDE= 40.490847°
LONGITUDE= -104.821394°

BOTTOM HOLE:

1453' FNL & 150' FEL
LATITUDE= 40.491404°
LONGITUDE= -104.792933°

LINCOLN STATE 41N-17B-M

SURFACE:

1072' FNL & 2451' FWL
LATITUDE= 40.491654°
LONGITUDE= -104.823560°

TOP OF PRODUCTION:

1607' FNL & 2750' FEL
LATITUDE= 40.490242°
LONGITUDE= -104.821395°

BOTTOM HOLE:

1673' FNL & 150' FEL
LATITUDE= 40.490799°
LONGITUDE= -104.792931°

LINCOLN STATE 8C-17-M

SURFACE:

1092' FNL & 2451' FWL
LATITUDE= 40.491599°
LONGITUDE= -104.823560°

TOP OF PRODUCTION:

1827' FNL & 2752' FEL
LATITUDE= 40.489638°
LONGITUDE= -104.821397°

BOTTOM HOLE:

1892' FNL & 150' FEL
LATITUDE= 40.490198°
LONGITUDE= -104.792928°

LINCOLN STATE 8N-17B-M

SURFACE:

1112' FNL & 2451' FWL
LATITUDE= 40.491544°
LONGITUDE= -104.823561°

TOP OF PRODUCTION:

2046' FNL & 2753' FEL
LATITUDE= 40.489037°
LONGITUDE= -104.821398°

BOTTOM HOLE:

2113' FNL & 150' FEL
LATITUDE= 40.489591°
LONGITUDE= -104.792926°

LINCOLN STATE 40C-17-M

SURFACE:

1132' FNL & 2451' FWL
LATITUDE= 40.491489°
LONGITUDE= -104.823562°

TOP OF PRODUCTION:

2266' FNL & 2754' FEL
LATITUDE= 40.488432°
LONGITUDE= -104.821400°

BOTTOM HOLE:

2332' FNL & 150' FEL
LATITUDE= 40.488990°
LONGITUDE= -104.792924°

LINCOLN STATE 40N-17C-M

SURFACE:

1152' FNL & 2451' FWL
LATITUDE= 40.491434°
LONGITUDE= -104.823562°

TOP OF PRODUCTION:

2486' FNL & 2756' FEL
LATITUDE= 40.487828°
LONGITUDE= -104.821401°

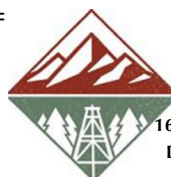
BOTTOM HOLE:

2552' FNL & 150' FEL
LATITUDE= 40.488385°
LONGITUDE= -104.792922°

WELL PAD - LINCOLN STATE 3-18 PAD

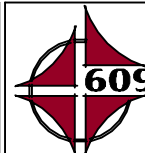
MULTI-WELL PLAN

LINCOLN 30N-13B-M, LINCOLN 30C-13-M, LINCOLN 4N-13C-M, LINCOLN 4N-13B-M, LINCOLN 4C-13-M, LINCOLN 31N-13C-M, LINCOLN 31N-13B-M, LINCOLN 31C-13-M, LINCOLN 5N-13A-M, LINCOLN 5N-13C-M, LINCOLN 32N-13B-M, LINCOLN 32C-13-M, LINCOLN STATE 26C-17-M, LINCOLN STATE 26N-17B-M, LINCOLN STATE 1N-17C-M, LINCOLN STATE 1C-17-M, LINCOLN STATE 1N-17B-M, LINCOLN STATE 41N-17A-M, LINCOLN STATE 41N-17C-M, LINCOLN STATE 41N-17B-M, LINCOLN STATE 8C-17-M, LINCOLN STATE 8N-17B-M, LINCOLN STATE 40C-17-M & LINCOLN STATE 40N-17C-M
LOCATED IN SECTIONS 17 & 18, T6N, R66W, 6TH P.M.
& LOCATED IN SECTION 13, T6N, R67W, 6TH P.M.
WELD COUNTY, COLORADO



SRC ENERGY

1675 Broadway, Suite 2600
Denver, Colorado 80202



CONSULTING, LLC

SHERIDAN OFFICE
1095 Saberton Avenue
Sheridan, Wyoming 82801
Phone 307-674-0609

LOVELAND OFFICE
1635 Foxtrail Drive, Suite 204
Loveland, Colorado 80538
Phone 970-776-4331

DRAFTED BY:	LMO	CHECKED BY:	JRS	SHEET NO:
DATE DRAFTED:	11/17/17	DATE SURVEYED:	6/22/17	3B
REVISED:	11/30/17	FILE NAME:	17-86	3B OF 3