



January 19, 2018

Mr. Matt Lepore, Director
Colorado Oil and Gas Conservation Commission
1120 Lincoln Street, Suite 801
Denver, CO 80203

RE: COGCC Rule 318A.e.: Proposed Wellbore Spacing Unit

Lincoln State 1N-17C-M

API: n/a

T6N-R66W 16: NW/4NW/4, 17: N/2N/2, 18: N/2NE/4, NE/4NW/4
320.00 Acres

Dear Director Lepore,

SRC Energy Inc. ("SRC Energy") is planning to drill the above referenced well in accordance with the provisions set out in COGCC Rule 318A.e. SRC Energy's proposed wellbore spacing unit consists of:

Lincoln State 1N-17C-M

T6N-R66W 16: NW/4NW/4, 17: N/2N/2, 18: N/2NE/4, NE/4NW/4
320.00 Acres

SRC Energy is not the only owner within the proposed wellbore spacing unit and hereby certifies to the Director that a thirty day (30-day) notice has been given by certified mail to all owners in the proposed wellbore spacing unit, as required by COGCC Rule 318A.e. (5). Copies of the required notification letters are on file at SRC Energy's office. The required thirty (30) day notice period has elapsed absent the receipt by SRC Energy of any objection to their proposal by the owner(s) within the proposed spacing unit for the subject well. We have not received any objections to such well location or proposed spacing unit, therefore, SRC Energy hereby requests the Director approve the well.

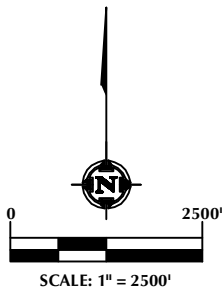
Enclosed is the Proposed Spacing Unit Plat to assist in your review and approval of SRC Energy's proposed Application for Permit to Drill (APD) for Lincoln State 1N-17C-M well. SRC Energy respectfully requests the COGCC to review the enclosed information and approve the exception location waiver request per Surface Use Agreement and APD for Lincoln State 1N-17C-M.

Thank you,
Erin Ekblad
Erin Ekblad
Manager of Regulatory Affairs
SRC Energy Inc.

Attachment: Proposed Spacing Unit Plat

DISTANCE FROM COMPLETED
PORTION OF WELLBORE TO
NEAREST UNIT BOUNDARY= 507'

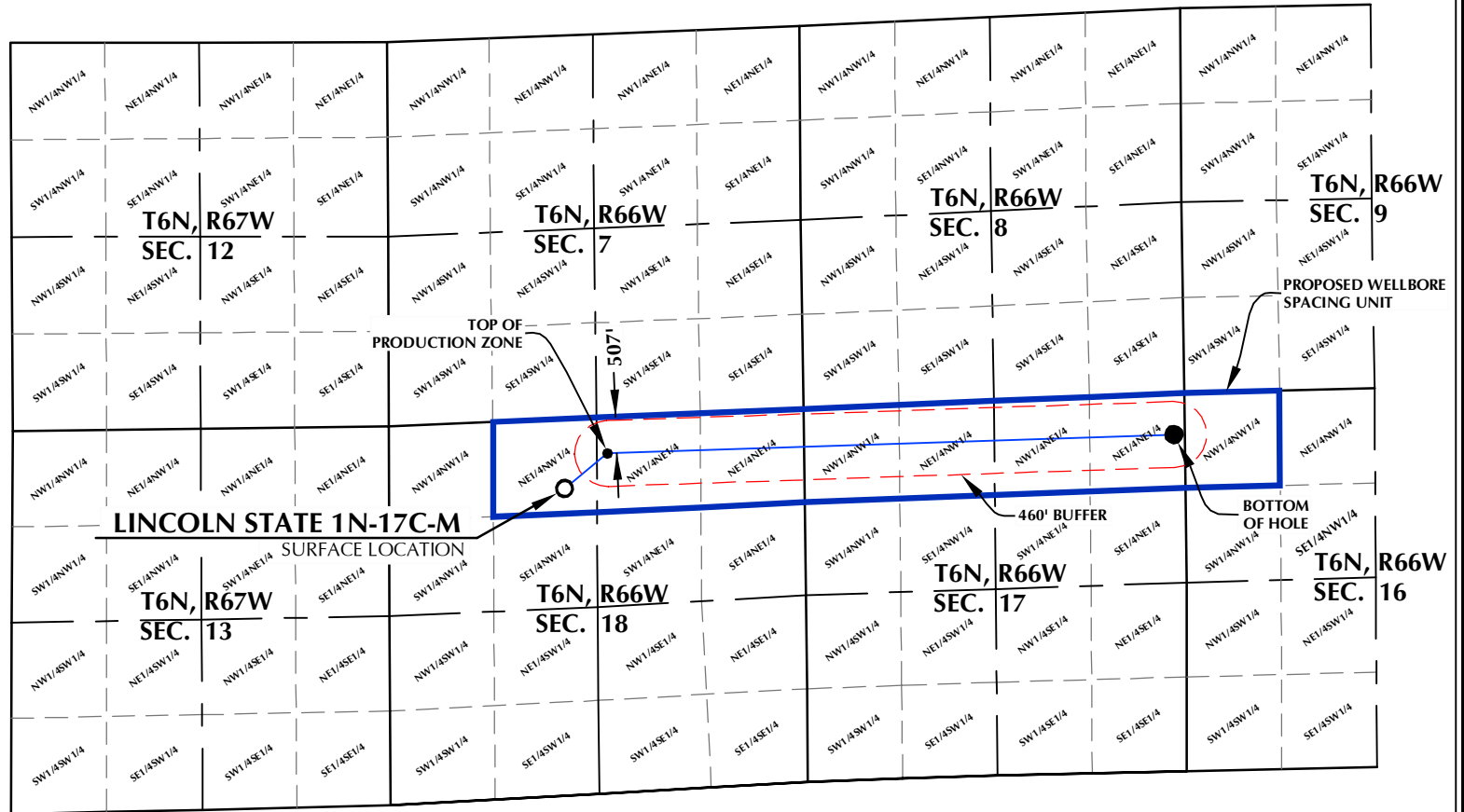
LINCOLN STATE 1N-17C-M WELLBORE SPACING UNIT



SURFACE LOCATION
GROUND ELEVATION= 4851.4'
LATITUDE= 40.491928°
LONGITUDE= -104.823557°
1/4 1/4: NE1/4 NW1/4

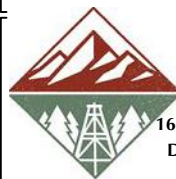
TOP OF PRODUCTION
LATITUDE= 40.493264°
LONGITUDE= -104.821388°
1/4 1/4: NW1/4 NE1/4

BOTTOM HOLE LOCATION
LATITUDE= 40.493820°
LONGITUDE= -104.792942°
1/4 1/4: NE1/4 NE1/4



WELL PAD - LINCOLN STATE 3-18 PAD

LINCOLN STATE 1N-17C-M
WELLBORE SPACING UNIT
973' FNL & 2451' FWL NENW (SURFACE)
507' FNL & 2744' FEL NWNE (TOP OF PRODUCTION)
LOCATED IN SECTION 18
573' FNL & 150' FEL NENE (BOTTOM)
LOCATED IN SECTION 17
T6N, R66W, 6TH P.M.
WELD COUNTY, COLORADO



SRC ENERGY
1675 Broadway, Suite 2600
Denver, Colorado 80202



CONSULTING, LLC

SHERIDAN OFFICE
1095 Saberton Avenue
Sheridan, Wyoming 82801
Phone 307-674-0609

LOVELAND OFFICE
1635 Foxtrail Drive, Suite 204
Loveland, Colorado 80538
Phone 970-776-4331

DRAFTED BY:	LMO	CHECKED BY:	JRS
DATE DRAFTED:	11/17/17	DATE SURVEYED:	6/22/17
REVISED:	11/30/17	FILE NAME:	17-86

NOTES:

1. DRAWING LATITUDE AND LONGITUDE COORDINATES ARE NAD 83 (2011)(EPOCH:2010)
2. ELEVATION BASED ON NAVD88 (GEOID12B)
3. BASIS OF BEARING DERIVED FROM COLORADO COORDINATE SYSTEM OF 1983 NORTH ZONE.
4. ALL MEASURED DISTANCES ARE GRID. COMBINED SCALE FACTOR: .99973779 CALCULATED FROM THE N. 1/4 CORNER OF SECTION 18, T6N, R66W.