

SRC ENERGY

**WELD COUNTY (NAD83, TRUE NORTH)
6N-66W-18 LINCOLN STATE 3-18 PAD
LINCOLN STATE 1N-17C-M**

Wellbore #1

Plan: Design #1

Standard Planning Report

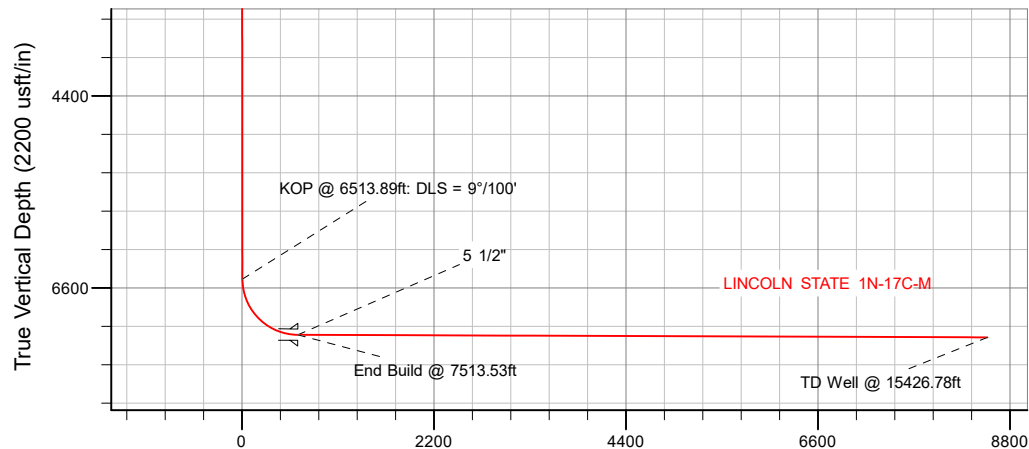
12 December, 2017

Project: WELD COUNTY (NAD83, TRUE NORTH)
Site: 6N-66W-18 LINCOLN STATE 3-18 PAD
Well: LINCOLN STATE 1N-17C-M
Wellbore: Wellbore #1
Design: Design #1

SRC ENERGY

CASING DETAILS

TVD	MD	Name	Size
1750.00	1753.34	9 5/8"	9-5/8
7136.00	7513.53	5 1/2"	5-1/2



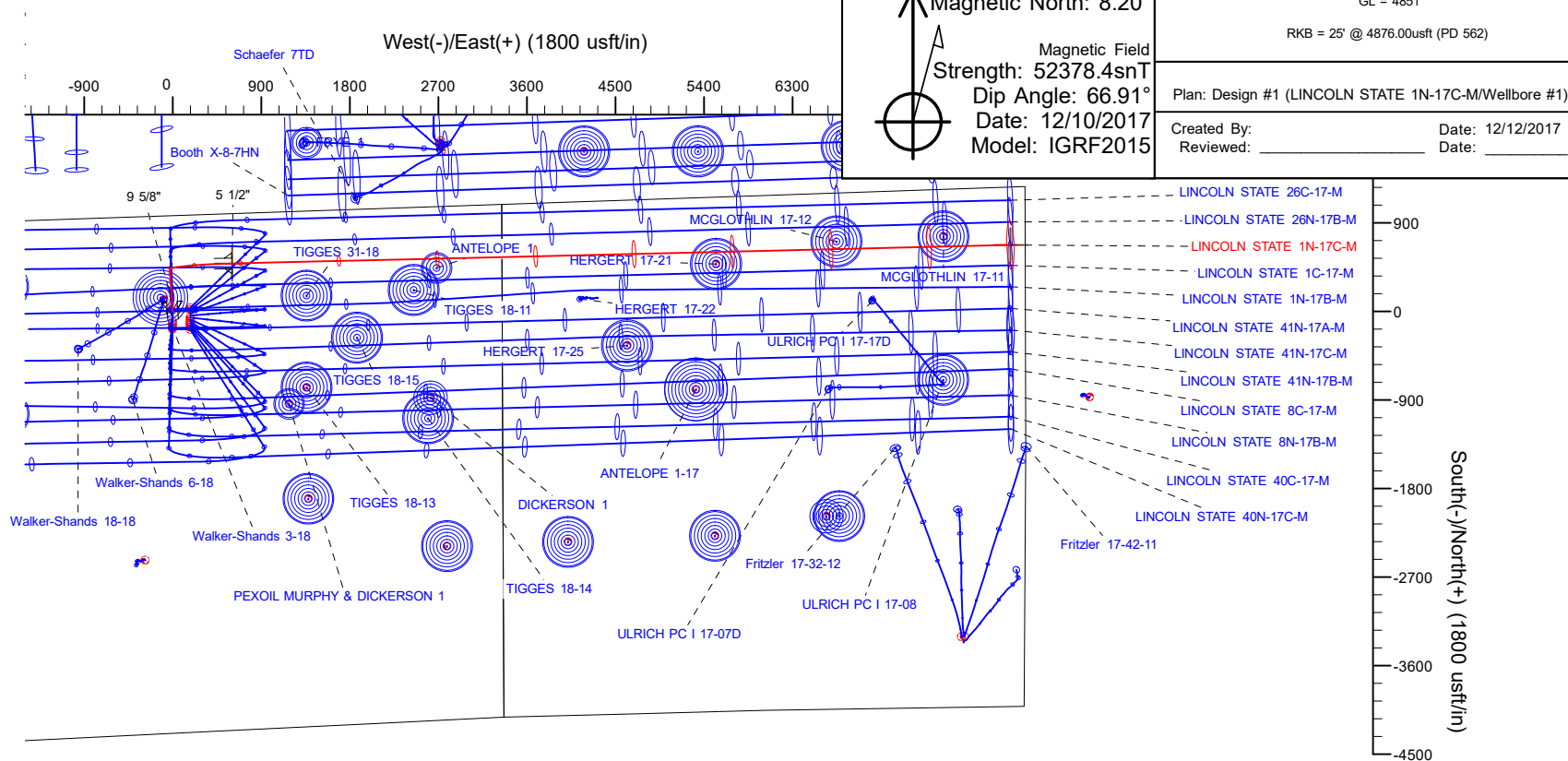
SECTION DETAILS

Sec	MD	Inc	Azi	TVD	+N/-S	+E/-W	Dleg	TFace	Vsect	Target
1	0.00	0.00	0.00	0.00	0.00	0.00	0.00	0.00	0.00	
2	250.00	0.00	0.00	250.00	0.00	0.00	0.00	0.00	0.00	
3	450.00	4.00	356.10	449.84	6.96	-0.47	2.00	356.10	0.08	
4	6513.89	4.00	356.10	6498.96	428.98	-29.24	0.00	0.00	4.78	
5	7513.53	89.79	88.64	7136.00	488.33	603.82	9.00	92.55	640.56	
6	15426.78	89.79	88.64	7165.00	675.74	8514.79	0.00	0.00	8541.57	Lincoln State 1N-17C-M_TD

WELLBORE TARGET DETAILS (LAT/LONG)

Name	TVD	+N/-S	+E/-W	Latitude	Longitude
Lincoln State 1N-17C-M_SHL	0.00	0.00	0.00	40.491928	-104.823557
Lincoln State 1N-17C-M_TD	7165.00	675.74	8514.79	40.493779	-104.792942

Vertical Section at 85.46° (2200 usft/in)



Project	WELD COUNTY (NAD83, TRUE NORTH)		
Map System:	US State Plane 1983	System Datum:	Mean Sea Level
Geo Datum:	North American Datum 1983		
Map Zone:	Colorado Northern Zone		

Site	6N-66W-18 LINCOLN STATE 3-18 PAD		
Site Position:		Northing:	1,422,807.42 usft
From:	Lat/Long	Easting:	3,188,319.02 usft
Position Uncertainty:	0.00 usft	Slot Radius:	13-3/16 "
		Latitude:	40.492034
		Longitude:	-104.822909
		Grid Convergence:	0.44 °

Well	LINCOLN STATE 1N-17C-M		
Well Position	+N/-S	-38.62 usft	Northing:
	+E/-W	-180.23 usft	Easting:
Position Uncertainty	3.28 usft		Wellhead Elevation:
			Latitude:
			Longitude:
			Ground Level:
			4,851.00 usft

Wellbore	Wellbore #1				
Magnetics	Model Name	Sample Date	Declination (°)	Dip Angle (°)	Field Strength (nT)
	IGRF2015	12/10/2017	8.20	66.91	52,378.44949697

Design	Design #1			
Audit Notes:				
Version:	Phase:	PLAN	Tie On Depth:	0.00
Vertical Section:	Depth From (TVD) (usft)	+N/-S (usft)	+E/-W (usft)	Direction (°)
	0.00	0.00	0.00	85.46

Plan Survey Tool Program	Date	12/12/2017		
Depth From (usft)	Depth To (usft)	Survey (Wellbore)	Tool Name	Remarks
1	0.00	1,750.00	Design #1 (Wellbore #1)	SRC Energy_ISCWSA REV 2 Fixed:v2:crustal field declinatio
2	1,750.00	15,426.78	Design #1 (Wellbore #1)	SRC Energy_ISCWSA REV 2 Fixed:v2:crustal field declinatio

Plan Sections										
Measured Depth (usft)	Inclination (°)	Azimuth (°)	Vertical Depth (usft)	+N/-S (usft)	+E/-W (usft)	Dogleg Rate (°/100usft)	Build Rate (°/100usft)	Turn Rate (°/100usft)	TFO (°)	Target
0.00	0.00	0.00	0.00	0.00	0.00	0.00	0.00	0.00	0.00	
250.00	0.00	0.00	250.00	0.00	0.00	0.00	0.00	0.00	0.00	
450.00	4.00	356.10	449.84	6.96	-0.47	2.00	2.00	0.00	356.10	
6,513.89	4.00	356.10	6,498.96	428.98	-29.24	0.00	0.00	0.00	0.00	
7,513.53	89.79	88.64	7,136.00	488.33	603.82	9.00	8.58	9.26	92.55	
15,426.78	89.79	88.64	7,165.00	675.74	8,514.79	0.00	0.00	0.00	0.00	Lincoln State 1N-17C

Planned Survey									
Measured Depth (usft)	Inclination (°)	Azimuth (°)	Vertical Depth (usft)	+N/-S (usft)	+E/-W (usft)	Vertical Section (usft)	Dogleg Rate (°/100usft)	Build Rate (°/100usft)	Turn Rate (°/100usft)
0.00	0.00	0.00	0.00	0.00	0.00	0.00	0.00	0.00	0.00
100.00	0.00	0.00	100.00	0.00	0.00	0.00	0.00	0.00	0.00
200.00	0.00	0.00	200.00	0.00	0.00	0.00	0.00	0.00	0.00
250.00	0.00	0.00	250.00	0.00	0.00	0.00	0.00	0.00	0.00
Begin Nudge @ 250.00ft									
300.00	1.00	356.10	300.00	0.44	-0.03	0.00	2.00	2.00	0.00
400.00	3.00	356.10	399.93	3.92	-0.27	0.04	2.00	2.00	0.00
450.00	4.00	356.10	449.84	6.96	-0.47	0.08	2.00	2.00	0.00
End Nudge @ 450.00ft									
500.00	4.00	356.10	499.72	10.44	-0.71	0.12	0.00	0.00	0.00
600.00	4.00	356.10	599.47	17.40	-1.19	0.19	0.00	0.00	0.00
700.00	4.00	356.10	699.23	24.36	-1.66	0.27	0.00	0.00	0.00
800.00	4.00	356.10	798.99	31.32	-2.14	0.35	0.00	0.00	0.00
900.00	4.00	356.10	898.74	38.28	-2.61	0.43	0.00	0.00	0.00
1,000.00	4.00	356.10	998.50	45.24	-3.08	0.50	0.00	0.00	0.00
1,100.00	4.00	356.10	1,098.25	52.20	-3.56	0.58	0.00	0.00	0.00
1,200.00	4.00	356.10	1,198.01	59.16	-4.03	0.66	0.00	0.00	0.00
1,300.00	4.00	356.10	1,297.77	66.12	-4.51	0.74	0.00	0.00	0.00
1,400.00	4.00	356.10	1,397.52	73.08	-4.98	0.81	0.00	0.00	0.00
1,500.00	4.00	356.10	1,497.28	80.04	-5.46	0.89	0.00	0.00	0.00
1,600.00	4.00	356.10	1,597.04	87.00	-5.93	0.97	0.00	0.00	0.00
1,700.00	4.00	356.10	1,696.79	93.96	-6.41	1.05	0.00	0.00	0.00
1,753.34	4.00	356.10	1,750.00	97.67	-6.66	1.09	0.00	0.00	0.00
9 5/8"									
1,800.00	4.00	356.10	1,796.55	100.92	-6.88	1.13	0.00	0.00	0.00
1,900.00	4.00	356.10	1,896.31	107.87	-7.35	1.20	0.00	0.00	0.00
2,000.00	4.00	356.10	1,996.06	114.83	-7.83	1.28	0.00	0.00	0.00
2,100.00	4.00	356.10	2,095.82	121.79	-8.30	1.36	0.00	0.00	0.00
2,200.00	4.00	356.10	2,195.57	128.75	-8.78	1.44	0.00	0.00	0.00
2,300.00	4.00	356.10	2,295.33	135.71	-9.25	1.51	0.00	0.00	0.00
2,400.00	4.00	356.10	2,395.09	142.67	-9.73	1.59	0.00	0.00	0.00
2,500.00	4.00	356.10	2,494.84	149.63	-10.20	1.67	0.00	0.00	0.00
2,600.00	4.00	356.10	2,594.60	156.59	-10.68	1.75	0.00	0.00	0.00
2,700.00	4.00	356.10	2,694.36	163.55	-11.15	1.82	0.00	0.00	0.00
2,800.00	4.00	356.10	2,794.11	170.51	-11.62	1.90	0.00	0.00	0.00
2,900.00	4.00	356.10	2,893.87	177.47	-12.10	1.98	0.00	0.00	0.00
3,000.00	4.00	356.10	2,993.63	184.43	-12.57	2.06	0.00	0.00	0.00
3,100.00	4.00	356.10	3,093.38	191.39	-13.05	2.13	0.00	0.00	0.00
3,200.00	4.00	356.10	3,193.14	198.35	-13.52	2.21	0.00	0.00	0.00
3,300.00	4.00	356.10	3,292.90	205.31	-14.00	2.29	0.00	0.00	0.00
3,400.00	4.00	356.10	3,392.65	212.27	-14.47	2.37	0.00	0.00	0.00
3,500.00	4.00	356.10	3,492.41	219.23	-14.95	2.44	0.00	0.00	0.00
3,600.00	4.00	356.10	3,592.16	226.19	-15.42	2.52	0.00	0.00	0.00
3,700.00	4.00	356.10	3,691.92	233.15	-15.89	2.60	0.00	0.00	0.00
3,800.00	4.00	356.10	3,791.68	240.11	-16.37	2.68	0.00	0.00	0.00
3,900.00	4.00	356.10	3,891.43	247.06	-16.84	2.75	0.00	0.00	0.00
4,000.00	4.00	356.10	3,991.19	254.02	-17.32	2.83	0.00	0.00	0.00
4,100.00	4.00	356.10	4,090.95	260.98	-17.79	2.91	0.00	0.00	0.00
4,200.00	4.00	356.10	4,190.70	267.94	-18.27	2.99	0.00	0.00	0.00
4,300.00	4.00	356.10	4,290.46	274.90	-18.74	3.07	0.00	0.00	0.00
4,400.00	4.00	356.10	4,390.22	281.86	-19.22	3.14	0.00	0.00	0.00
4,500.00	4.00	356.10	4,489.97	288.82	-19.69	3.22	0.00	0.00	0.00
4,600.00	4.00	356.10	4,589.73	295.78	-20.16	3.30	0.00	0.00	0.00
4,700.00	4.00	356.10	4,689.48	302.74	-20.64	3.38	0.00	0.00	0.00
4,800.00	4.00	356.10	4,789.24	309.70	-21.11	3.45	0.00	0.00	0.00
4,900.00	4.00	356.10	4,889.00	316.66	-21.59	3.53	0.00	0.00	0.00
5,000.00	4.00	356.10	4,988.75	323.62	-22.06	3.61	0.00	0.00	0.00
5,100.00	4.00	356.10	5,088.51	330.58	-22.54	3.69	0.00	0.00	0.00
5,200.00	4.00	356.10	5,188.27	337.54	-23.01	3.76	0.00	0.00	0.00
5,300.00	4.00	356.10	5,288.02	344.50	-23.49	3.84	0.00	0.00	0.00
5,400.00	4.00	356.10	5,387.78	351.46	-23.96	3.92	0.00	0.00	0.00
5,500.00	4.00	356.10	5,487.54	358.42	-24.43	4.00	0.00	0.00	0.00
5,600.00	4.00	356.10	5,587.29	365.38	-24.91	4.07	0.00	0.00	0.00
5,700.00	4.00	356.10	5,687.05	372.34	-25.38	4.15	0.00	0.00	0.00
5,800.00	4.00	356.10	5,786.81	379.30	-25.86	4.23	0.00	0.00	0.00
5,900.00	4.00	356.10	5,886.56	386.25	-26.33	4.31	0.00	0.00	0.00

Planned Survey									
Measured Depth (usft)	Inclination (°)	Azimuth (°)	Vertical Depth (usft)	+N/-S (usft)	+E/-W (usft)	Vertical Section (usft)	Dogleg Rate (°/100usft)	Build Rate (°/100usft)	Turn Rate (°/100usft)
6,000.00	4.00	356.10	5,986.32	393.21	-26.81	4.38	0.00	0.00	0.00
6,100.00	4.00	356.10	6,086.07	400.17	-27.28	4.46	0.00	0.00	0.00
6,200.00	4.00	356.10	6,185.83	407.13	-27.76	4.54	0.00	0.00	0.00
6,300.00	4.00	356.10	6,285.59	414.09	-28.23	4.62	0.00	0.00	0.00
6,400.00	4.00	356.10	6,385.34	421.05	-28.70	4.69	0.00	0.00	0.00
6,500.00	4.00	356.10	6,485.10	428.01	-29.18	4.77	0.00	0.00	0.00
6,513.89	4.00	356.10	6,498.96	428.98	-29.24	4.78	0.00	0.00	0.00
KOP @ 6513.89ft: DLS = 9°/100'									
6,550.00	5.04	36.25	6,534.96	431.51	-28.39	5.83	9.00	2.88	111.20
6,600.00	8.56	60.99	6,584.61	435.09	-23.84	10.66	9.00	7.03	49.47
6,650.00	12.71	70.61	6,633.75	438.72	-15.39	19.36	9.00	8.30	19.24
6,700.00	17.03	75.48	6,682.06	442.39	-3.11	31.89	9.00	8.65	9.74
6,750.00	21.43	78.41	6,729.26	446.06	12.93	48.18	9.00	8.79	5.86
6,800.00	25.86	80.37	6,775.05	449.72	32.64	68.12	9.00	8.86	3.93
6,850.00	30.31	81.79	6,819.16	453.35	55.89	91.58	9.00	8.90	2.85
6,900.00	34.77	82.88	6,861.30	456.92	82.54	118.43	9.00	8.92	2.18
6,950.00	39.24	83.75	6,901.21	460.41	112.43	148.50	9.00	8.94	1.74
7,000.00	43.72	84.47	6,938.66	463.80	145.36	181.60	9.00	8.95	1.43
7,050.00	48.20	85.08	6,973.41	467.06	181.15	217.53	9.00	8.96	1.22
7,100.00	52.68	85.60	7,005.25	470.19	219.56	256.06	9.00	8.96	1.06
7,150.00	57.16	86.07	7,033.98	473.15	260.36	296.97	9.00	8.97	0.94
7,200.00	61.65	86.50	7,059.42	475.93	303.29	339.99	9.00	8.97	0.85
7,250.00	66.13	86.89	7,081.42	478.52	348.10	384.87	9.00	8.97	0.78
7,300.00	70.62	87.25	7,099.84	480.90	394.51	431.32	9.00	8.97	0.73
7,350.00	75.11	87.59	7,114.57	483.04	442.23	479.06	9.00	8.98	0.69
7,400.00	79.60	87.92	7,125.52	484.95	490.97	527.80	9.00	8.98	0.66
7,450.00	84.09	88.24	7,132.61	486.61	540.42	577.23	9.00	8.98	0.64
7,500.00	88.58	88.56	7,135.81	488.00	590.29	627.04	9.00	8.98	0.63
7,513.53	89.79	88.64	7,136.00	488.33	603.81	640.55	9.00	8.98	0.63
End Build @ 7513.53ft - 5 1/2"									
7,600.00	89.79	88.64	7,136.32	490.38	690.26	726.89	0.00	0.00	0.00
7,700.00	89.79	88.64	7,136.68	492.74	790.23	826.73	0.00	0.00	0.00
7,800.00	89.79	88.64	7,137.05	495.11	890.20	926.58	0.00	0.00	0.00
7,900.00	89.79	88.64	7,137.42	497.48	990.17	1,026.42	0.00	0.00	0.00
8,000.00	89.79	88.64	7,137.78	499.85	1,090.14	1,126.27	0.00	0.00	0.00
8,100.00	89.79	88.64	7,138.15	502.22	1,190.12	1,226.12	0.00	0.00	0.00
8,200.00	89.79	88.64	7,138.52	504.59	1,290.09	1,325.96	0.00	0.00	0.00
8,300.00	89.79	88.64	7,138.88	506.95	1,390.06	1,425.81	0.00	0.00	0.00
8,400.00	89.79	88.64	7,139.25	509.32	1,490.03	1,525.65	0.00	0.00	0.00
8,500.00	89.79	88.64	7,139.62	511.69	1,590.00	1,625.50	0.00	0.00	0.00
8,600.00	89.79	88.64	7,139.98	514.06	1,689.97	1,725.34	0.00	0.00	0.00
8,700.00	89.79	88.64	7,140.35	516.43	1,789.94	1,825.19	0.00	0.00	0.00
8,800.00	89.79	88.64	7,140.72	518.80	1,889.91	1,925.03	0.00	0.00	0.00
8,900.00	89.79	88.64	7,141.08	521.16	1,989.89	2,024.88	0.00	0.00	0.00
9,000.00	89.79	88.64	7,141.45	523.53	2,089.86	2,124.72	0.00	0.00	0.00
9,100.00	89.79	88.64	7,141.81	525.90	2,189.83	2,224.57	0.00	0.00	0.00
9,200.00	89.79	88.64	7,142.18	528.27	2,289.80	2,324.41	0.00	0.00	0.00
9,300.00	89.79	88.64	7,142.55	530.64	2,389.77	2,424.26	0.00	0.00	0.00
9,400.00	89.79	88.64	7,142.91	533.01	2,489.74	2,524.10	0.00	0.00	0.00
9,500.00	89.79	88.64	7,143.28	535.37	2,589.71	2,623.95	0.00	0.00	0.00
9,600.00	89.79	88.64	7,143.65	537.74	2,689.68	2,723.80	0.00	0.00	0.00
9,700.00	89.79	88.64	7,144.01	540.11	2,789.66	2,823.64	0.00	0.00	0.00
9,800.00	89.79	88.64	7,144.38	542.48	2,889.63	2,923.49	0.00	0.00	0.00
9,900.00	89.79	88.64	7,144.75	544.85	2,989.60	3,023.33	0.00	0.00	0.00
10,000.00	89.79	88.64	7,145.11	547.22	3,089.57	3,123.18	0.00	0.00	0.00
10,100.00	89.79	88.64	7,145.48	549.58	3,189.54	3,223.02	0.00	0.00	0.00
10,200.00	89.79	88.64	7,145.85	551.95	3,289.51	3,322.87	0.00	0.00	0.00
10,300.00	89.79	88.64	7,146.21	554.32	3,389.48	3,422.71	0.00	0.00	0.00
10,400.00	89.79	88.64	7,146.58	556.69	3,489.45	3,522.56	0.00	0.00	0.00
10,500.00	89.79	88.64	7,146.95	559.06	3,589.43	3,622.40	0.00	0.00	0.00
10,600.00	89.79	88.64	7,147.31	561.43	3,689.40	3,722.25	0.00	0.00	0.00
10,700.00	89.79	88.64	7,147.68	563.79	3,789.37	3,822.09	0.00	0.00	0.00
10,800.00	89.79	88.64	7,148.04	566.16	3,889.34	3,921.94	0.00	0.00	0.00
10,900.00	89.79	88.64	7,148.41	568.53	3,989.31	4,021.78	0.00	0.00	0.00
11,000.00	89.79	88.64	7,148.78	570.90	4,089.28	4,121.63	0.00	0.00	0.00
11,100.00	89.79	88.64	7,149.14	573.27	4,189.25	4,221.47	0.00	0.00	0.00

Planned Survey										
Measured Depth (usft)	Inclination (°)	Azimuth (°)	Vertical Depth (usft)	+N/-S (usft)	+E/-W (usft)	Vertical Section (usft)	Dogleg Rate (°/100usft)	Build Rate (°/100usft)	Turn Rate (°/100usft)	
11,200.00	89.79	88.64	7,149.51	575.64	4,289.22	4,321.32	0.00	0.00	0.00	
11,300.00	89.79	88.64	7,149.88	578.00	4,389.20	4,421.17	0.00	0.00	0.00	
11,400.00	89.79	88.64	7,150.24	580.37	4,489.17	4,521.01	0.00	0.00	0.00	
11,500.00	89.79	88.64	7,150.61	582.74	4,589.14	4,620.86	0.00	0.00	0.00	
11,600.00	89.79	88.64	7,150.98	585.11	4,689.11	4,720.70	0.00	0.00	0.00	
11,700.00	89.79	88.64	7,151.34	587.48	4,789.08	4,820.55	0.00	0.00	0.00	
11,800.00	89.79	88.64	7,151.71	589.85	4,889.05	4,920.39	0.00	0.00	0.00	
11,900.00	89.79	88.64	7,152.08	592.21	4,989.02	5,020.24	0.00	0.00	0.00	
12,000.00	89.79	88.64	7,152.44	594.58	5,089.00	5,120.08	0.00	0.00	0.00	
12,100.00	89.79	88.64	7,152.81	596.95	5,188.97	5,219.93	0.00	0.00	0.00	
12,200.00	89.79	88.64	7,153.18	599.32	5,288.94	5,319.77	0.00	0.00	0.00	
12,300.00	89.79	88.64	7,153.54	601.69	5,388.91	5,419.62	0.00	0.00	0.00	
12,400.00	89.79	88.64	7,153.91	604.06	5,488.88	5,519.46	0.00	0.00	0.00	
12,500.00	89.79	88.64	7,154.27	606.42	5,588.85	5,619.31	0.00	0.00	0.00	
12,600.00	89.79	88.64	7,154.64	608.79	5,688.82	5,719.15	0.00	0.00	0.00	
12,700.00	89.79	88.64	7,155.01	611.16	5,788.79	5,819.00	0.00	0.00	0.00	
12,800.00	89.79	88.64	7,155.37	613.53	5,888.77	5,918.85	0.00	0.00	0.00	
12,900.00	89.79	88.64	7,155.74	615.90	5,988.74	6,018.69	0.00	0.00	0.00	
13,000.00	89.79	88.64	7,156.11	618.27	6,088.71	6,118.54	0.00	0.00	0.00	
13,100.00	89.79	88.64	7,156.47	620.63	6,188.68	6,218.38	0.00	0.00	0.00	
13,200.00	89.79	88.64	7,156.84	623.00	6,288.65	6,318.23	0.00	0.00	0.00	
13,300.00	89.79	88.64	7,157.21	625.37	6,388.62	6,418.07	0.00	0.00	0.00	
13,400.00	89.79	88.64	7,157.57	627.74	6,488.59	6,517.92	0.00	0.00	0.00	
13,500.00	89.79	88.64	7,157.94	630.11	6,588.56	6,617.76	0.00	0.00	0.00	
13,600.00	89.79	88.64	7,158.31	632.48	6,688.54	6,717.61	0.00	0.00	0.00	
13,700.00	89.79	88.64	7,158.67	634.84	6,788.51	6,817.45	0.00	0.00	0.00	
13,800.00	89.79	88.64	7,159.04	637.21	6,888.48	6,917.30	0.00	0.00	0.00	
13,900.00	89.79	88.64	7,159.41	639.58	6,988.45	7,017.14	0.00	0.00	0.00	
14,000.00	89.79	88.64	7,159.77	641.95	7,088.42	7,116.99	0.00	0.00	0.00	
14,100.00	89.79	88.64	7,160.14	644.32	7,188.39	7,216.83	0.00	0.00	0.00	
14,200.00	89.79	88.64	7,160.50	646.69	7,288.36	7,316.68	0.00	0.00	0.00	
14,300.00	89.79	88.64	7,160.87	649.05	7,388.33	7,416.53	0.00	0.00	0.00	
14,400.00	89.79	88.64	7,161.24	651.42	7,488.31	7,516.37	0.00	0.00	0.00	
14,500.00	89.79	88.64	7,161.60	653.79	7,588.28	7,616.22	0.00	0.00	0.00	
14,600.00	89.79	88.64	7,161.97	656.16	7,688.25	7,716.06	0.00	0.00	0.00	
14,700.00	89.79	88.64	7,162.34	658.53	7,788.22	7,815.91	0.00	0.00	0.00	
14,800.00	89.79	88.64	7,162.70	660.90	7,888.19	7,915.75	0.00	0.00	0.00	
14,900.00	89.79	88.64	7,163.07	663.26	7,988.16	8,015.60	0.00	0.00	0.00	
15,000.00	89.79	88.64	7,163.44	665.63	8,088.13	8,115.44	0.00	0.00	0.00	
15,100.00	89.79	88.64	7,163.80	668.00	8,188.10	8,215.29	0.00	0.00	0.00	
15,200.00	89.79	88.64	7,164.17	670.37	8,288.08	8,315.13	0.00	0.00	0.00	
15,300.00	89.79	88.64	7,164.54	672.74	8,388.05	8,414.98	0.00	0.00	0.00	
15,400.00	89.79	88.64	7,164.90	675.11	8,488.02	8,514.82	0.00	0.00	0.00	
15,426.78	89.79	88.64	7,165.00	675.74	8,514.79	8,541.57	0.00	0.00	0.00	
TD Well @ 15426.78ft										

Casing Points						
Measured Depth (usft)	Vertical Depth (usft)	Name			Casing Diameter (")	Hole Diameter (")
1,753.34	1,750.00	9 5/8"			9-5/8	13-1/2
7,513.53	7,136.00	5 1/2"			5-1/2	8-1/2

Plan Annotations					
Measured Depth (usft)	Vertical Depth (usft)	Local Coordinates			
		+N/-S (usft)	+E/-W (usft)	Comment	
250.00	250.00	0.00	0.00	Begin Nudge @ 250.00ft	
450.00	449.84	6.96	-0.47	End Nudge @ 450.00ft	
6,513.89	6,498.96	428.98	-29.24	KOP @ 6513.89ft: DLS = 9°/100'	
7,513.53	7,136.00	488.33	603.82	End Build @ 7513.53ft	
15,426.78	7,165.00	675.74	8,514.79	TD Well @ 15426.78ft	