

Great Western Operating Company, LLC

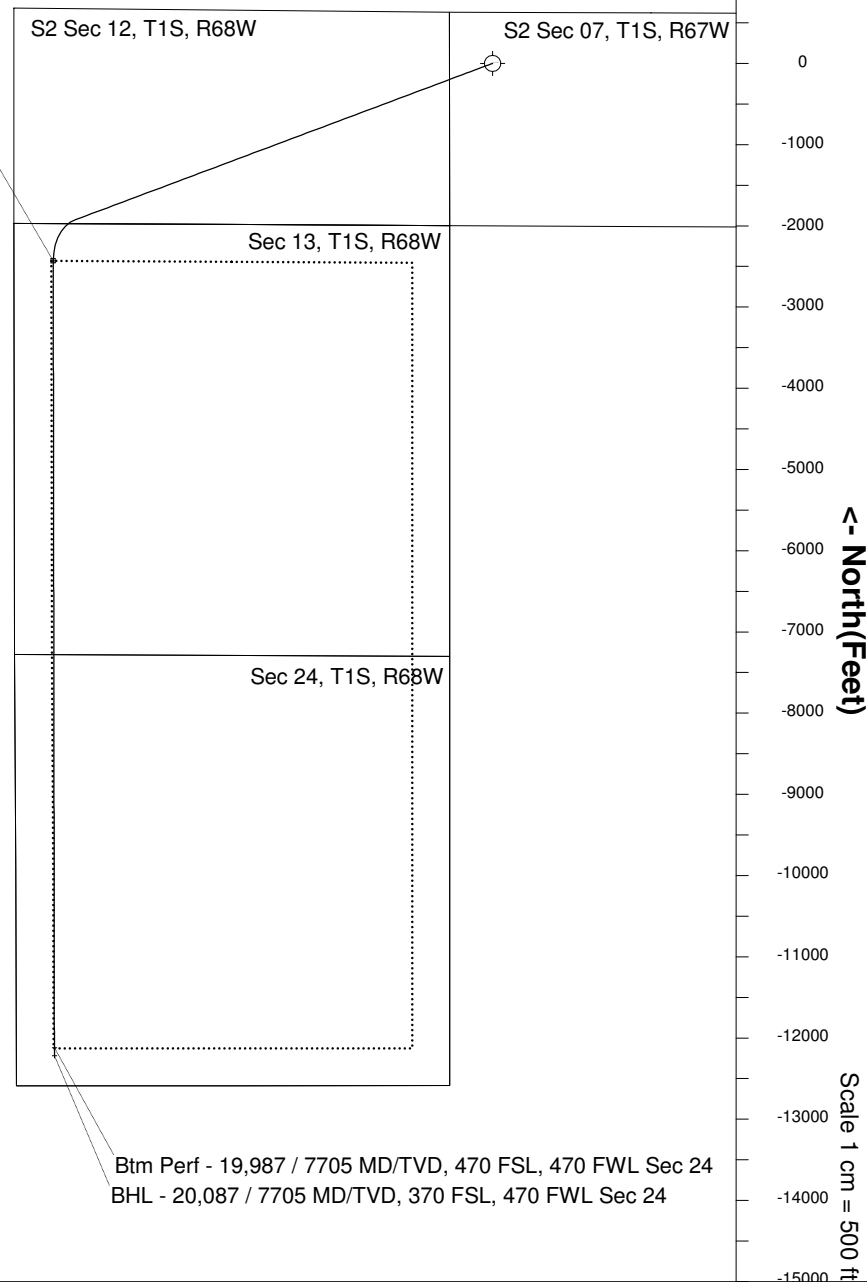
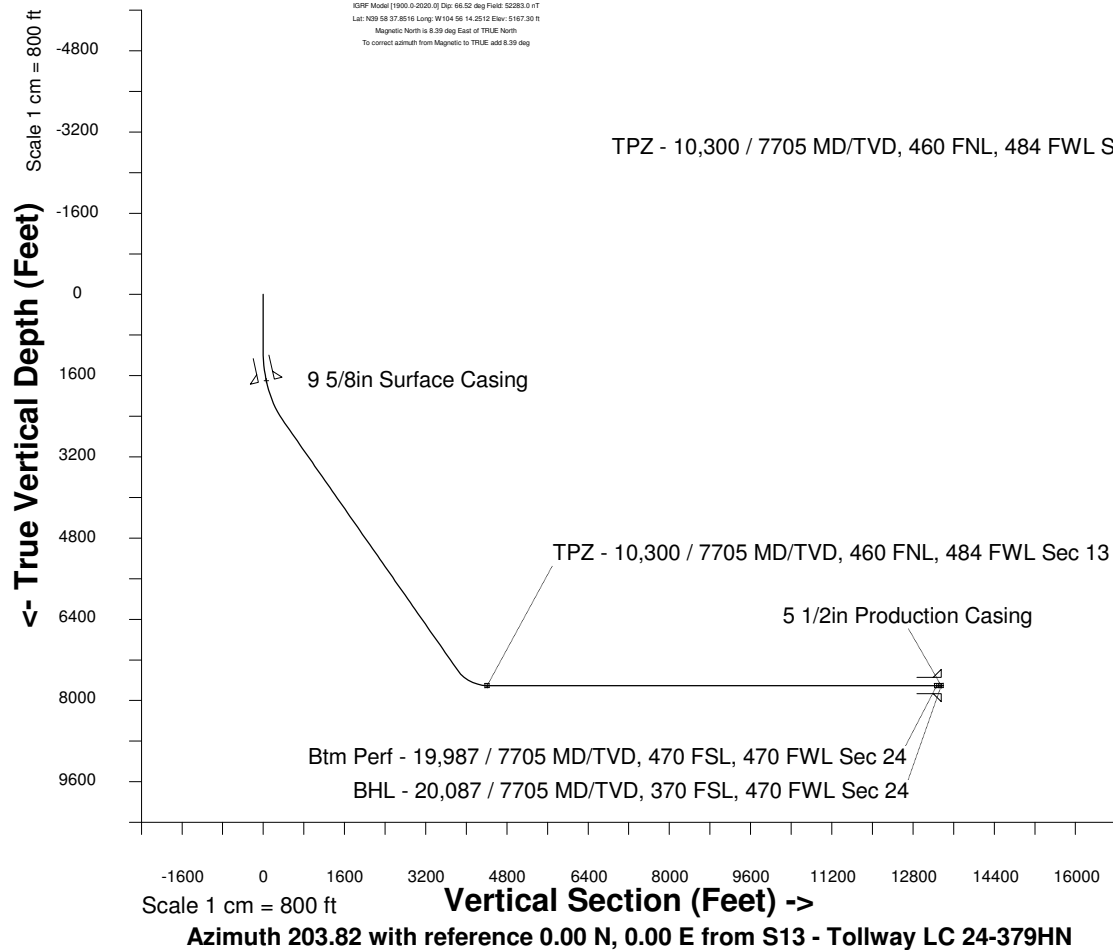
Location Colorado
Field Wattenburg
Installation Tollway
Slot S13 - Tollway LC 24-379HN
Well Tollway LC 24-379HN
Wellbore Tollway LC 24-379HN (PWB)

Created by admin
Date plotted 17-Jan-2018
Plot reference is Tollway LC 24-379HN (PWB).
Ref wellpath is Tollway LC 24-379HN (PWP#1).
Coordinates are in Feet reference S13 - Tollway LC 24-379HN.
True Vertical Depths are reference Rig Datum.
Measured Depths are reference Rig Datum.
Rig Datum: Planned Datum #1
Rig Datum to Mean Sea Level: 5187.30 ft.
Plot North is aligned to TRUE North.

Scale 1 cm = 500 ft
East (Feet) ->

-10000 -9000 -8000 -7000 -6000 -5000 -4000 -3000 -2000 -1000 0 1000 2000 3000

20-Apr-2016
KOPF Model [1900.0-2020.0] Dip: 66.52 deg Field: 52283.0 nT
Lat: N29 58 37.8516 Long: W104 56 14.2512 Elev: 5167.30 ft
Magnetic North is 8.39 deg East of TRUE North
To correct azimuth from Magnetic to TRUE, add 8.39 deg



WELL PROFILE DATA

Point	MD	Inc	Azi	TVD	North	East	deg/100ft	V. Sect
Tie on	0.00	0.00	0.00	0.00	S 0.00	W 0.00		-0.00
KOP	1137.00	0.00	249.45	1137.00	S 0.00	W 0.00	0.00	-0.00
End of Build	2637.13	45.00	249.45	2487.56	S 196.36	W 523.88	9.84	391.23
End of Hold	9611.53	45.00	249.45	7418.88	S 1927.38	W 5142.11	0.00	3840.03
Target TPZ - ...Sec 13	10299.59	90.00	179.92	7705.00	S 2432.47	W 5409.47	36.09	4410.08
Target Btm Pe...Sec 24	19986.66	90.00	179.92	7705.00	S 12119.54	W 5395.31	0.00	13266.16
End of Turn	19987.25	90.00	179.85	7705.00	S 12120.12	W 5395.31	36.09	13266.69
T.D. & Target BHL... 24	20086.84	90.00	179.85	7705.00	S 12219.72	W 5395.05	0.00	13357.70