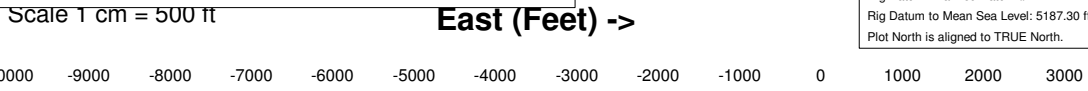
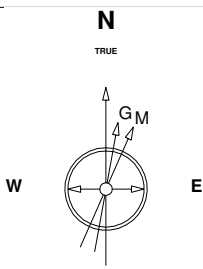


Great Western Operating Company, LLC

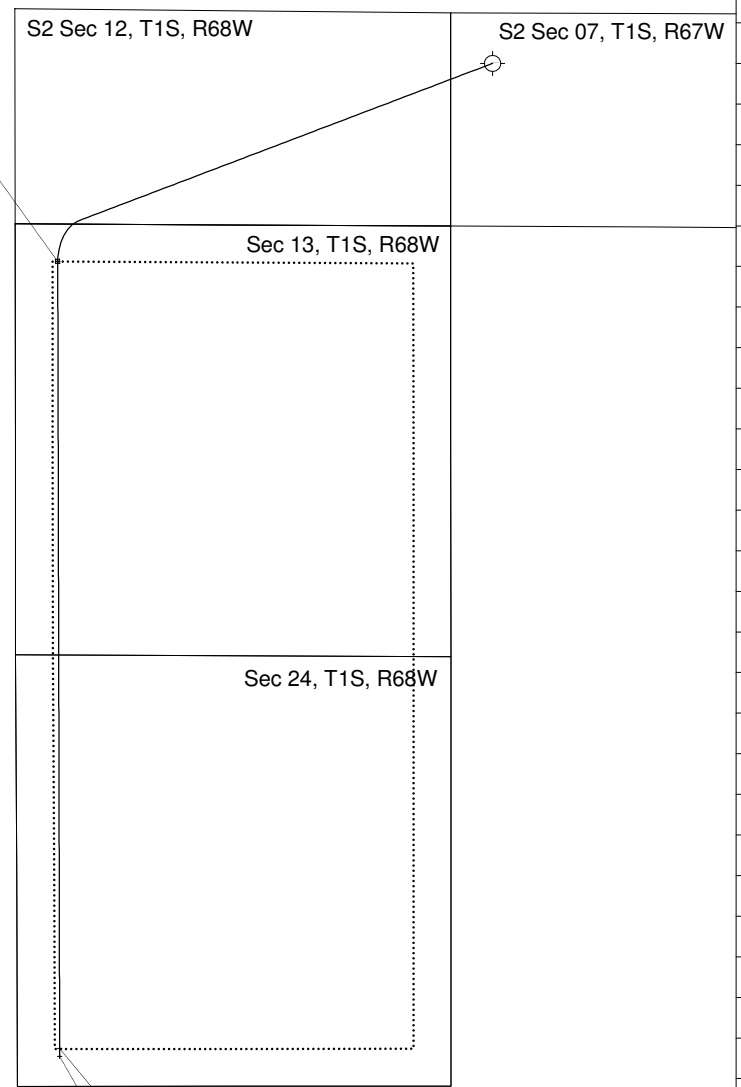
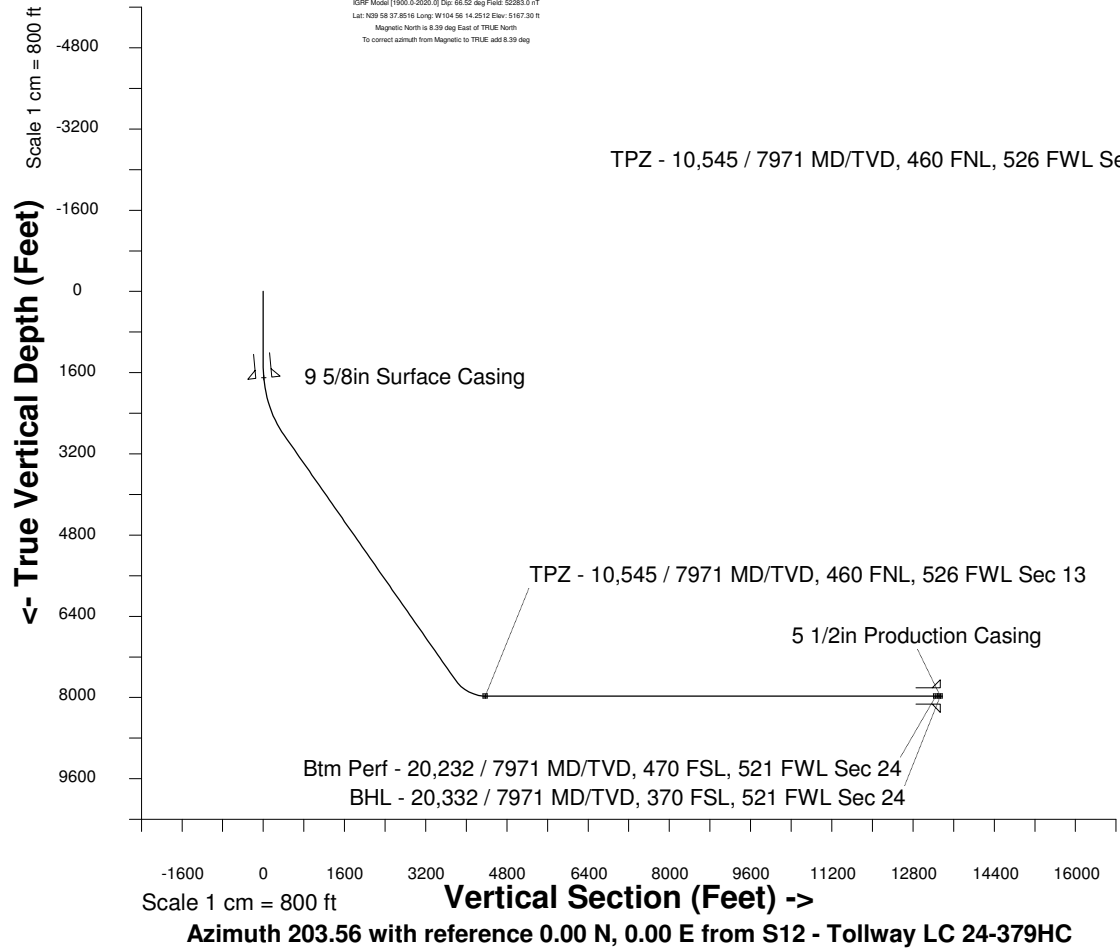
Created by admin
Date plotted 17-Jan-2018

Location Colorado **Slot** S12 - Tollway LC 24-379HC
Field Wattenburg **Well** Tollway LC 24-379HC
Installation Tollway **Wellbore** Tollway LC 24-379HC (PWB)

Plot reference is Tollway LC 24-379HC (PWB).
 Ref wellpath is Tollway LC 24-379HC (PWP#1).
 Coordinates are in Feet reference S12 - Tollway LC 24-379HC.
 True Vertical Depths are reference Rig Datum.
 Measured Depths are reference Rig Datum.
 Rig Datum: Planned Datum #1
 Rig Datum to Mean Sea Level: 5187.30 ft.
 Plot North is aligned to TRUE North.



20-Apr-2016
 IGRF Model [1900-0-2020-0] Dip: 66.52 deg Field: 52283.0 nT
 Lat: N09 58 37.8516 Long: W104 56 14.2512 Elev: 5187.30 ft
 Magnetic North is 8.39 deg East of TRUE North
 To correct azimuth from Magnetic to TRUE, add 8.39 deg



Btm Perf - 20,232 / 7971 MD/TVD, 470 FSL, 521 FWL Sec 24
 BHL - 20,332 / 7971 MD/TVD, 370 FSL, 521 FWL Sec 24

WELL PROFILE DATA

Point	MD	Inc	Azi	TVD	North	East	deg/100ft	V. Sect
Tie on	0.00	0.00	0.00	0.00	S 0.00	W 0.00		-0.00
KOP	1451.00	0.00	249.19	1451.00	S 0.00	W 0.00	0.00	-0.00
End of Build	2950.92	45.00	249.19	2801.42	S 198.74	W 522.83	9.84	391.12
End of Hold	9857.89	45.00	249.19	7685.59	S 1934.03	W 5087.89	0.00	3806.20
Target TPZ - ...Sec 13	10544.64	90.00	179.86	7971.00	S 2439.04	W 5353.69	36.09	4375.35
Target Btm Pe...Sec 24	20231.73	90.00	179.86	7971.00	S 12126.11	W 5330.54	0.00	13245.96
End of Turn	20231.84	90.00	179.85	7971.00	S 12126.21	W 5330.54	36.09	13246.06
T.D. & Target BHL... 24	20331.91	90.00	179.85	7971.00	S 12226.29	W 5330.28	0.00	13337.69

Scale 1 cm = 500 ft