

Great Western Operating Company, LLC

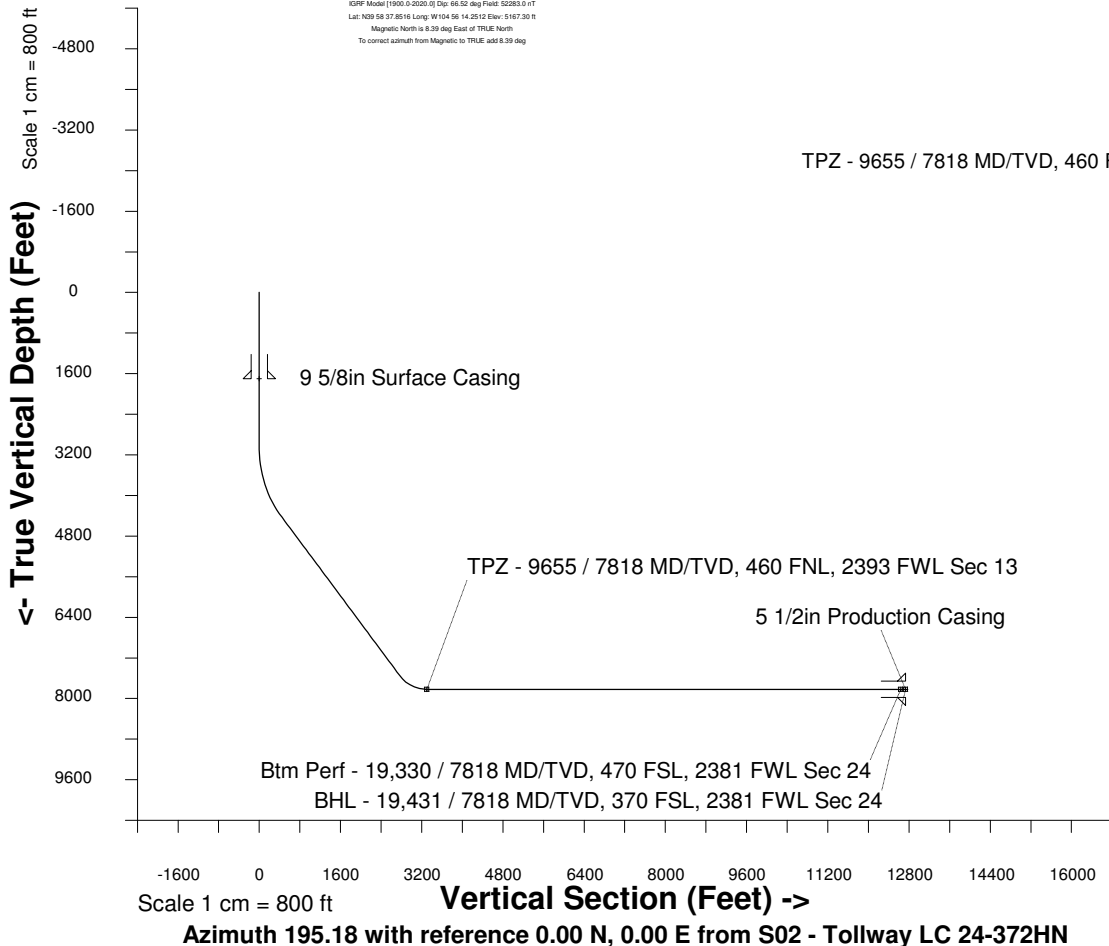
Location Colorado
Field Wattenburg
Installation Tollway
Slot S02 - Tollway LC 24-372HN
Well Tollway LC 24-372HN
Wellbore Tollway LC 24-372HN (PWB)

Created by admin
Date plotted 17-Jan-2018
Plot reference is Tollway LC 24-372HN (PWB).
Ref wellpath is Tollway LC 24-372HN (PWP#1).
Coordinates are in Feet reference S02 - Tollway LC 24-372HN.
True Vertical Depths are reference Rig Datum.
Measured Depths are reference Rig Datum.
Rig Datum: Planned Datum #1
Rig Datum to Mean Sea Level: 5187.30 ft.
Plot North is aligned to TRUE North.

Scale 1 cm = 500 ft
East (Feet) ->

-10000 -9000 -8000 -7000 -6000 -5000 -4000 -3000 -2000 -1000 0 1000 2000 3000

20-Apr-2016
KOPF Model [1900.0-2020.0] Dip: 66.52 deg Field: 52283.0 nT
Lat: N29 58 37.8516 Long: W104 56 14.2512 Elev: 5167.30 ft
Magnetic North is 6.59 deg East of TRUE North
To correct azimuth from Magnetic to TRUE, add 6.59 deg



WELL PROFILE DATA

Point	MD	Inc	Azi	TVD	North	East	deg/100ft	V. Sect
Tie on	0.00	0.00	0.00	0.00	S 0.00	W 0.00		-0.00
KOP	3035.00	0.00	237.14	3035.00	S 0.00	W 0.00	0.00	-0.00
End of Build	4534.91	45.00	237.14	4385.41	S 303.52	W 469.81	9.84	415.98
End of Hold	9041.07	45.00	237.14	7571.89	S 2032.50	W 3146.08	0.00	2785.59
Target TPZ - ...Sec 13	9654.70	90.00	179.90	7818.00	S 2514.07	W 3352.19	36.09	3304.33
Target Btm Pe...Sec 24	19330.49	90.00	179.90	7818.00	S 12189.84	W 3335.83	0.00	12638.01
End of Turn	19331.00	90.00	179.85	7818.00	S 12190.35	W 3335.83	36.09	12638.50
T.D. & Target BHL... 24	19430.67	90.00	179.85	7818.00	S 12290.02	W 3335.56	0.00	12734.62

