

Great Western Operating Company, LLC

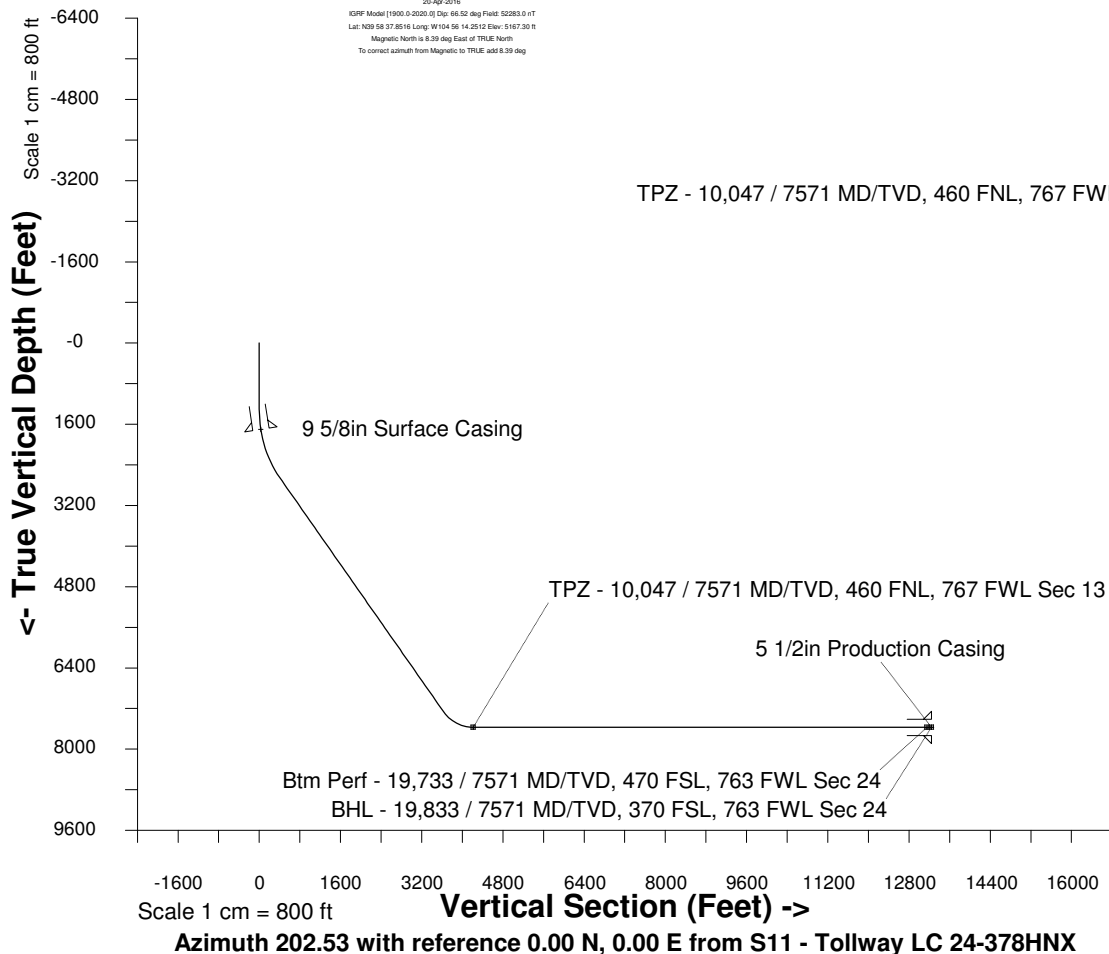
Location Colorado
Field Wattenburg
Installation Tollway
Slot S11 - Tollway LC 24-378HNX
Well Tollway LC 24-378HNX
Wellbore Tollway LC 24-378HNX (PWB)

Scale 1 cm = 500 ft

East (Feet) ->

Created by admin
Date plotted 17-Jan-2018
Plot reference is Tollway LC 24-378HNX (PWB).
Ref wellpath is Tollway LC 24-378HNX (PWP#1).
Coordinates are in Feet reference S11 - Tollway LC 24-378HNX.
True Vertical Depths are reference Rig Datum.
Measured Depths are reference Rig Datum.
Rig Datum: Planned Datum #1
Rig Datum to Mean Sea Level: 5187.30 ft.
Plot North is aligned to TRUE North.

20-Apr-2016
KOPF Model [1900.0-2020.0] Dip: 66.52 deg Field: 52283.0 nT
Lat: N29 58 37.8516 Long: W104 56 14.2512 Elev: 5167.30 ft
Magnetic North is 6.39 deg East of TRUE North
To correct azimuth from Magnetic to TRUE, add 6.39 deg



WELL PROFILE DATA

Point	MD	Inc	Azi	TVD	North	East	deg/100ft	V. Sect
Tie on	0.00	0.00	0.00	0.00	S 0.00	W 0.00		-0.00
KOP	1283.00	0.00	248.12	1283.00	S 0.00	W 0.00	0.00	-0.00
End of Build	2782.91	45.00	248.12	2633.41	S 208.44	W 519.03	9.84	391.42
End of Hold	9366.99	45.00	248.12	7289.29	S 1943.39	W 4839.09	0.00	3649.37
Target TPZ - ...Sec 13	10047.17	90.00	179.86	7571.00	S 2446.75	W 5099.47	36.09	4214.08
Target Btm Pe...Sec 24	19733.18	90.00	179.86	7571.00	S 12132.72	W 5075.10	0.00	13151.35
End of Turn	19733.36	90.00	179.84	7571.00	S 12132.77	W 5075.10	36.09	13151.40
T.D. & Target BHL... 24	19833.13	90.00	179.84	7571.00	S 12232.53	W 5074.84	0.00	13243.45

