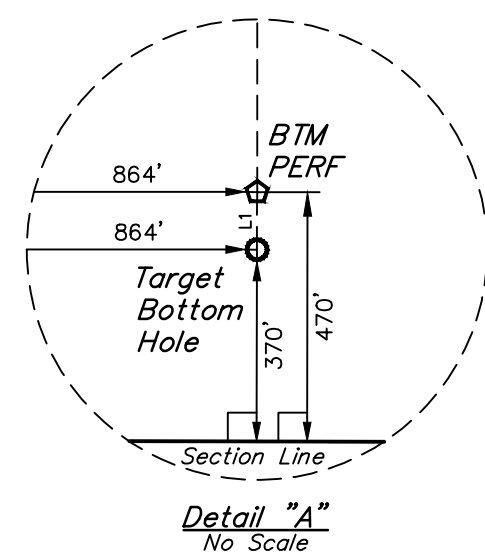
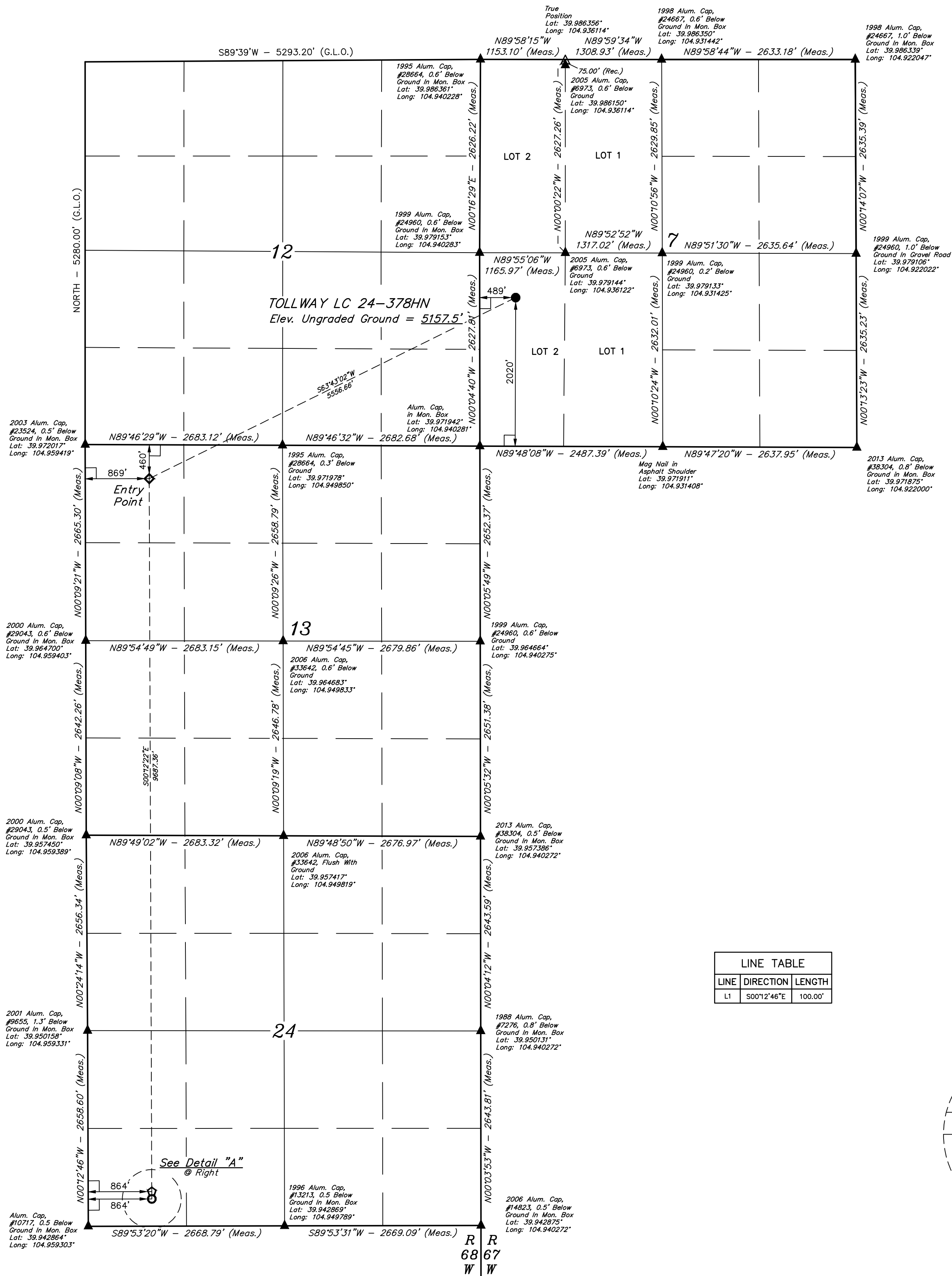
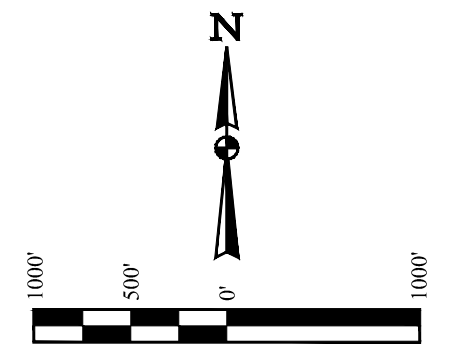


BASIS OF BEARINGS
BASIS OF ELEVATION
BENCHMARK JR 53 5026 LOCATED IN THE SW 1/4 SE 1/4
OF SECTION 18, T1N, R68W, 6th P.M., TAKEN FROM 1988
PUBLISHED DATUM BY THE UNITED STATES DEPARTMENT
OF THE INTERIOR, GEOLOGICAL SURVEY AS BEING 5028 FEET.



CERTIFICATE OF RECORD REGISTRATION
THIS IS TO CERTIFY THAT THE ABOVE DESCRIBED WORK WAS PERFORMED IN ACCORDANCE WITH THE RULES AND REGULATIONS OF THE BOARD OF LAND SURVEYORS OF THE STATE OF COLORADO AND THAT THE SAME ARE TRUE AND CORRECT TO THE BEST OF MY KNOWLEDGE AND BELIEF.

REGISTERED LAND SURVEYOR
REG. NO. 28285
STATE OF COLORADO

REV: 2 01-04-18 K.B. (BP ADD, SL, EP, TBI & NAME CHANGE)

PDOP = 1.5

UINTAH
ENGINEERING & LAND SURVEYING

UELS, LLC
Corporate Office * 85 South 200 East
Vernal, UT 84078 * (435) 789-1017

SURVEYED BY	GREG WEIMER	01-04-18	SCALE
DRAWN BY	L.C.S.	03-29-16	1" = 1000'

WELL LOCATION PLAT

NAD 83 (SURFACE LOCATION)	NAD 83 (ENTRY POINT)	NAD 83 (BTM PERF)	NAD 83 (TARGET BOTTOM HOLE)
LATITUDE = 39°58'38.92" (39.977479)	LATITUDE = 39°58'14.67" (39.970741)	LATITUDE = 39°56'38.96" (39.944155)	LATITUDE = 39°56'37.97" (39.943880)
LONGITUDE = 104°56'18.73" (104.938536)	LONGITUDE = 104°57'22.74" (104.956318)	LONGITUDE = 104°57'22.42" (104.956228)	LONGITUDE = 104°57'22.42" (104.956227)
NAD 27 (SURFACE LOCATION)	NAD 27 (ENTRY POINT)	NAD 27 (BTM PERF)	NAD 27 (TARGET BOTTOM HOLE)
LATITUDE = 39°58'38.98" (39.977495)	LATITUDE = 39°58'14.72" (39.970757)	LATITUDE = 39°56'39.01" (39.944170)	LATITUDE = 39°56'38.02" (39.943895)
LONGITUDE = 104°56'16.81" (104.938003)	LONGITUDE = 104°57'20.82" (104.955784)	LONGITUDE = 104°57'20.50" (104.955694)	LONGITUDE = 104°57'20.49" (104.955693)