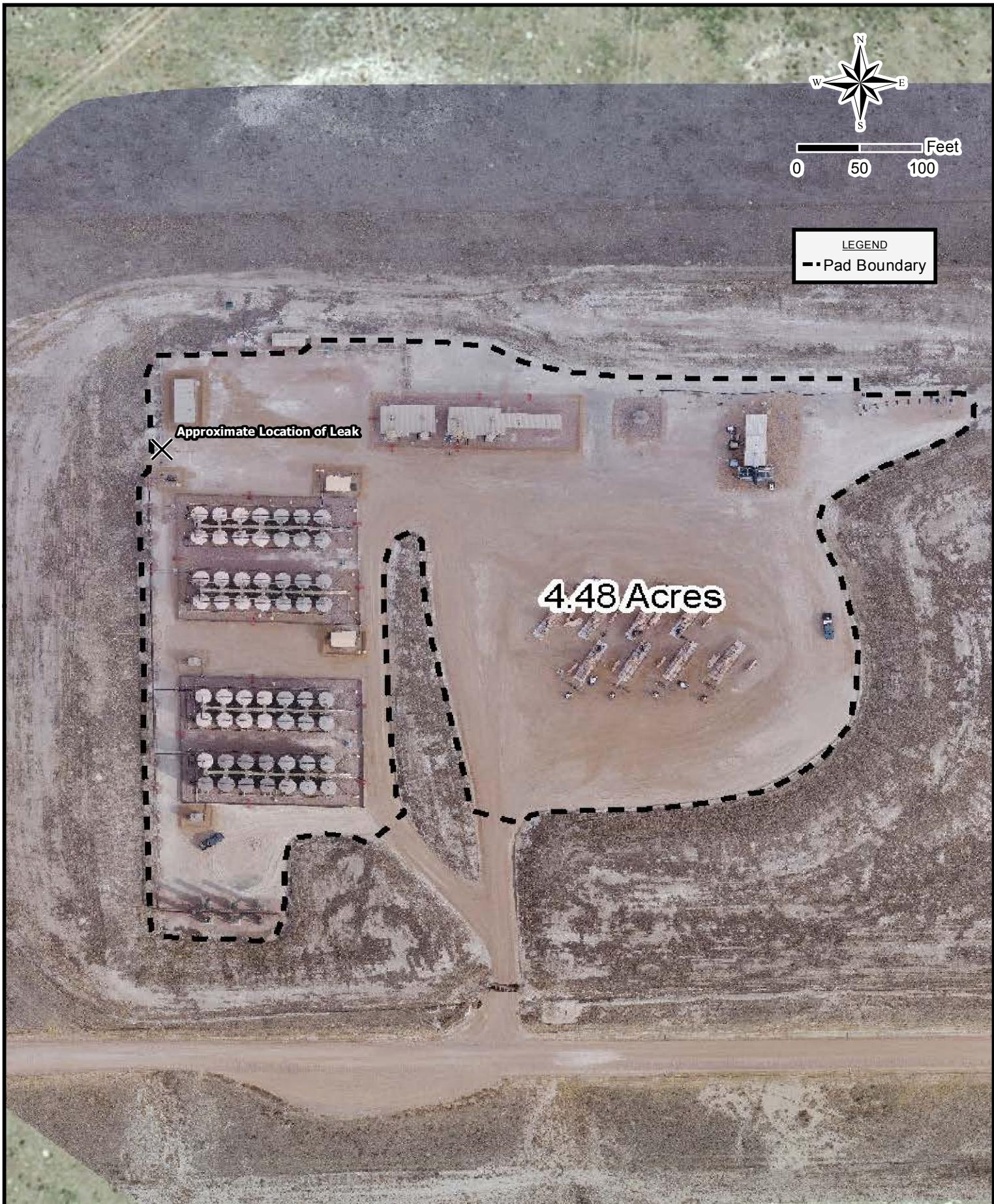


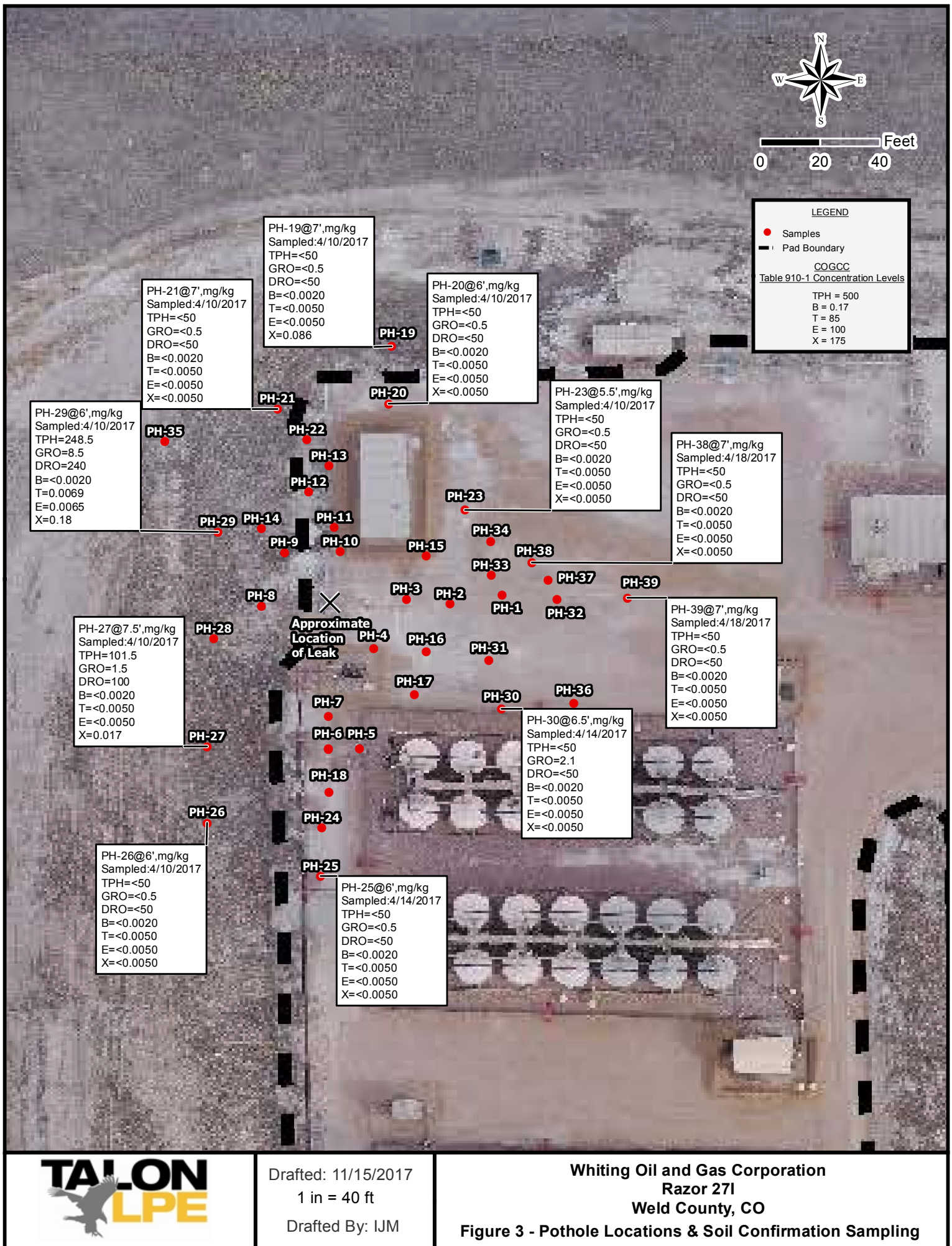
Drafted: 11/10/2017
Map Scale 1:10,000
Drafted By: IJM

Whiting Oil and Gas Corporation
Razor 271
Weld County, CO
Figure 1 - Topographic Map



Drafted: 11/14/2017
1 in = 100 ft
Drafted By: IJM

Whiting Oil and Gas Corporation
Razor 271
Weld County, CO
Figure 2 - Site Plan







Drafted: 12/14/2017
1 in = 100 ft
Drafted By: IJM

Whiting Oil and Gas Corporation
Razor 271
Weld County, CO
Figure 5 - Proposed Extent of Excavation