

Great Western Operating Company, LLC

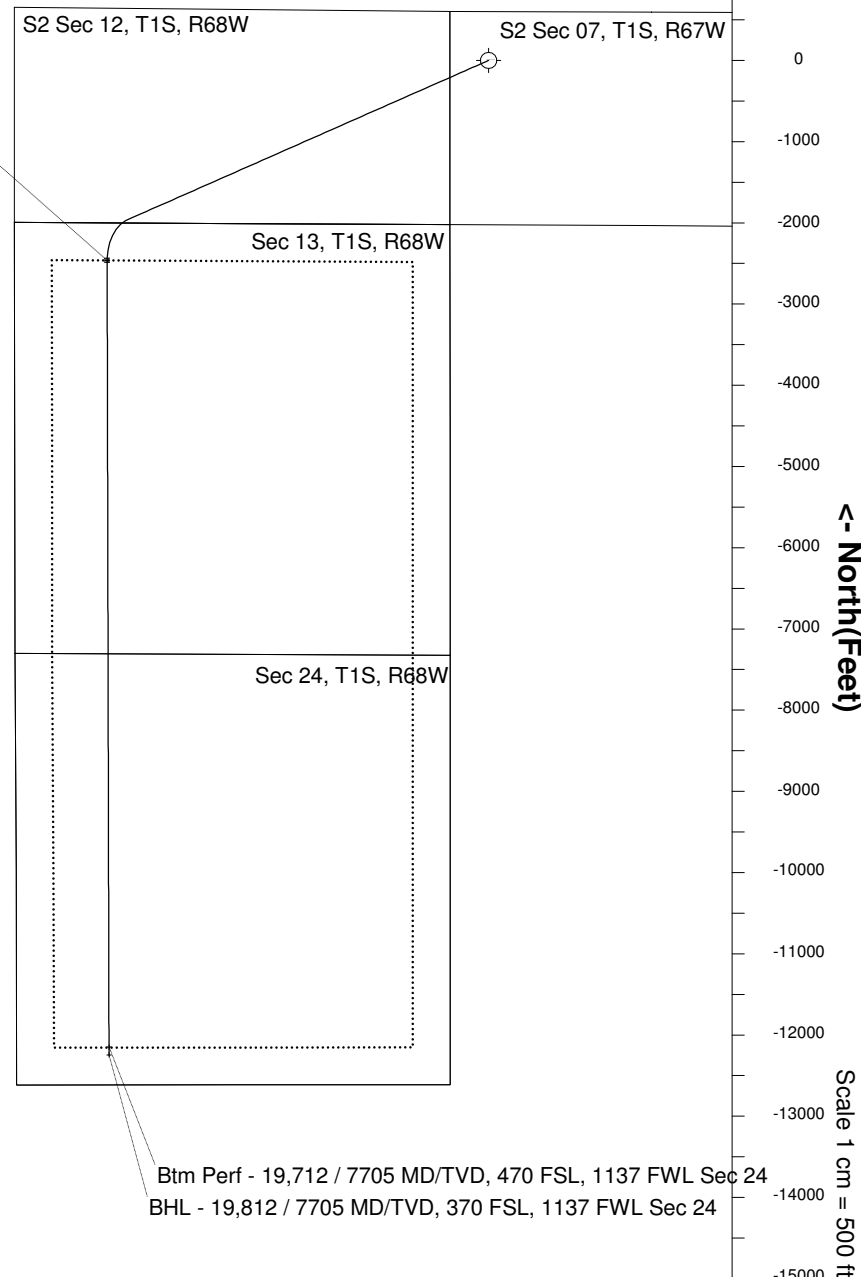
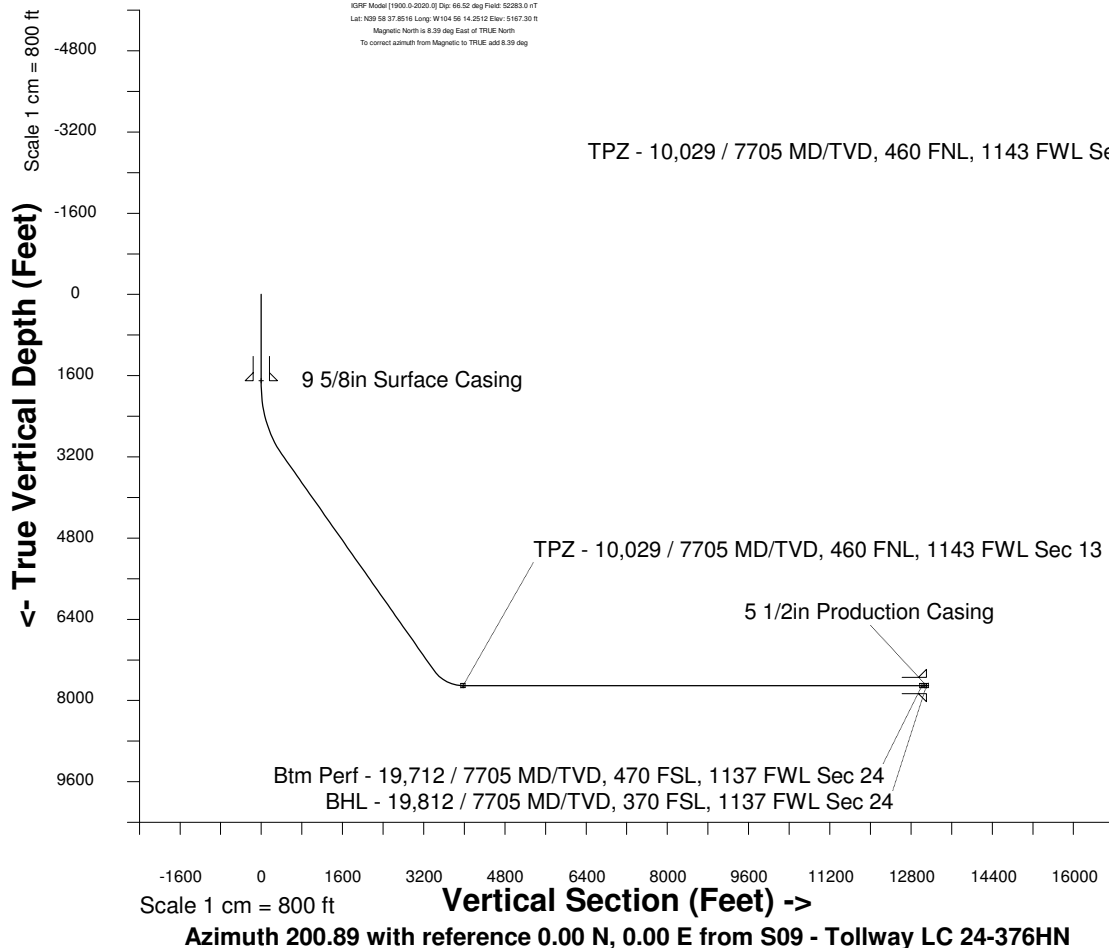
Location Colorado
Field Wattenburg
Installation Tollway
Slot S09 - Tollway LC 24-376HN
Well Tollway LC 24-376HN
Wellbore Tollway LC 24-376HN (PWB)

Created by admin
Date plotted 17-Jan-2018
Plot reference is Tollway LC 24-376HN (PWB).
Ref wellpath is Tollway LC 24-376HN (PWP#1).
Coordinates are in Feet reference S09 - Tollway LC 24-376HN.
True Vertical Depths are reference Rig Datum.
Measured Depths are reference Rig Datum.
Rig Datum: Planned Datum #1
Rig Datum to Mean Sea Level: 5187.30 ft.
Plot North is aligned to TRUE North.

Scale 1 cm = 500 ft
East (Feet) ->

-10000 -9000 -8000 -7000 -6000 -5000 -4000 -3000 -2000 -1000 0 1000 2000 3000

20-Apr-2016
KOPF Model [1900.0-2020.0] Dip: 66.52 deg Field: 52283.0 nT
Lat: N29 58 37.8516 Long: W104 56 14.2512 Elev: 5167.30 ft
Magnetic North is 6.39 deg East of TRUE North
To correct azimuth from Magnetic to TRUE, add 6.39 deg



WELL PROFILE DATA

Point	MD	Inc	Azi	TVD	North	East	deg/100ft	V. Sect
Tie on	0.00	0.00	0.00	0.00	S 0.00	W 0.00		-0.00
KOP	1780.00	0.00	246.19	1780.00	S 0.00	W 0.00	0.00	-0.00
End of Build	3280.12	45.00	246.19	3130.56	S 225.90	W 511.83	9.84	393.57
End of Hold	9360.82	45.00	246.19	7429.99	S 1962.13	W 4445.70	0.00	3418.45
Target TPZ - ...Sec 13	10028.99	90.00	179.87	7705.00	S 2462.13	W 4696.43	36.09	3974.98
Target Btm Pe...Sec 24	19712.44	90.00	179.87	7705.00	S 12145.55	W 4674.14	0.00	13013.86
End of Turn	19712.60	90.00	179.85	7705.00	S 12145.71	W 4674.14	36.09	13014.02
T.D. & Target BHL... 24	19812.25	90.00	179.85	7705.00	S 12245.36	W 4673.88	0.00	13107.02