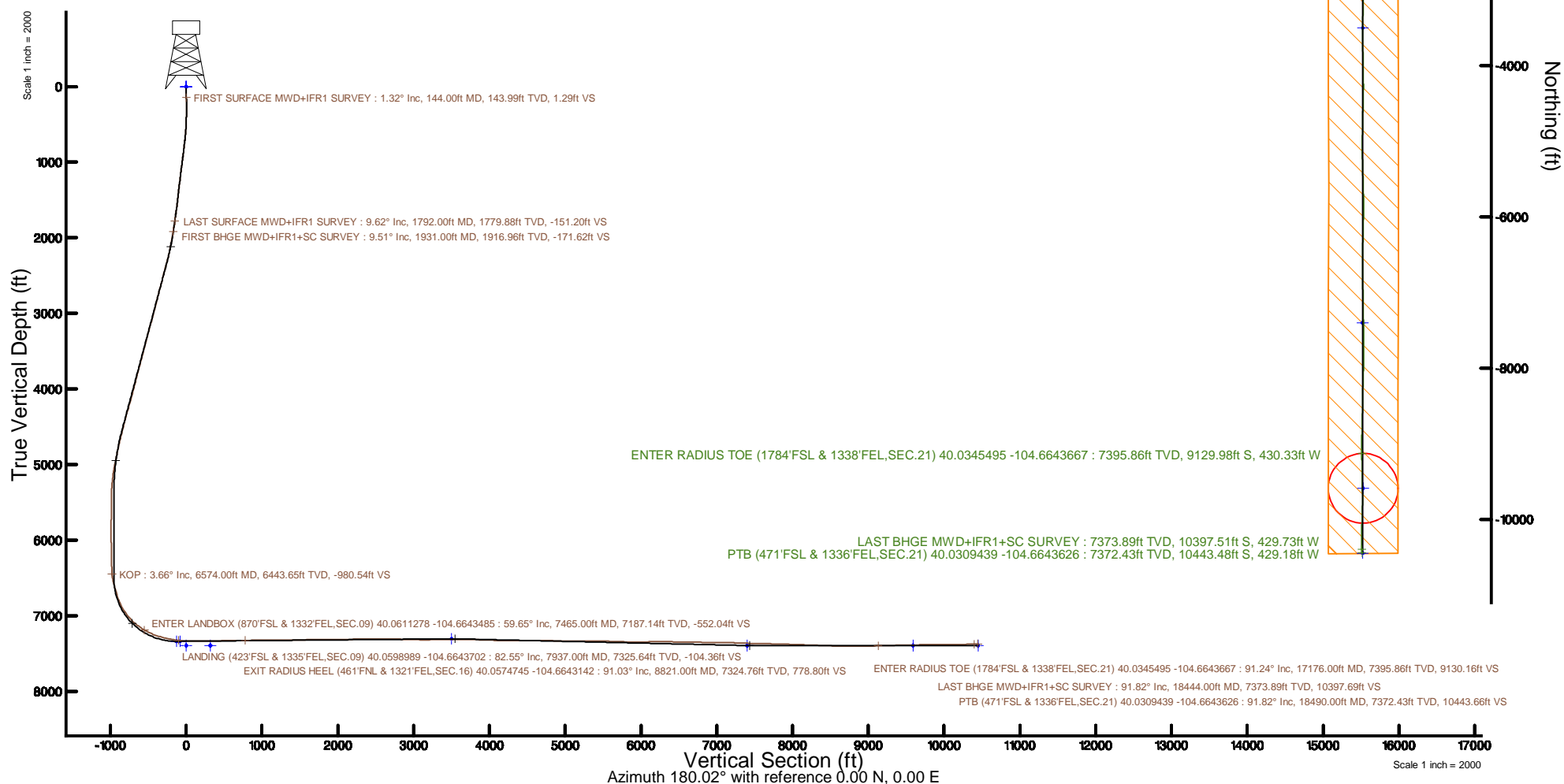


Location:	COLORADO	Slot:	SLOT#28 ROBIN 9-14HZ(318FSL & 904FEL,SEC.09)
Field:	WELD COUNTY (UTM/TRUE NORTH)	Well:	ROBIN 9-14HZ
Facility:	SEC.09-T1N-R65W	Wellbore:	ROBIN 9-14HZ PWB
Plot reference wellpath is ROBIN 9-14HZ PWB Rev-A-0		Grid System: NAD83 / UTM Zone 13 North, US feet	
True vertical depths are referenced to NABORS X22 (32) (RT)		* = Wellpath was transformed from a different geodetic datum	
Measured depths are referenced to NABORS X22 (32) (RT)		North Reference: True north	
NABORS X22 (32) (RT) to Mean Sea Level: 5006 feet		Scale: True distance	
Mean Sea Level to Mud line (At Slot: SLOT#28 ROBIN 9-14HZ(318FSL & 904FEL,SEC.09)): 0 feet		Depths are in feet	
Coordinates are in feet referenced to Slot		Created by: painseir on 2017-11-30	
		Database: WA DEN Anadarko Defn	



REFERENCE WELLPATH IDENTIFICATION			
Operator	KERR-MCGEE OIL & GAS ONSHORE LP (WA)	Slot	SLOT#28 ROBIN 9-14HZ(318'FSL & 904'FEL,SEC.09)
Area	COLORADO	Well	ROBIN 9-14HZ
Field	WELD COUNTY (UTM/TRUE NORTH)	Wellbore	ROBIN 9-14HZ AWB
Facility	SEC.09-T1N-R65W		

REPORT SETUP INFORMATION			
Projection System	NAD83 / UTM Zone 13 North, US feet	Software System	WellArchitect® 5.0
North Reference	True	User	Painsetr
Scale	0.999610	Report Generated	11/30/2017 at 12:33 PM
Convergence at slot	0.22° East	Database/Source file	WA_DEN_Anadarko_Defn/ROBIN_9-14HZ_AWP.xml

WELLPATH LOCATION						
	Local coordinates		Grid coordinates		Geographic coordinates	
	North[ft]	East[ft]	Easting[US ft]	Northing[US ft]	Latitude	Longitude
Slot Location	-4439.73	3706.14	1734759.38	14548619.36	40°03'34.603"N	104°39'46.188"W
Facility Reference Pt			1731038.57	14553043.83	40°04'18.480"N	104°40'33.852"W
Field Reference Pt			1698235.31	14552047.82	40°04'09.600"N	104°47'36.000"W

WELLPATH DATUM			
Calculation method	Minimum curvature	NABORS X22 (32') (RT) to Facility Vertical Datum	5006.00ft
Horizontal Reference Pt	Slot	NABORS X22 (32') (RT) to Mean Sea Level	5006.00ft
Vertical Reference Pt	NABORS X22 (32') (RT)	NABORS X22 (32') (RT) to Mud Line at Slot (SLOT#28 ROBIN 9-14HZ(318'FSL & 904'FEL,SEC.09))	5006.00ft
MD Reference Pt	NABORS X22 (32') (RT)	Section Origin	N 0.00, E 0.00 ft
Field Vertical Reference	Mean Sea Level	Section Azimuth	180.02°

REFERENCE WELLPATH IDENTIFICATION			
Operator	KERR-MCGEE OIL & GAS ONSHORE LP (WA)	Slot	SLOT#28 ROBIN 9-14HZ(318'FSL & 904'FEL,SEC.09)
Area	COLORADO	Well	ROBIN 9-14HZ
Field	WELD COUNTY (UTM/TRUE NORTH)	Wellbore	ROBIN 9-14HZ AWB
Facility	SEC.09-T1N-R65W		

WELLPATH DATA (236 stations) † = interpolated/extrapolated station												
MD [ft]	Inclination [°]	Azimuth [°]	TVD [ft]	Vert Sect [ft]	North [ft]	East [ft]	Grid East [US ft]	Grid North [US ft]	Latitude	Longitude	DLS [°/100ft]	Comments
0.00†	0.000	182.650	0.00	0.00	0.00	0.00	1734759.38	14548619.36	40°03'34.603"N	104°39'46.188"W	0.00	
32.00	0.000	182.650	32.00	0.00	0.00	0.00	1734759.38	14548619.36	40°03'34.603"N	104°39'46.188"W	0.00	
144.00	1.320	182.650	143.99	1.29	-1.29	-0.06	1734759.32	14548618.07	40°03'34.590"N	104°39'46.189"W	1.18	FIRST SURFACE MWD+IFR1 SURVEY
176.00	1.050	186.520	175.98	1.95	-1.95	-0.11	1734759.28	14548617.41	40°03'34.584"N	104°39'46.189"W	0.88	
207.00	0.530	195.040	206.98	2.37	-2.37	-0.18	1734759.21	14548616.99	40°03'34.580"N	104°39'46.190"W	1.72	
239.00	0.530	212.970	238.98	2.64	-2.64	-0.30	1734759.09	14548616.72	40°03'34.577"N	104°39'46.192"W	0.52	
270.00	0.400	197.150	269.98	2.86	-2.86	-0.41	1734758.98	14548616.50	40°03'34.575"N	104°39'46.193"W	0.59	
302.00	0.260	278.100	301.98	2.96	-2.96	-0.51	1734758.88	14548616.40	40°03'34.574"N	104°39'46.195"W	1.38	
333.00	1.010	313.960	332.98	2.76	-2.76	-0.78	1734758.61	14548616.60	40°03'34.576"N	104°39'46.198"W	2.62	
365.00	1.270	303.410	364.97	2.37	-2.37	-1.28	1734758.11	14548616.99	40°03'34.580"N	104°39'46.204"W	1.04	
396.00	1.850	310.000	395.96	1.86	-1.85	-1.95	1734757.44	14548617.50	40°03'34.585"N	104°39'46.213"W	1.96	
428.00	2.420	317.910	427.94	1.02	-1.02	-2.80	1734756.59	14548618.33	40°03'34.593"N	104°39'46.224"W	2.00	
459.00	2.770	322.840	458.90	-0.06	0.06	-3.69	1734755.69	14548619.41	40°03'34.604"N	104°39'46.235"W	1.34	
491.00	2.810	327.410	490.87	-1.34	1.34	-4.58	1734754.80	14548620.68	40°03'34.616"N	104°39'46.247"W	0.71	
522.00	3.600	325.120	521.82	-2.77	2.78	-5.54	1734753.83	14548622.11	40°03'34.630"N	104°39'46.259"W	2.58	
554.00	4.090	326.700	553.74	-4.55	4.56	-6.74	1734752.62	14548623.89	40°03'34.648"N	104°39'46.275"W	1.57	
586.00	4.700	331.010	585.65	-6.65	6.66	-8.01	1734751.35	14548625.98	40°03'34.669"N	104°39'46.291"W	2.17	
618.00	5.360	330.750	617.53	-9.10	9.11	-9.37	1734749.97	14548628.43	40°03'34.693"N	104°39'46.309"W	2.06	
681.00	6.640	333.380	680.18	-14.93	14.93	-12.44	1734746.88	14548634.24	40°03'34.751"N	104°39'46.348"W	2.08	
713.00	7.030	332.860	711.95	-18.32	18.33	-14.16	1734745.15	14548637.62	40°03'34.784"N	104°39'46.370"W	1.23	
745.00	7.290	331.010	743.70	-21.84	21.85	-16.04	1734743.26	14548641.13	40°03'34.819"N	104°39'46.394"W	1.09	
777.00	7.780	330.130	775.43	-25.49	25.50	-18.10	1734741.18	14548644.78	40°03'34.855"N	104°39'46.421"W	1.57	
808.00	8.090	331.710	806.13	-29.23	29.24	-20.18	1734739.09	14548648.51	40°03'34.892"N	104°39'46.448"W	1.22	
840.00	8.350	329.600	837.80	-33.22	33.23	-22.43	1734736.83	14548652.49	40°03'34.931"N	104°39'46.476"W	1.24	
872.00	8.310	328.020	869.46	-37.18	37.19	-24.83	1734734.42	14548656.44	40°03'34.971"N	104°39'46.507"W	0.73	
904.00	8.350	327.320	901.13	-41.10	41.11	-27.31	1734731.93	14548660.35	40°03'35.009"N	104°39'46.539"W	0.34	
935.00	8.570	327.930	931.79	-44.95	44.96	-29.75	1734729.47	14548664.19	40°03'35.047"N	104°39'46.571"W	0.77	
967.00	8.830	330.220	963.42	-49.10	49.11	-32.23	1734726.97	14548668.33	40°03'35.088"N	104°39'46.603"W	1.35	
999.00	8.830	331.360	995.04	-53.39	53.40	-34.63	1734724.56	14548672.61	40°03'35.131"N	104°39'46.633"W	0.55	
1031.00	9.140	330.570	1026.65	-57.75	57.77	-37.06	1734722.12	14548676.97	40°03'35.174"N	104°39'46.665"W	1.04	
1062.00	9.180	330.660	1057.25	-62.05	62.07	-39.48	1734719.68	14548681.25	40°03'35.216"N	104°39'46.696"W	0.14	
1094.00	8.000	329.870	1088.89	-66.20	66.22	-41.85	1734717.30	14548685.39	40°03'35.257"N	104°39'46.726"W	3.71	
1126.00	7.730	332.060	1120.59	-70.03	70.05	-43.97	1734715.16	14548689.21	40°03'35.295"N	104°39'46.754"W	1.26	
1157.00	7.470	330.130	1151.32	-73.62	73.64	-45.95	1734713.16	14548692.79	40°03'35.331"N	104°39'46.779"W	1.18	
1189.00	7.560	331.100	1183.05	-77.26	77.28	-48.01	1734711.10	14548696.43	40°03'35.367"N	104°39'46.805"W	0.49	
1221.00	7.690	332.420	1214.76	-81.00	81.02	-50.02	1734709.08	14548700.16	40°03'35.404"N	104°39'46.831"W	0.68	
1253.00	7.290	334.440	1246.49	-84.73	84.75	-51.88	1734707.20	14548703.88	40°03'35.441"N	104°39'46.855"W	1.50	
1285.00	7.380	333.650	1278.23	-88.40	88.43	-53.67	1734705.39	14548707.55	40°03'35.477"N	104°39'46.878"W	0.42	
1317.00	7.430	332.940	1309.96	-92.09	92.11	-55.52	1734703.53	14548711.22	40°03'35.513"N	104°39'46.902"W	0.33	
1348.00	7.340	331.540	1340.70	-95.61	95.64	-57.38	1734701.66	14548714.74	40°03'35.548"N	104°39'46.926"W	0.65	
1380.00	7.510	331.270	1372.44	-99.24	99.27	-59.36	1734699.67	14548718.36	40°03'35.584"N	104°39'46.951"W	0.54	
1412.00	7.690	330.310	1404.16	-102.94	102.96	-61.42	1734697.59	14548722.05	40°03'35.620"N	104°39'46.978"W	0.69	
1443.00	7.780	330.920	1434.87	-106.57	106.60	-63.47	1734695.53	14548725.67	40°03'35.656"N	104°39'47.004"W	0.39	
1475.00	7.910	329.870	1466.57	-110.37	110.39	-65.63	1734693.36	14548729.46	40°03'35.694"N	104°39'47.032"W	0.60	
1507.00	7.950	329.960	1498.27	-114.19	114.21	-67.84	1734691.13	14548733.27	40°03'35.732"N	104°39'47.061"W	0.13	

REFERENCE WELLPATH IDENTIFICATION			
Operator	KERR-MCGEE OIL & GAS ONSHORE LP (WA)	Slot	SLOT#28 ROBIN 9-14HZ(318'FSL & 904'FEL,SEC.09)
Area	COLORADO	Well	ROBIN 9-14HZ
Field	WELD COUNTY (UTM/TRUE NORTH)	Wellbore	ROBIN 9-14HZ AWB
Facility	SEC.09-T1N-R65W		

WELLPATH DATA (236 stations)												
MD [ft]	Inclination [°]	Azimuth [°]	TVD [ft]	Vert Sect [ft]	North [ft]	East [ft]	Grid East [US ft]	Grid North [US ft]	Latitude	Longitude	DLS [°/100ft]	Comments
1538.00	8.090	331.980	1528.96	-117.97	118.00	-69.94	1734689.02	14548737.04	40°03'35.769"N	104°39'47.087"W	1.02	
1570.00	8.220	328.480	1560.64	-121.90	121.93	-72.19	1734686.75	14548740.97	40°03'35.808"N	104°39'47.116"W	1.60	
1633.00	8.660	329.340	1622.96	-129.82	129.85	-76.97	1734681.95	14548748.87	40°03'35.886"N	104°39'47.178"W	0.73	
1665.00	9.010	325.560	1654.58	-133.96	133.99	-79.61	1734679.29	14548753.00	40°03'35.927"N	104°39'47.212"W	2.12	
1697.00	9.050	325.560	1686.18	-138.10	138.13	-82.45	1734676.43	14548757.13	40°03'35.968"N	104°39'47.248"W	0.12	
1729.00	9.580	325.300	1717.76	-142.36	142.40	-85.39	1734673.48	14548761.38	40°03'36.010"N	104°39'47.286"W	1.66	
1760.00	9.580	328.370	1748.33	-146.68	146.72	-88.21	1734670.64	14548765.68	40°03'36.053"N	104°39'47.323"W	1.65	
1792.00	9.620	327.320	1779.88	-151.20	151.23	-91.05	1734667.79	14548770.19	40°03'36.098"N	104°39'47.359"W	0.56	LAST SURFACE MWD+IFR1 SURVEY
1931.00	9.510	338.000	1916.96	-171.62	171.66	-101.63	1734657.14	14548790.56	40°03'36.299"N	104°39'47.495"W	1.28	FIRST BHGE MWD+IFR1+SC SURVEY
2024.00	11.650	337.350	2008.37	-187.40	187.45	-108.12	1734650.59	14548806.32	40°03'36.455"N	104°39'47.579"W	2.30	
2119.00	11.880	335.300	2101.38	-205.14	205.18	-115.90	1734642.74	14548824.02	40°03'36.631"N	104°39'47.679"W	0.50	
2212.00	13.730	336.310	2192.06	-223.94	223.99	-124.34	1734634.24	14548842.79	40°03'36.817"N	104°39'47.787"W	2.00	
2306.00	15.220	339.960	2283.08	-245.74	245.80	-133.05	1734625.45	14548864.56	40°03'37.032"N	104°39'47.899"W	1.86	
2399.00	17.210	333.110	2372.38	-269.48	269.54	-143.46	1734614.96	14548888.25	40°03'37.267"N	104°39'48.033"W	2.96	
2492.00	16.340	332.070	2461.42	-293.31	293.37	-155.81	1734602.52	14548912.02	40°03'37.502"N	104°39'48.192"W	0.99	
2587.00	15.480	331.680	2552.78	-316.27	316.34	-168.08	1734590.17	14548934.94	40°03'37.729"N	104°39'48.350"W	0.91	
2681.00	17.660	332.860	2642.87	-340.00	340.07	-180.54	1734577.63	14548958.61	40°03'37.964"N	104°39'48.510"W	2.35	
2775.00	16.120	331.360	2732.82	-364.14	364.22	-193.30	1734564.78	14548982.70	40°03'38.202"N	104°39'48.674"W	1.70	
2869.00	15.700	329.910	2823.22	-386.59	386.67	-205.93	1734552.07	14549005.10	40°03'38.424"N	104°39'48.836"W	0.62	
2962.00	15.230	339.840	2912.86	-408.94	409.03	-216.45	1734541.47	14549027.41	40°03'38.645"N	104°39'48.972"W	2.89	
3057.00	15.370	337.130	3004.50	-432.25	432.35	-225.64	1734532.19	14549050.68	40°03'38.876"N	104°39'49.090"W	0.77	
3150.00	17.810	338.530	3093.62	-456.84	456.94	-235.64	1734522.10	14549075.23	40°03'39.119"N	104°39'49.219"W	2.66	
3245.00	16.340	336.680	3184.43	-482.63	482.74	-246.25	1734511.40	14549100.97	40°03'39.373"N	104°39'49.355"W	1.65	
3339.00	16.550	339.030	3274.59	-507.27	507.38	-256.27	1734501.29	14549125.57	40°03'39.617"N	104°39'49.484"W	0.74	
3432.00	14.930	335.620	3364.10	-530.55	530.66	-265.96	1734491.51	14549148.80	40°03'39.847"N	104°39'49.609"W	2.01	
3526.00	15.190	337.970	3454.87	-552.99	553.11	-275.58	1734481.82	14549171.20	40°03'40.069"N	104°39'49.732"W	0.71	
3620.00	15.660	338.420	3545.48	-576.20	576.32	-284.86	1734472.45	14549194.37	40°03'40.298"N	104°39'49.852"W	0.52	
3714.00	16.080	344.430	3635.91	-600.54	600.66	-293.02	1734464.20	14549218.67	40°03'40.539"N	104°39'49.957"W	1.80	
3808.00	15.860	341.100	3726.28	-625.23	625.35	-300.68	1734456.45	14549243.32	40°03'40.783"N	104°39'50.055"W	1.00	
3901.00	15.590	335.240	3815.81	-648.60	648.73	-310.03	1734447.02	14549266.65	40°03'41.014"N	104°39'50.175"W	1.73	
3995.00	15.550	332.330	3906.36	-671.22	671.35	-321.17	1734435.79	14549289.23	40°03'41.237"N	104°39'50.319"W	0.83	
4089.00	15.130	336.440	3997.01	-693.62	693.76	-331.93	1734424.96	14549311.58	40°03'41.459"N	104°39'50.457"W	1.24	
4184.00	16.080	338.920	4088.51	-717.26	717.40	-341.61	1734415.18	14549335.18	40°03'41.692"N	104°39'50.582"W	1.22	
4279.00	16.750	343.660	4179.64	-742.67	742.81	-350.20	1734406.51	14549360.55	40°03'41.944"N	104°39'50.692"W	1.58	
4372.00	17.430	344.090	4268.53	-768.92	769.07	-357.79	1734398.82	14549386.77	40°03'42.203"N	104°39'50.790"W	0.74	
4493.00	15.470	339.820	4384.58	-801.49	801.65	-368.32	1734388.17	14549419.29	40°03'42.525"N	104°39'50.925"W	1.90	
4587.00	14.770	336.910	4475.33	-824.28	824.44	-377.35	1734379.06	14549442.04	40°03'42.750"N	104°39'51.041"W	1.10	
4681.00	15.590	341.550	4566.05	-847.28	847.44	-386.04	1734370.28	14549465.00	40°03'42.978"N	104°39'51.153"W	1.56	
4775.00	14.330	339.980	4656.86	-870.19	870.36	-394.02	1734362.22	14549487.88	40°03'43.204"N	104°39'51.256"W	1.41	
4869.00	13.190	338.220	4748.16	-891.08	891.25	-401.99	1734354.18	14549508.73	40°03'43.410"N	104°39'51.358"W	1.29	
4963.00	12.870	337.930	4839.74	-910.74	910.91	-409.90	1734346.19	14549528.35	40°03'43.605"N	104°39'51.460"W	0.35	
5058.00	12.300	336.470	4932.46	-929.81	929.99	-417.91	1734338.11	14549547.40	40°03'43.793"N	104°39'51.563"W	0.69	
5152.00	11.580	347.840	5024.44	-948.22	948.40	-423.90	1734332.06	14549565.77	40°03'43.975"N	104°39'51.640"W	2.61	
5246.00	8.000	348.710	5117.06	-963.86	964.04	-427.17	1734328.73	14549581.39	40°03'44.130"N	104°39'51.682"W	3.81	
5340.00	5.750	353.680	5210.37	-974.95	975.13	-428.97	1734326.89	14549592.48	40°03'44.239"N	104°39'51.705"W	2.47	

REFERENCE WELLPATH IDENTIFICATION			
Operator	KERR-MCGEE OIL & GAS ONSHORE LP (WA)	Slot	SLOT#28 ROBIN 9-14HZ(318'FSL & 904'FEL,SEC.09)
Area	COLORADO	Well	ROBIN 9-14HZ
Field	WELD COUNTY (UTM/TRUE NORTH)	Wellbore	ROBIN 9-14HZ AWB
Facility	SEC.09-T1N-R65W		

WELLPATH DATA (236 stations) † = interpolated/extrapolated station												
MD [ft]	Inclination [°]	Azimuth [°]	TVD [ft]	Vert Sect [ft]	North [ft]	East [ft]	Grid East [US ft]	Grid North [US ft]	Latitude	Longitude	DLS [°/100ft]	Comments
5434.00	4.400	359.140	5304.00	-983.24	983.42	-429.54	1734326.29	14549600.76	40°03'44.321"N	104°39'51.712"W	1.52	
5528.00	1.920	33.260	5397.86	-988.16	988.34	-428.73	1734327.08	14549605.68	40°03'44.370"N	104°39'51.702"W	3.20	
5621.00	0.800	261.380	5490.85	-989.37	989.55	-428.52	1734327.28	14549606.89	40°03'44.382"N	104°39'51.699"W	2.72	
5715.00	0.800	282.570	5584.84	-989.41	989.59	-429.81	1734326.00	14549606.93	40°03'44.382"N	104°39'51.716"W	0.31	
5809.00	0.650	298.370	5678.83	-989.81	989.99	-430.92	1734324.88	14549607.32	40°03'44.386"N	104°39'51.730"W	0.26	
5902.00	0.670	315.920	5771.82	-990.45	990.63	-431.76	1734324.04	14549607.96	40°03'44.393"N	104°39'51.741"W	0.22	
5995.00	0.830	336.710	5864.81	-991.46	991.64	-432.40	1734323.39	14549608.97	40°03'44.403"N	104°39'51.749"W	0.34	
6089.00	1.160	209.960	5958.81	-991.26	991.44	-433.15	1734322.65	14549608.76	40°03'44.401"N	104°39'51.759"W	1.90	
6183.00	1.420	214.040	6052.78	-989.47	989.65	-434.28	1734321.53	14549606.97	40°03'44.383"N	104°39'51.773"W	0.29	
6277.00	1.310	224.180	6146.76	-987.73	987.92	-435.68	1734320.13	14549605.23	40°03'44.366"N	104°39'51.791"W	0.28	
6370.00	1.260	216.750	6239.73	-986.15	986.33	-437.03	1734318.79	14549603.65	40°03'44.350"N	104°39'51.809"W	0.19	
6465.00	1.570	188.960	6334.71	-984.03	984.21	-437.86	1734317.97	14549601.52	40°03'44.329"N	104°39'51.819"W	0.78	
6559.00	1.850	170.900	6428.66	-981.26	981.44	-437.82	1734318.02	14549598.75	40°03'44.302"N	104°39'51.819"W	0.64	
6574.00†	3.661	173.636	6443.65	-980.54	980.73	-437.73	1734318.11	14549598.04	40°03'44.295"N	104°39'51.818"W	12.10	KOP
6653.00	13.220	175.660	6521.70	-969.00	969.19	-436.76	1734319.12	14549586.50	40°03'44.181"N	104°39'51.805"W	12.10	
6748.00	15.880	176.130	6613.65	-945.20	945.38	-435.06	1734320.91	14549562.72	40°03'43.945"N	104°39'51.783"W	2.80	
6842.00	16.240	183.430	6703.99	-919.25	919.43	-434.98	1734321.09	14549536.77	40°03'43.689"N	104°39'51.782"W	2.18	
6936.00	20.460	177.530	6793.19	-889.70	889.88	-435.06	1734321.12	14549507.23	40°03'43.397"N	104°39'51.783"W	4.90	
7029.00	27.740	180.620	6878.03	-851.76	851.94	-434.59	1734321.73	14549469.32	40°03'43.022"N	104°39'51.777"W	7.94	
7123.00	36.150	179.770	6957.73	-802.07	802.25	-434.72	1734321.80	14549419.65	40°03'42.531"N	104°39'51.779"W	8.96	
7217.00	41.710	176.420	7030.83	-743.08	743.26	-432.65	1734324.09	14549360.69	40°03'41.948"N	104°39'51.752"W	6.32	
7311.00	48.590	176.920	7097.08	-676.60	676.77	-428.80	1734328.19	14549294.24	40°03'41.291"N	104°39'51.703"W	7.33	
7405.00	55.400	178.500	7154.93	-602.63	602.81	-425.89	1734331.38	14549220.32	40°03'40.560"N	104°39'51.665"W	7.36	
7465.00†	59.649	179.571	7187.14	-552.04	552.21	-425.05	1734332.41	14549169.74	40°03'40.060"N	104°39'51.655"W	7.24	ENTER LANDBOX (870'FSL & 1332'FEL,SEC.09) 40.0611278 -104.6643485
7498.00	61.990	180.120	7203.23	-523.23	523.40	-424.97	1734332.59	14549140.95	40°03'39.775"N	104°39'51.654"W	7.24	
7591.00	66.900	178.540	7243.34	-439.36	439.54	-423.97	1734333.91	14549057.12	40°03'38.947"N	104°39'51.641"W	5.50	
7685.00	74.370	179.430	7274.48	-350.76	350.93	-422.41	1734335.80	14548968.55	40°03'38.071"N	104°39'51.621"W	8.00	
7779.00	77.870	182.830	7297.04	-259.55	259.73	-424.23	1734334.33	14548877.37	40°03'37.170"N	104°39'51.644"W	5.12	
7874.00	79.400	183.080	7315.76	-166.54	166.71	-429.04	1734329.88	14548784.38	40°03'36.250"N	104°39'51.706"W	1.63	
7937.00†	82.554	180.793	7325.64	-104.36	104.54	-431.13	1734328.02	14548722.23	40°03'35.636"N	104°39'51.733"W	6.16	LANDING (423'FSL & 1335'FEL,SEC.09) 40.0598989 -104.6643702
7968.00	84.110	179.680	7329.24	-73.57	73.75	-431.26	1734328.01	14548691.45	40°03'35.332"N	104°39'51.734"W	6.16	
8061.00	90.280	177.470	7333.79	19.24	-19.06	-428.94	1734330.68	14548598.69	40°03'34.415"N	104°39'51.705"W	7.05	
8155.00	90.550	177.030	7333.11	113.12	-112.94	-424.44	1734335.54	14548504.85	40°03'33.487"N	104°39'51.647"W	0.55	
8248.00	91.080	176.360	7331.78	205.96	-205.78	-419.07	1734341.25	14548412.07	40°03'32.569"N	104°39'51.578"W	0.92	
8343.00	90.280	178.840	7330.66	300.86	-300.68	-415.10	1734345.59	14548317.23	40°03'31.632"N	104°39'51.526"W	2.74	
8437.00	90.250	180.250	7330.22	394.85	-394.68	-414.35	1734346.69	14548223.27	40°03'30.703"N	104°39'51.517"W	1.50	
8531.00	90.650	180.250	7329.48	488.84	-488.67	-414.76	1734346.63	14548129.31	40°03'29.774"N	104°39'51.522"W	0.43	
8625.00	90.920	180.210	7328.19	582.84	-582.66	-415.14	1734346.61	14548035.36	40°03'28.845"N	104°39'51.527"W	0.29	
8719.00	91.050	180.320	7326.58	676.82	-676.65	-415.57	1734346.53	14547941.41	40°03'27.916"N	104°39'51.532"W	0.18	
8812.00	90.990	179.640	7324.92	769.81	-769.63	-415.54	1734346.92	14547848.46	40°03'26.997"N	104°39'51.532"W	0.73	
8821.00†	91.028	179.601	7324.76	778.80	-778.63	-415.48	1734347.01	14547839.47	40°03'26.908"N	104°39'51.531"W	0.61	EXIT RADIUS HEEL (461'FNL & 1321'FEL,SEC.16) 40.0574745 -104.6643142
8906.00	91.390	179.230	7322.97	863.78	-863.61	-414.61	1734348.20	14547754.53	40°03'26.069"N	104°39'51.520"W	0.61	
9000.00	90.770	180.470	7321.20	957.76	-957.59	-414.37	1734348.80	14547660.59	40°03'25.140"N	104°39'51.517"W	1.47	
9094.00	90.340	180.430	7320.29	1051.75	-1051.58	-415.11	1734348.42	14547566.63	40°03'24.211"N	104°39'51.526"W	0.46	
9189.00	90.120	179.400	7319.91	1146.75	-1146.58	-414.96	1734348.92	14547471.67	40°03'23.272"N	104°39'51.525"W	1.11	

REFERENCE WELLPATH IDENTIFICATION			
Operator	KERR-MCGEE OIL & GAS ONSHORE LP (WA)	Slot	SLOT#28 ROBIN 9-14HZ(318'FSL & 904'FEL,SEC.09)
Area	COLORADO	Well	ROBIN 9-14HZ
Field	WELD COUNTY (UTM/TRUE NORTH)	Wellbore	ROBIN 9-14HZ AWB
Facility	SEC.09-T1N-R65W		

WELLPATH DATA (236 stations)												
MD [ft]	Inclination [°]	Azimuth [°]	TVD [ft]	Vert Sect [ft]	North [ft]	East [ft]	Grid East [US ft]	Grid North [US ft]	Latitude	Longitude	DLS [°/100ft]	Comments
9283.00	90.180	178.300	7319.66	1240.73	-1240.56	-413.08	1734351.16	14547377.73	40°03'22.344"N	104°39'51.500"W	1.17	
9377.00	90.150	176.830	7319.39	1334.64	-1334.47	-409.08	1734355.51	14547283.87	40°03'21.415"N	104°39'51.449"W	1.56	
9471.00	90.800	177.130	7318.61	1428.50	-1428.33	-404.13	1734360.81	14547190.06	40°03'20.488"N	104°39'51.385"W	0.76	
9565.00	90.680	178.320	7317.40	1522.42	-1522.25	-400.40	1734364.90	14547096.20	40°03'19.560"N	104°39'51.337"W	1.27	
9659.00	92.060	180.870	7315.15	1616.38	-1616.21	-399.74	1734365.92	14547002.28	40°03'18.631"N	104°39'51.329"W	3.08	
9752.00	90.680	181.810	7312.93	1709.32	-1709.16	-401.91	1734364.10	14546909.36	40°03'17.713"N	104°39'51.357"W	1.80	
9846.00	91.480	182.060	7311.15	1803.25	-1803.08	-405.08	1734361.28	14546815.46	40°03'16.784"N	104°39'51.397"W	0.89	
9940.00	89.850	180.980	7310.06	1897.21	-1897.04	-407.58	1734359.15	14546721.53	40°03'15.856"N	104°39'51.429"W	2.08	
10034.00	89.970	180.720	7310.21	1991.20	-1991.03	-408.97	1734358.11	14546627.57	40°03'14.927"N	104°39'51.447"W	0.30	
10128.00	90.060	179.870	7310.19	2085.20	-2085.03	-409.46	1734357.98	14546533.61	40°03'13.998"N	104°39'51.453"W	0.91	
10222.00	90.280	178.990	7309.91	2179.19	-2179.02	-408.52	1734359.27	14546439.66	40°03'13.069"N	104°39'51.441"W	0.96	
10315.00	90.710	179.120	7309.10	2272.18	-2272.01	-406.99	1734361.15	14546346.72	40°03'12.150"N	104°39'51.422"W	0.48	
10409.00	89.940	180.860	7308.57	2366.17	-2366.00	-406.97	1734361.53	14546252.76	40°03'11.222"N	104°39'51.421"W	2.02	
10503.00	90.250	180.520	7308.41	2460.16	-2459.99	-408.10	1734360.75	14546158.80	40°03'10.293"N	104°39'51.436"W	0.49	
10597.00	90.490	179.930	7307.81	2554.16	-2553.99	-408.47	1734360.74	14546064.84	40°03'09.364"N	104°39'51.441"W	0.68	
10691.00	91.350	180.130	7306.30	2648.15	-2647.98	-408.52	1734361.04	14545970.89	40°03'08.435"N	104°39'51.441"W	0.94	
10784.00	88.120	180.820	7306.73	2741.13	-2740.96	-409.29	1734360.63	14545877.94	40°03'07.516"N	104°39'51.451"W	3.55	
10877.00	87.970	180.460	7309.90	2834.07	-2833.90	-410.33	1734359.94	14545785.04	40°03'06.598"N	104°39'51.465"W	0.42	
10970.00	88.030	179.030	7313.15	2927.01	-2926.84	-409.92	1734360.71	14545692.14	40°03'05.679"N	104°39'51.459"W	1.54	
11063.00	89.140	180.320	7315.44	3019.98	-3019.81	-409.39	1734361.58	14545599.21	40°03'04.761"N	104°39'51.452"W	1.83	
11157.00	89.080	180.510	7316.90	3113.96	-3113.79	-410.07	1734361.26	14545505.26	40°03'03.832"N	104°39'51.461"W	0.21	
11251.00	91.080	181.990	7316.77	3207.93	-3207.76	-412.12	1734359.57	14545411.32	40°03'02.903"N	104°39'51.488"W	2.65	
11345.00	90.680	181.810	7315.33	3301.87	-3301.70	-415.24	1734356.81	14545317.40	40°03'01.975"N	104°39'51.528"W	0.47	
11439.00	90.400	181.540	7314.44	3395.83	-3395.65	-417.98	1734354.42	14545223.48	40°03'01.046"N	104°39'51.563"W	0.41	
11533.00	89.850	180.210	7314.24	3489.82	-3489.64	-419.42	1734353.34	14545129.52	40°03'00.118"N	104°39'51.581"W	1.53	
11626.00	89.850	179.810	7314.48	3582.82	-3582.64	-419.44	1734353.67	14545036.56	40°02'59.198"N	104°39'51.581"W	0.43	
11720.00	89.820	179.200	7314.75	3676.81	-3676.64	-418.62	1734354.84	14544942.60	40°02'58.270"N	104°39'51.571"W	0.65	
11813.00	89.720	178.970	7315.13	3769.80	-3769.62	-417.14	1734356.68	14544849.66	40°02'57.351"N	104°39'51.552"W	0.27	
11905.00	88.770	178.610	7316.34	3861.77	-3861.59	-415.20	1734358.97	14544757.73	40°02'56.442"N	104°39'51.527"W	1.10	
12000.00	87.380	178.270	7319.53	3956.68	-3956.50	-412.61	1734361.91	14544662.87	40°02'55.504"N	104°39'51.494"W	1.51	
12092.00	88.710	179.970	7322.67	4048.60	-4048.43	-411.20	1734363.67	14544570.98	40°02'54.595"N	104°39'51.475"W	2.35	
12184.00	87.880	179.420	7325.40	4140.56	-4140.39	-410.71	1734364.51	14544479.07	40°02'53.687"N	104°39'51.469"W	1.08	
12276.00	88.800	178.990	7328.07	4232.51	-4232.34	-409.43	1734366.13	14544387.16	40°02'52.778"N	104°39'51.453"W	1.10	
12368.00	90.090	181.230	7328.96	4324.50	-4324.33	-409.61	1734366.30	14544295.20	40°02'51.869"N	104°39'51.455"W	2.81	
12461.00	90.830	181.080	7328.21	4417.48	-4417.31	-411.49	1734364.78	14544202.26	40°02'50.950"N	104°39'51.479"W	0.81	
12555.00	89.380	181.240	7328.04	4511.46	-4511.28	-413.39	1734363.23	14544108.31	40°02'50.021"N	104°39'51.504"W	1.55	
12648.00	89.820	181.930	7328.69	4604.42	-4604.25	-415.96	1734361.01	14544015.38	40°02'49.103"N	104°39'51.537"W	0.88	
12742.00	90.220	180.800	7328.66	4698.39	-4698.22	-418.20	1734359.13	14543921.43	40°02'48.174"N	104°39'51.565"W	1.28	
12836.00	89.140	181.390	7329.18	4792.37	-4792.20	-420.00	1734357.69	14543827.48	40°02'47.245"N	104°39'51.588"W	1.31	
12931.00	89.230	181.320	7330.53	4887.34	-4887.16	-422.24	1734355.81	14543732.55	40°02'46.307"N	104°39'51.617"W	0.12	
13025.00	89.970	180.700	7331.19	4981.32	-4981.14	-423.90	1734354.51	14543638.60	40°02'45.378"N	104°39'51.639"W	1.03	
13119.00	88.620	180.070	7332.35	5075.31	-5075.13	-424.53	1734354.23	14543544.65	40°02'44.449"N	104°39'51.647"W	1.58	
13213.00	88.150	179.130	7335.00	5169.27	-5169.09	-423.88	1734355.24	14543450.73	40°02'43.521"N	104°39'51.638"W	1.12	
13306.00	90.710	178.620	7335.92	5262.24	-5262.06	-422.05	1734357.42	14543357.80	40°02'42.602"N	104°39'51.615"W	2.81	
13399.00	91.540	177.850	7334.10	5355.17	-5355.00	-419.19	1734360.63	14543264.91	40°02'41.684"N	104°39'51.578"W	1.22	

REFERENCE WELLPATH IDENTIFICATION				
Operator	KERR-MCGEE OIL & GAS ONSHORE LP (WA)		Slot	SLOT#28 ROBIN 9-14HZ(318'FSL & 904'FEL,SEC.09)
Area	COLORADO		Well	ROBIN 9-14HZ
Field	WELD COUNTY (UTM/TRUE NORTH)		Wellbore	ROBIN 9-14HZ AWB
Facility	SEC.09-T1N-R65W			

WELLPATH DATA (236 stations) † = interpolated/extrapolated station												
MD (ft)	Inclination (°)	Azimuth (°)	TVD (ft)	Vert Sect (ft)	North (ft)	East (ft)	Grid East (US ft)	Grid North (US ft)	Latitude	Longitude	DLS (°/100ft)	Comments
13493.00	89.880	178.600	7332.93	5449.11	-5448.94	-416.27	1734363.90	14543171.02	40°02'40.755"N	104°39'51.540"W	1.94	
13588.00	87.720	178.770	7334.92	5544.06	-5543.89	-414.09	1734366.44	14543076.12	40°02'39.817"N	104°39'51.512"W	2.28	
13681.00	87.840	178.030	7338.52	5636.95	-5636.78	-411.50	1734369.38	14542983.27	40°02'38.899"N	104°39'51.479"W	0.81	
13776.00	87.910	177.490	7342.05	5731.81	-5731.64	-407.79	1734373.45	14542888.46	40°02'37.962"N	104°39'51.431"W	0.57	
13870.00	89.750	178.890	7343.97	5825.74	-5825.57	-404.82	1734376.77	14542794.58	40°02'37.033"N	104°39'51.393"W	2.46	
13964.00	89.880	181.500	7344.27	5919.73	-5919.56	-405.14	1734376.81	14542700.63	40°02'36.104"N	104°39'51.397"W	2.78	
14058.00	90.490	182.260	7343.97	6013.68	-6013.51	-408.23	1734374.08	14542606.70	40°02'35.176"N	104°39'51.437"W	1.04	
14151.00	90.650	181.790	7343.04	6106.62	-6106.45	-411.51	1734371.15	14542513.79	40°02'34.258"N	104°39'51.479"W	0.53	
14245.00	90.920	181.090	7341.75	6200.58	-6200.41	-413.87	1734369.14	14542419.86	40°02'33.329"N	104°39'51.509"W	0.80	
14339.00	89.170	180.920	7341.68	6294.56	-6294.39	-415.52	1734367.85	14542325.91	40°02'32.400"N	104°39'51.531"W	1.87	
14433.00	89.410	180.480	7342.84	6388.55	-6388.37	-416.67	1734367.06	14542231.96	40°02'31.472"N	104°39'51.545"W	0.53	
14526.00	89.540	180.020	7343.70	6481.54	-6481.37	-417.08	1734367.01	14542139.00	40°02'30.553"N	104°39'51.550"W	0.51	
14620.00	88.770	181.110	7345.08	6575.53	-6575.35	-418.00	1734366.44	14542045.05	40°02'29.624"N	104°39'51.562"W	1.42	
14713.00	88.680	180.580	7347.15	6668.49	-6668.32	-419.37	1734365.42	14541952.11	40°02'28.705"N	104°39'51.580"W	0.58	
14807.00	88.740	179.570	7349.27	6762.47	-6762.29	-419.50	1734365.65	14541858.18	40°02'27.776"N	104°39'51.582"W	1.08	
14901.00	89.040	179.030	7351.09	6856.44	-6856.27	-418.35	1734367.15	14541764.24	40°02'26.848"N	104°39'51.567"W	0.66	
14996.00	89.200	178.660	7352.55	6951.41	-6951.24	-416.43	1734369.43	14541669.32	40°02'25.909"N	104°39'51.542"W	0.42	
15090.00	89.200	177.630	7353.86	7045.35	-7045.18	-413.39	1734372.82	14541575.43	40°02'24.981"N	104°39'51.503"W	1.10	
15183.00	89.850	180.240	7354.63	7138.32	-7138.15	-411.66	1734374.90	14541482.50	40°02'24.062"N	104°39'51.481"W	2.89	
15278.00	87.870	179.550	7356.52	7233.30	-7233.13	-411.49	1734375.44	14541387.56	40°02'23.123"N	104°39'51.478"W	2.21	
15372.00	87.810	178.900	7360.06	7327.22	-7327.05	-410.22	1734377.06	14541293.68	40°02'22.195"N	104°39'51.462"W	0.69	
15465.00	87.780	178.290	7363.64	7420.12	-7419.95	-407.94	1734379.69	14541200.82	40°02'21.277"N	104°39'51.433"W	0.66	
15559.00	88.950	179.270	7366.32	7514.06	-7513.89	-405.94	1734382.05	14541106.93	40°02'20.349"N	104°39'51.407"W	1.62	
15654.00	89.290	179.040	7367.78	7609.04	-7608.87	-404.54	1734383.81	14541011.99	40°02'19.410"N	104°39'51.389"W	0.43	
15748.00	88.610	180.770	7369.51	7703.02	-7702.85	-404.38	1734384.32	14540918.05	40°02'18.482"N	104°39'51.387"W	1.98	
15842.00	87.880	181.330	7372.38	7796.96	-7796.79	-406.10	1734382.95	14540824.14	40°02'17.553"N	104°39'51.409"W	0.98	
15936.00	88.710	180.890	7375.18	7890.90	-7890.73	-407.93	1734381.49	14540730.24	40°02'16.625"N	104°39'51.433"W	1.00	
16030.00	89.260	180.270	7376.85	7984.88	-7984.71	-408.88	1734380.89	14540636.29	40°02'15.696"N	104°39'51.445"W	0.88	
16124.00	87.350	181.600	7379.63	8078.82	-8078.65	-410.41	1734379.72	14540542.38	40°02'14.768"N	104°39'51.464"W	2.48	
16219.00	87.630	181.850	7383.79	8173.68	-8173.51	-413.27	1734377.22	14540447.54	40°02'13.830"N	104°39'51.501"W	0.39	
16313.00	87.880	181.710	7387.47	8267.57	-8267.39	-416.18	1734374.66	14540353.69	40°02'12.903"N	104°39'51.539"W	0.30	
16406.00	87.970	181.240	7390.84	8360.48	-8360.30	-418.58	1734372.62	14540260.81	40°02'11.984"N	104°39'51.569"W	0.51	
16500.00	87.810	180.950	7394.30	8454.40	-8454.22	-420.37	1734371.18	14540166.92	40°02'11.056"N	104°39'51.592"W	0.35	
16594.00	88.090	180.800	7397.66	8548.33	-8548.15	-421.81	1734370.10	14540073.02	40°02'10.128"N	104°39'51.611"W	0.34	
16688.00	89.110	181.400	7399.96	8642.28	-8642.10	-423.61	1734368.66	14539979.10	40°02'09.200"N	104°39'51.634"W	1.26	
16782.00	89.910	181.560	7400.76	8736.25	-8736.07	-426.04	1734366.58	14539885.16	40°02'08.271"N	104°39'51.665"W	0.87	
16876.00	90.490	181.250	7400.43	8830.22	-8830.04	-428.34	1734364.64	14539791.22	40°02'07.342"N	104°39'51.695"W	0.70	
16970.00	90.830	180.690	7399.35	8924.20	-8924.02	-429.93	1734363.40	14539697.27	40°02'06.414"N	104°39'51.715"W	0.70	
17063.00	90.890	180.150	7397.95	9017.18	-9017.00	-430.62	1734363.07	14539604.32	40°02'05.495"N	104°39'51.724"W	0.58	
17157.00	91.170	179.660	7396.26	9111.17	-9110.99	-430.46	1734363.58	14539510.37	40°02'04.566"N	104°39'51.722"W	0.60	
17176.00†	91.239	179.564	7395.86	9130.16	-9129.98	-430.33	1734363.78	14539491.39	40°02'04.378"N	104°39'51.720"W	0.62	ENTER RADIUS TOE (1784'FSL & 1338'FEL,SEC.21) 40.0345495 -104.6643667
17250.00	91.510	179.190	7394.09	9204.14	-9203.96	-429.53	1734364.87	14539417.45	40°02'03.647"N	104°39'51.710"W	0.62	
17344.00	91.790	178.840	7391.38	9298.08	-9297.91	-427.91	1734366.84	14539323.54	40°02'02.719"N	104°39'51.689"W	0.48	
17438.00	91.970	178.160	7388.30	9392.00	-9391.82	-425.45	1734369.65	14539229.67	40°02'01.791"N	104°39'51.657"W	0.75	
17532.00	90.370	180.180	7386.38	9485.96	-9485.78	-424.09	1734371.37	14539135.75	40°02'00.862"N	104°39'51.640"W	2.74	

Actual Wellpath Report

ROBIN 9-14HZ AWP

Page 7 of 9

REFERENCE WELLPATH IDENTIFICATION			
Operator	KERR-MCGEE OIL & GAS ONSHORE LP (WA)	Slot	SLOT#28 ROBIN 9-14HZ(318'FSL & 904'FEL,SEC.09)
Area	COLORADO	Well	ROBIN 9-14HZ
Field	WELD COUNTY (UTM/TRUE NORTH)	Wellbore	ROBIN 9-14HZ AWB
Facility	SEC.09-T1N-R65W		

WELLPATH DATA (236 stations)												
MD (ft)	Inclination (°)	Azimuth (°)	TVD (ft)	Vert Sect (ft)	North (ft)	East (ft)	Grid East (US ft)	Grid North (US ft)	Latitude	Longitude	DLS (°/100ft)	Comments
17626.00	91.020	179.220	7385.24	9579.95	-9579.78	-423.60	1734372.22	14539041.80	40°01'59.933"N	104°39'51.634"W	1.23	
17720.00	91.760	178.700	7382.96	9673.91	-9673.73	-421.89	1734374.28	14538947.89	40°01'59.005"N	104°39'51.612"W	0.96	
17813.00	90.340	180.830	7381.25	9766.88	-9766.71	-421.51	1734375.01	14538854.95	40°01'58.086"N	104°39'51.607"W	2.75	
17907.00	89.780	182.210	7381.16	9860.85	-9860.67	-424.01	1734372.87	14538761.02	40°01'57.157"N	104°39'51.639"W	1.58	
18000.00	90.340	181.540	7381.06	9953.80	-9953.62	-427.05	1734370.18	14538668.09	40°01'56.239"N	104°39'51.678"W	0.94	
18095.00	90.550	181.090	7380.32	10048.77	-10048.59	-429.23	1734368.36	14538573.15	40°01'55.300"N	104°39'51.706"W	0.52	
18188.00	90.950	180.700	7379.10	10141.75	-10141.57	-430.68	1734367.26	14538480.20	40°01'54.381"N	104°39'51.725"W	0.60	
18282.00	90.980	179.940	7377.52	10235.74	-10235.56	-431.21	1734367.09	14538386.25	40°01'53.453"N	104°39'51.731"W	0.81	
18375.00	91.230	179.280	7375.73	10328.72	-10328.54	-430.57	1734368.08	14538293.31	40°01'52.534"N	104°39'51.723"W	0.76	
18444.00	91.820	179.320	7373.89	10397.69	-10397.51	-429.73	1734369.18	14538224.37	40°01'51.852"N	104°39'51.712"W	0.86	LAST BHGE MWD+IFR1+SC SURVEY
18490.00	91.820	179.320	7372.43	10443.66	-10443.48	-429.18	1734369.90	14538178.42	40°01'51.398"N	104°39'51.705"W	0.00	PTB (471'FSL & 1336'FEL,SEC.21) 40.0309439 -104.6643626

REFERENCE WELLPATH IDENTIFICATION			
Operator	KERR-MCGEE OIL & GAS ONSHORE LP (WA)	Slot	SLOT#28 ROBIN 9-14HZ(318'FSL & 904'FEL,SEC.09)
Area	COLORADO	Well	ROBIN 9-14HZ
Field	WELD COUNTY (UTM/TRUE NORTH)	Wellbore	ROBIN 9-14HZ AWB
Facility	SEC.09-T1N-R65W		

TARGETS								
Name	TVD [ft]	North [ft]	East [ft]	Grid East [US ft]	Grid North [US ft]	Latitude	Longitude	Shape
SEC.09-T1N-R65W	0.00	0.00	-15.08	1734744.30	14548619.30	40°03'34.603"N	104°39'46.382"W	polygon
SEC.09-T1N-R65W SESE 1/4	0.00	-0.30	89.89	1734849.23	14548619.40	40°03'34.600"N	104°39'45.032"W	polygon
SEC.09-T1N-R65W SESW 1/4	0.00	-0.30	89.89	1734849.23	14548619.40	40°03'34.600"N	104°39'45.032"W	polygon
SEC.16-T1N-R65W	0.00	0.00	-15.08	1734744.30	14548619.30	40°03'34.603"N	104°39'46.382"W	polygon
SEC.21-T1N-R65W	0.00	0.00	-15.08	1734744.30	14548619.30	40°03'34.603"N	104°39'46.382"W	polygon
ROBIN 9-14HZ INT. TARGET 1	7304.00	-3499.83	-417.17	1734355.62	14545119.35	40°03'00.017"N	104°39'51.552"W	point
ROBIN 9-14HZ HEEL REV-1(400'FSL & 1320'FEL,SEC.09)	7337.00	82.72	-415.68	1734343.55	14548700.47	40°03'35.420"N	104°39'51.534"W	point
ROBIN 9-14HZ HEEL REV-2(445'FSL & 1320'FEL,SEC.09)	7337.00	127.68	-415.68	1734343.38	14548745.41	40°03'35.865"N	104°39'51.534"W	point
ROBIN 9-14HZ BHL REV-1(468'FSL & 1327'FEL,SEC.21)	7393.00	-10445.98	-420.07	1734379.03	14538175.95	40°01'51.373"N	104°39'51.588"W	point
ROBIN 9-14HZ INT. TARGET 2	7393.00	-7399.83	-418.80	1734368.76	14541220.90	40°02'21.476"N	104°39'51.572"W	point
ROBIN 9-14HZ LANDBOX	7393.00	0.00	0.00	1734759.38	14548619.36	40°03'34.603"N	104°39'46.188"W	polygon
ROBIN 9-14HZ RADIUS 1	7393.00	-317.39	-420.55	1734340.20	14548300.50	40°03'31.466"N	104°39'51.597"W	polygon
ROBIN 9-14HZ RADIUS 2	7393.00	-9588.72	-414.24	1734381.60	14539032.90	40°01'59.845"N	104°39'51.513"W	polygon

WELLPATH COMPOSITION - Ref Wellbore: ROBIN 9-14HZ AWB Ref Wellpath: ROBIN 9-14HZ AWP				
Start MD [ft]	End MD [ft]	Positional Uncertainty Model	Log Name/Comment	Wellbore
32.00	1792.00	Custom APC ISCWSA REV 2 MWD+IFR1 (approximation)	Custom APC ISCWSA Rev-2 MWD+IFR1 <144 - 1792>	ROBIN 9-14HZ AWB
1792.00	18444.00	Custom APC ISCWSA REV 2 MWD+IFR1+SC (approximation)	BHGE Custom APC ISCWSA Rev-2 MWD+IFR1+SC <1931 - 18444>	ROBIN 9-14HZ AWB
18444.00	18490.00	Blind Drilling (std)	Projection to bit	ROBIN 9-14HZ AWB

REFERENCE WELLPATH IDENTIFICATION			
Operator	KERR-MCGEE OIL & GAS ONSHORE LP (WA)	Slot	SLOT#28 ROBIN 9-14HZ(318'FSL & 904'FEL,SEC.09)
Area	COLORADO	Well	ROBIN 9-14HZ
Field	WELD COUNTY (UTM/TRUE NORTH)	Wellbore	ROBIN 9-14HZ AWB
Facility	SEC.09-T1N-R65W		

WELLPATH COMMENTS				
MD [ft]	Inclination [°]	Azimuth [°]	TVD [ft]	Comment
144.00	1.320	182.650	143.99	FIRST SURFACE MWD+IFR1 SURVEY
1792.00	9.620	327.320	1779.88	LAST SURFACE MWD+IFR1 SURVEY
1931.00	9.510	338.000	1916.96	FIRST BHGE MWD+IFR1+SC SURVEY
6574.00	3.661	173.636	6443.65	KOP
7465.00	59.649	179.571	7187.14	ENTER LANDBOX (870'FSL & 1332'FEL,SEC.09) 40.0611278 -104.6643485
7937.00	82.554	180.793	7325.64	LANDING (423'FSL & 1335'FEL,SEC.09) 40.0598989 -104.6643702
8821.00	91.028	179.601	7324.76	EXIT RADIUS HEEL (461'FNL & 1321'FEL,SEC.16) 40.0574745 -104.6643142
17176.00	91.239	179.564	7395.86	ENTER RADIUS TOE (1784'FSL & 1338'FEL,SEC.21) 40.0345495 -104.6643667
18444.00	91.820	179.320	7373.89	LAST BHGE MWD+IFR1+SC SURVEY
18490.00	91.820	179.320	7372.43	PTB (471'FSL & 1336'FEL,SEC.21) 40.0309439 -104.6643626