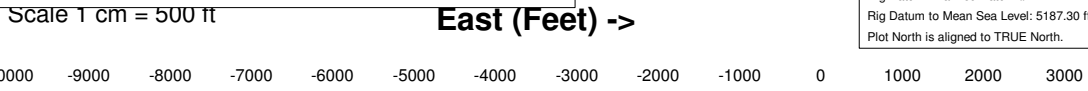
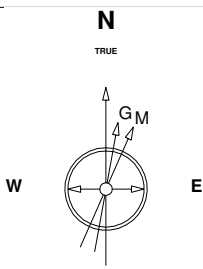


Great Western Operating Company, LLC

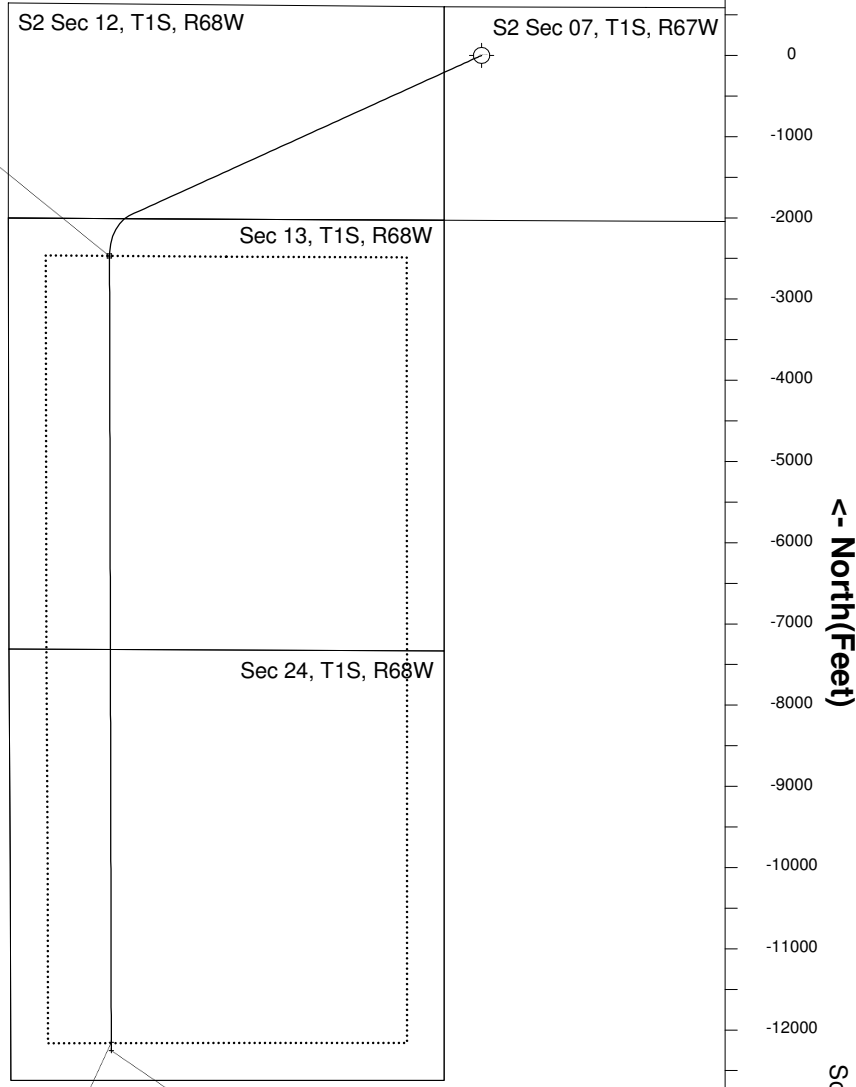
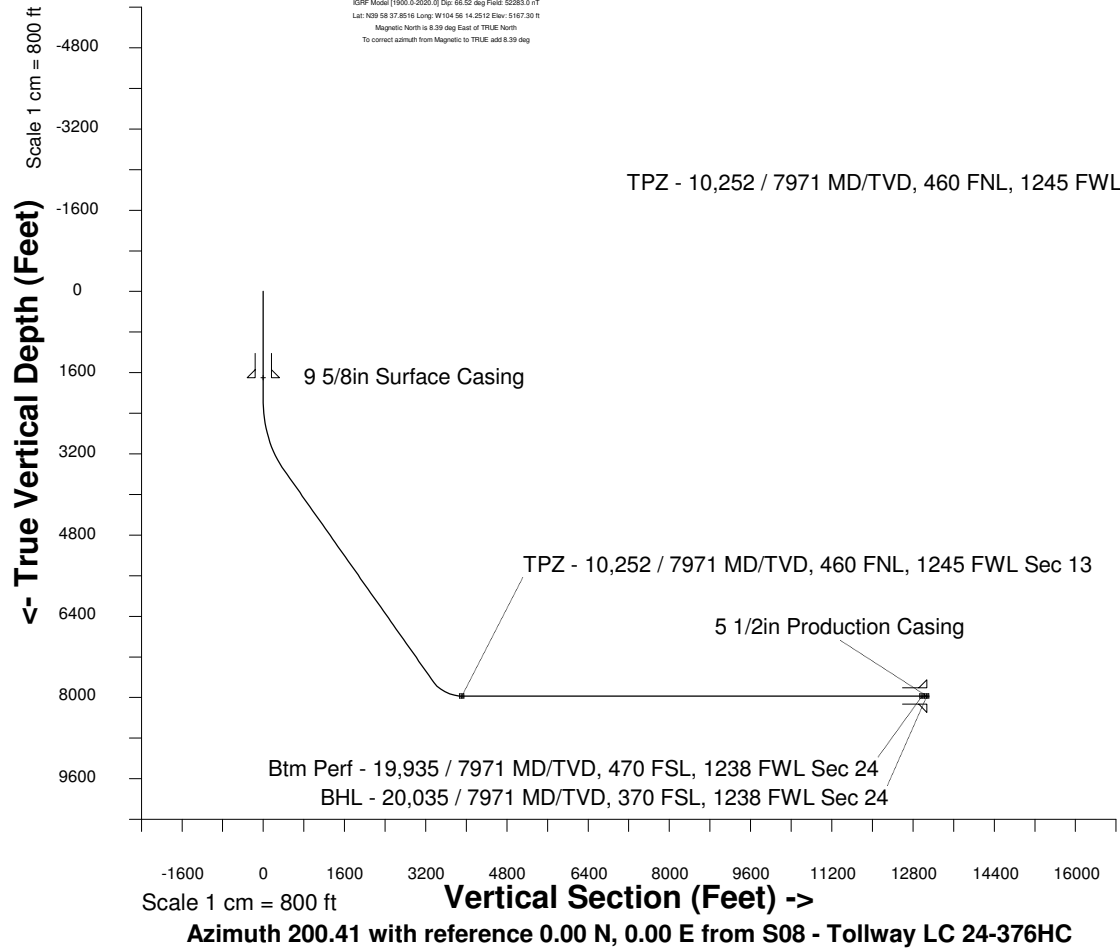
Created by admin
Date plotted 17-Jan-2018

Location Colorado **Slot** S08 - Tollway LC 24-376HC
Field Wattenburg **Well** Tollway LC 24-376HC
Installation Tollway **Wellbore** Tollway LC 24-376HC (PWB)

Plot reference is Tollway LC 24-376HC (PWB).
 Ref wellpath is Tollway LC 24-376HC (PWP#1).
 Coordinates are in Feet reference S08 - Tollway LC 24-376HC.
 True Vertical Depths are reference Rig Datum.
 Measured Depths are reference Rig Datum.
 Rig Datum: Planned Datum #1
 Rig Datum to Mean Sea Level: 5187.30 ft.
 Plot North is aligned to TRUE North.



20-Apr-2016
 IGRF Model [1900.0-2020.0] Dip: 66.52 deg Field: 52283.0 nT
 Lat: N09 58 37.85 W Long: W104 56 14.25 Elev: 5187.30 ft
 Magnetic North is 8.39 deg East of TRUE North
 To correct azimuth from Magnetic to TRUE, add 8.39 deg



WELL PROFILE DATA

Point	MD	Inc	Azi	TVD	North	East	deg/100ft	V. Sect
Tie on	0.00	0.00	0.00	0.00	S 0.00	W 0.00		-0.00
KOP	2147.00	0.00	245.55	2147.00	S 0.00	W 0.00	0.00	-0.00
End of Build	3647.05	45.00	245.55	3497.51	S 231.54	W 509.26	9.84	394.61
End of Hold	9587.79	45.00	245.55	7698.13	S 1970.23	W 4333.40	0.00	3357.82
Target TPZ - ...Sec 13	10252.04	90.00	179.87	7971.00	S 2469.07	W 4580.95	36.09	3911.68
Target Btm Pe...Sec 24	19934.76	90.00	179.87	7971.00	S 12151.76	W 4559.46	0.00	12978.94
End of Turn	19934.96	90.00	179.85	7971.00	S 12151.97	W 4559.46	36.09	12979.13
T.D. & Target BHL... 24	20034.93	90.00	179.85	7971.00	S 12251.94	W 4559.20	0.00	13072.73