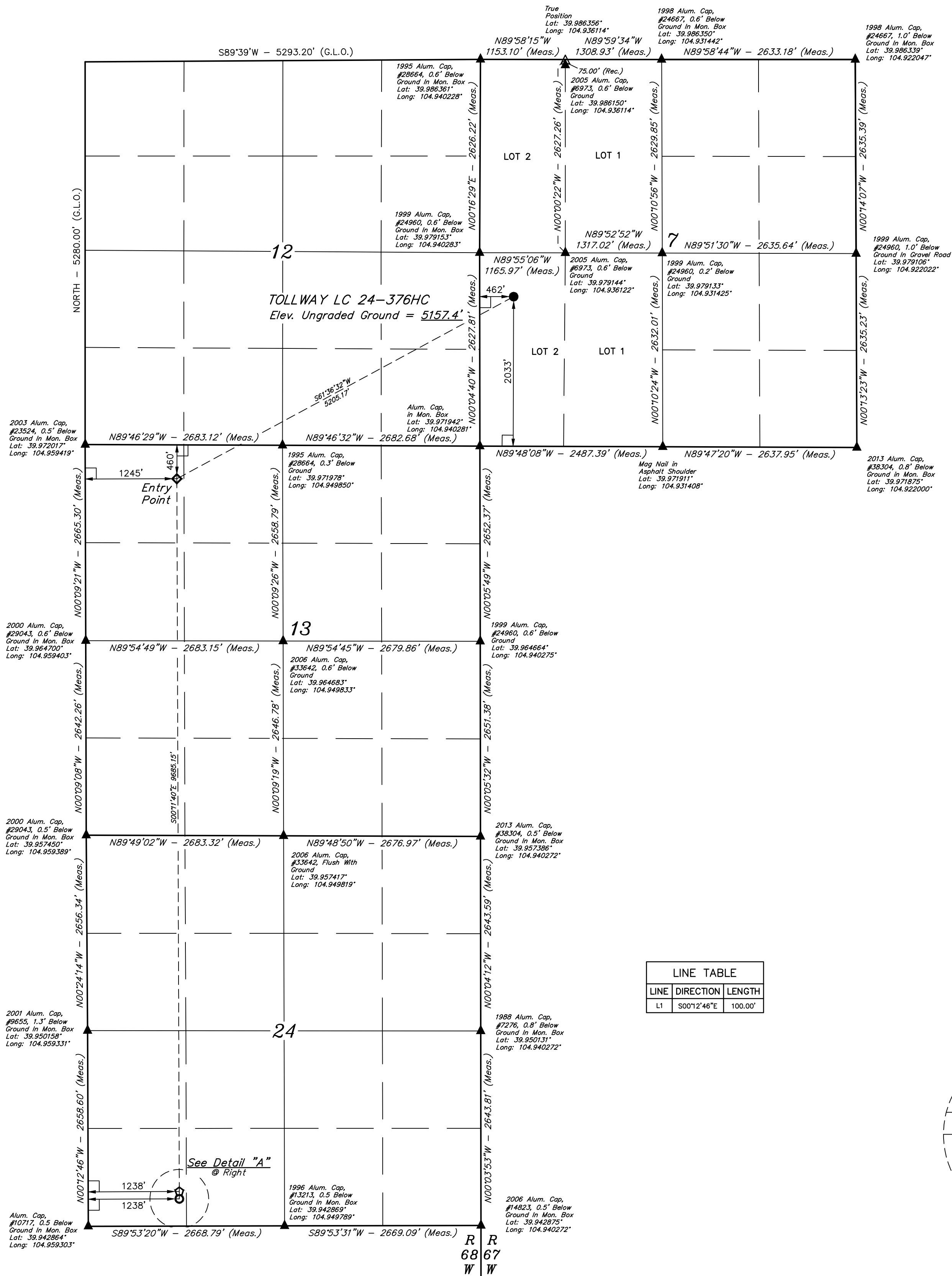
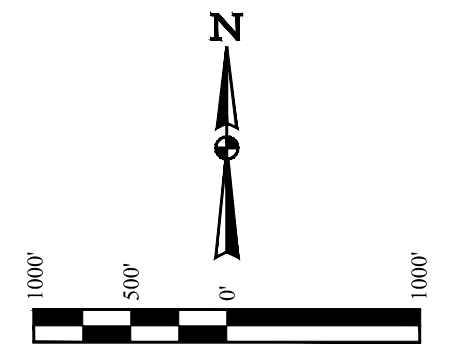
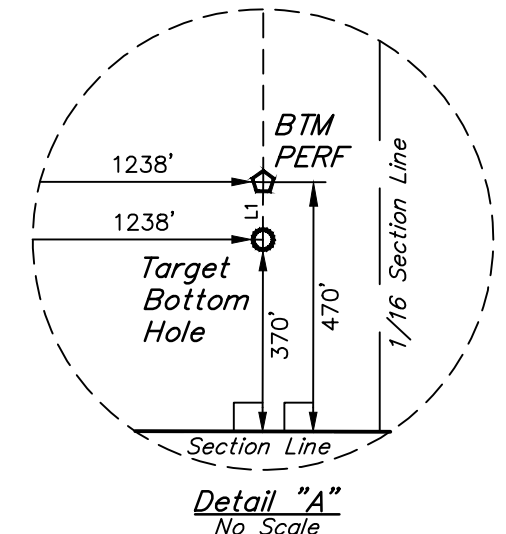


BASIS OF BEARINGS  
BASIS OF ELEVATION  
BENCHMARK JR 53 5026 LOCATED IN THE SW 1/4 SE 1/4  
OF SECTION 18, T1N, R68W, 6th P.M., TAKEN FROM 1988  
PUBLISHED DATUM BY THE UNITED STATES DEPARTMENT  
OF THE INTERIOR, GEOLOGICAL SURVEY AS BEING 5028 FEET.



LINE TABLE		
LINE	DIRECTION	LENGTH
L1	S00°12'46"E	100.00'



CERTIFICATE OF REGISTRATION  
THIS IS TO CERTIFY THAT THE ABOVE IS A TRUE AND CORRECT COPY OF THE ORIGINAL SURVEY AND THAT THE SAME ARE TRUE AND CORRECT TO THE BEST OF MY KNOWLEDGE AND BELIEF.  
REGISTERED LAND SURVEYOR  
REG. NO. 28285  
STATE OF COLORADO  
JULIAN L. BROWN

- LEGEND:
- = 90° SYMBOL
  - = PROPOSED WELLHEAD.
  - ◆ = ENTRY POINT.
  - ⊙ = BTM PERF.
  - ⊙ = TARGET BOTTOM HOLE.
  - ▲ = SECTION CORNERS LOCATED. (NAD 83)
  - △ = SECTION CORNERS RE-ESTABLISHED. (Not Set on Ground.) (NAD 83)

NAD 83 (SURFACE LOCATION)	NAD 83 (ENTRY POINT)	NAD 83 (BTM PERF)	NAD 83 (TARGET BOTTOM HOLE)
LATITUDE = 39°58'39.05" (39.977515)	LATITUDE = 39°58'14.65" (39.970736)	LATITUDE = 39°56'38.96" (39.944156)	LATITUDE = 39°56'37.97" (39.943881)
LONGITUDE = 104°56'19.08" (104.938633)	LONGITUDE = 104°57'17.92" (104.954977)	LONGITUDE = 104°57'17.62" (104.954894)	LONGITUDE = 104°57'17.62" (104.954893)
NAD 27 (SURFACE LOCATION)	NAD 27 (ENTRY POINT)	NAD 27 (BTM PERF)	NAD 27 (TARGET BOTTOM HOLE)
LATITUDE = 39°58'39.11" (39.977530)	LATITUDE = 39°58'14.71" (39.970752)	LATITUDE = 39°56'39.02" (39.944171)	LATITUDE = 39°56'38.03" (39.943896)
LONGITUDE = 104°56'17.16" (104.938099)	LONGITUDE = 104°57'15.99" (104.954443)	LONGITUDE = 104°57'15.70" (104.954360)	LONGITUDE = 104°57'15.69" (104.954359)

REV: 2 01-04-18 K.B. (BP ADD, SL, EP, TBM & NAME CHANGE)

PDOP = 1.5

UJINTAH ENGINEERING & LAND SURVEYING

UJELLS, LLC  
Corporate Office \* 85 South 200 East  
Vernal, UT 84078 \* (435) 789-1017

SURVEYED BY	GREG WEIMER	01-04-18	SCALE
DRAWN BY	L.C.S.	03-29-16	1" = 1000'

**WELL LOCATION PLAT**