

Great Western Operating Company, LLC

Location Colorado
Field Wattenburg
Installation Tollway
Slot S04 - Tollway LC 24-373HC
Well Tollway LC 24-373HC
Wellbore Tollway LC 24-373HC (PWB)

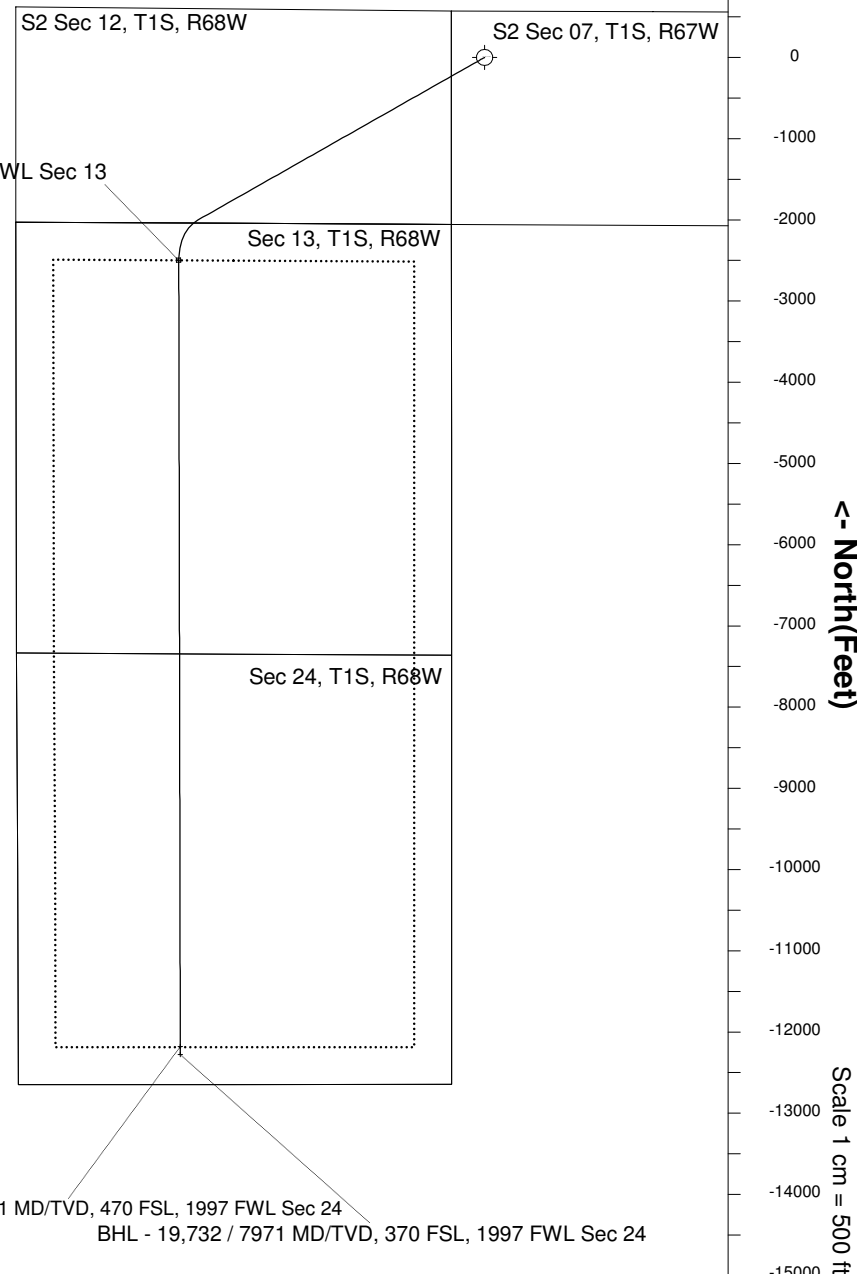
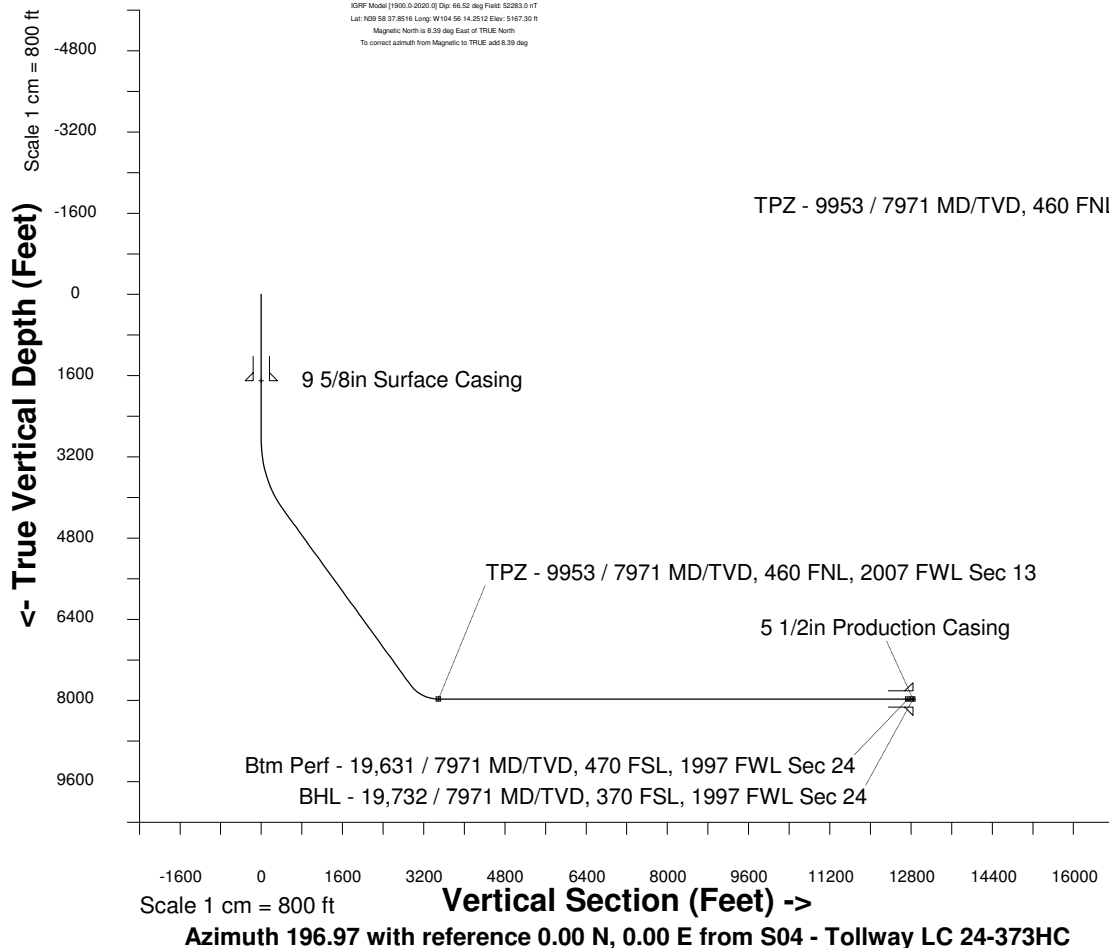
Created by admin
Date plotted 17-Jan-2018
Plot reference is Tollway LC 24-373HC (PWB).
Ref wellpath is Tollway LC 24-373HC (PWP#1).
Coordinates are in Feet reference S04 - Tollway LC 24-373HC.
True Vertical Depths are reference Rig Datum.
Measured Depths are reference Rig Datum.
Rig Datum: Planned Datum #1
Rig Datum to Mean Sea Level: 5187.30 ft.
Plot North is aligned to TRUE North.

Scale 1 cm = 500 ft

East (Feet) ->

-10000 -9000 -8000 -7000 -6000 -5000 -4000 -3000 -2000 -1000 0 1000 2000 3000

20-Apr-2016
KOPF Model [1900.0-2020.0] Dip: 66.52 deg Field: 52283.0 nT
Lat: N29 58 37.8516 Long: W104 56 14.2512 Elev: 5167.30 ft
Magnetic North is 6.39 deg East of TRUE North
To correct azimuth from Magnetic to TRUE, add 6.39 deg



WELL PROFILE DATA

Point	MD	Inc	Azi	TVD	North	East	deg/100ft	V. Sect
Tie on	0.00	0.00	0.00	0.00	S 0.00	W 0.00		-0.00
KOP	2850.00	0.00	240.44	2850.00	S 0.00	W 0.00	0.00	-0.00
End of Build	4349.96	45.00	240.44	4200.45	S 275.99	W 486.53	9.84	405.98
End of Hold	9319.86	45.00	240.44	7714.76	S 2009.92	W 3543.15	0.00	2956.57
Target TPZ - ...Sec 13	9953.06	90.00	179.89	7971.00	S 2498.71	W 3765.33	36.09	3488.93
Target Btm Pe...Sec 24	19631.40	90.00	179.89	7971.00	S 12177.03	W 3746.88	0.00	12740.42
End of Turn	19631.79	90.00	179.85	7971.00	S 12177.42	W 3746.88	36.09	12740.80
T.D. & Target BHL... 24	19731.58	90.00	179.85	7971.00	S 12277.21	W 3746.62	0.00	12836.16

Btm Perf - 19,631 / 7971 MD/TVD, 470 FSL, 1997 FWL Sec 24
BHL - 19,732 / 7971 MD/TVD, 370 FSL, 1997 FWL Sec 24