

Great Western Operating Company, LLC

Location Colorado
Field Wattenburg
Installation Tollway

Slot S03 - Tollway LC 24-372HNX
Well Tollway LC 24-372HNX
Wellbore Tollway LC 24-372HNX (PWB)

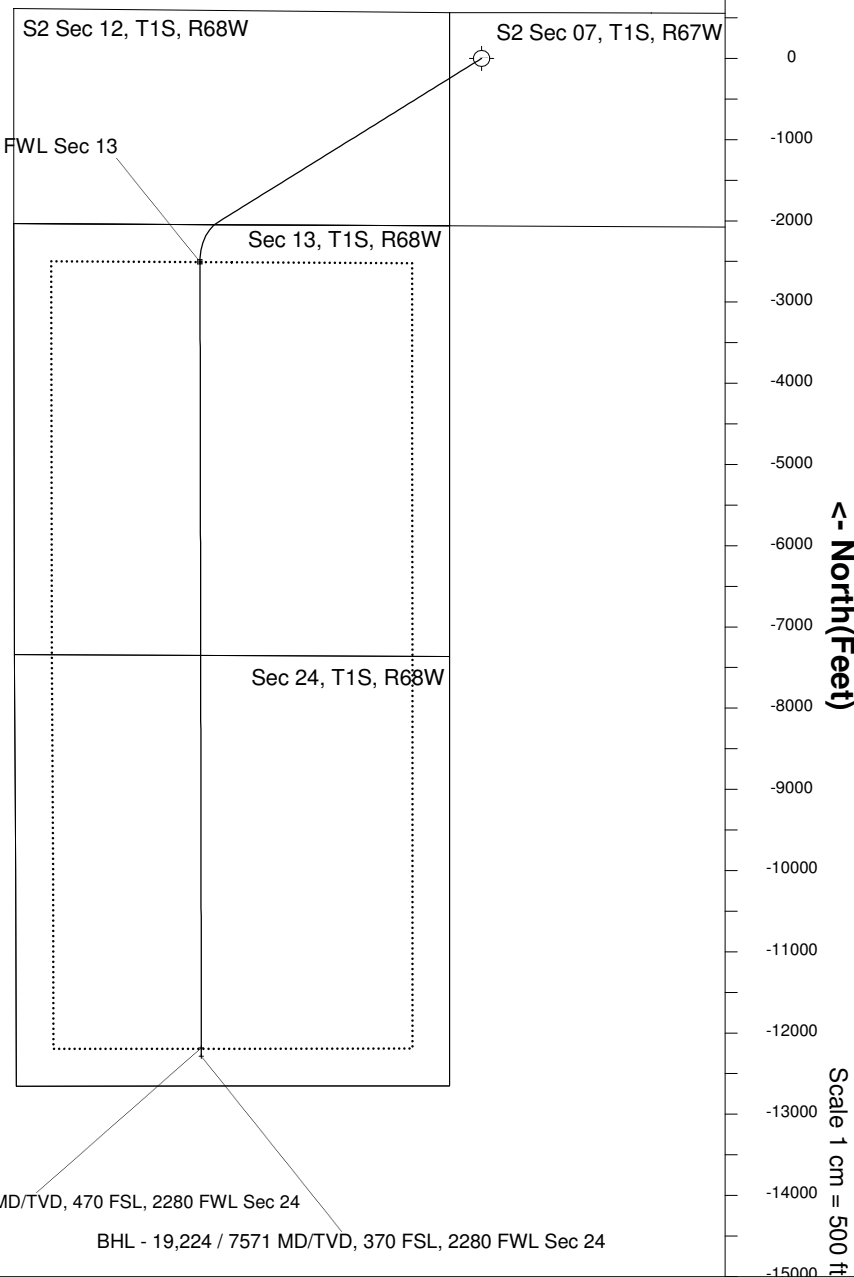
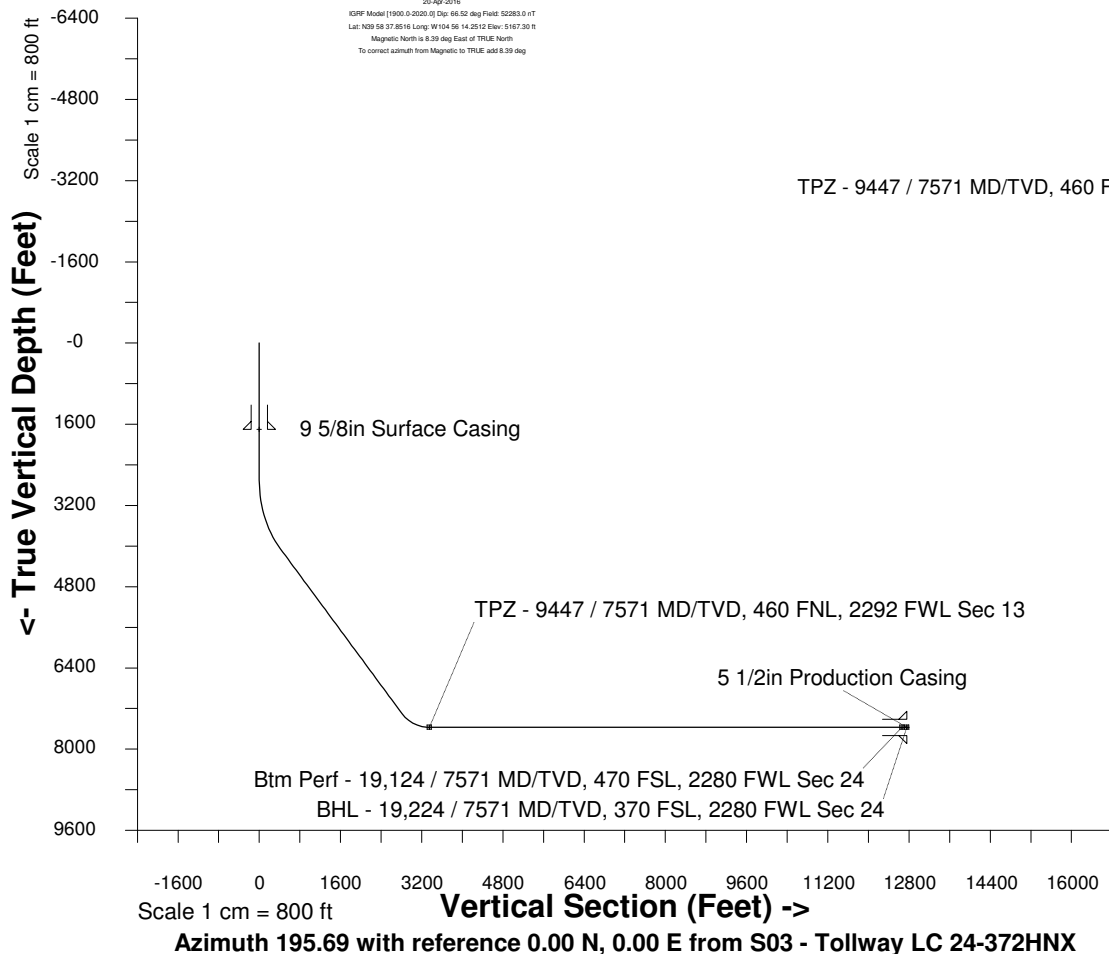
Scale 1 cm = 500 ft

East (Feet) ->

Created by admin
Date plotted 17-Jan-2018

Plot reference is Tollway LC 24-372HNX (PWB).
Ref wellpath is Tollway LC 24-372HNX (PWP#1).
Coordinates are in Feet reference S03 - Tollway LC 24-372HNX.
True Vertical Depths are reference Rig Datum.
Measured Depths are reference Rig Datum.
Rig Datum: Planned Datum #1
Rig Datum to Mean Sea Level: 5187.30 ft.
Plot North is aligned to TRUE North.

20-Apr-2016
IGFP Model [1900.0-2020.0] Dip: 66.52 deg Field: 52283.0 rT
Lat: N29 58 37.8516 Long: W104 56 14.2512 Elev: 5167.30 ft
Magnetic North is 8.39 deg East of TRUE North
To correct azimuth from Magnetic to TRUE, add 8.39 deg



WELL PROFILE DATA

Point	MD	Inc	Azi	TVD	North	East	deg/100ft	V. Sect
Tie on	0.00	0.00	0.00	0.00	S 0.00	W 0.00		-0.00
KOP	2698.00	0.00	238.15	2698.00	S 0.00	W 0.00	0.00	-0.00
End of Build	4198.09	45.00	238.15	4048.54	S 295.26	W 475.19	9.84	412.76
End of Hold	8827.51	45.00	238.15	7321.88	S 2022.96	W 3255.80	0.00	2828.03
Target TPZ - ...Sec 13	9447.05	90.00	179.90	7571.00	S 2506.77	W 3466.82	36.09	3350.87
Target Btm Pe...Sec 24	19123.93	90.00	179.90	7571.00	S 12183.63	W 3450.51	0.00	12662.79
End of Turn	19124.44	90.00	179.85	7571.00	S 12184.15	W 3450.51	36.09	12663.28
T.D. & Target BHL... 24	19223.74	90.00	179.85	7571.00	S 12283.45	W 3450.24	0.00	12758.81

Btm Perf - 19,124 / 7571 MD/TVD, 470 FSL, 2280 FWL Sec 24

BHL - 19,224 / 7571 MD/TVD, 370 FSL, 2280 FWL Sec 24