

Great Western Operating Company, LLC

Location Colorado
Field Wattenburg
Installation Tollway

Slot S01 - Tollway LC 24-371HN
Well Tollway LC 24-371HN
Wellbore Tollway LC 24-371HN (PWB)

Created by admin
Date plotted 17-Jan-2018

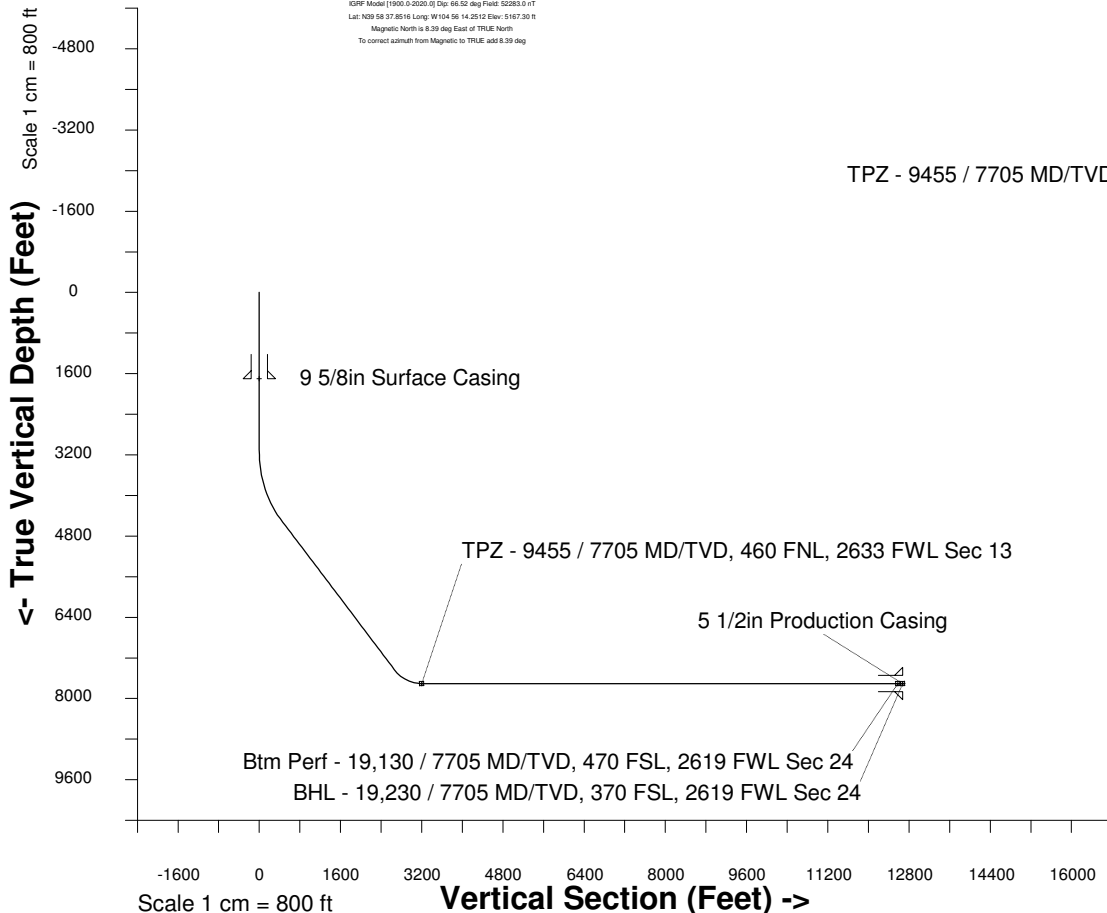
Plot reference is Tollway LC 24-371HN (PWB).
Ref wellpath is Tollway LC 24-371HN (PWP#1).
Coordinates are in Feet reference S01 - Tollway LC 24-371HN.
True Vertical Depths are reference Rig Datum.
Measured Depths are reference Rig Datum.
Rig Datum: Planned Datum #1
Rig Datum to Mean Sea Level: 5187.30 ft.
Plot North is aligned to TRUE North.

Scale 1 cm = 500 ft

East (Feet) ->

-10000 -9000 -8000 -7000 -6000 -5000 -4000 -3000 -2000 -1000 0 1000 2000 3000

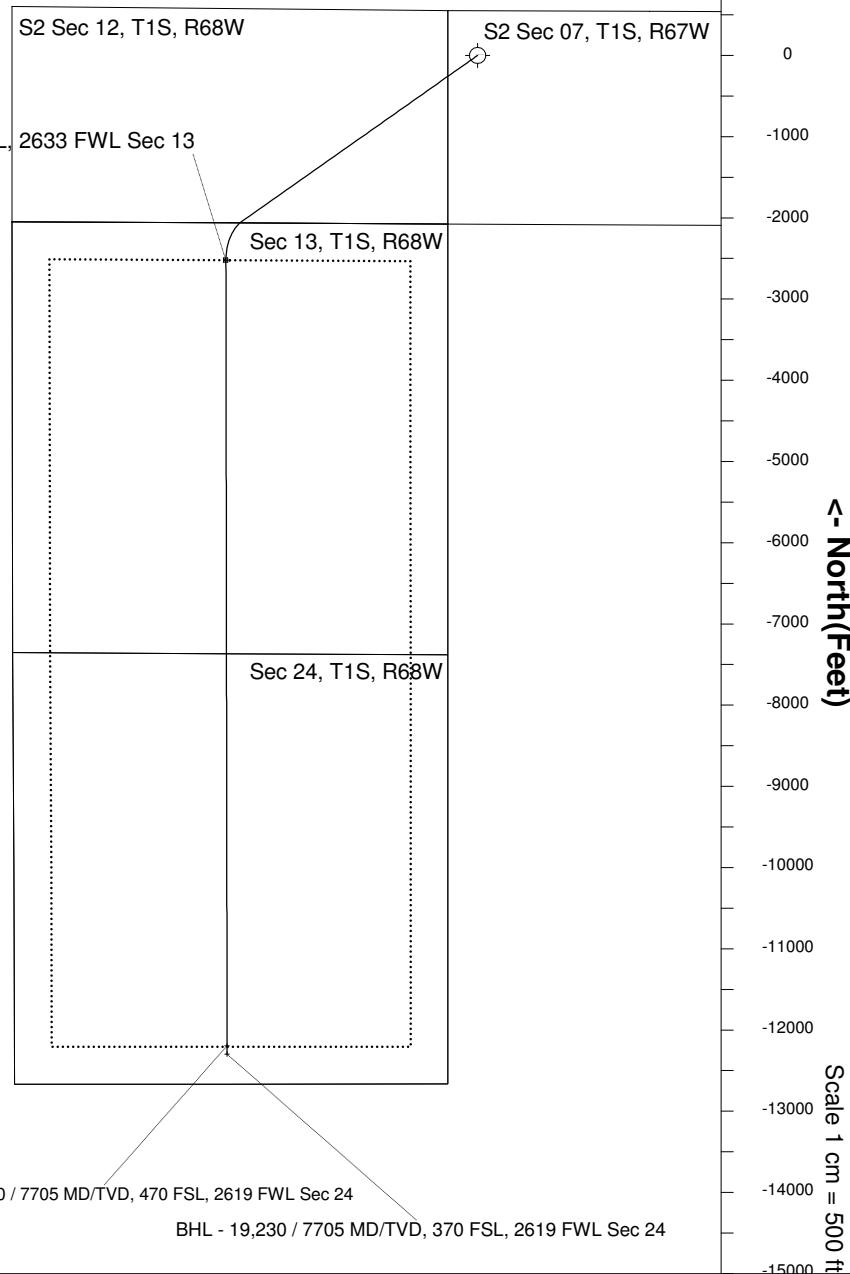
20-Apr-2016
KOPF Model [1900.0-2020.0] Dip: 66.52 deg Field: 52283.0 nT
Lat: N29 58 37.8516 Long: W104 56 14.2512 Elev: 5167.30 ft
Magnetic North is 6.39 deg East of TRUE North
To correct azimuth from Magnetic to TRUE, add 6.39 deg



Scale 1 cm = 800 ft
Vertical Section (Feet) ->
Azimuth 194.08 with reference 0.00 N, 0.00 E from S01 - Tollway LC 24-371HN

WELL PROFILE DATA

Point	MD	Inc	Azi	TVD	North	East	deg/100ft	V. Sect
Tie on	0.00	0.00	0.00	0.00	S 0.00	W 0.00		-0.00
KOP	3123.00	0.00	234.84	3123.00	S 0.00	W 0.00	0.00	-0.00
End of Build	4623.07	45.00	234.84	4473.52	S 322.18	W 457.35	9.84	423.77
End of Hold	8854.83	45.00	234.84	7465.72	S 2045.54	W 2903.69	0.00	2690.49
Target TPZ - ...Sec 13	9455.04	90.00	179.91	7705.00	S 2521.75	W 3098.81	36.09	3199.86
Target Btm Pe...Sec 24	19129.73	90.00	179.91	7705.00	S 12196.43	W 3084.32	0.00	12580.36
End of Turn	19130.35	90.00	179.85	7705.00	S 12197.05	W 3084.32	36.09	12580.96
T.D. & Target BHL... 24	19229.54	90.00	179.85	7705.00	S 12296.25	W 3084.05	0.00	12677.11



Btm Perf - 19,130 / 7705 MD/TVD, 470 FSL, 2619 FWL Sec 24
BHL - 19,230 / 7705 MD/TVD, 370 FSL, 2619 FWL Sec 24