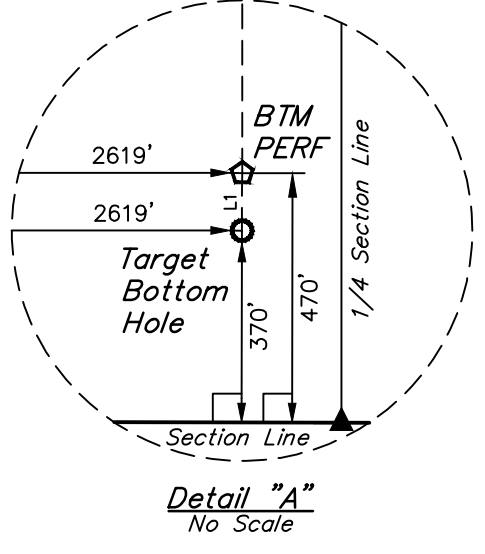


LINE TABLE		
LINE	DIRECTION	LENGTH
L1	S00°12'46\"E	100.00'



CERTIFICATE OF RECORDING
THIS IS TO CERTIFY THAT THE ABOVE DESCRIBED SURVEY WAS MADE IN ACCORDANCE WITH THE PROVISIONS OF THE COLORADO SURVEYING ACT, AND THAT THE SAME ARE TRUE AND CORRECT TO THE BEST OF MY KNOWLEDGE AND BELIEF.
REGISTERED LAND SURVEYOR
RECORDING NO. 28285
STATE OF COLORADO
JUL 18 2018

LEGEND:

- 90° SYMBOL
- PROPOSED WELLHEAD
- ENTRY POINT
- BTM PERF
- TARGET BOTTOM HOLE
- SECTION CORNERS LOCATED (NAD 83)
- SECTION CORNERS RE-ESTABLISHED (Not Set on Ground) (NAD 83)

REV: 2 01-04-18 K.B. (BP ADD, SL, EP, TBI & NAME CHANGE)

PDOP = 1.5

NAD 83 (SURFACE LOCATION)	NAD 83 (ENTRY POINT)	NAD 83 (BTM PERF)	NAD 83 (TARGET BOTTOM HOLE)
LATITUDE = 39°58'39.50" (39.977640)	LATITUDE = 39°58'14.58" (39.970717)	LATITUDE = 39°56'38.97" (39.944159)	LATITUDE = 39°56'37.98" (39.943885)
LONGITUDE = 104°56'20.29" (104.938970)	LONGITUDE = 104°57'00.09" (104.950026)	LONGITUDE = 104°56'59.89" (104.949970)	LONGITUDE = 104°56'59.89" (104.949969)
NAD 27 (SURFACE LOCATION)	NAD 27 (ENTRY POINT)	NAD 27 (BTM PERF)	NAD 27 (TARGET BOTTOM HOLE)
LATITUDE = 39°58'39.56" (39.977656)	LATITUDE = 39°58'14.64" (39.970733)	LATITUDE = 39°56'39.03" (39.944174)	LATITUDE = 39°56'38.04" (39.943900)
LONGITUDE = 104°56'18.37" (104.938436)	LONGITUDE = 104°56'58.17" (104.949492)	LONGITUDE = 104°56'57.97" (104.949436)	LONGITUDE = 104°56'57.97" (104.949435)

UINTEAH

ENGINEERING & LAND SURVEYING

UELS, LLC

Corporate Office * 85 South 200 East
Vernal, UT 84078 * (435) 789-1017

SURVEYED BY	GREG WEIMER	01-04-18	SCALE
DRAWN BY	L.C.S.	03-29-16	1" = 1000'

WELL LOCATION PLAT