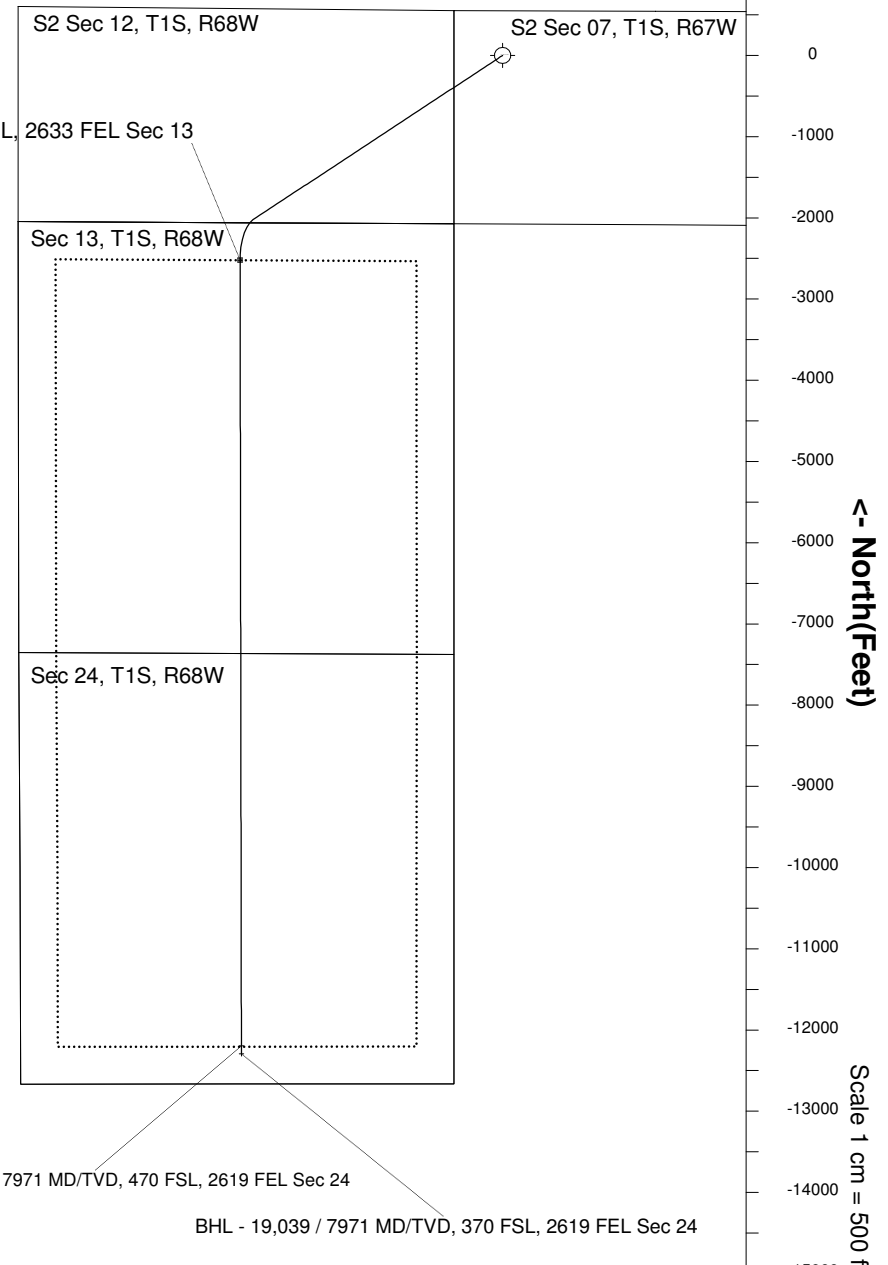
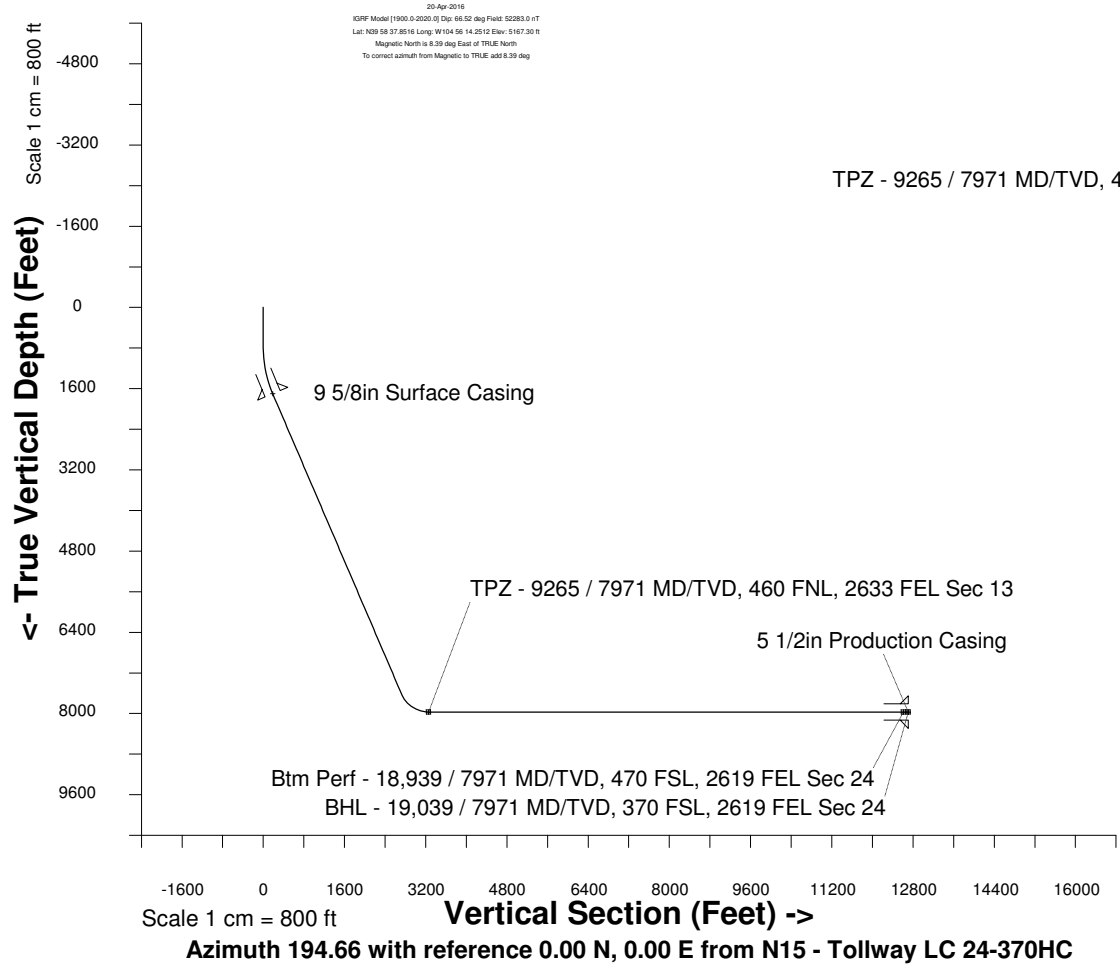


Great Western Operating Company, LLC

Location	Colorado	Slot	N15 - Tollway LC 24-370HC
Field	Wattenburg	Well	Tollway LC 24-370HC
Installation	Tollway	Wellbore	Tollway LC 24-370HC (PWB)

Created by	admin
Date plotted	17-Jan-2018
Plot reference is Tollway LC 24-370HC (PWB).	
Ref wellpath is Tollway LC 24-370HC (PWP#1).	
Coordinates are in Feet reference N15 - Tollway LC 24-370HC.	
True Vertical Depths are reference Rig Datum.	
Measured Depths are reference Rig Datum.	
Rig Datum: Planned Datum #1	
Rig Datum to Mean Sea Level: 5187.30 ft.	
Plot North is aligned to TRUE North.	



WELL PROFILE DATA								
Point	MD	Inc	Azi	TVD	North	East	deg/100ft	V. Sect
Tie on	0.00	0.00	0.00	0.00	S 0.00	W 0.00		-0.00
KOP	755.00	0.00	236.65	755.00	S 0.00	W 0.00	0.00	-0.00
End of Build	1754.91	30.00	236.65	1709.86	S 140.65	W 213.69	9.84	190.15
End of Hold	8591.35	30.00	236.65	7630.54	S 2019.83	W 3068.71	0.00	2730.65
Target TPZ - ...Sec 13	9264.87	90.00	179.90	7971.00	S 2521.01	W 3232.23	36.09	3256.90
Target Btm Pe...Sec 24	18939.19	90.00	179.90	7971.00	S 12195.32	W 3216.10	0.00	12612.24
End of Turn	18940.13	90.00	180.01	7971.00	S 12196.26	W 3216.10	36.09	12613.15
T.D. & Target BHL... 24	19039.01	90.00	180.01	7971.00	S 12295.14	W 3216.11	0.00	12708.81