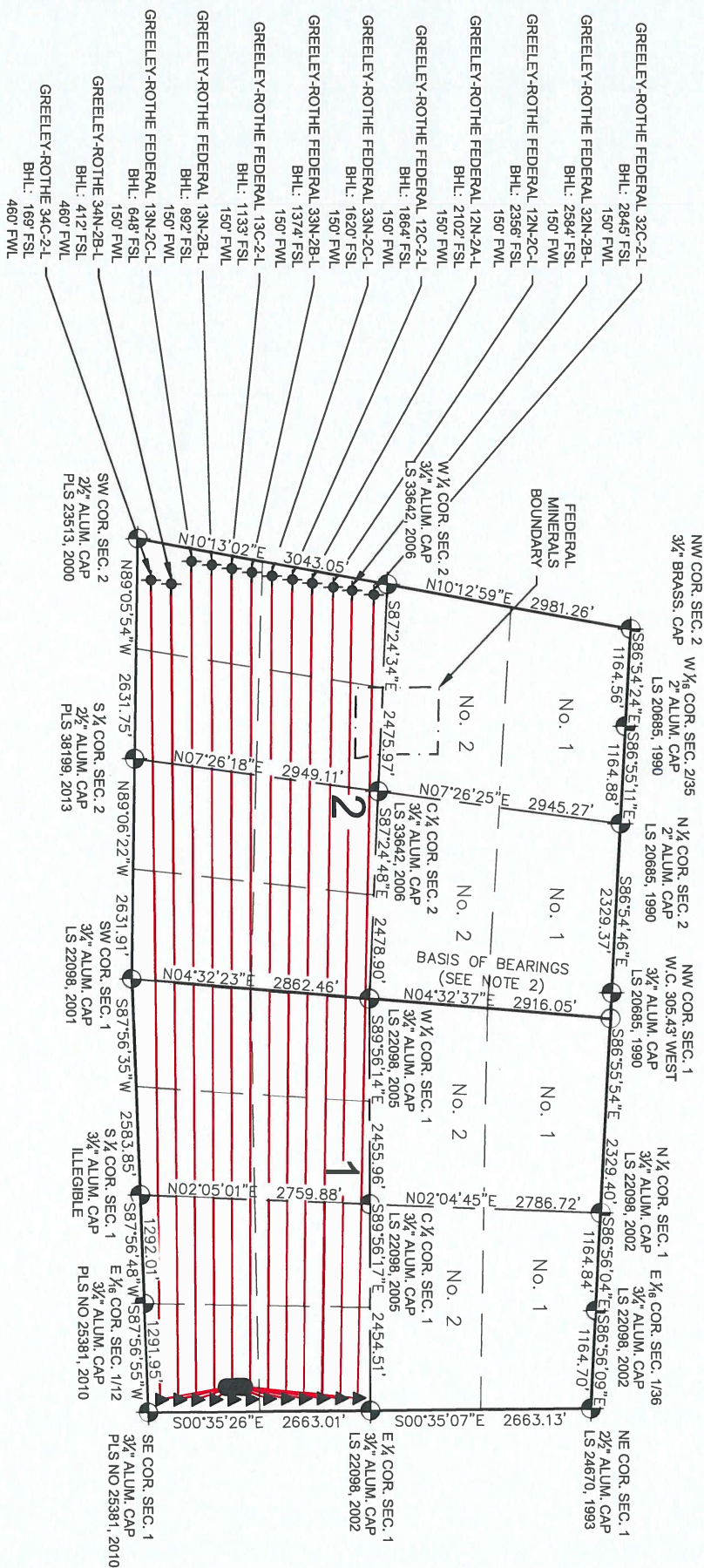
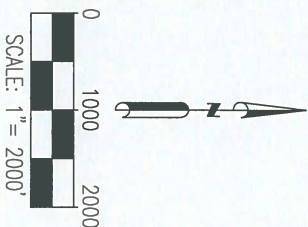


# GREELEY-ROTHER FEDERAL 16-1 PAD MULTI-WELL PLAN



- NOTES:**
1. THIS FIELD SURVEY CONFORMS TO THE MINIMUM STANDARDS SET BY THE C.O.G.C., RULE NO. 215
  2. BEARINGS ARE BASED ON THE ASSUMPTION THAT THE WEST LINE OF THE NORTHWEST QUARTER OF SECTION 1, BEARS N04°32'37"E BETWEEN THE MONUMENTS SHOWN HEREON.
  3. ALL DISTANCES AND BEARINGS SHOWN HEREON ARE GROUND VALUES AS GPS MEASURED IN THE FIELD. WITH TIES TO WELLS MEASURED PERPENDICULAR TO SECTION LINES. THIS LOW DISTORTION PROJECTION (LDP) IS BASED ON THE NORTH AMERICAN DATUM OF 1983, U.S. SURVEY FOOT WITH A LATITUDE ORIGIN OF 40.392439°N, A CENTRAL MERIDIAN LONGITUDE OF 104.888128°W, AND A SCALE FACTOR ON THE CENTRAL MERIDIAN OF 1.000232 (EXACT). THE LDP BASIS OF BEARINGS IS GEODETIC NORTH.
  4. FIELD VERIFICATION OF MONUMENTS COMPLETED WITHIN 1 YEAR OF SIGNATURE DATE.

- LEGEND**
- = EXISTING MONUMENT
  - = CALCULATED POSITION
  - ▲ = TOP OF PRODUCTION ZONE
  - = PROPOSED WELL
  - TPZ = TOP OF PRODUCTION ZONE
  - BHL = BOTTOM HOLE LOCATION



**ASCENT**  
GEOMATICS SOLUTIONS  
7535 Hilltop Circle  
Denver, CO 80221  
(303) 918-7128  
www.ascentgeomatics.com

FIELD DATE: 03-09-17  
DRAWING DATE: 08-18-17  
BY: CSG  
CHECKED BY: KAD

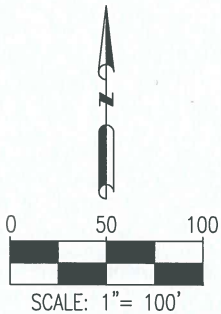
SITE NAME: GREELEY-ROTHER FEDERAL 16-1 PAD  
SURFACE LOCATION: SE 1/4 SE 1/4 SEC. 1, T5N, R67W, 6TH P.M.  
WELD COUNTY, COLORADO

PREPARED FOR:



# GREELEY-ROTHER FEDERAL 16-1 PAD MULTI-WELL PLAN



- GREELEY-ROTHER FEDERAL 32C-2-L
- 20' —● GREELEY-ROTHER FEDERAL 32N-2B-L
- 20' —● GREELEY-ROTHER FEDERAL 12N-2C-L
- 20' —● GREELEY-ROTHER FEDERAL 12N-2A-L
- 20' —● GREELEY-ROTHER FEDERAL 12C-2-L
- 20' —● GREELEY-ROTHER FEDERAL 33N-2C-L
- 20' —● GREELEY-ROTHER FEDERAL 33N-2B-L
- 20' —● GREELEY-ROTHER FEDERAL 13C-2-L
- 20' —● GREELEY-ROTHER FEDERAL 13N-2B-L
- 20' —● GREELEY-ROTHER FEDERAL 13N-2C-L
- 20' —● GREELEY-ROTHER 34N-2B-L
- 20' —● GREELEY-ROTHER 34C-2-L



## LEGEND

● = PROPOSED WELL

SHEET 2 OF 3

 <b>ASCENT</b> GEOMATICS SOLUTIONS	7535 Hilltop Circle Denver, CO 80221 (303) 928-7128 www.ascentgeomatics.com	
	FIELD DATE: <b>03-09-17</b>	
	DRAWING DATE: <b>08-18-17</b>	
BY: <b>CSG</b>		CHECKED BY: <b>KAD</b>
SITE NAME: <b>GREELEY-ROTHER FEDERAL 16-1 PAD</b>		
SURFACE LOCATION: <b>SE 1/4 SE 1/4 SEC. 1, T5N, R67W, 6TH P.M. WELD COUNTY, COLORADO</b>		
PREPARED FOR:  <b>SRC ENERGY</b>		



# GREELEY-ROTHER FEDERAL 16-1 PAD MULTI-WELL PLAN

## GREELEY-ROTHER FEDERAL 32C-2-L

SURFACE HOLE:  
1163' FSL & 295' FEL  
LAT: 40.424746°  
LON: -104.833512°

TOP OF PRODUCTION ZONE:  
2519' FSL & 150' FEL  
LAT: 40.428482°  
LON: -104.833040°

BOTTOM HOLE:  
2845' FSL & 150' FWL  
LAT: 40.429093°  
LON: -104.867472°

FORMATION:  
CODELL

## GREELEY-ROTHER FEDERAL 32N-2B-L

SURFACE HOLE:  
1143' FSL & 294' FEL  
LAT: 40.424691°  
LON: -104.833511°

TOP OF PRODUCTION ZONE:  
2307' FSL & 150' FEL  
LAT: 40.427901°  
LON: -104.833033°

BOTTOM HOLE:  
2584' FSL & 150' FWL  
LAT: 40.428378°  
LON: -104.867641°

FORMATION:  
NIOBRARA

## GREELEY-ROTHER FEDERAL 12N-2C-L

SURFACE HOLE:  
1123' FSL & 294' FEL  
LAT: 40.424636°  
LON: -104.833510°

TOP OF PRODUCTION ZONE:  
2088' FSL & 150' FEL  
LAT: 40.427301°  
LON: -104.833025°

BOTTOM HOLE:  
2356' FSL & 150' FWL  
LAT: 40.427753°  
LON: -104.867788°

FORMATION:  
NIOBRARA

## GREELEY-ROTHER FEDERAL 12N-2A-L

SURFACE HOLE:  
1103' FSL & 294' FEL  
LAT: 40.424581°  
LON: -104.833509°

TOP OF PRODUCTION ZONE:  
1870' FSL & 150' FEL  
LAT: 40.426701°  
LON: -104.833018°

BOTTOM HOLE:  
2102' FSL & 150' FWL  
LAT: 40.427059°  
LON: -104.867952°

FORMATION:  
NIOBRARA

## GREELEY-ROTHER FEDERAL 12C-2-L

SURFACE HOLE:  
1083' FSL & 294' FEL  
LAT: 40.424527°  
LON: -104.833508°

TOP OF PRODUCTION ZONE:  
1657' FSL & 150' FEL  
LAT: 40.426116°  
LON: -104.833010°

BOTTOM HOLE:  
1864' FSL & 150' FWL  
LAT: 40.426406°  
LON: -104.868106°

FORMATION:  
CODELL

## GREELEY-ROTHER FEDERAL 33N-2C-L

SURFACE HOLE:  
1063' FSL & 294' FEL  
LAT: 40.424472°  
LON: -104.833507°

TOP OF PRODUCTION ZONE:  
1441' FSL & 150' FEL  
LAT: 40.425525°  
LON: -104.833003°

BOTTOM HOLE:  
1620' FSL & 150' FWL  
LAT: 40.425740°  
LON: -104.868264°

FORMATION:  
NIOBRARA

## GREELEY-ROTHER FEDERAL 33N-2B-L

SURFACE HOLE:  
1043' FSL & 294' FEL  
LAT: 40.424417°  
LON: -104.833506°

TOP OF PRODUCTION ZONE:  
1228' FSL & 150' FEL  
LAT: 40.424939°  
LON: -104.832996°

BOTTOM HOLE:  
1374' FSL & 150' FWL  
LAT: 40.425067°  
LON: -104.868423°

FORMATION:  
NIOBRARA

## GREELEY-ROTHER FEDERAL 13C-2-L

SURFACE HOLE:  
1023' FSL & 294' FEL  
LAT: 40.424362°  
LON: -104.833505°

TOP OF PRODUCTION ZONE:  
1013' FSL & 150' FEL  
LAT: 40.424349°  
LON: -104.832988°

BOTTOM HOLE:  
1133' FSL & 150' FWL  
LAT: 40.424407°  
LON: -104.868579°

FORMATION:  
CODELL

## GREELEY-ROTHER FEDERAL 13N-2B-L

SURFACE HOLE:  
1003' FSL & 294' FEL  
LAT: 40.424307°  
LON: -104.833504°

TOP OF PRODUCTION ZONE:  
798' FSL & 150' FEL  
LAT: 40.423758°  
LON: -104.832981°

BOTTOM HOLE:  
892' FSL & 150' FWL  
LAT: 40.423747°  
LON: -104.868734°

FORMATION:  
NIOBRARA

## GREELEY-ROTHER FEDERAL 13N-2C-L

SURFACE HOLE:  
983' FSL & 294' FEL  
LAT: 40.424252°  
LON: -104.833503°

TOP OF PRODUCTION ZONE:  
582' FSL & 150' FEL  
LAT: 40.423167°  
LON: -104.832973°

BOTTOM HOLE:  
648' FSL & 150' FWL  
LAT: 40.423081°  
LON: -104.868892°

FORMATION:  
NIOBRARA

## GREELEY-ROTHER FEDERAL 34N-2B-L

SURFACE HOLE:  
963' FSL & 294' FEL  
LAT: 40.424197°  
LON: -104.833503°

TOP OF PRODUCTION ZONE:  
369' FSL & 150' FEL  
LAT: 40.422582°  
LON: -104.832966°

BOTTOM HOLE:  
412' FSL & 460' FWL  
LAT: 40.422420°  
LON: -104.867917°

FORMATION:  
NIOBRARA

## GREELEY-ROTHER FEDERAL 34C-2-L

SURFACE HOLE:  
943' FSL & 294' FEL  
LAT: 40.424142°  
LON: -104.833502°

TOP OF PRODUCTION ZONE:  
152' FSL & 150' FEL  
LAT: 40.421987°  
LON: -104.832958°

BOTTOM HOLE:  
169' FSL & 460' FWL  
LAT: 40.421756°  
LON: -104.868074°

FORMATION:  
CODELL

SHEET 3 OF 3



ASCENT  
GEOMATICS SOLUTIONS

7535 Hilltop Circle  
Denver, CO 80221  
(303) 928-7128  
www.ascentgeomatics.com

FIELD DATE:  
03-09-17

DRAWING DATE:  
08-18-17

BY:  
CSG

CHECKED BY:  
KAD

SITE NAME:

GREELEY-ROTHER FEDERAL 16-1 PAD

SURFACE LOCATION:

SE 1/4 SE 1/4 SEC. 1, T5N, R67W, 6TH P.M.  
WELD COUNTY, COLORADO

PREPARED FOR:



SRC ENERGY