

# Great Western Operating Company, LLC

**Location** Colorado  
**Field** Wattenburg  
**Installation** Tollway  
**Slot** N13 - Tollway LC 24-369HN  
**Well** Tollway LC 24-369HN  
**Wellbore** Tollway LC 24-369HN (PWB)

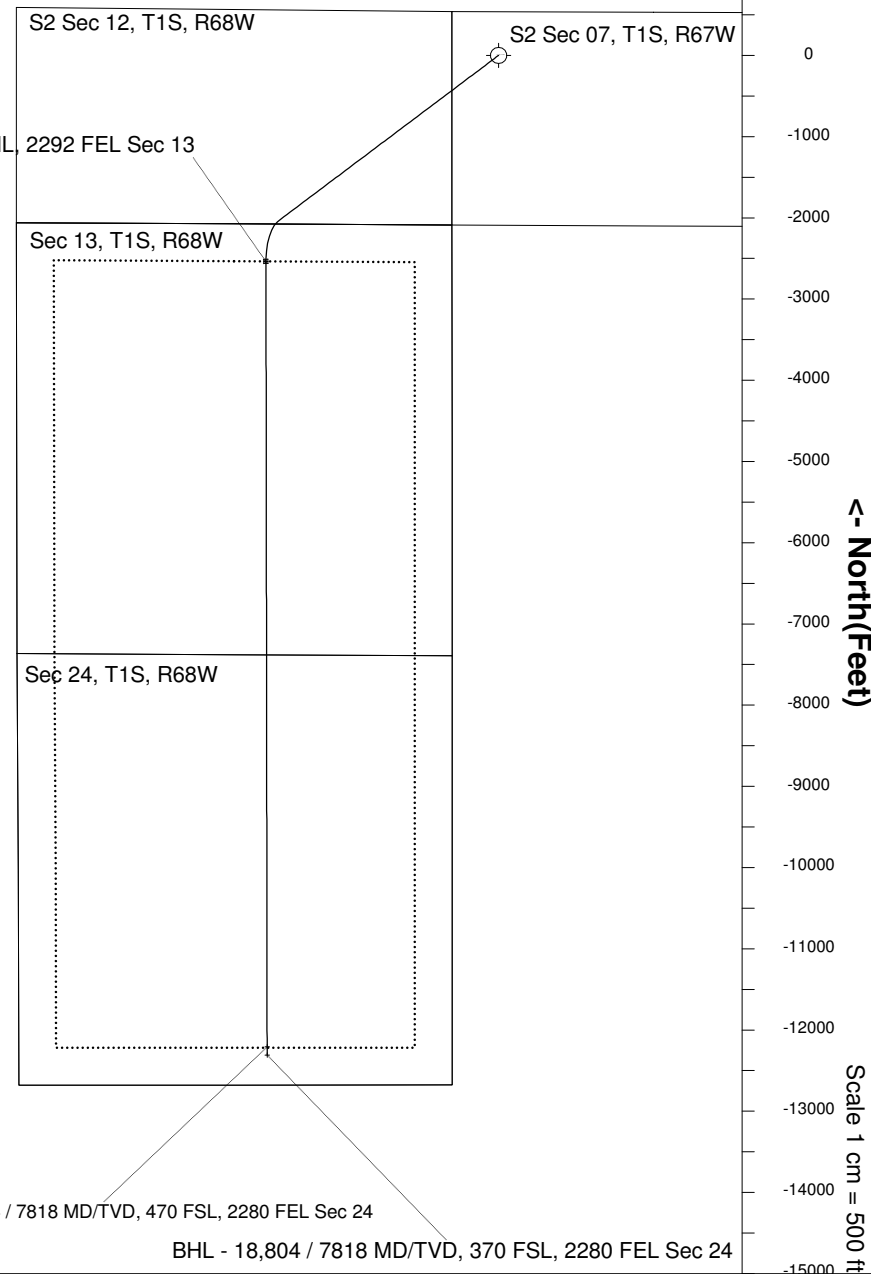
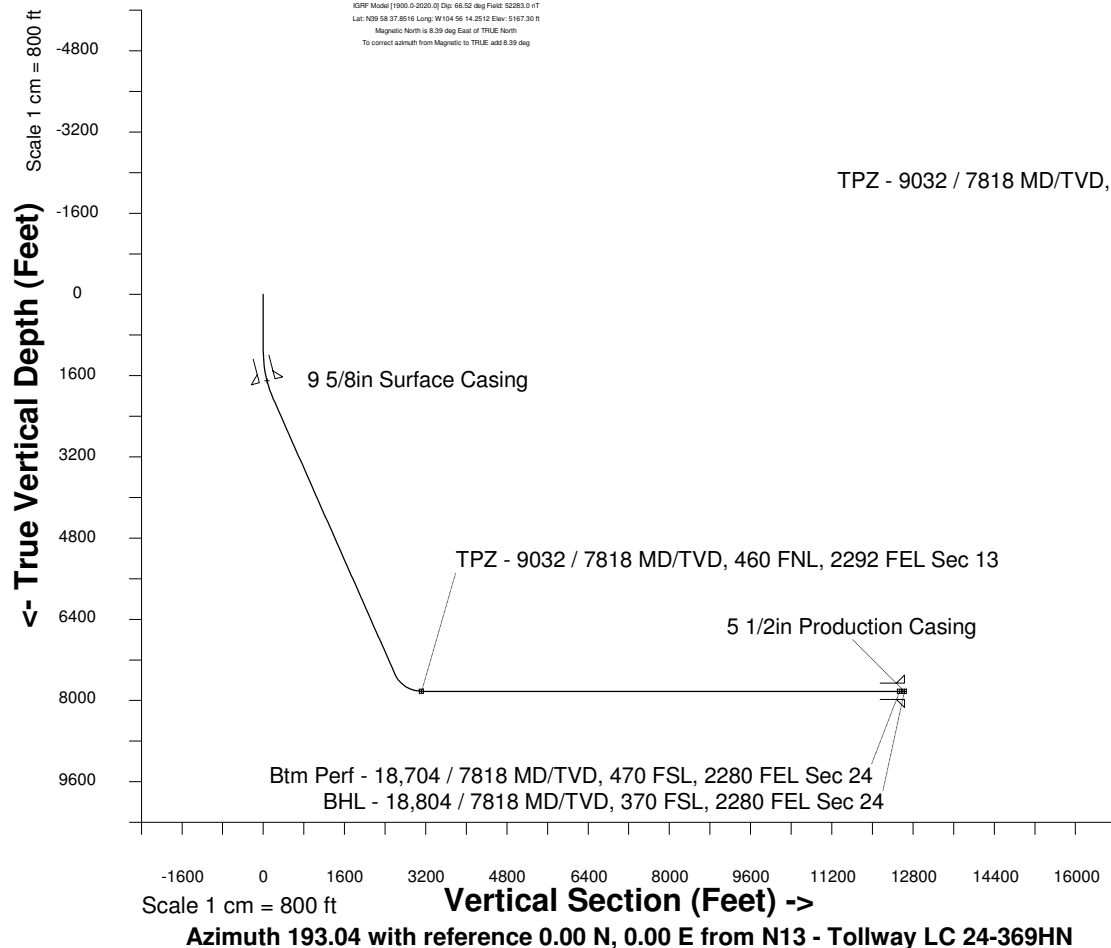
Created by admin  
Date plotted 17-Jan-2018  
Plot reference is Tollway LC 24-369HN (PWB).  
Ref wellpath is Tollway LC 24-369HN (PWP#1).  
Coordinates are in Feet reference N13 - Tollway LC 24-369HN.  
True Vertical Depths are reference Rig Datum.  
Measured Depths are reference Rig Datum.  
Rig Datum: Planned Datum #1  
Rig Datum to Mean Sea Level: 5187.30 ft.  
Plot North is aligned to TRUE North.

Scale 1 cm = 500 ft

East (Feet) ->

-10000 -9000 -8000 -7000 -6000 -5000 -4000 -3000 -2000 -1000 0 1000 2000 3000

20-Apr-2016  
KOPF Model [1900.0-2020.0] Dip: 66.52 deg Field: 52283.0 nT  
Lat: N29 58 37.8516 Long: W104 56 14.2512 Elev: 5167.30 ft  
Magnetic North is 6.39 deg East of TRUE North  
To correct azimuth from Magnetic to TRUE, add 6.39 deg



## WELL PROFILE DATA

Point	MD	Inc	Azi	TVD	North	East	deg/100ft	V. Sect
Tie on	0.00	0.00	0.00	0.00	S 0.00	W 0.00		-0.00
KOP	1099.00	0.00	233.06	1099.00	S 0.00	W 0.00	0.00	-0.00
End of Build	2099.07	30.00	233.06	2053.99	S 153.78	W 204.55	9.84	195.96
End of Hold	8372.67	30.00	233.06	7486.96	S 2038.87	W 2711.99	0.00	2598.14
Target TPZ - ...Sec 13	9032.20	90.00	179.92	7818.00	S 2535.99	W 2864.22	36.09	3116.79
Target Btm Pe...Sec 24	18704.34	90.00	179.92	7818.00	S 12208.12	W 2850.19	0.00	12536.39
End of Turn	18705.15	90.00	180.01	7818.00	S 12208.94	W 2850.19	36.09	12537.19
T.D. & Target BHL... 24	18804.15	90.00	180.01	7818.00	S 12307.93	W 2850.20	0.00	12633.64