

Great Western Operating Company, LLC

Location Colorado
Field Wattenburg
Installation Tollway
Slot N12 - Tollway LC 24-368HN
Well Tollway LC 24-368HN
Wellbore Tollway LC 24-368HN (PWB)

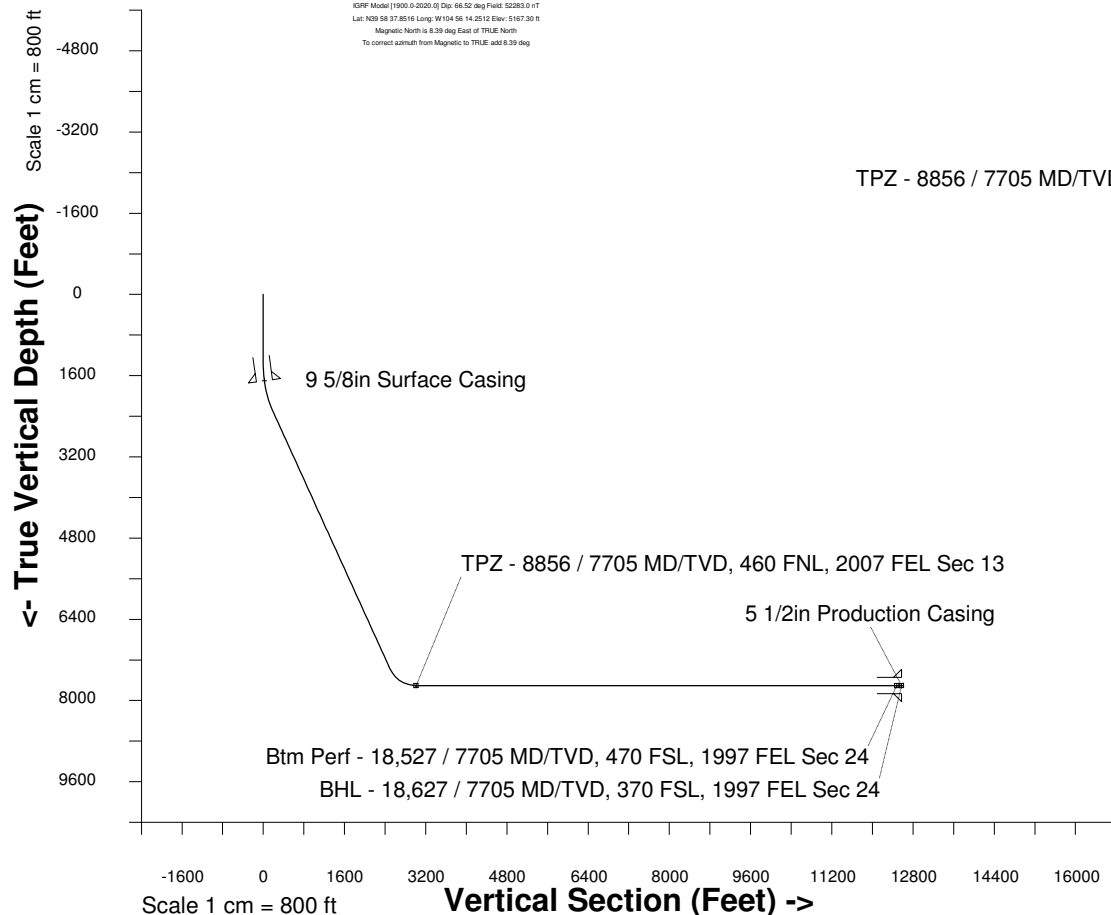
Created by admin
Date plotted 17-Jan-2018
Plot reference is Tollway LC 24-368HN (PWB).
Ref wellpath is Tollway LC 24-368HN (PWP#1).
Coordinates are in Feet reference N12 - Tollway LC 24-368HN.
True Vertical Depths are reference Rig Datum.
Measured Depths are reference Rig Datum.
Rig Datum: Planned Datum #1
Rig Datum to Mean Sea Level: 5187.30 ft.
Plot North is aligned to TRUE North.

Scale 1 cm = 500 ft

East (Feet) ->

-10000 -9000 -8000 -7000 -6000 -5000 -4000 -3000 -2000 -1000 0 1000 2000 3000

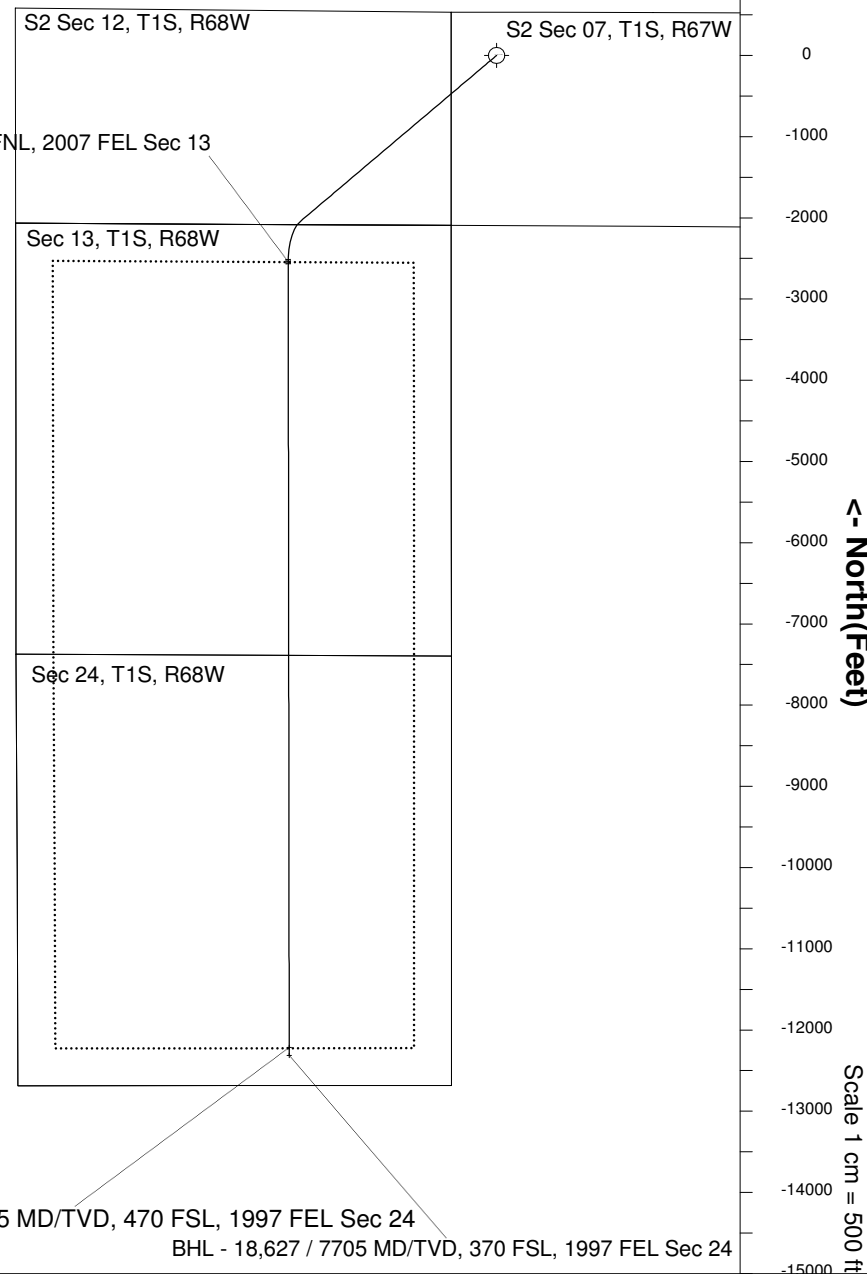
20-Apr-2016
KOPF Model [1900.0-2020.0] Dip: 66.52 deg Field: 52283.0 nT
Lat: N29 58 37.8516 Long: W104 56 14.2512 Elev: 5167.30 ft
Magnetic North is 6.39 deg East of TRUE North
To correct azimuth from Magnetic to TRUE, add 6.39 deg



Scale 1 cm = 800 ft
Vertical Section (Feet) ->
Azimuth 191.72 with reference 0.00 N, 0.00 E from N12 - Tollway LC 24-368HN

WELL PROFILE DATA

Point	MD	Inc	Azi	TVD	North	East	deg/100ft	V. Sect
Tie on	0.00	0.00	0.00	0.00	S 0.00	W 0.00		-0.00
KOP	1371.00	0.00	229.77	1371.00	S 0.00	W 0.00	0.00	-0.00
End of Build	2370.93	30.00	229.77	2325.87	S 165.23	W 195.32	9.84	201.45
End of Hold	8209.24	30.00	229.77	7382.10	S 2050.44	W 2423.87	0.00	2499.88
Target TPZ - ...Sec 13	8856.43	90.00	179.93	7705.00	S 2543.67	W 2565.71	36.09	3011.65
Target Btm Pe...Sec 24	18526.74	90.00	179.93	7705.00	S 12213.98	W 2553.53	0.00	12478.04
End of Turn	18527.46	90.00	180.01	7705.00	S 12214.69	W 2553.53	36.09	12478.73
T.D. & Target BHL... 24	18626.92	90.00	180.01	7705.00	S 12314.16	W 2553.54	0.00	12576.13



Btm Perf - 18,527 / 7705 MD/TVD, 470 FSL, 1997 FEL Sec 24
BHL - 18,627 / 7705 MD/TVD, 370 FSL, 1997 FEL Sec 24