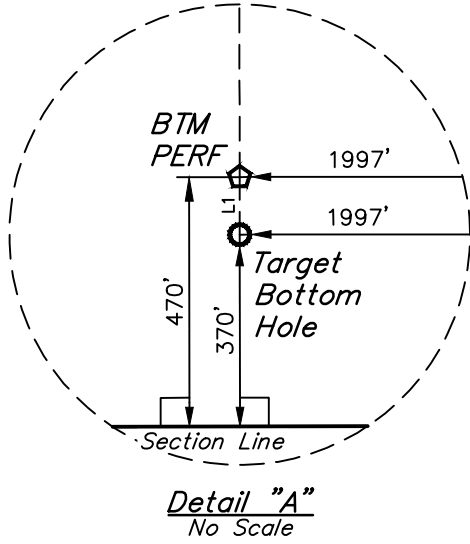


LINE TABLE		
LINE	DIRECTION	LENGTH
L1	S00°03'53"E	100.00'



THIS IS TO CERTIFY THAT THE ABOVE-DESCRIBED WORK WAS DONE IN ACCORDANCE WITH THE NOTES OF ACTUAL SURVEYS MADE BY ME AND UNDER MY SUPERVISION, AND THAT THE SAME ARE TRUE AND CORRECT TO THE BEST OF MY KNOWLEDGE AND BELIEF.

REGISTERED LAND SURVEYOR
REG. NO. 28285
STATE OF COLORADO
JULY 18, 2018

LEGEND:

- 90° SYMBOL
- PROPOSED WELLHEAD.
- ENTRY POINT.
- BTM PERF.
- TARGET BOTTOM HOLE.
- SECTION CORNERS LOCATED. (NAD 83)
- SECTION CORNERS RE-ESTABLISHED. (Not Set on Ground.) (NAD 83)

PDOP = 1.6

NAD 83 (SURFACE LOCATION)	NAD 83 (ENTRY POINT)	NAD 83 (BTM PERF)	NAD 83 (TARGET BOTTOM HOLE)
LATITUDE = 39°58'39.68" (39.977690)	LATITUDE = 39°58'14.55" (39.970707)	LATITUDE = 39°56'38.98" (39.944161)	LATITUDE = 39°56'37.99" (39.943886)
LONGITUDE = 104°56'17.82" (104.938285)	LONGITUDE = 104°56'50.78" (104.947439)	LONGITUDE = 104°56'50.61" (104.947392)	LONGITUDE = 104°56'50.61" (104.947392)
NAD 27 (SURFACE LOCATION)	NAD 27 (ENTRY POINT)	NAD 27 (BTM PERF)	NAD 27 (TARGET BOTTOM HOLE)
LATITUDE = 39°58'39.74" (39.977706)	LATITUDE = 39°58'14.60" (39.970723)	LATITUDE = 39°56'39.03" (39.944176)	LATITUDE = 39°56'38.05" (39.943901)
LONGITUDE = 104°56'15.91" (104.937751)	LONGITUDE = 104°56'48.86" (104.946905)	LONGITUDE = 104°56'48.69" (104.946858)	LONGITUDE = 104°56'48.69" (104.946858)

REV: 2 01-04-18 K.B. (BP ADD, SL, EP, TBI & NAME CHANGE)

UINTEAH
ENGINEERING & LAND SURVEYING

UELS, LLC
Corporate Office * 85 South 200 East
Vernal, UT 84078 * (435) 789-1017

SURVEYED BY	GREG WEIMER	01-04-18	SCALE
DRAWN BY	L.C.S.	03-29-16	1" = 1000'

WELL LOCATION PLAT